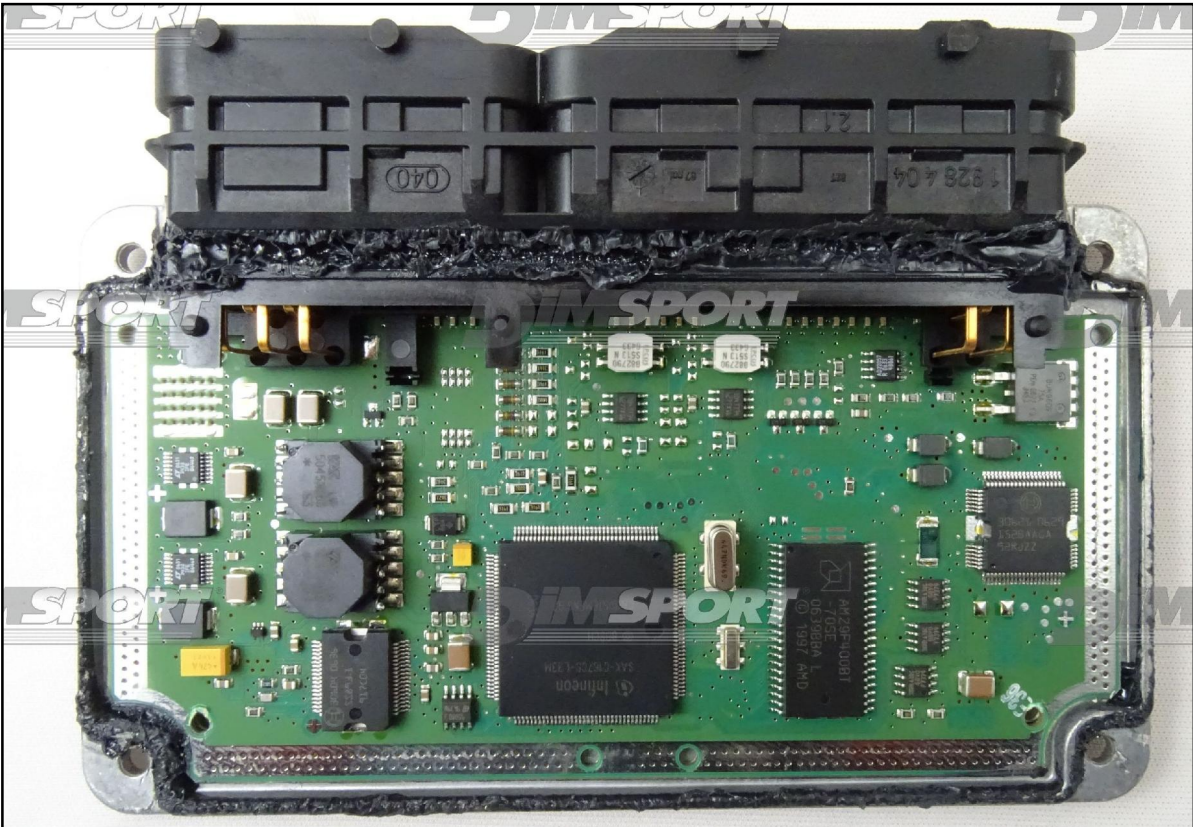


BOSCH DCU15 DAF

plugin 1032

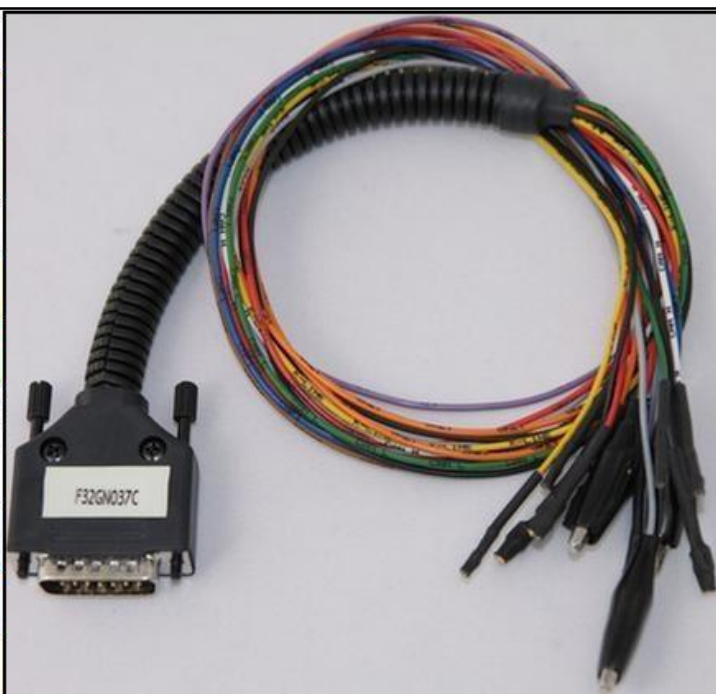


BOSCH DCU15 DAF

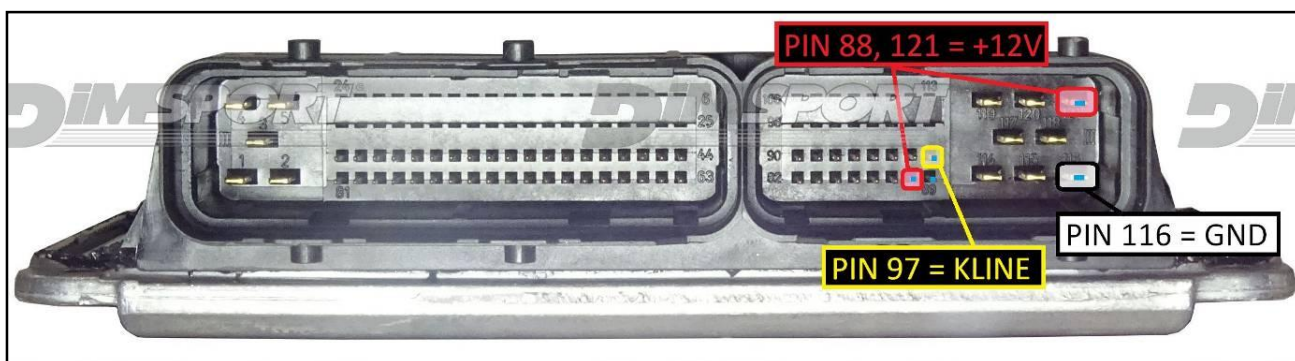
DIRECT CONNECTION

In order to connect to the ECU use the CABLE F32GN037C.
Make sure that the POWER led (red) on Trasdata is ON.

| COLORE FILO WIRE COLOUR | DESCRIZIONE DESCRIPTION |
|-----------------------------|--|
| ROSSO RED | POSITIVO DIRETTO POWER BATTERY |
| ARANCIO ORANGE | POSITIVO SOTTO QUADRO POWER SWITCH ON |
| NERO BLACK | MASSA GND |
| GIALLO YELLOW | KLINE |
| VERDE GREEN | CAN LOW |
| BIANCO WHITE | CAN HIGH |
| GRIGIO GREY | POL4 BOOT |
| BLU BLUE | POL5 CNF1 |
| VIOLA/GRIGIO PURPLE/GREY | TENSIONE PROG. PROG. VOLTAGE |
| MARRONE BROWN | RESET |



ECU CONNECTOR



BOSCH DCU15 DAF

BOOT CONNECTION

Connect the GREY wire of the cable F32GN037C as described here below :

| COLORE FILO WIRE COLOUR | DESCRIZIONE DESCRIPTION |
|----------------------------|----------------------------|
| GRIGIO GREY | POL4 BOOT |

