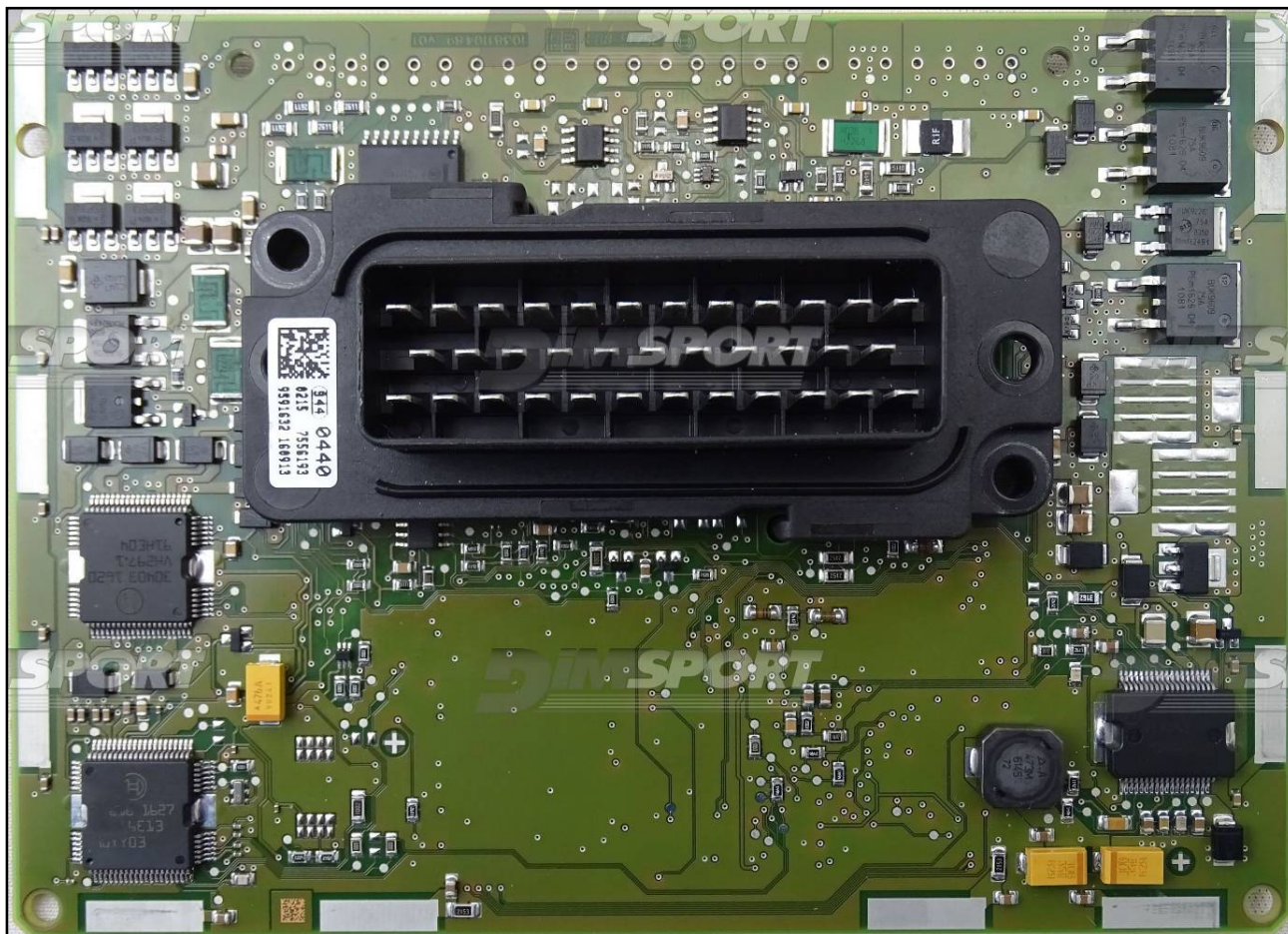
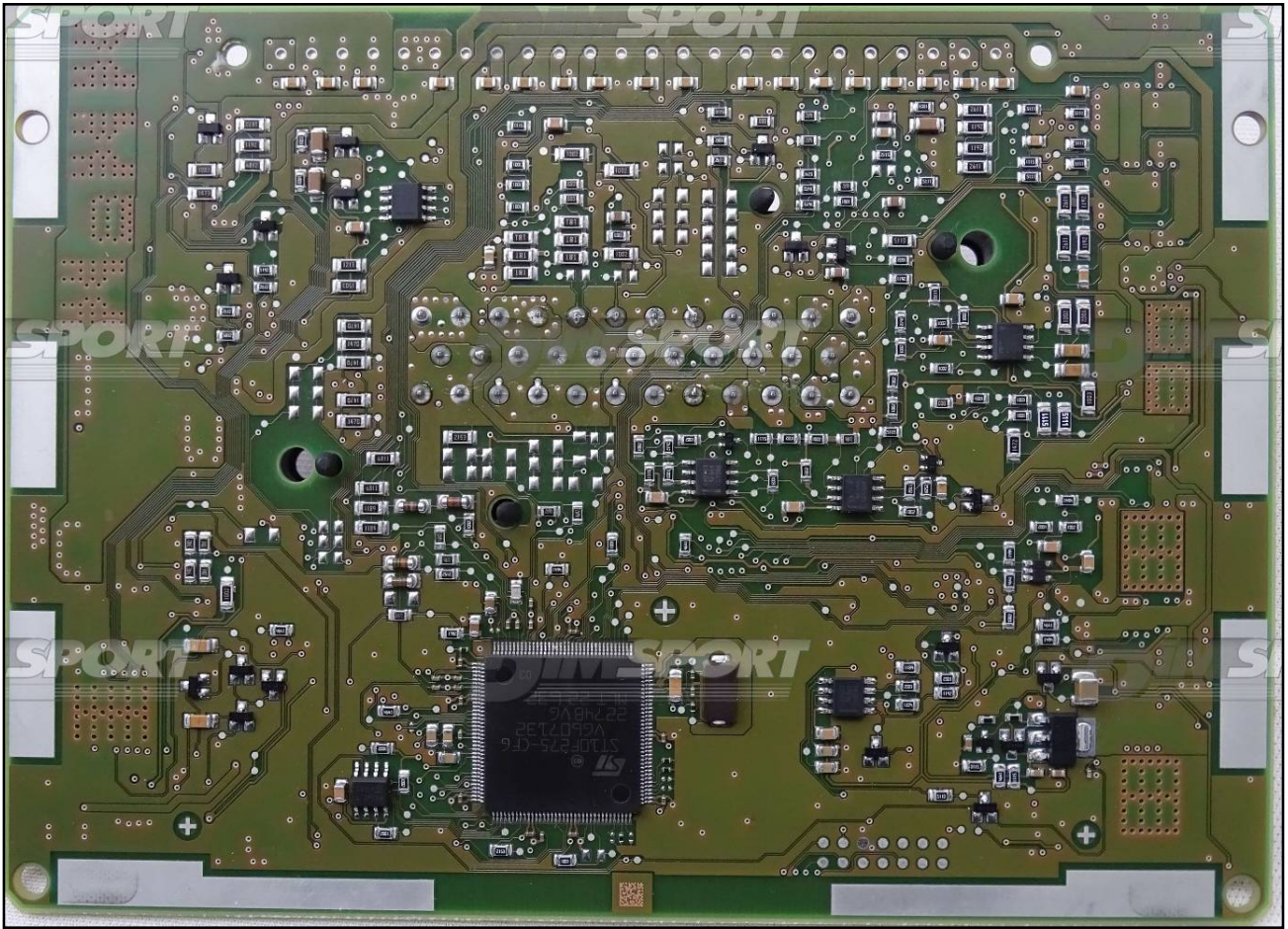


# BOSCH DCU15 IVECO

## plugin 915



# BOSCH DCU15 IVECO

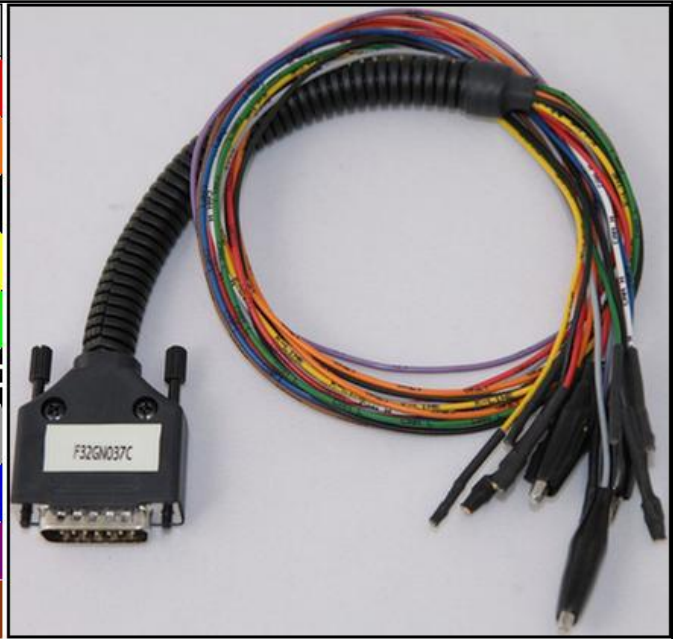


# BOSCH DCU15 IVECO

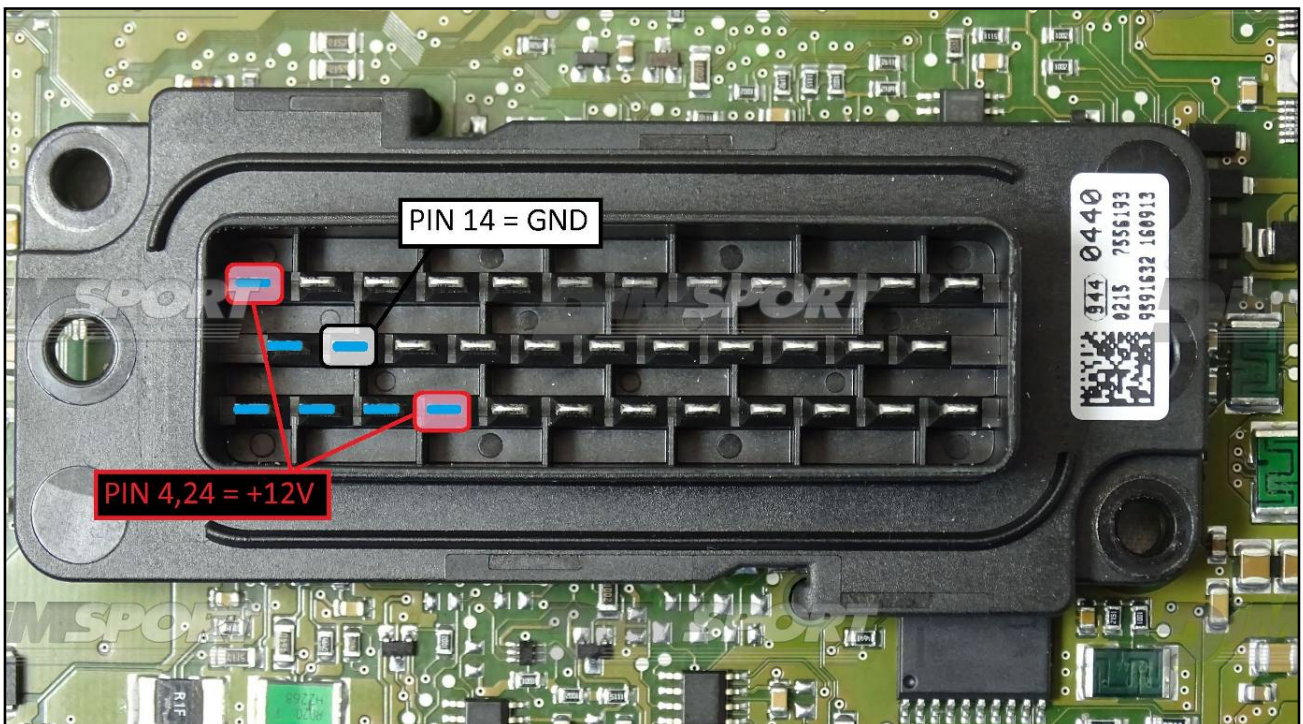
## DIRECT CONNECTION

In order to connect to the ECU use the CABLE F32GN037C.  
Make sure that the POWER led (red) on Trasdata is ON.

COLORE FILO WIRE COULOR	DESCRIZIONE DESCRIPTION
ROSSO RED	POSITIVO DIRETTO POWER BATTERY
ARANCIO ORANGE	POSITIVO SOTTO QUADRO POWER SWITCH ON
NERO BLACK	MASSA GND
GIALLO YELLOW	KLINE
VERDE GREEN	CAN LOW
BIANCO WHYTE	CAN HIGH
GRIGIO GREY	POL4 BOOT
BLU BLUE	POL5 CNF1
VIOLA/GRIGIO PURPLE/GREY	TENSTONE PROG. PROG. VOLTAGE
MARRONE GREY	RESET

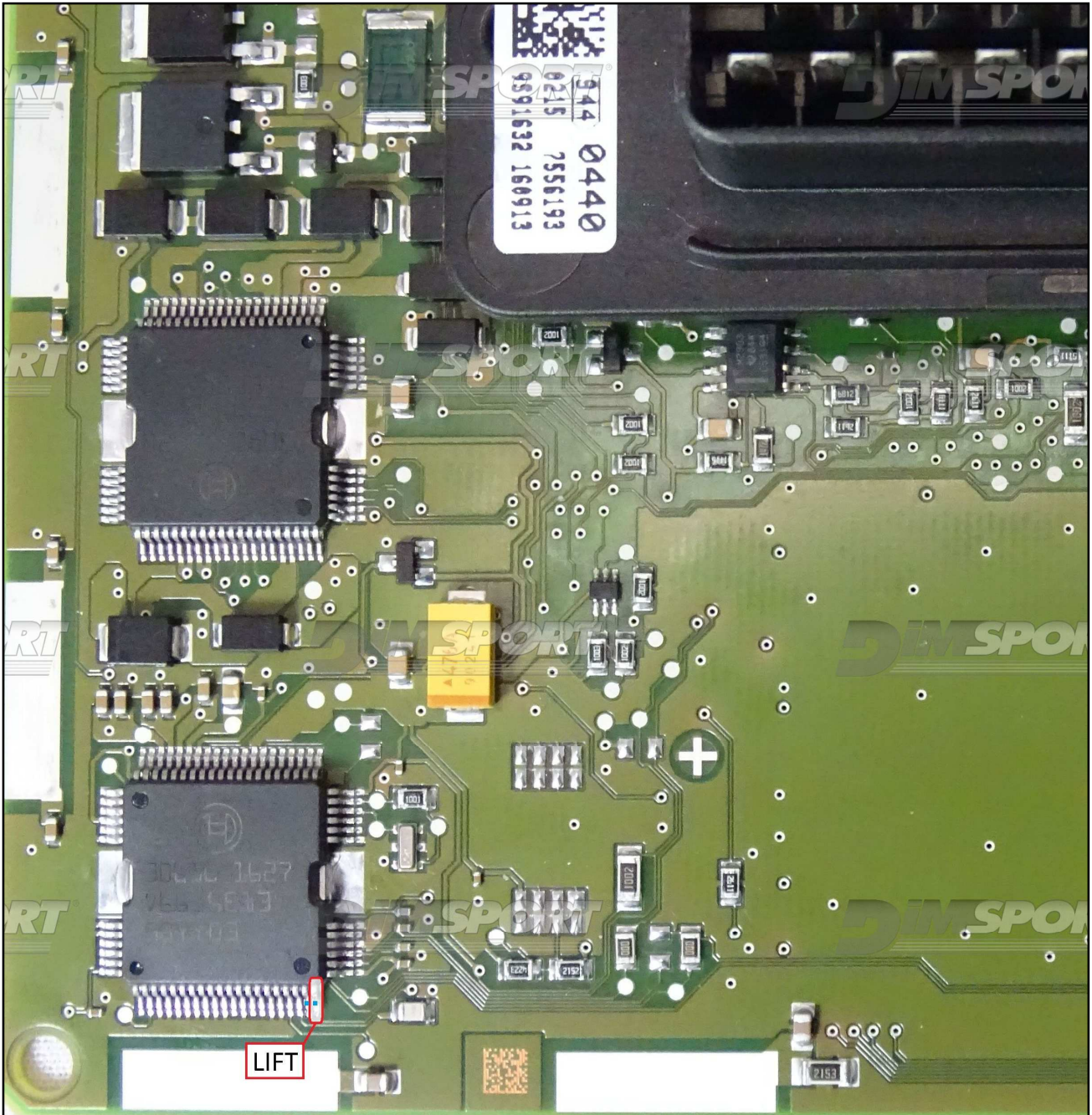


## ECU CONNECTOR



## BOSCH DCU15 IVECO

**Warning:** for a correct communication with the ECU it is necessary to LIFT the pin of the specific chip shown in the picture below. Solder it back before placing the ECU back into the vehicle.

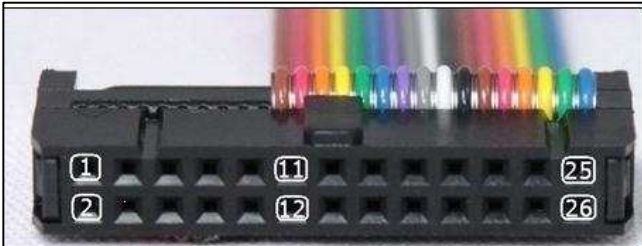


# BOSCH DCU15 IVECO

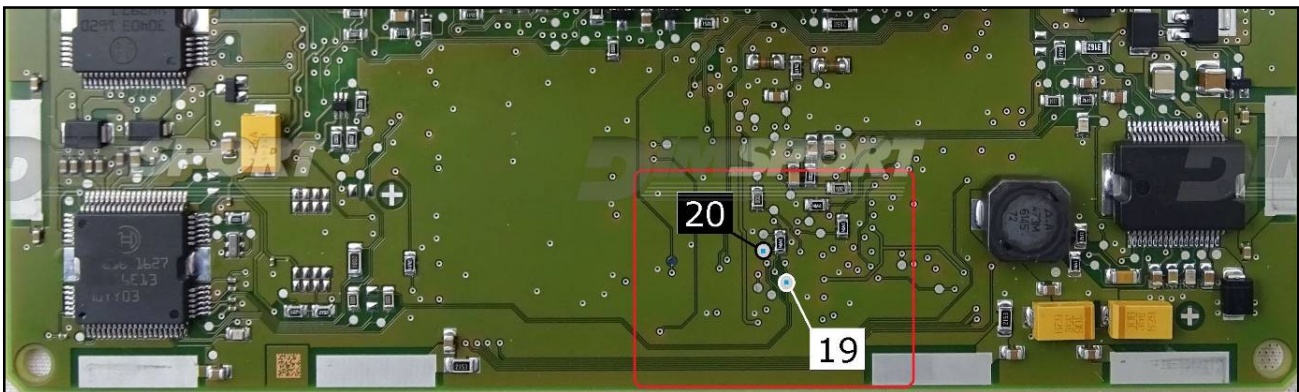

For a correct communication it is necessary to perform both RX&TX and BOOT&CNF1 connection.

## RX & TX CONNECTION

For the RX & TX connections it is necessary to use the F34NTF53 flat cable.



Pin	Colore Colour
11	Non usato Not used
12	Non usato Not used
13	Non usato Not used
14	Non usato Not used
15	Non usato Not used
16	Non usato Not used
17	Non usato Not used
18	Non usato Not used
19	Bianco White
20	Nero Black
21	Non usato Not used
22	Non usato Not used
23	Non usato Not used
24	Non usato Not used
25	Non usato Not used
26	Non usato Not used



## BOSCH DCU15 IVECO

### BOOT&CNF1 CONNECTION

Connect the GREY and BLUE wires of the cable F32GN037C as described here below :

COLORE FILO WIRE COULOR	DESCRIZIONE DESCRIPTION
GRIGIO GREY	POL4 BOOT
BLU BLUE	POL5 CNF1

