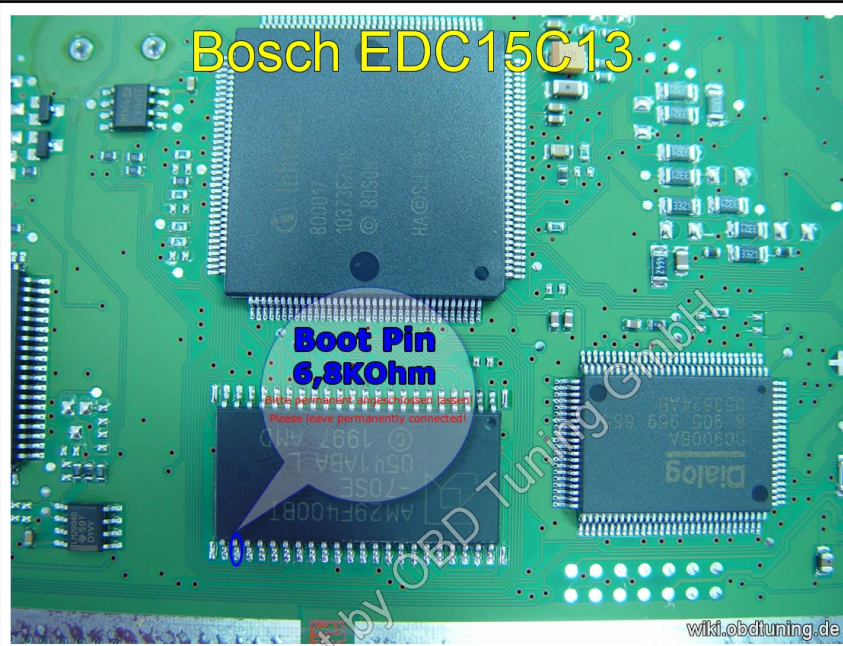
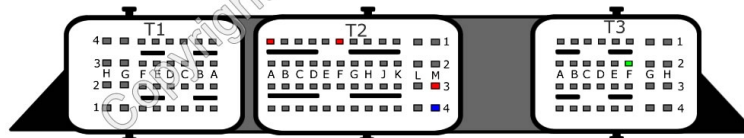


# Bosch EDC15C13



wiki.obdtuning.de



<b>Vcc/Power/+12Volt (KL30)</b>	<b>T2 - Pin F1/M3</b>
<b>Vcc/Power/+12Volt (KL15)</b>	<b>T2 - Pin A1</b>
<b>GND/Ground/Masse (KL31)</b>	<b>T2 - Pin M4</b>
<b>K-Line</b>	<b>T3 - Pin F2</b>

#### Erklärung zu den KFZ Klemmenbezeichnungen:

(15) = +12Volt switch power/Geschaltetes Plus  
 (30) = +12Volt permanent Power/dauer Plus  
 (31) = GND Ground/Masse  
 CAN High = Controller Area Network High  
 CAN Low = Controller Area Network Low