

BOSCH EDC16+ 002

PLUGIN EDC16+

In these ECUs in order to handle the lay by pins you must completely remove the two ECU metal covers (back and front side) and handle directly the ECU board.

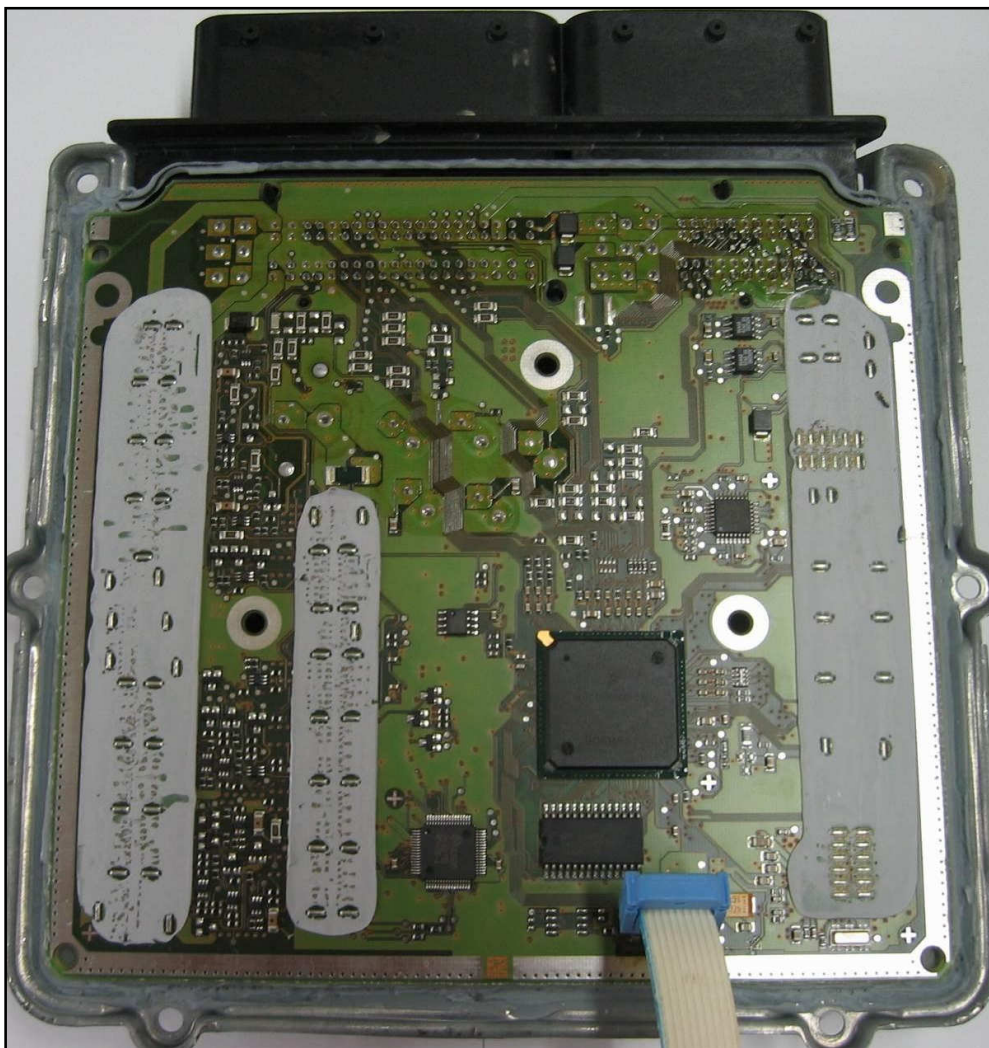
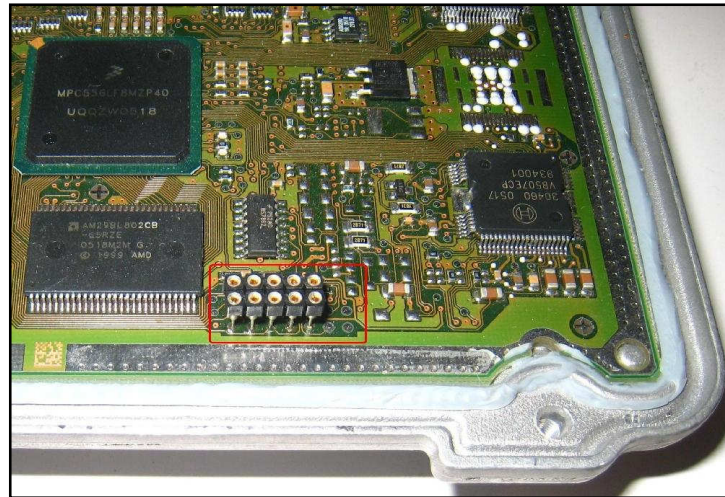
To access the BDM pins you must remove the screws behind the case. Be careful as the cover is glued to the ECU board. Attention: the ECU is glued to the cover. After removing the second cover the lay by pins are placed at the bottom of the board. Removing board operation **MUST BE DONE SLOWLY** with caution as an excessive strenght could damage the board.



BOSCH EDC16+ 002

DIRECT CONNECTION

Among these 14's we will use the first 10's from the left to solder the strips or guiding pin strips.
The coloured stripe of the flat cable identifies the pin number one and MUST face left (you should watch the ECU with the connector placed upwards (EPROM side).



BOSCH EDC16+ 002

DIMA CONNECTION

