

BOSCH EDC17C08 IROM TC1766 KIA

plugin 164 - EDC17C08 Hyundai - Kia
plugin 377 - EDC17C08 Piaggio

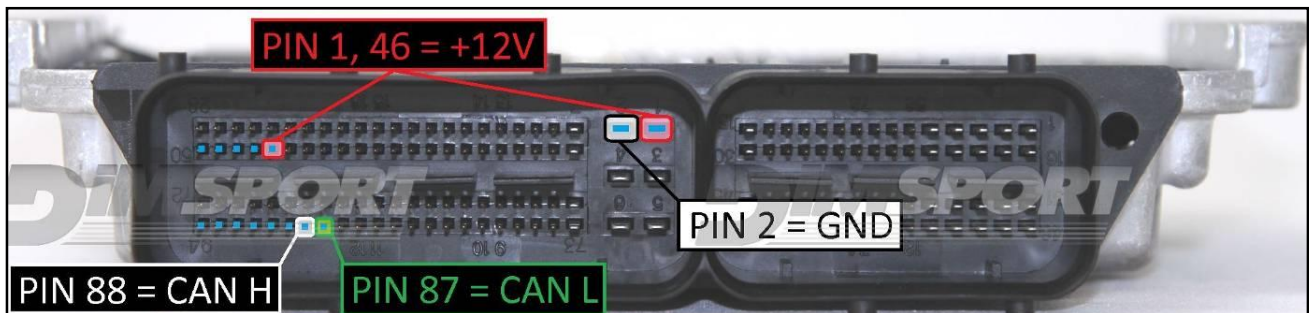
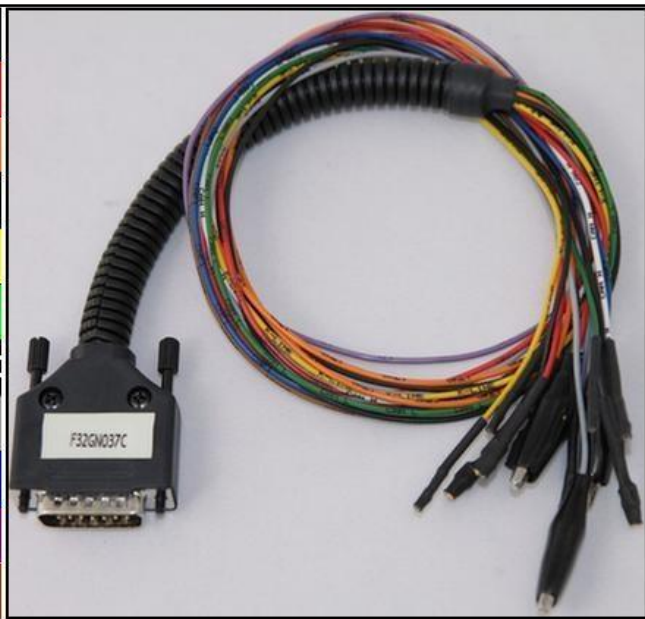


BOSCH EDC17C08 IROM TC1766 KIA

ECU CONNECTOR

For the connection with LOOSE WIRES use the cable F32GN037C connected to the ECU.
Make sure that the POWER led (red) on Trasdata is ON.
Do not use this connection with the metal positioning frame kit.

COLORE FILO WIRE COLOUR	DESCRIZIONE DESCRIPTION
ROSSO RED	POSITIVO DIRETTO POWER BATTERY
ARANCIO ORANGE	POSITIVO SOTTO QUADRO POWER SWITCH ON
NERO BLACK	MASSA GND
GIALLO YELLOW	KLINE
VERDE GREEN	CAN LOW
BIANCO WHITE	CAN HIGH
GRIGIO GREY	POL4 BOOT
BLU BLUE	POL5 CNF1
VIOLA/GRIGIO PURPLE/GREY	TENSIONE PROG. PROG. VOLTAGE
MARRONE BROWN	RESET

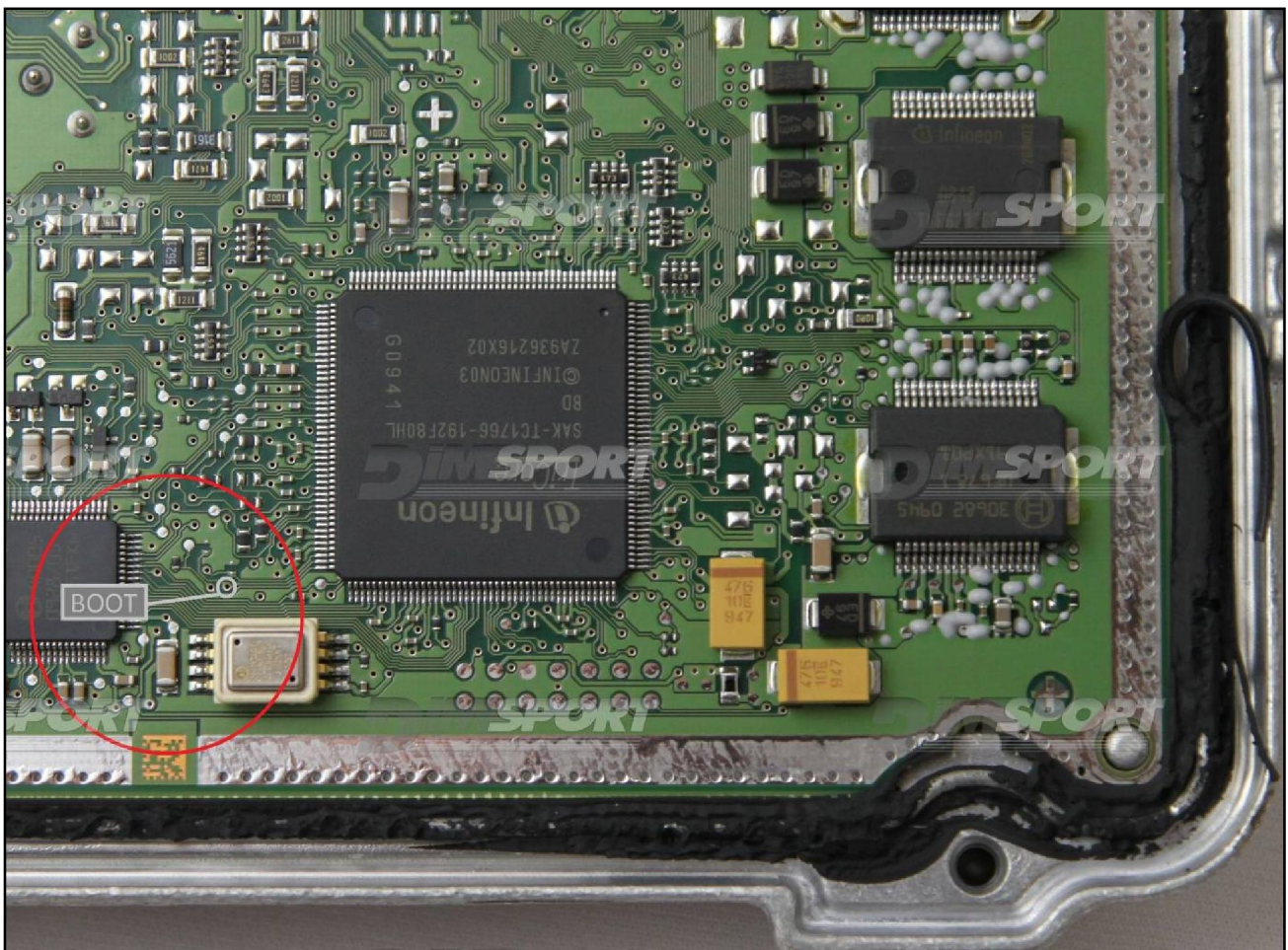


BOSCH EDC17C08 IROM TC1766 KIA

BOOT DIRECT CONNECTION

Connect the GREY wire of the cable F32GN037C as described here below :

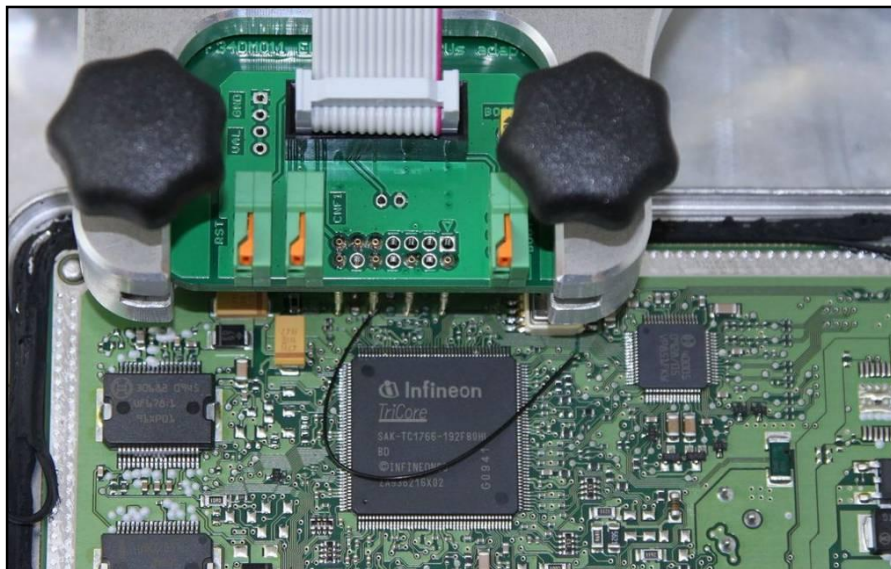
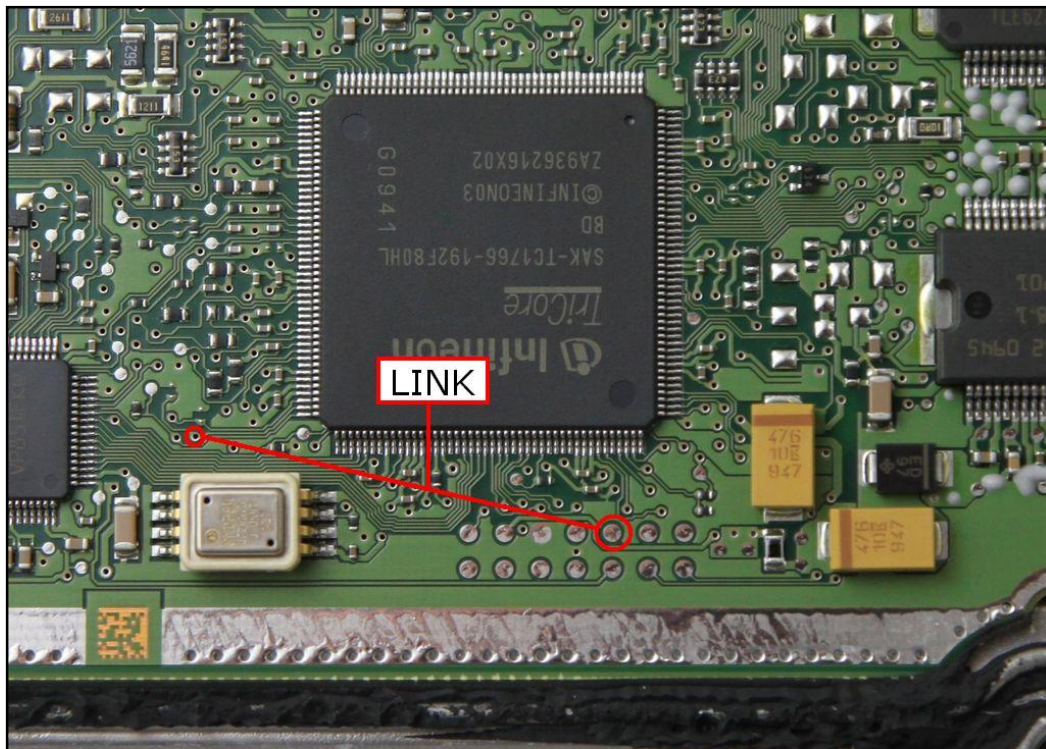
COLORE FILO WIRE COLOUR	DESCRIZIONE DESCRIPTION
GRIGIO	POL4
GREY	BOOT



BOSCH EDC17C08 IROM TC1766 KIA

METAL POSITIONING FRAME CONNECTION

For the metal positioning frame connection is required the F34DM011 adapter. Connect the boot pin to the pad n.10 of the soldering lay-by pins then verify that the switch BOOT present on the F34DM011 is set in position ON.



A different solution is to connect the BOOT wire directly to the orange BOOT clamp on the DIMA adapter F34DM011. Check that the yellow BOOT jumper is set in ON position. Connect the DIMA flat cable to the Trasdata.