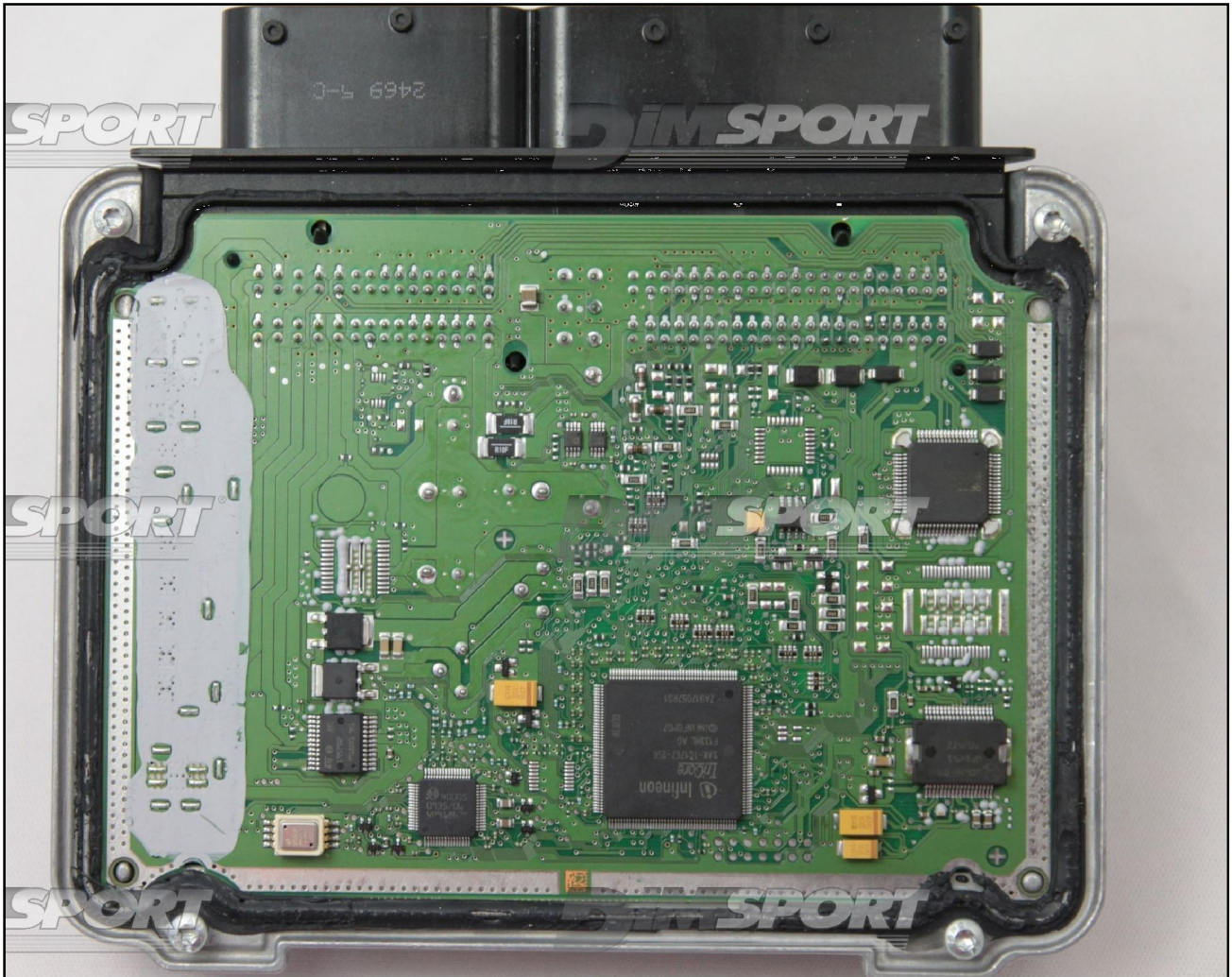


BOSCH EDC17C46 IROM TC1767 VAG

plugin 199 – 269



BOSCH EDC17C46 IROM TC1767 VAG

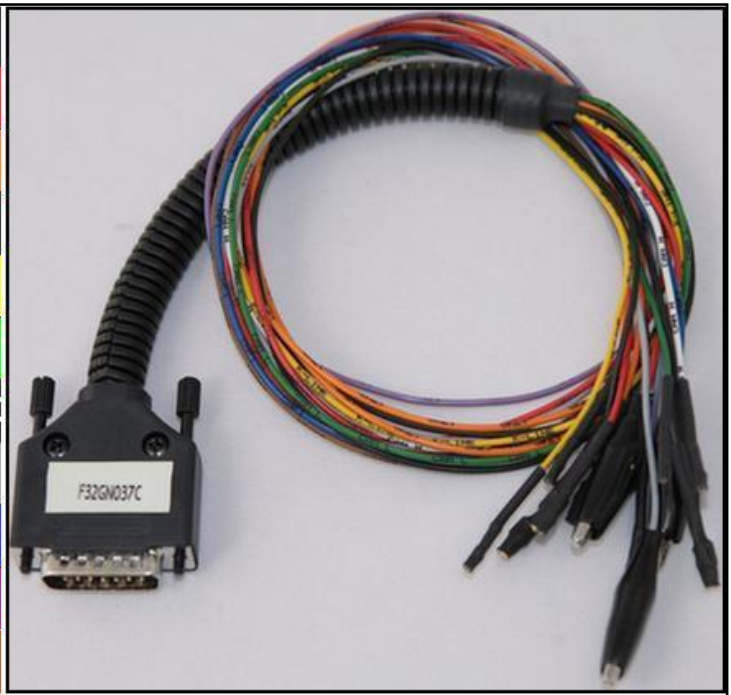
DIRECT CONNECTION

In order to connect to the ECU use the CABLE F32GN037C.

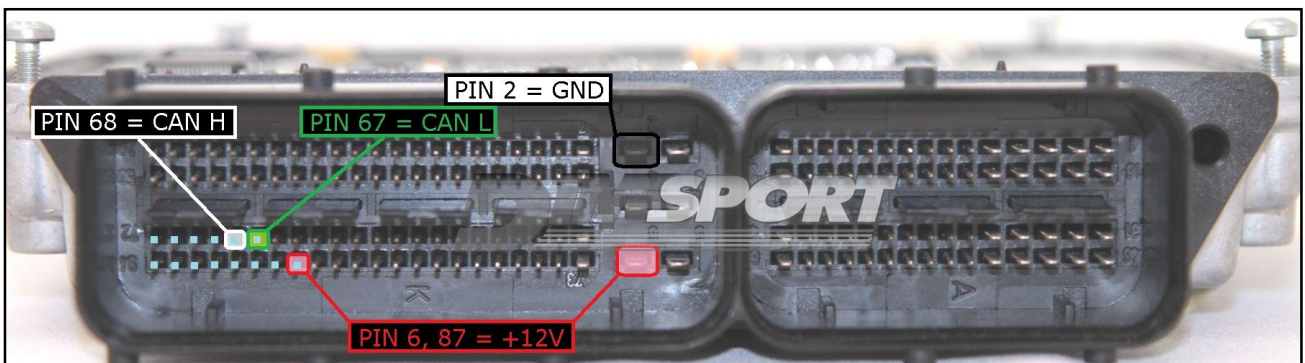
Make sure that the POWER led (red) on Trasdata is ON.

Do not use this connection with the KIT DIMA.

COLORE FILO WIRE COLOUR	DESCRIZIONE DESCRIPTION
ROSSO RED	POSITIVO DIRETTO POWER BATTERY
ARANCIO ORANGE	POSITIVO SOTTO QUADRO POWER SWITCH ON
NERO BLACK	MASSA GND
GIALLO YELLOW	KLINE
VERDE GREEN	CAN LOW
BIANCO WHITE	CAN HIGH
GRIGIO GREY	POL4 BOOT
BLU BLUE	POL5 CNF1
VIOLA/GRIGIO PURPLE/GREY	TENSIONE PROG. PROG. VOLTAGE
MARRONE GREY	RESET



ECU CONNECTOR

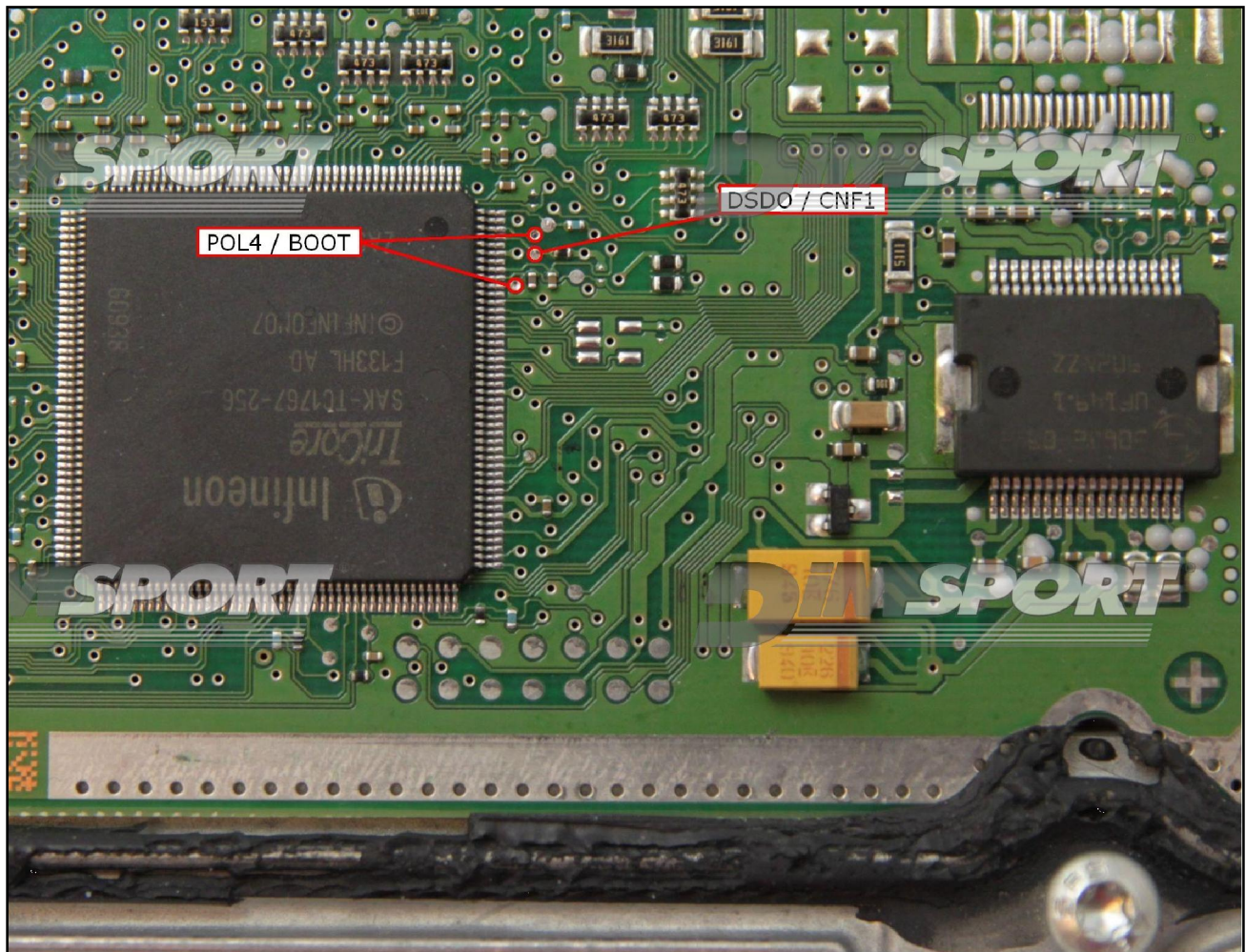


BOSCH EDC17C46 IROM TC1767 VAG

BOOT/CNF1 CONNECTION

Connect the GREY and BLUE wires of the cable F32GN037C as described here below :

COLORE FILO WIRE COLOUR	DESCRIZIONE DESCRIPTION
GRIGIO GREY	POL4 BOOT
BLU BLUE	POL5 CNF1



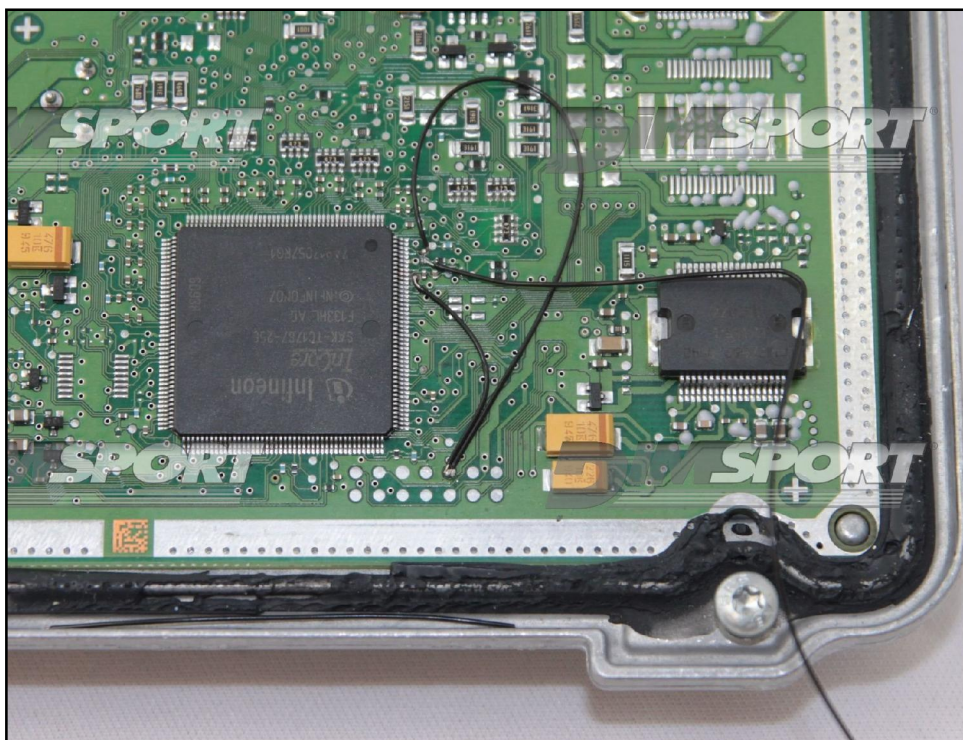
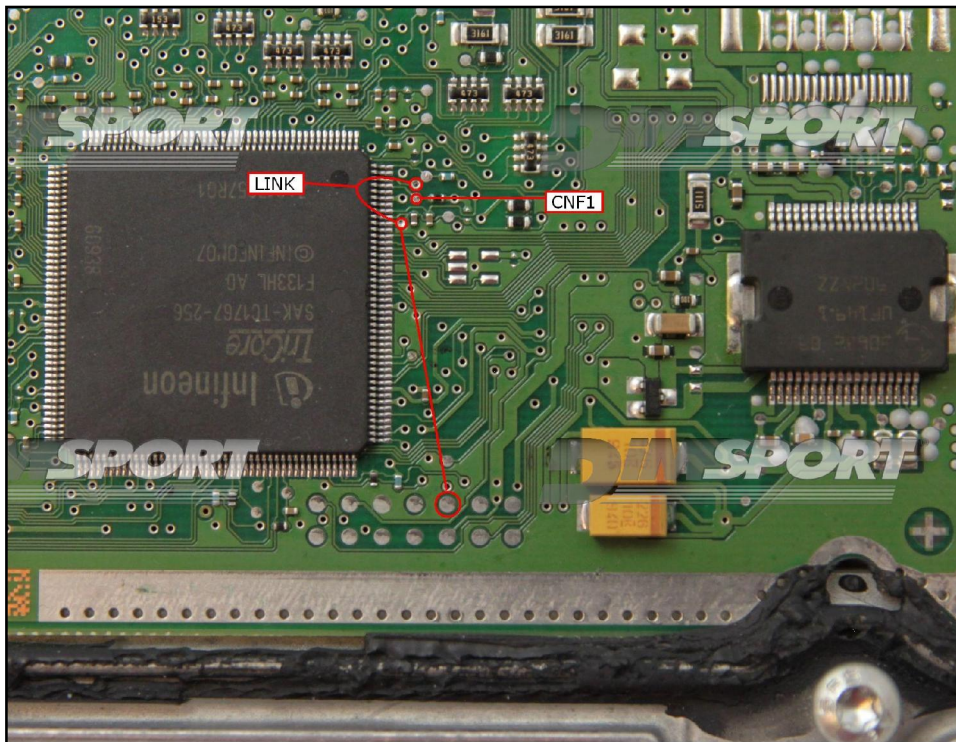
BOSCH EDC17C46 IROM TC1767 VAG

DIMA CONNECTION

For the DIMA connection is required the F34DM011 DIMA adapter.

Connect the BOT pins to the pad n.10 of the soldering lay-by pins then verify that the switch BOOT present on the F34DM011 is set in position ON.

The third pad CNF1 must be connected with a wire to the CNF1 clamp on the DIMA adapter, then connect the DIMA flat cable to the Trasdata.



BOSCH EDC17C46 IROM TC1767 VAG



A different solution is to connect the BOOT wires directly to the orange BOOT clamp on the DIMA adapter F34DM011. Check that the yellow BOOT jumper is set in ON position. Connect the DIMA flat cable to the Trasdata.