

BOSCH EDC17C49 CHRYSLER/FAL/JEEP
BOSCH EDC17C79 CHRYSLER/FAL/JEEP

plugin 503 BOSCH EDC17C49 INFINEON TRICORE MEDC17
TPROT11

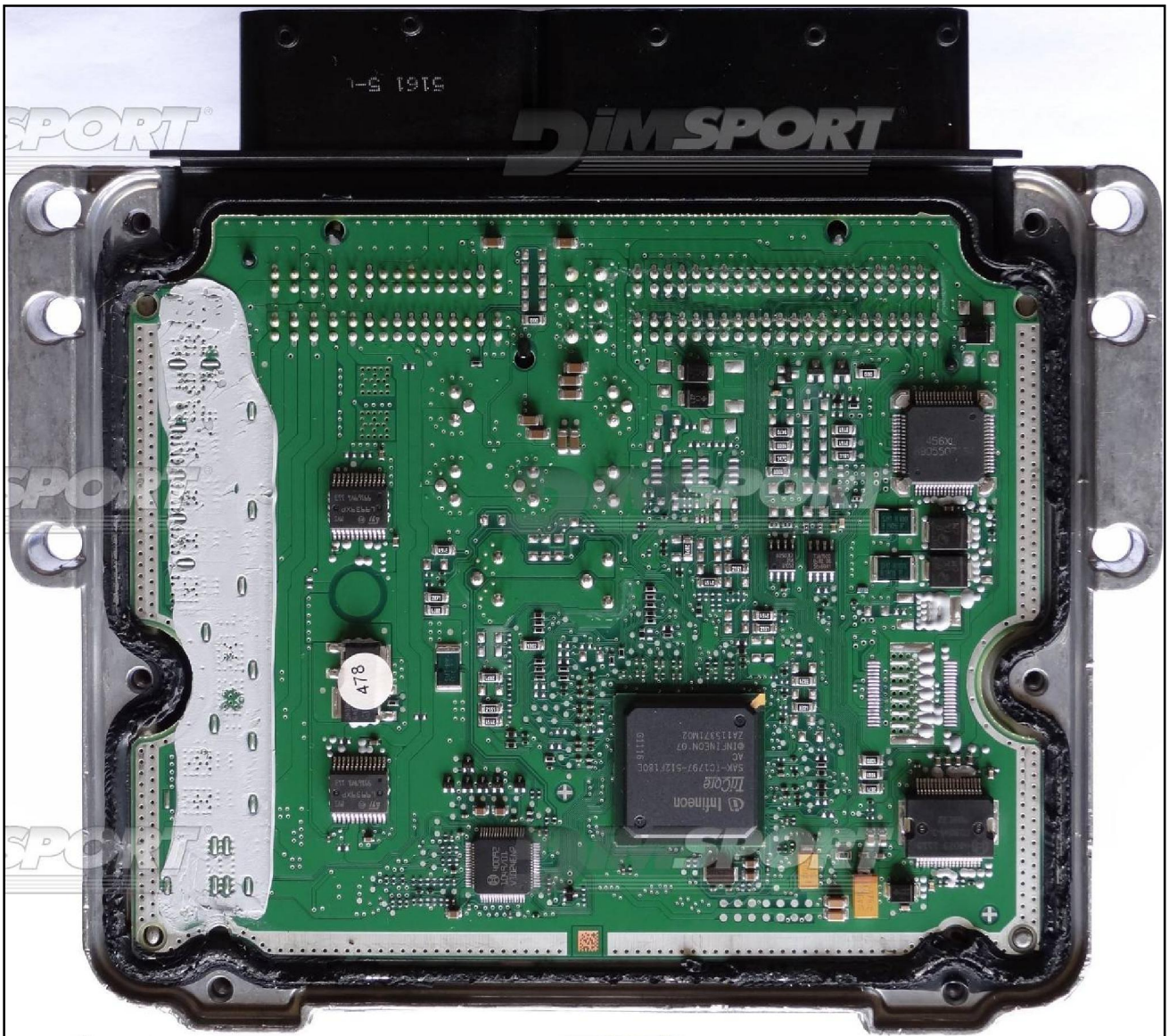
plugin 596 BOSCH EDC17C79 INFINEON TRICORE MEDC17 TPROT11

plugin 598 BOSCH EDC17C79 INFINEON TRICORE MEDC17 TPROT11

plugin 923 BOSCH EDC17C49 INFINEON TRICORE MEDC17 TPROT2/4/7

EDC17C49 / EDC17C79

Warning : JEEP GRAN CHEROKEE vehicles equipped with 6 gears AUTOMATIC transmission and EDC17C49 can be read/written with Trasdata **ONLY**, the FLASH 0315 does **NOT** work. In addition to the F34DM011 DIMA adapter connection **it is necessary** to connect the Trasdata directly to the ECU connector. Please check the specific connections at pg. 5 of this manual.



BOSCH EDC17C49 CHRYSLER/FAL/JEEP
BOSCH EDC17C79 CHRYSLER/FAL/JEEP

EDC17C49 FIAT, EDC17C79 FIAT & JEEP

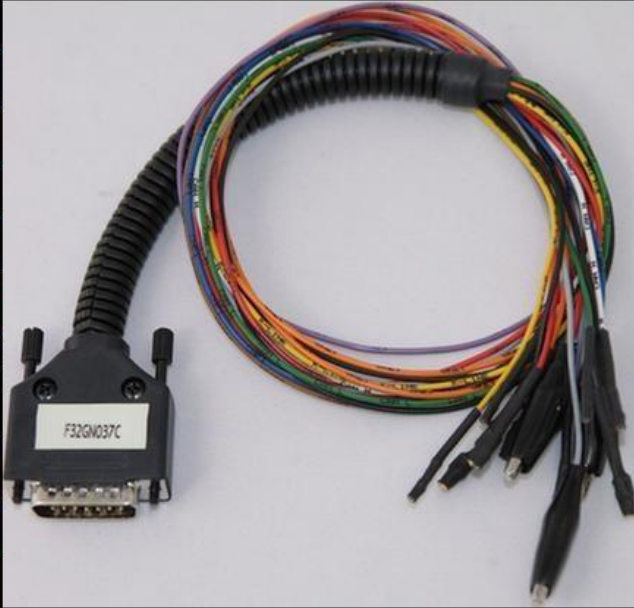
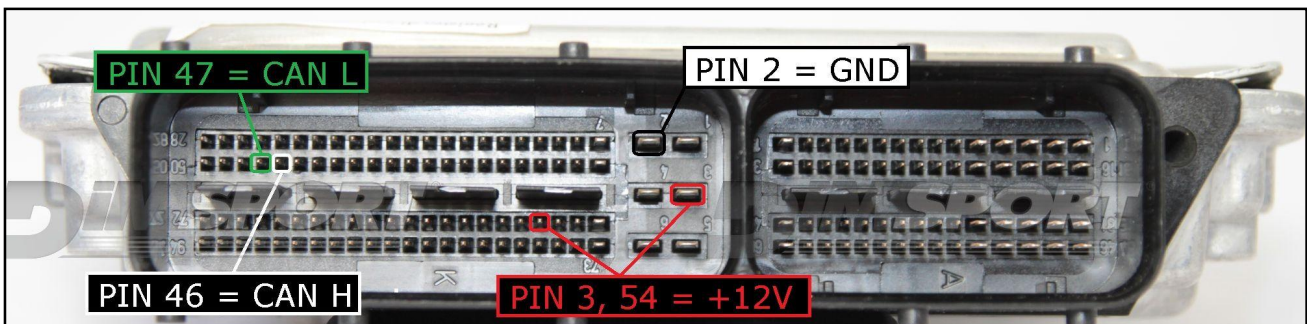
ECU CONNECTOR EDC17C49 FIAT , EDC17C79 FIAT & JEEP

In order to connect to the ECU use the CABLE F32GN037C.

Make sure that the POWER led (red) on Trasdata is ON.

Do not use this connection for the Metal positioning frame DIMA.

COLORE FILO WIRE COLOUR	DESCRIZIONE DESCRIPTION
■ ROSSO RED	POSITIVO DIRETTO POWER BATTERY
■ ARANCIO ORANGE	POSITIVO SOTTO QUADRO POWER SWITCH ON
■ NERO BLACK	MASSA GND
■ GIALLO YELLOW	KLINE
■ VERDE GREEN	CAN LOW
■ BIANCO WHITE	CAN HIGH
■ GRIGIO GREY	POL4 BOOT
■ BLU BLUE	POL5 CNF1
■ VIOLA/GRIGIO PURPLE/GREY	TENSIONE PROG. PROG. VOLTAGE
■ MARRONE BROWN	RESET

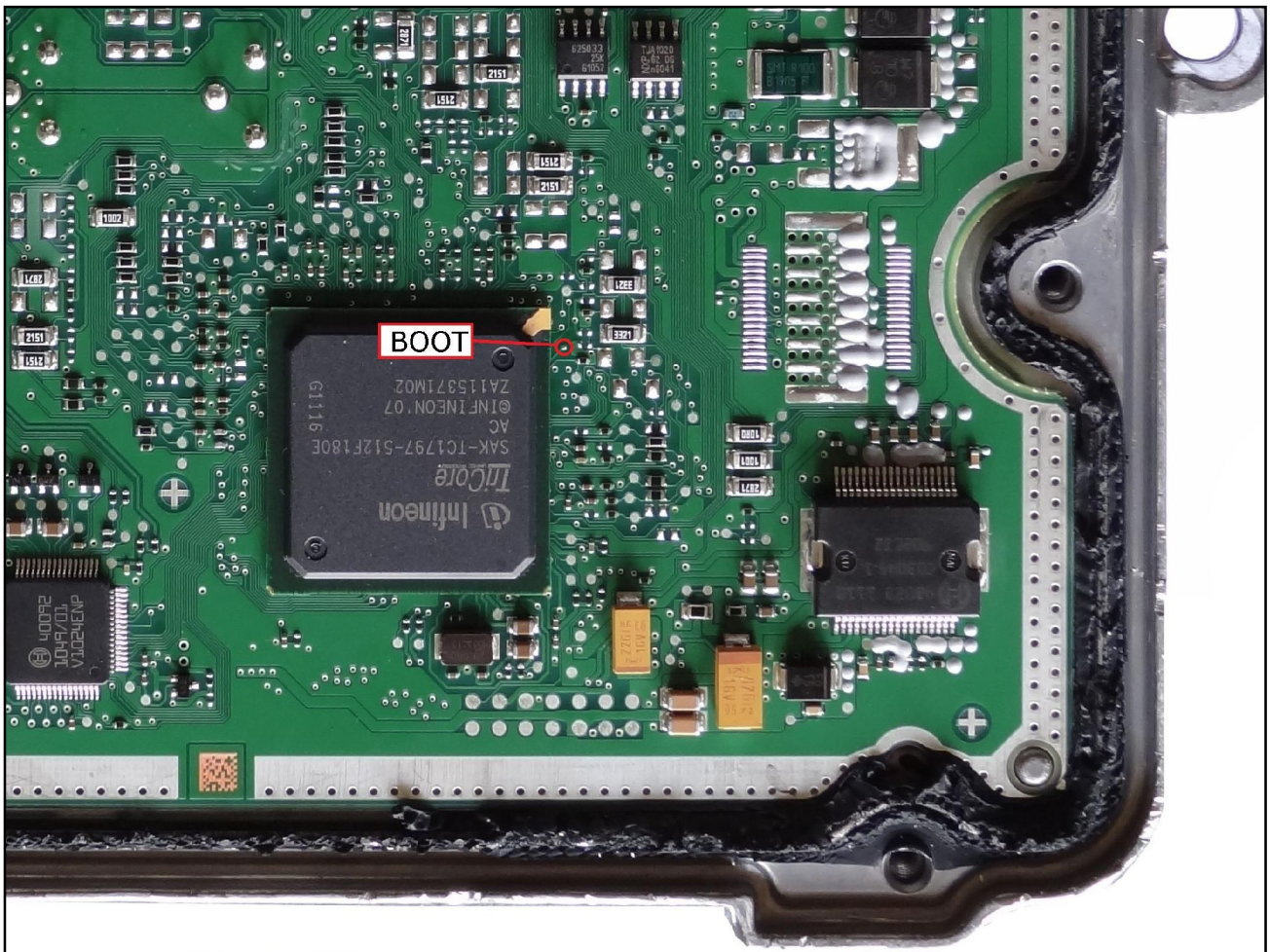



BOSCH EDC17C49 CHRYSLER/FAL/JEEP
BOSCH EDC17C79 CHRYSLER/FAL/JEEP

DIRECT CONNECTION EDC17C49 FIAT , EDC17C79 FIAT & JEEP

Connect the GREY wire of the cable F32GN037C as described here below :

COLORE FILO WIRE COLOUR	DESCRIZIONE DESCRIPTION
GRIGIO GREY	POL4 BOOT

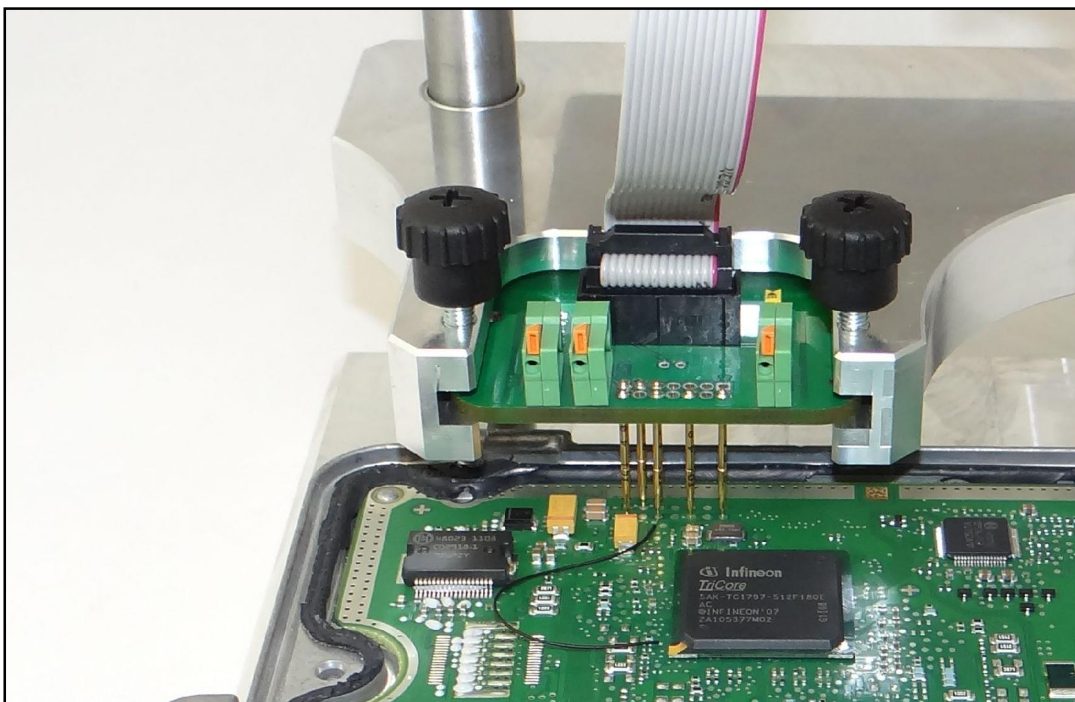
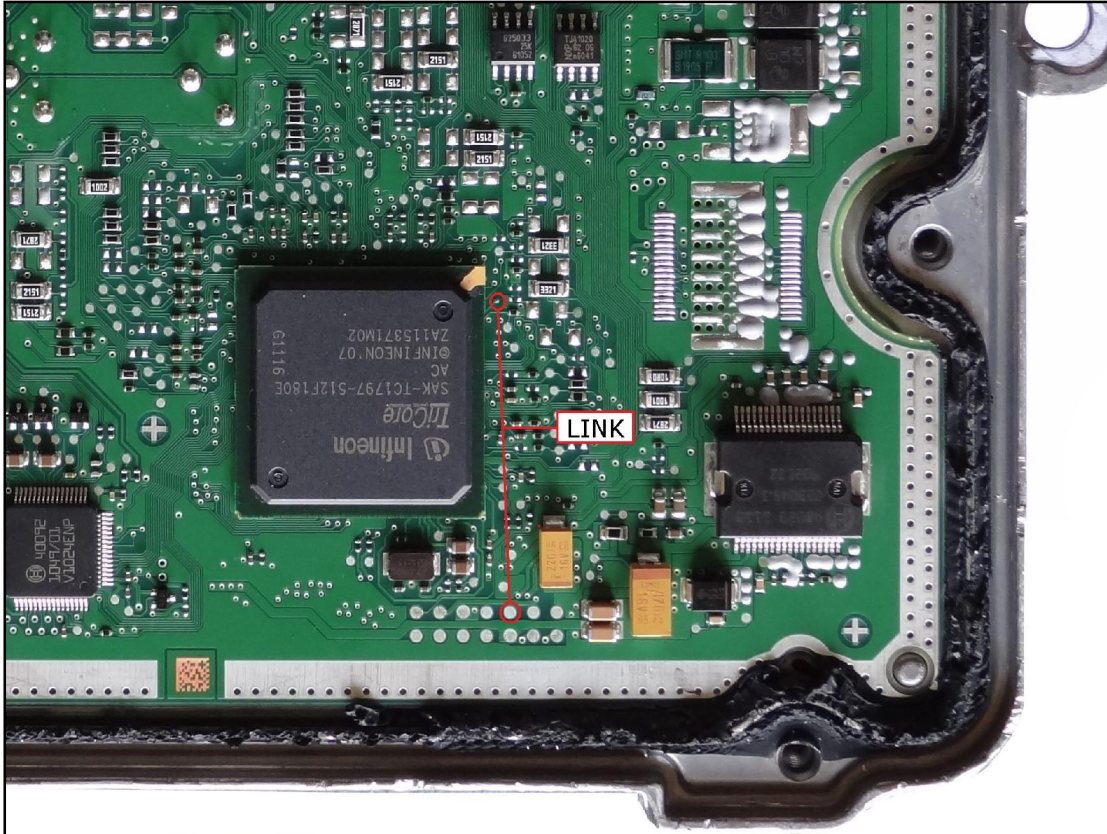


WARNING: if the connections explained here above do NOT work and even after double checking the connections still pops up the error "CAN communication error" we suggest to use the DIMA F34DM011 adapter + **only** CAN H & CAN L wires connected on the ECU connector as shown at pg.5 and as the complete image at pg. 7.

BOSCH EDC17C49 CHRYSLER/FAL/JEEP
BOSCH EDC17C79 CHRYSLER/FAL/JEEP

METAL POSITIONING FRAME CONNECTION
EDC17C49 FIAT , EDC17C79 FIAT & JEEP

Connect the boot pin to the pad n.10 of the soldering lay-by pins then verify that the switch BOOT present on the F34DM011 is set in position ON.



BOSCH EDC17C49 CHRYSLER/FAL/JEEP
BOSCH EDC17C79 CHRYSLER/FAL/JEEP

EDC17C49 JEEP with AUTOMATIC TRANSMISSION

ECU CONNECTOR EDC17C49 JEEP

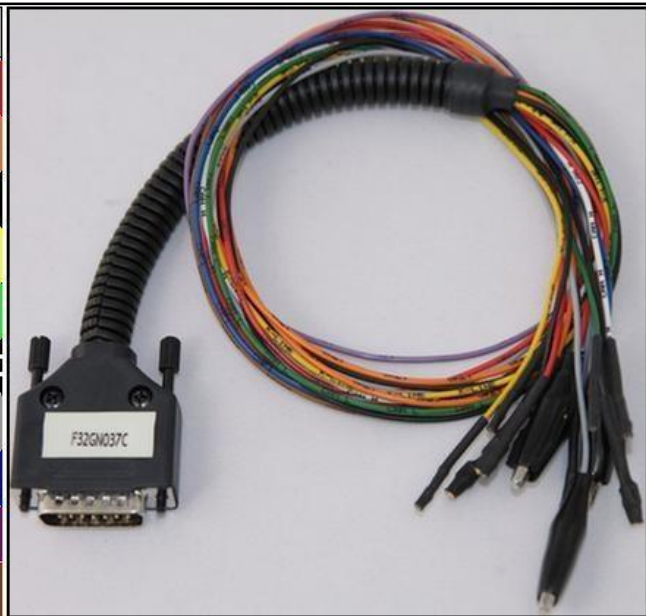
In order to connect to the ECU use the CABLE F32GN037C. Make sure that the POWER led (red) on Trasdata is ON.

Connect **only** the CAN H & CAN L wires (white/green)

Do not connect the 12V and GND wirings to the ECU connector.

For this ECU connection you **MUST** have and use for the connection the DIMA F34DM011, otherwise you **CANNOT** communicate with the ECU.

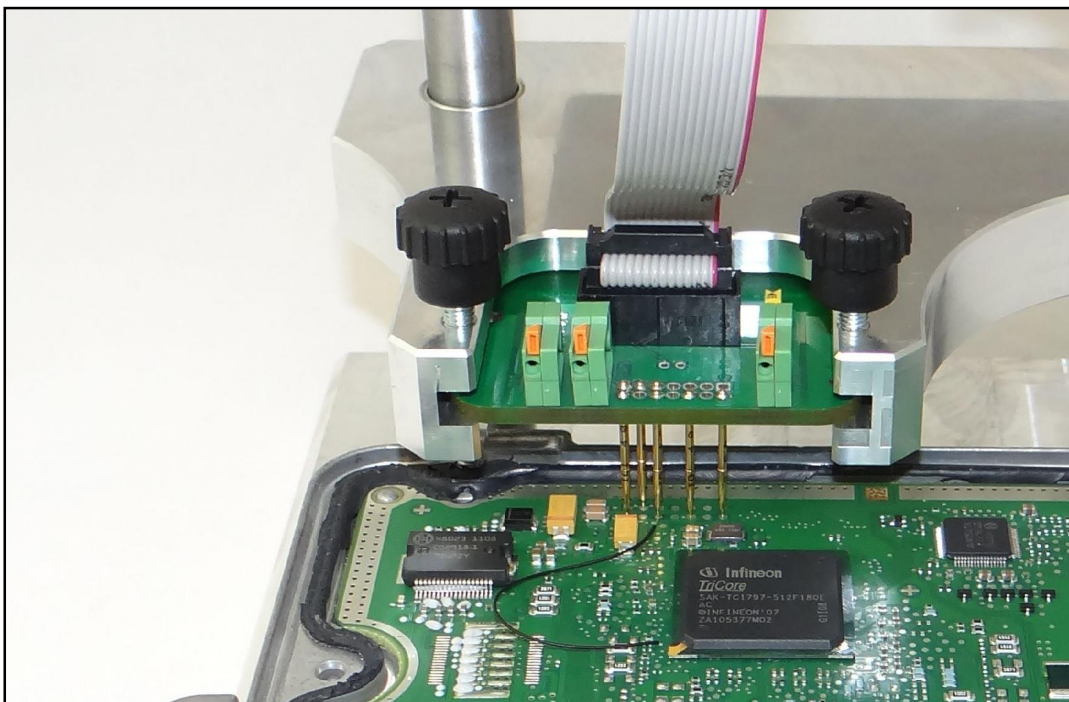
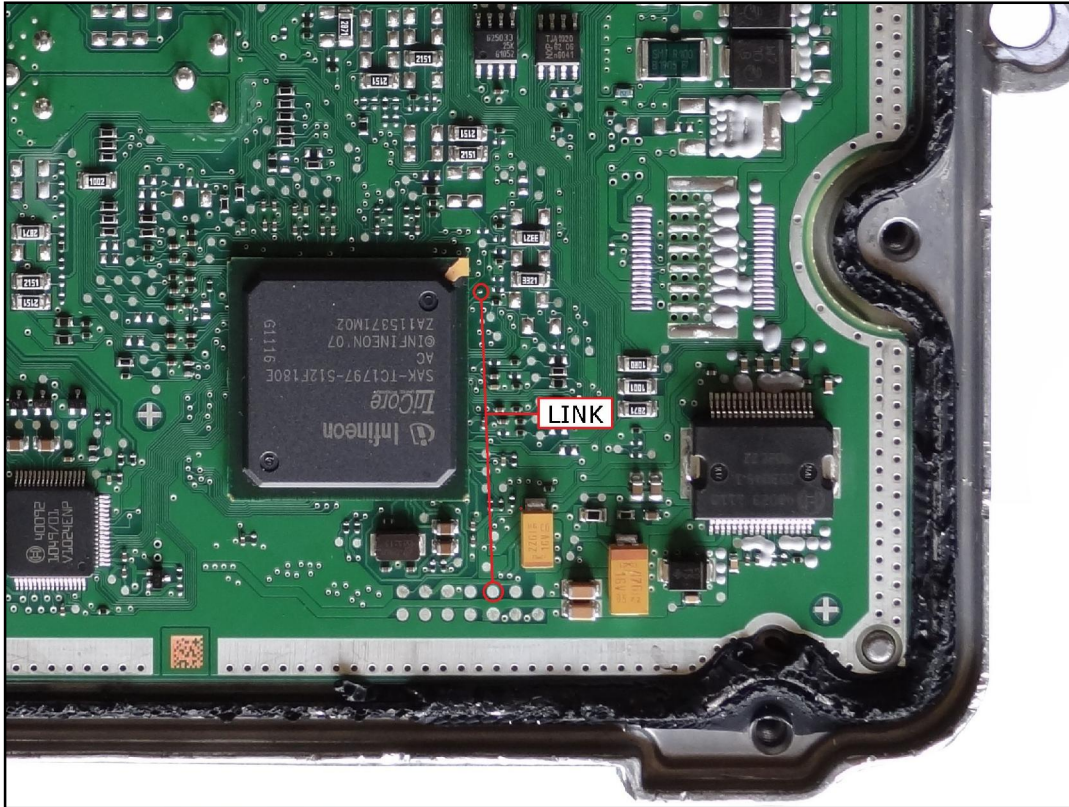
COLORE FILO WIRE COLOUR	DESCRIZIONE DESCRIPTION
ROSSO RED	POSITIVO DIRETTO POWER BATTERY
ARANCIO ORANGE	POSITIVO SOTTO QUADRO POWER SWITCH ON
NERO BLACK	MASSA GND
GIALLO YELLOW	KLINE
VERDE GREEN	CAN LOW
BIANCO WHITE	CAN HIGH
GRIGIO GREY	POL4 BOOT
BLU BLUE	POL5 CNF1
VIOLA/GRIGIO PURPLE/GREY	TENSIONE PROG. PROG. VOLTAGE
MARRONE BROWN	RESET



BOSCH EDC17C49 CHRYSLER/FAL/JEEP
BOSCH EDC17C79 CHRYSLER/FAL/JEEP

METAL POSITIONING FRAME CONNECTION
EDC17C49 JEEP

Connect the boot pin to the pad n.10 of the soldering lay-by pins then verify that the switch BOOT present on the F34DM011 is set in position ON.



BOSCH EDC17C49 CHRYSLER/FAL/JEEP
BOSCH EDC17C79 CHRYSLER/FAL/JEEP

