

BOSCH EDC17C50 IROM TC1797 GPT BMW

plugin 668 BOSCH EDC17C50 IROM TC1797 GPT BMW

GPT CONNECTION MODE

To perform the GPT connection it is necessary to use both the ANALOG PORT and the DIGITAL PORT.

GPT connection with loose wires

Connect the F32GN037 cable to the **ANALOG PORT**

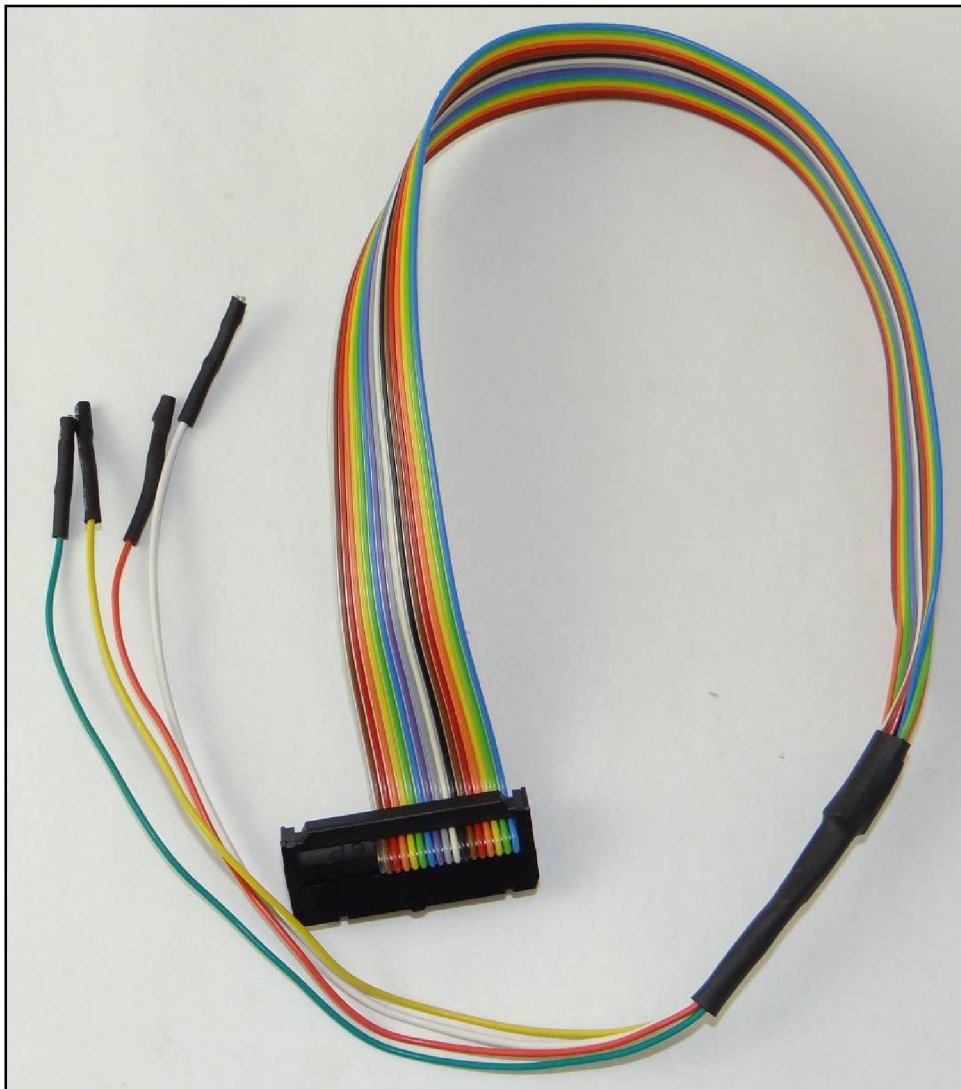
Connect the F34NTA15 to the **DIGITAL PORT**, use the YELLOW and ORANGE wires ONLY for the GPT signals as displayed in the following pictures.

GPT connection with DIMA

Connect the F32GN038 cable to the **ANALOG PORT**

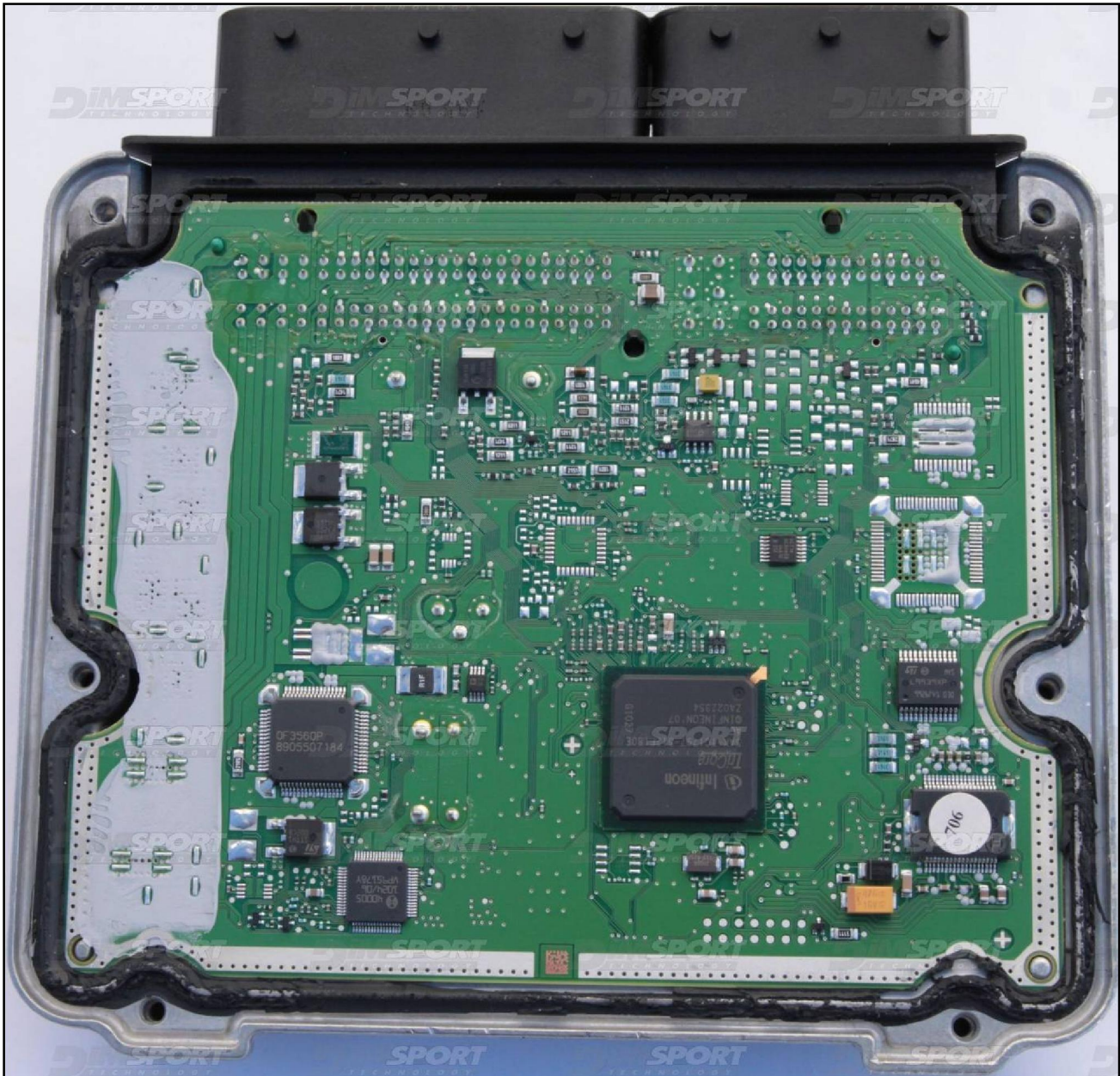
Connect the F34NTA15 to the **DIGITAL PORT**, use the YELLOW and ORANGE wires ONLY for the GPT signals as displayed in the following pictures.

F34NTA15



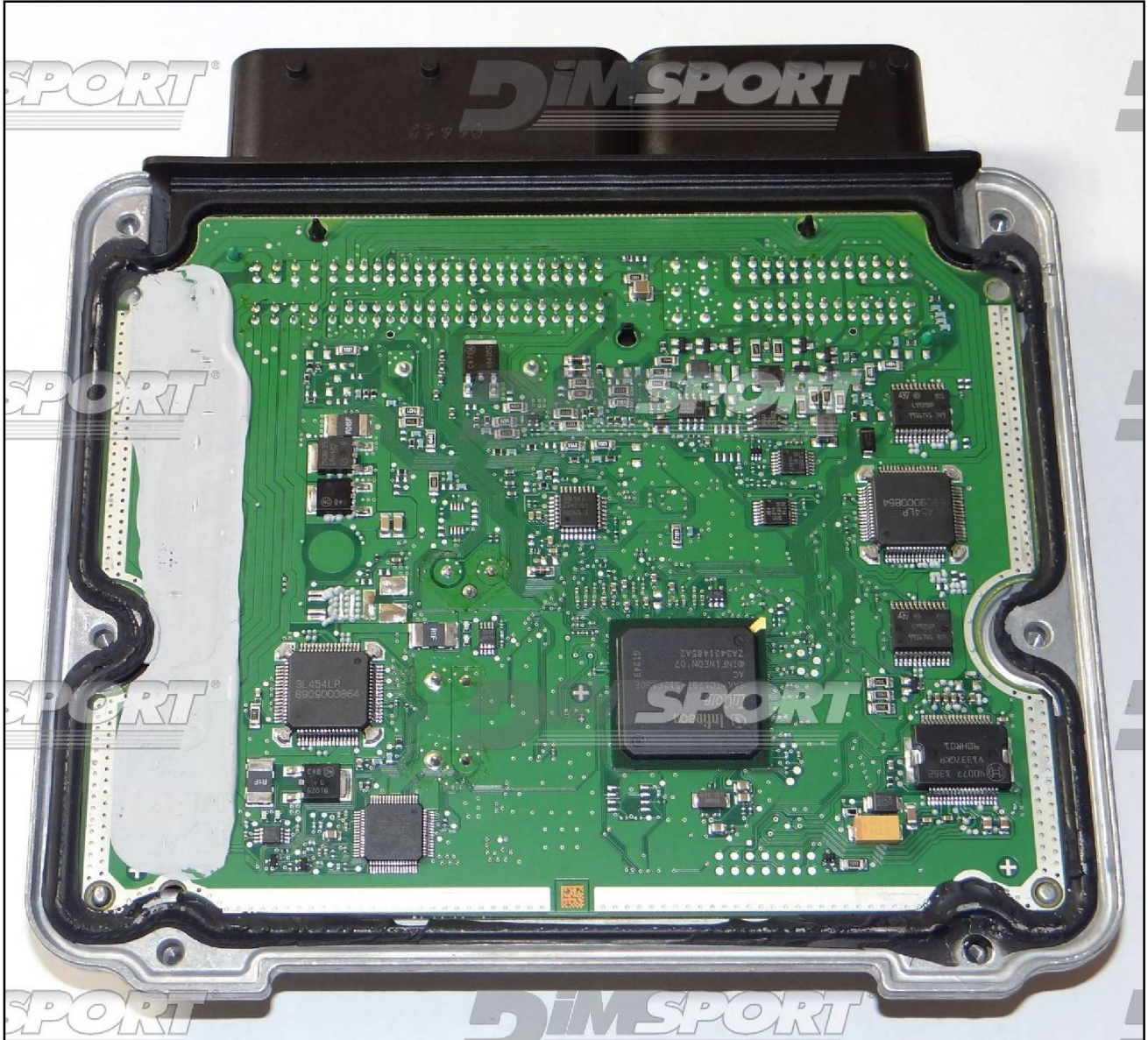
BOSCH EDC17C50 IROM TC1797 GPT BMW

EDC17C50 BMW (DDE701) DIESEL HW 01



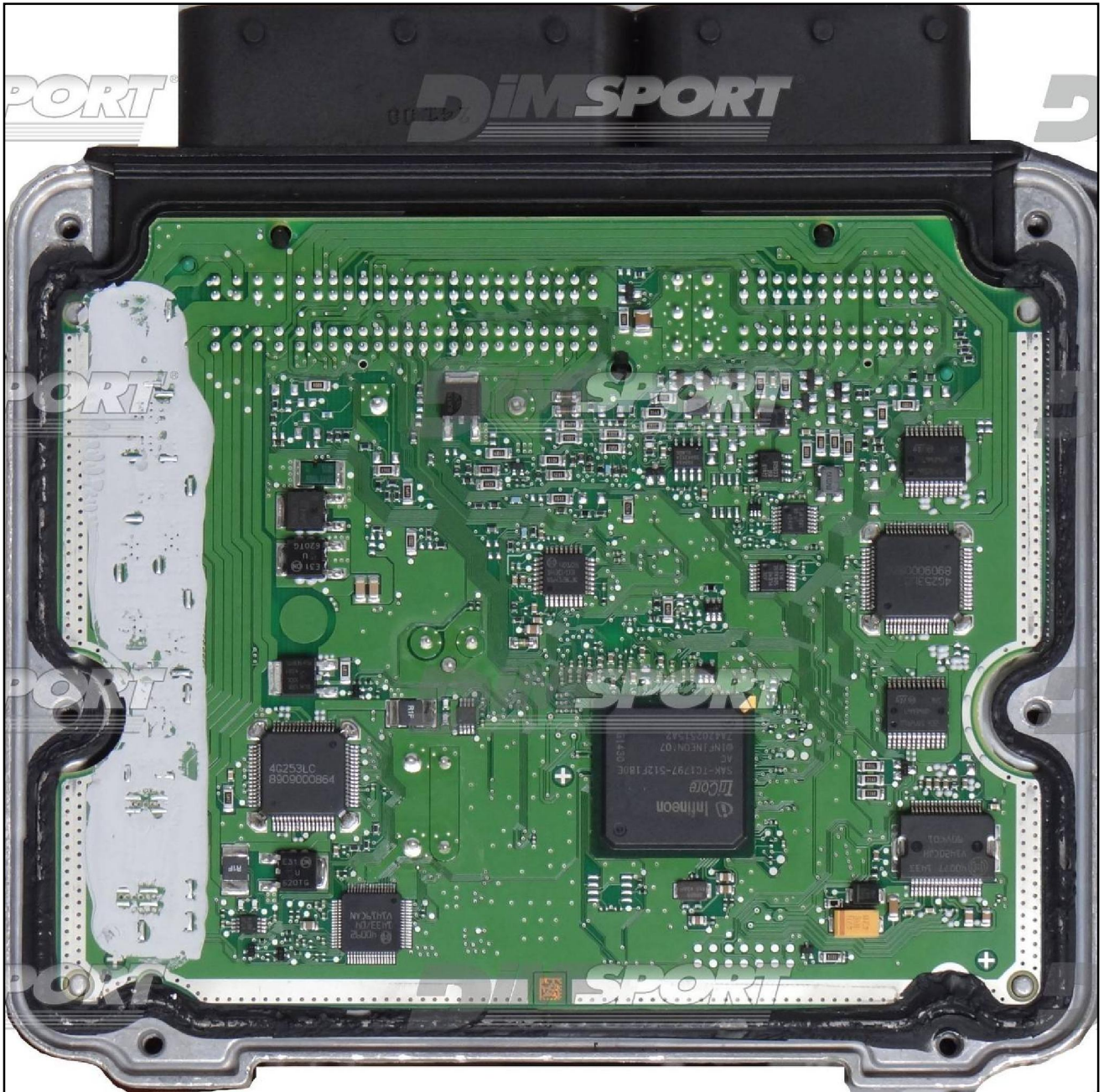
BOSCH EDC17C50 IROM TC1797 GPT BMW

EDC17C50 BMW (DDE701) DIESEL HW 02



BOSCH EDC17C50 IROM TC1797 GPT BMW

EDC17C50 BMW (DDE701) DIESEL HW 03



BOSCH EDC17C50 IROM TC1797 GPT BMW


ECU CONNECTOR

For the connection use the cable F32GN037C connected to the ECU.

Make sure that the POWER led (red) on Trasdata is ON.

Do not use this connection with the metal positioning frame kit, it will be the F34DM011 to power the ECU.

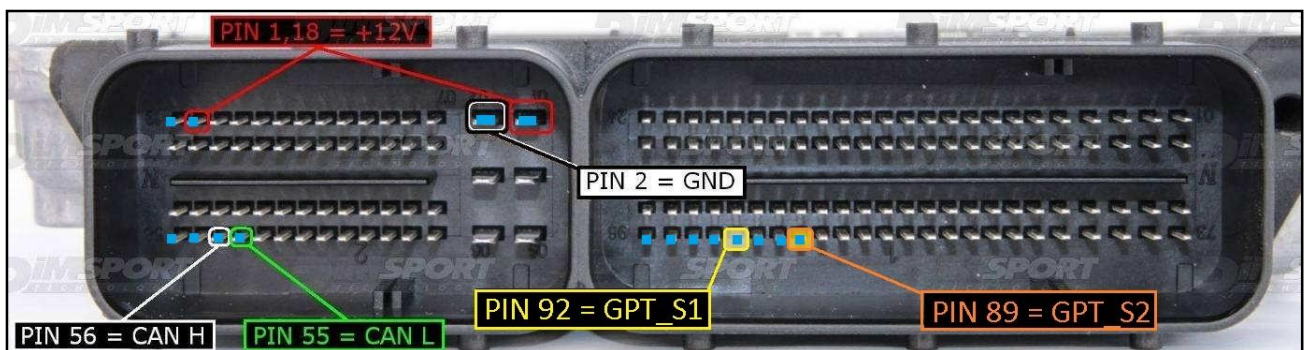
COLORE FILO WIRE COLOUR	DESCRIZIONE DESCRIPTION
ROSSO RED	POSITIVO DIRETTO POWER BATTERY
ARANCIO ORANGE	POSITIVO SOTTO QUADRO POWER SWITCH ON
NERO BLACK	MASSA GND
GIALLO YELLOW	KLINE
VERDE GREEN	CAN LOW
BIANCO WHITE	CAN HIGH
GRIGIO GREY	POL4 BOOT
BLU BLUE	POL5 CNF1
VIOLA/GRIGIO PURPLE/GREY	TENSIONE PROG. PROG. VOLTAGE
MARRONE BROWN	RESET



GPT DIRECT CONNECTION

GPT connection is required for the first time only, after the first ECU reading it is not necessary any longer. Connect the F34NTA15 flat cable to the GPT S1 & GPT S2 pins.

PIN / Colore PIN / Coulor	DESCRIZIONE DESCRIPTION
	GPT_S2
	GPT_S1

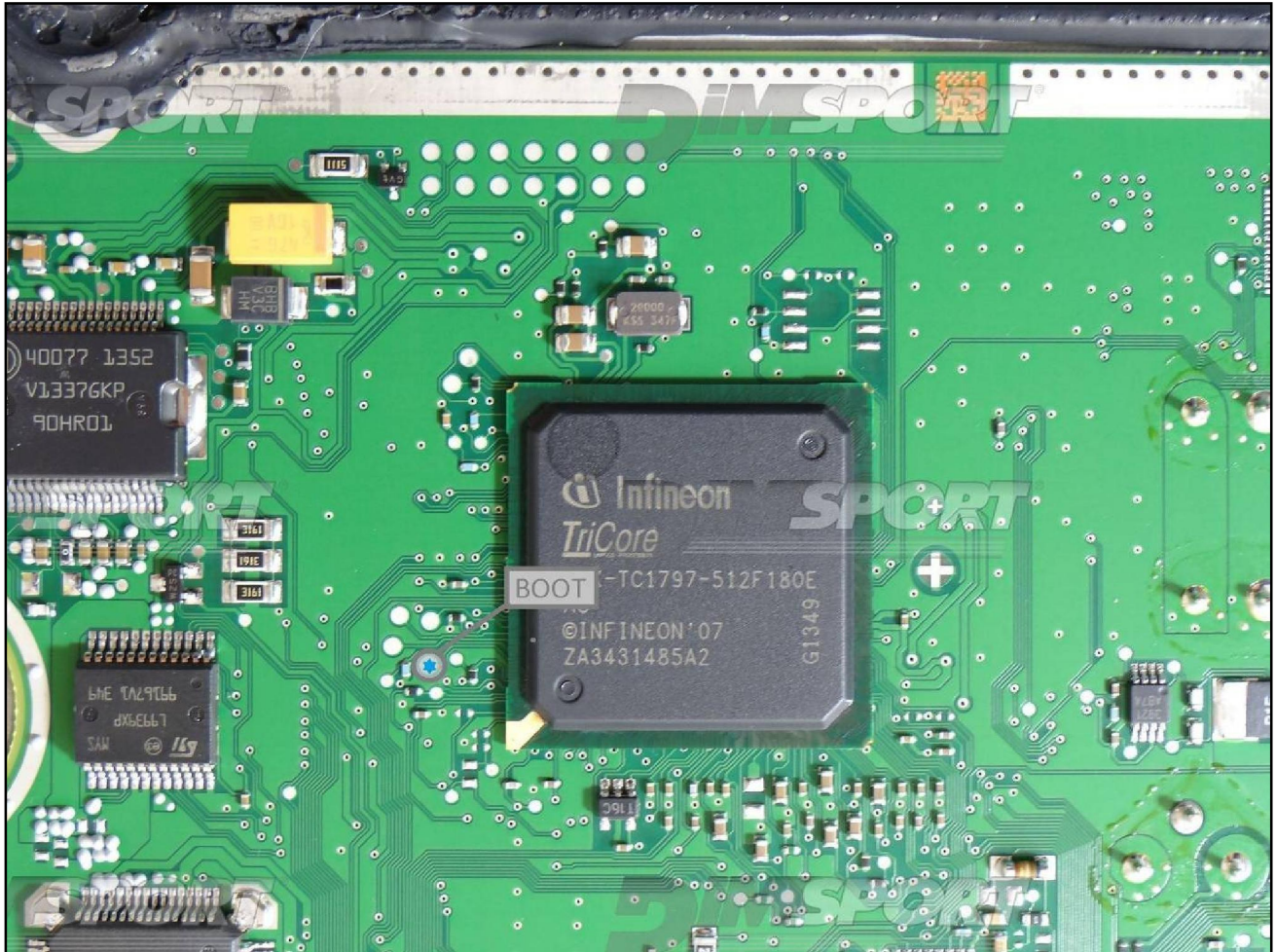


BOSCH EDC17C50 IROM TC1797 GPT BMW

BOOT CONNECTION

Connect the GREY wire of the cable F32GN037C as shown in the picture.

COLORE FILO WIRE COLOUR	DESCRIZIONE DESCRIPTION
GRIGIO	POL4
GREY	BOOT



BOSCH EDC17C50 IROM TC1797 GPT BMW

METAL POSITIONING FRAME & BNP POSITIONING FRAME CONNECTION

For the DIMA connection is required the F34DM011 adapter + the F32GN038 flat cable. Connect the F32GN038 FLAT cable to the ANALOG PORT and to the F34DM011 adapter. Connect the F34NTA15 flat cable to the DIGITAL PORT and to the ECU as described at pg.5 . Perform the connections as shown in the previous detail at pg.6 using for the BOOT signal the specific clamp on the F34DM011 adapter (verify that the yellow BOOT switch present on the F34DM011 is set in position ON).

