

BOSCH EDC17C53 IROM TC1767 MAHINDRA

plugin 470 : GWM-JAC

Plugin 558 : Mahindra

Plugin 608 : Hyundai - Kia

Plugin 920 : LDV- DF YuFeng

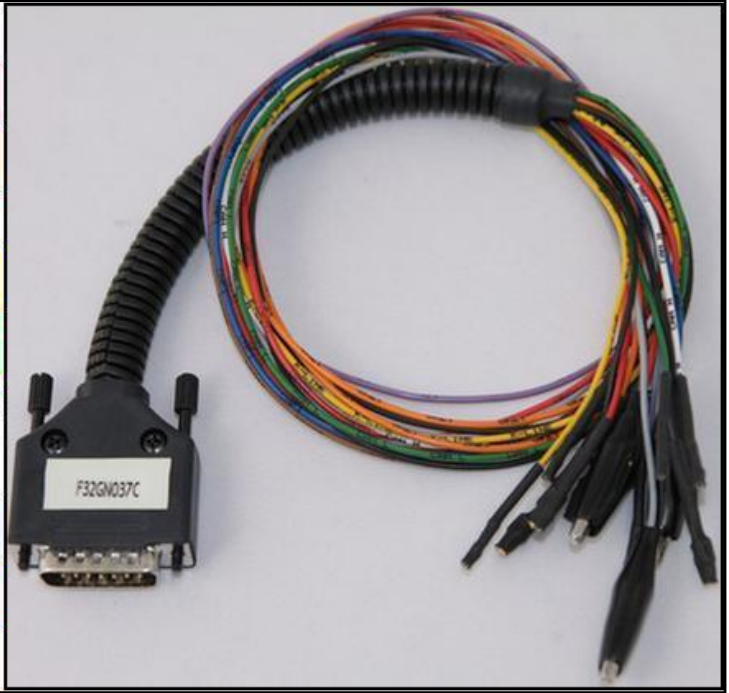


BOSCH EDC17C53 IROM TC1767 MAHINDRA

DIRECT CONNECTION

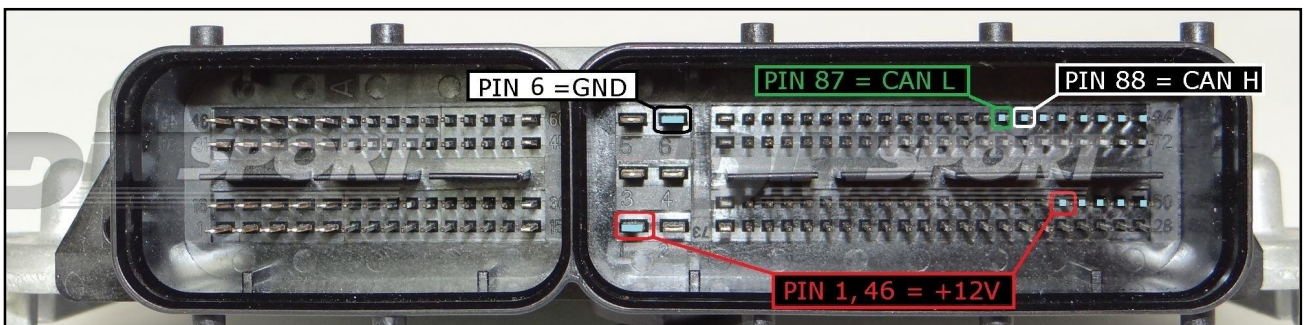
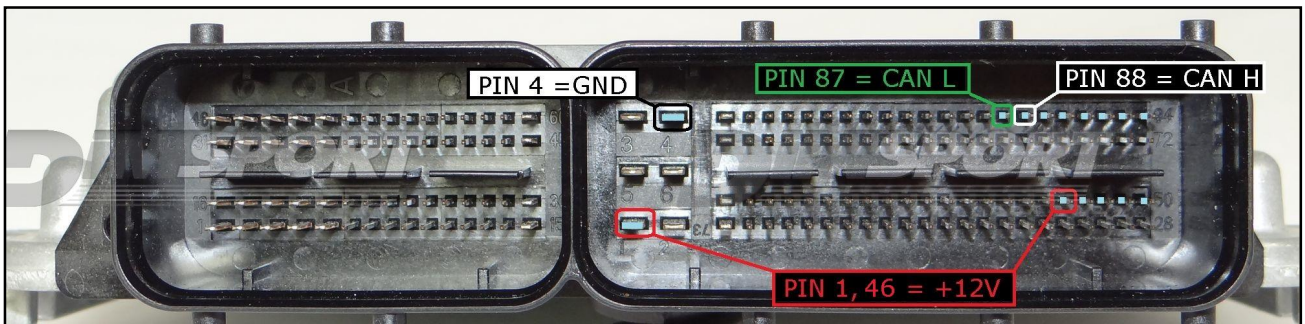
In order to connect to the ECU use the CABLE F32GN037C.
 Make sure that the POWER led (red) on Trasdata is ON.

COLORE FILO WIRE COLOUR	DESCRIZIONE DESCRIPTION
ROSSO RED	POSITIVO DIRETTO POWER BATTERY
ARANCIO ORANGE	POSITIVO SOTTO QUADRO POWER SWITCH ON
NERO BLACK	MASSA GND
GIALLO YELLOW	KLINE
VERDE GREEN	CAN LOW
BIANCO WHYTE	CAN HIGH
GRIGIO GREY	POL4 BOOT
BLU BLUE	POL5 CNF1
VIOLA/GRIGIO PURPLE/GREY	TENSIONE PROG. PROG. VOLTAGE
MARRONE GREY	RESET



ECU CONNECTOR

Warning: depending on the ECU the pin for the GND signal can be pointed out with a different number.



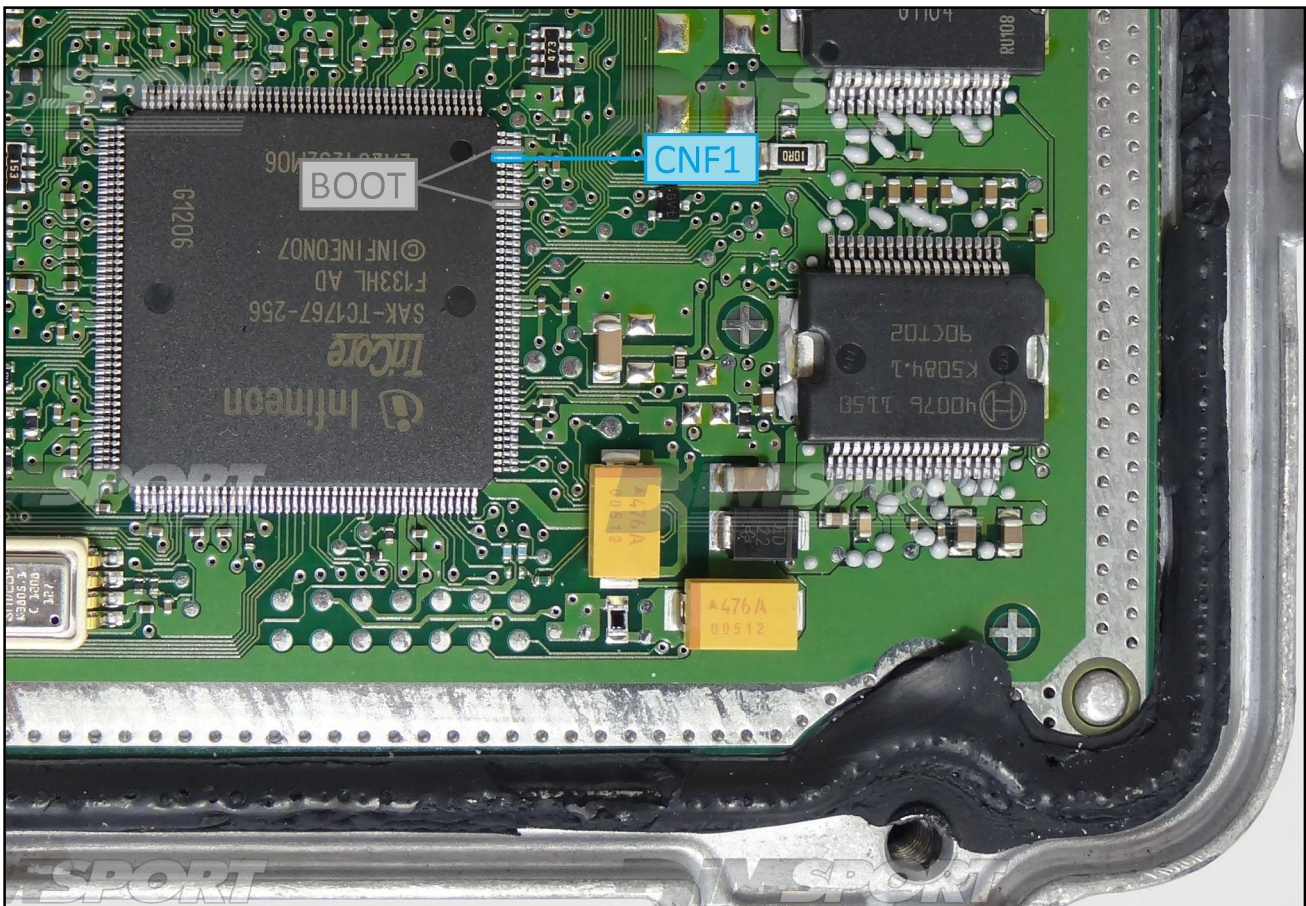
BOSCH EDC17C53 IROM TC1767 MAHINDRA

BOOT/CNF1 CONNECTION

Connect the GREY and BLUE wires of the cable F32GN037C as described here below :

COLORE FILO WIRE COLOUR	DESCRIZIONE DESCRIPTION
GRIGIO GREY	POL4 BOOT
BLU BLUE	POL5 CNF1

To connect on the microprocessor pins you have two different solutions described in the following page.



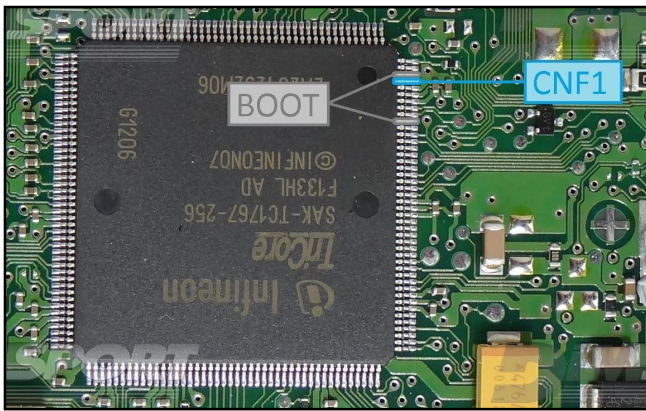
BOSCH EDC17C53 IROM TC1767 MAHINDRA

To connect on the micro controller you have two different solutions:

1. For a correct and **safe** connection to the BOOT and CNF1 microprocessor pins is possible to use our specific micro clamps/hooks (cod. C34ACD012). **Warning:** do not use other types of micro clamps, only these are completely insulated, otherwise the risk is to damage the microprocessor. Hook the two BOOT pins with two micro clamps and connect them to the grey BOOT wire of the F32GN037C cable.

Hook the CNF1 pin with another micro clamp and connect it to the blue CNF1 wire of the F32GN037C cable.

COLORE FILO WIRE COLOUR	DESCRIZIONE DESCRIPTION
GRIGIO GREY	POL4 BOOT
BLU BLUE	POL5 CNF1



2. A second possible way is:

-soldering a wire on the two BOOT pins and connect them to the grey BOOT wire of the F32GN037C cable.

-soldering a wire on the CNF1 pin and connect it to the blue CNF1 wire of the F32GN037C cable.

COLORE FILO WIRE COLOUR	DESCRIZIONE DESCRIPTION
GRIGIO GREY	POL4 BOOT
BLU BLUE	POL5 CNF1

