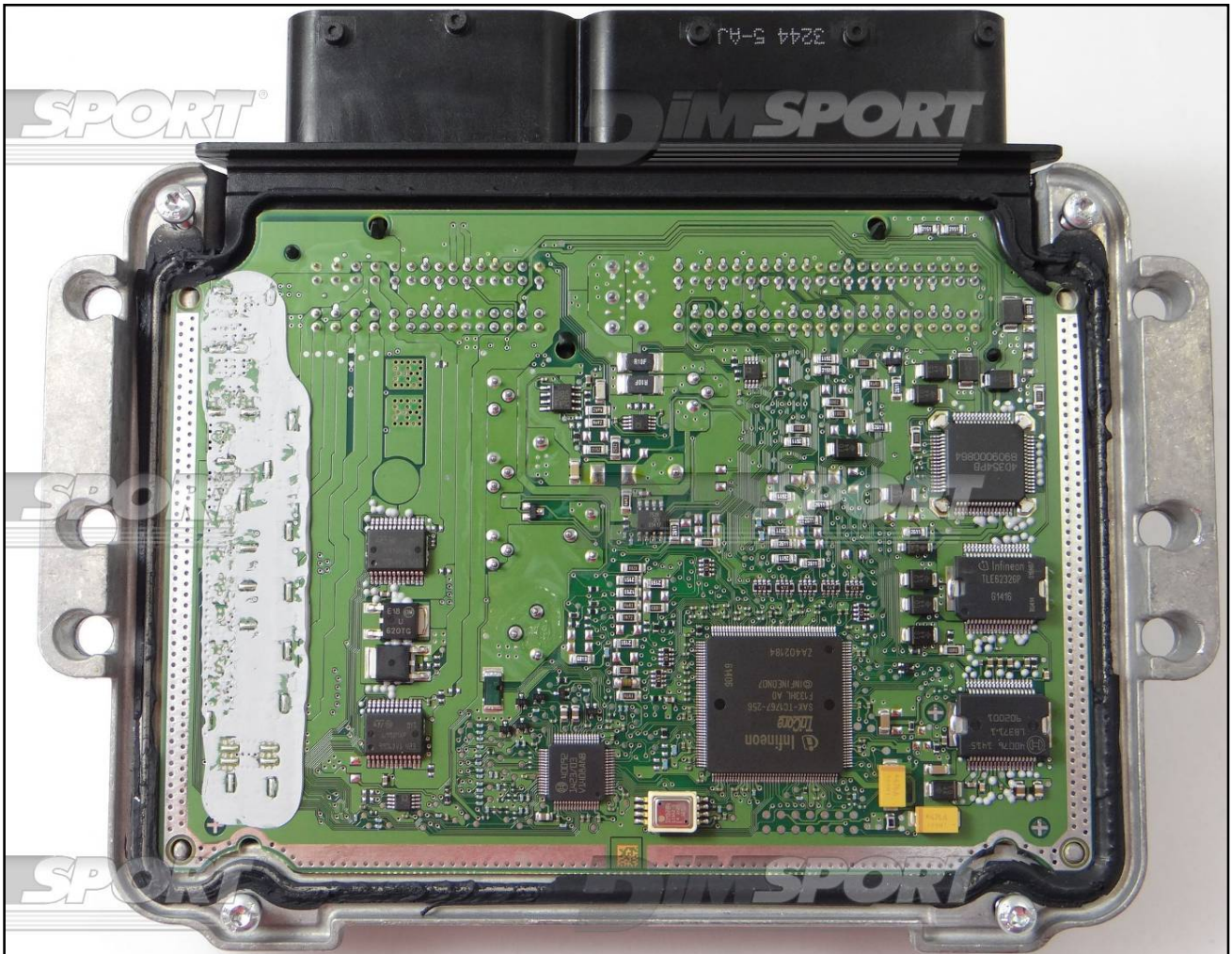


BOSCH EDC17C53 IROM TC1767 SAME

plugin 654



BOSCH EDC17C53 IROM TC1767 SAME

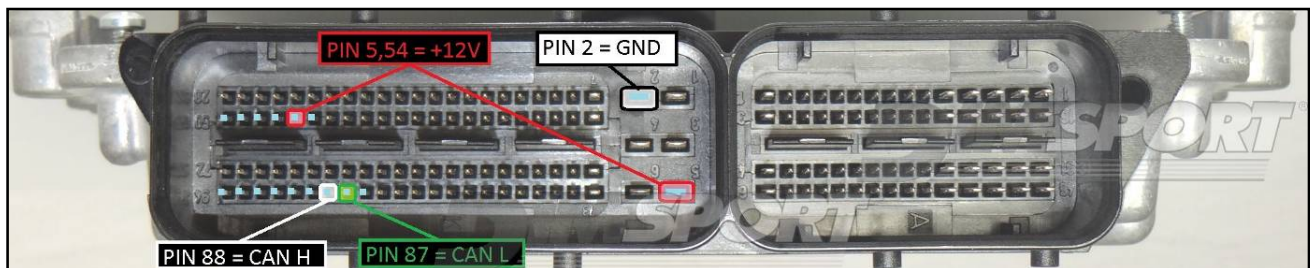
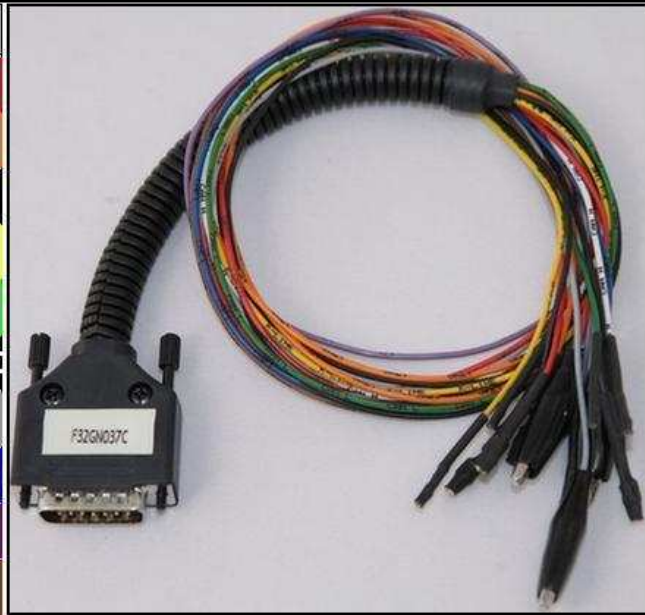


BOSCH EDC17C53 IROM TC1767 SAME

ECU CONNECTOR

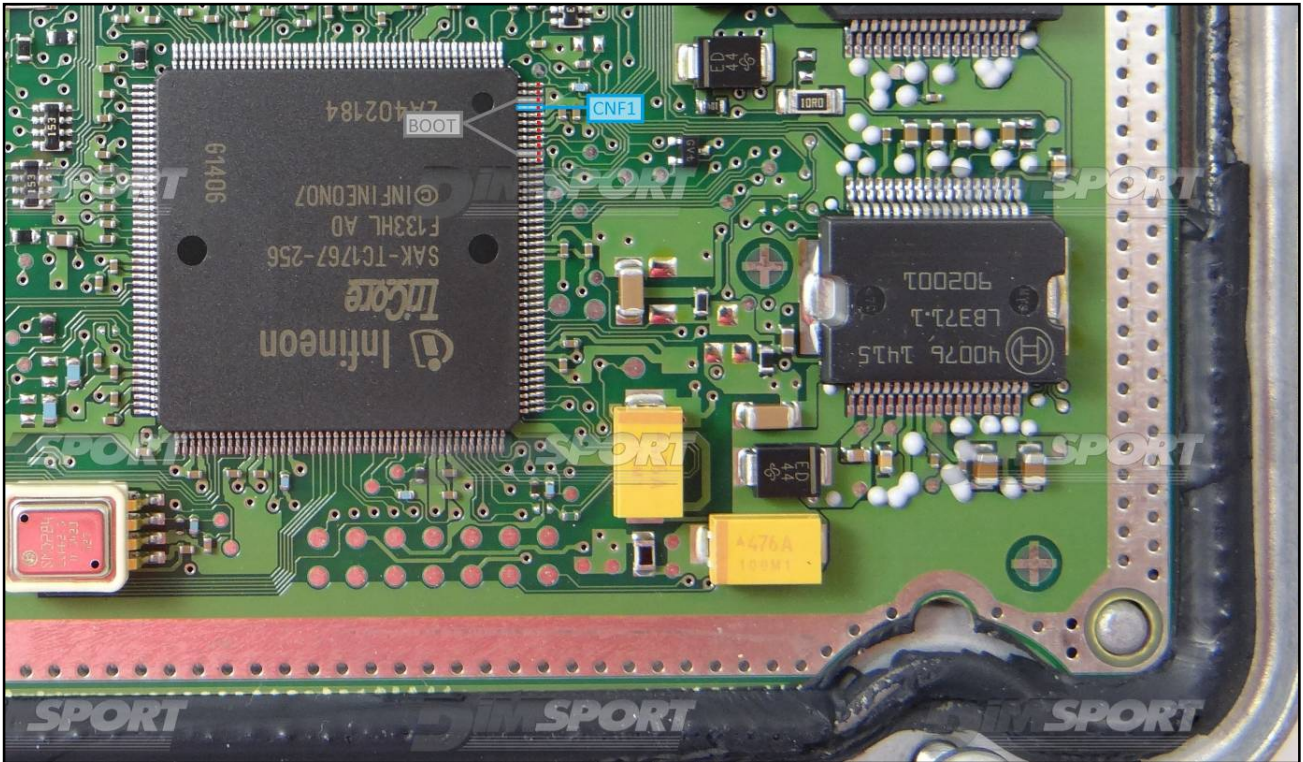
In order to connect to the ECU use the CABLE F32GN037C/D.
 Make sure that the POWER led (red) on Trasdata is ON.
 Do not use this connection with the DIMA kit

COLORE FILO WIRE COLOUR	DESCRIZIONE DESCRIPTION
ROSSO RED	POSITIVO DIRETTO POWER BATTERY
ARANCIO ORANGE	POSITIVO SOTTO QUADRO POWER SWITCH ON
NERO BLACK	MASSA GND
GIALLO YELLOW	KLINE
VERDE GREEN	CAN LOW
BIANCO WHITE	CAN HIGH
GRIGIO GREY	POL4 BOOT
BLU BLUE	POL5 CNF1
VIOLA/GRIGIO PURPLE/GREY	TENSIONE PROG. PROG. VOLTAGE
MARRONE BROWN	RESET



BOSCH EDC17C53 IROM TC1767 SAME

BOOT & CNF1 PIN CONNECTION



WARNING

For a correct connection to the pins of the microprocessor there exist the following ways:

- 1) Solder the BOOT & CNF1 wires directly on the microprocessor pins (**NOT RECOMMENDED!!**)
- 2) Use the BNP DIMA with the needles
- 3) Use the specific micro clamps of the C34ACD012 KIT (**RECOMMENDED!!**)

BOSCH EDC17C53 IROM TC1767 SAME

BOOT & CNF1 PIN CONNECTION with BNP DIMA

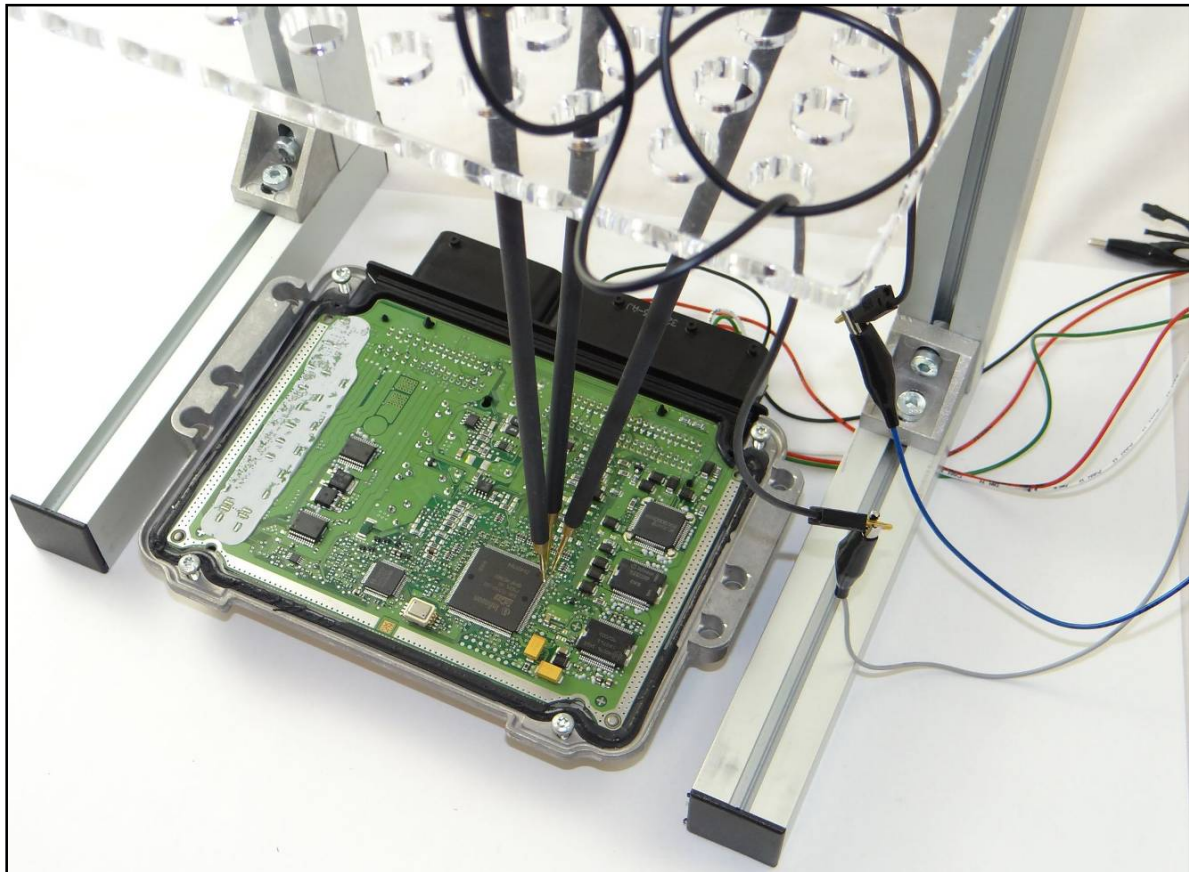
Such connection can be used both with loose wires or with F34DM011 DIMA adapter.

On the 1st case you will connect the needles to the loose wires of the F32GN037C/D cable (see pic.).

On the 2nd case the needles' wires must be connected in the specific clamps on the F34DM011.



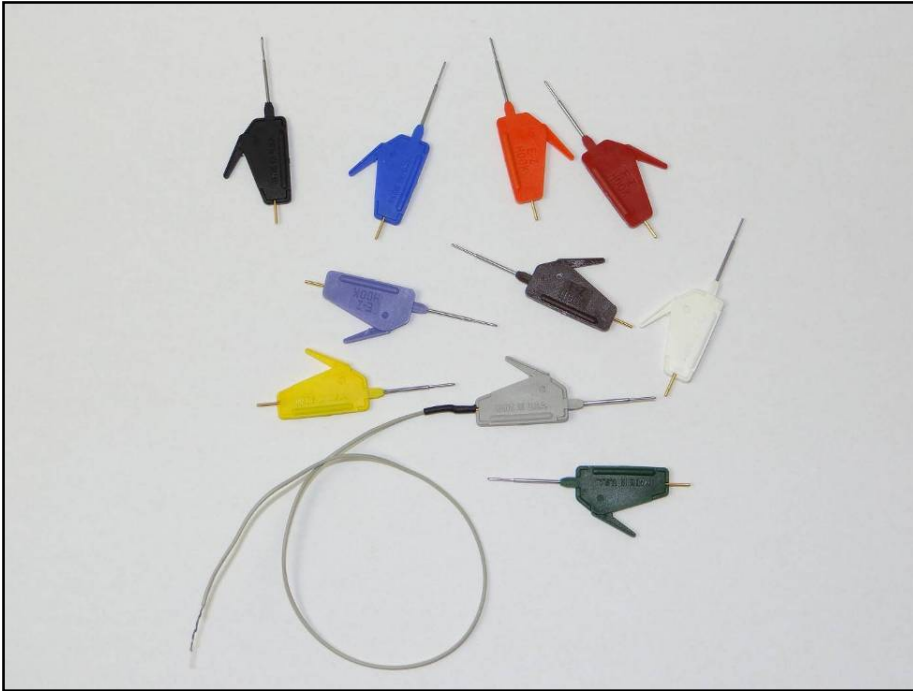
Loose wires connection with BNP DIMA and its needles.



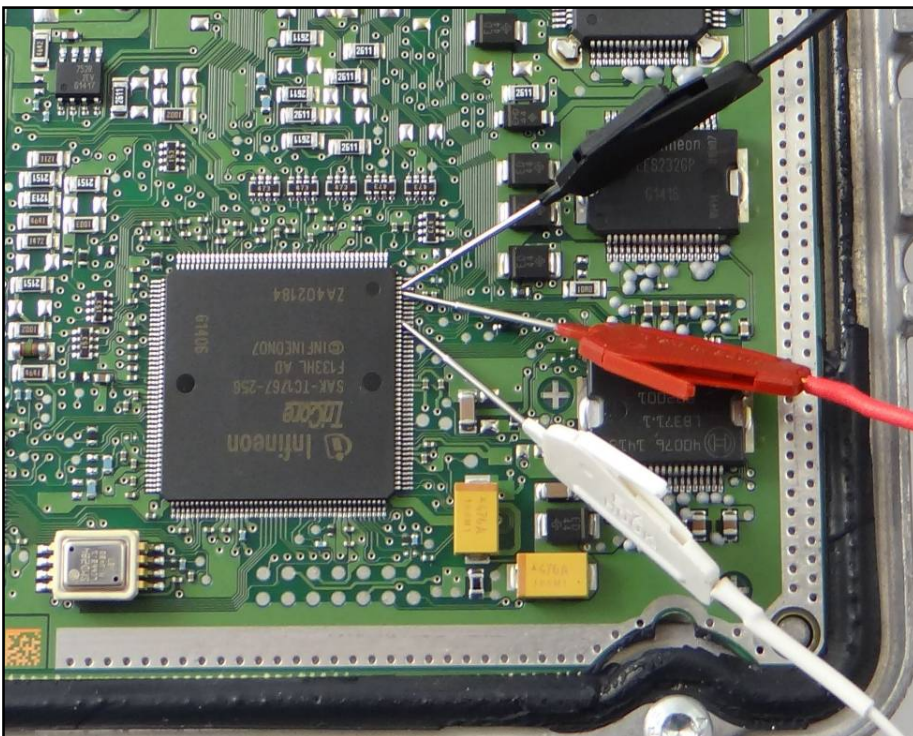
BOSCH EDC17C53 IROM TC1767 SAME

BOOT & CNF1 PIN CONNECTION with micro clamps

For a correct BOOT pin connection you MUST use a specific micro clamp supplied in the kit C34ACD012. **Warning:** do not use other types of micro clamps, only these are completely insulated, otherwise the risk is to damage the microprocessor.



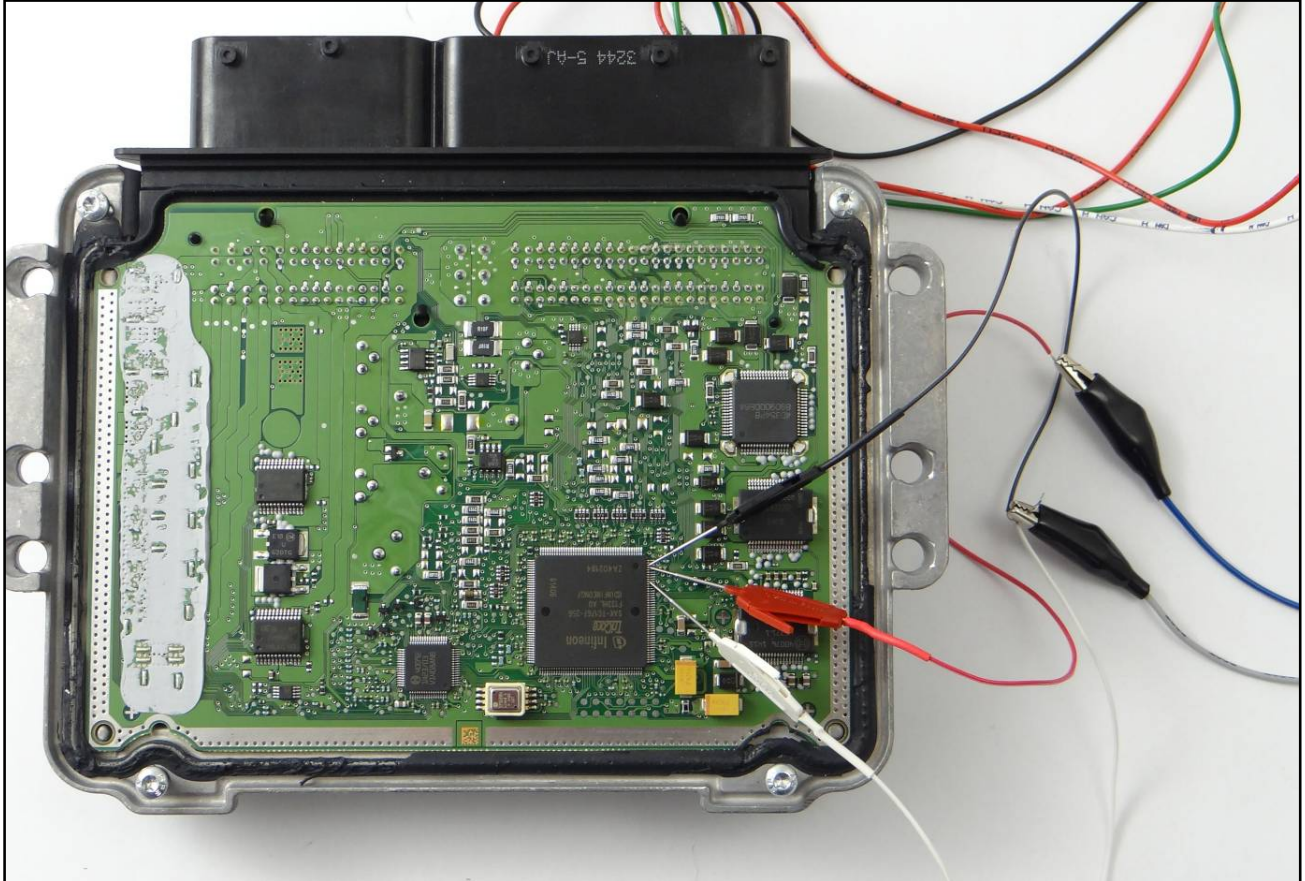
The colours of the micro clamps are merely indicative



BOSCH EDC17C53 IROM TC1767 SAME

DIRECT CONNECTION with micro clamps

The colours of the micro clamps are merely indicative



BOSCH EDC17C53 IROM TC1767 SAME

DIMA CONNECTION with micro clamps

The colours of the micro clamps are merely indicative

