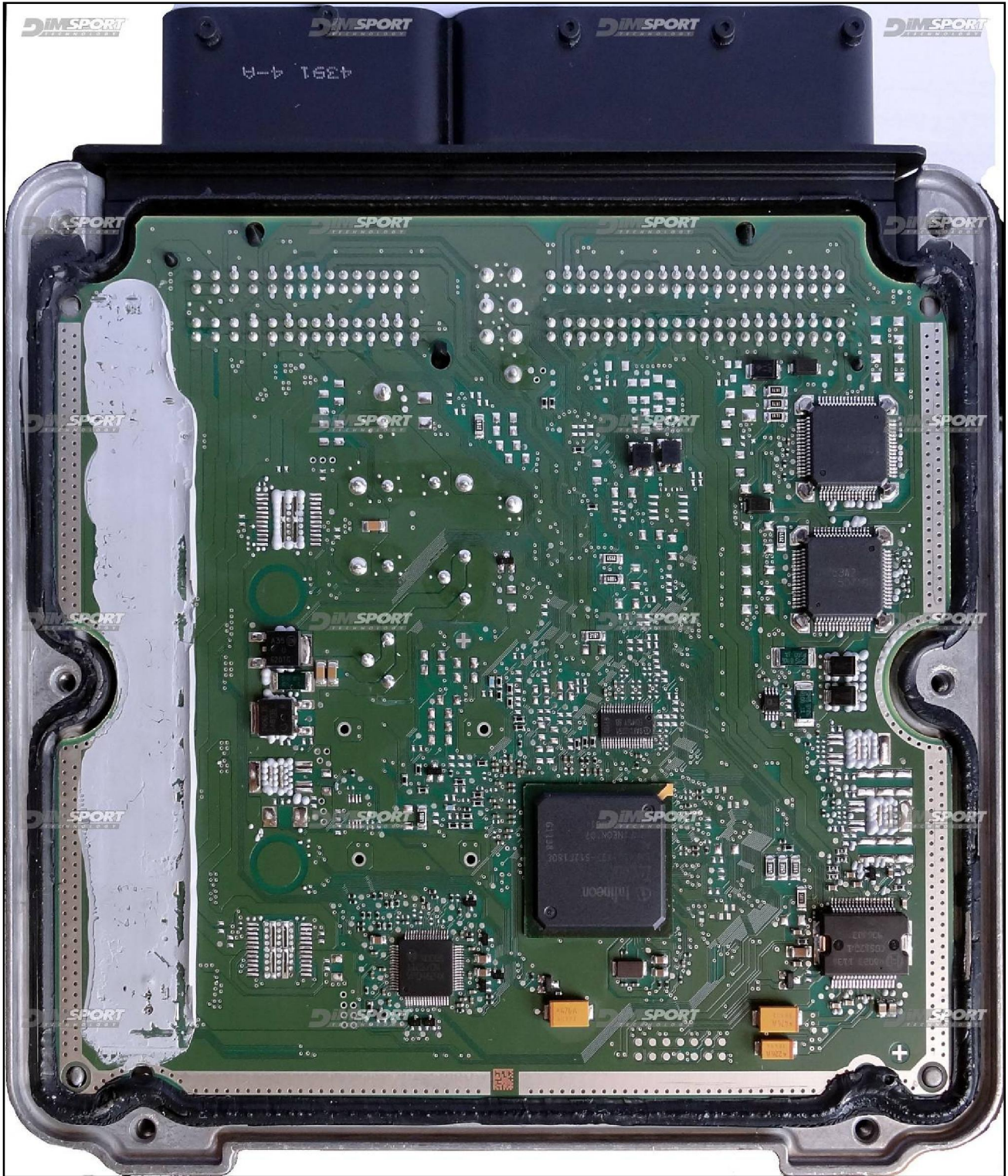


BOSCH EDC17C54 IROM TC1797 VAG

plugin 420





## BOSCH EDC17C54 IROM TC1797 VAG

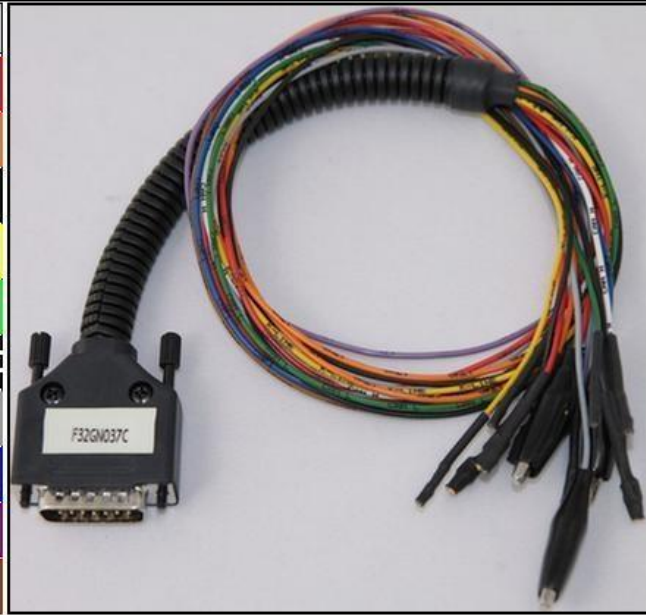
### DIRECT CONNECTION

In order to connect to the ECU use the CABLE F32GN037C.

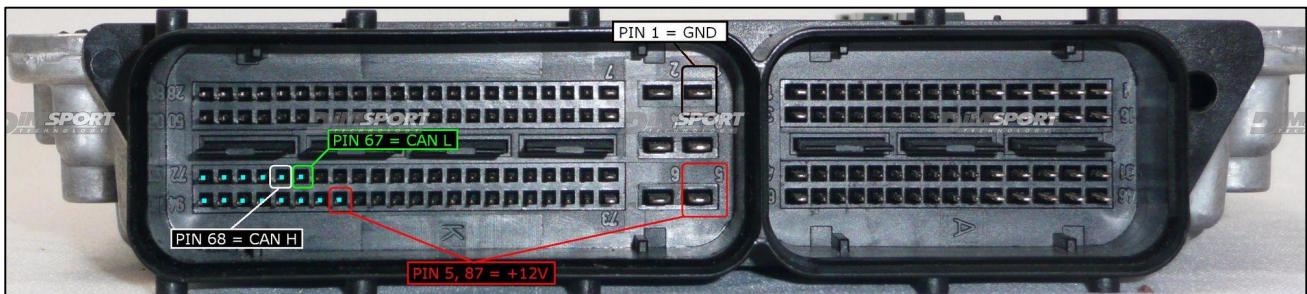
Make sure that the POWER led (red) on Trasdata is ON.

Do not use this connection with the KIT DIMA.

COLORE FILO WIRE COLOUR		DESCRIZIONE DESCRIPTION
ROSSO RED		POSITIVO DIRETTO POWER BATTERY
ARANCIO ORANGE		POSITIVO SOTTO QUADRO POWER SWITCH ON
NERO BLACK		MASSA GND
GIALLO YELLOW		KLINE
VERDE GREEN		CAN LOW
BIANCO WHITE		CAN HIGH
GRIGIO GREY		POL4 BOOT
BLU BLUE		POL5 CNF1
VIOLA/GRIGIO PURPLE/GREY		TENSIONE PROG. PROG. VOLTAGE
MARRONE BROWN		RESET



### ECU CONNECTOR





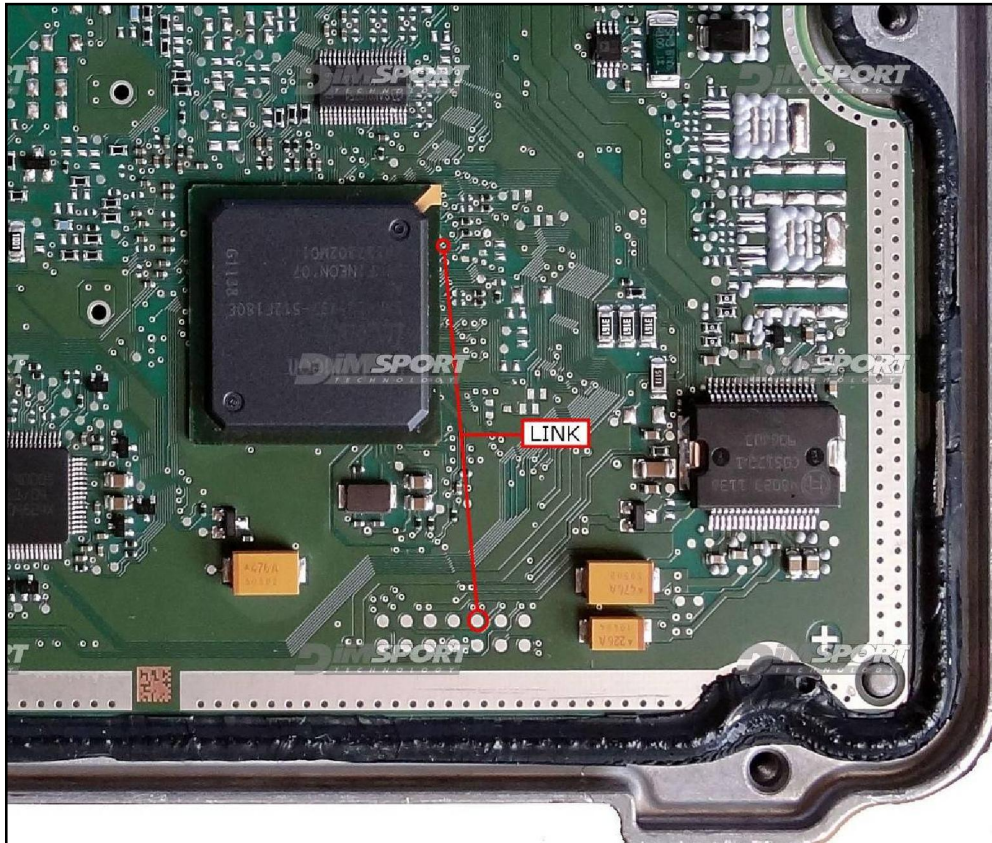


## BOSCH EDC17C54 IROM TC1797 VAG

### DIMA CONNECTION

For the DIMA connection is required the F34DM011 DIMA adapter.

Connect the boot pin to the pad n.10 of the soldering lay-by pins then verify that the switch BOOT present on the F34DM011 is set in position ON.



A different solution is to connect the BOOT wire directly to the orange BOOT clamp on the DIMA adapter F34DM011. Check that the yellow BOOT jumper is set in ON position. Connect the DIMA flat cable to the Trasdata.

The following picture of the DIMA adapter F34DM011 connection is merely indicative.

