

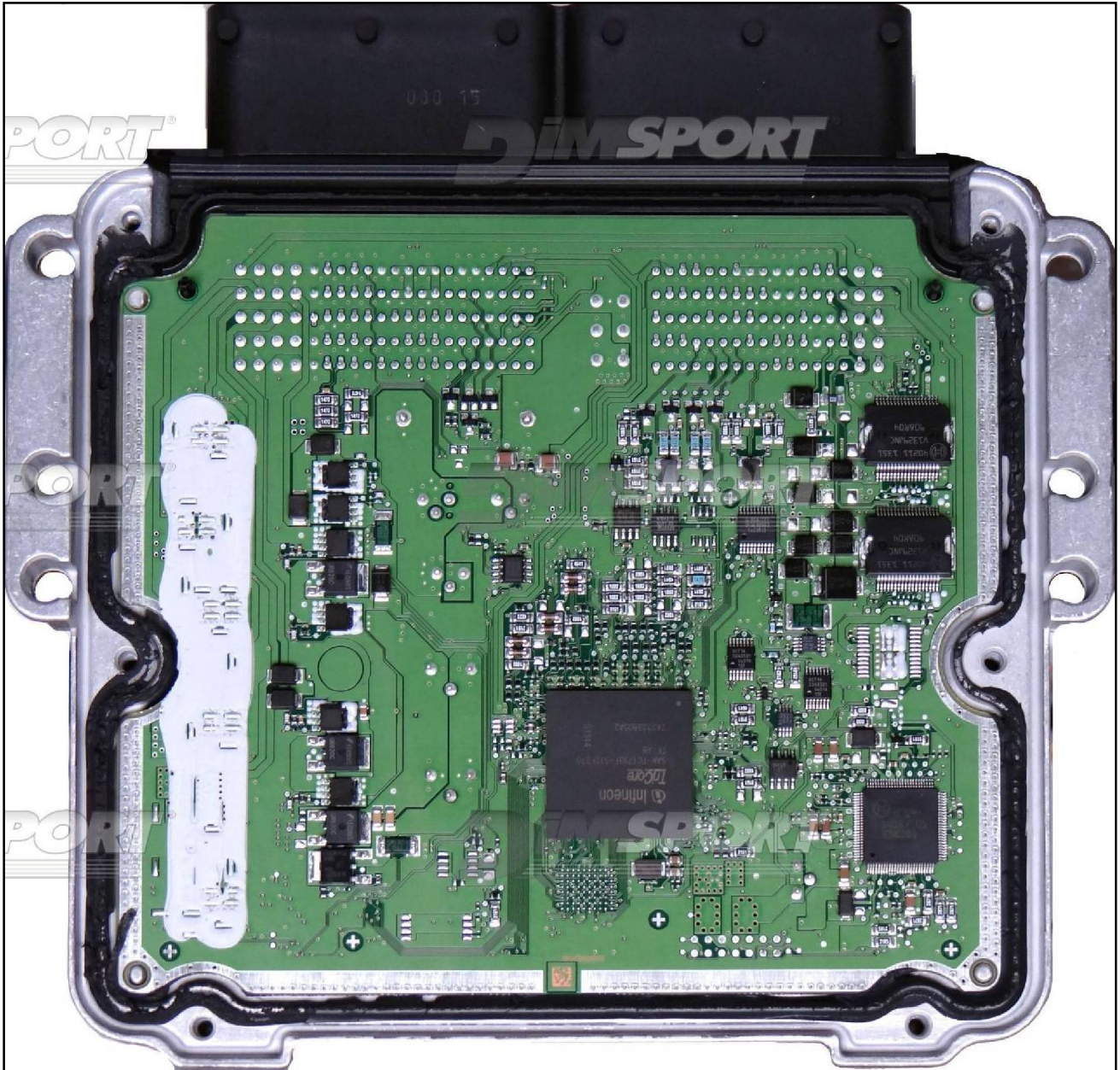
BOSCH EDC17C83 TC1793 IROM ISUZU

plugin **1103**

WARNING: in order to work properly on this ECU it is necessary to use the specific micro-clamp connected to the BOOT signal of the microprocessor.
Read carefully the following instructions.



BOSCH EDC17C83 TC1793 IROM ISUZU



BOSCH EDC17C83 TC1793 IROM ISUZU

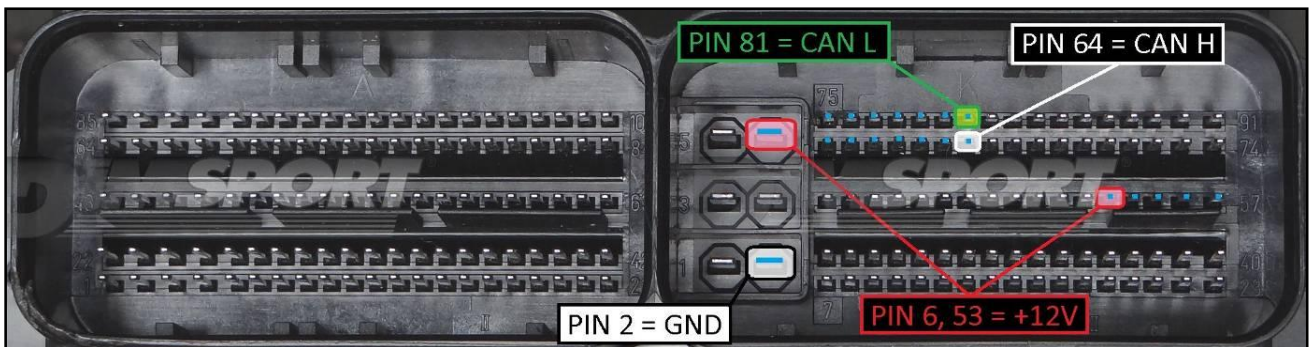
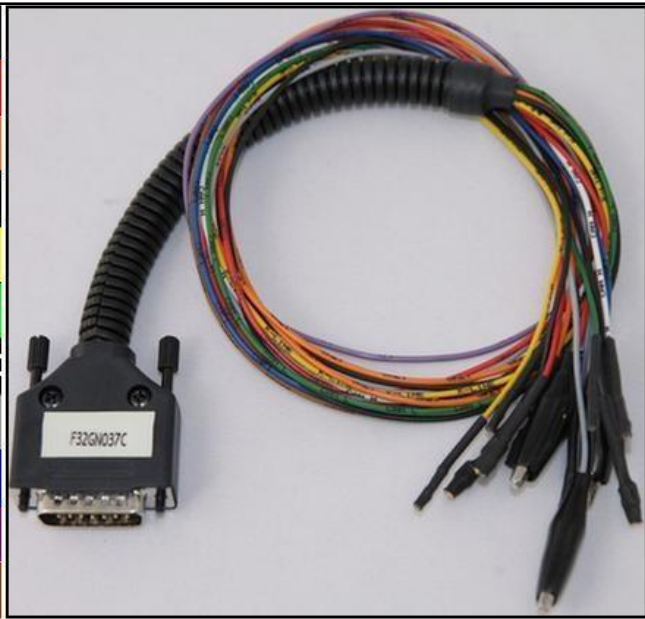
ECU CONNECTOR

In order to connect to the ECU use the CABLE F32GN037C.

Make sure that the POWER led (red) on Trasdata is ON.

DO not use this connection with the metal positioning frame, it will be the F34DM011 to power the ECU.

COLORE FILO WIRE COLOUR	DESCRIZIONE DESCRIPTION
ROSSO RED	POSITIVO DIRETTO POWER BATTERY
ARANCIO ORANGE	POSITIVO SOTTO QUADRO POWER SWITCH ON
NERO BLACK	MASSA GND
GIALLO YELLOW	KLINE
VERDE GREEN	CAN LOW
BIANCO WHITE	CAN HIGH
GRIGIO GREY	POL4 BOOT
BLU BLUE	POL5 CNF1
VIOLA/GRIGIO PURPLE/GREY	TENSIONE PROG. PROG. VOLTAGE
MARRONE BROWN	RESET



BOSCH EDC17C83 TC1793 IROM ISUZU

DIRECT BOOT CONNECTION

Connect the GREY wire of the cable F32GN037C as shown in the picture.

COLORE FILO WIRE COLOUR	DESCRIZIONE DESCRIPTION
GRIGIO GREY	POL4 BOOT

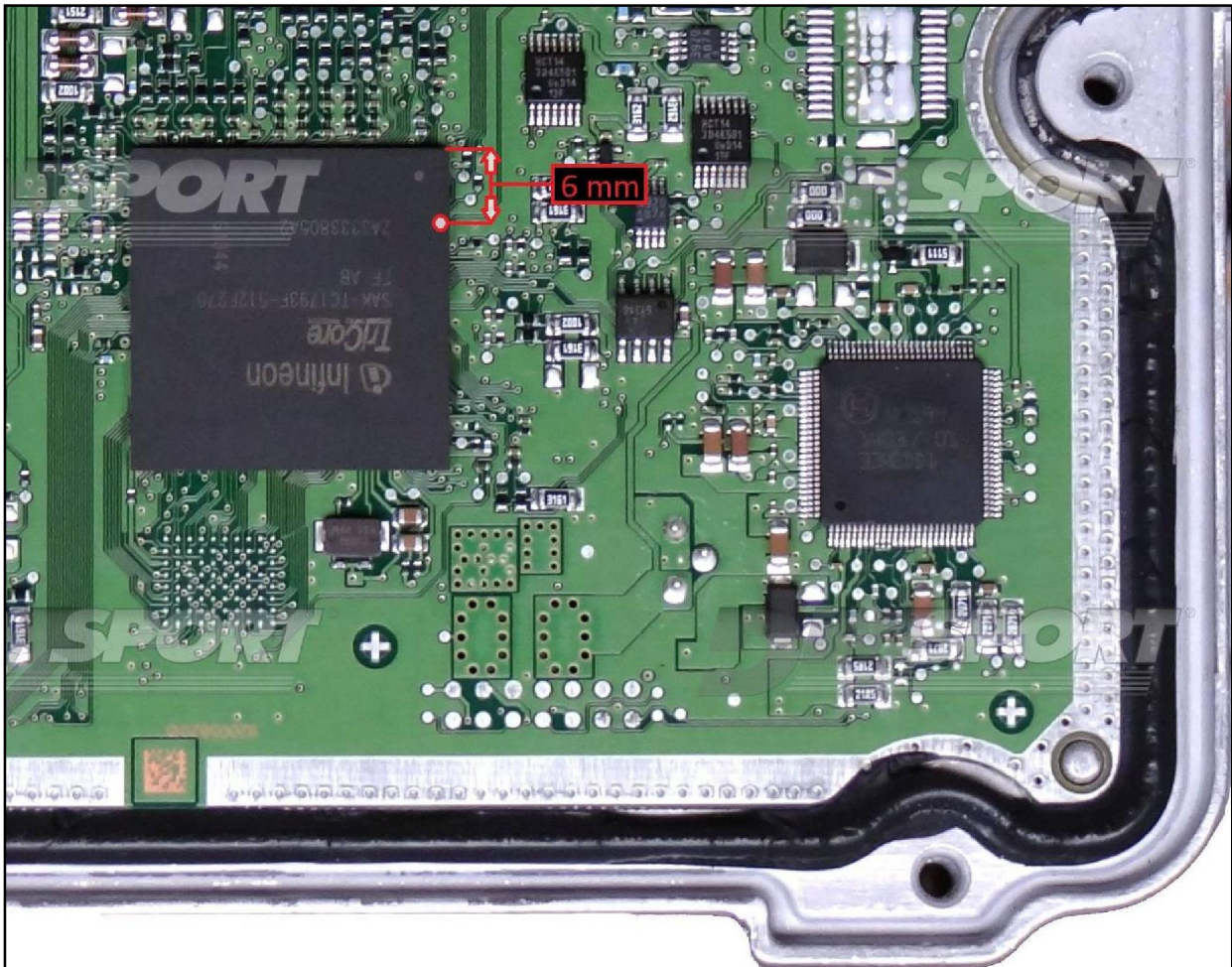
For a correct BOOT pin connection you MUST use a specific micro clamp supplied in the Trasdata kit or available as a spare part C34ACD012 / C34ACD0013 .

Warning: do not use other types of micro clamps, only these are completely insulated, otherwise the risk is to damage the microprocessor.

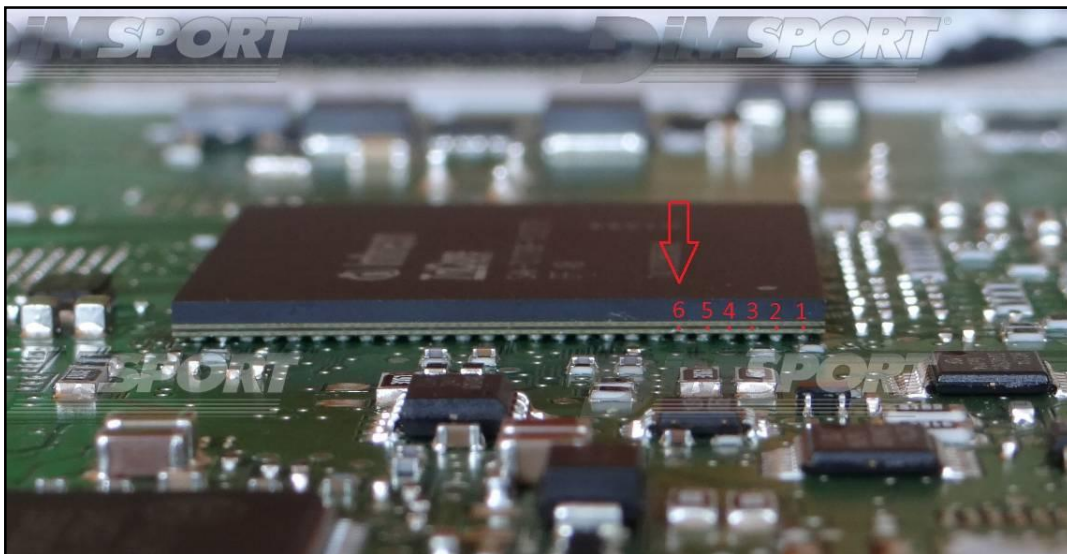


BOSCH EDC17C83 TC1793 IROM ISUZU

Identify the sixth ball of the micro, as shown in the following picture.

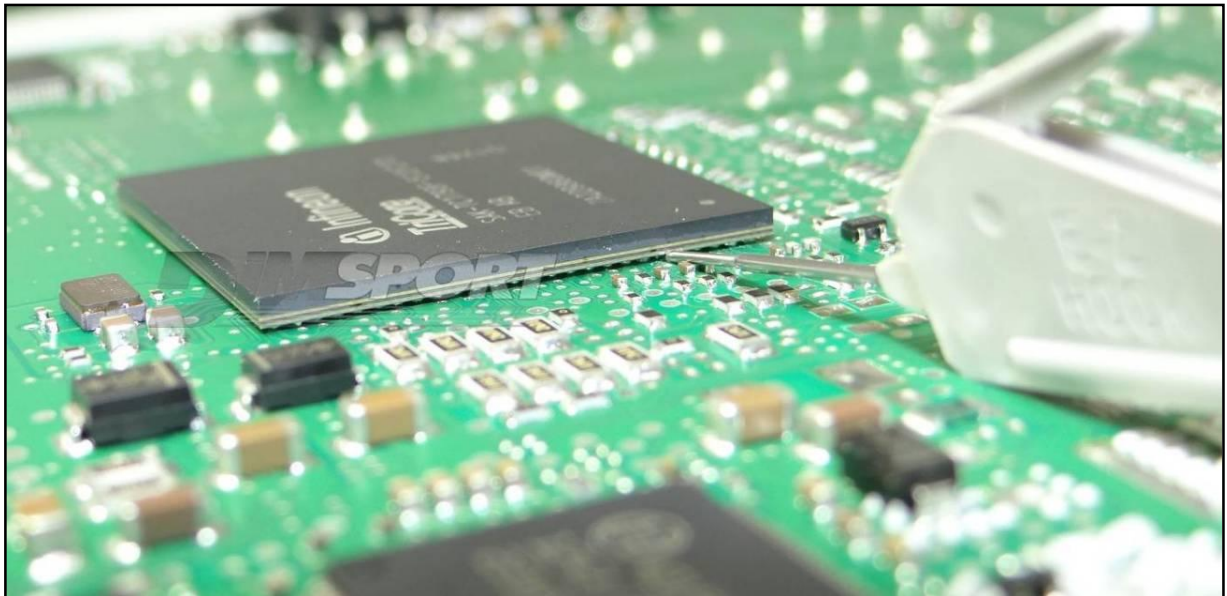


You need to clamp the sixth ball only, please check here below how to identify it.
Connect the clamp to the ball first and ONLY AFTER connect the flat cable to the Trasdata.



BOSCH EDC17C83 TC1793 IROM ISUZU

The following pictures are merely indicative.



BOSCH EDC17C83 TC1793 IROM ISUZU

METAL POSITIONING FRAME CONNECTION

Connect the micro clamp wire directly to the BOOT clamp on the F34DM011 adapter.
Check that the yellow BOOT jumper is set in ON position.
Connect the flat cable to the Trasdta.

The following picture is merely indicative.

