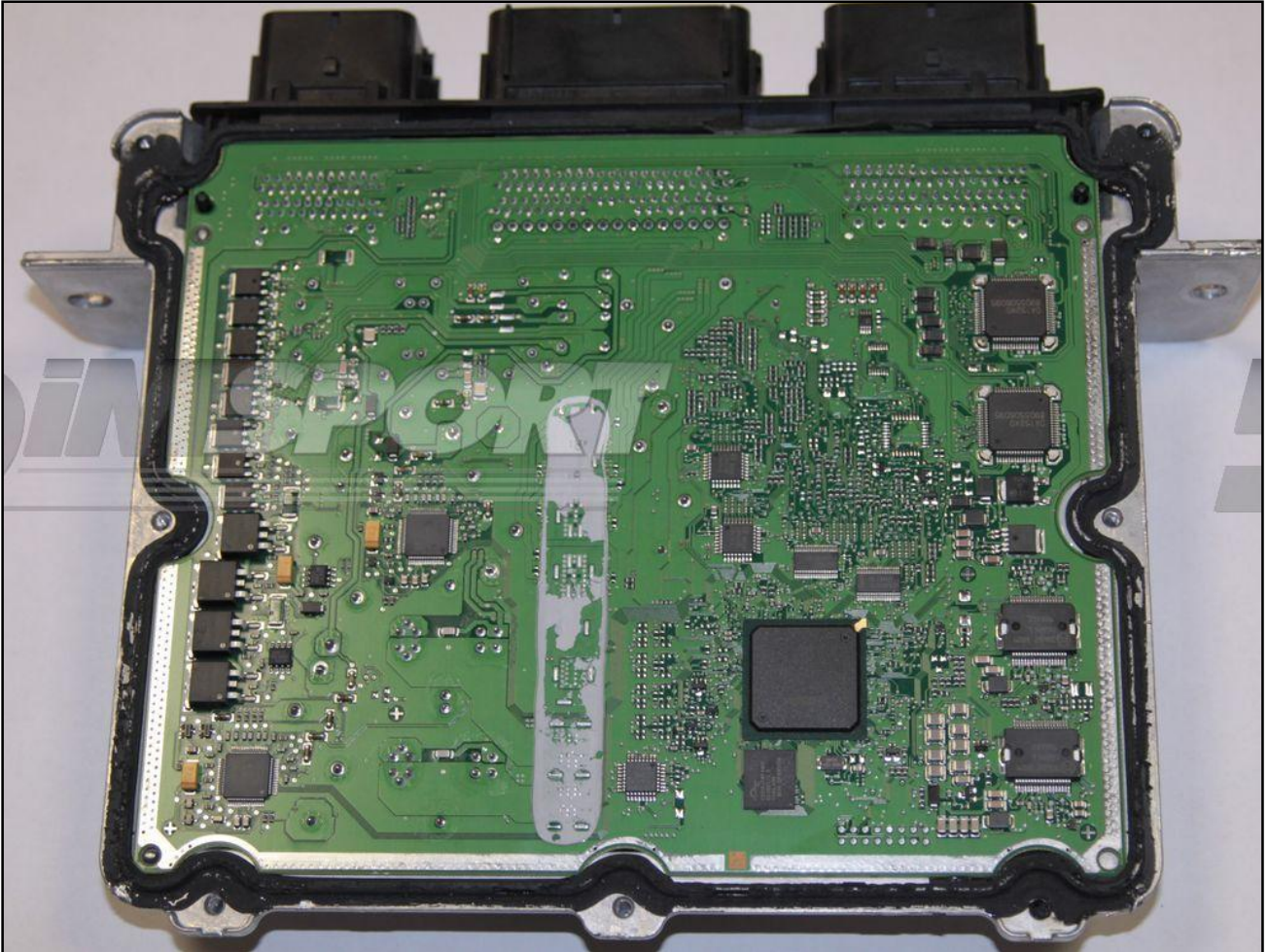


BOSCH EDC17CP05 XROM TC1796 FORD

plugin **197**

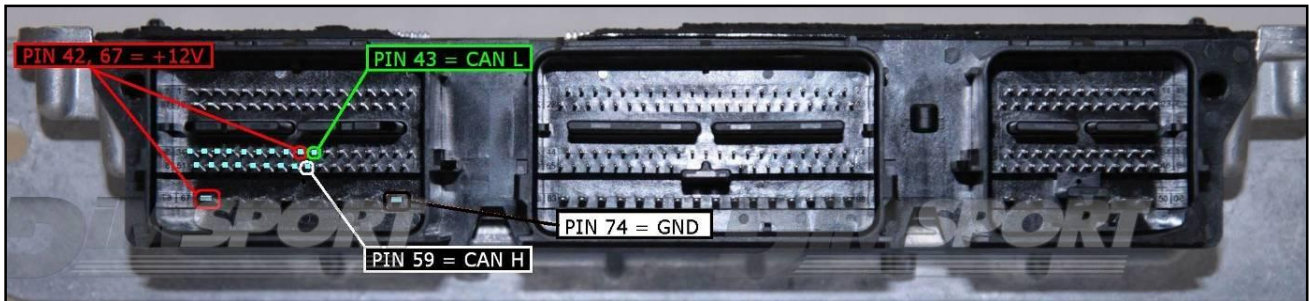
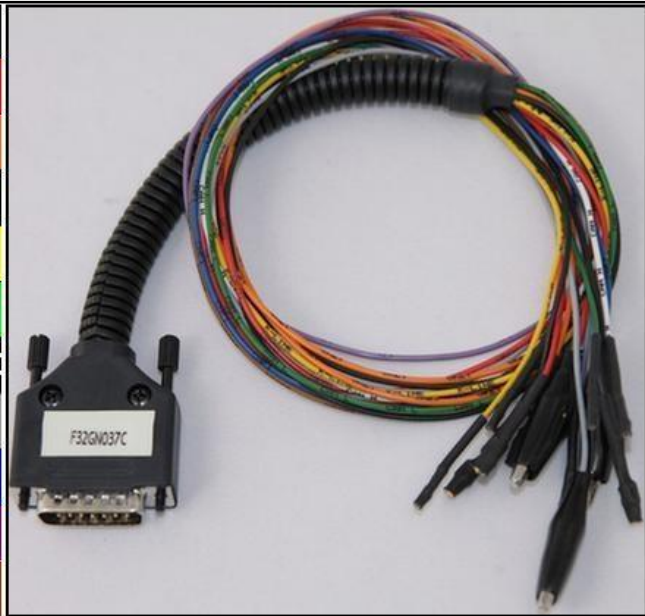


BOSCH EDC17CP05 XROM TC1796 FORD

ECU CONNECTOR

In order to connect to the ECU use the CABLE F32GN037C.
 Make sure that the POWER led (red) on Trasdata is ON.
 Do not use this connection for the DIMA.

| COLORE FILO WIRE COLOUR | DESCRIZIONE DESCRIPTION |
|-----------------------------|--|
| ROSSO RED | POSITIVO DIRETTO POWER BATTERY |
| ARANCIO ORANGE | POSITIVO SOTTO QUADRO POWER SWITCH ON |
| NERO BLACK | MASSA GND |
| GIALLO YELLOW | KLINE |
| VERDE GREEN | CAN LOW |
| BIANCO WHITE | CAN HIGH |
| GRIGIO GREY | POL4 BOOT |
| BLU BLUE | POL5 CNF1 |
| VIOLA/GRIGIO PURPLE/GREY | TENSIONE PROG. PROG. VOLTAGE |
| MARRONE BROWN | RESET |

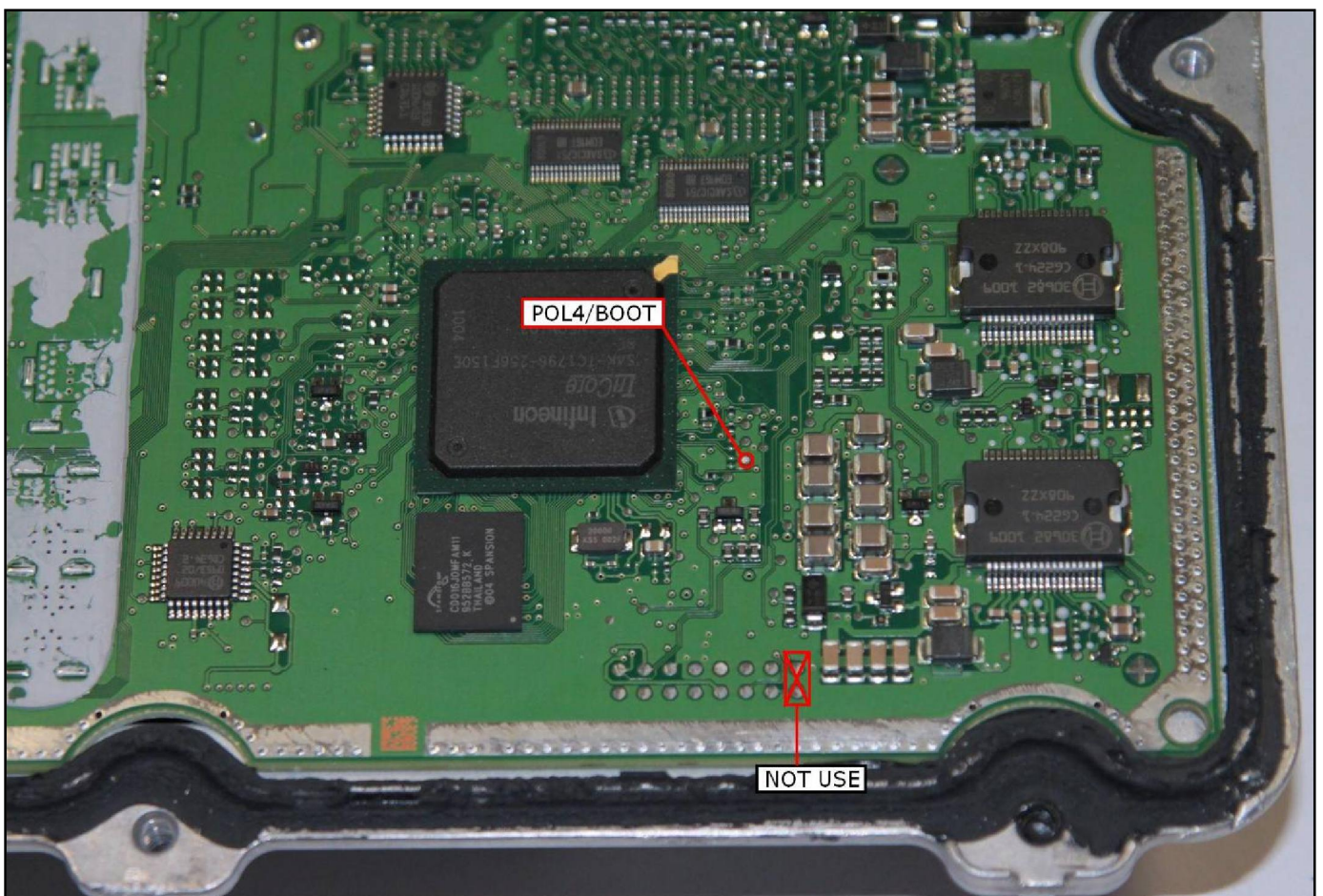


BOSCH EDC17CP05 XROM TC1796 FORD

DIRECT CONNECTION

Connect the GREY wire of the cable F32GN037C as described here below

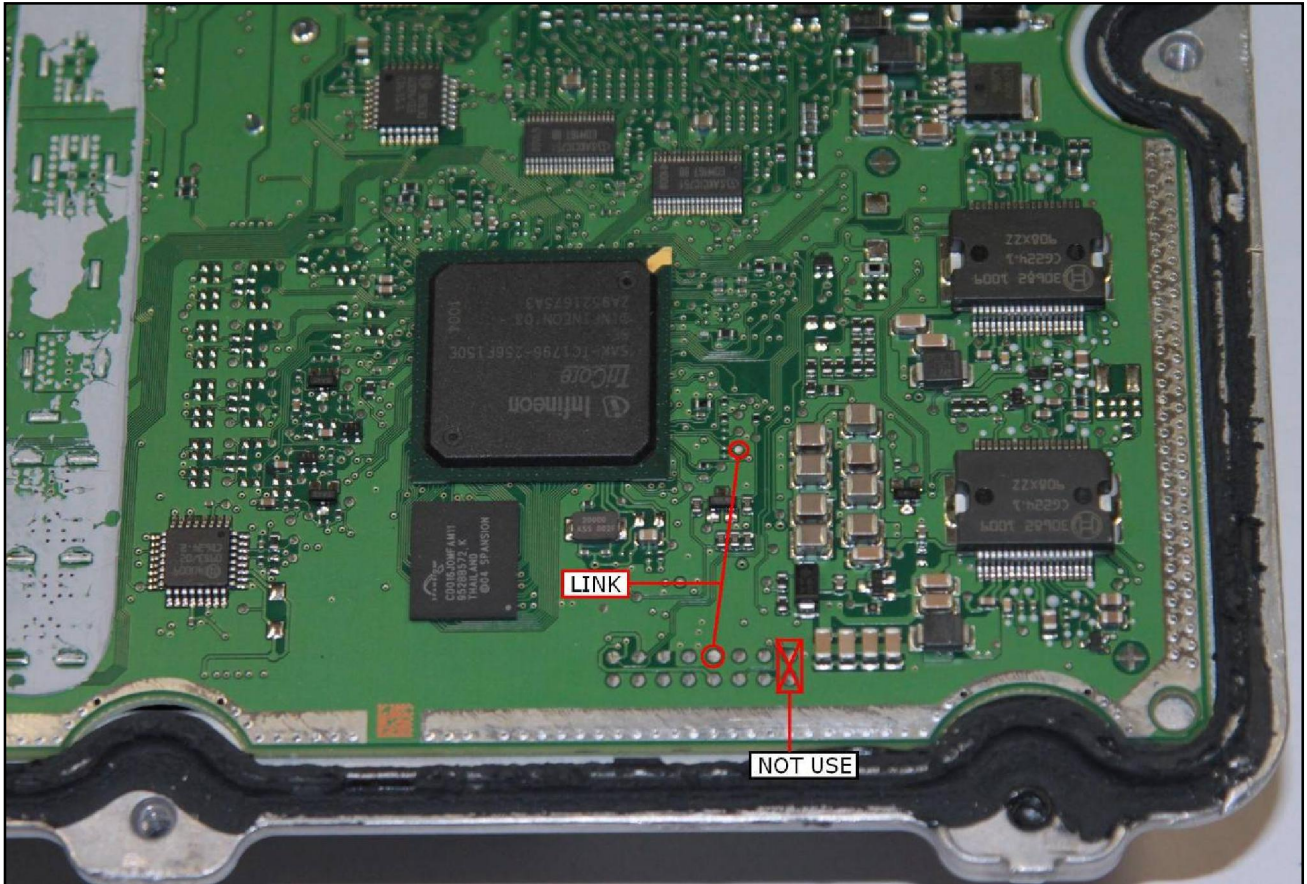
| COLORE FILO WIRE COLOUR | DESCRIZIONE DESCRIPTION |
|----------------------------|----------------------------|
| GRIGIO GREY | POL4 BOOT |



BOSCH EDC17CP05 XROM TC1796 FORD

DIMA CONNECTION

Connect the boot pin to the pad n.10 of the soldering lay-by pins then verify that the switch BOOT present on the F34DM011 is set in position ON.



The following picture of the DIMA adapter F34DM011 connection is merely indicative.

