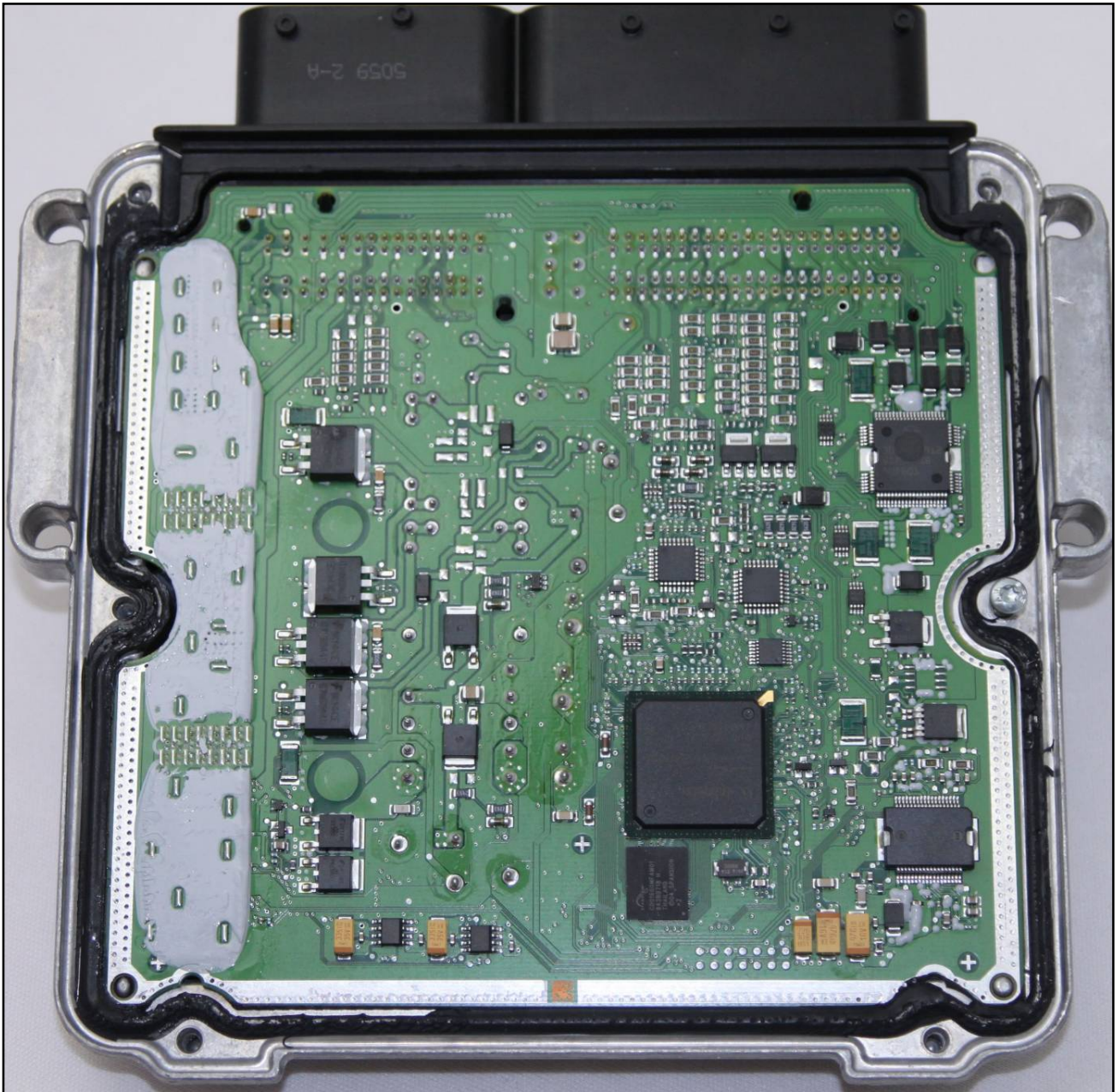


BOSCH EDC17CP15 XROM TC1796 MITSUBISHI

plugin 170



BOSCH EDC17CP15 XROM TC1796 MITSUBISHI

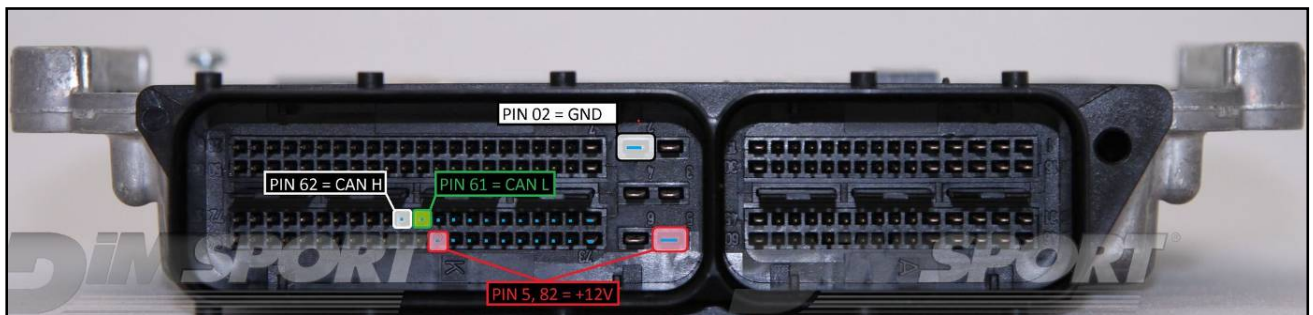
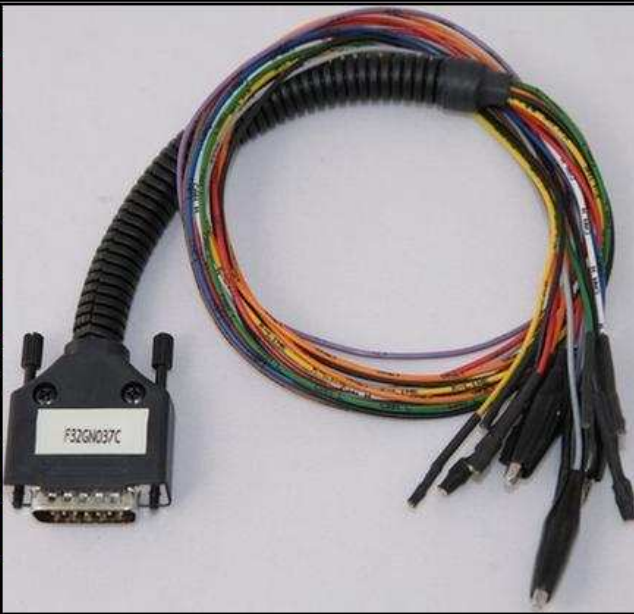
DIRECT CONNECTION

In order to connect to the ECU use the CABLE F32GN037C.

Do not use this connection for the DIMA.

Make sure that the POWER led (red) on Trasdata is ON.

COLORE FILO WIRE COLOUR	DESCRIZIONE DESCRIPTION
ROSSO RED	POSITIVO DIRETTO POWER BATTERY
ARANCIO ORANGE	POSITIVO SOTTO QUADRO POWER SWITCH ON
NERO BLACK	MASSA GND
GIALLO YELLOW	KLINE
VERDE GREEN	CAN LOW
BIANCO WHITE	CAN HIGH
GRIGIO GREY	POL4 BOOT
BLU BLUE	POL5 CNF1
VIOLA/GRIGIO PURPLE/GREY	TENSIONE PROG. PROG. VOLTAGE
MARRONE BROWN	RESET

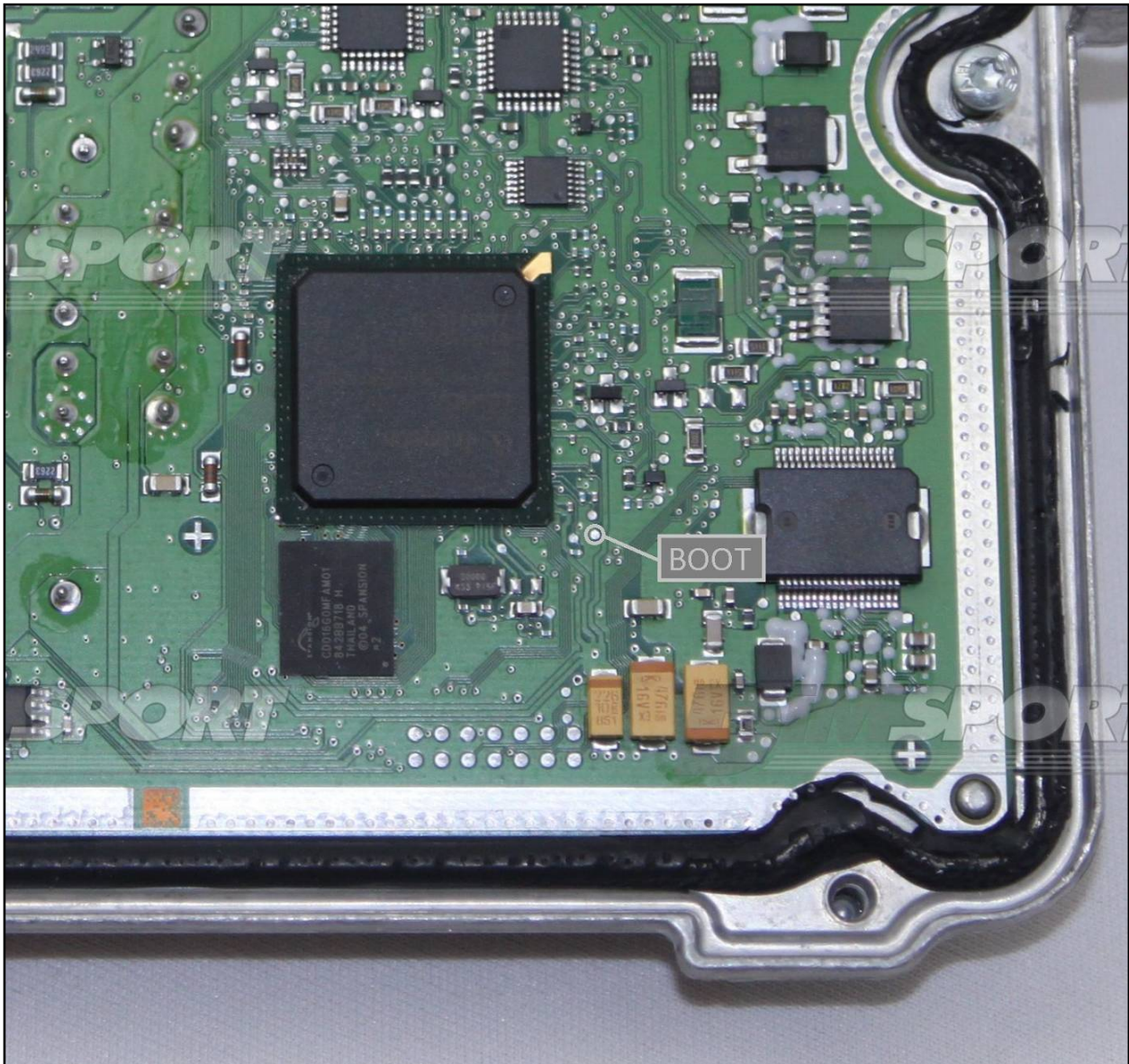


BOSCH EDC17CP15 XROM TC1796 MITSUBISHI

BOOT/POL4 CONNECTION

Connect the GREY wire of the cable F32GN037C as described here below :

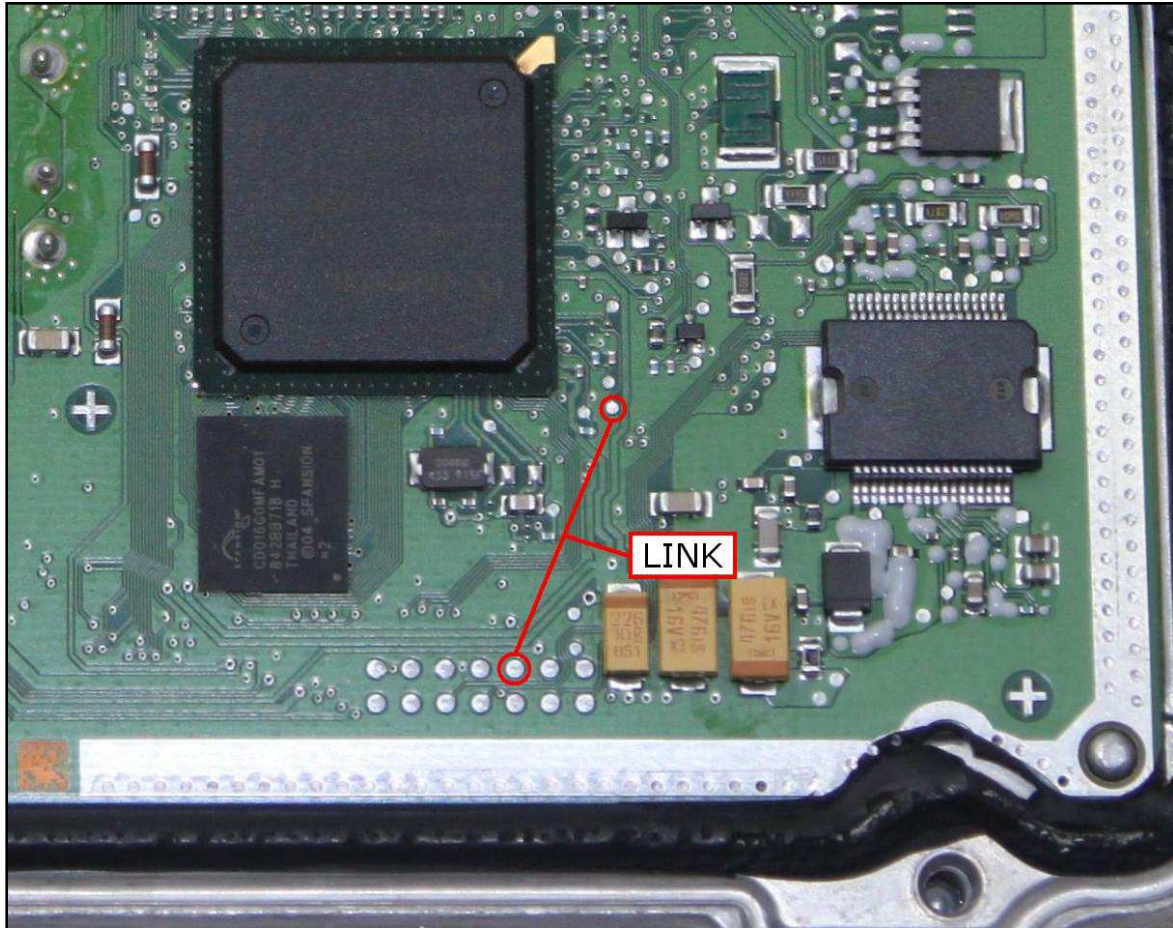
COLORE FILO WIRE COLOUR	DESCRIZIONE DESCRIPTION
GRIGIO GREY	POL4 BOOT



BOSCH EDC17CP15 XROM TC1796 MITSUBISHI

DIMA CONNECTION

Connect the boot pin to the pad n.10 of the soldering lay-by pins then verify that the switch BOOT present on the F34DM011 is set in position ON.



A different solution is to connect the BOOT wire directly to the orange BOOT clamp on the DIMA adapter F34DM011. Check that the yellow BOOT jumper is set in ON position. Connect the DIMA flat cable to the Trasdata.

The following picture of the DIMA adapter F34DM011 connection is merely indicative.

