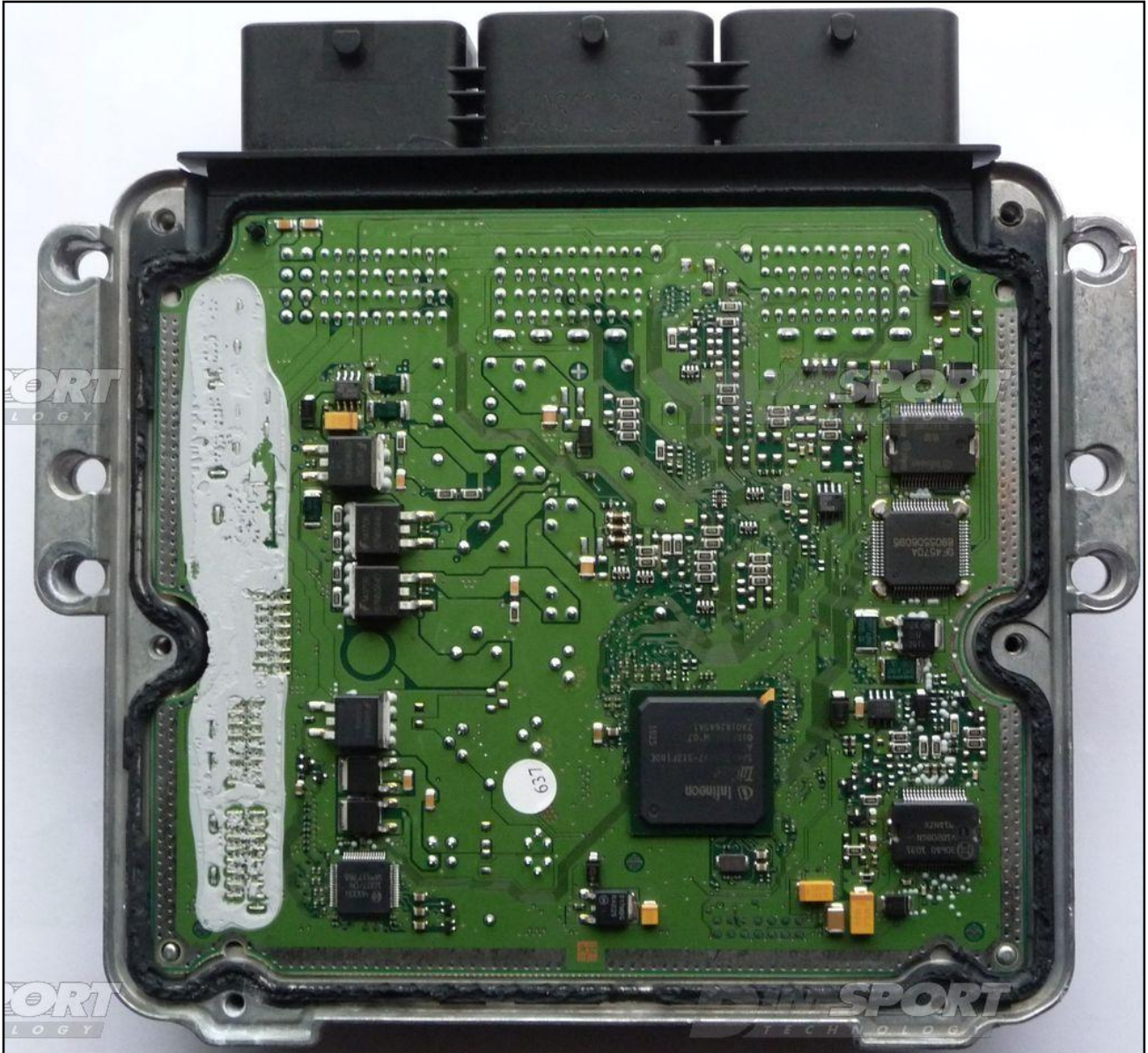


BOSCH EDC17CP42 IROM TC1797 LANDROVER

plugin **235-301-312**



## BOSCH EDC17CP42 IROM TC1797 LANDROVER

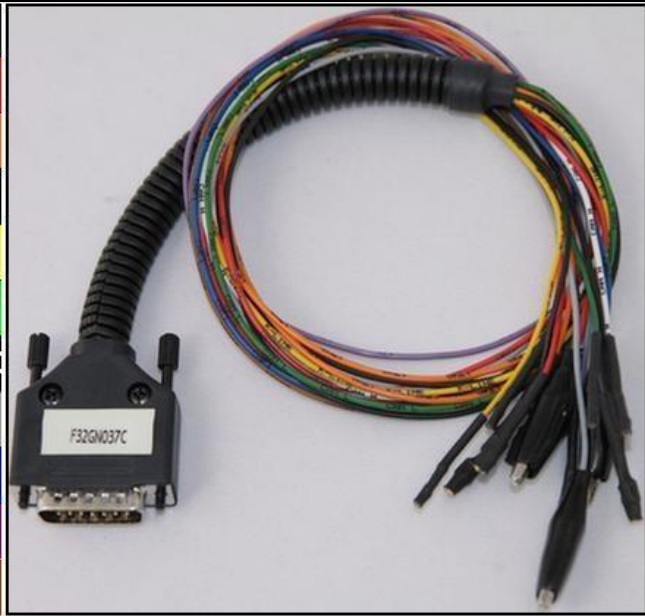
### ECU CONNECTOR

In order to connect to the ECU use the CABLE F32GN037C.

Make sure that the POWER led (red) on Trasdata is ON.

For the DIMA do NOT use this connection.

COLORE FILO WIRE COLOUR	DESCRIZIONE DESCRIPTION
ROSSO RED	POSITIVO DIRETTO POWER BATTERY
ARANCIO ORANGE	POSITIVO SOTTO QUADRO POWER SWITCH ON
NERO BLACK	MASSA GND
GIALLO YELLOW	KLINE
VERDE GREEN	CAN LOW
BIANCO WHITE	CAN HIGH
GRIGIO GREY	POL4 BOOT
BLU BLUE	POL5 CNF1
VIOLA/GRIGIO PURPLE/GREY	TENSIONE PROG. PROG. VOLTAGE
MARRONE BROWN	RESET

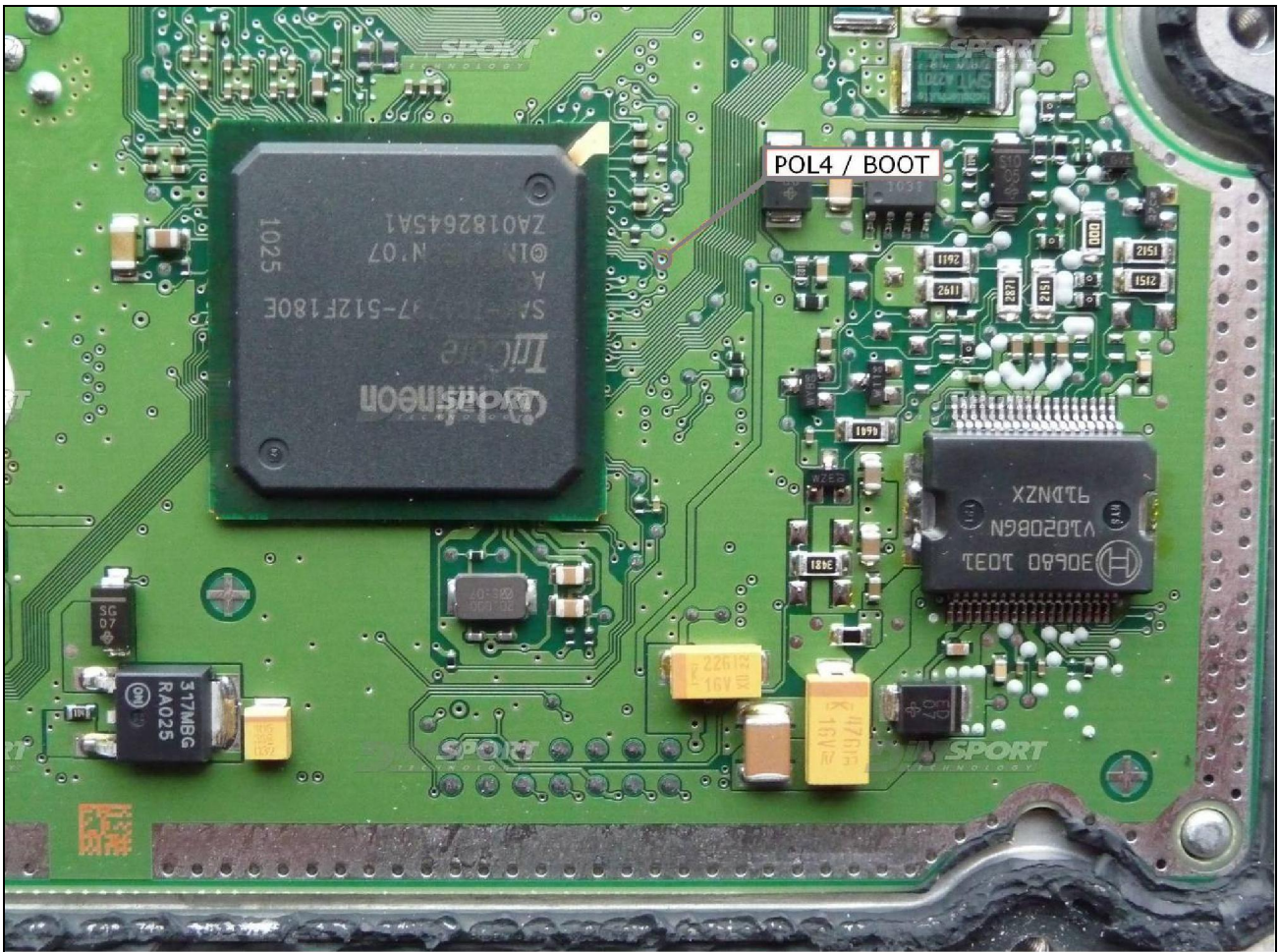


BOSCH EDC17CP42 IROM TC1797 LANDROVER

**DIRECT BOOT CONNECTION**

Connect the GREY wire of the cable F32GN037C as shown in the picture.

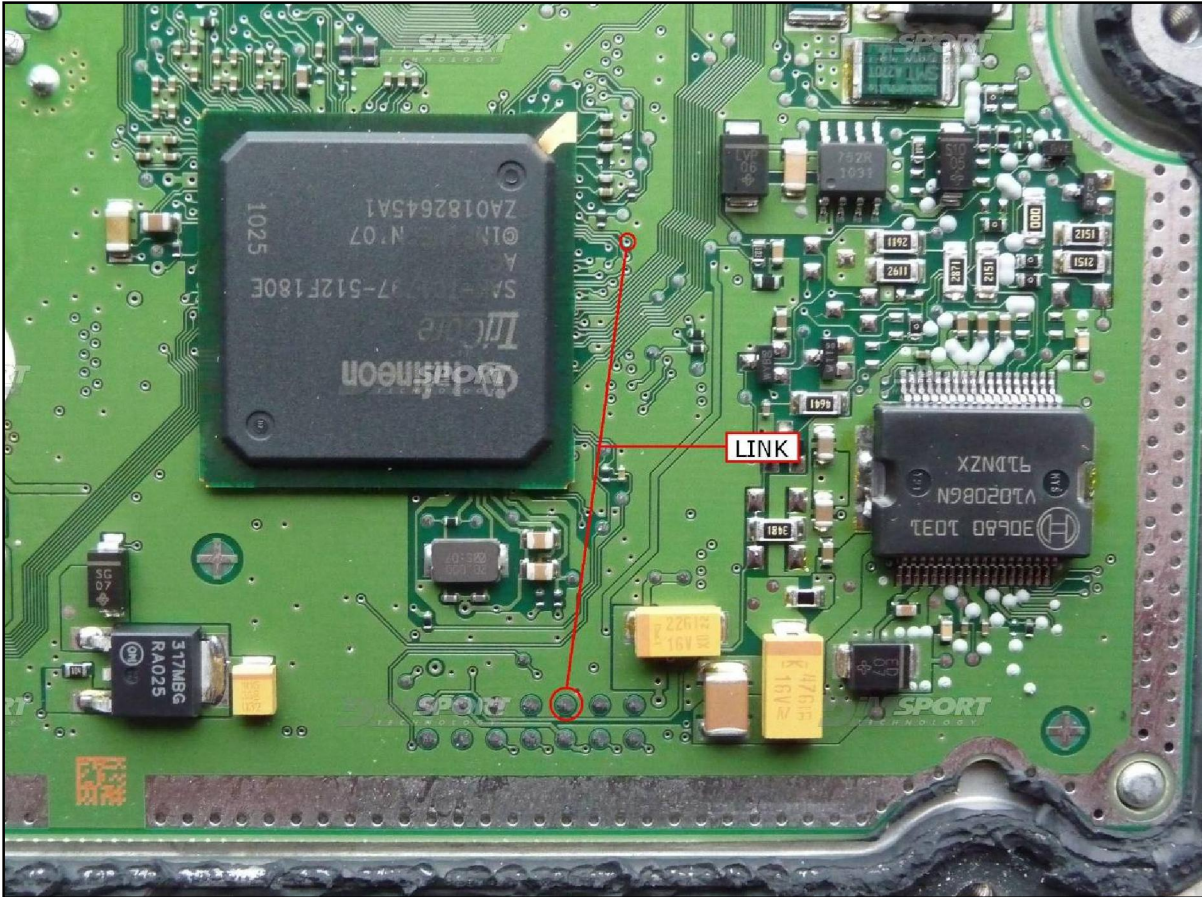
COLORE FILO WIRE COLOUR	DESCRIZIONE DESCRIPTION
GRIGIO GREY	POL4 BOOT



BOSCH EDC17CP42 IROM TC1797 LANDROVER

**DIMA CONNECTION**

Connect the boot pin to the pad n.10 of the soldering lay-by pins then verify that the switch BOOT present on the F34DM011 is set in position ON.



The following picture of the DIMA adapter F34DM011 connection is merely indicative.

