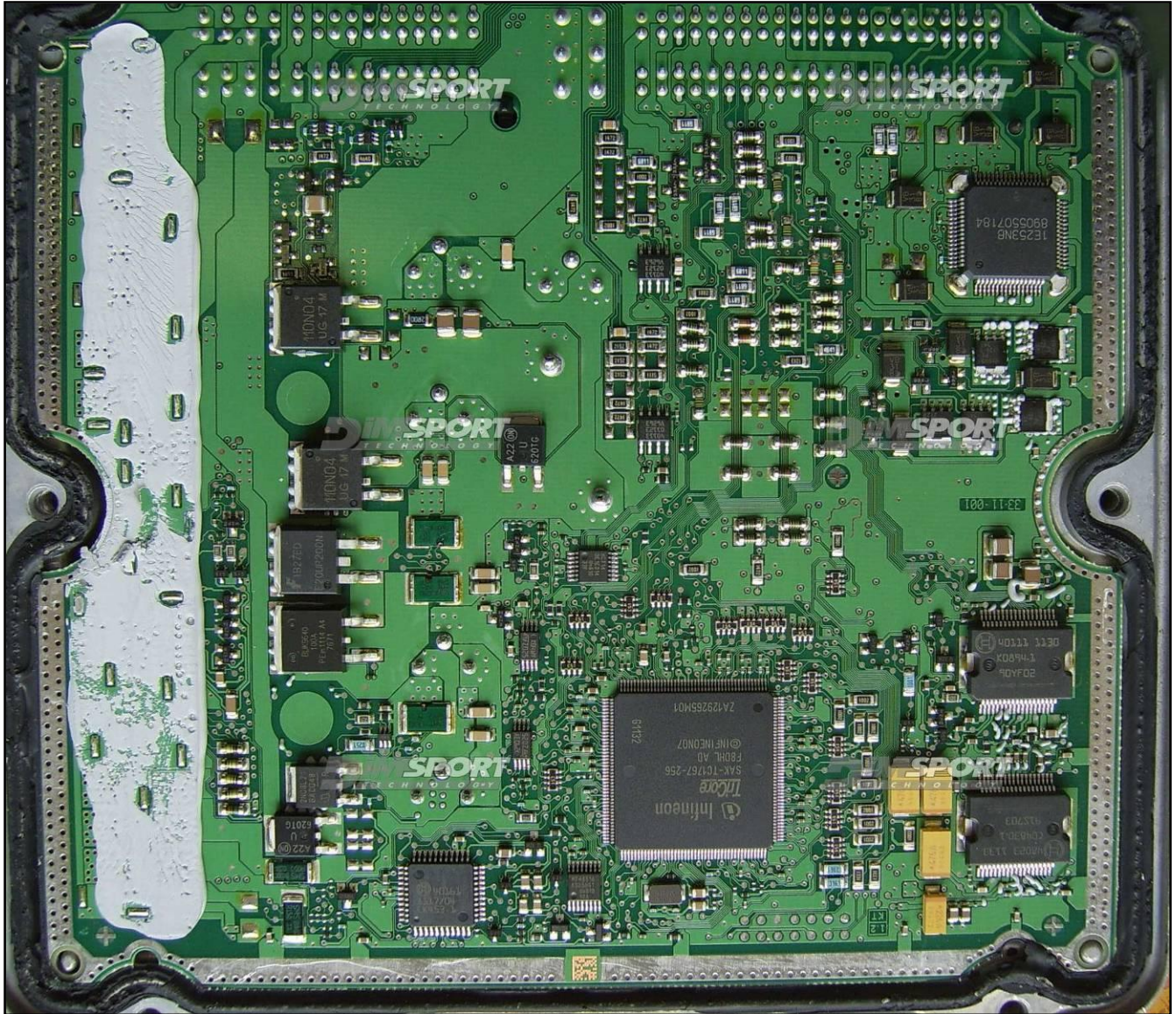


BOSCH EDC17CV54-56 IROM TC1767 JCB

plugin

- 402 EDC17CV54 JCB-MF-NH-Valtra-Belarus**
- 436 EDC17CV56 Deutz-Fendt**
- 572 EDC17CV54 Deutz-Fendt**
- 738 EDC17CV44 Dongfeng/Sinotruk/Weichai**
- 943 EDC17CV54 Mitsubishi Fuso**



BOSCH EDC17CV54-56 IROM TC1767 JCB

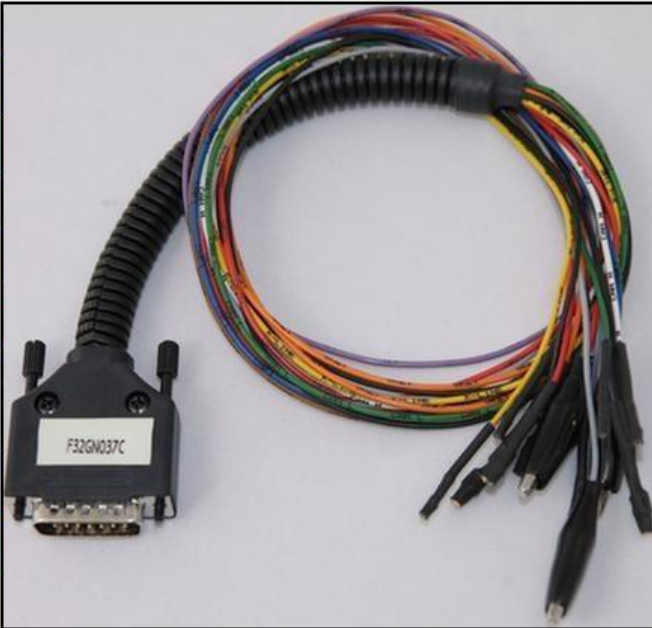
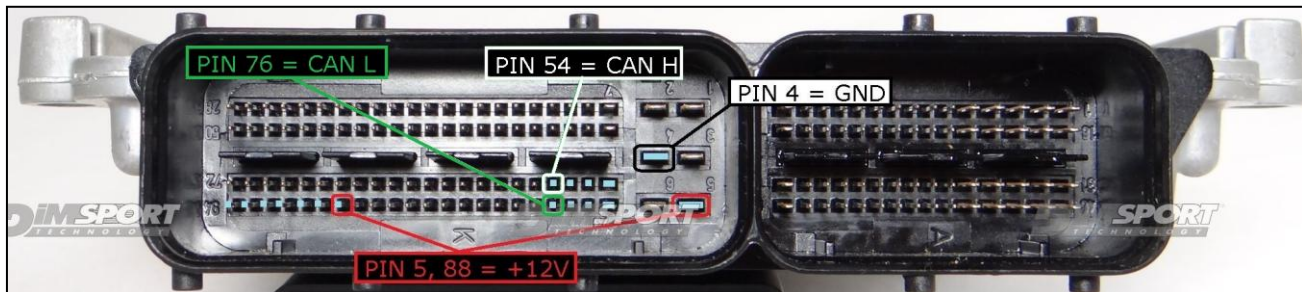
ECU CONNECTOR

In order to connect to the ECU use the cable F32GN037C/D.

Make sure that the POWER led (red) on Trasdata is ON.

Do not use this connection with the metal positioning frame kit, it will be the F34DM011 adapter to power the ECU.

COLORE FILO WIRE COLOUR	DESCRIZIONE DESCRIPTION
■ ROSSO RED	POSITIVO DIRETTO POWER BATTERY
■ ARANCIO ORANGE	POSITIVO SOTTO QUADRO POWER SWITCH ON
■ NERO BLACK	MASSA GND
■ GIALLO YELLOW	KLINE
■ VERDE GREEN	CAN LOW
■ BIANCO WHITE	CAN HIGH
■ GRIGIO GREY	POL4 BOOT
■ BLU BLUE	POL5 CNF1
■ VIOLA/GRIGIO PURPLE/GREY	TENSIONE PROG. PROG. VOLTAGE
■ MARRONE BROWN	RESET

WARNING: due to the relevant power absorbed by the ECU at the beginning of the communication it is necessary to feed the ECU with an external power supply or a car battery. Connect the power cable F32GN003 to the Trasdata and then to the power source.

The ECU must be powered through the Trasdata using the F32GN037C/D cable.

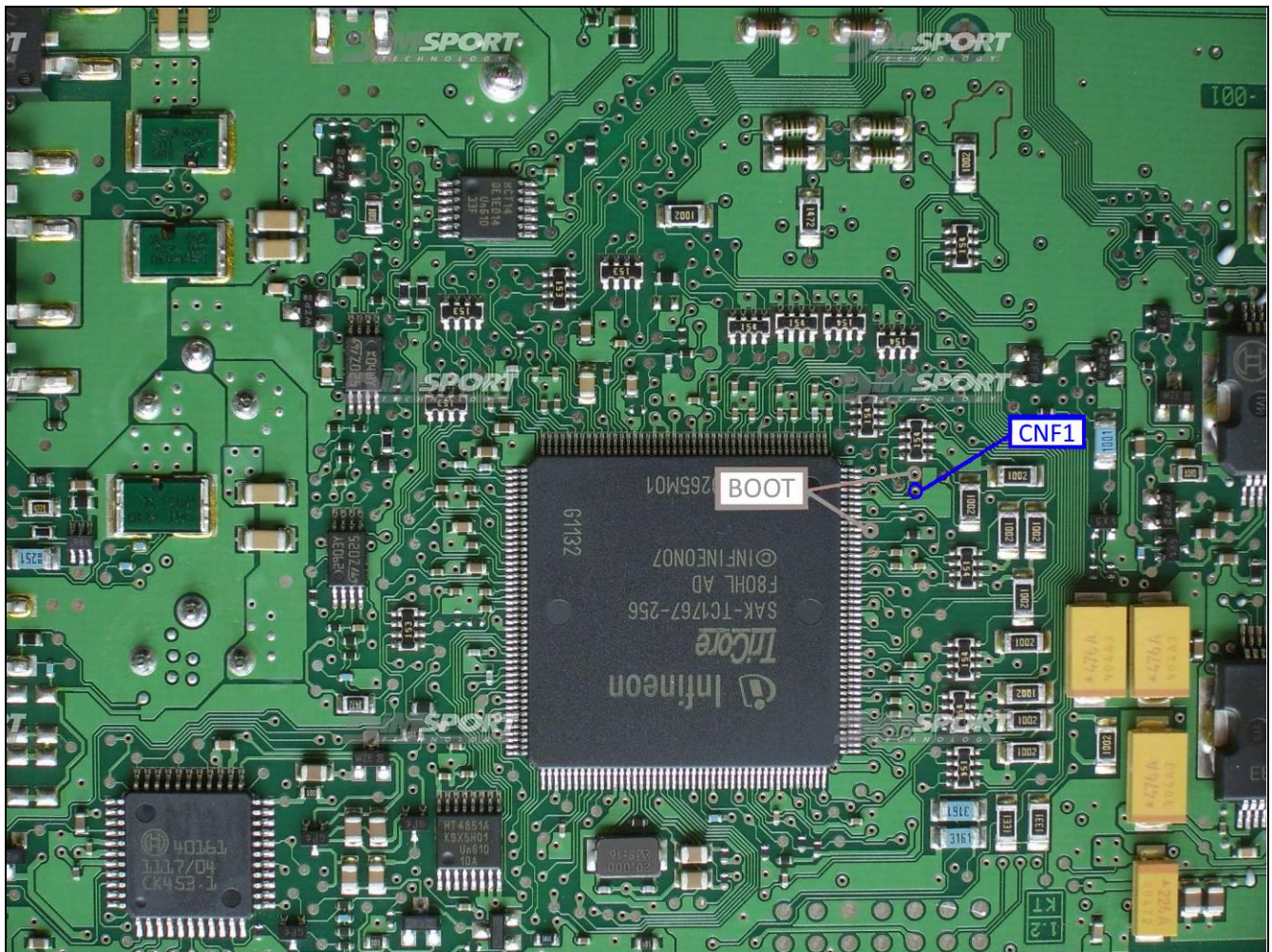


BOSCH EDC17CV54-56 IROM TC1767 JCB

BOOT & CNF1 CONNECTION

Connect the BLUE and GREY wires of the cable F32GN037C/D as shown here below:

COLORE FILO WIRE COLOUR	DESCRIZIONE DESCRIPTION
GRIGIO GREY	POL4 BOOT
BLU BLUE	POL5 CNF1



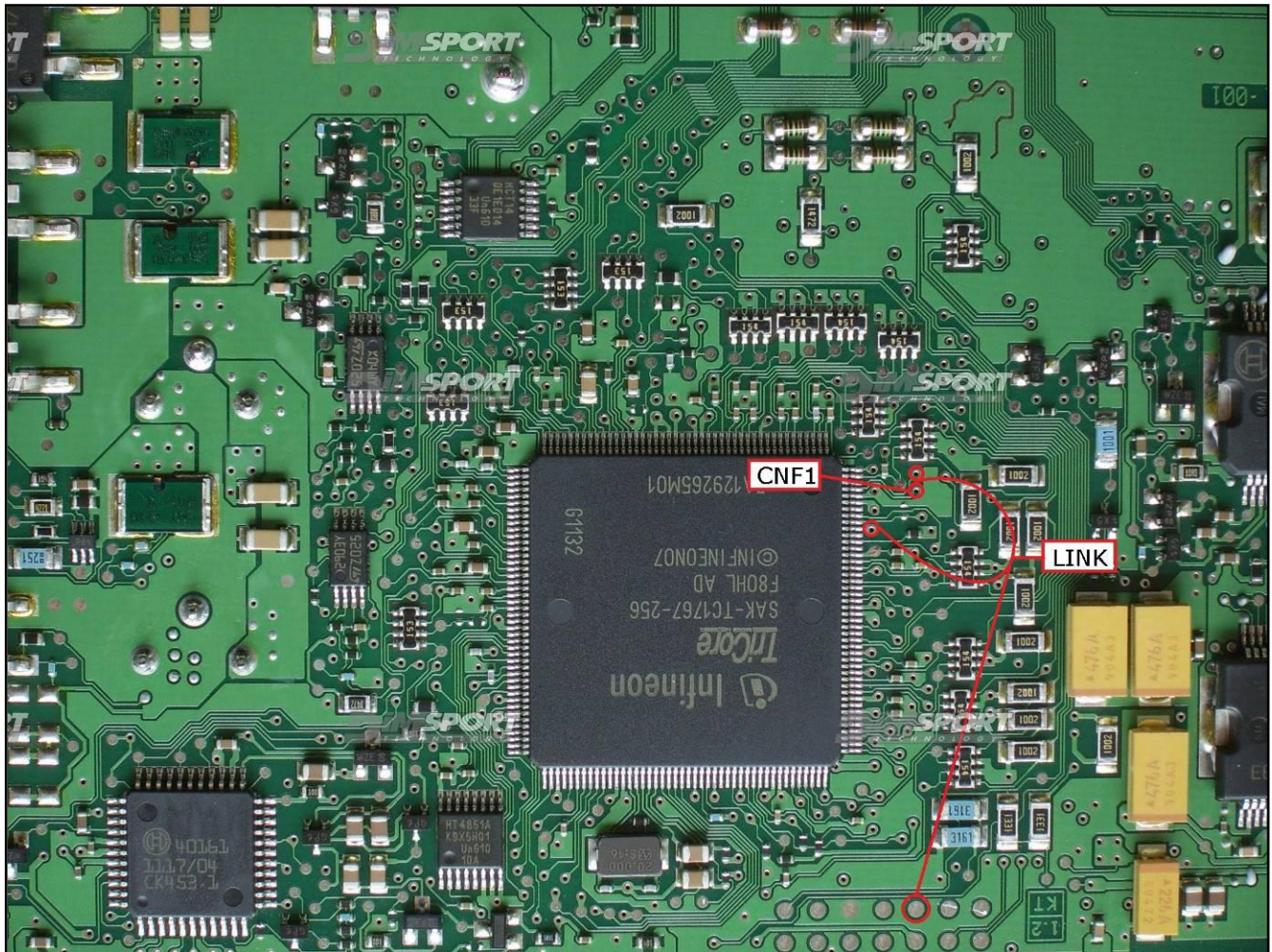
BOSCH EDC17CV54-56 IROM TC1767 JCB

METAL POSITIONING FRAME CONNECTION

For the metal positioning frame connection is required the F34DM011 DIMA adapter.

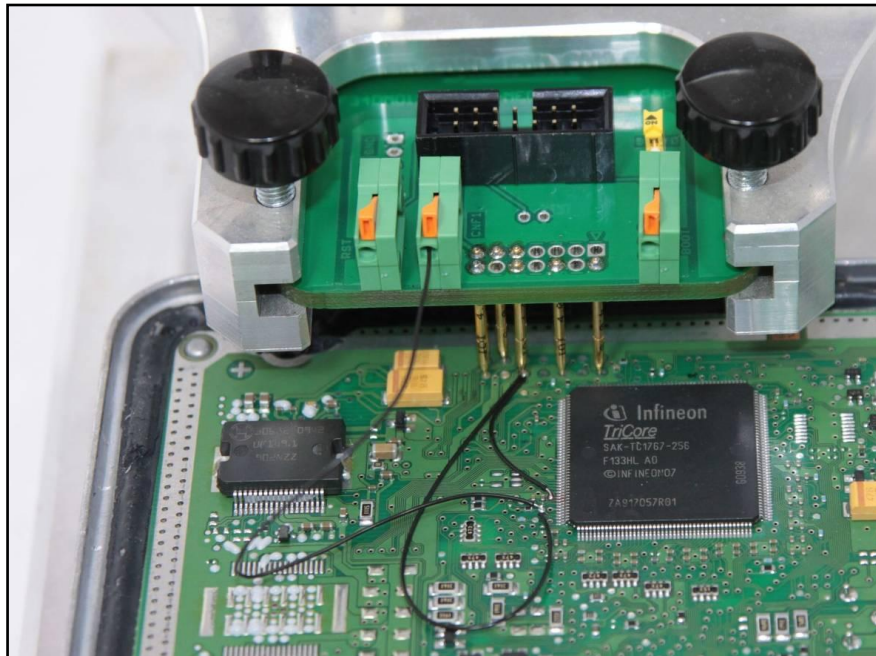
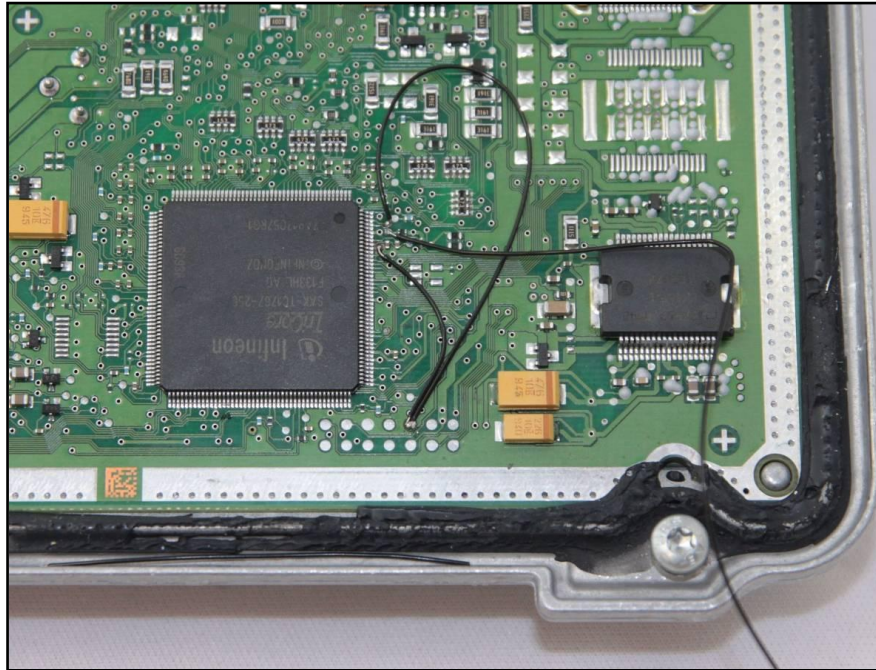
Connect the BOOT pins to the pad n.10 of the soldering lay-by pins then verify that the switch BOOT present on the F34DM011 is set in position ON.

The third pad CNF1 must be connected with a wire to the CNF1 clamp on the F34DM011 adapter, then connect the flat cable to the Trasdata.



BOSCH EDC17CV54-56 IROM TC1767 JCB

The following pictures are merely indicative.



A different solution is to connect the BOOT wire directly to the orange BOOT clamp on the F34DM011 adapter. Check that the yellow BOOT jumper is set in ON position. Connect then the flat cable to the Trasdata.