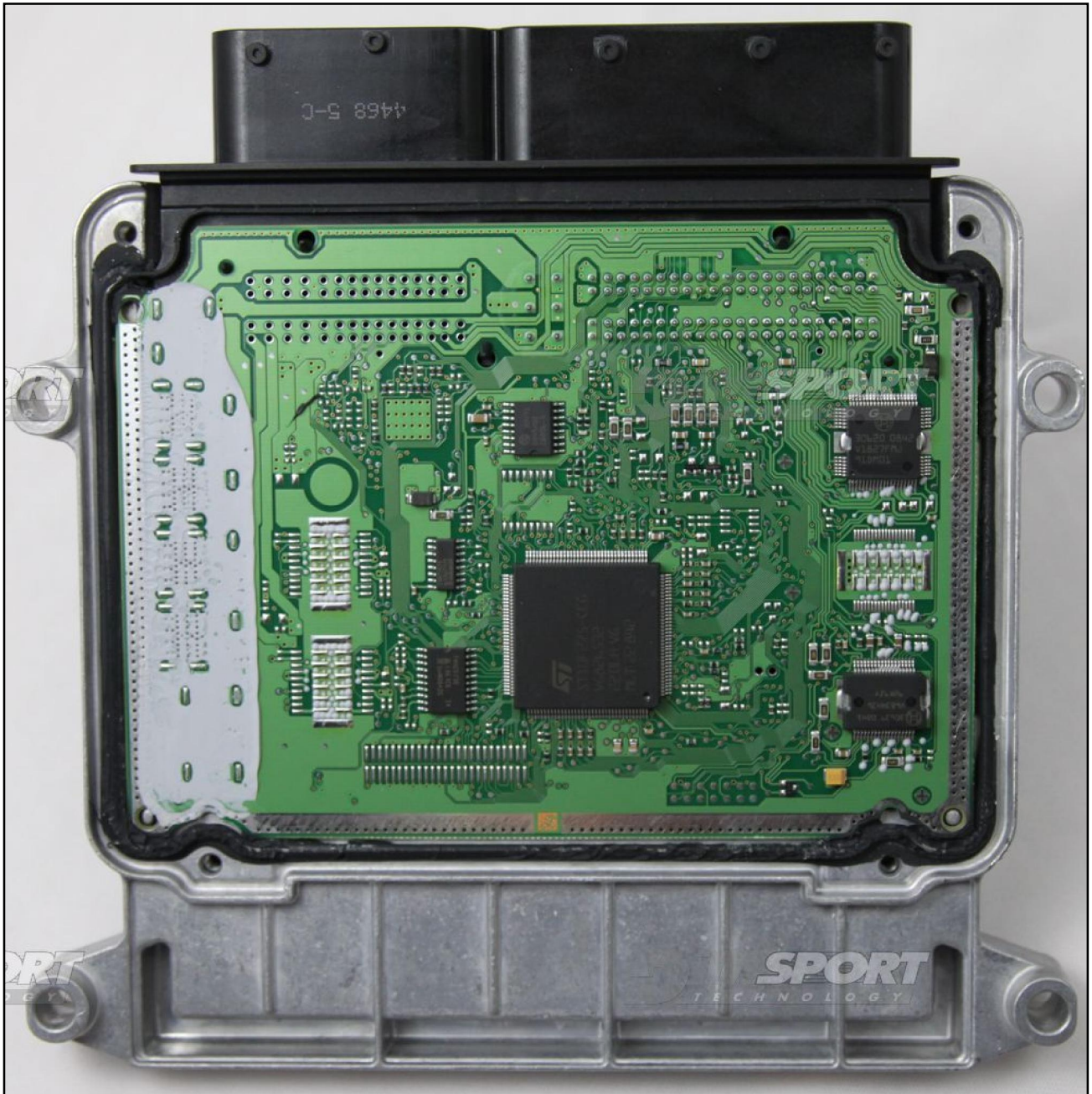


BOSCH M798 KIA

plugin **167**

The lay-by pin is placed in the lower part of the ECU.



BOSCH M798 KIA

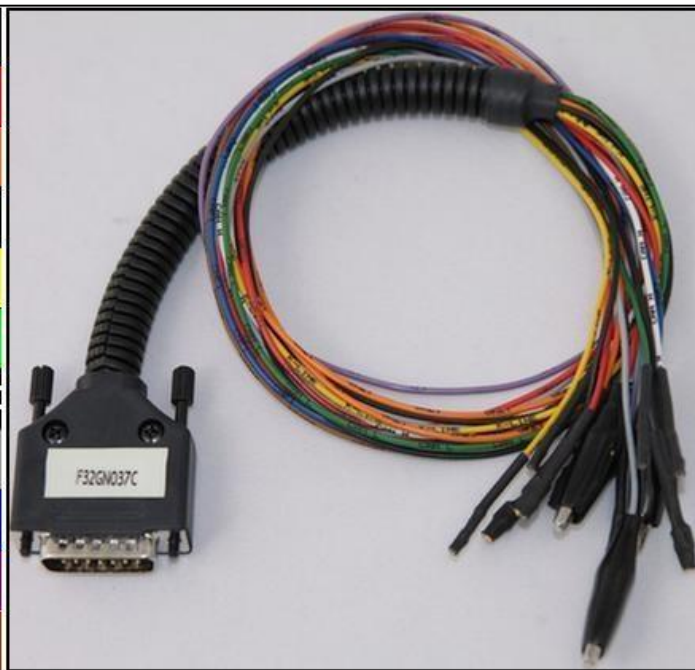
DIRECT CONNECTION

In order to connect to the ECU use the cable F32GN037C.

Make sure that the POWER led (red) on Trasdata is ON.

Do not use this connection with the metal positioning frame kit, it will be the F34DM011 adapter to power the ECU.

COLORE FILO WIRE COLOUR	DESCRIZIONE DESCRIPTION
ROSSO RED	POSITIVO DIRETTO POWER BATTERY
ARANCIO ORANGE	POSITIVO SOTTO QUADRO POWER SWITCH ON
NERO BLACK	MASSA GND
GIALLO YELLOW	KLINE
VERDE GREEN	CAN LOW
BIANCO WHITE	CAN HIGH
GRIGIO GREY	POL4 BOOT
BLU BLUE	POL5 CNF1
VIOLA/GRIGIO PURPLE/GREY	TENSIONE PROG. PROG. VOLTAGE
MARRONE BROWN	RESET



ECU CONNECTOR

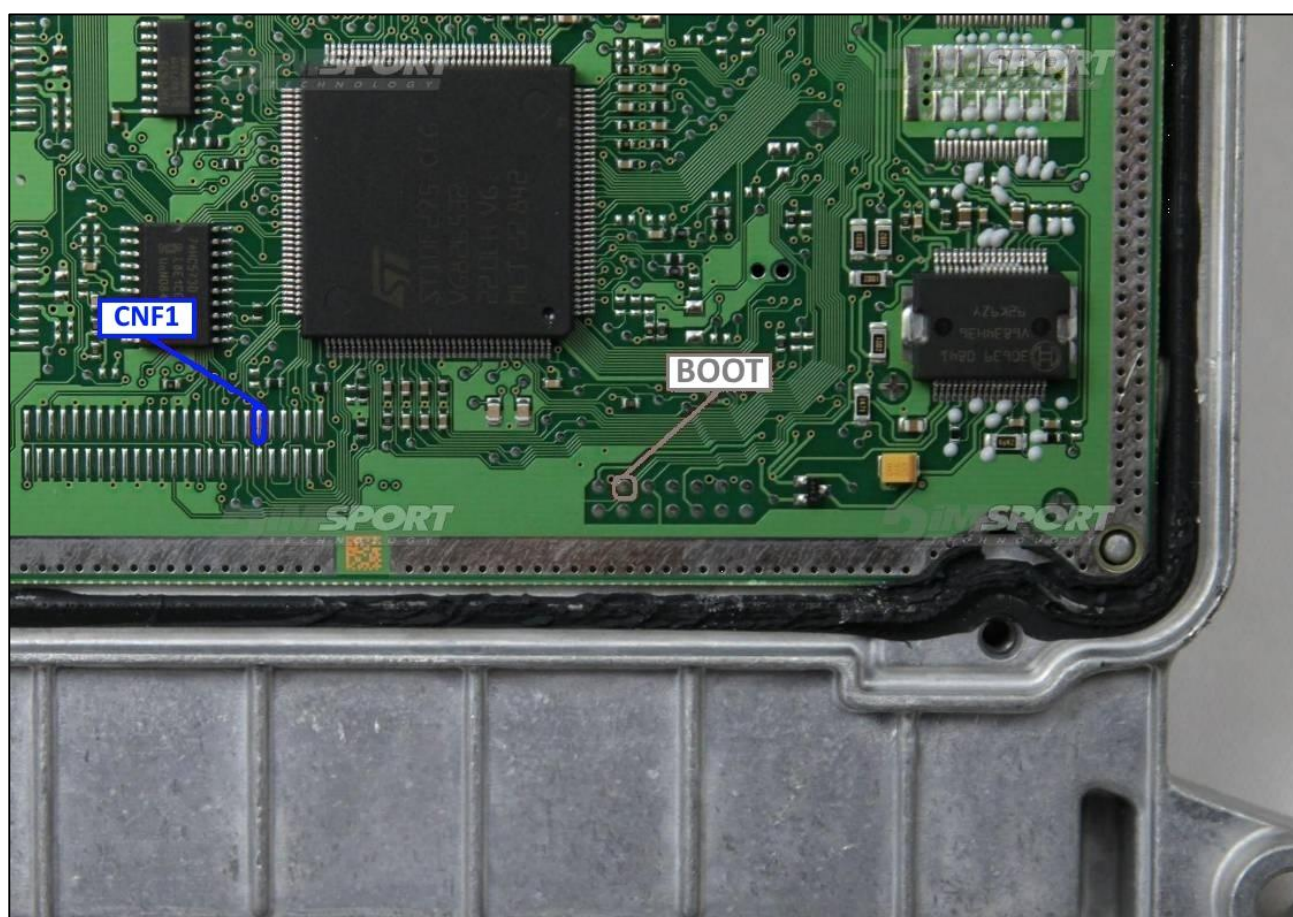


BOSCH M798 KIA

BOOT&CNF1 CONNECTION

Connect the BLUE and GREY wires of the cable F32GN037C as described here below :

COLORE FILO WIRE COLOUR	DESCRIZIONE DESCRIPTION
GRIGIO GREY	POL4 BOOT
BLU BLUE	POL5 CNF1



BOSCH M798 KIA

METAL POSITIONING FRAME CONNECTION

For the metal positioning frame connection is required the F34DM010 adapter.

The single blue wire supplied with the adapter F34DM010 must be soldered on the CNF1 pad and connected on the adapter F34DM010 as shown in the following picture.

