

BOSCH ME17.9.20 IROM TC1782 GPT RENAULT

plugin 709 BOSCH ME17.9.20 IROM TC1782 GPT RENAULT for **RENAULT** & **SMART** vehicles

GPT CONNECTION MODE

To perform the GPT connection it is necessary to use both the ANALOG PORT and the DIGITAL PORT

GPT connection with loose wires

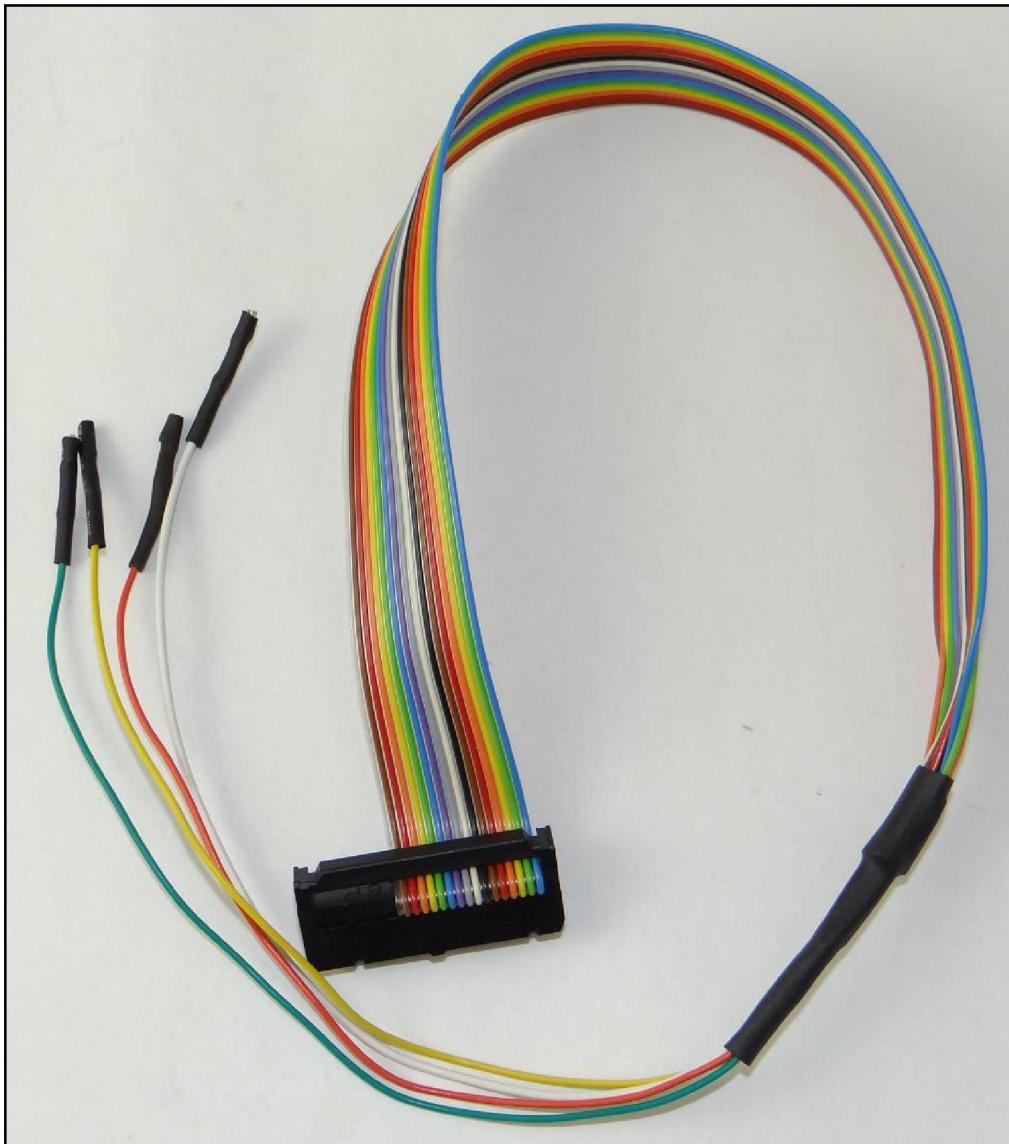
Connect the F32GN037 cable to the **ANALOG PORT**

Connect the F34NTA15 to the **DIGITAL PORT**, use the YELLOW and ORANGE wires ONLY for the GPT signals as displayed in the following pictures.

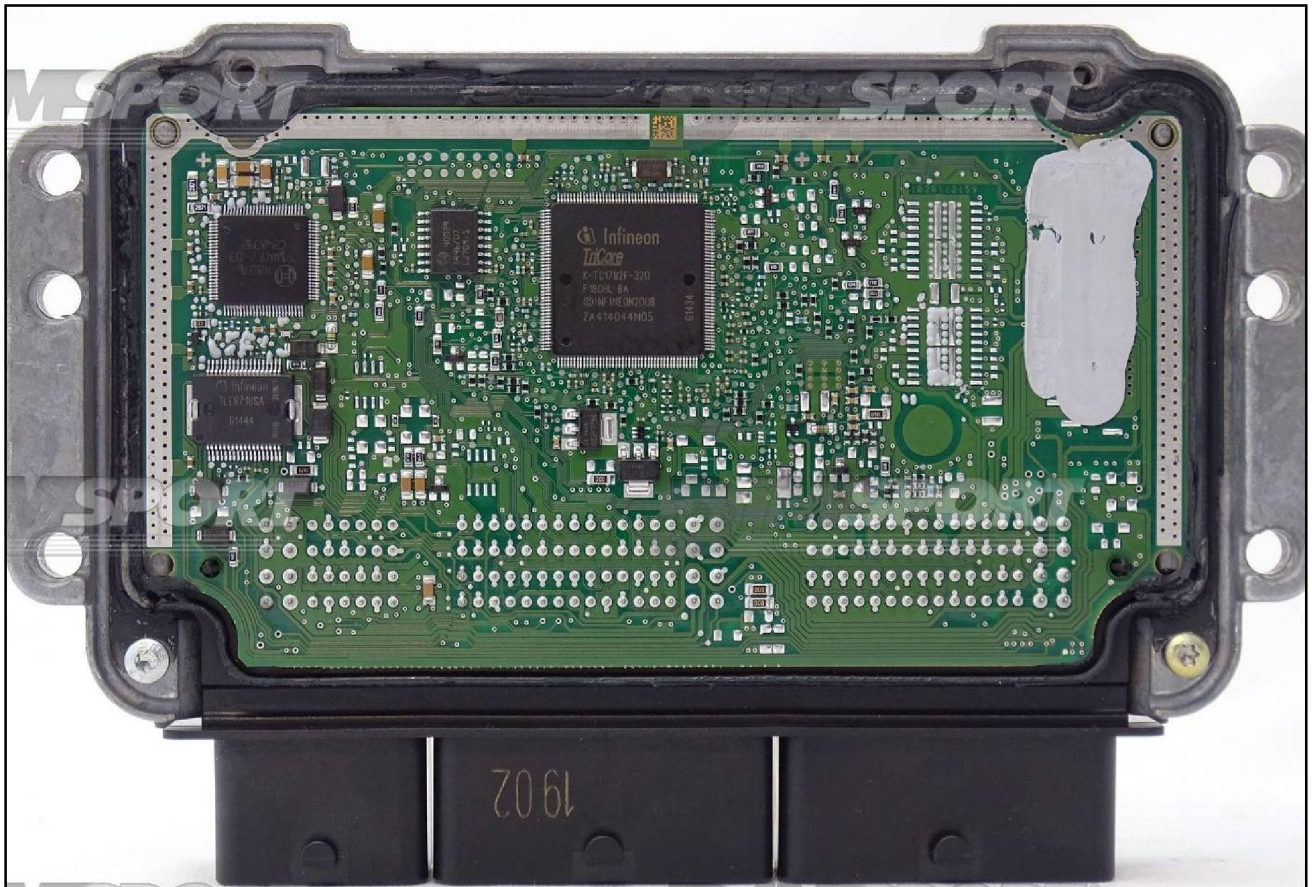
GPT connection with DIMA

Connect the F32GN038 cable to the **ANALOG PORT**

Connect the F34NTA15 to the **DIGITAL PORT**, use the YELLOW and ORANGE wires ONLY for the GPT signals as displayed in the following pictures.



BOSCH ME17.9.20 IROM TC1782 GPT RENAULT



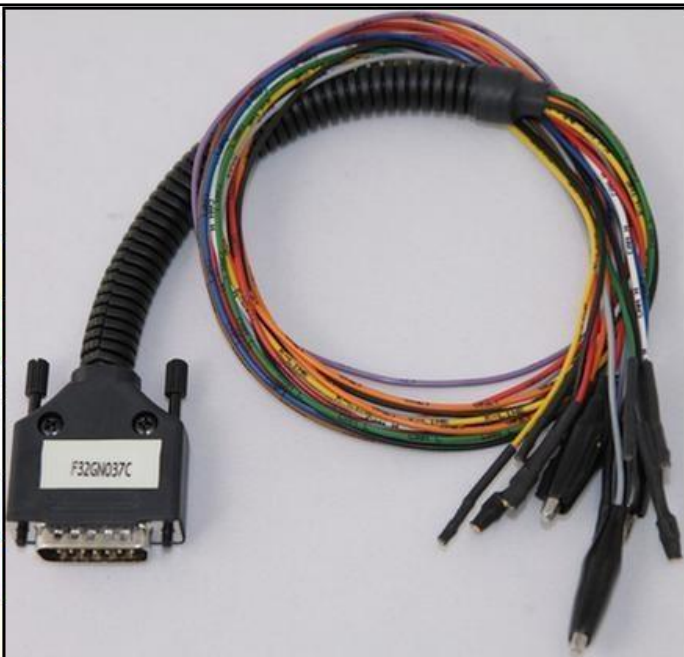
BOSCH ME17.9.20 IROM TC1782 GPT RENAULT

ECU CONNECTOR

For the connection with LOOSE WIRES use the cable F32GN037C connected to the ECU. Make sure that the POWER led (red) on Trasdata is ON.

Do not use this connection with the metal positioning frame kit, it will be the F34DM011 adapter to power the ECU.

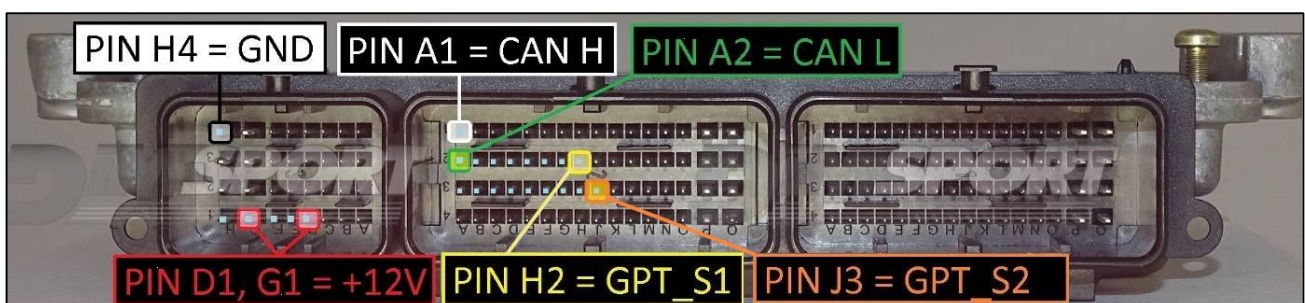
COLORE FILO WIRE COLOUR	DESCRIZIONE DESCRIPTION
ROSSO RED	POSITIVO DIRETTO POWER BATTERY
ARANCIO ORANGE	POSITIVO SOTTO QUADRO POWER SWITCH ON
NERO BLACK	MASSA GND
GIALLO YELLOW	KLINE
VERDE GREEN	CAN LOW
BIANCO WHITE	CAN HIGH
GRIGIO GREY	POL4 BOOT
BLU BLUE	POL5 CNF1
VIOLA/GRIGIO PURPLE/GREY	TENSIONE PROG. PROG. VOLTAGE
MARRONE BROWN	RESET



GPT CONNECTION

Connect the GPT S1 - GPT S2 pins to the specific wires of the F34NTA15 flat cable as shown in the following picture.

PIN / Colore PIN / Coulor	DESCRIZIONE DESCRIPTION
	GPT_S2
	GPT_S1

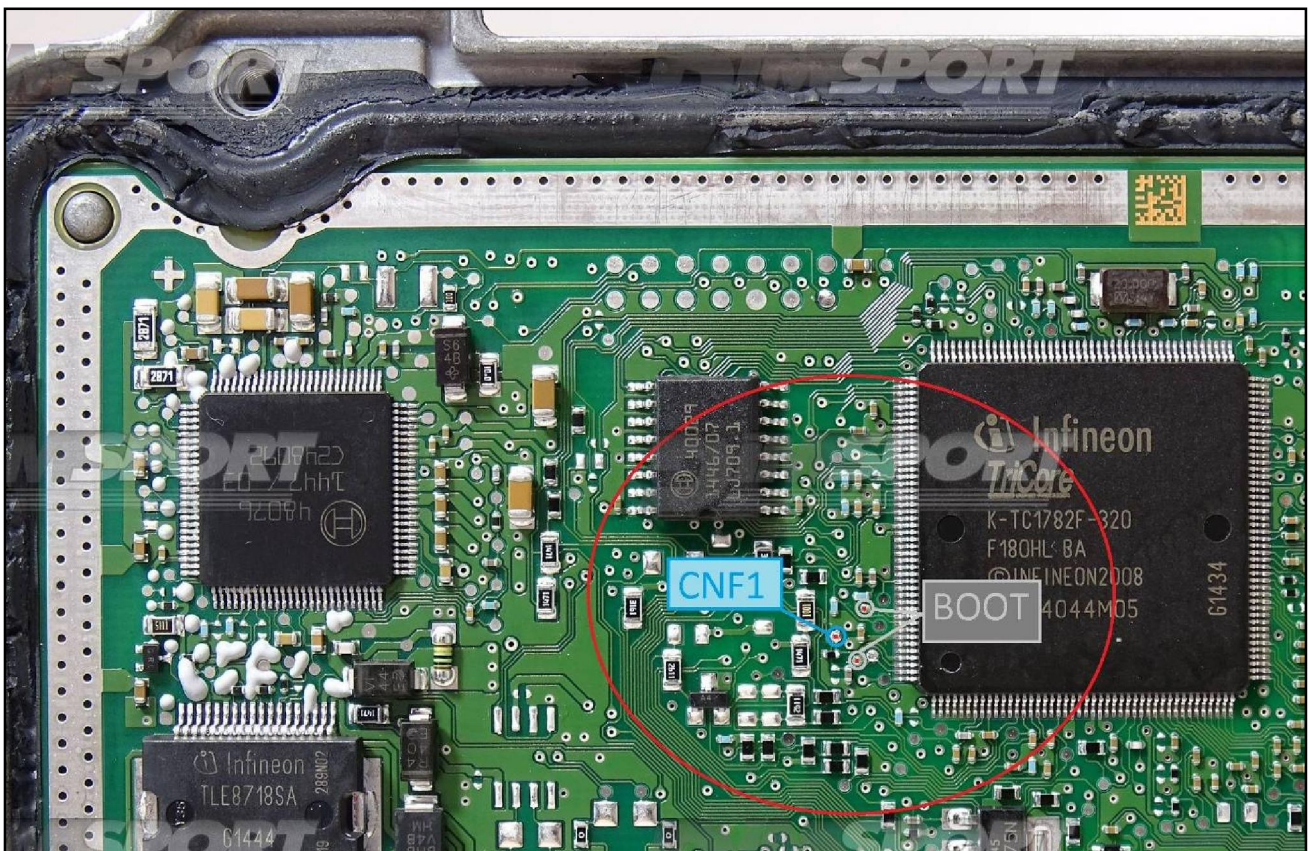


BOSCH ME17.9.20 IROM TC1782 GPT RENAULT

DIRECT BOOT&CNF1 CONNECTION

Connect the GREY&BLUE wires of the cable F32GN037C as described here below:

COLORE FILO WIRE COLOUR	DESCRIZIONE DESCRIPTION
GRIGIO GREY	POL4 BOOT
BLU BLUE	POL5 CNF1



BOSCH ME17.9.20 IROM TC1782 GPT RENAULT

METAL POSITIONING FRAME & BNP POSITIONING FRAME CONNECTION

For the metal positioning frame connection is required the F34DM011 adapter + F32GN038 flat cable. Connect the F32GN038 flat cable to the ANALOG PORT and to the F34DM011 adapter.

For the first ECU connection it is necessary to use the GPT connection too, connect the F34NTA15 flat cable to the DIGITAL PORT and to the ECU as shown at pg.4 .

Perform the connections as shown in the previous detail at pg.5 using for the BOOT&CNF1 signal the specific clamps on the F34DM011 adapter (verify that the yellow BOOT switch present on the F34DM011 is set in position ON).

