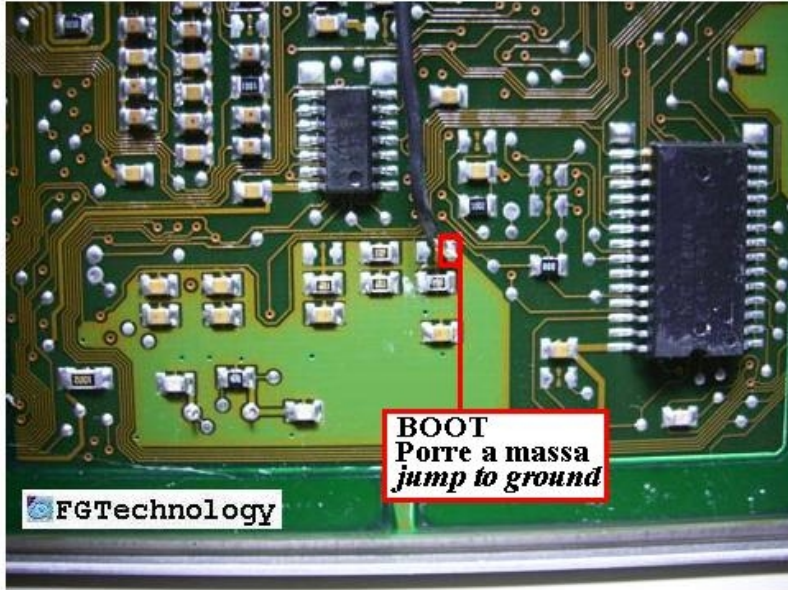


# MERCEDES ME 7.2.8



**PINOUT**

**+12V:** Pin 3, 9 — Spina 5

**GND:** Pin 7 — Spina 5

**K - line:** Pin 29 — Spina 4

**Micro:** C167

**Driver:** BOSCH ME7 - 1 micro -

FLASH 400 BOOT MODE