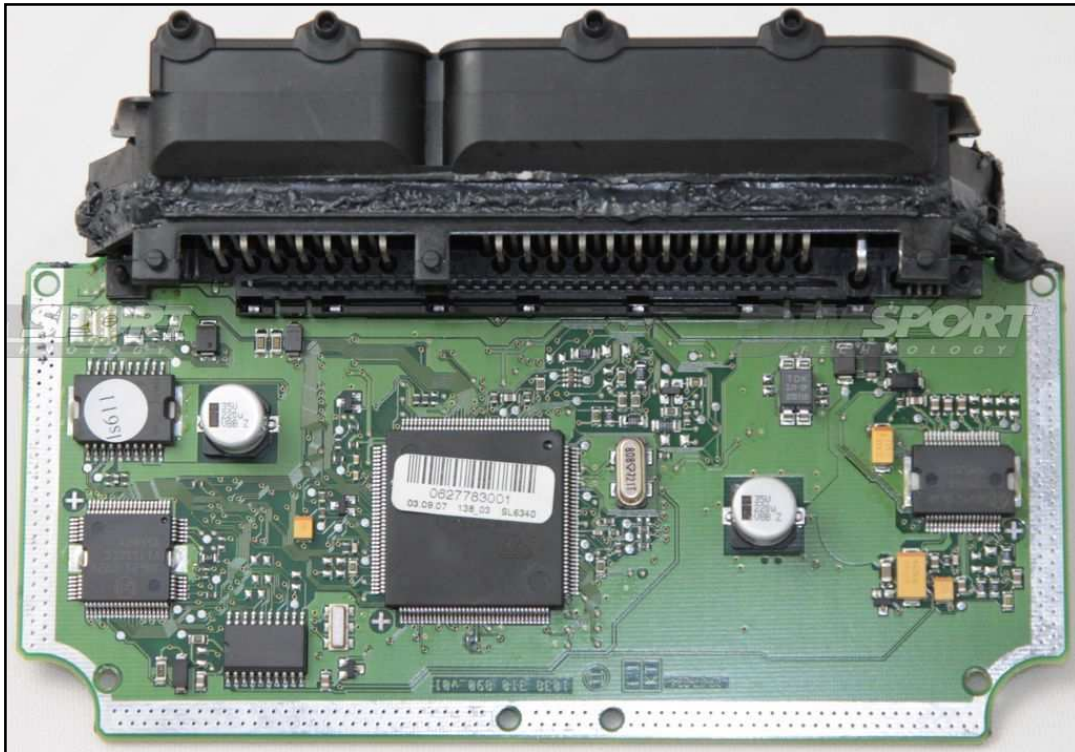


BOSCH ME7.5.20 ME7.5.30 VAG

plugin 186

ECU BOSCH ME7.5.20

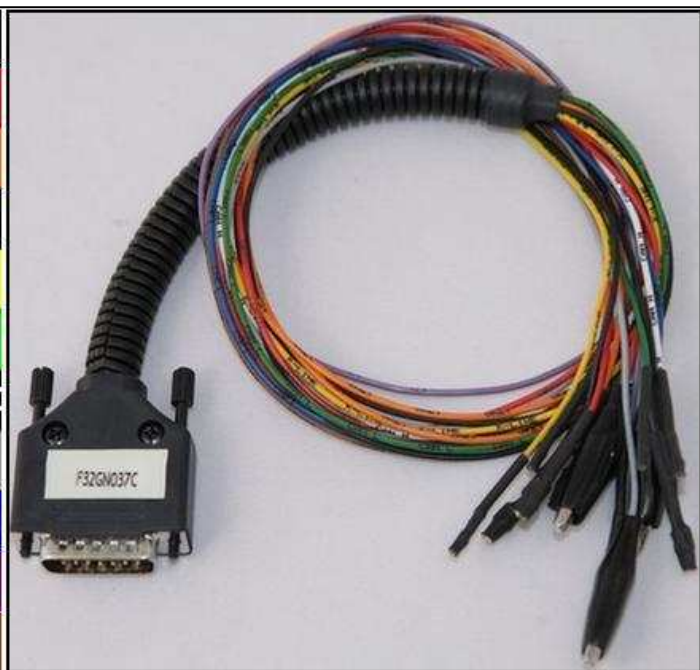
The lay-by pin is placed in the lower part of the ECU.



DIRECT CONNECTION

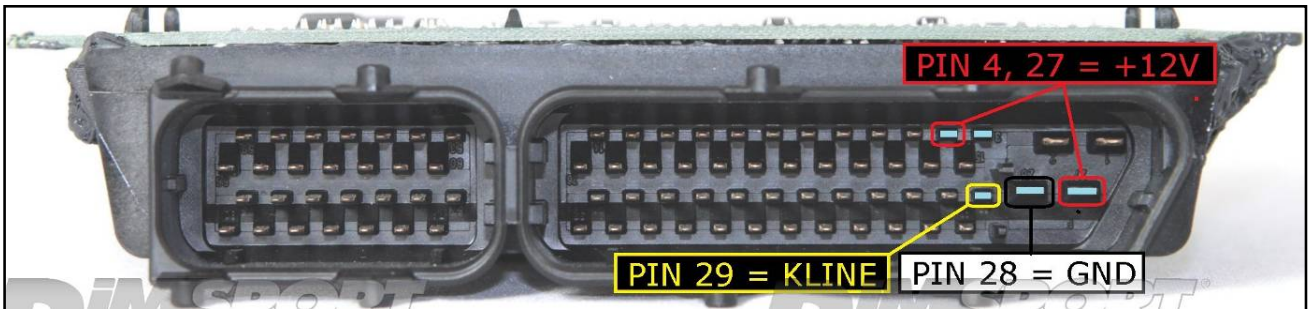
In order to connect to the ECU use the CABLE F32GN037C.
Make sure that the POWER led (red) on Trasdata is ON.

| COLORE FILO WIRE COLOUR | DESCRIZIONE DESCRIPTION |
|-----------------------------|--|
| ROSSO RED | POSITIVO DIRETTO POWER BATTERY |
| ARANCIO ORANGE | POSITIVO SOTTO QUADRO POWER SWITCH ON |
| NERO BLACK | MASSA GND |
| GIALLO YELLOW | KLINE |
| VERDE GREEN | CAN LOW |
| BIANCO WHITE | ICAN HIGH |
| GRIGIO GREY | POL4 BOOT |
| BLU BLUE | POL5 CNF1 |
| VIOLA/GRIGIO PURPLE/GREY | TENSIONE PROG. PROG. VOLTAGE |
| MARRONE BROWN | RESET |



BOSCH ME7.5.20 ME7.5.30 VAG

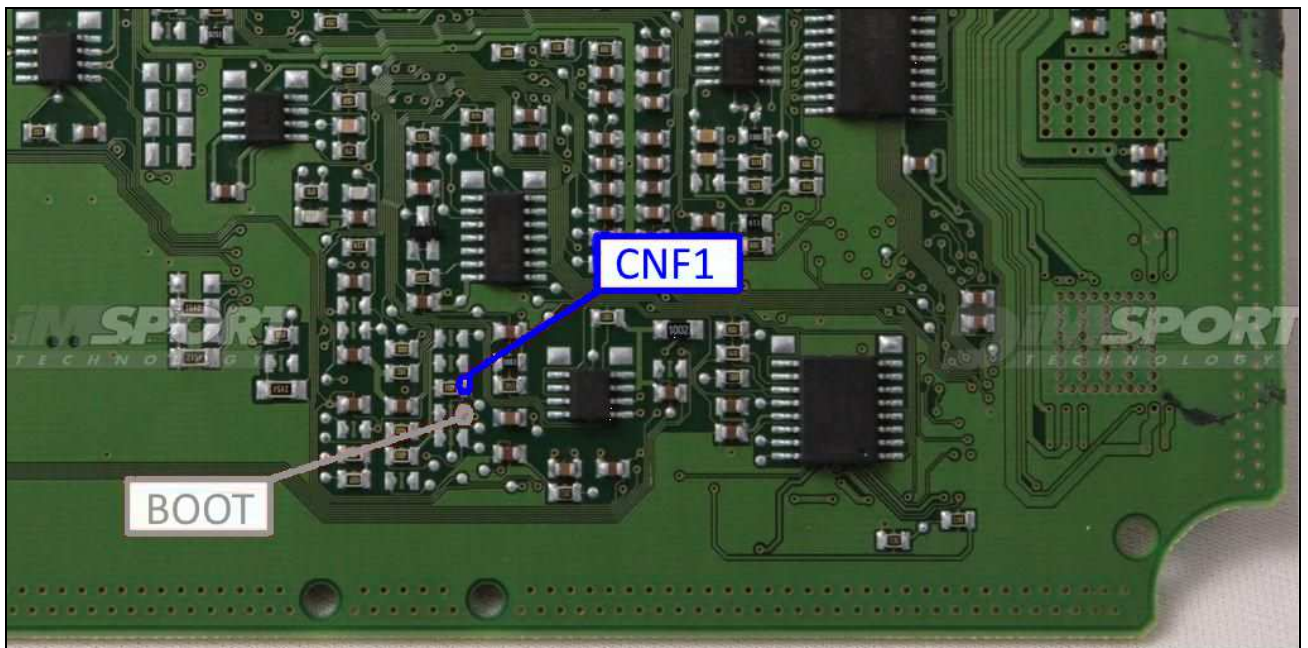
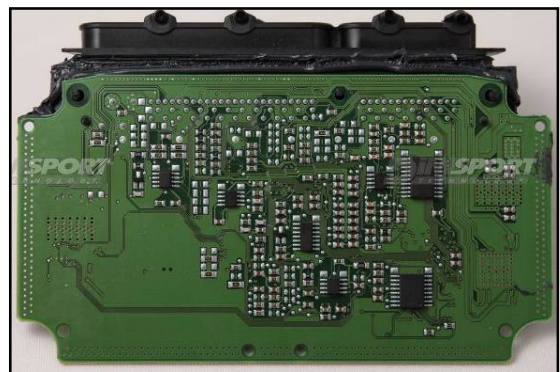
ECU CONNECTOR



BOOT&CNF1 CONNECTION

Connect the GREY and BLUE wires of the cable F32GN037C as described here below :

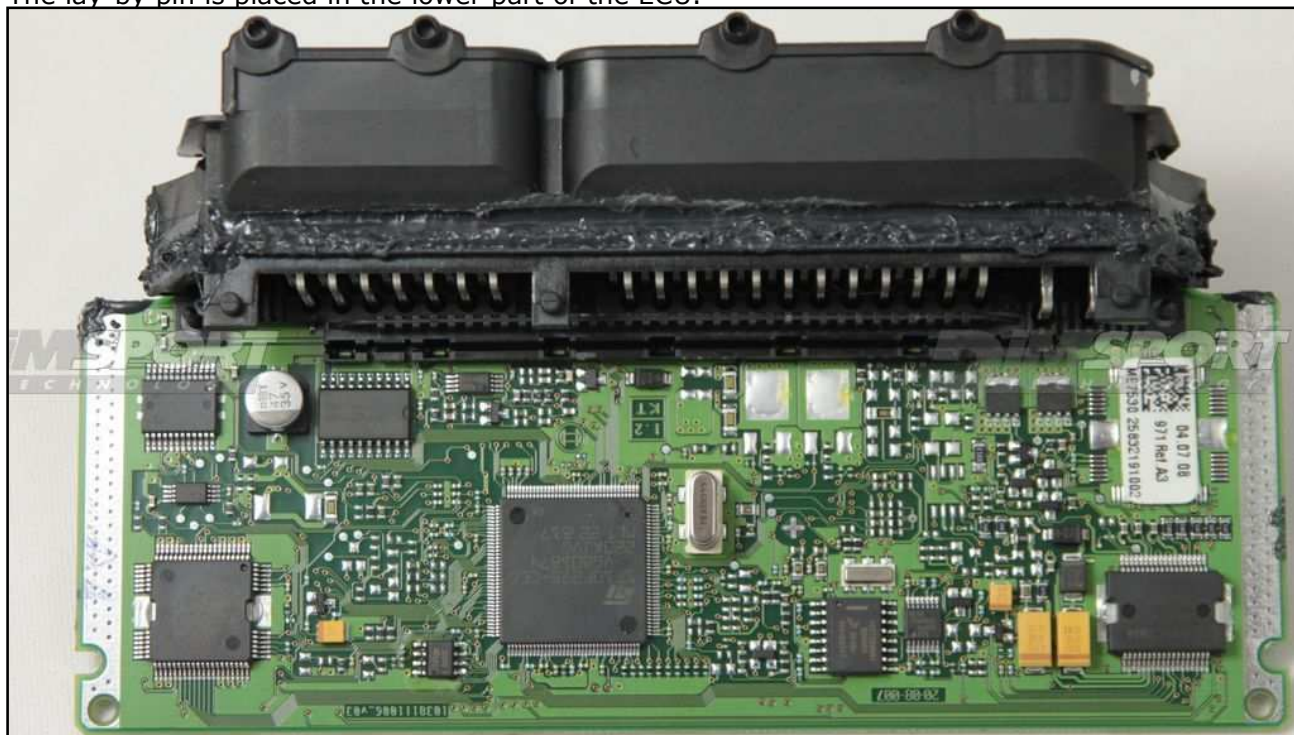
| COLORE FILO WIRE COLOUR | DESCRIZIONE DESCRIPTION |
|----------------------------|----------------------------|
| GRIGIO GREY | POL4 BOOT |
| BLU BLUE | POL5 CNF1 |



BOSCH ME7.5.20 ME7.5.30 VAG

ECU BOSCH ME7.5.30

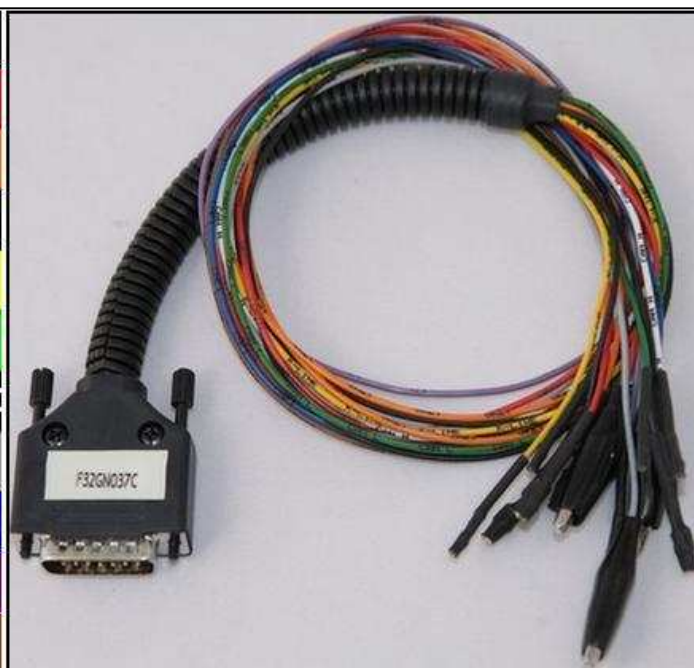
The lay-by pin is placed in the lower part of the ECU.



DIRECT CONNECTION

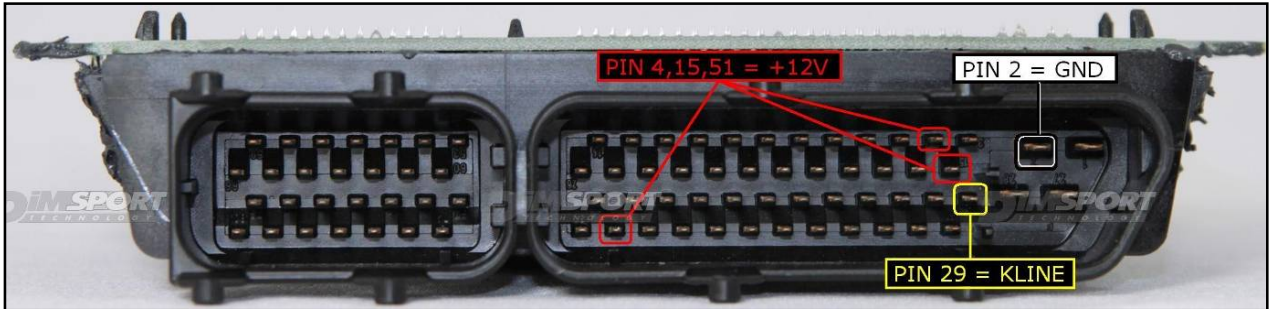
In order to connect to the ECU use the CABLE F32GN037C.
Make sure that the POWER led (red) on Trasdata is ON.

| COLORE FILO WIRE COLOUR | DESCRIZIONE DESCRIPTION |
|-----------------------------|--|
| ROSSO RED | POSITIVO DIRETTO POWER BATTERY |
| ARANCIO ORANGE | POSITIVO SOTTO QUADRO POWER SWITCH ON |
| NERO BLACK | MASSA GND |
| GIALLO YELLOW | KLINE |
| VERDE GREEN | CAN LOW |
| BIANCO WHITE | CAN HIGH |
| GRIGIO GREY | POL4 BOOT |
| BLU BLUE | POL5 CNF1 |
| VIOLA/GRIGIO PURPLE/GREY | TENSIONE PROG. PROG. VOLTAGE |
| MARRONE BROWN | RESET |



BOSCH ME7.5.20 ME7.5.30 VAG

ECU CONNECTOR



To the pin 4,15,51 you can connect both wires red and orange, they both have 12 Volt signal.

BOOT&CNF1 CONNECTION

Connect the GREY and BLUE wires of the cable F32GN037C as described here below :

| COLORE FILO WIRE COLOUR | DESCRIZIONE DESCRIPTION |
|----------------------------|----------------------------|
| GRIGIO GREY | POL4 BOOT |
| BLU BLUE | POL5 CNF1 |

