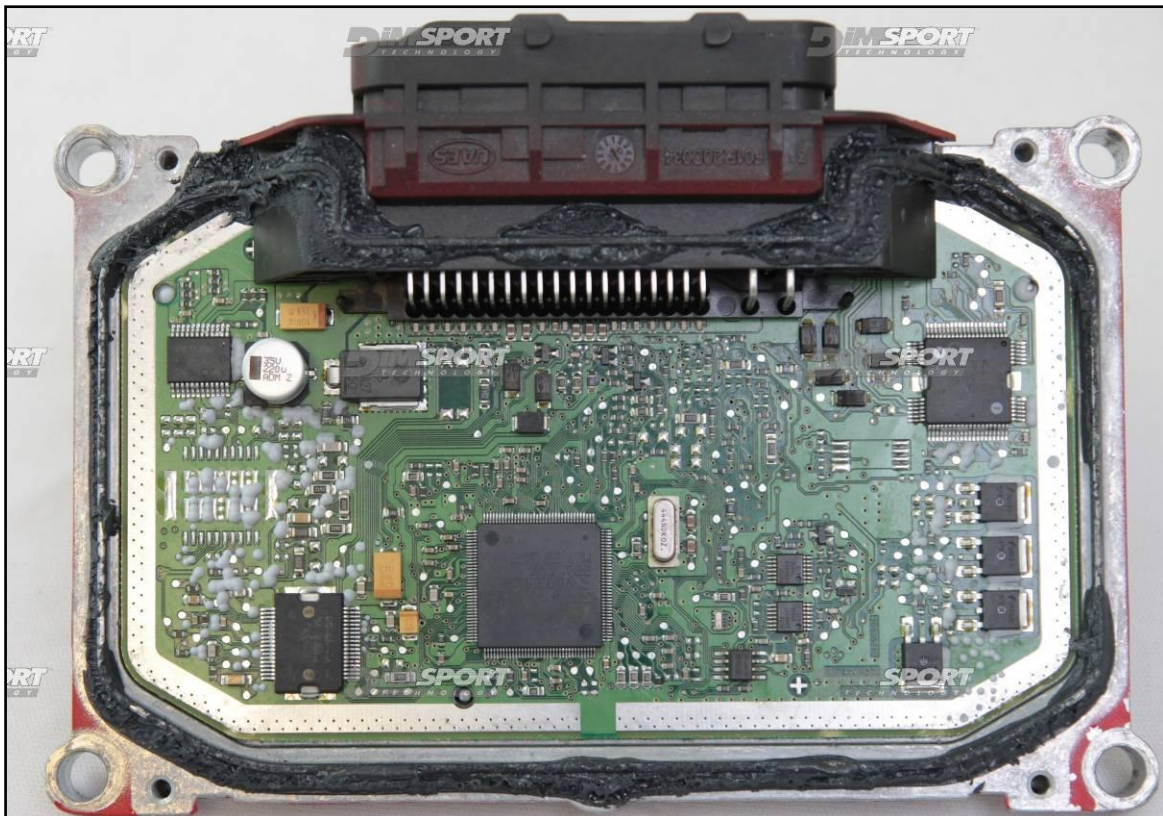


# BOSCH ME7.8.8 Great Wall Florid

## plugin 439 - 497

The lay-by pin is placed in the lower part of the ECU.



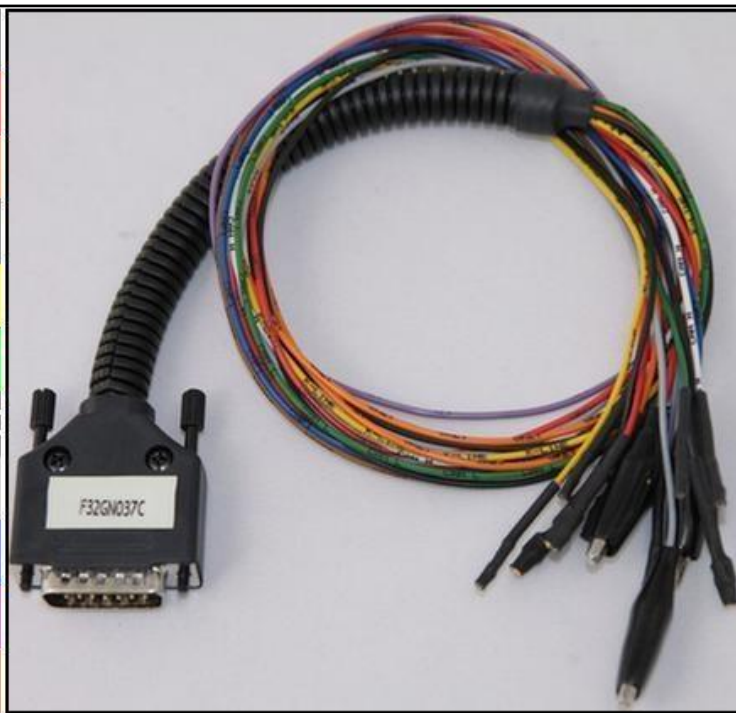
# BOSCH ME7.8.8 Great Wall Florid

## DIRECT CONNECTION

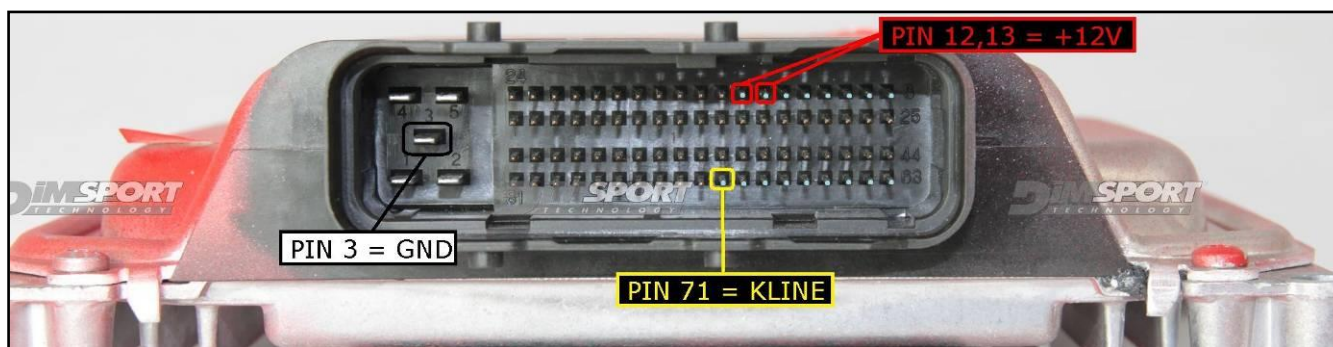
In order to connect to the ECU use the CABLE F32GN037C/D.

Make sure that the POWER led (red) on Trasdata is ON.

COLORE FILO WIRE COLOUR		DESCRIZIONE DESCRIPTION
ROSSO RED		POSITIVO DIRETTO POWER BATTERY
ARANCIO ORANGE		POSITIVO SOTTO QUADRO POWER SWITCH ON
NERO BLACK		MASSA GND
GIALLO YELLOW		KLINE
VERDE GREEN		CAN LOW
BIANCO WHITE		CAN HIGH
GRIGIO GREY		POL4 BOOT
BLU BLUE		POL5 CNF1
VIOLA/GRIGIO PURPLE/GREY		TENSIONE PROG. PROG. VOLTAGE
MARRONE BROWN		RESET



## ECU CONNECTOR





# BOSCH ME7.8.8 Great Wall Florid

## BOOT&CNF1 CONNECTION

**WARNING:** in order to communicate it is necessary to remove the resistor R0 shown in the picture here below.

Connect the BLU and GREY wires of the F32GN037C/D cable as shown in the following picture:

COLORE FILO WIRE COLOUR	DESCRIZIONE DESCRIPTION
GRIGIO GREY	POL4 BOOT
BLU BLUE	POL5 CNF1

