

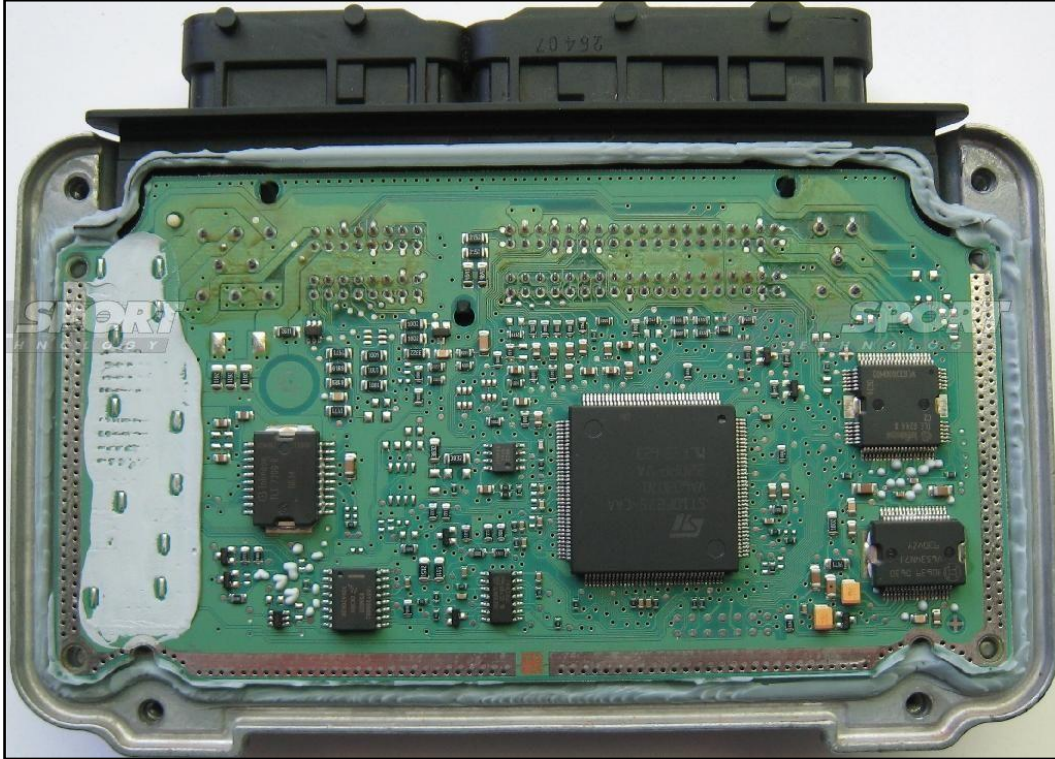
BOSCH ME7.9.51 TOYOTA

plugin 054 - 1740

Attention! There are 2 different types of HW:

HW TYPE 01 :

The lay-by pins are placed in the lower part of the ECU.



DIRECT CONNECTION

In order to connect to the ECU use the CABLE F32GN037C/D.

Make sure that the POWER led (red) on Trasdata is ON.

DO NOT USE THIS CONNECTION WITH THE METAL POSITIONING FRAME

| COLORE FILO WIRE COLOUR | DESCRIZIONE DESCRIPTION |
|-----------------------------|------------------------------------------|
| ROSSO RED | POSITIVO DIRETTO POWER BATTERY |
| ARANCIO ORANGE | POSITIVO SOTTO QUADRO POWER SWITCH ON |
| NERO BLACK | MASSA GND |
| GIALLO YELLOW | KLINE |
| VERDE GREEN | CAN LOW |
| BIANCO WHITE | CAN HIGH |
| GRIGIO GREY | POL4 BOOT |
| BLU BLUE | POL5 CNF1 |
| VIOLA/GRIGIO PURPLE/GREY | TENSIONE PROG. PROG. VOLTAGE |
| MARRONE BROWN | RESET |



BOSCH ME7.9.51 TOYOTA

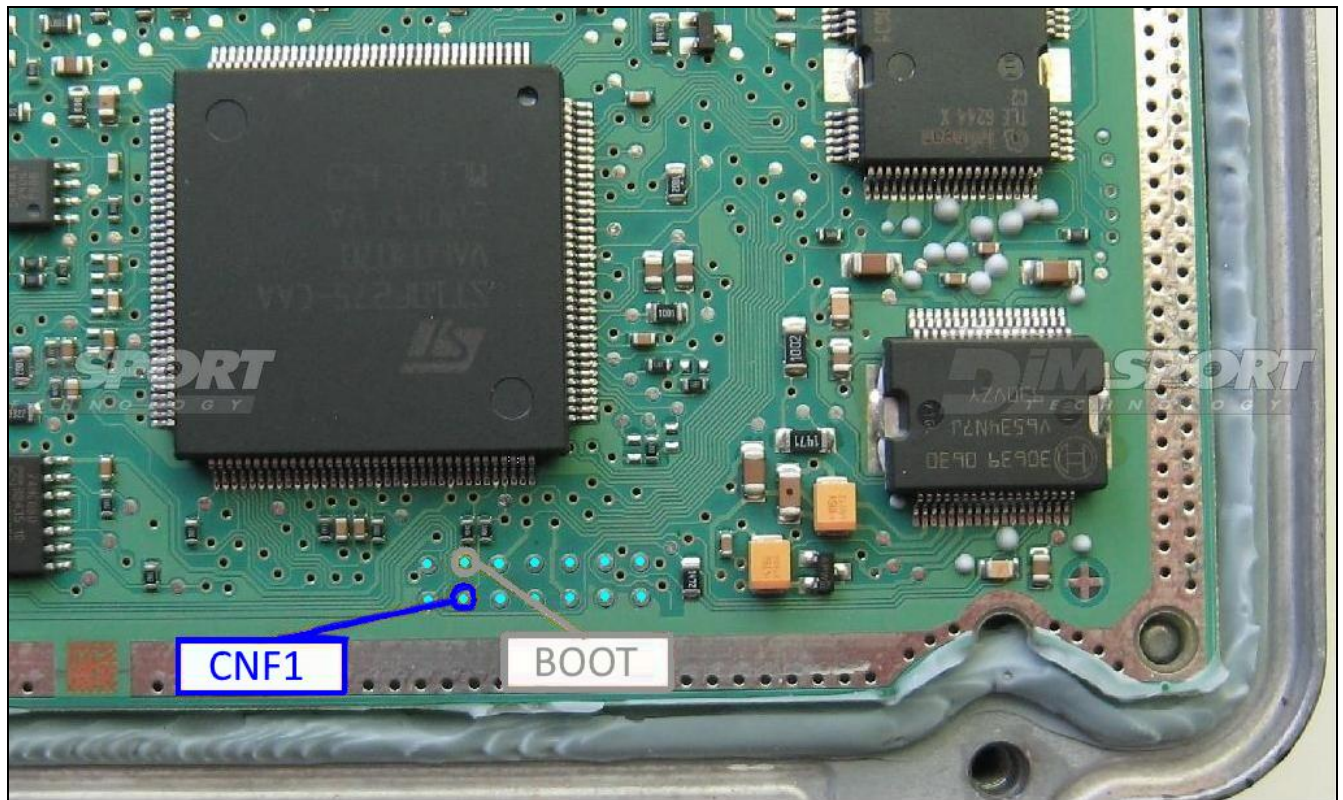
ECU CONNECTOR



BOOT&CNF1 CONNECTION

Connect GREY and BLUE wire2 of the cable F32GN037C/D as described here below :

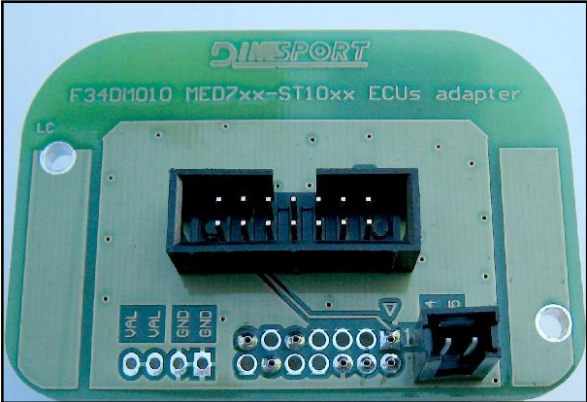
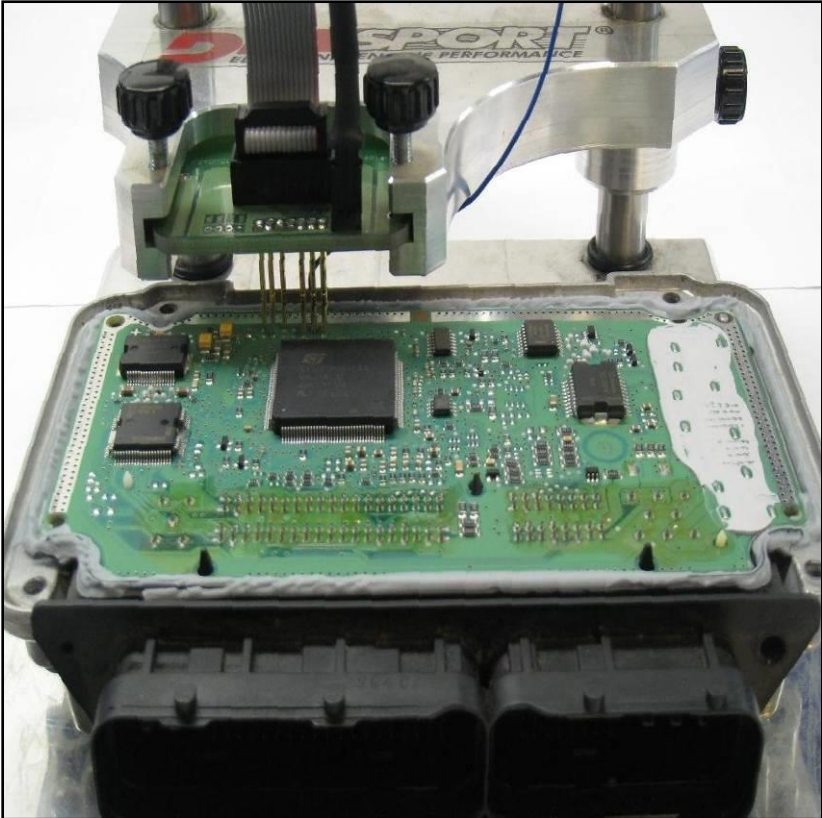
| COLORE FILO WIRE COLOUR | DESCRIZIONE DESCRIPTION |
|----------------------------|----------------------------|
| GRIGIO GREY | POL4 BOOT |
| BLU BLUE | POL5 CNF1 |



BOSCH ME7.9.51 TOYOTA

METAL POSITIONING FRAME CONNECTION

With the METAL POSITIONING FRAME it is required to solder the CNF1 as shown in the picture here below.



BOSCH ME7.9.51 TOYOTA

HW TYPE 02 :

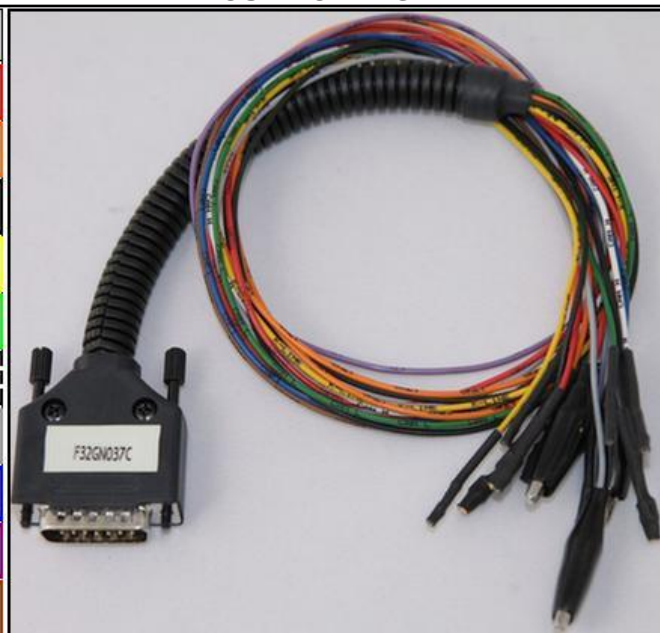


DIRECT CONNECTION

In order to connect to the ECU use the CABLE F32GN037C/D.
Make sure that the POWER led (red) on Trasdata is ON.

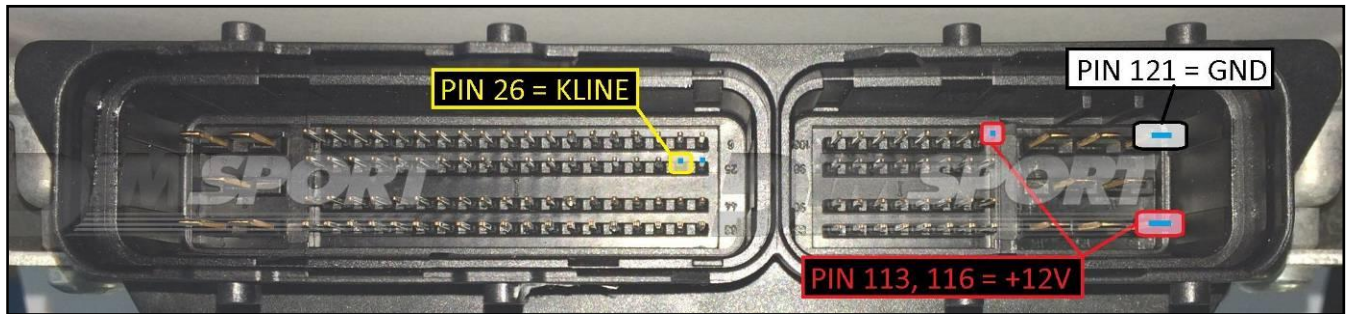
DO NOT USE THIS CONNECTION WITH THE METAL POSITIONING FRAME

| COLORE FILO WIRE COULOR | DESCRIZIONE DESCRIPTION |
|-----------------------------|------------------------------------------|
| ROSSO RED | POSITIVO DIRETTO POWER BATTERY |
| ARANCIO ORANGE | POSITIVO SOTTO QUADRO POWER SWITCH ON |
| NERO BLACK | MASSA GND |
| GIALLO YELLOW | KLINE |
| VERDE GREEN | CAN LOW |
| BIANCO WHYTE | CAN HIGH |
| GRIGIO GREY | POL4 BOOT |
| BLU BLUE | POL5 CNF1 |
| VIOLA/GRIGIO PURPLE/GREY | TENSIONE PROG. PROG. VOLTAGE |
| MARRONE GREY | RESET |



BOSCH ME7.9.51 TOYOTA

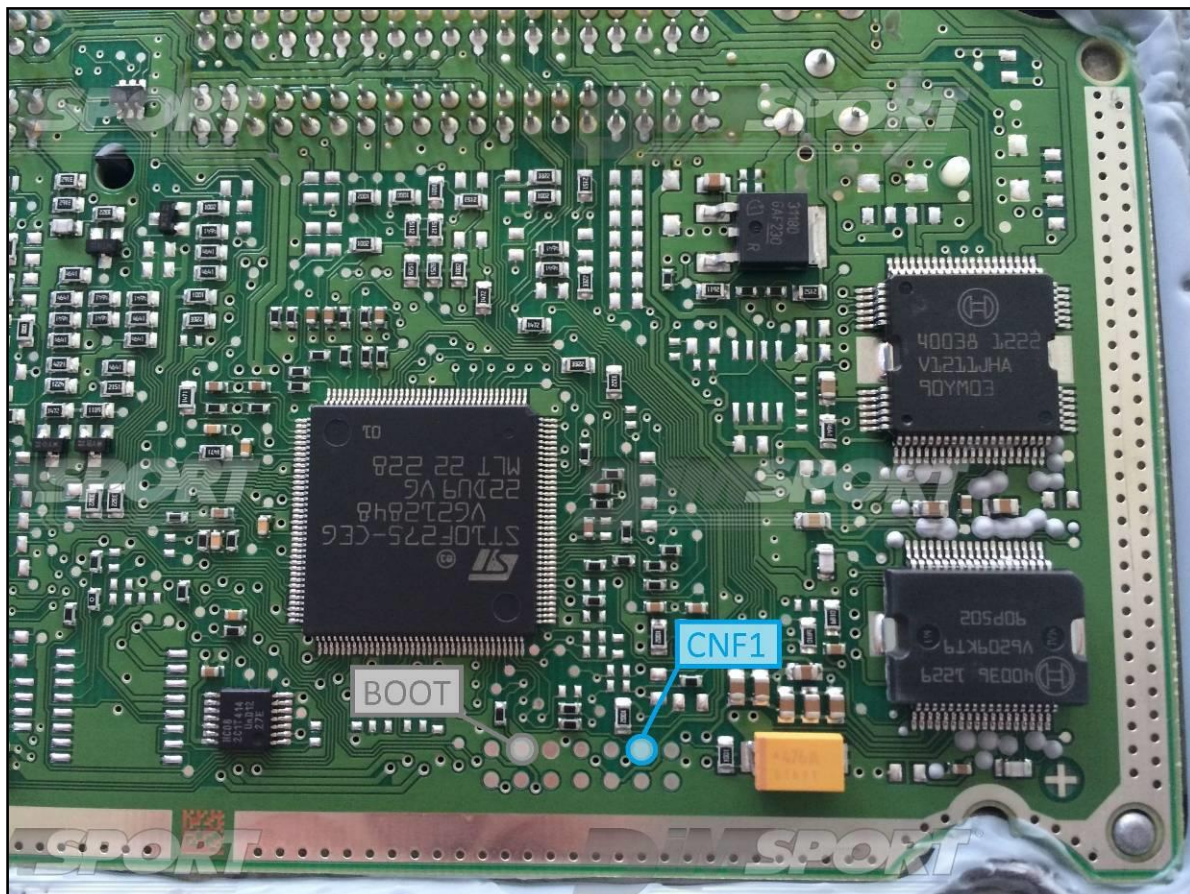
ECU CONNECTOR



BOOT&CNF1 CONNECTION

Connect GREY and BLUE wire2 of the cable F32GN037C/D as described here below:

| COLORE FILO WIRE COULOR | DESCRIZIONE DESCRIPTION |
|----------------------------|----------------------------|
| GRIGIO GREY | POL4 BOOT |
| BLU BLUE | POL5 CNF1 |



BOSCH ME7.9.51 TOYOTA

METAL POSITIONING FRAME

