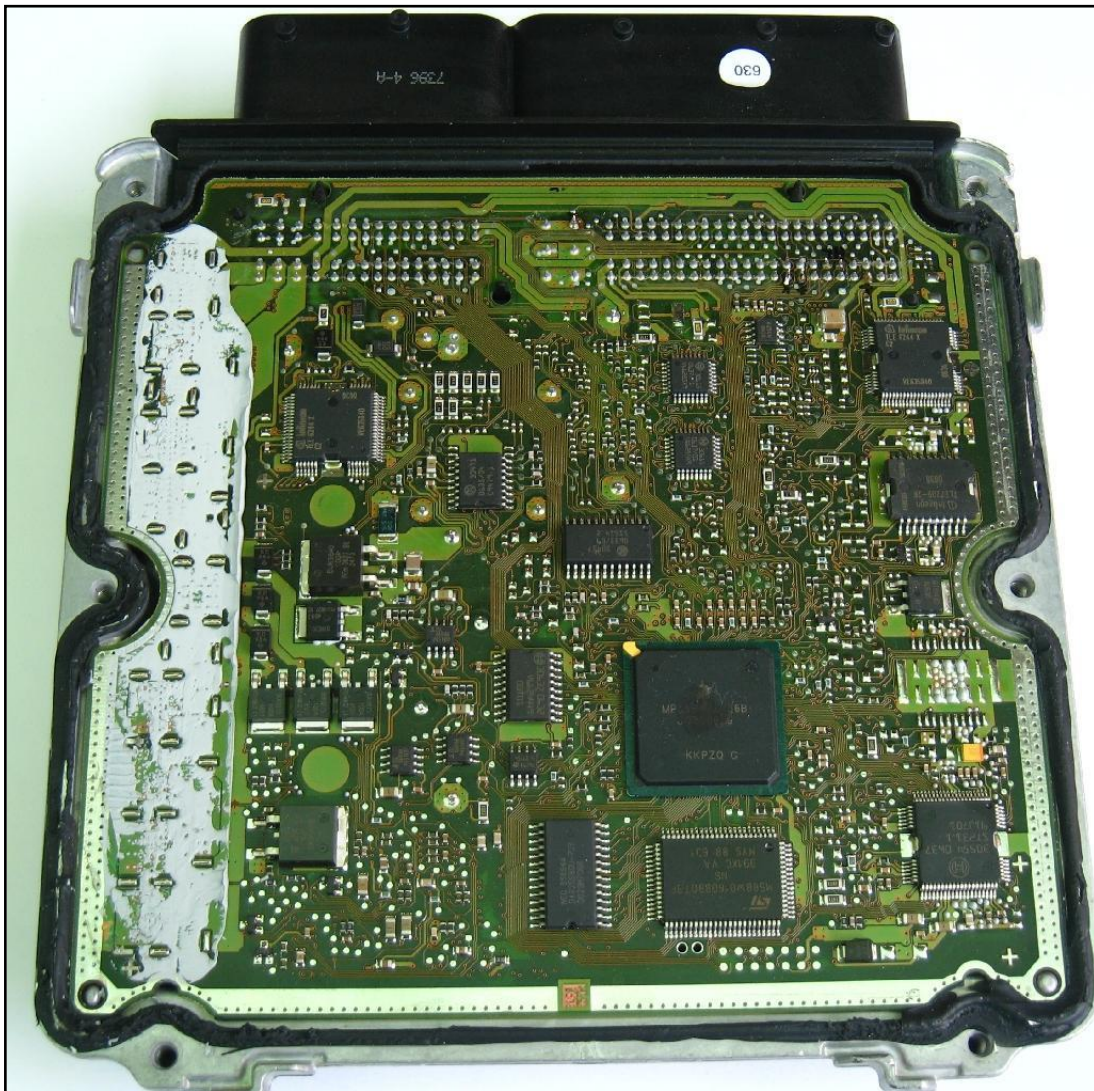


# BOSCH ME9+ VAG

## plugin 064,108,536

The lay-by pins are placed in the lower part of the ECU.

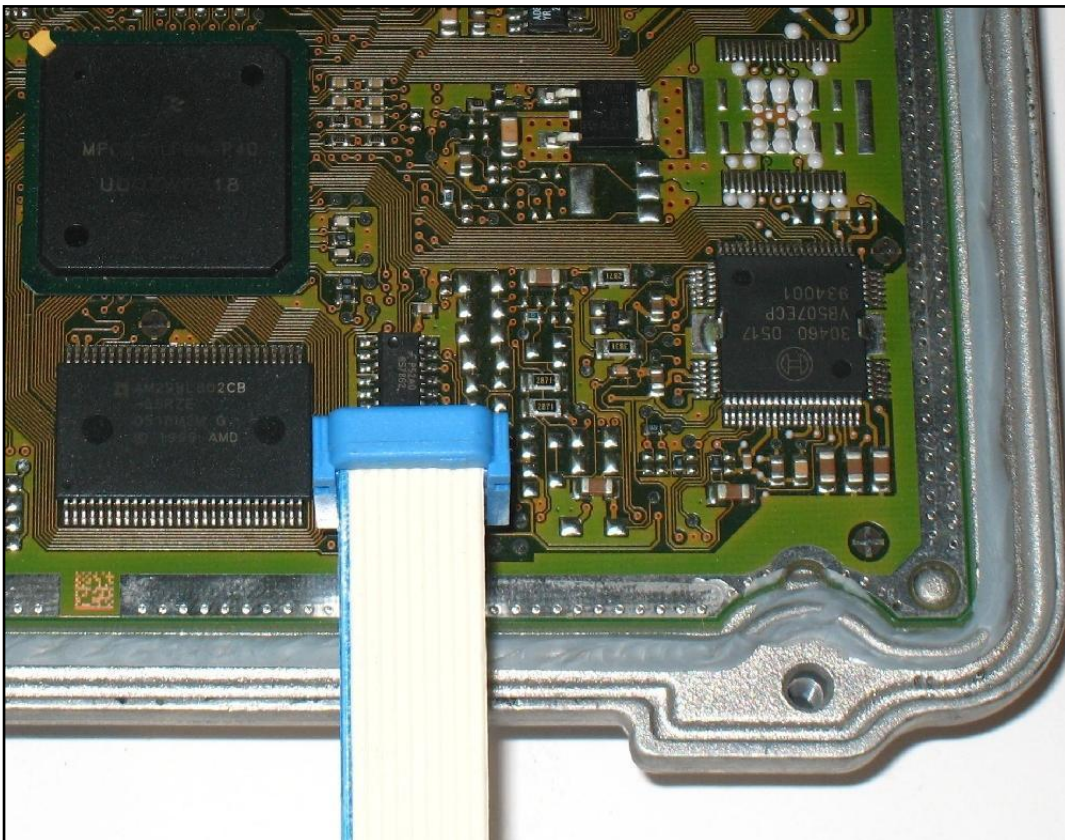
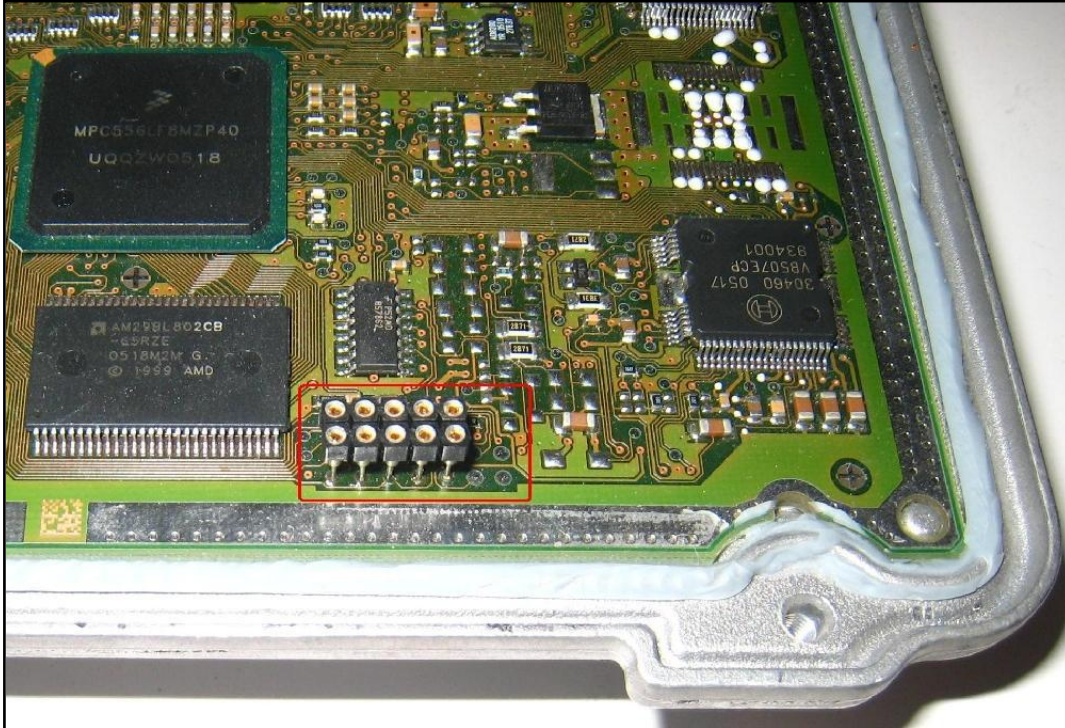


## BOSCH ME9+ VAG

### DIRECT CONNECTION

Among these 14's we will use the first 10's from the left to solder the strips or guiding pin strips.

**The coloured stripe of the flat cable identifies the pin number one and MUST face left (you should watch the ECU with the connector placed upwards ( EPROM side ).**



# BOSCH ME9+ VAG

## DIMA CONNECTION F34DM002

