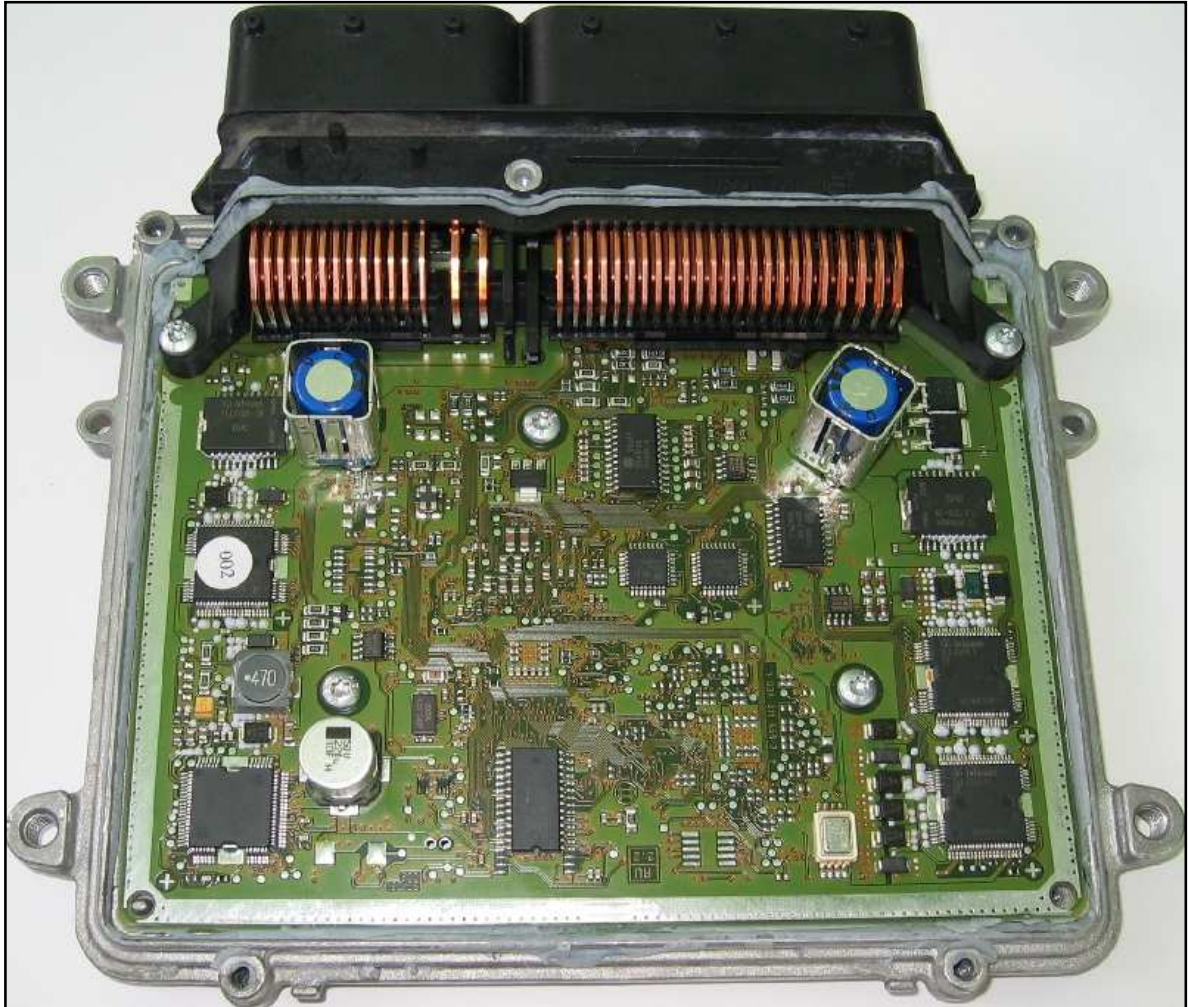


BOSCH ME9.7/MED9.7 MEB

plugin 102,204  
ME9.7

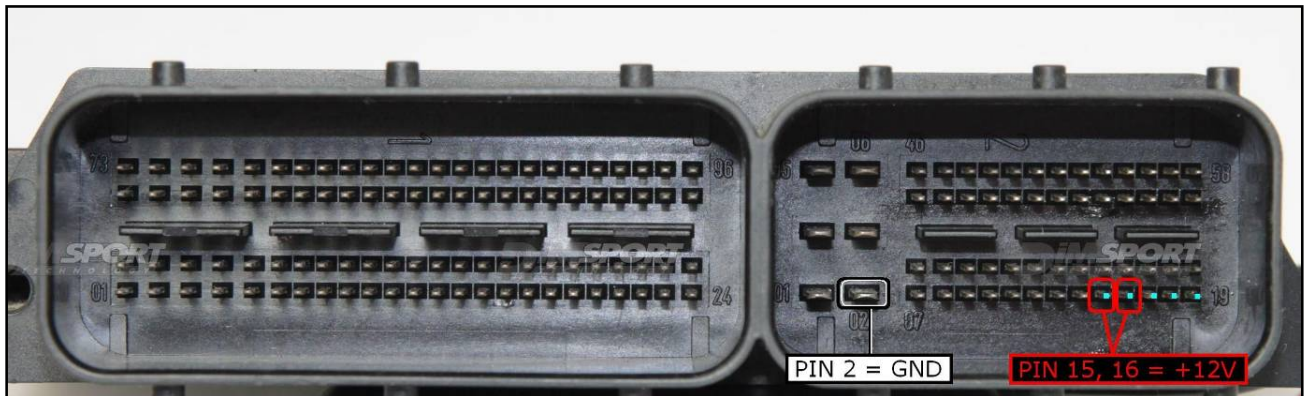
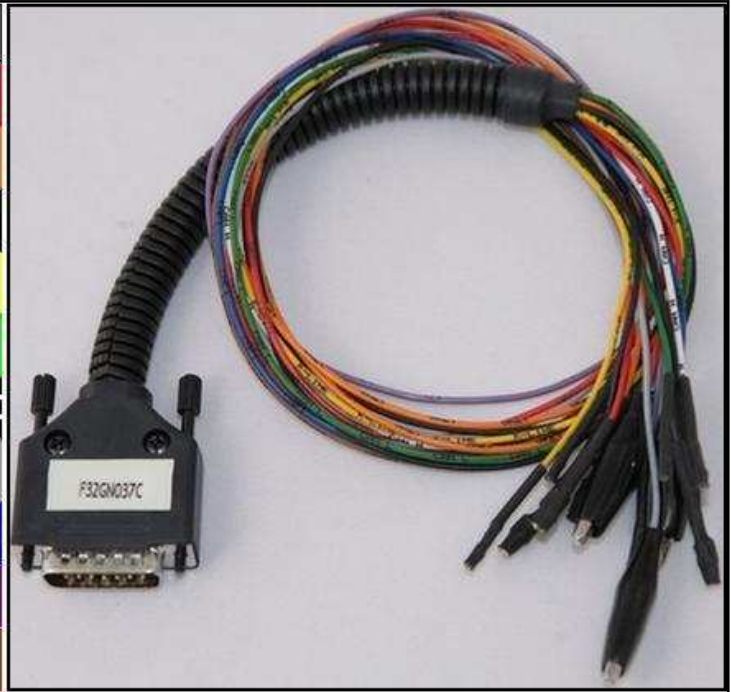


## BOSCH ME9.7/MED9.7 MEB

### ECU CONNECTOR

In order to connect to the ECU use the CABLE F32GN037C.  
Make sure that the POWER led (red) on Trasdata is ON.

COLORE FILO WIRE COLOUR	DESCRIZIONE DESCRIPTION
ROSSO RED	POSITIVO DIRETTO POWER BATTERY
ARANCIO ORANGE	POSITIVO SOTTO QUADRO POWER SWITCH ON
NERO BLACK	MASSA GND
GIALLO YELLOW	KLINE
VERDE GREEN	CAN LOW
BIANCO WHITE	CAN HIGH
GRIGIO GREY	POL4 BOOT
BLU BLUE	POL5 CNF1
VIOLA/GRIGIO PURPLE/GREY	TENSIONE PROG. PROG. VOLTAGE
MARRONE BROWN	RESET

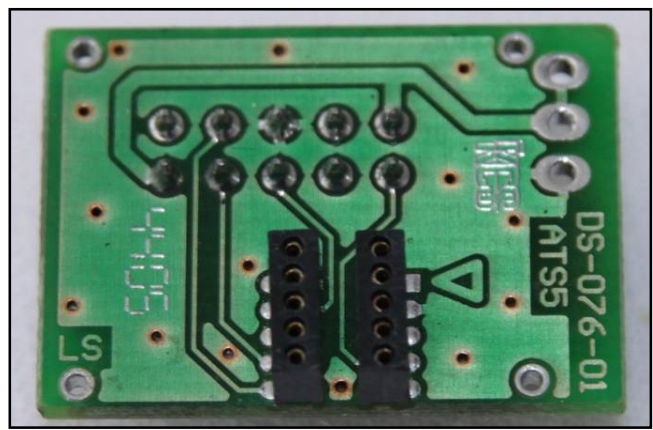
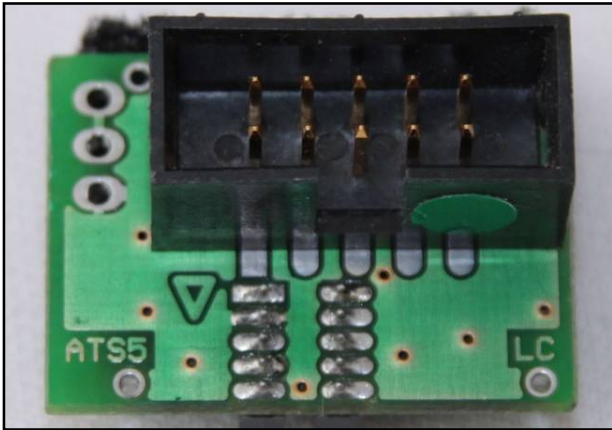


## BOSCH ME9.7/MED9.7 MEB

### **DIRECT CONNECTION**

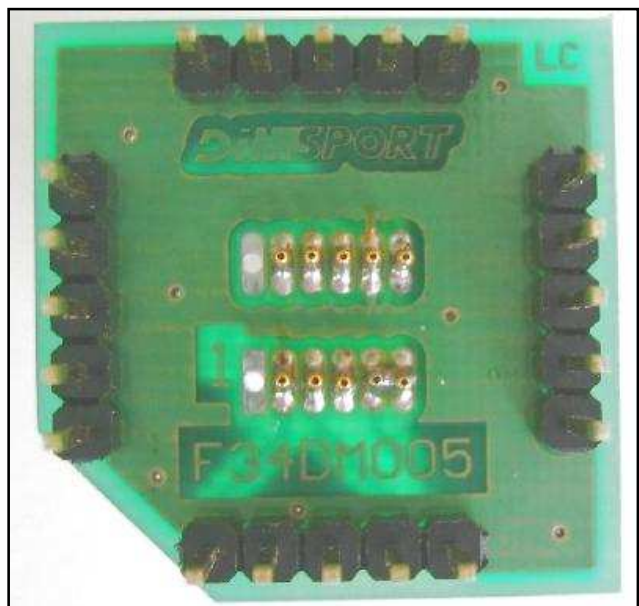
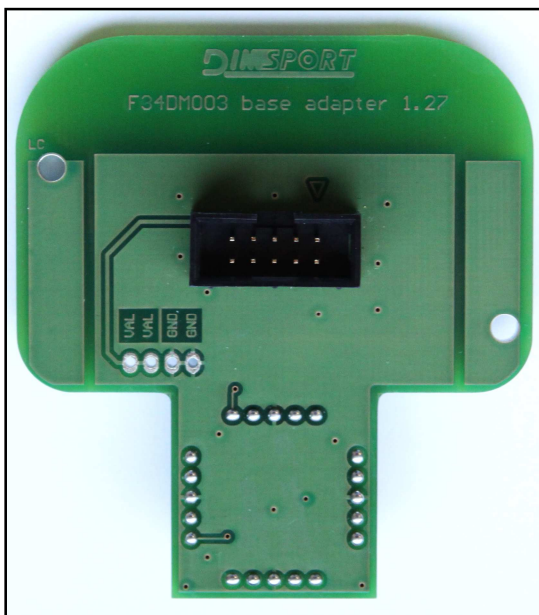
Use SIEMENS F34NTA06 adapter

The triangle symbol on the adapter board must not be considered a valid reference for the probe positioning



BOSCH ME9.7/MED9.7 MEB

**DIMA CONNECTION**  
F34DM003+F35DM005



BOSCH ME9.7/MED9.7 MEB

**MED9.7**



BOSCH ME9.7/MED9.7 MEB

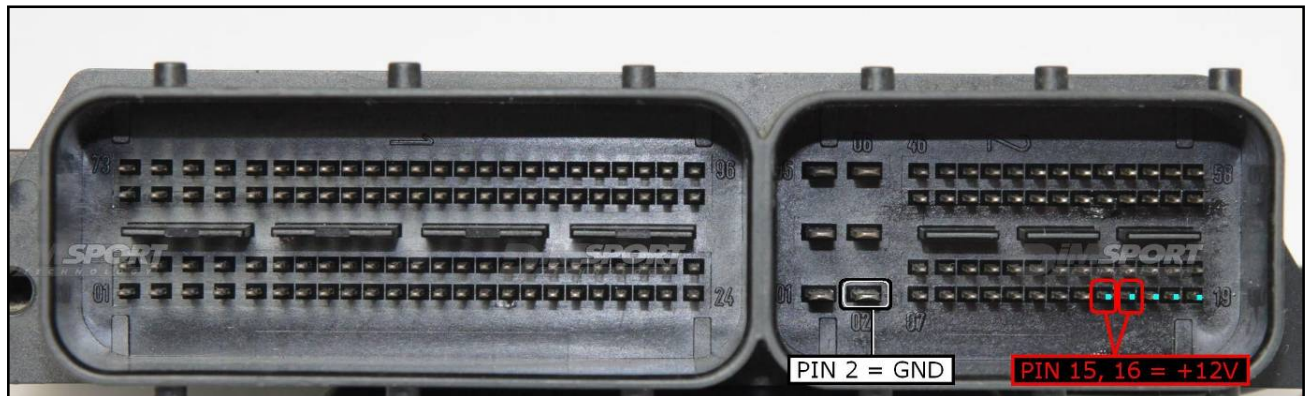
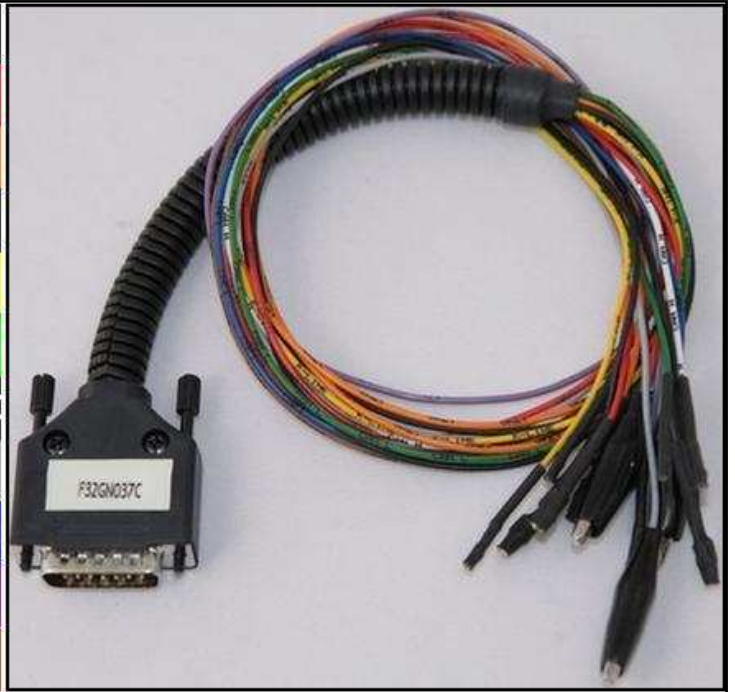


# BOSCH ME9.7/MED9.7 MEB

## ECU CONNECTOR

In order to connect to the ECU use the CABLE F32GN037C.  
Make sure that the POWER led (red) on Trasdata is ON.

COLORE FILO WIRE COLOUR	DESCRIZIONE DESCRIPTION
ROSSO RED	POSITIVO DIRETTO POWER BATTERY
ARANCIO ORANGE	POSITIVO SOTTO QUADRO POWER SWITCH ON
NERO BLACK	MASSA GND
GIALLO YELLOW	KLINE
VERDE GREEN	CAN LOW
BIANCO WHITE	CAN HIGH
GRIGIO GREY	POL4 BOOT
BLU BLUE	POL5 CNF1
VIOLA/GRIGIO PURPLE/GREY	TENSIONE PROG. PROG. VOLTAGE
MARRONE BROWN	RESET

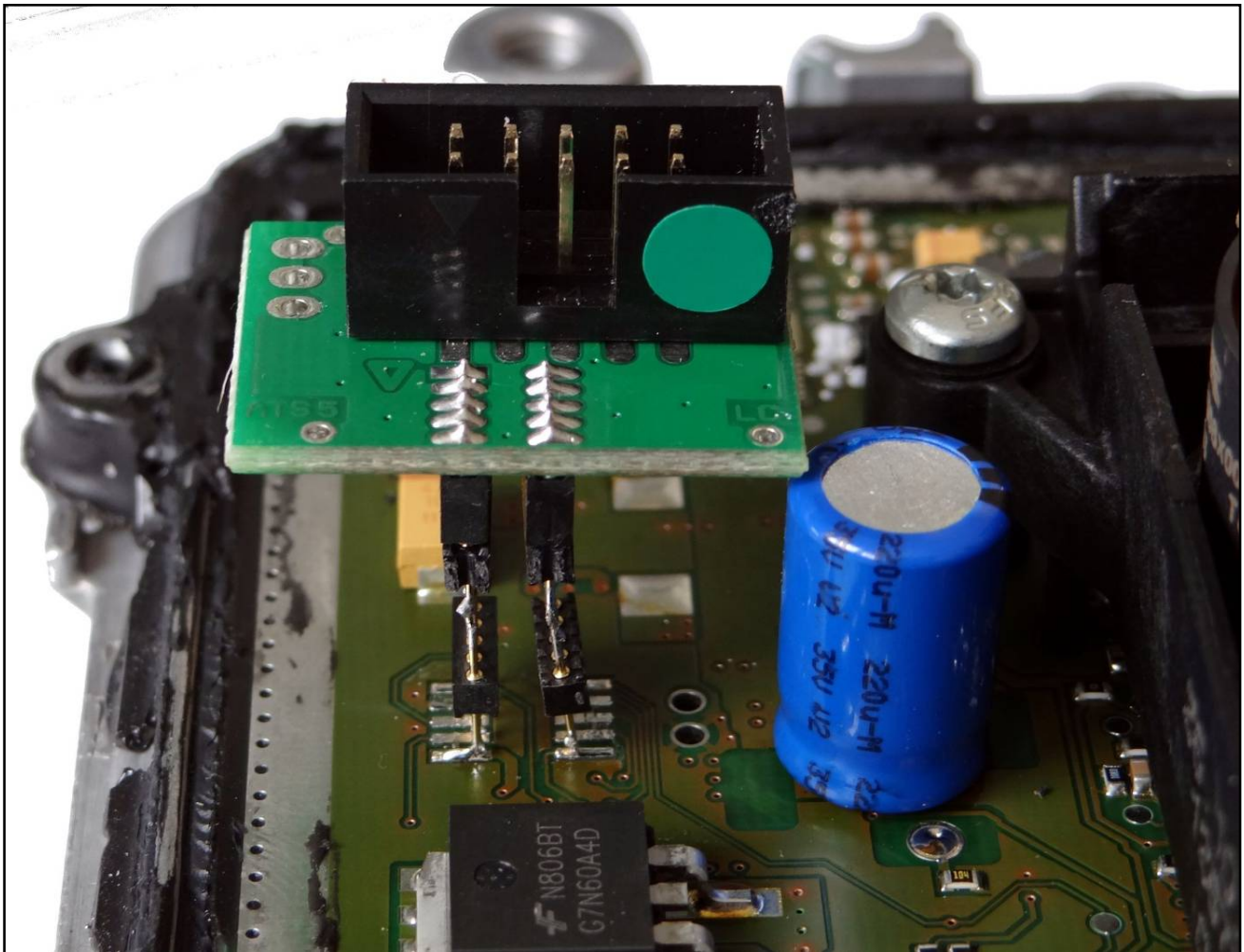
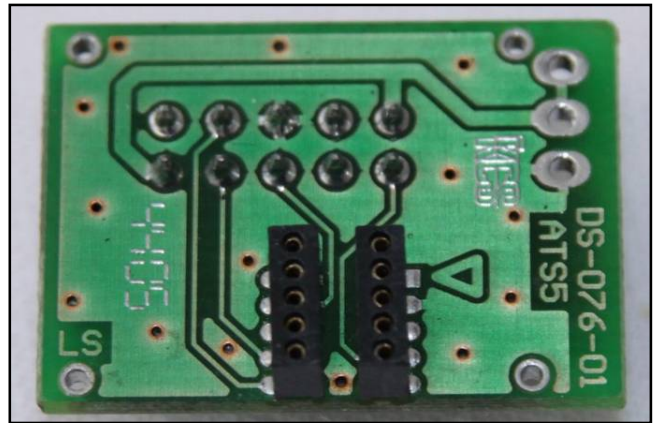
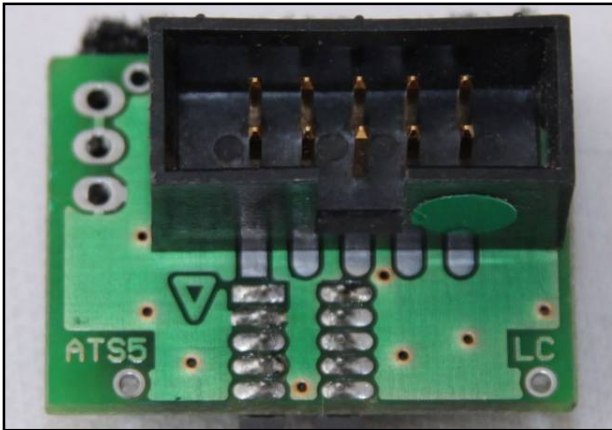


## BOSCH ME9.7/MED9.7 MEB

### **DIRECT CONNECTION F34NTA06**

Use the SIEMENS F34NTA06 adapter.

Due to the condenser position it is necessary to solder a double level of strips as shown in the following pictures.

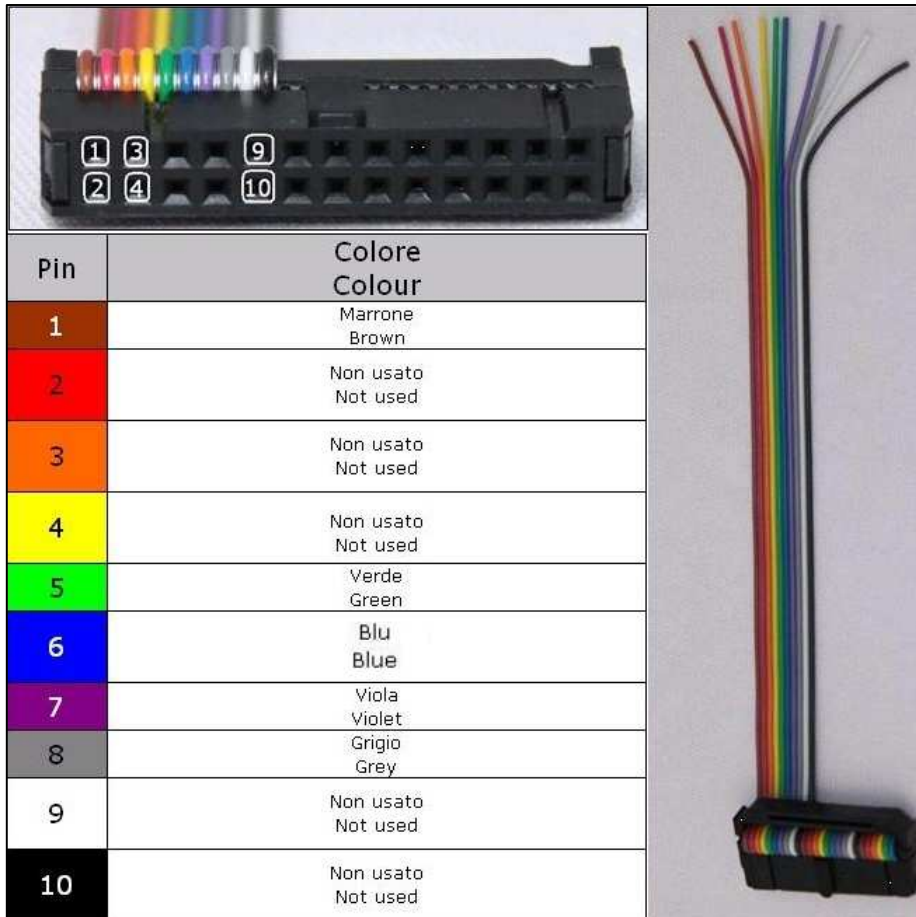




# BOSCH ME9.7/MED9.7 MEB

## LOOSE WIRES BDM CONNECTION

Connect the F34NTF051 wiring as shown here below :



The image shows a black 10-pin connector with colored wires (1-10) and a bundle of loose wires with a matching connector. The wires are color-coded according to the table below.

Pin	Colore Colour
1	Marrone Brown
2	Non usato Not used
3	Non usato Not used
4	Non usato Not used
5	Verde Green
6	Blu Blue
7	Viola Violet
8	Grigio Grey
9	Non usato Not used
10	Non usato Not used

