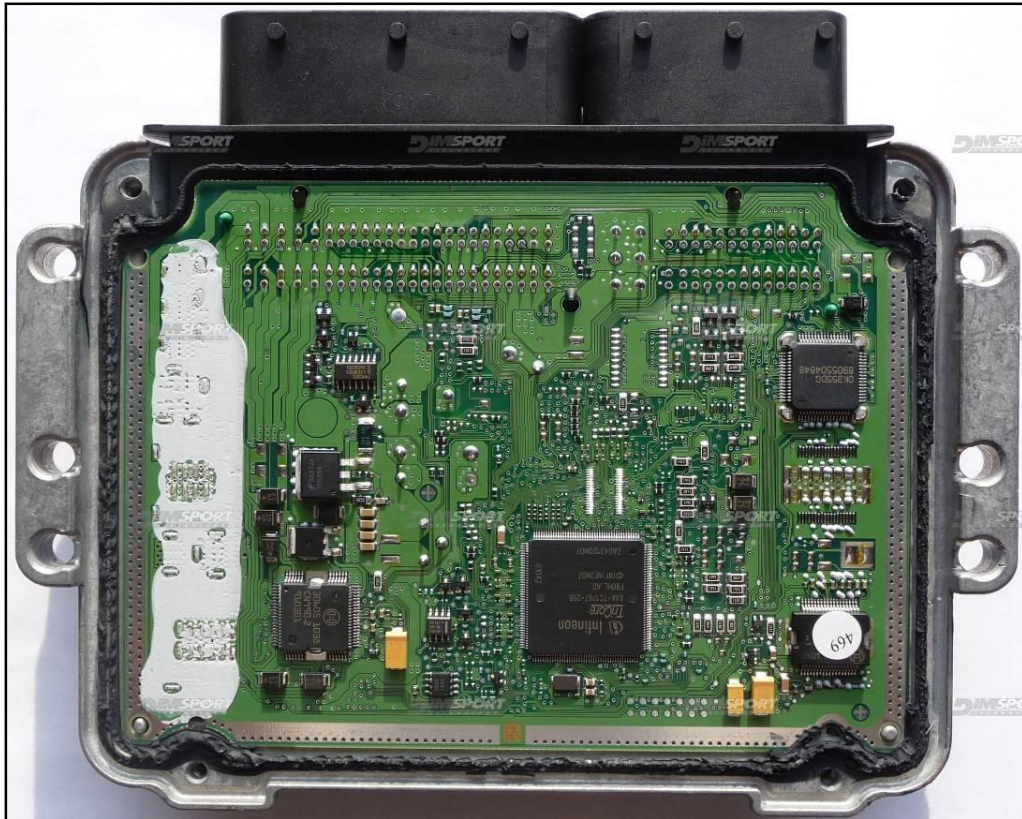


BOSCH MED172 IROM TC1767 FORD

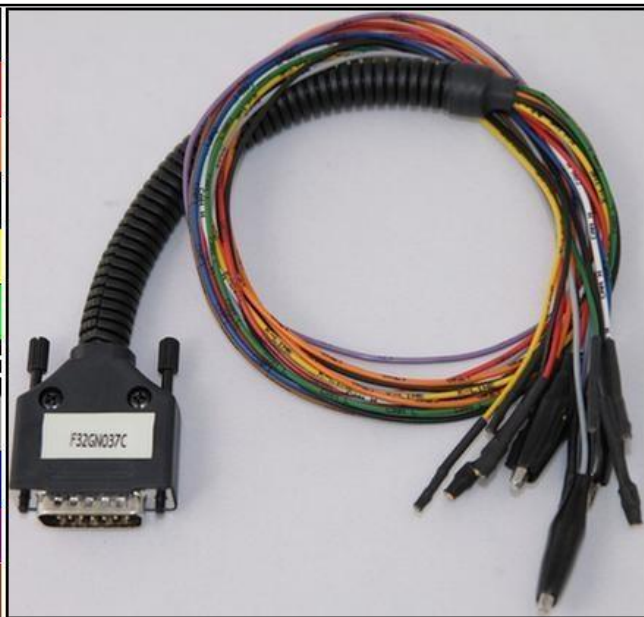
plugin **238**



DIRECT CONNECTION

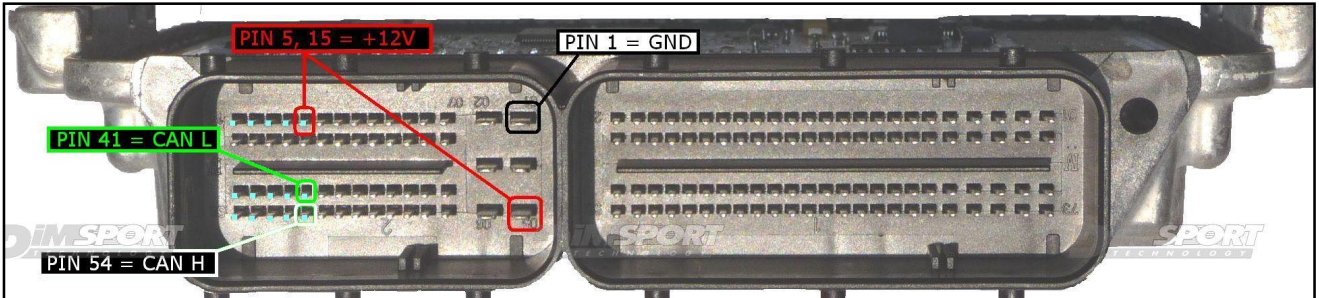
In order to connect to the ECU use the CABLE F32GN037C.
Make sure that the POWER led (red) on Trasdata is ON.

COLORE FILO WIRE COLOUR	DESCRIZIONE DESCRIPTION
ROSSO RED	POSITIVO DIRETTO POWER BATTERY
ARANCIO ORANGE	POSITIVO SOTTO QUADRO POWER SWITCH ON
NERO BLACK	MASSA GND
GIALLO YELLOW	KLINE
VERDE GREEN	CAN LOW
BIANCO WHITE	CAN HIGH
GRIGIO GREY	POL4 BOOT
BLU BLUE	POL5 CNF1
VIOLA/GRIGIO PURPLE/GREY	TENSIONE PROG. PROG. VOLTAGE
MARRONE BROWN	RESET



BOSCH MED172 IROM TC1767 FORD

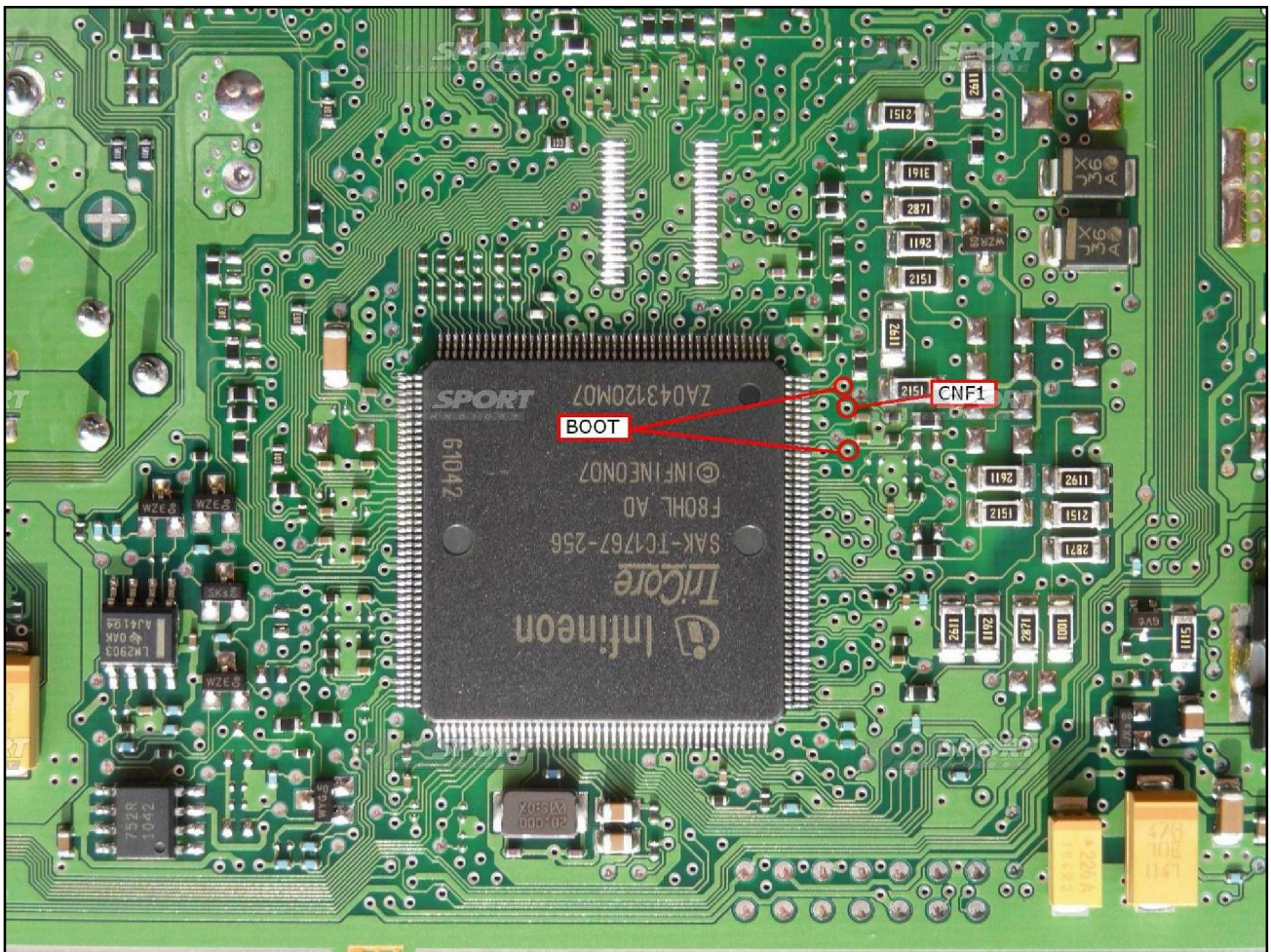
ECU CONNECTOR



BOOT & CNF1 CONNECTION

COLORE FILO WIRE COLOUR	DESCRIZIONE DESCRIPTION
GRIGIO GREY	POL4 BOOT
BLU BLUE	POL5 CNF1

Connect the GREY and BLUE wires of the cable F32GN037C as described here below :



BOSCH MED172 IROM TC1767 FORD

DIMA CONNECTION

Connect the 2 boot pin to the programming lay-by pin n. 10 then verify that the switch BOOT present on the F34DM011 is set in position ON. Moreover it is necessary to solder a third wire that must be connected to the CNF1 clamp on the DIMA F34DM011.

