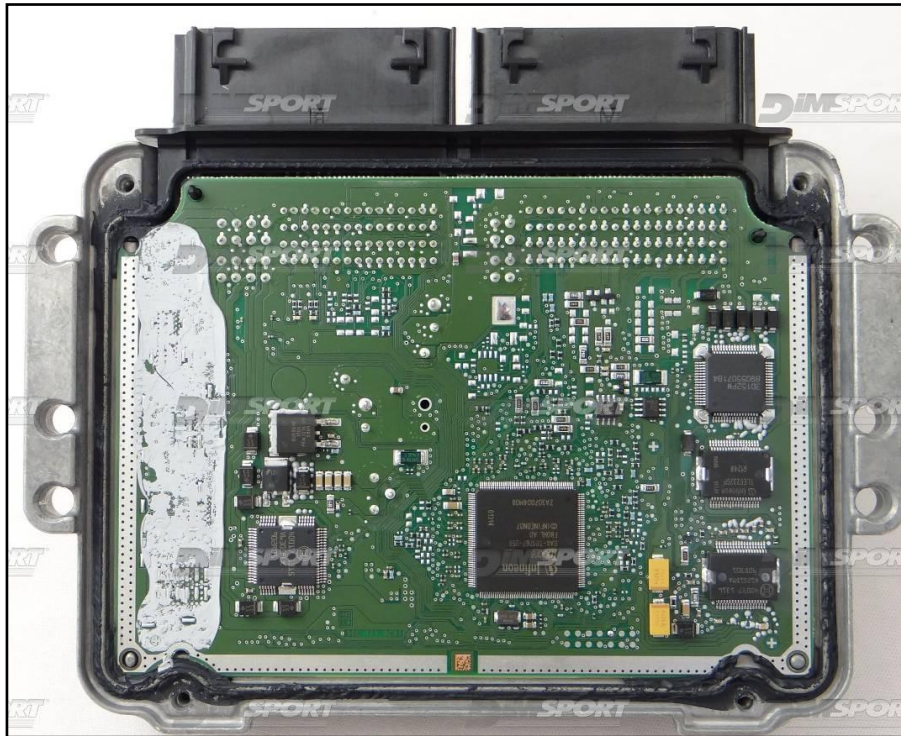


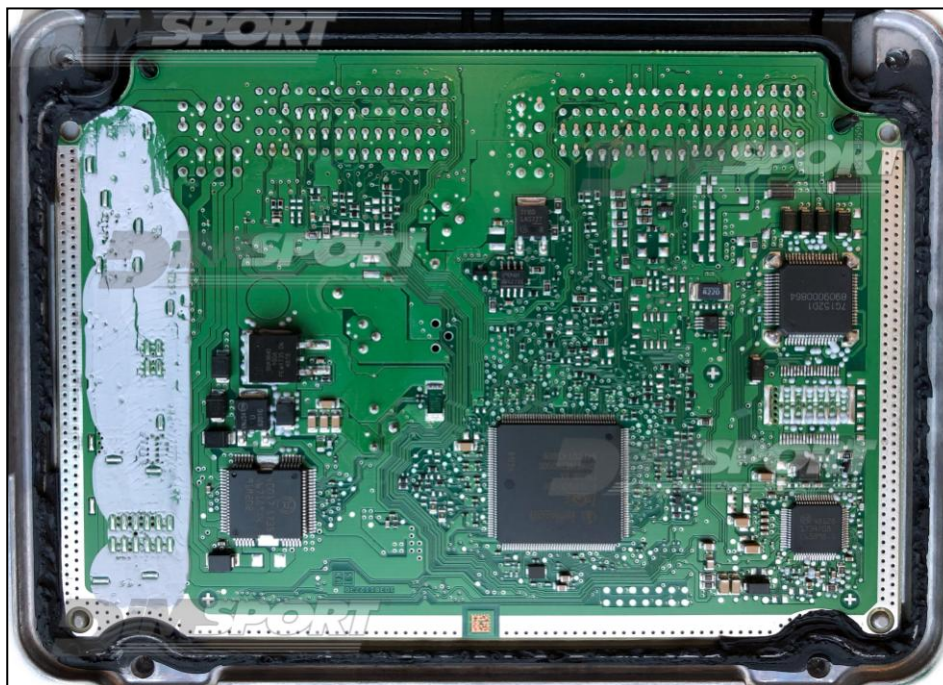
BOSCH MED172 IROM TC1767 TPROT12 FORD

Plugin 586 BOSCH MED172 IROM TC1767 TPROT12 FORD  
Plugin 1064 BOSCH MED1707 IROM TC1782 TPROT12 FORD  
Plugin 831 BOSCH MED172 IROM TC1767 FORD

BOSCH MED172 TC1767



BOSCH MED1707 TC1782



## BOSCH MED172 IROM TC1767 TPROT12 FORD

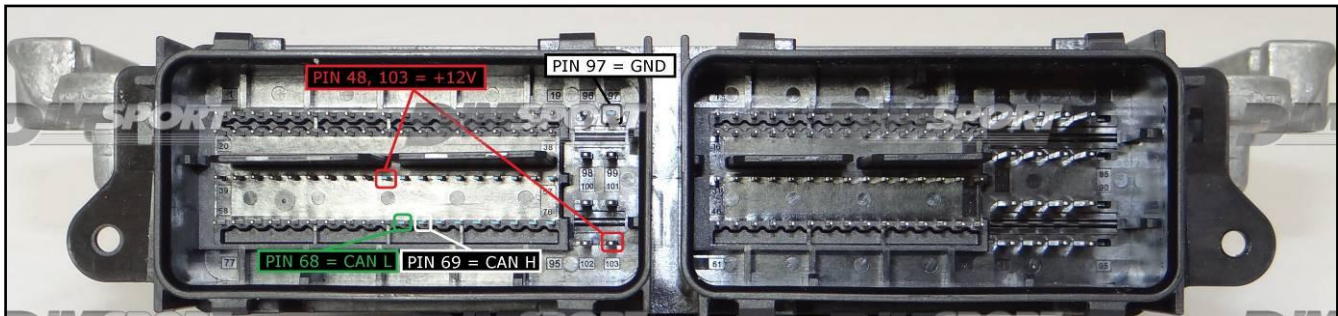
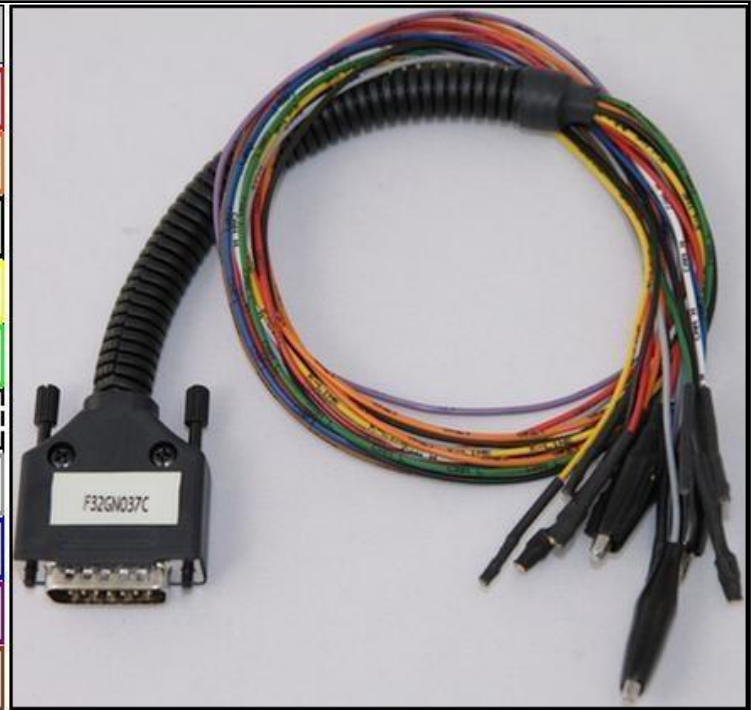
### ECU CONNECTOR

In order to connect to the ECU use the CABLE F32GN037C/D.

Make sure that the POWER led (red) on Trasdata is ON.

On this ECU it is possible **ONLY the direct connection**, it is NOT possible to use the METAL POSITIONING FRAME.

COLORE FILO WIRE COLOUR	DESCRIZIONE DESCRIPTION
<span style="color: red;">■</span> ROSSO RED	POSITIVO DIRETTO POWER BATTERY
<span style="color: orange;">■</span> ARANCIO ORANGE	POSITIVO SOTTO QUADRO POWER SWITCH ON
<span style="color: black;">■</span> NERO BLACK	MASSA GND
<span style="color: yellow;">■</span> GIALLO YELLOW	KLINE
<span style="color: green;">■</span> VERDE GREEN	CAN LOW
<span style="color: white;">■</span> BIANCO WHITE	ICAN HIGH
<span style="color: grey;">■</span> GRIGIO GREY	POL4 BOOT
<span style="color: blue;">■</span> BLU BLUE	POL5 CNF1
<span style="color: purple;">■</span> VIOLA/GRIGIO PURPLE/GREY	TENSIONE PROG. PROG. VOLTAGE
<span style="color: brown;">■</span> MARRONE BROWN	RESET



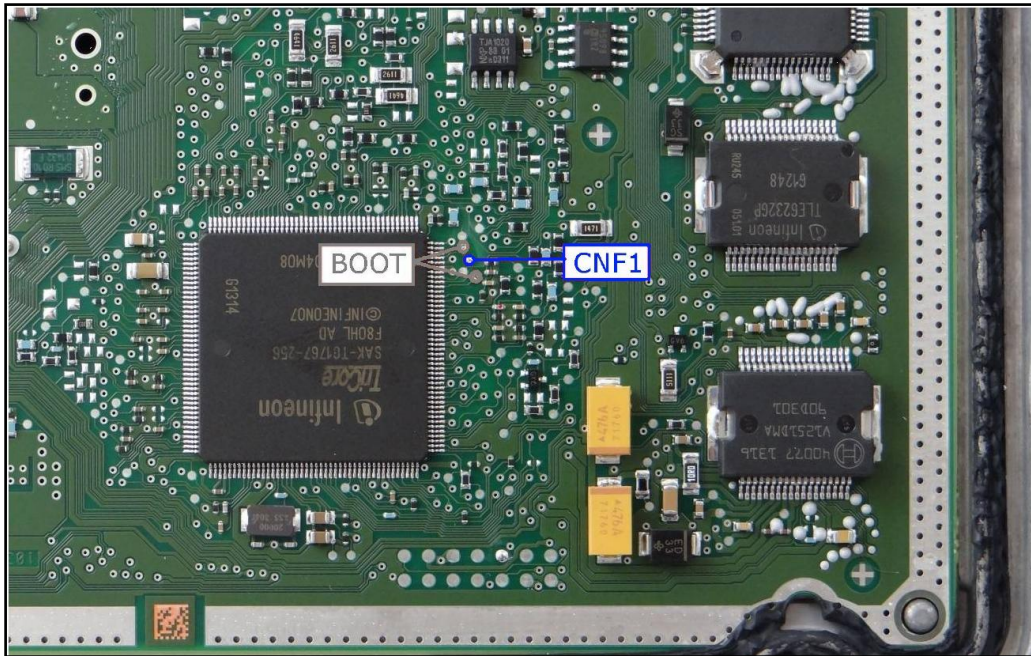
# BOSCH MED172 IROM TC1767 TPROT12 FORD

## BOOT/CNF1 DIRECT CONNECTION

Connect the BLUE and GREY wires of the cable F32GN037C/D as described:

COLORE FILO WIRE COLOUR	DESCRIZIONE DESCRIPTION
GRIGIO GREY	POL4 BOOT
BLU BLUE	POL5 CNF1

### BOSCH MED172 TC1767



### BOSCH MED1707 TC1782

