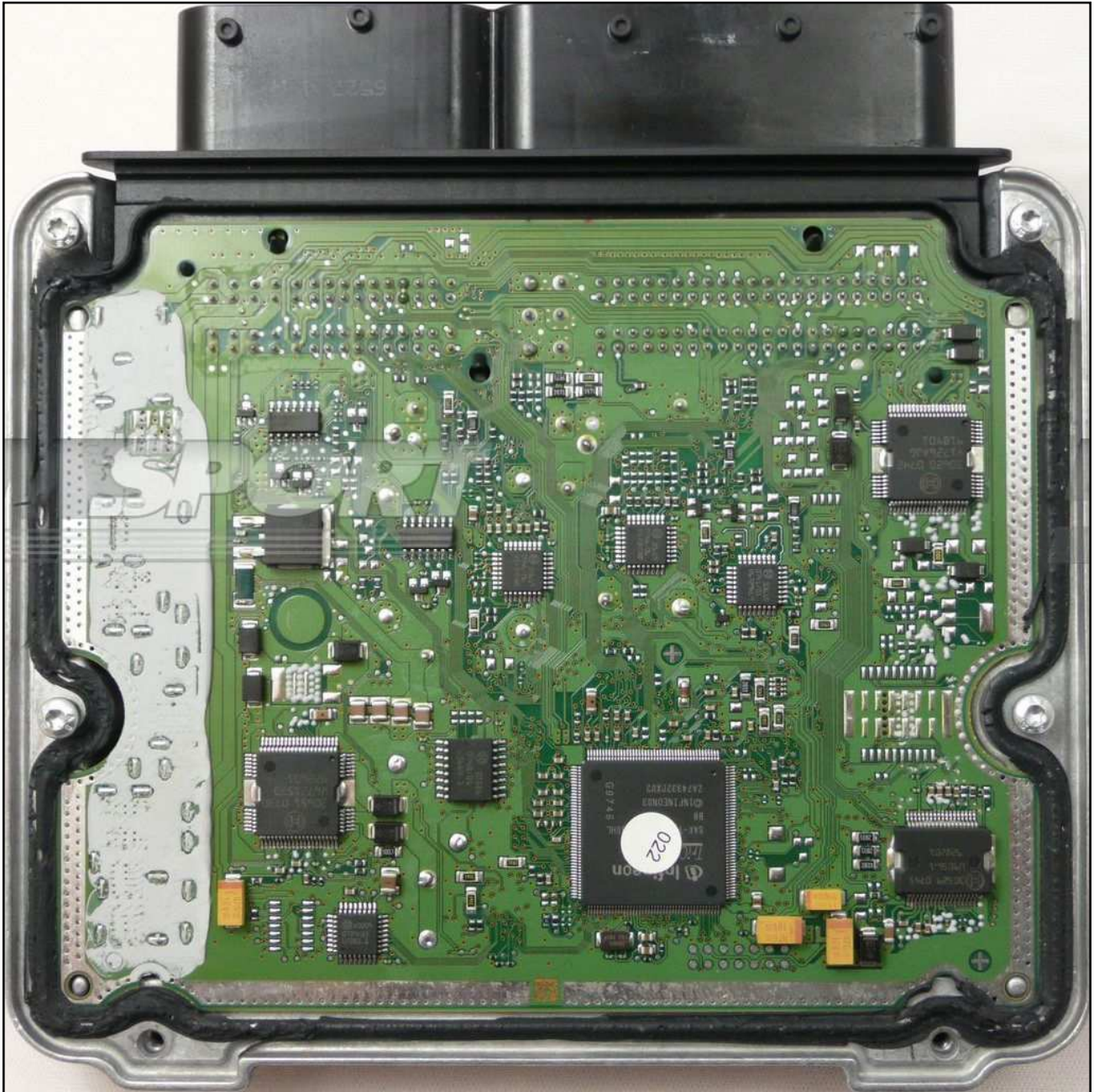


BOSCH MED17.5 IROM TC1766 VAG

plugin 128,267

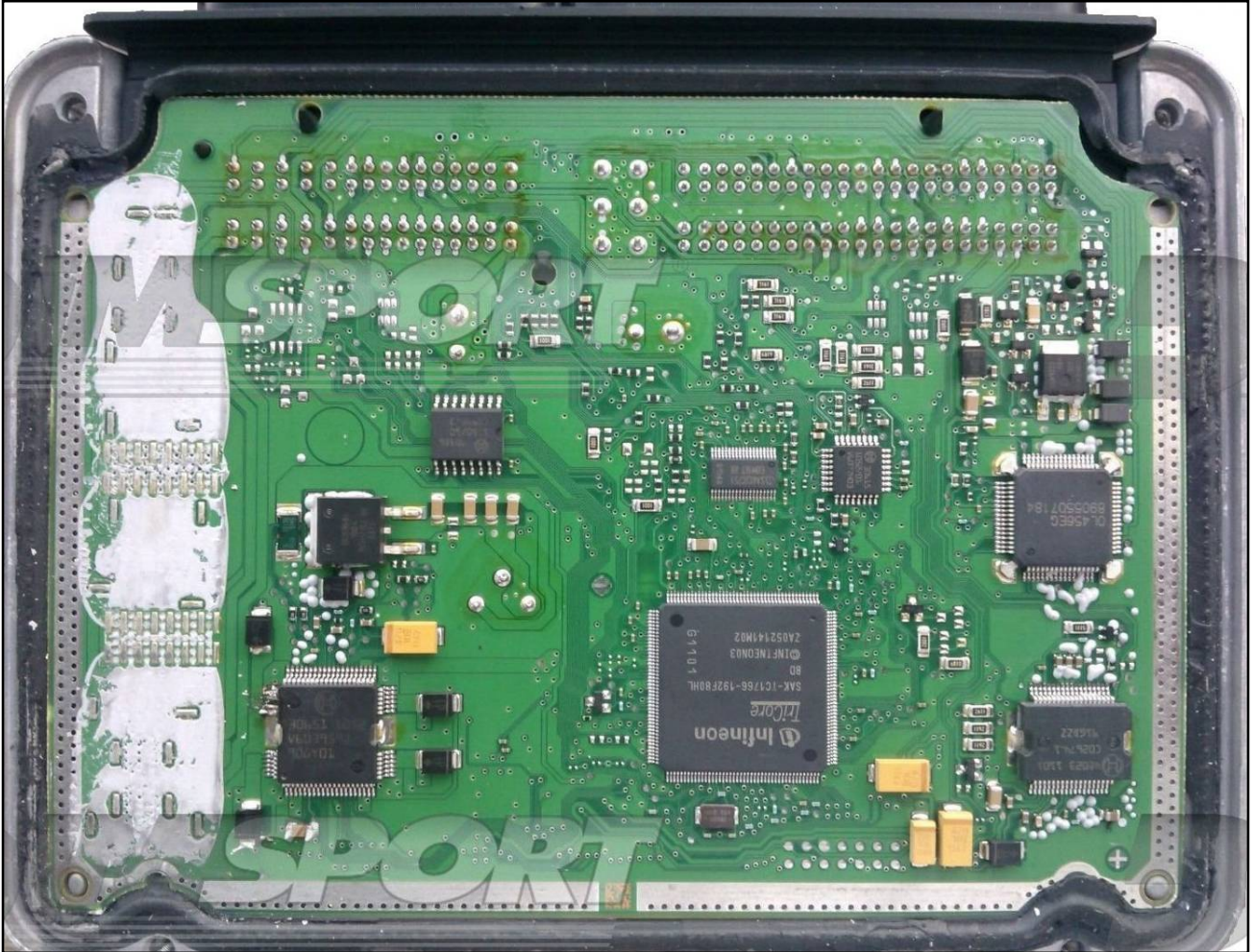
On this ECU it is possible ONLY the DIRECT connection. It is not possible to use the DIMA connection because the 3 required programming pads are missing.

1)MED17.5



BOSCH MED17.5 IROM TC1766 VAG

2)MED17.5.5

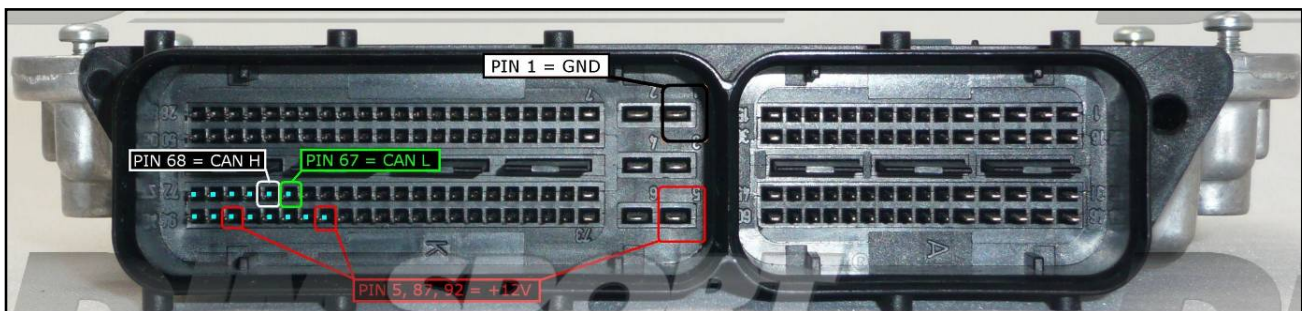


BOSCH MED17.5 IROM TC1766 VAG

ECU CONNECTOR

In order to connect to the ECU use the CABLE F32GN037C.
 Make sure that the POWER led (red) on Trasdata is ON.

COLORE FILO WIRE COLOUR	DESCRIZIONE DESCRIPTION
ROSSO RED	POSITIVO DIRETTO POWER BATTERY
ARANCIO ORANGE	POSITIVO SOTTO QUADRO POWER SWITCH ON
NERO BLACK	MASSA GND
GIALLO YELLOW	KLINE
VERDE GREEN	CAN LOW
BIANCO WHITE	CAN HIGH
GRIGIO GREY	POL4 BOOT
BLU BLUE	POL5 CNF1
VIOLA/GRIGIO PURPLE/GREY	TENSIONE PROG. PROG. VOLTAGE
MARRONE BROWN	RESET



To the 3 power feeding pins 5,87,92 you can connect both wires red and orange, they both have 12 Volt signal.

BOSCH MED17.5 IROM TC1766 VAG

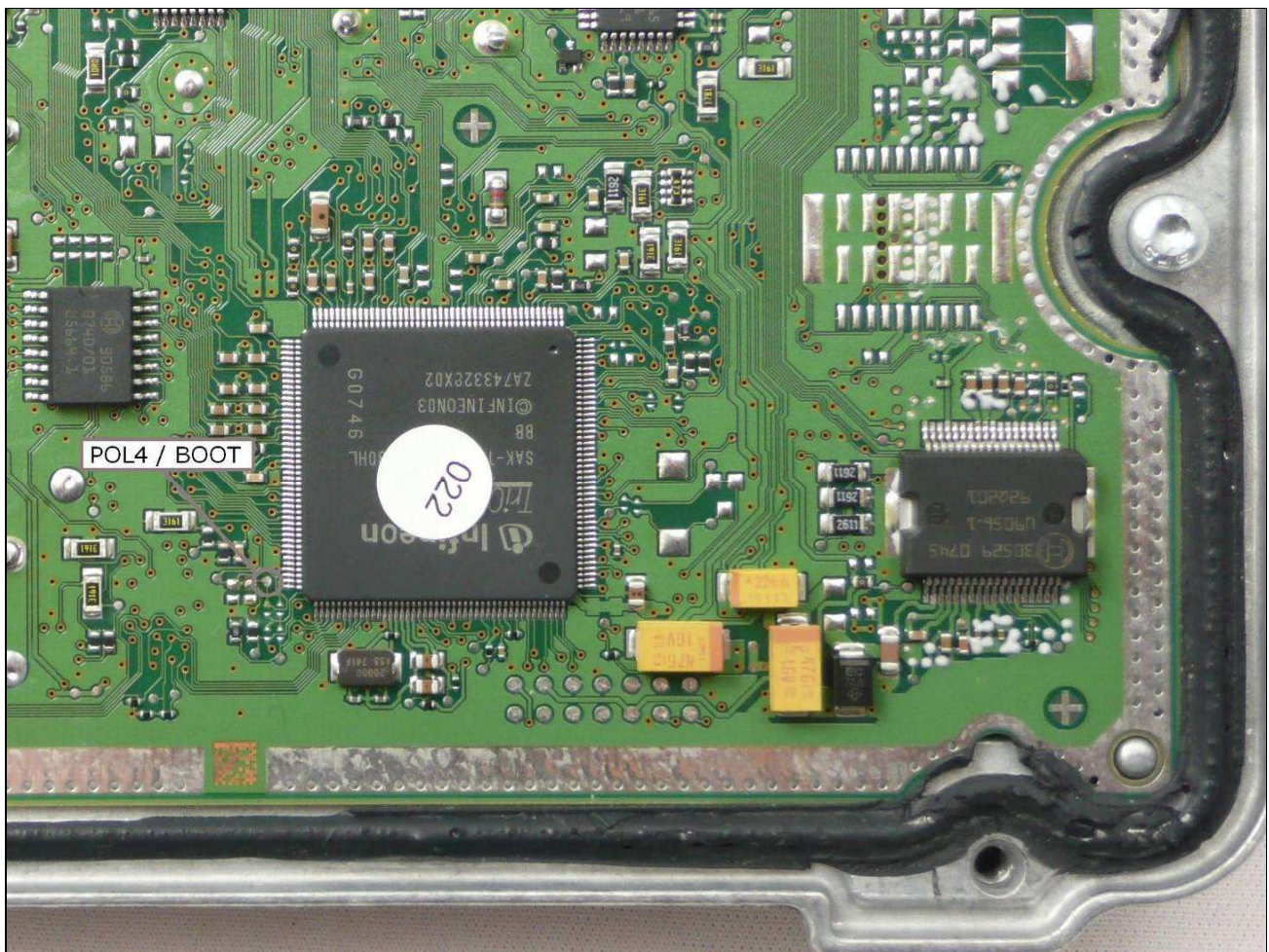
DIRECT CONNECTION

BOOT/POL4 CONNECTION

Connect the GREY wire of the cable F32GN037C as described here below :

COLORE FILO WIRE COLOUR	DESCRIZIONE DESCRIPTION
GRIGIO GREY	POL4 BOOT

1)MED17.5



BOSCH MED17.5 IROM TC1766 VAG

2)MED17.5

