

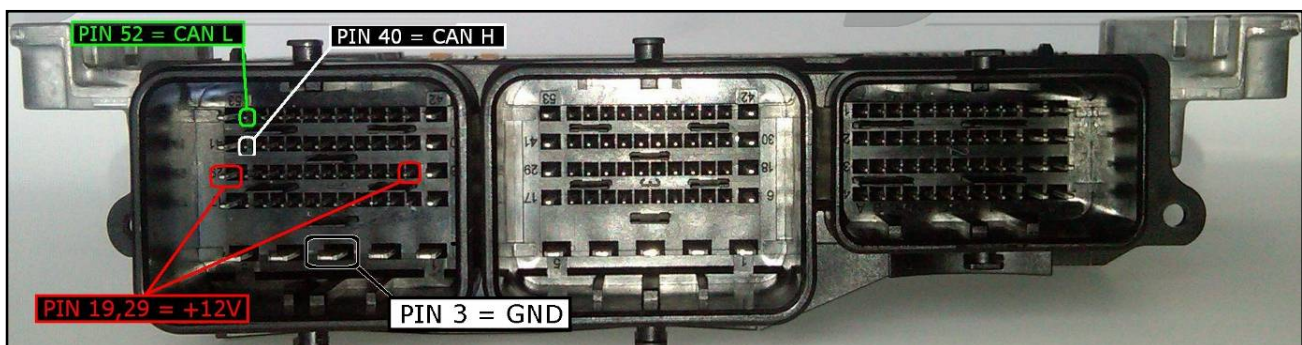
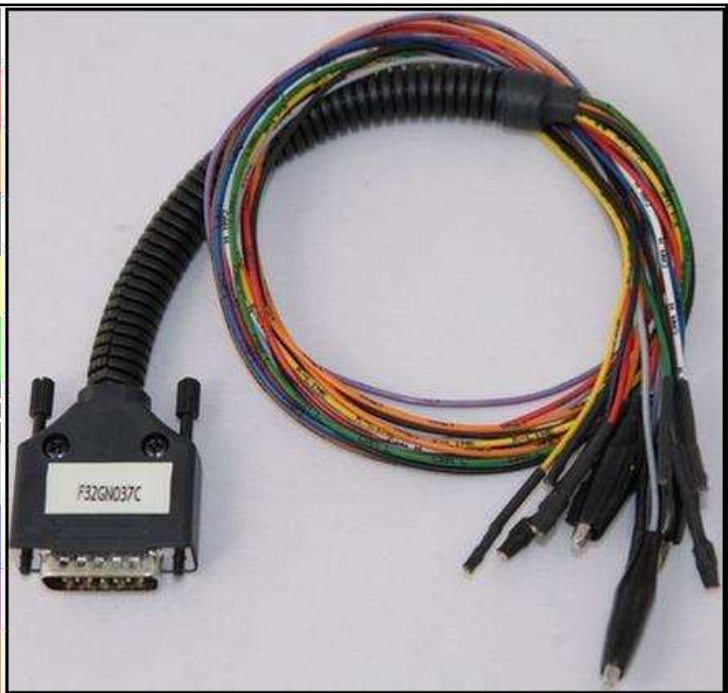
## BOSCH MEVD17.2.2 IROM TC1797 MINI

plugin 208,516

### DIRECT CONNECTION

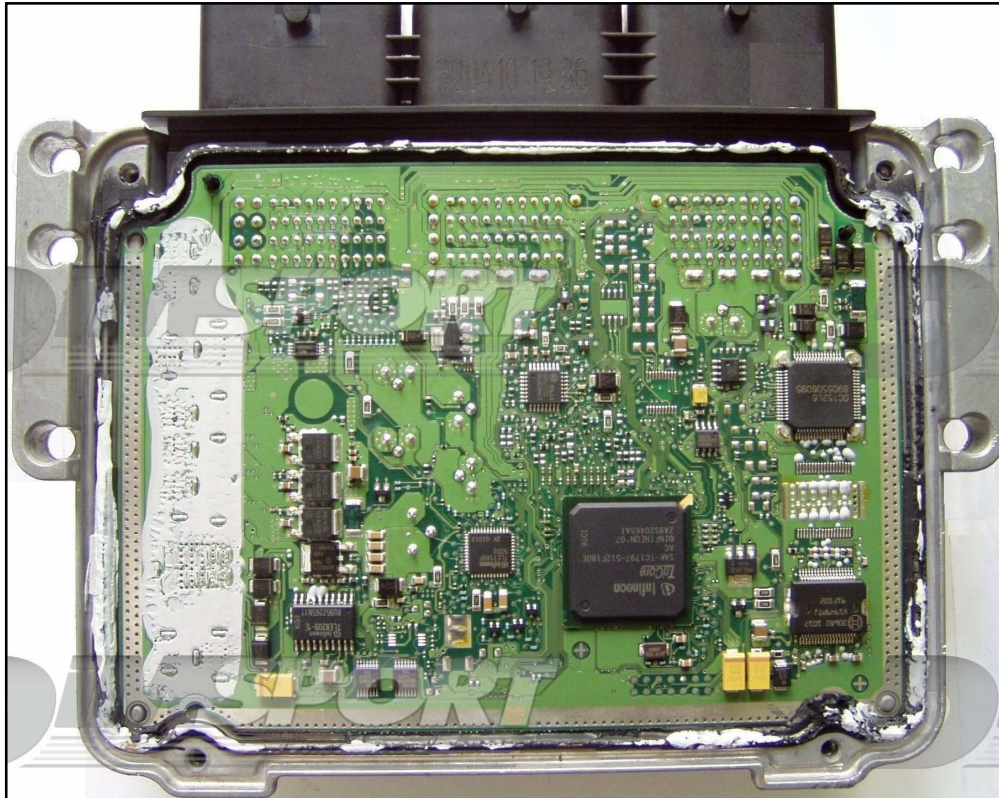
In order to connect to the ECU use the CABLE F32GN037C.  
Make sure that the POWER led (red) on Trasdata is ON.  
Do not use this connection with the DIMA.

COLORE FILO WIRE COLOUR	DESCRIZIONE DESCRIPTION
ROSSO RED	POSITIVO DIRETTO POWER BATTERY
ARANCIO ORANGE	POSITIVO SOTTO QUADRO POWER SWITCH ON
NERO BLACK	MASSA GND
GIALLO YELLOW	KLINE
VERDE GREEN	CAN LOW
BIANCO WHYTE	CAN HIGH
GRIGIO GREY	POL4 BOOT
BLU BLUE	POL5 CNF1
VIOLO/GRIGIO PURPLE/GREY	TENSIONE PROG. PROG. VOLTAGE
MARRONE GREY	RESET



BOSCH MEVD17.2.2 IROM TC1797 MINI

TYPE 01



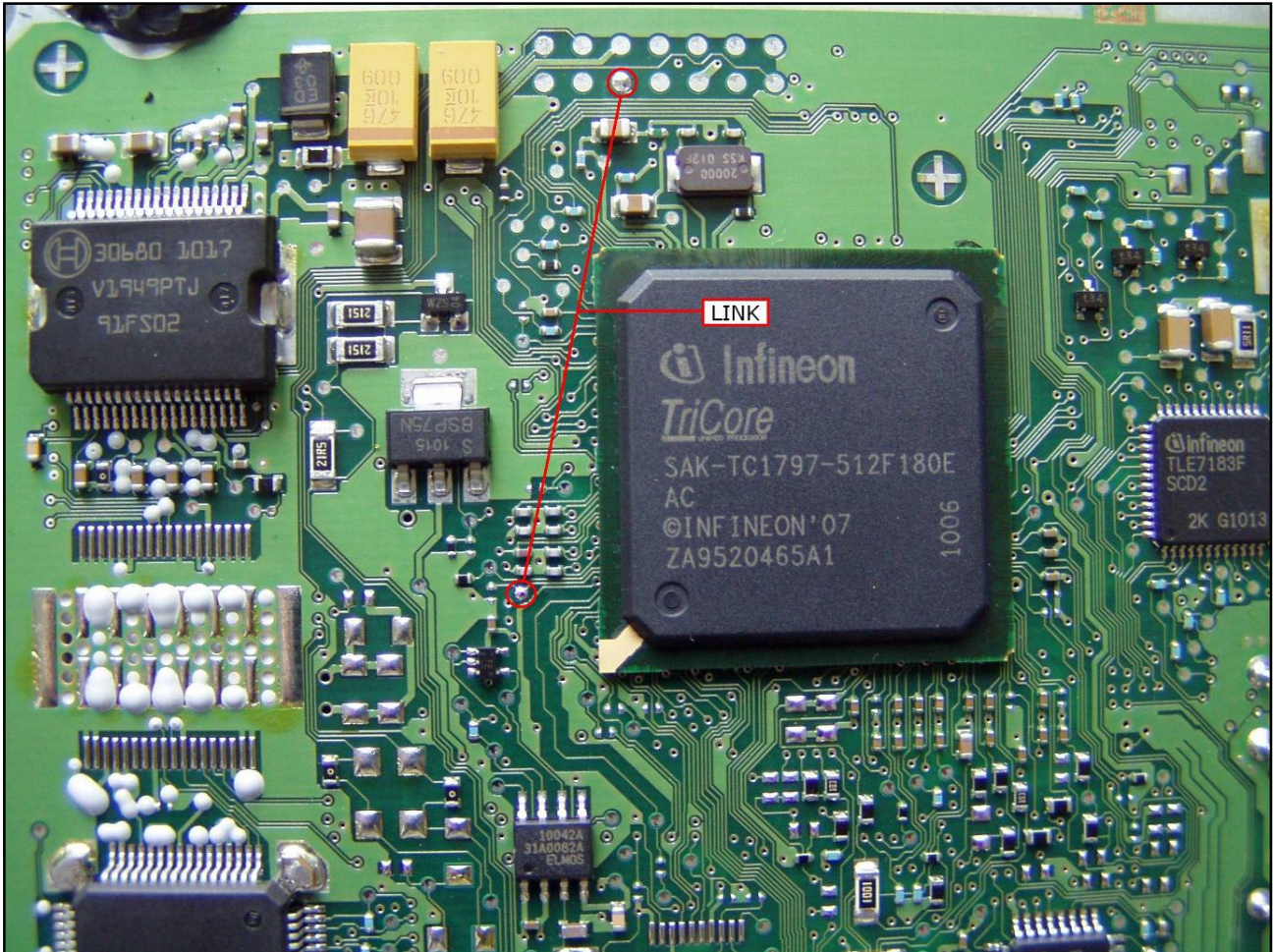
DIRECT CONNECTION



## BOSCH MEVD17.2.2 IROM TC1797 MINI

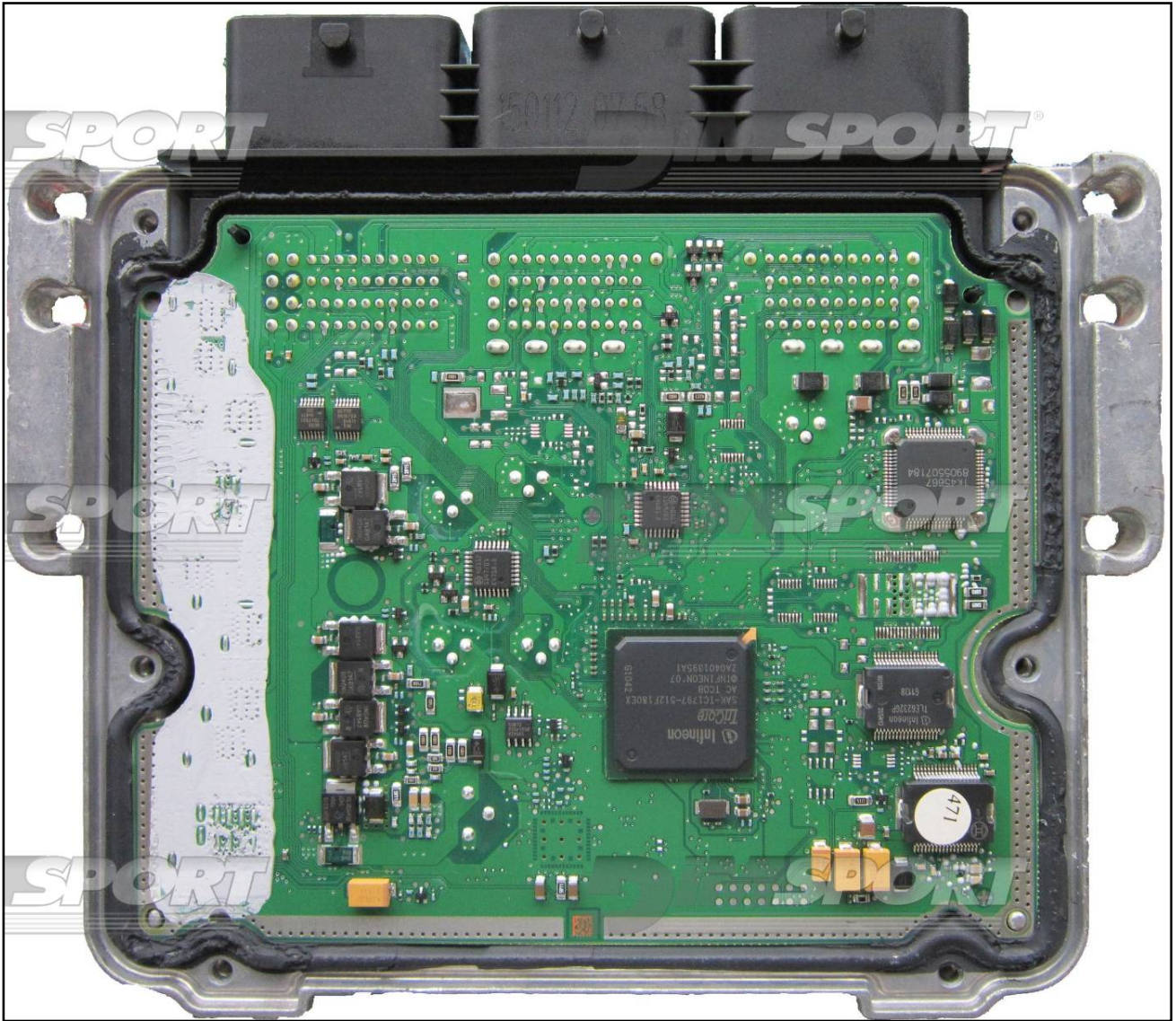
### DIMA CONNECTION

Connect the BOOT pin to the N 10 PAD of the lay-by pins.



BOSCH MEVD17.2.2 IROM TC1797 MINI

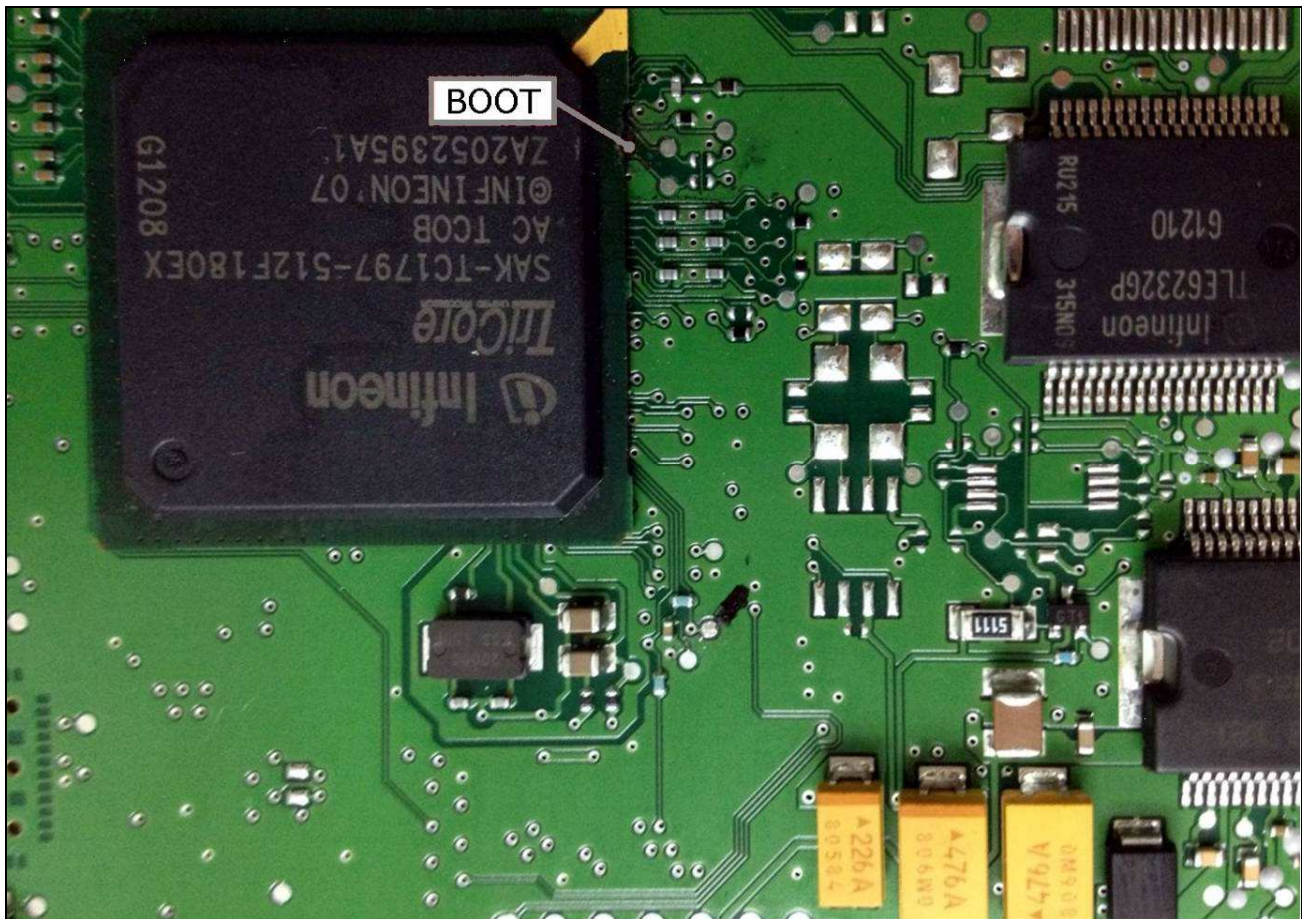
**TYPE 02**



## BOSCH MEVD17.2.2 IROM TC1797 MINI

### DIRECT CONNECTION

**WARNING:** the boot pin is placed under one side of the micro, be careful while soldering to avoid any damage to the microprocessor.



## BOSCH MEVD17.2.2 IROM TC1797 MINI

### DIMA CONNECTION

Connect the BOOT pin to the N 10 PAD of the lay-by pins.

