

## BOSCH MEVD1728 IROM TC1797 GPT BMW

plugin 679 BOSCH MEDV1725/MEVD1728/MEDV1729 TC1797 GPT  
BMW

plugin 879 BOSCH MEVD17.2.9 IROM TC1797 GPT BMW

**WARNING:** before extracting the ECU from the car mark the position of each connector.  
When you set back the ECU into the vehicle make sure that all the connectors are  
plugged in the correct position.

### GPT CONNECTION MODE

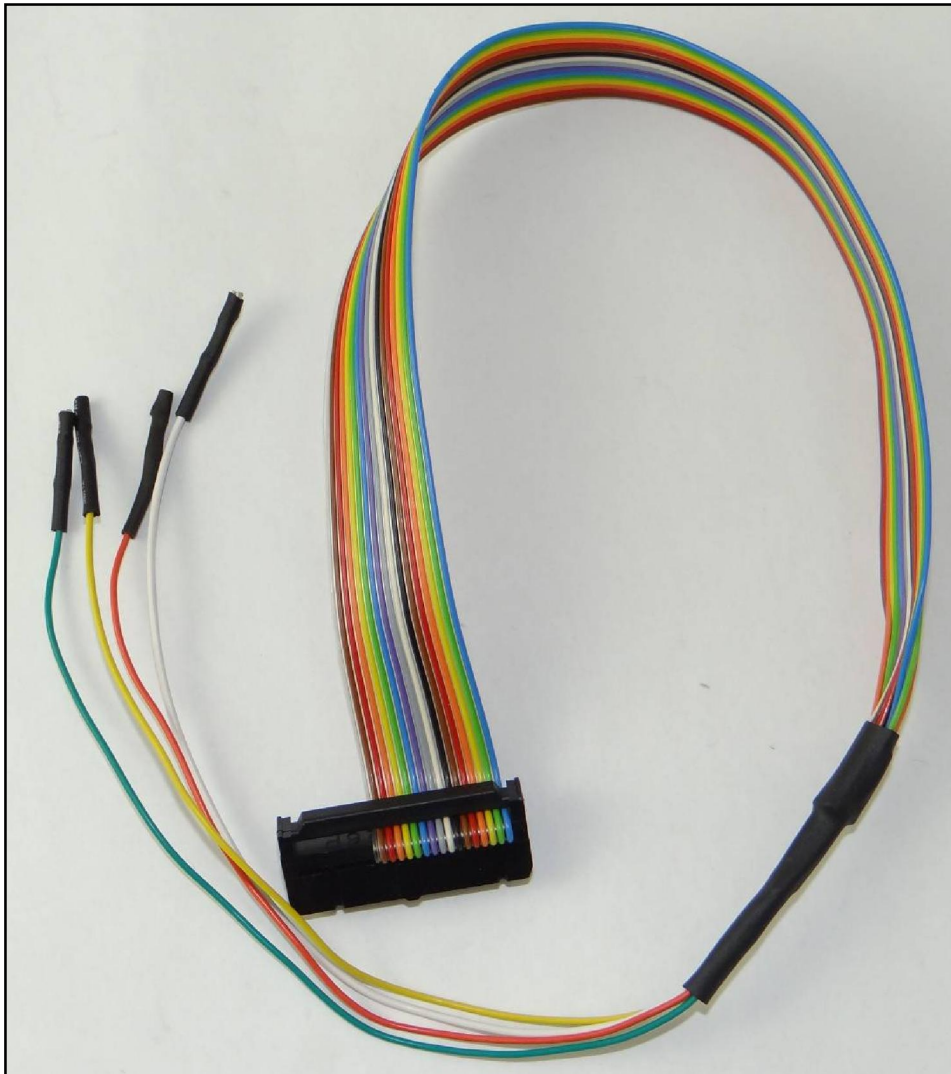
To perform the GPT connection it is necessary to use both the ANALOG PORT and the DIGITAL PORT.

#### GPT connection with loose wires

Connect the F32GN037 cable to the **ANALOG PORT**

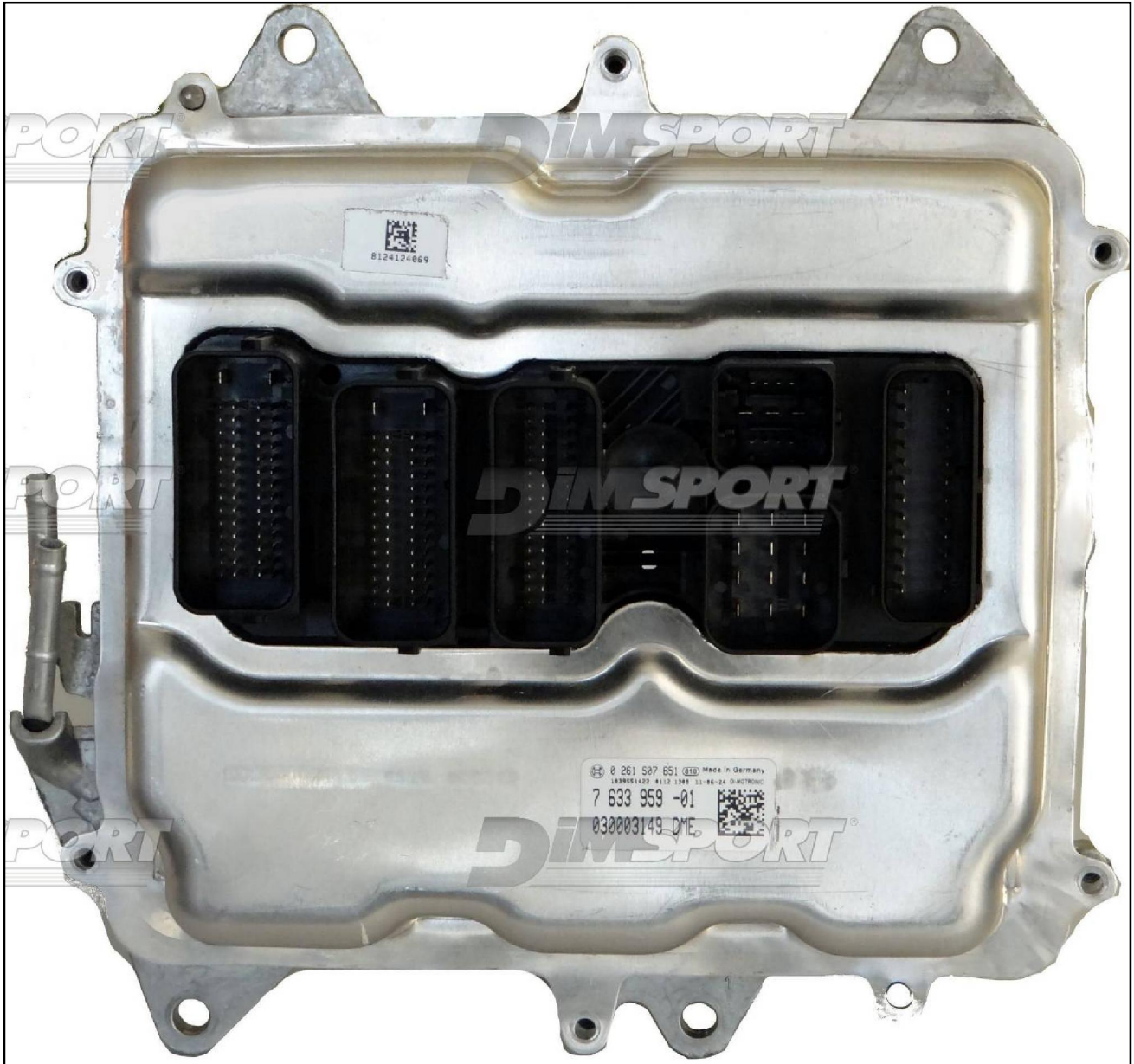
Connect the F34NTA15 to the **DIGITAL PORT**, use the YELLOW and ORANGE wires ONLY for the GPT signals, the WHITE and GREEN wires are for the second CAN line as displayed in the following pictures.

#### F34NTA15

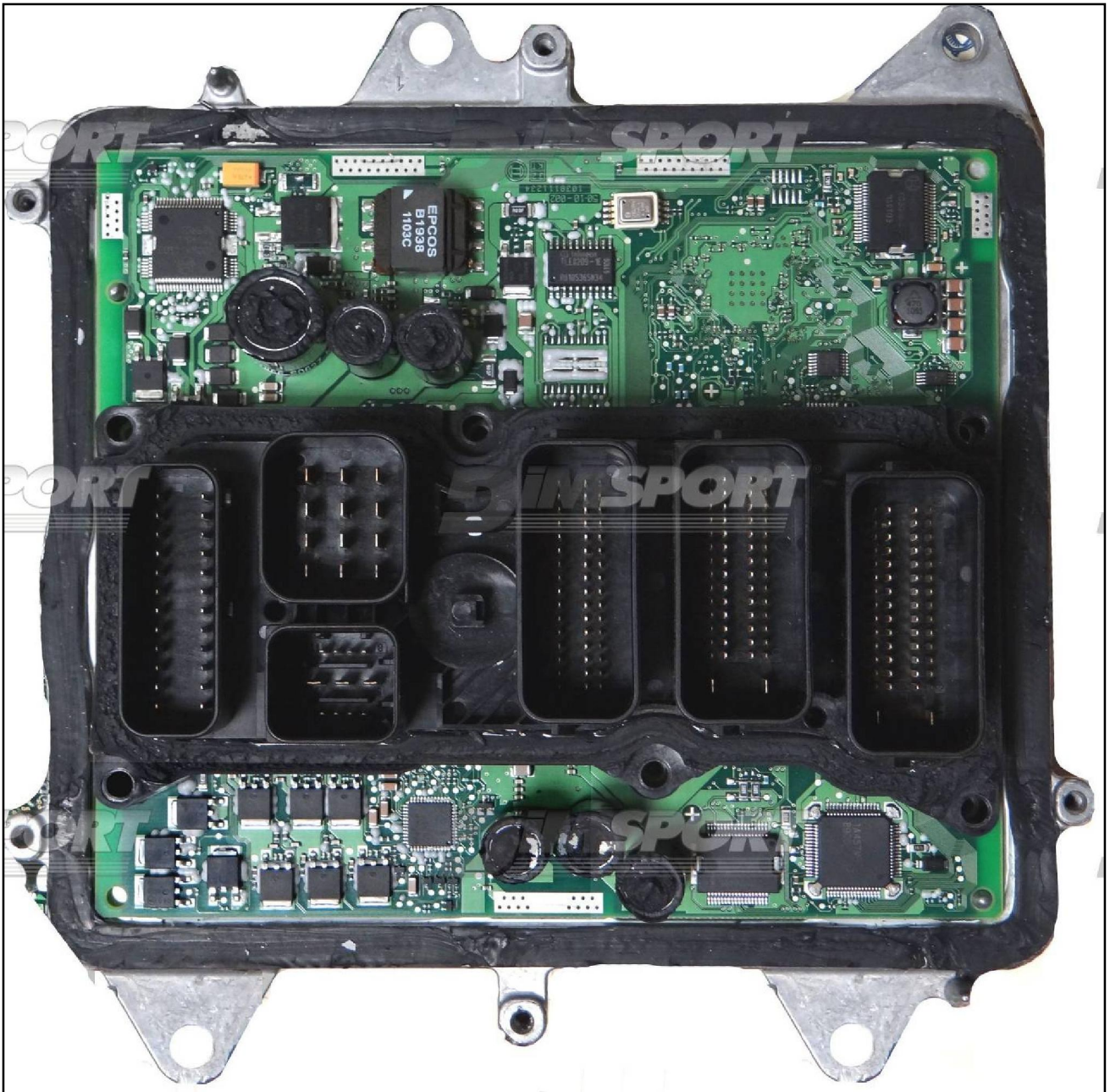


BOSCH MEVD1728 IROM TC1797 GPT BMW

MEVD1728



BOSCH MEVD1728 IROM TC1797 GPT BMW



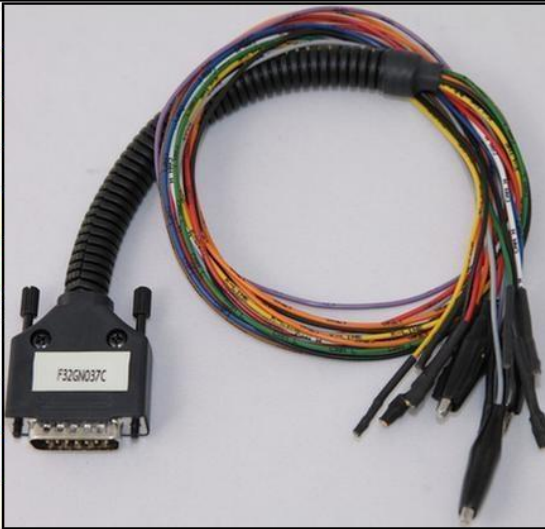
## BOSCH MEVD1728 IROM TC1797 GPT BMW

### ECU CONNECTOR

For the connection use the cable F32GN037C connected to the ECU.  
Make sure that the POWER led (red) on Trasdata is ON.

**Warning:** to connect the second CAN line use the WHITE and GREEN wires of the F34NTA15 flat cable.

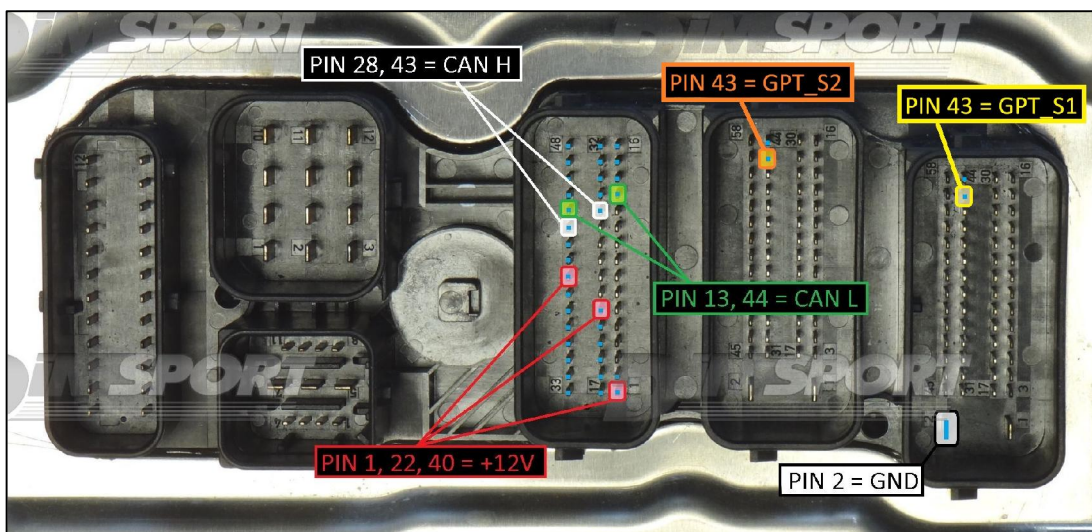
COLORE FILO WIRE COLOUR	DESCRIZIONE DESCRIPTION
ROSSO RED	POSITIVO DIRETTO POWER BATTERY
ARANCIO ORANGE	POSITIVO SOTTO QUADRO POWER SWITCH ON
NERO BLACK	MASSA GND
GIALLO YELLOW	KLINE
VERDE GREEN	CAN LOW
BIANCO WHITE	CAN HIGH
GRIGIO GREY	POL4 BOOT
BLU BLUE	POL5 CNF1
VIOLA/GRIGIO PURPLE/GREY	TENSIONE PROG. PROG. VOLTAGE
MARRONE BROWN	RESET



### GPT DIRECT CONNECTION

GPT connection is required for the first time only, after the first ECU reading it is not necessary any longer. Connect the F34NTA15 flat cable to the GPT S1 & GPT S2 pins.

PIN / Colore PIN / Color	DESCRIZIONE DESCRIPTION
	GPT_S2
	GPT_S1



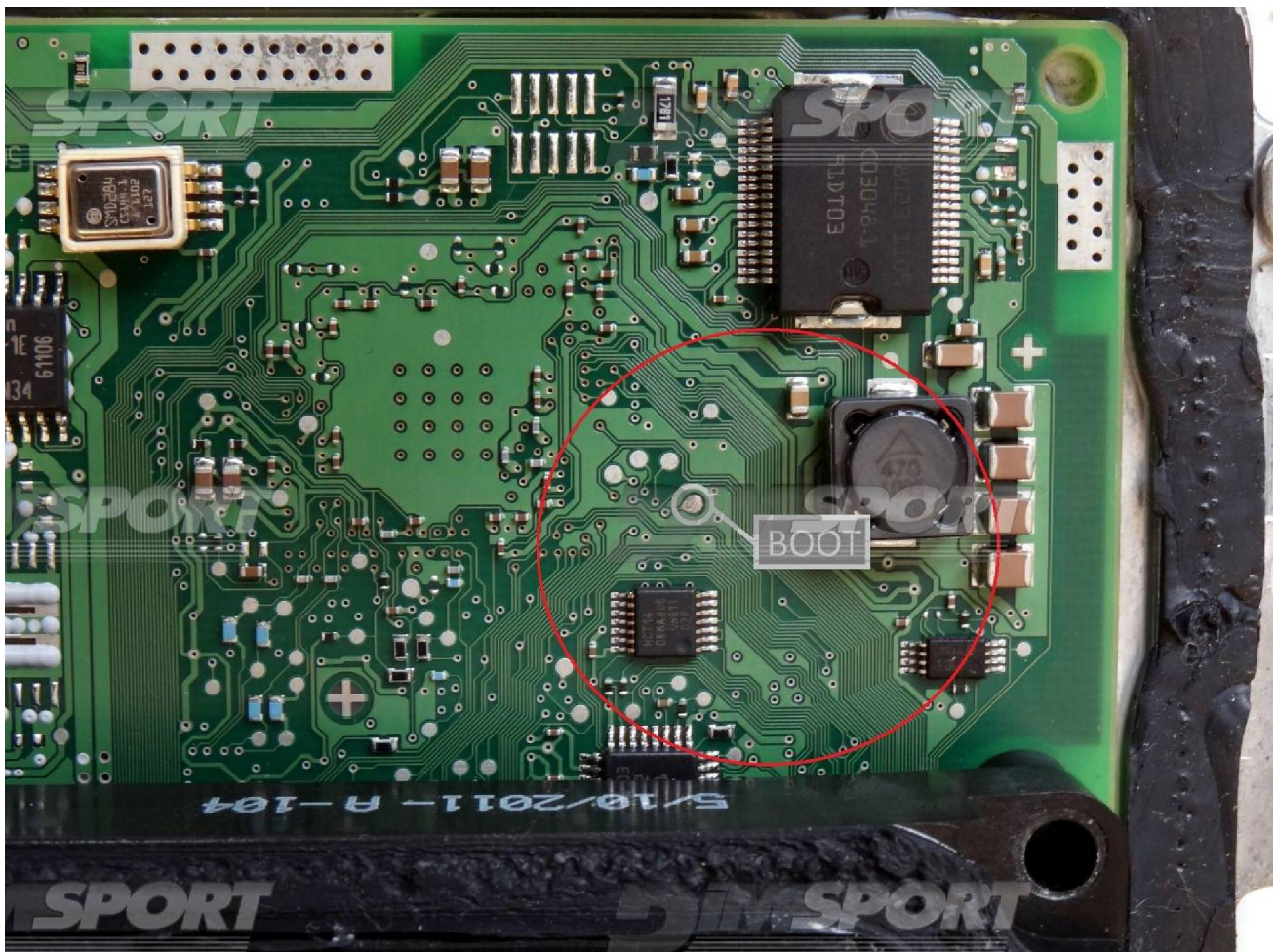
To the power feeding pins 1,22,40 (+12V) you can connect both wires red (VECU) and orange (VKEY) of the F32GN037C cable, they both have 12V signal.

## BOSCH MEVD1728 IROM TC1797 GPT BMW

### DIRECT BOOT CONNECTION

Connect the GREY wire of the cable F32GN037C as shown in the picture.

COLORE FILO WIRE COLOUR	DESCRIZIONE DESCRIPTION
GRIGIO	POL4
GREY	BOOT



BOSCH MEVD1728 IROM TC1797 GPT BMW

**BNP POSITIONING FRAME CONNECTION**

