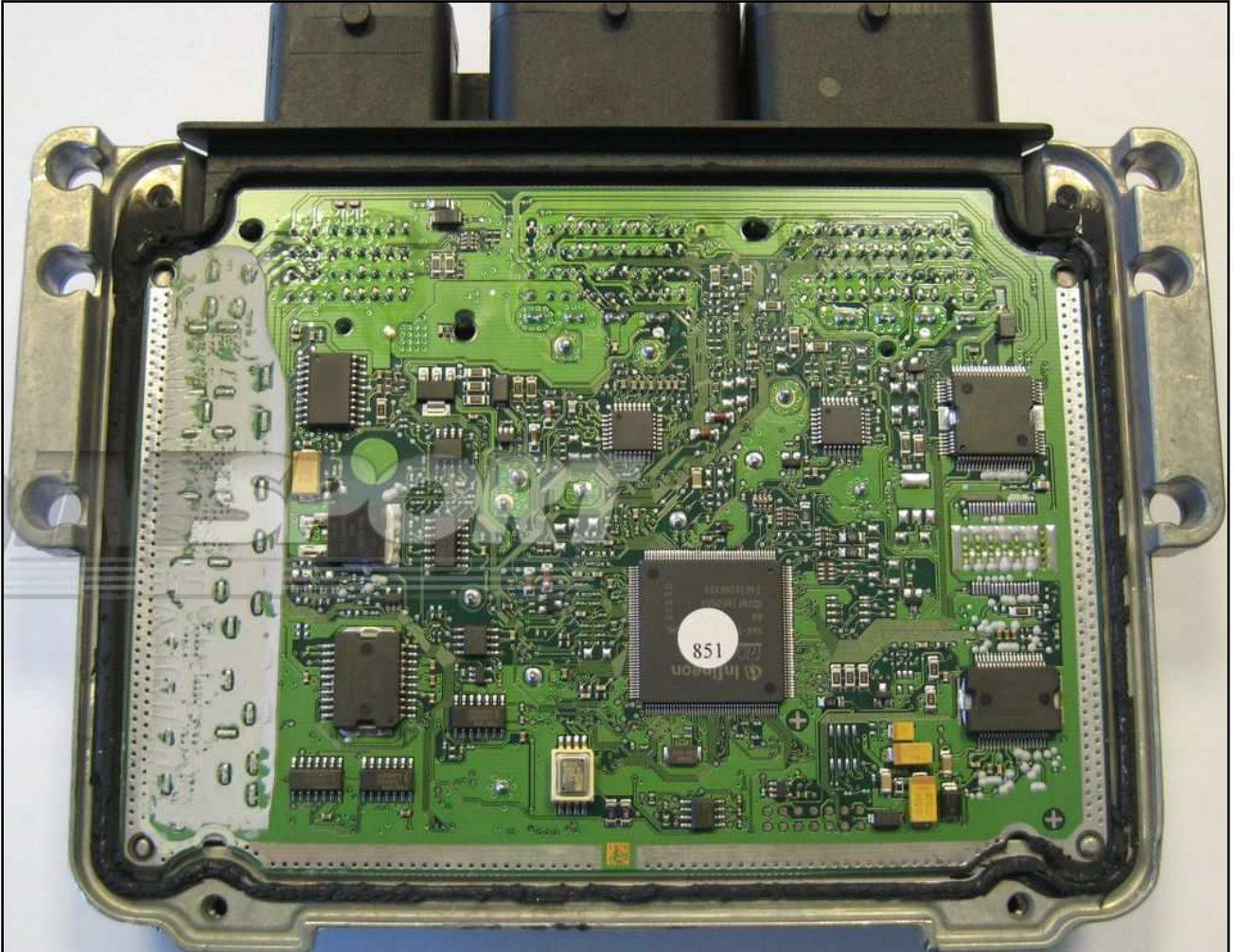


BOSCH MEDV174 IROM TC1766 PSA

plugin 196

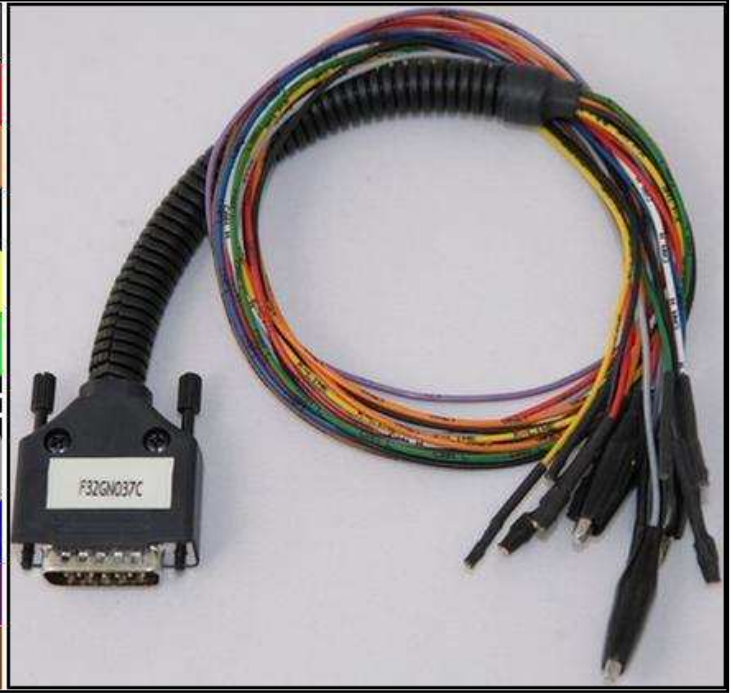


BOSCH MEDV174 IROM TC1766 PSA

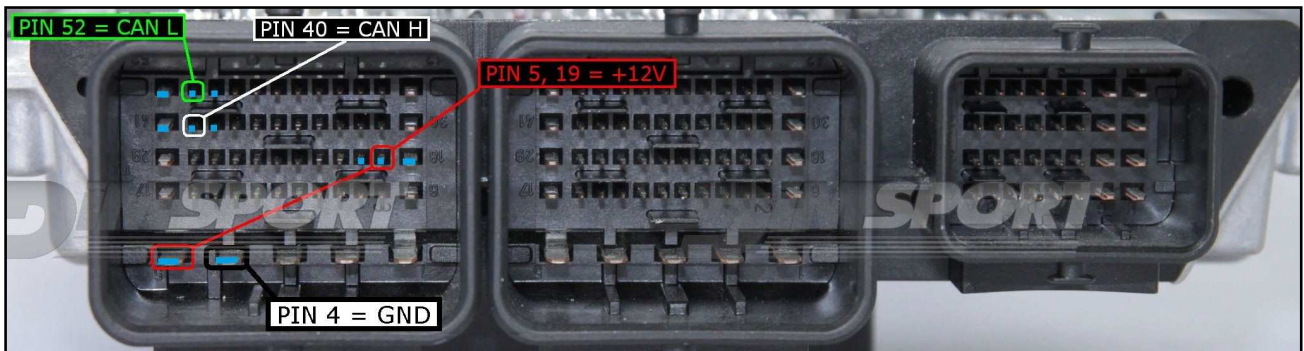
DIRECT CONNECTION

In order to connect to the ECU use the CABLE F32GN037C.
Make sure that the POWER led (red) on Trasdata is ON.
Do not use this connection with the DIMA.

COLORE FILO WIRE COLOUR	DESCRIZIONE DESCRIPTION
ROSSO RED	POSITIVO DIRETTO POWER BATTERY
ARANCIO ORANGE	POSITIVO SOTTO QUADRO POWER SWITCH ON
NERO BLACK	MASSA GND
GIALLO YELLOW	KLINE
VERDE GREEN	CAN LOW
BIANCO WHYTE	CAN HIGH
GRIGIO GREY	POL4 BOOT
BLU BLUE	POL5 CNF1
VIOLA/GRIGIO PURPLE/GREY	TENSIONE PROG. PROG. VOLTAGE
MARRONE GREY	RESET



ECU CONNECTOR



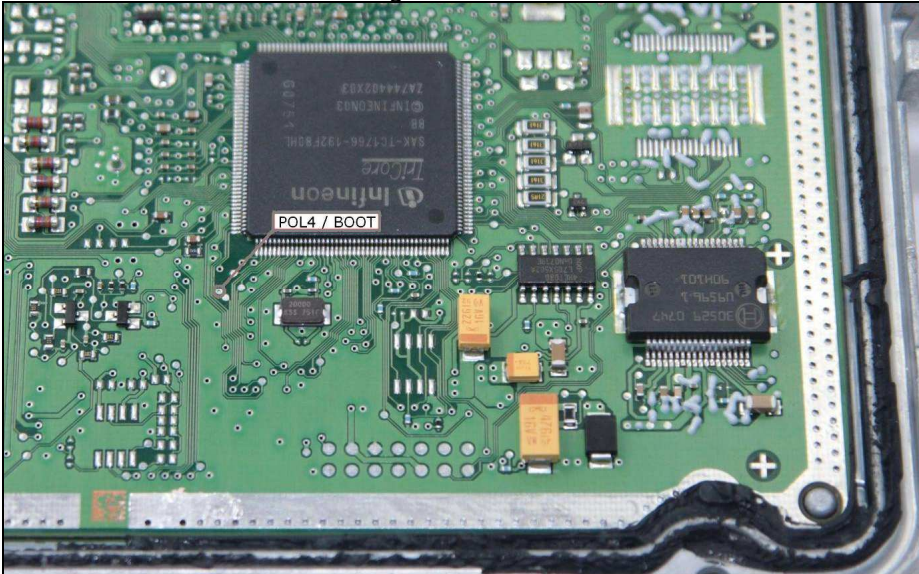
BOSCH MEDV174 IROM TC1766 PSA

DIRECT CONNECTION POL4

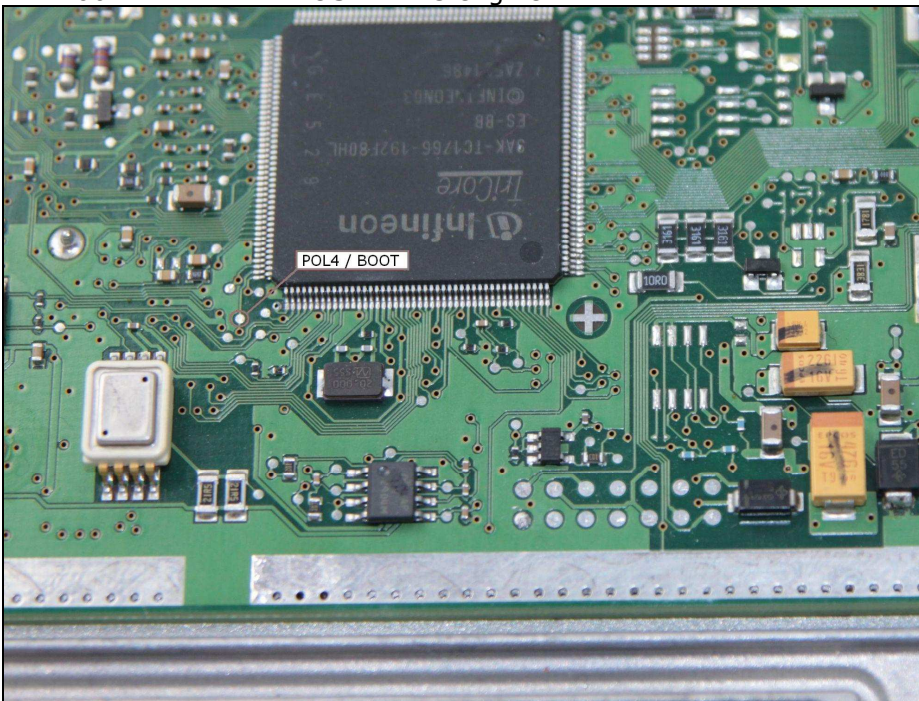
Connect the GREY wire of the cable F32GN037C as described here below :

COLORE FILO WIRE COLOUR	DESCRIZIONE DESCRIPTION
GRIGIO GREY	POL4 BOOT

TYPE 001 **MED**174 TURBO engine



TYPE 002 **MEV**174 ATMOSPHERIC engine

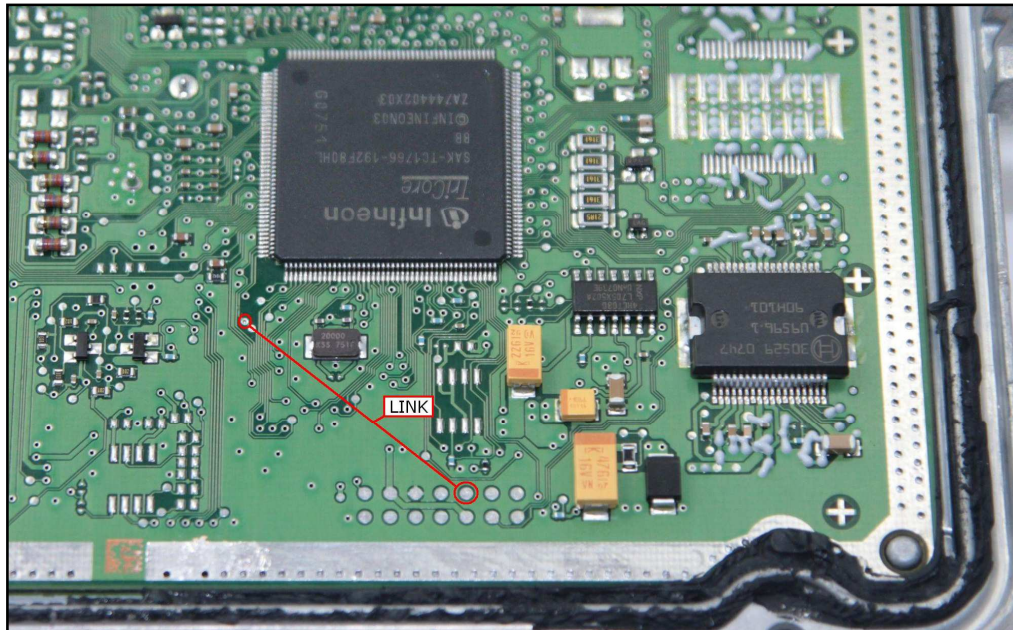


BOSCH MEDV174 IROM TC1766 PSA

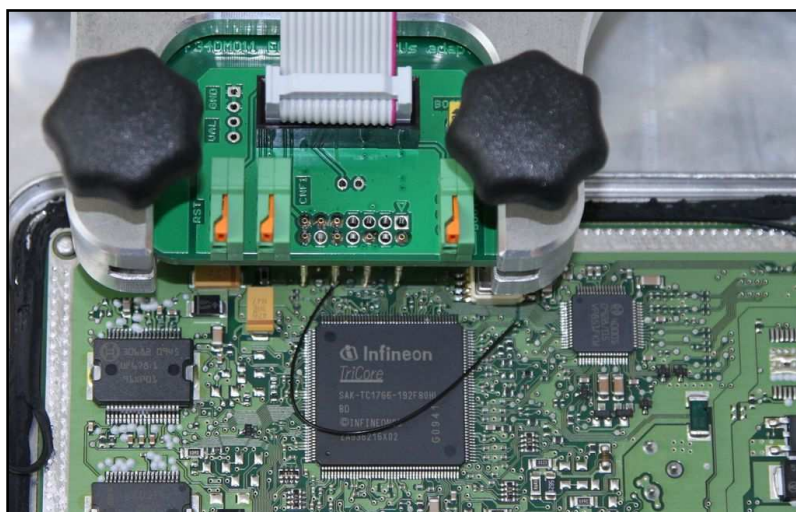
DIMA CONNECTION

TYPE 001 **MED**174 TURBO engine

Connect the boot pin to the pad n.10 of the soldering lay-by pins then verify that the switch BOOT present on the F34DM011 is set in position ON.



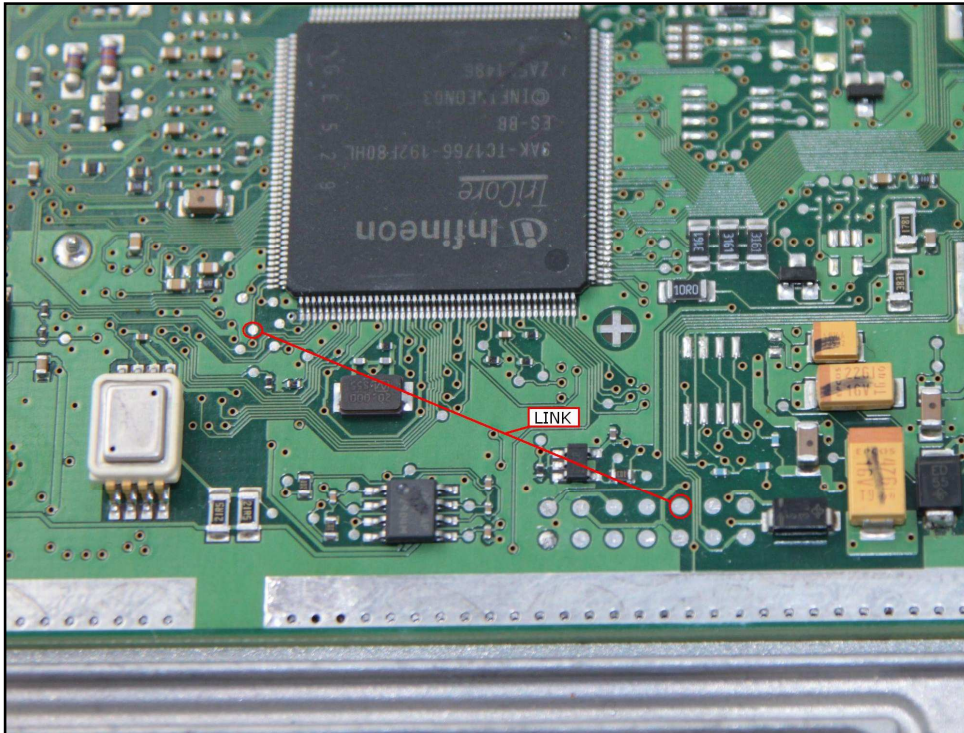
The following picture of the DIMA adapter F34DM011 connection is merely indicative.



BOSCH MEDV174 IROM TC1766 PSA

TYPE 002 **MEV**174 ATMOSPHERIC engine

Connect the boot pin to the pad n.10 of the soldering lay-by pins then verify that the switch BOOT present on the F34DM011 is set in position ON.



The following picture of the DIMA adapter F34DM011 connection is merely indicative.

