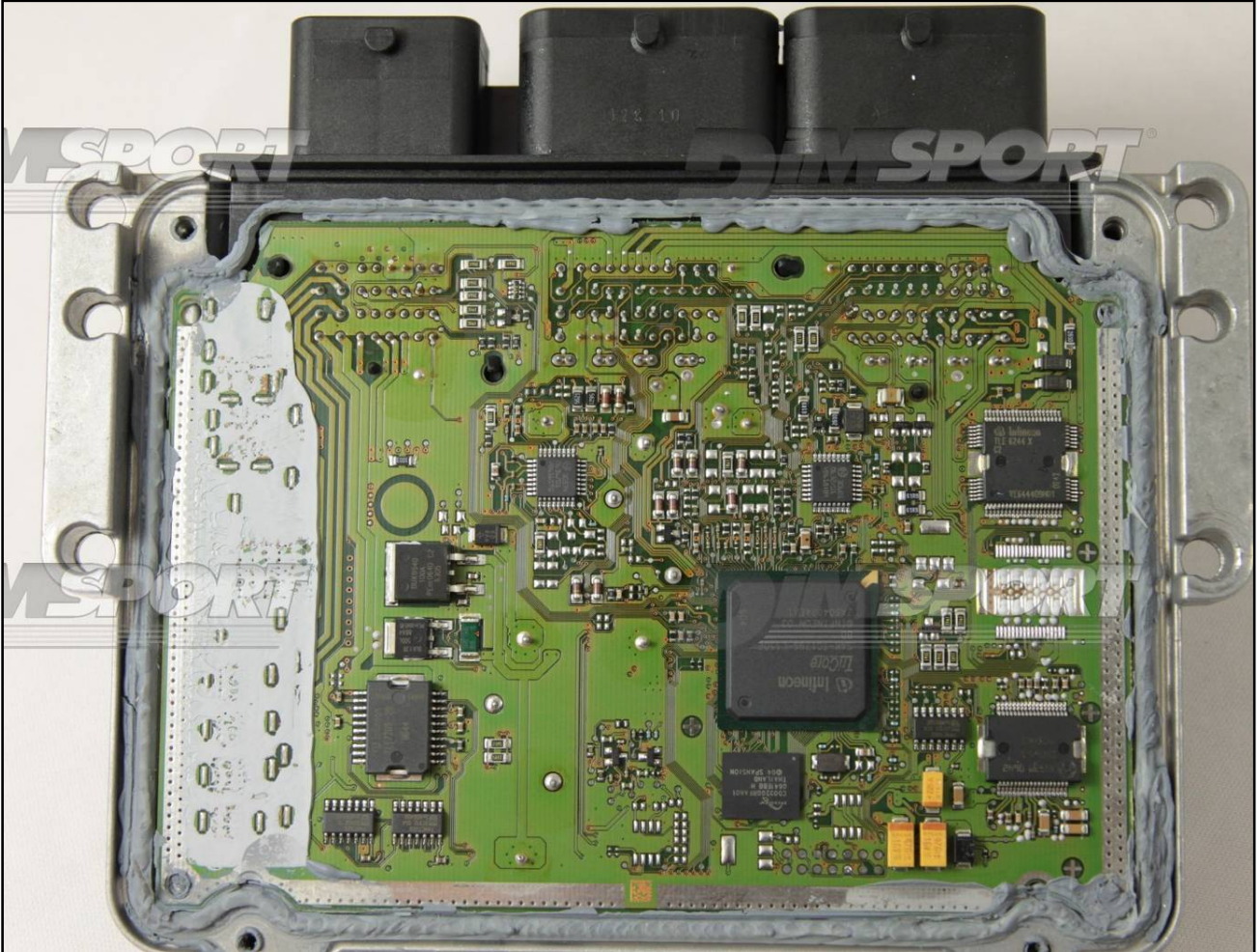


BOSCH MEDV174 XROM TC1796 PSA

plugin 209
MED174 (TURBO engine)

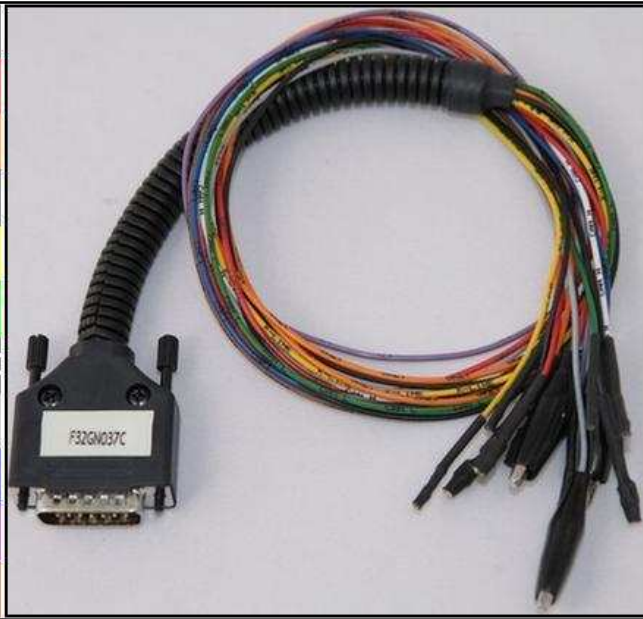


BOSCH MEDV174 XROM TC1796 PSA

ECU CONNECTOR

In order to connect to the ECU use the CABLE F32GN037C.
Make sure that the POWER led (red) on Trasdata is ON
Do NOT use this connection with the DIMA

COLORE FILO WIRE COLOUR	DESCRIZIONE DESCRIPTION
ROSSO RED	POSITIVO DIRETTO POWER BATTERY
ARANCIO ORANGE	POSITIVO SOTTO QUADRO POWER SWITCH ON
NERO BLACK	MASSA GND
GIALLO YELLOW	KLINE
VERDE GREEN	CAN LOW
BIANCO WHITE	CAN HIGH
GRIGIO GREY	POL4 BOOT
BLU BLUE	POL5 CNF1
VIOLA/GRIGIO PURPLE/GREY	TENSIONE PROG. PROG. VOLTAGE
MARRONE BROWN	RESET

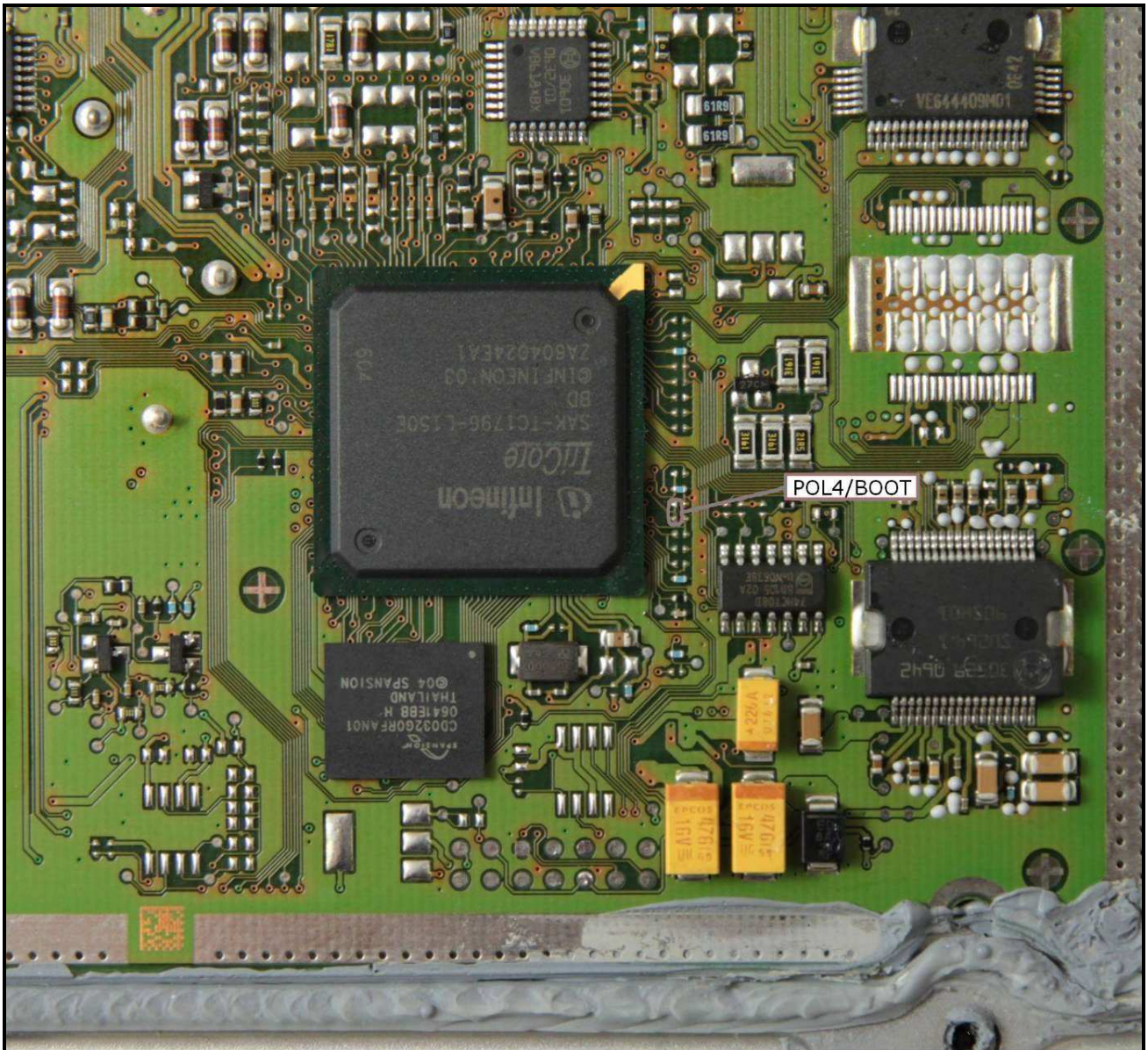


BOSCH MEDV174 XROM TC1796 PSA

POL4/BOOT DIRECT CONNECTION MED174 (TURBO engine)

Connect the GREY wire of the cable F32GN037C as described here below :

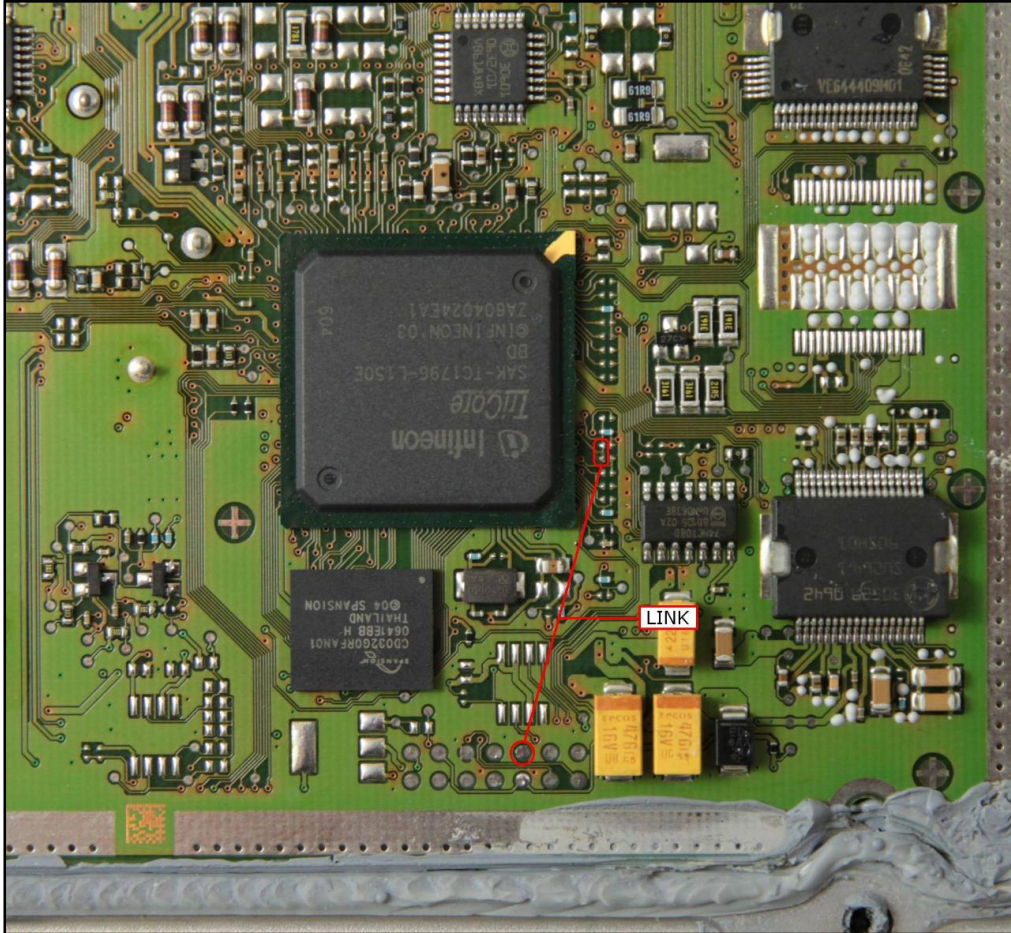
COLORE FILO WIRE COLOUR	DESCRIZIONE DESCRIPTION
GRIGIO GREY	POL4 BOOT



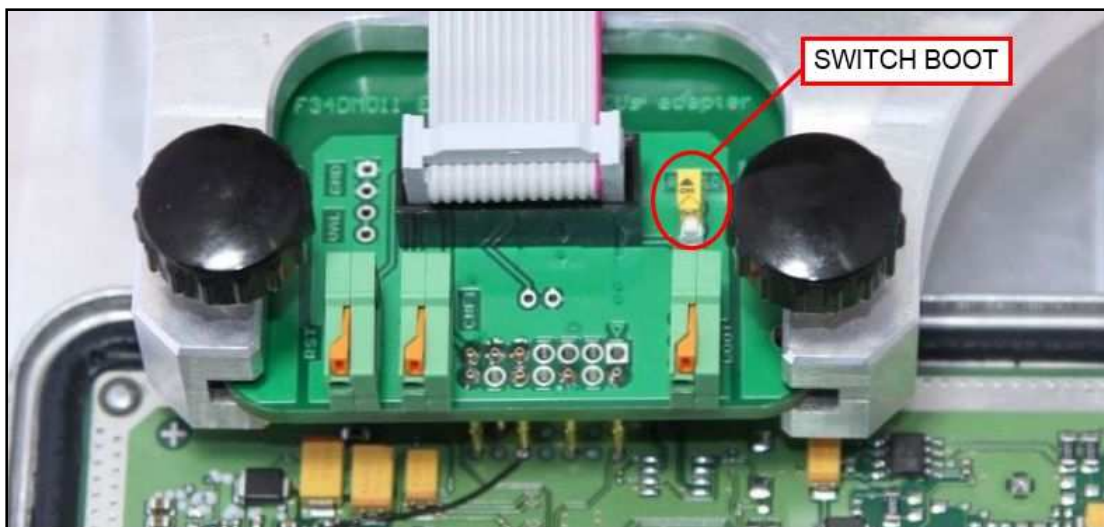
BOSCH MEDV174 XROM TC1796 PSA

DIMA CONNECTION MED174 (TURBO engine)

Connect the boot pin to the pad n.10 of the soldering lay-by pins then verify that the switch BOOT present on the F34DM011 is set in position ON.

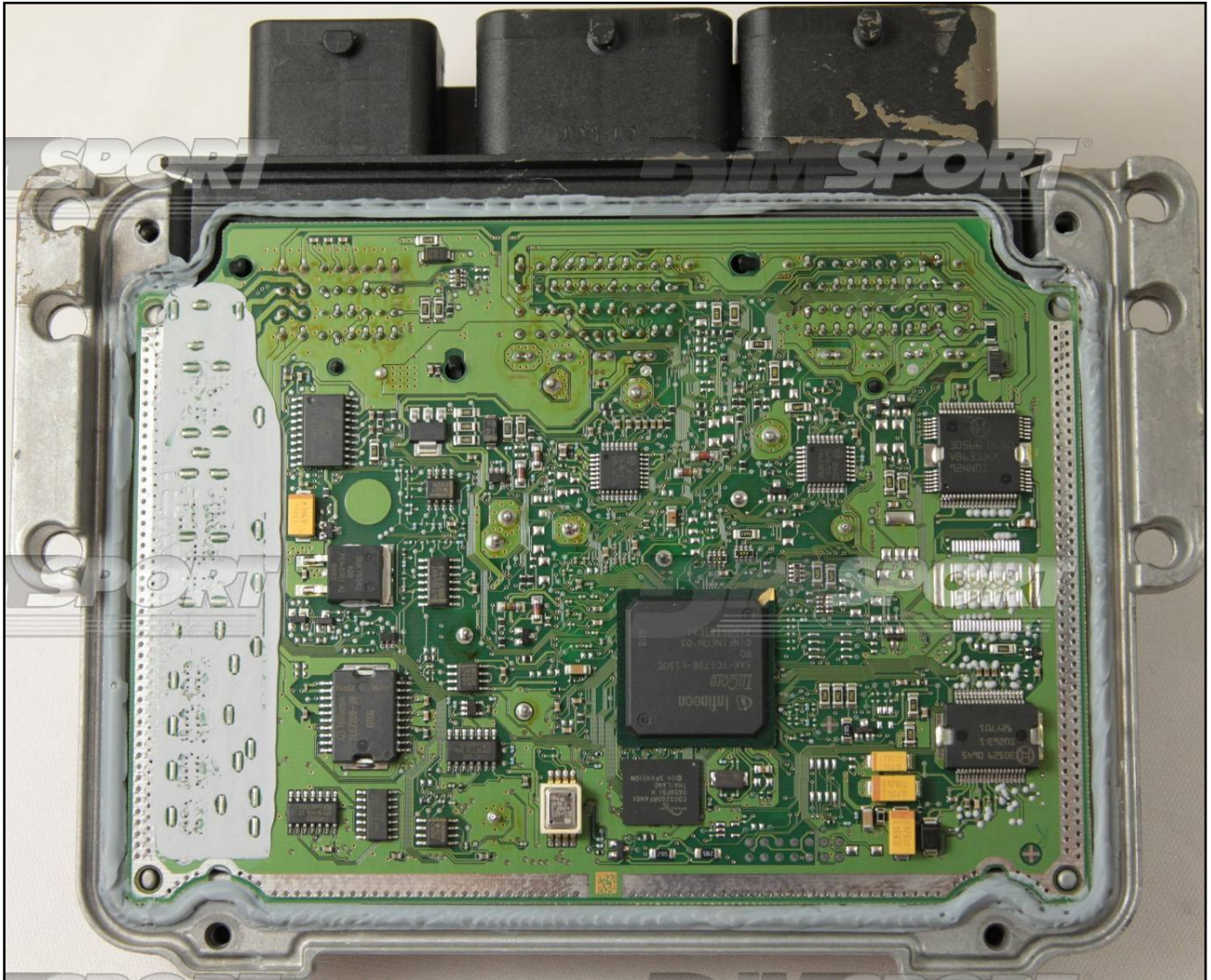


This connection picture is merely indicative.



BOSCH MEDV174 XROM TC1796 PSA

plugin 209
MEV174 (ATMOSPHERIC engine)

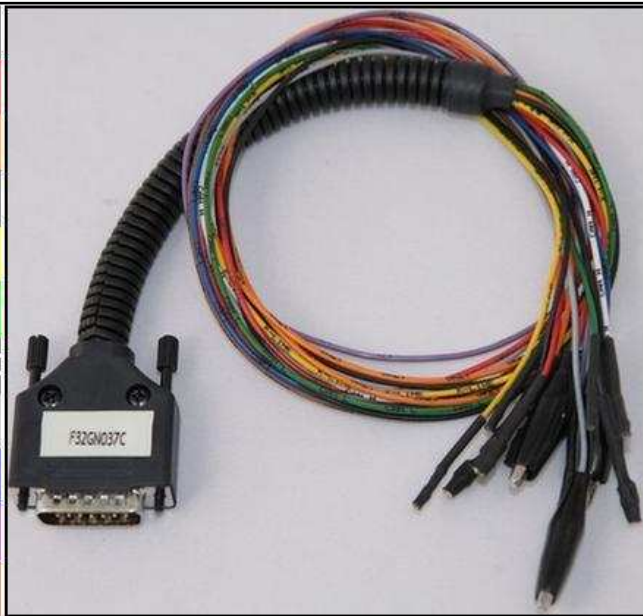


BOSCH MEDV174 XROM TC1796 PSA

ECU CONNECTOR

In order to connect to the ECU use the CABLE F32GN037C.
Make sure that the POWER led (red) on Trasdata is ON
Do NOT use this connection with the DIMA

COLORE FILO WIRE COLOUR	DESCRIZIONE DESCRIPTION
ROSSO RED	POSITIVO DIRETTO POWER BATTERY
ARANCIO ORANGE	POSITIVO SOTTO QUADRO POWER SWITCH ON
NERO BLACK	MASSA GND
GIALLO YELLOW	KLINE
VERDE GREEN	CAN LOW
BIANCO WHITE	CAN HIGH
GRIGIO GREY	POL4 BOOT
BLU BLUE	POL5 CNF1
VIOLA/GRIGIO PURPLE/GREY	TENSIONE PROG. PROG. VOLTAGE
MARRONE BROWN	RESET

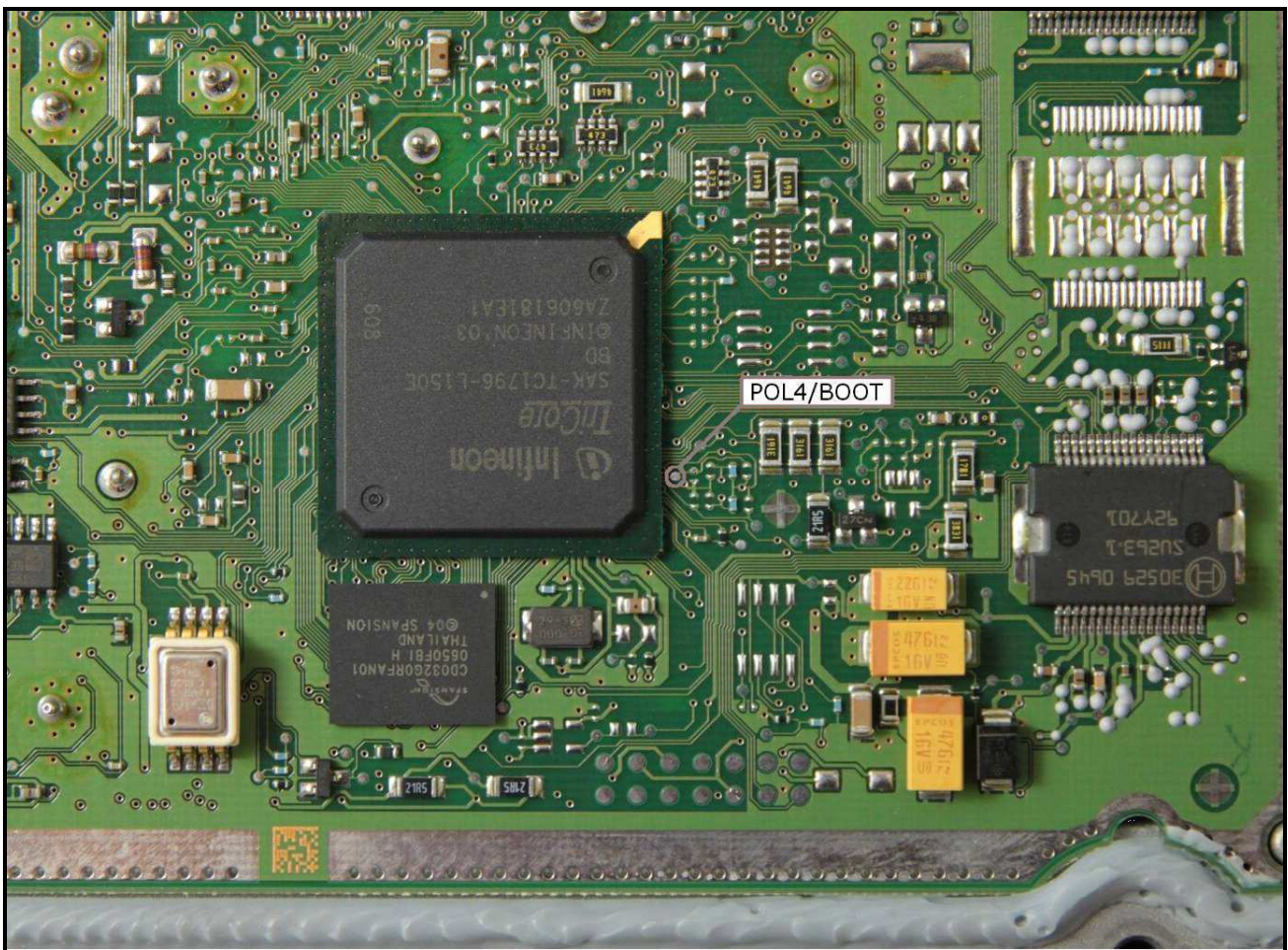


BOSCH MEDV174 XROM TC1796 PSA

POL4/BOOT DIRECT CONNECTION MEV174 (ATMOSPHERIC engine)

Connect the GREY wire of the cable F32GN037C as described here below :

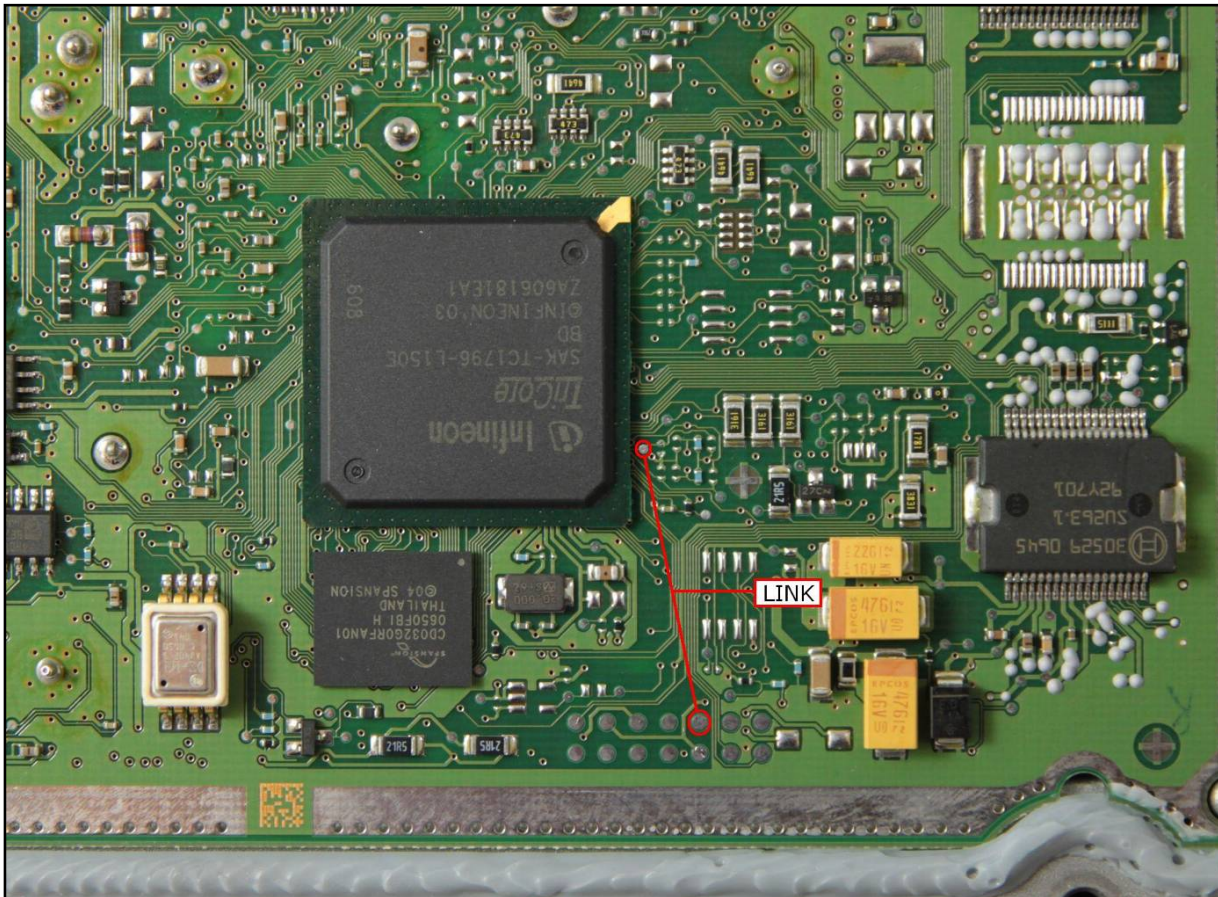
COLORE FILO WIRE COLOUR	DESCRIZIONE DESCRIPTION
GRIGIO GREY	POL4 BOOT



BOSCH MEDV174 XROM TC1796 PSA

DIMA CONNECTION MEV174 (ATMOSPHERIC engine)

Connect the boot pin to the pad n.10 of the soldering lay-by pins then verify that the switch BOOT present on the F34DM011 is set in position ON.



This connection picture is merely indicative.

