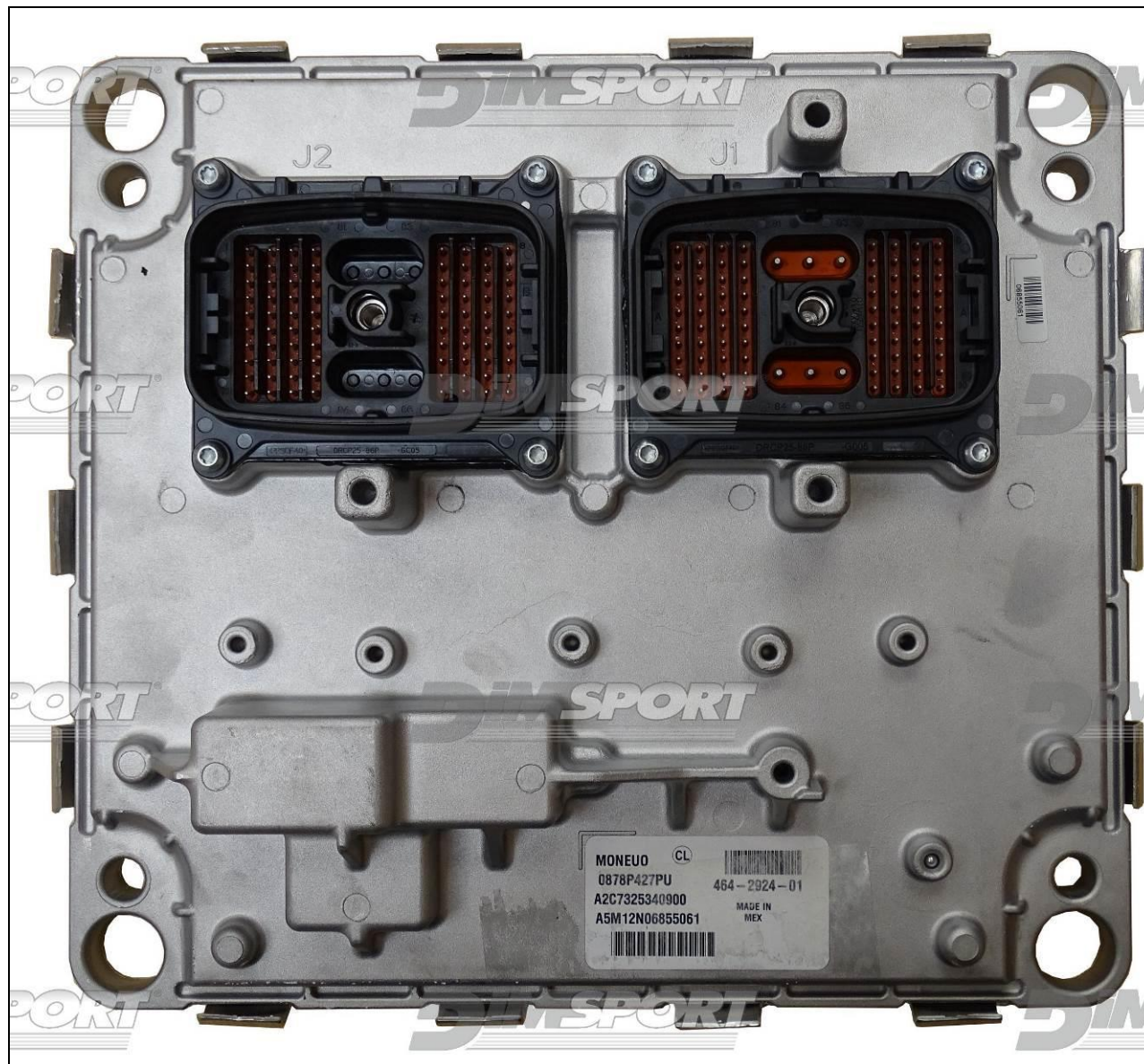
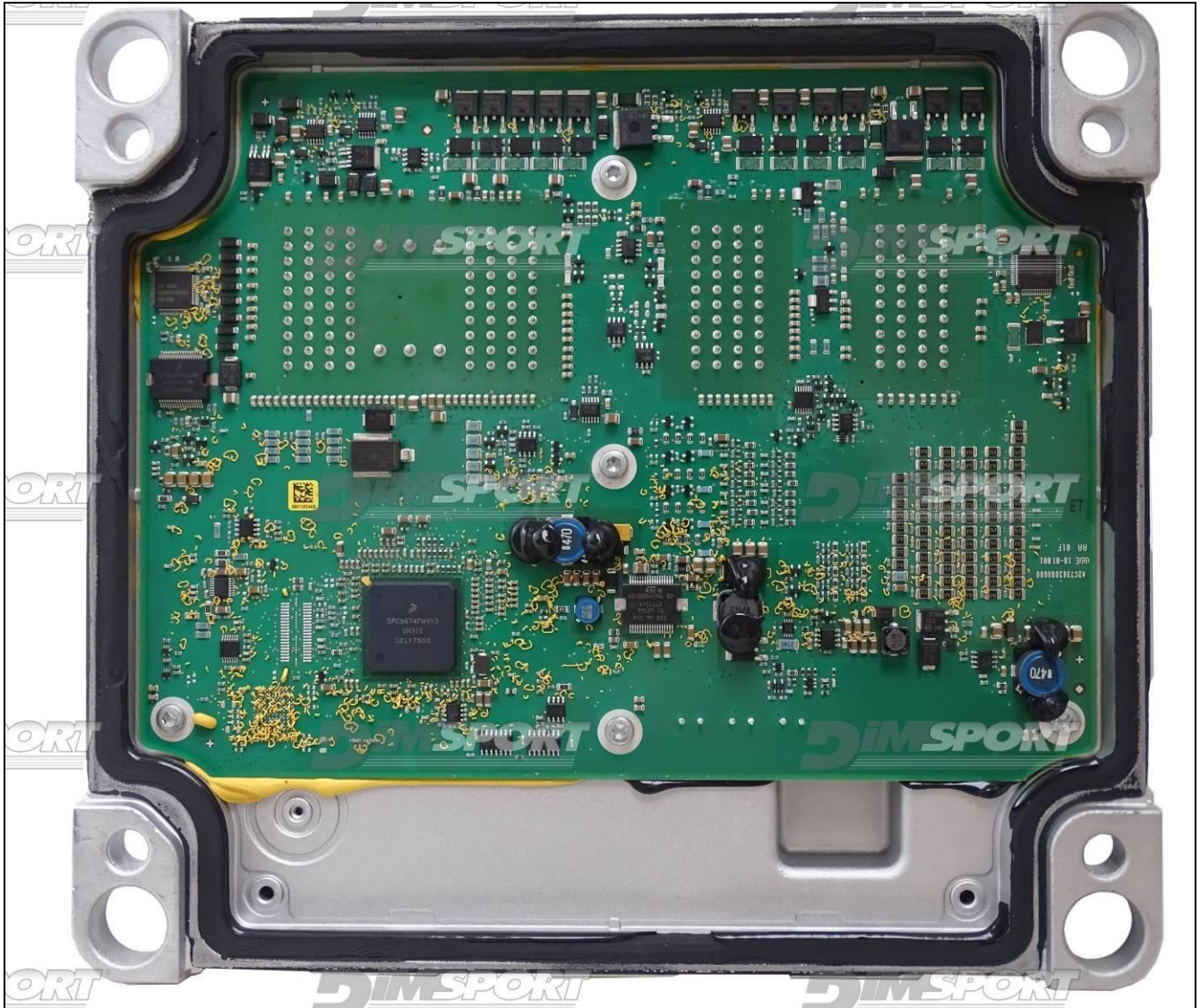


CAT A5M12 MPC5674F CATERPILLAR

plugin 1777



CAT A5M12 MPC5674F CATERPILLAR



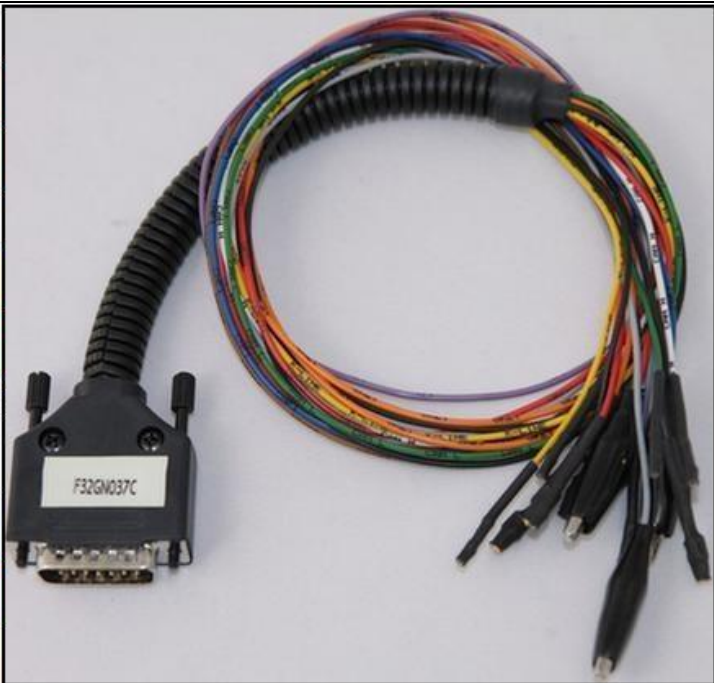
CAT A5M12 MPC5674F CATERPILLAR

DIRECT CONNECTION

In order to connect to the ECU use the cable F32GN037C/D.

Make sure that the POWER led (red) on Trasdata is ON.

COLORE FILO WIRE COLOUR	DESCRIZIONE DESCRIPTION
ROSSO RED	POSITIVO DIRETTO POWER BATTERY
ARANCIO ORANGE	POSITIVO SOTTO QUADRO POWER SWITCH ON
NERO BLACK	MASSA GND
GIALLO YELLOW	KLINE
VERDE GREEN	CAN LOW
BIANCO WHITE	CAN HIGH
GRIGIO GREY	POL4 BOOT
BLU BLUE	POL5 CNF1
VIOLA/GRIGIO PURPLE/GREY	TENSIONE PROG. PROG. VOLTAGE
MARRONE BROWN	RESET

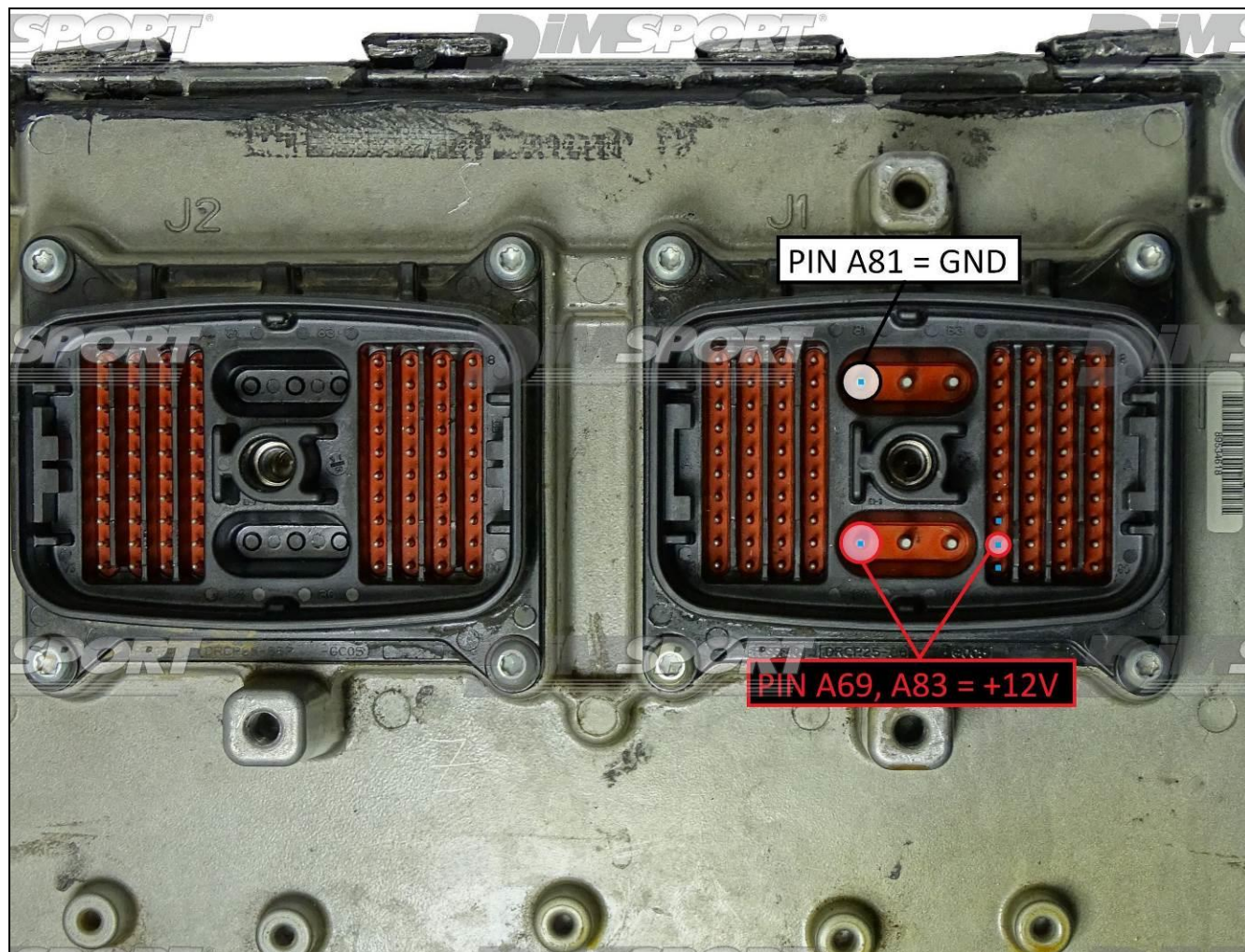


Due to the relevant power absorbed by the ECU at the beginning of the communication it is necessary to feed the ECU with an external power supply or a car battery. Connect the power cable F32GN003 to the Trasdata and then to the power source.

The ECU must be powered through the Trasdata using the F32GN037C/D cable.





CAT A5M12 MPC5674F CATERPILLAR



CAT A5M12 MPC5674F CATERPILLAR

J-TAG LOOSE WIRINGS CONNECTION

Connect the FLAT cable F34NTF53 as shown here below:



Pin	Colore Coulor
11	Non usato Not used
12	Non usato Not used
13	Non usato Not used
14	Non usato Not used
15	Non usato Not used
16	Blu Blue
17	Non usato Not used
18	Grigio Grey
19	Bianco White
20	Nero Black
21	Marrone Brown
22	Rosso Red
23	Non usato Not used
24	Giallo Yellow
25	Non usato Not used
26	Non usato Not used

CAT A5M12 MPC5674F CATERPILLAR

Solder the wires on the pads 16,18,19,20,21,22,24 avoiding any short circuits.

