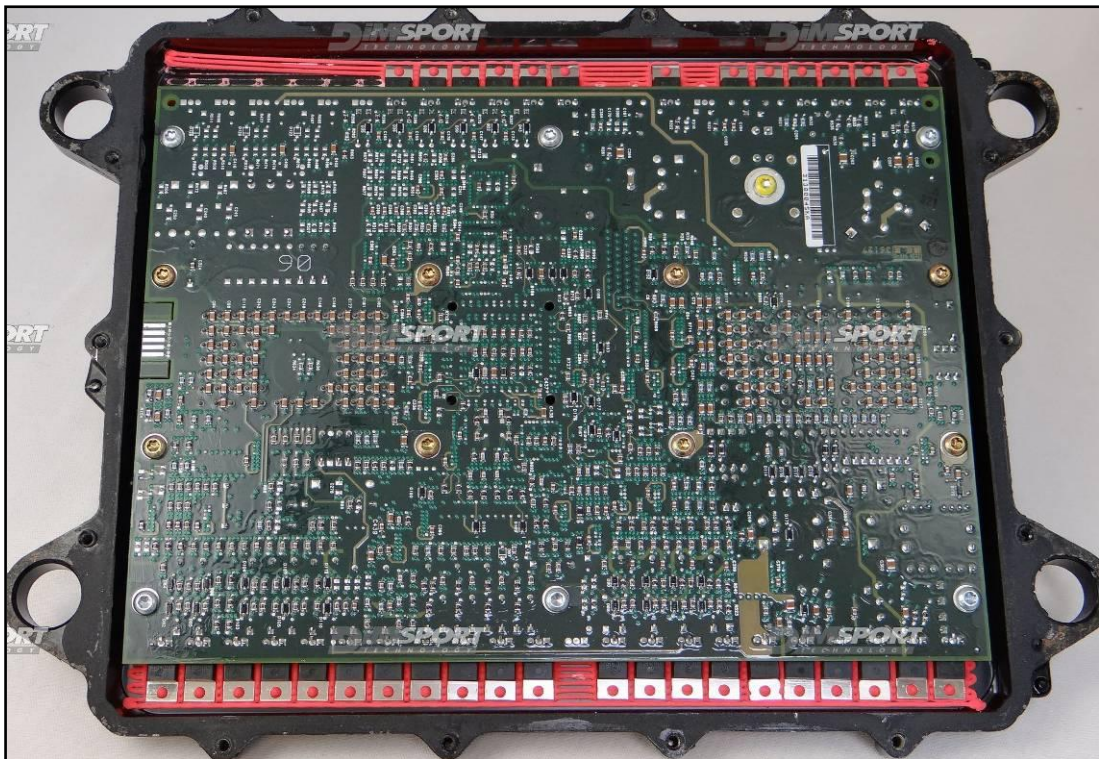


CAT ADEM III 28F800B CATERPILLAR

plugin 440, 648

TYPE 01



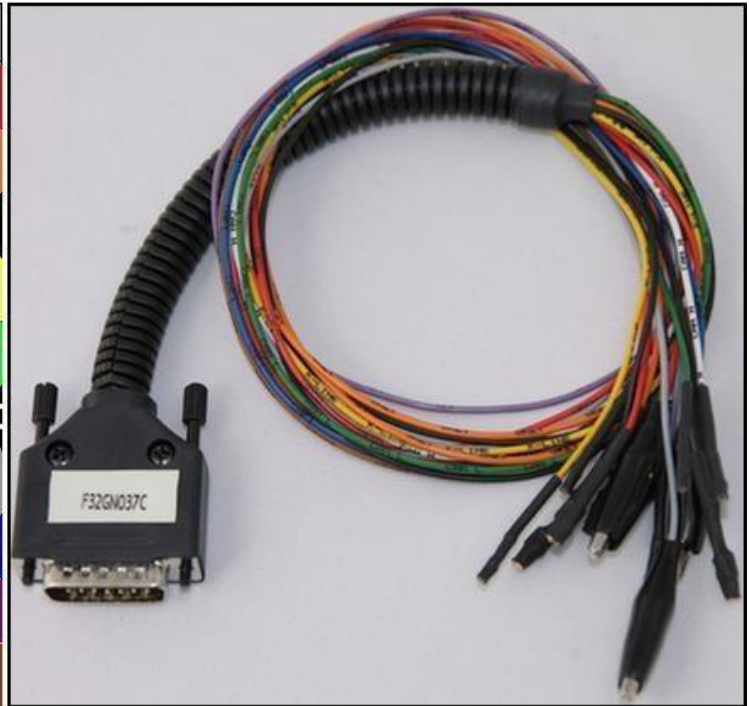
CAT ADEM III 28F800B CATERPILLAR

DIRECT CONNECTION

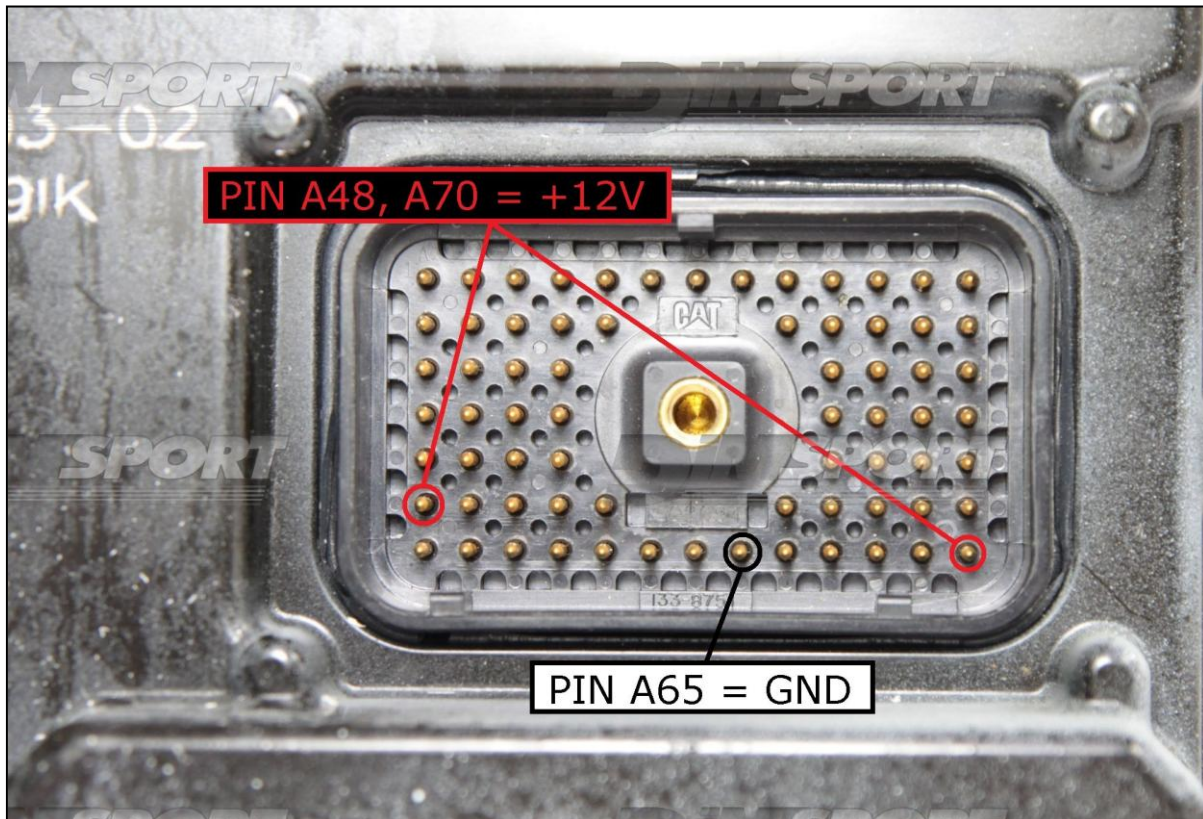
In order to connect to the ECU use the CABLE F32GN037C/D.

Make sure that the POWER led (red) on Trasdata is ON.

COLORE FILO WIRE COLOUR		DESCRIZIONE DESCRIPTION
ROSSO RED		POSITIVO DIRETTO POWER BATTERY
ARANCIO ORANGE		POSITIVO SOTTO QUADRO POWER SWITCH ON
NERO BLACK		MASSA GND
GIALLO YELLOW		KLINE
VERDE GREEN		CAN LOW
BIANCO WHITE		CAN HIGH
GRIGIO GREY		POL4 BOOT
BLU BLUE		POL5 CNF1
VIOLA/GRIGIO PURPLE/GREY		TENSIONE PROG. PROG. VOLTAGE
MARRONE BROWN		RESET



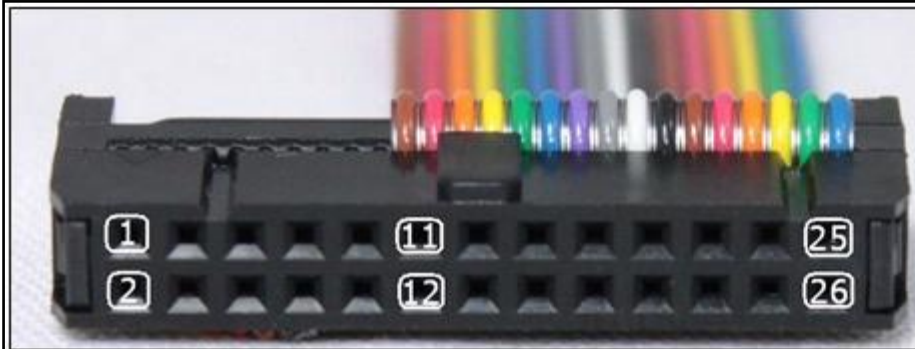
ECU CONNECTOR : connector A



CAT ADEM III 28F800B CATERPILLAR

ECU DIRECT CONNECTION WITH FREE WIRINGS:

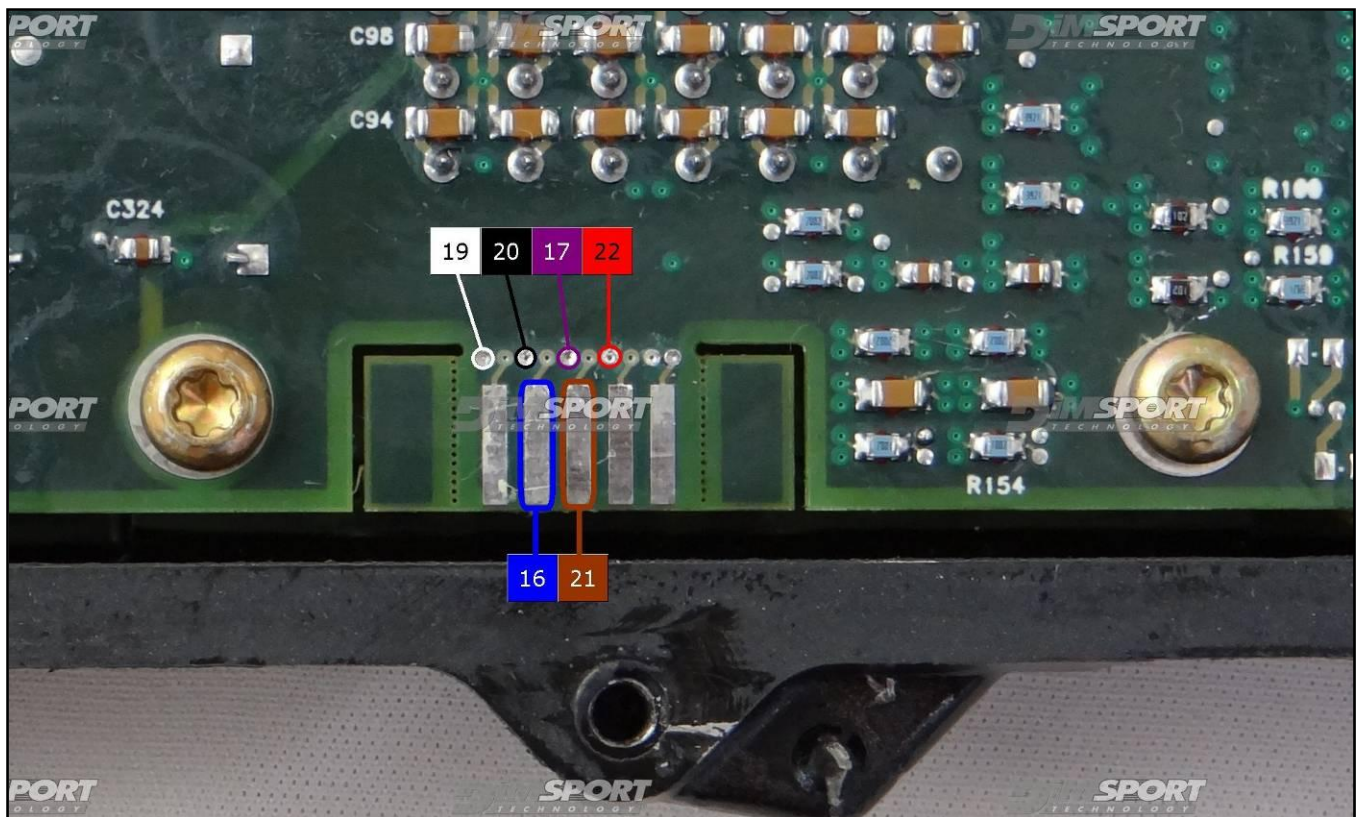
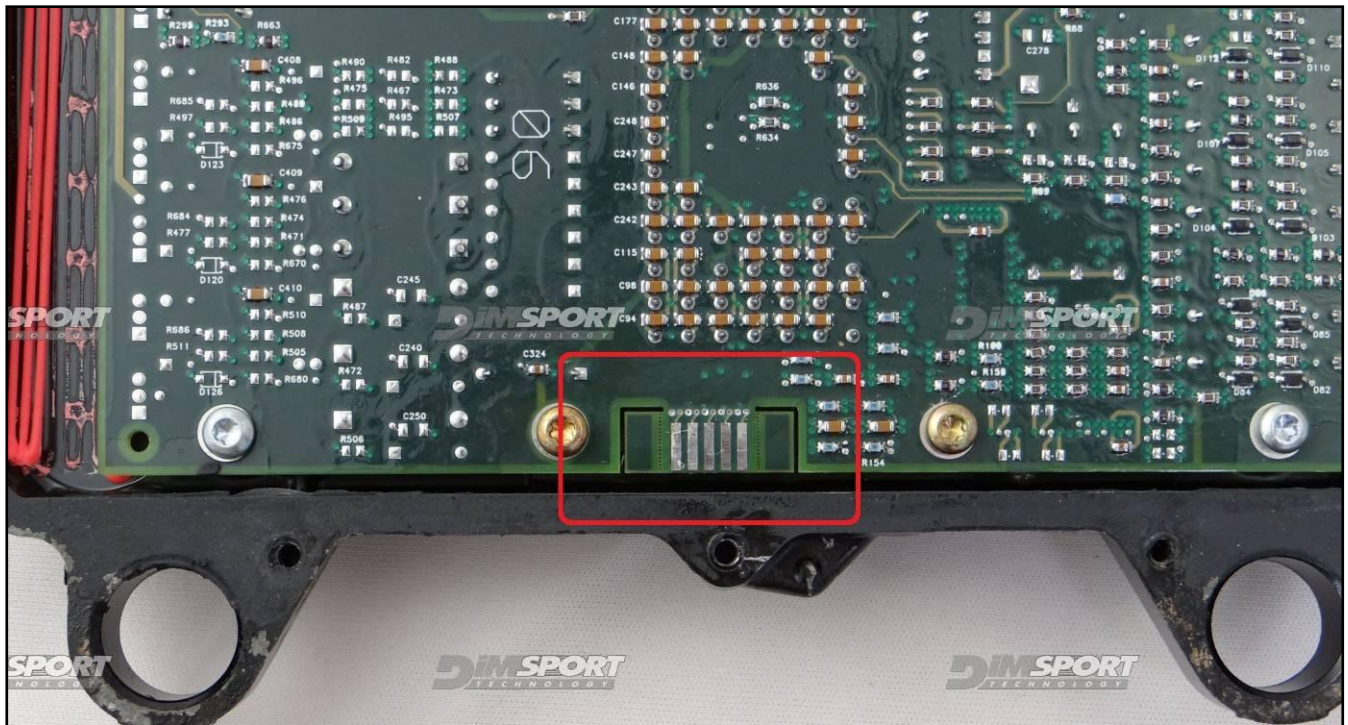
Connect the FLAT cable F34NTF53 as shown here below:



Pin	Colore Color
11	Non usato Not used
12	Non usato Not used
13	Non usato Not used
14	Non usato Not used
15	Non usato Not used
16	Blu Blue
17	Viola Violet
18	Non usato Not used
19	Bianco White
20	Nero Black
21	Marrone Brown
22	Rosso Red
23	Non usato Not used
24	Non usato Not used
25	Non usato Not used
26	Non usato Not used

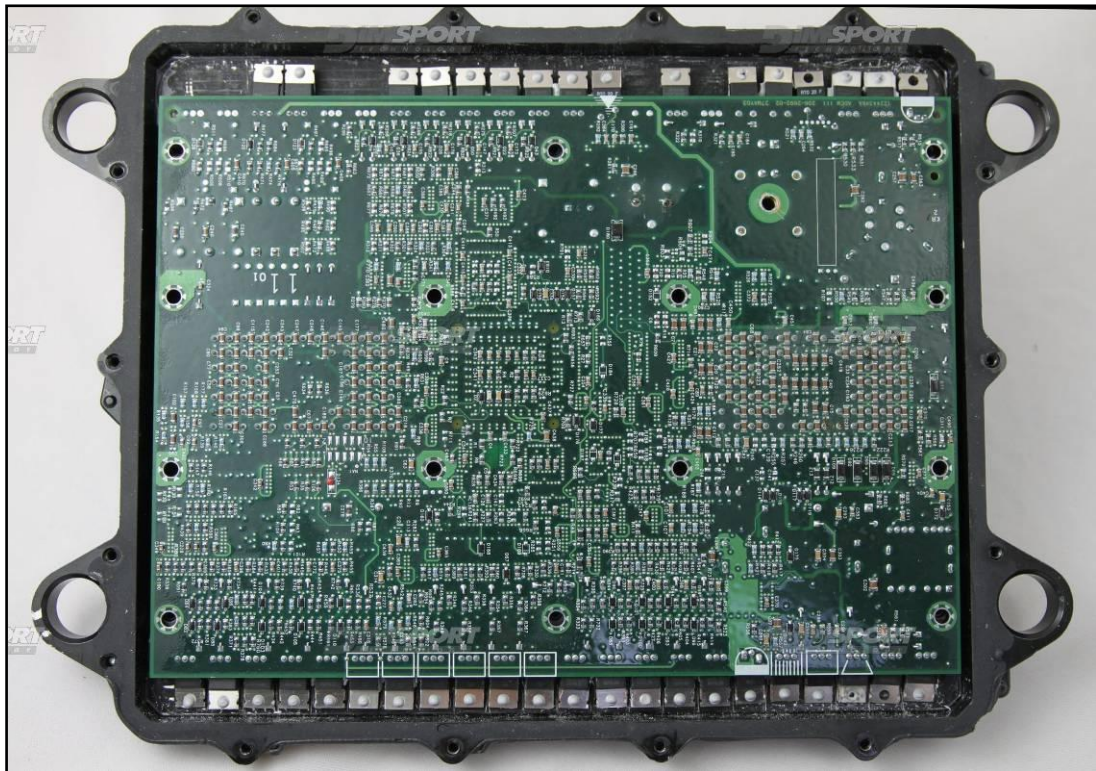


CAT ADEM III 28F800B CATERPILLAR



CAT ADEM III 28F800B CATERPILLAR

TYPE 02



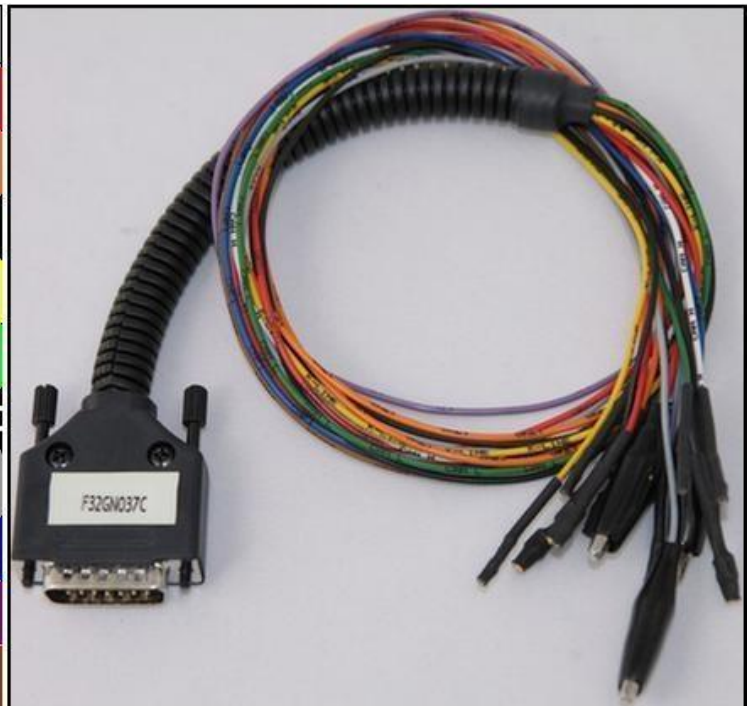
CAT ADEM III 28F800B CATERPILLAR

DIRECT CONNECTION

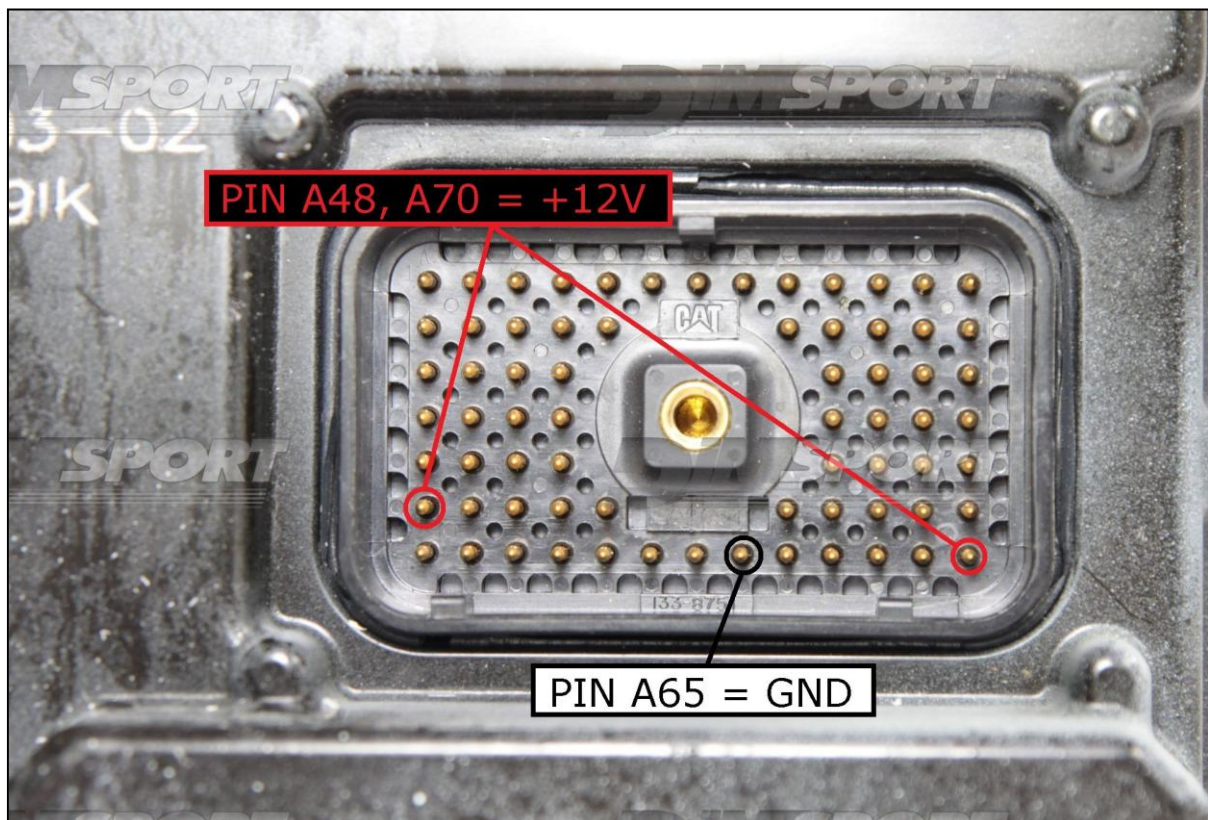
In order to connect to the ECU use the CABLE F32GN037C/D.

Make sure that the POWER led (red) on Trasdata is ON.

COLORE FILO WIRE COLOUR		DESCRIZIONE DESCRIPTION
ROSSO RED		POSITIVO DIRETTO POWER BATTERY
ARANCIO ORANGE		POSITIVO SOTTO QUADRO POWER SWITCH ON
NERO BLACK		MASSA GND
GIALLO YELLOW		KLINE
VERDE GREEN		CAN LOW
BIANCO WHITE		CAN HIGH
GRIGIO GREY		POL4 BOOT
BLU BLUE		POL5 CNF1
VIOLA/GRIGIO PURPLE/GREY		TENSIONE PROG. PROG. VOLTAGE
MARRONE BROWN		RESET

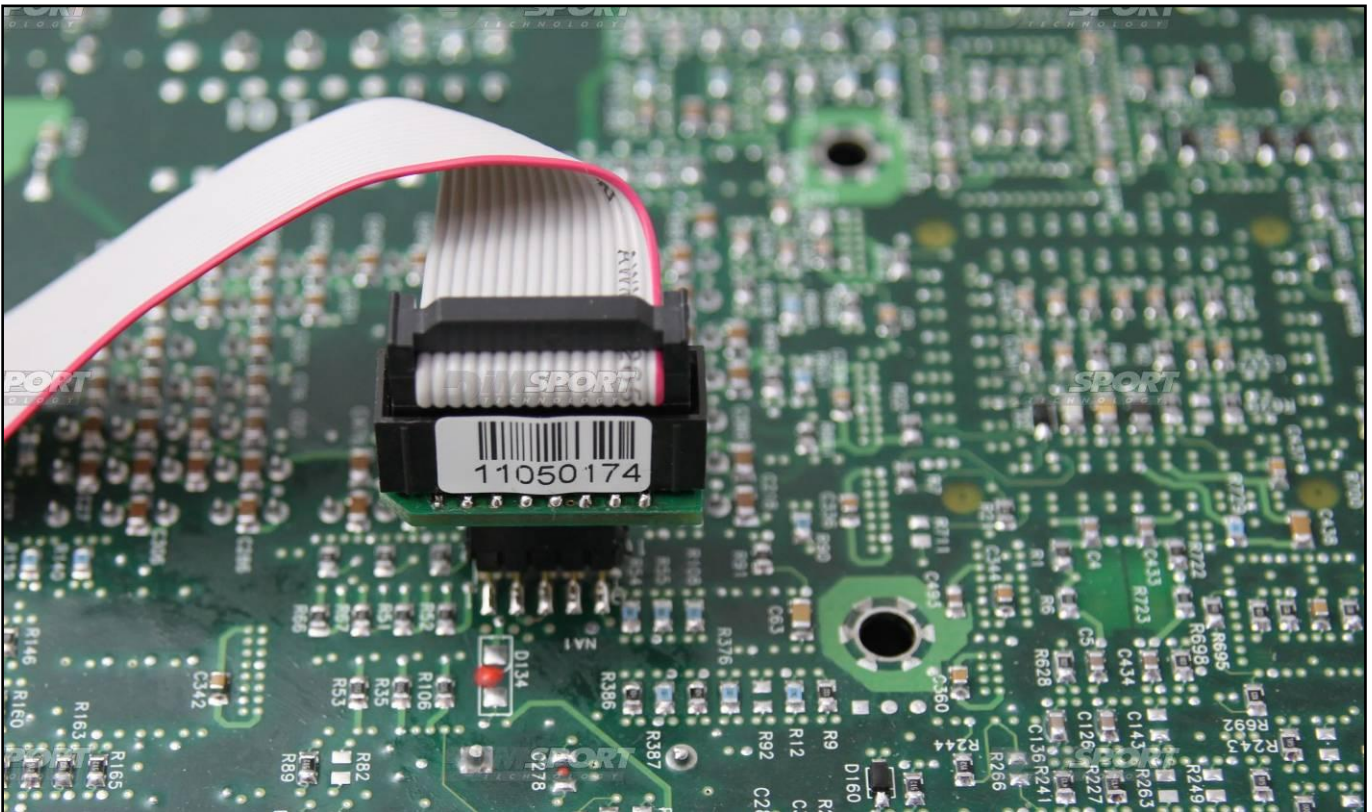
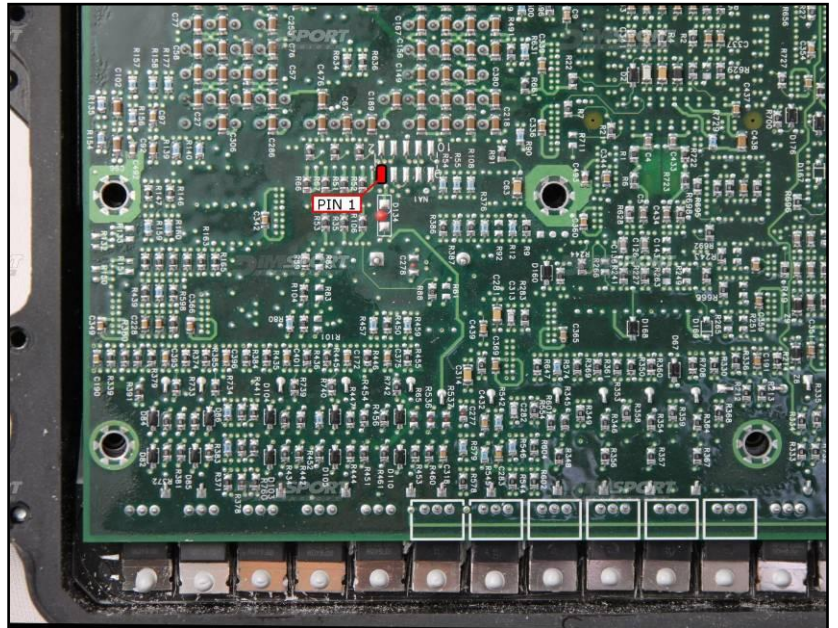
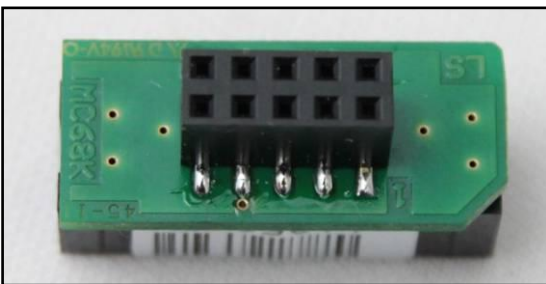
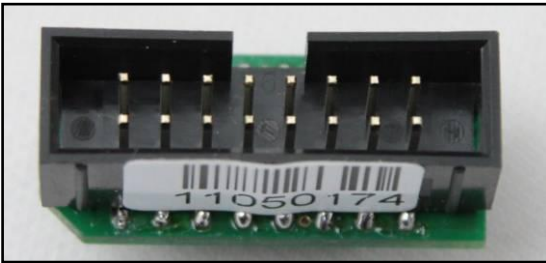


ECU CONNECTOR : connector A



CAT ADEM III 28F800B CATERPILLAR

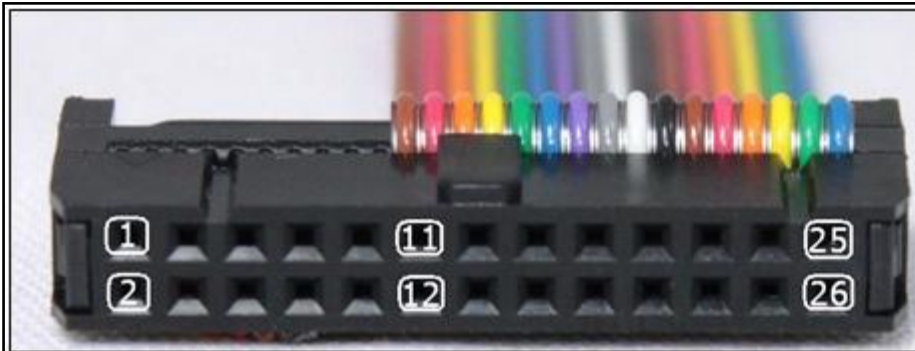
F34NTA11 ADAPTER CONNECTION



CAT ADEM III 28F800B CATERPILLAR

ECU DIRECT CONNECTION WITH FREE WIRINGS:

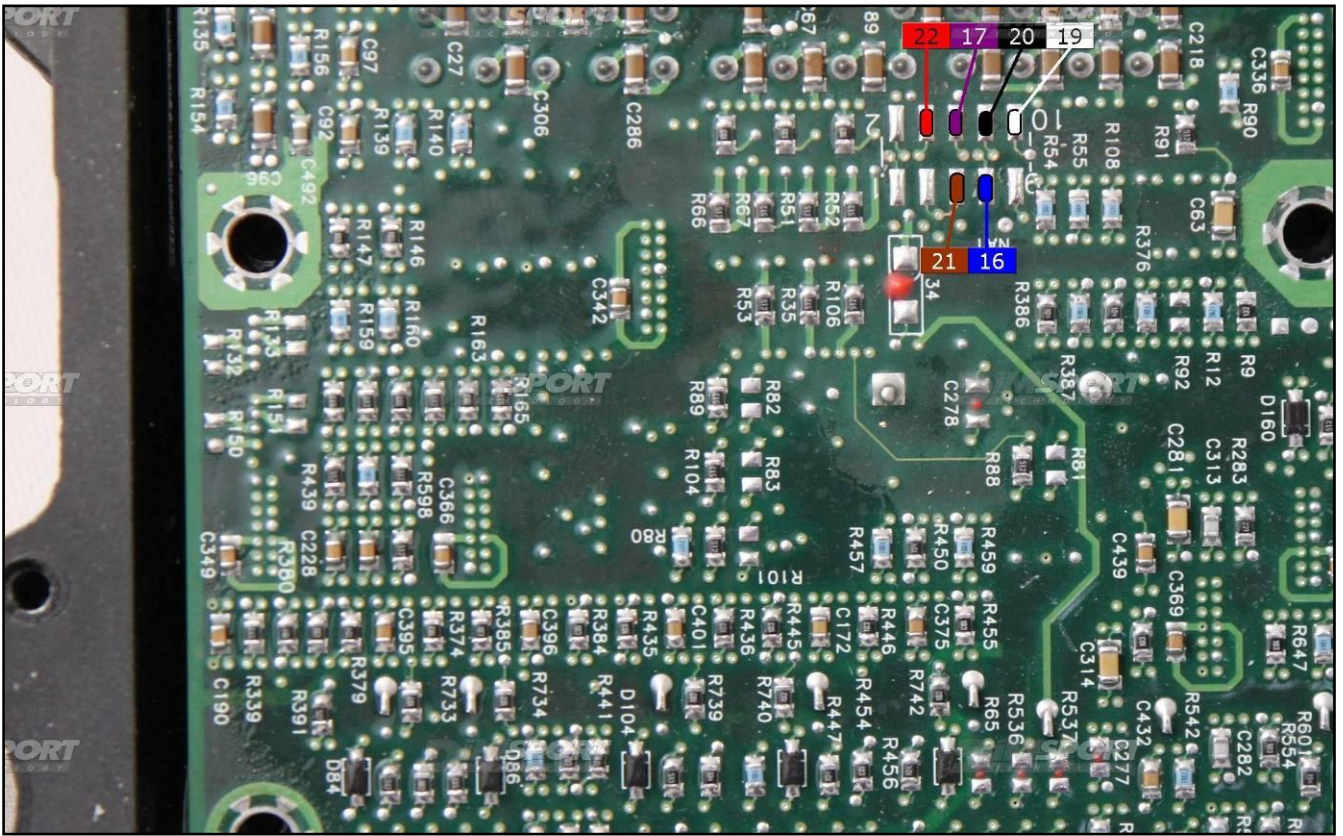
Connect the FLAT cable F34NTF53 as shown here below:



Pin	Colore Color
11	Non usato Not used
12	Non usato Not used
13	Non usato Not used
14	Non usato Not used
15	Non usato Not used
16	Blu Blue
17	Viola Violet
18	Non usato Not used
19	Bianco White
20	Nero Black
21	Marrone Brown
22	Rosso Red
23	Non usato Not used
24	Non usato Not used
25	Non usato Not used
26	Non usato Not used



CAT ADEM III 28F800B CATERPILLAR



CAT ADEM III 28F800B CATERPILLAR

TYPE 001 & TYPE 002

IMPORTANT FOR THE CLONING PROCEDURE: in order to write the BOOT BLOCK sector (from 0x00000 to 0x004000) of the external flash INTEL 28F800B it is necessary to use a resistor of 680 ohm as shown in the following picture. **WARNING** do not use a resistor with a different Ohm value from the one shown in the picture, different type of resistor could damage the ECU.

