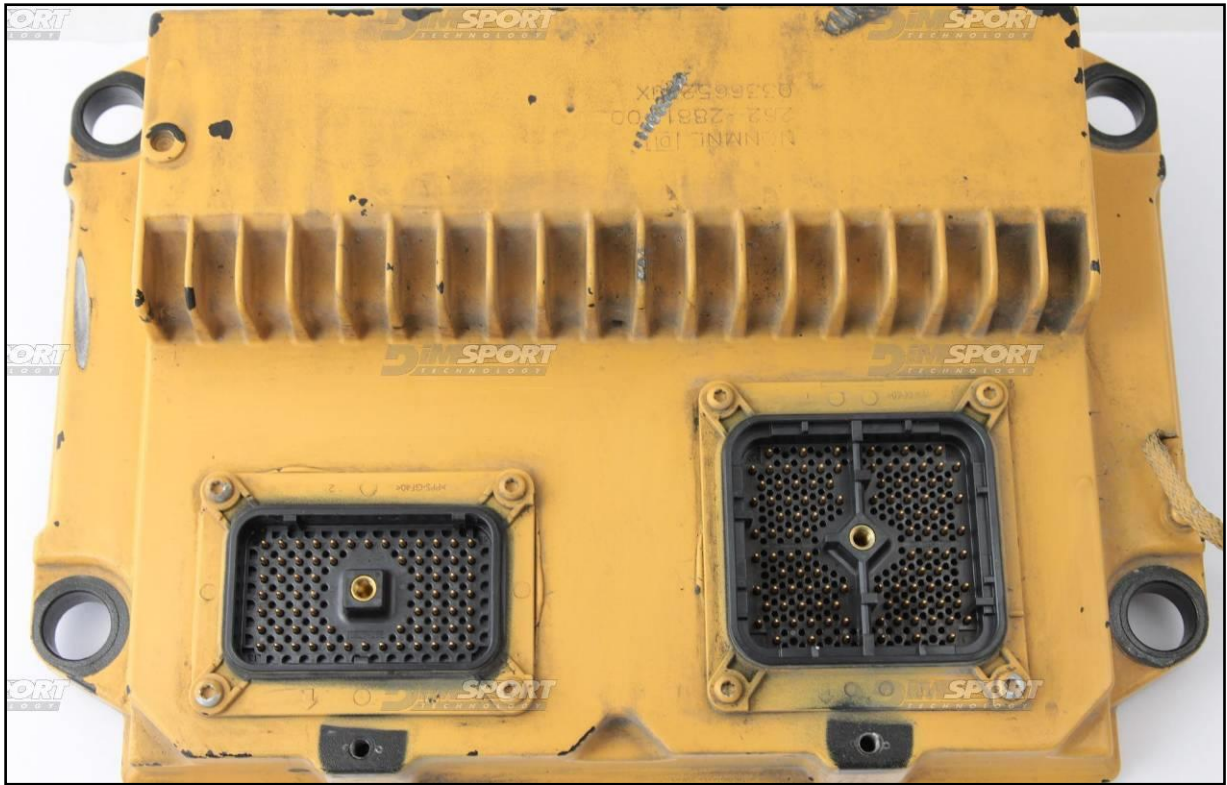
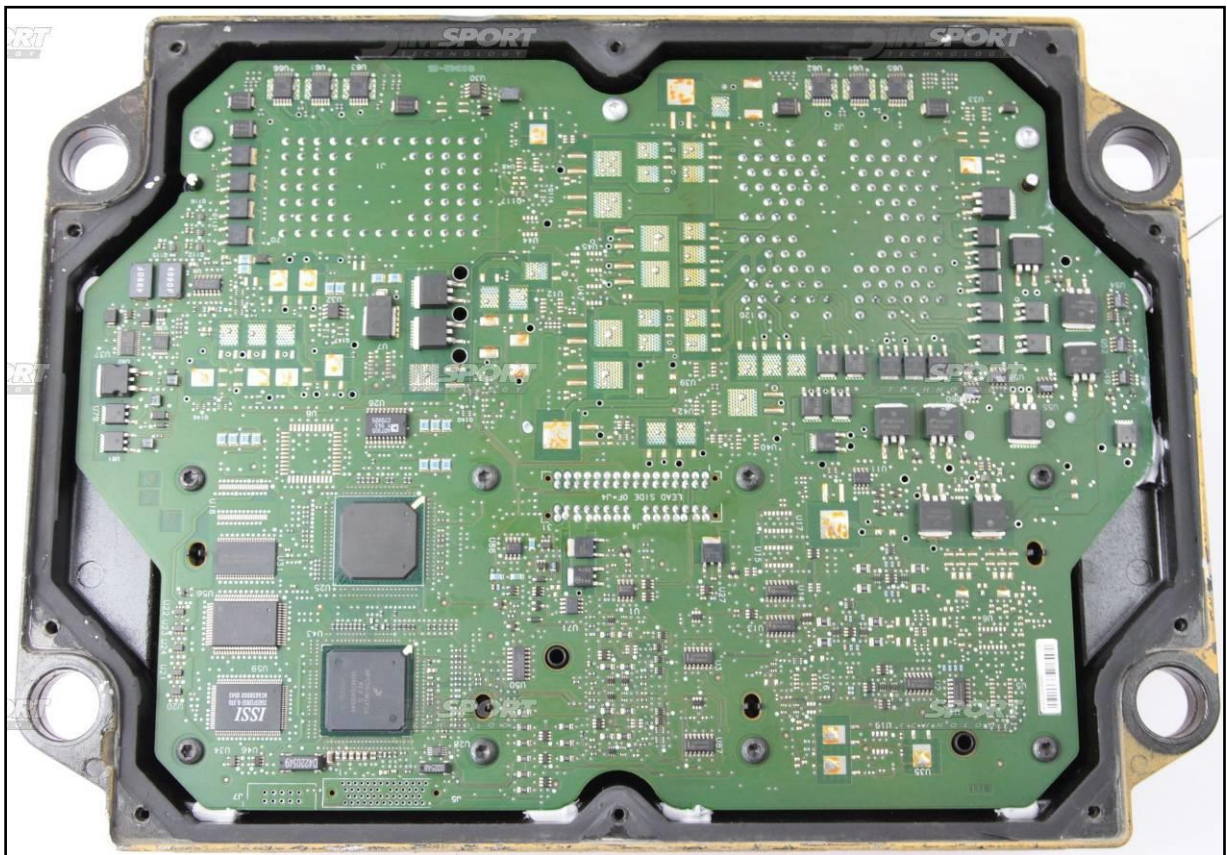


CAT ADEM IV CATERPILLAR

plugin 332

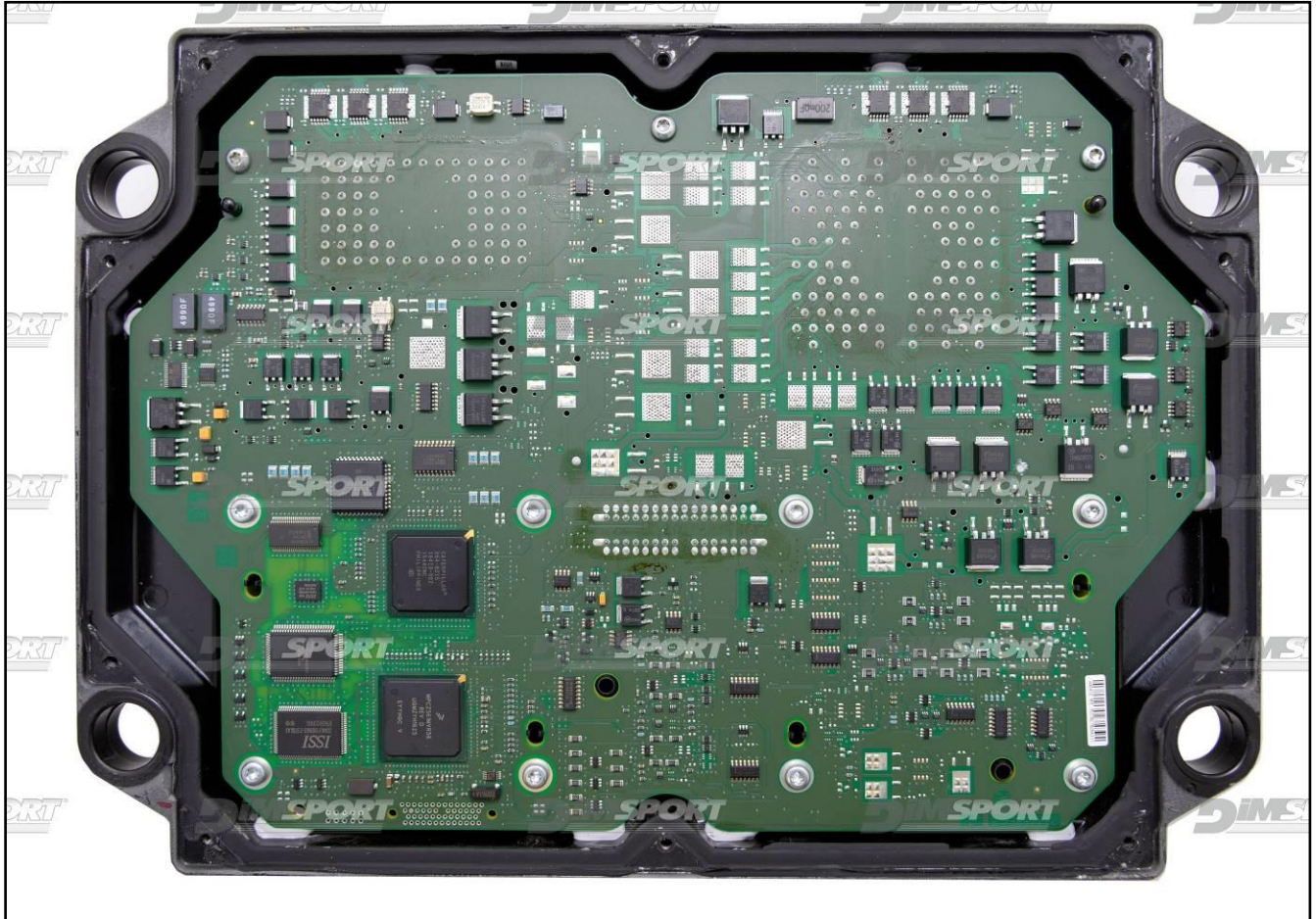


Ecu TYPE 001



CAT ADEM IV CATERPILLAR

Ecu TYPE 002



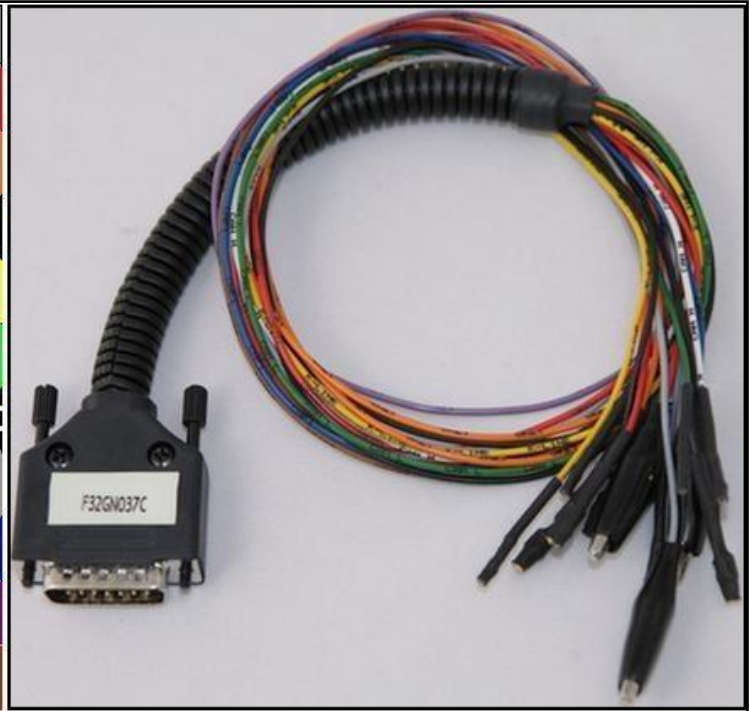
CAT ADEM IV CATERPILLAR

ECU CONNECTOR

In order to connect to the ECU use the CABLE F32GN037C/D.

Make sure that the POWER led (red) on Trasdata is ON.

COLORE FILO WIRE COLOUR		DESCRIZIONE DESCRIPTION
ROSSO RED		POSITIVO DIRETTO POWER BATTERY
ARANCIO ORANGE		POSITIVO SOTTO QUADRO POWER SWITCH ON
NERO BLACK		MASSA GND
GIALLO YELLOW		KLINE
VERDE GREEN		CAN LOW
BIANCO WHITE		CAN HIGH
GRIGIO GREY		POL4 BOOT
BLU BLUE		POL5 CNF1
VIOLA/GRIGIO PURPLE/GREY		TENSIONE PROG. PROG. VOLTAGE
MARRONE BROWN		RESET

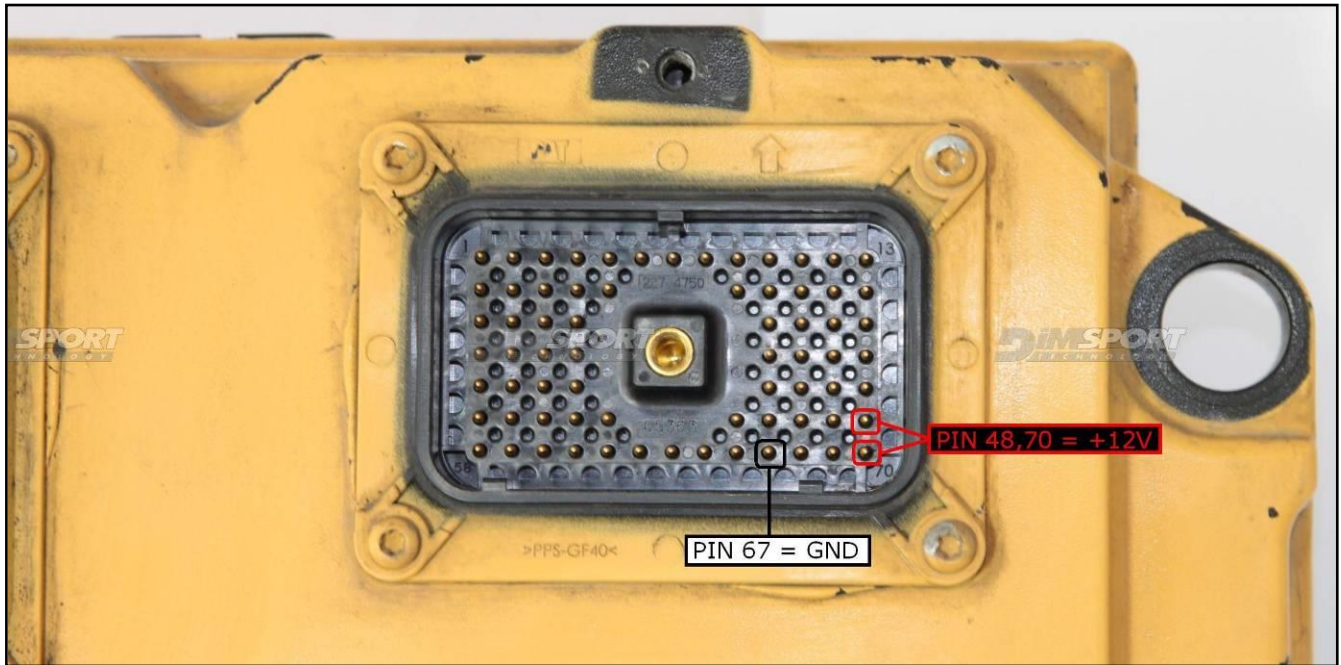


Due to the relevant power absorbed by the ECU at the beginning of the communication it is necessary to feed the ECU with an external power supply or a car battery. Connect the power cable F32GN003 to the Trasdata and then to the power source.

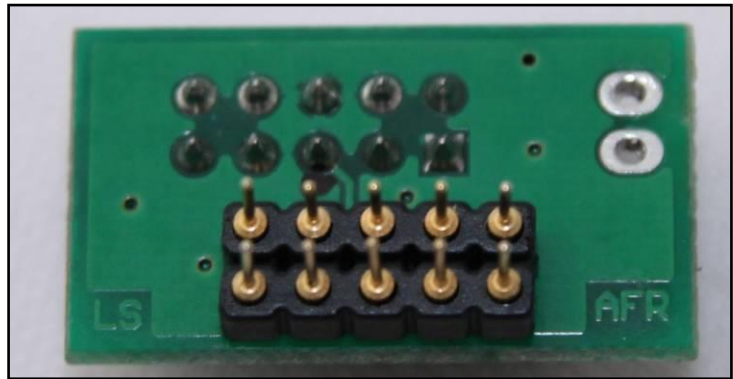
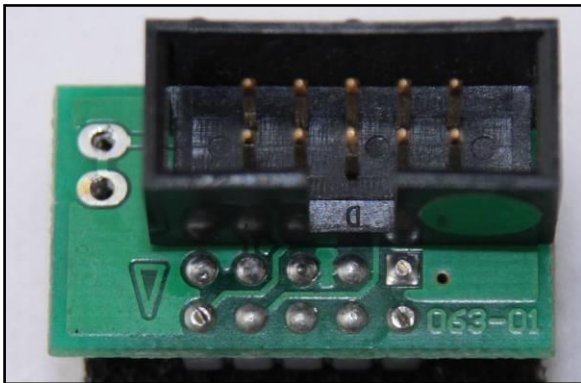
The ECU must be powered through the Trasdata using the F32GN037C/D cable.



CAT ADEM IV CATERPILLAR

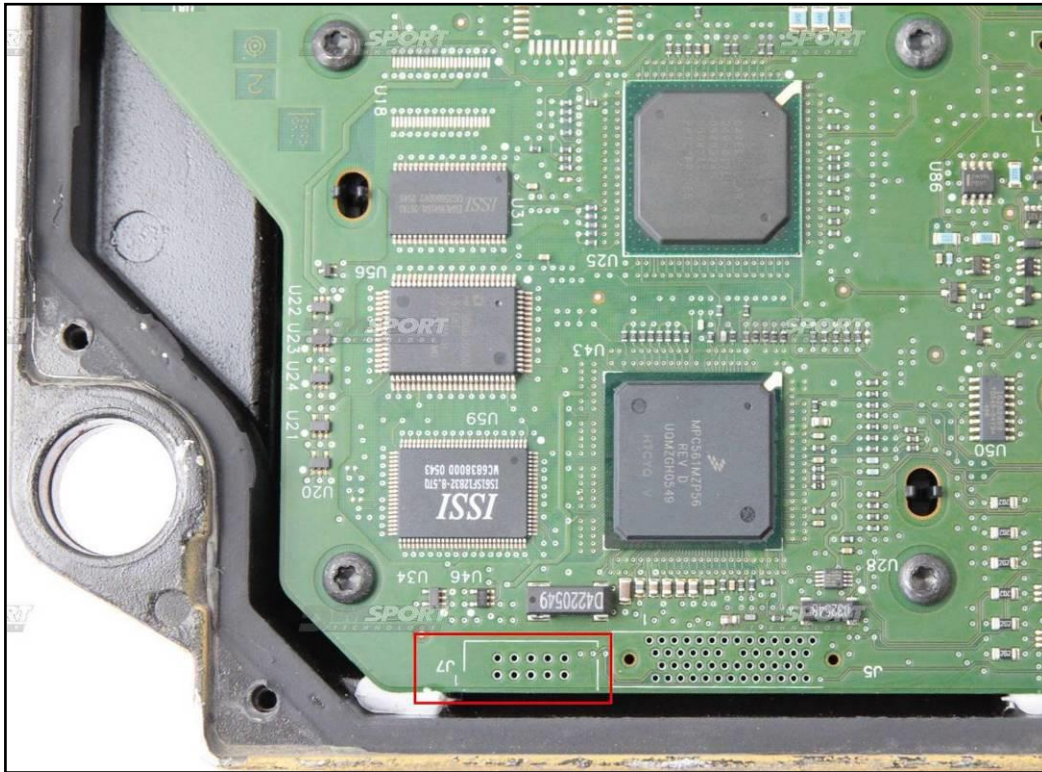


F34NTA03 ADAPTER CONNECTION



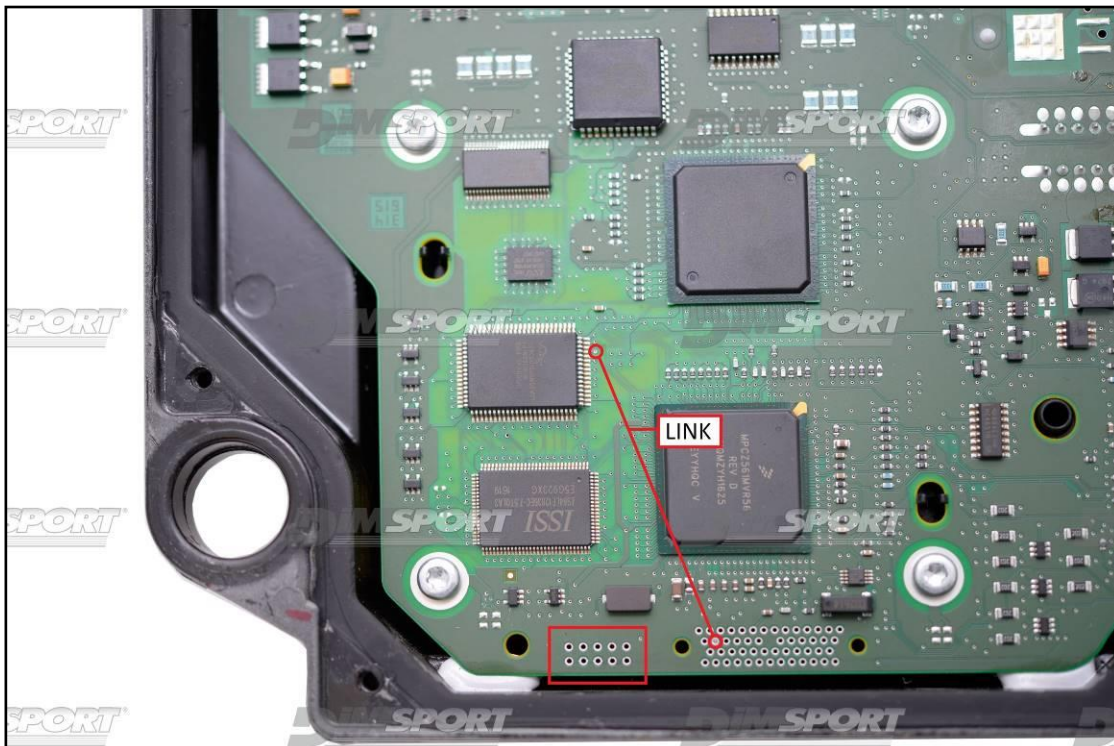
CAT ADEM IV CATERPILLAR

Ecu TYPE 001



Ecu TYPE 002

WARNING : in order to write the ECU it is necessary to create the little bridge LINK that enables the writing process on the EXTERNAL FLASH. Remove it at the end of the writing process



CAT ADEM IV CATERPILLAR



CAT ADEM IV CATERPILLAR

F34DM001 DIMA CONNECTION

The ECU must be powered directly on the ECU connector with the F32GN037C/D wiring.

