

# CONTINENTAL MCM2.1 D4 IROM TC1797 MEB TRUCK

## plugin 1724

With this plugin it is NOT possible any reading or ECU clone operation.  
On this ECU it is possible only the PATCH UNLOCK, operation required to enable the complete functioning of the plugin 1030.  
To perform the PATCH UNLOCK you can follow the instructions at pag. 5 of this manual.



CONTINENTAL MCM2.1 D4 IROM TC1797 MEB TRUCK

The required cable for the correct communication is F34NTA19.

**WARNING:** Trasdata software might show the message " [E100082] Power output error" while communicating with the ECU.

In this case, it's NECESSARY to power the ECU at 12V in order to read it correctly.

**F34NTA19**



CONTINENTAL MCM2.1 D4 IROM TC1797 MEB TRUCK

**ECU CONNECTOR**

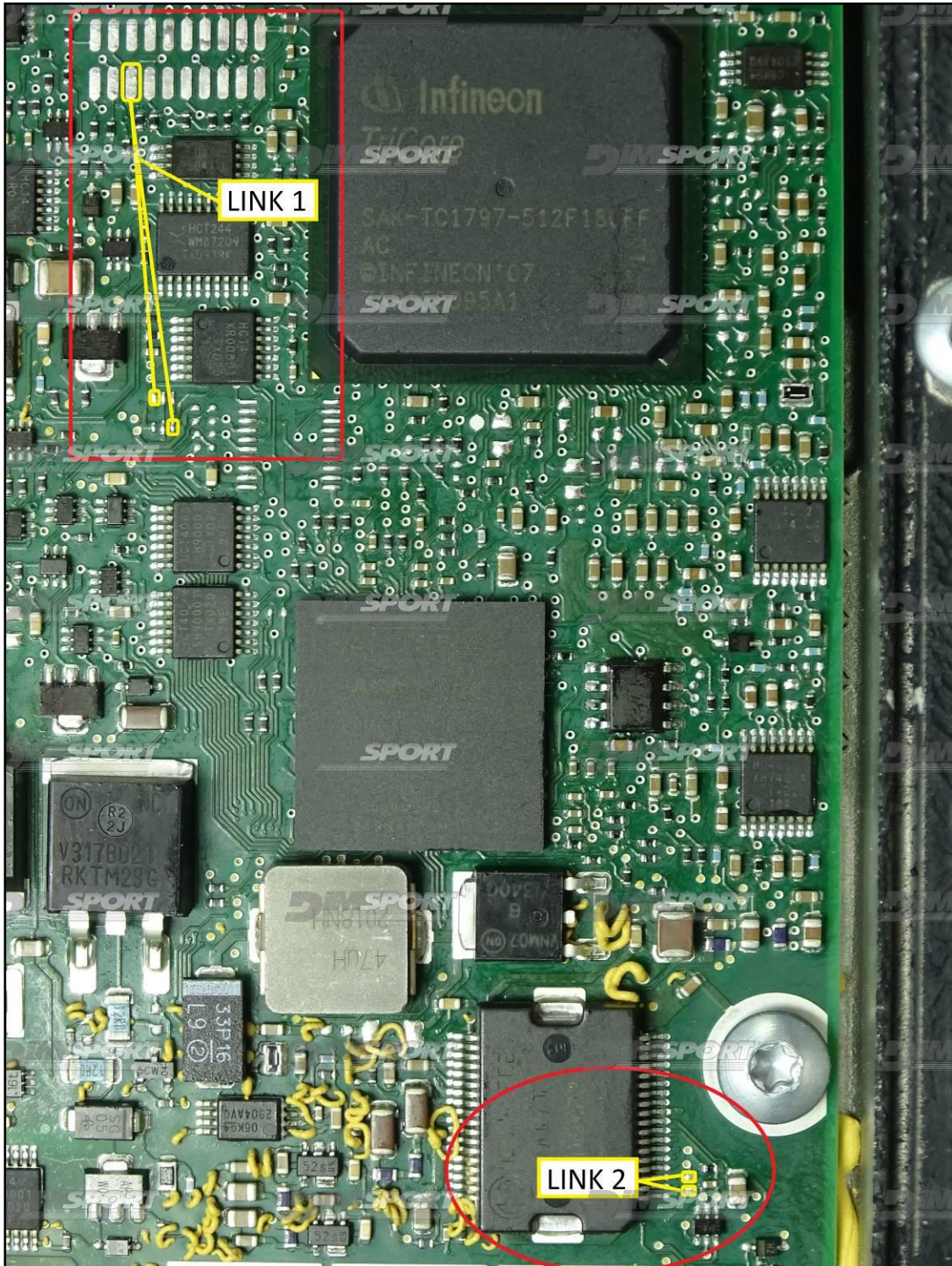


# CONTINENTAL MCM2.1 D4 IROM TC1797 MEB TRUCK

## DIRECT CONNECTION LINK

In order to work properly on the ECU, it is necessary to make the LINK1 & LINK2 as shown in the picture below.

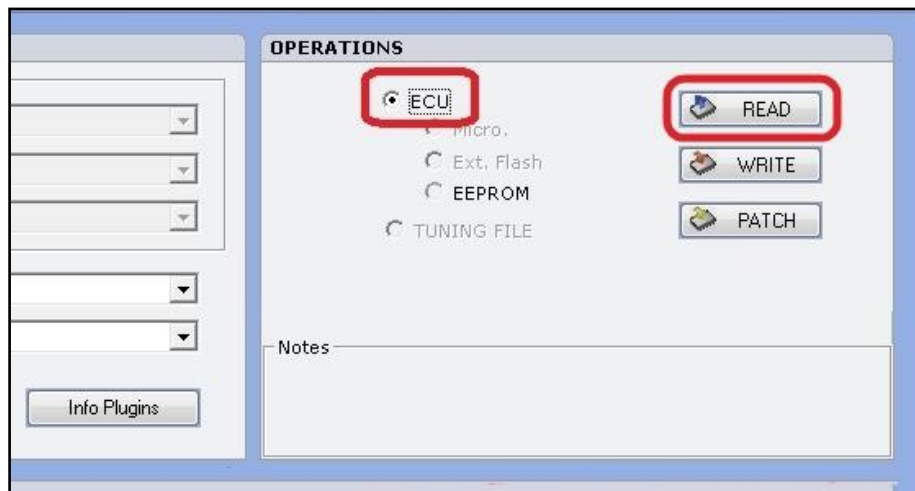
Remove the links once the PATCH operations have been performed on the ECU.



## PATCH UNLOCK

In order to unlock the ECU and to be able to subsequently program the vehicle with plugin 1030, the following operations must be carried out:

- Connect the ECU to the Trasdata as described in the previous pages
- Select the correct connection mode or vehicle.
- Perform the identification of the ECU clicking on the "ID" button.
- After the correct identification select the ECU option then proceed with the reading by clicking on "READ" button. At the end of the reading save the file .DIM on the pc.



- After saving the ECU .DIM file leave the option ECU selected and click on "PATCH" button. The software, in order to run the patch, will ask for the .DIM file read just before. Select the .DIM file and the Trasdata will execute the unlock of the ECU.

