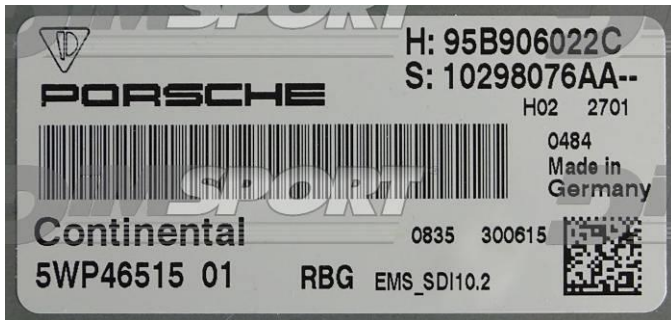


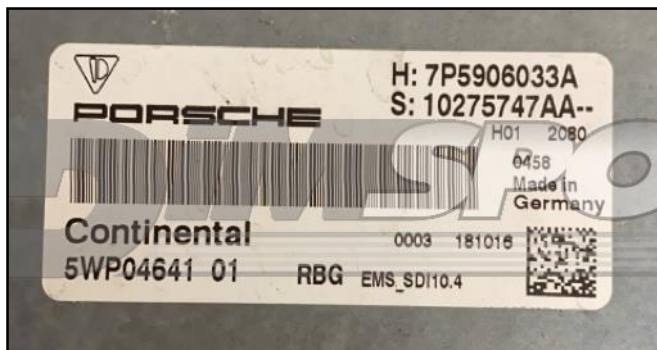
plugin 1565



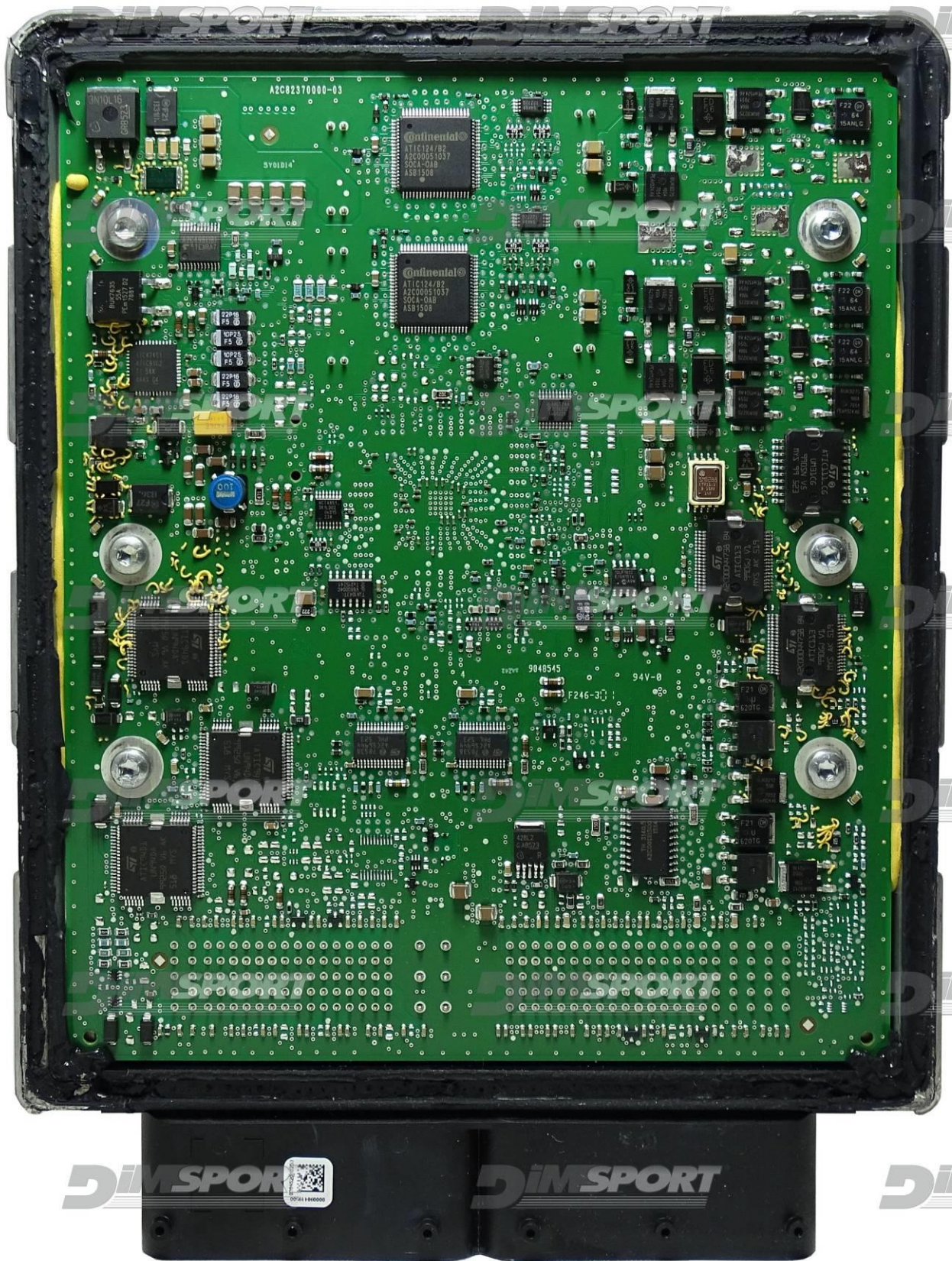
plugin 1566



plugin 1631



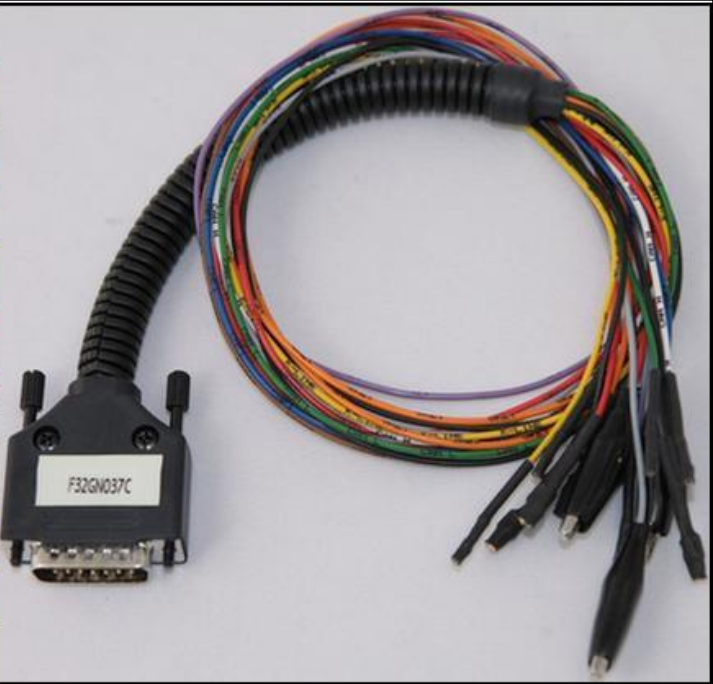
CONTINENTAL SDI10.2 SDI10.3 IROM TC1797 SSM PORSCHE



DIRECT CONNECTION

In order to connect to the ECU use the cable F32GN037C/D.
Make sure that the POWER led (red) on Trasdata is ON.

| COLORE FILO WIRE COULOR | DESCRIZIONE DESCRIPTION |
|-----------------------------|--|
| ROSSO RED | POSITIVO DIRETTO POWER BATTERY |
| ARANCIO ORANGE | POSITIVO SOTTO QUADRO POWER SWITCH ON |
| NERO BLACK | MASSA GND |
| GIALLO YELLOW | KLINE |
| VERDE GREEN | CAN LOW |
| BIANCO WHYTE | CAN HIGH |
| GRIGIO GREY | POL4 BOOT |
| BLU BLUE | POL5 CNF1 |
| VIOLA/GRIGIO PURPLE/GREY | TENSIONE PROG. PROG. VOLTAGE |
| MARRONE GREY | RESET |



Due to the relevant power absorbed by the ECU at the beginning of the communication it is necessary to feed the ECU with an external power supply or a car battery. Connect the power cable F32GN003 to the Trasdata and then to the power source. The ECU must be powered through the Trasdata using the F32GN037C/D cable.



ECU CONNECTOR



BOOT & CNF1 DIRECT CONNECTION

Connect the GREY and BLUE wires of the cable F32GN037C/D as shown in the picture.

| COLORE FILO WIRE COLOUR | DESCRIZIONE DESCRIPTION |
|----------------------------|----------------------------|
| GRIGIO GREY | POL4 BOOT |
| BLU BLUE | POL5 CNF1 |

