

DELPHI CRD2.XX MPC5566 MEB

plugin **248**

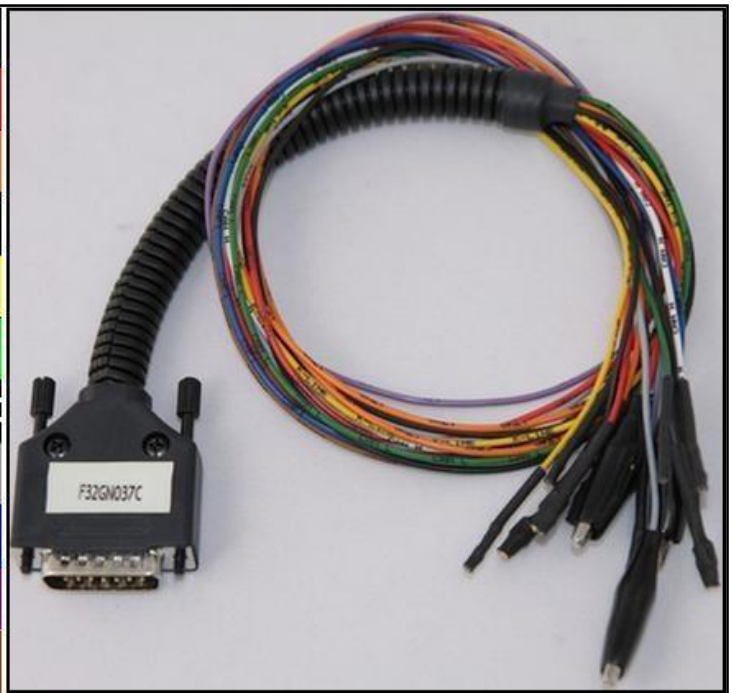
DIRECT CONNECTION

In order to connect to the ECU use the CABLE F32GN037C.

Make sure that the POWER led (red) on Trasdata is ON.

These connections are required for both loose wires and metal positioning frame connections

COLORE FILO WIRE COLOUR	DESCRIZIONE DESCRIPTION
ROSSO RED	POSITIVO DIRETTO POWER BATTERY
ARANCIO ORANGE	POSITIVO SOTTO QUADRO POWER SWITCH ON
NERO BLACK	MASSA GND
GIALLO YELLOW	KLINE
VERDE GREEN	CAN LOW
BIANCO WHITE	CAN HIGH
GRIGIO GREY	POL4 BOOT
BLU BLUE	POL5 CNF1
VIOLA/GRIGIO PURPLE/GREY	TENSIONE PROG. PROG. VOLTAGE
MARRONE BROWN	RESET



ECU CONNECTOR



DELPHI CRD2.XX MPC5566 MEB

J-TAG FREE WIRING CONNECTION

Connect the F34NTF53 wiring as explained here below :

Pin	Colore Colour
11	Non usato Not used
12	Non usato Not used
13	Non usato Not used
14	Non usato Not used
15	Non usato Not used
16	Blu Blue
17	Viola Violet
18	Grigio Grey
19	Bianco White
20	Nero Black
21	Marrone Brown
22	Rosso Red
23	Non usato Not used
24	Giallo Yellow
25	Non usato Not used
26	Non usato Not used



DELPHI CRD2.XX MPC5566 MEB

ECU equipped with OM651 SOLENOID system

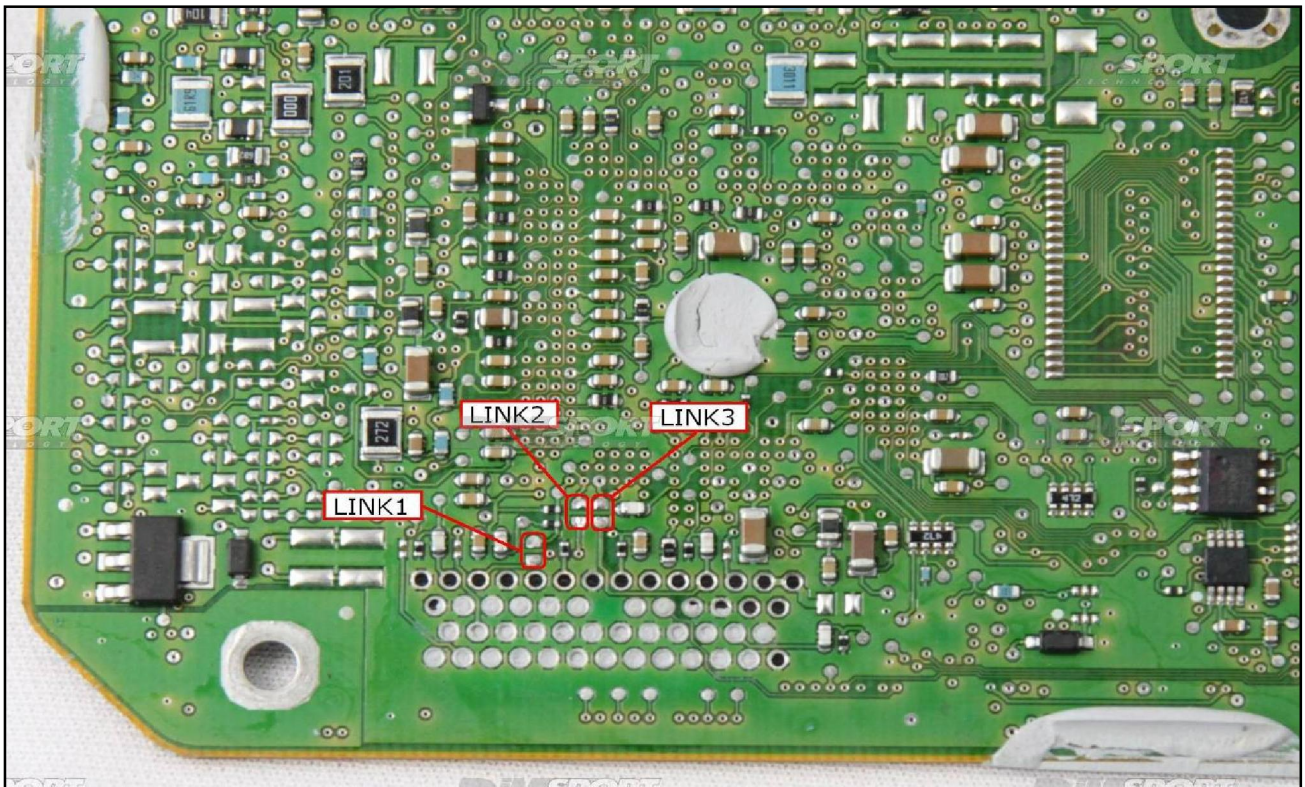


DELPHI CRD2.XX MPC5566 MEB

The lay-by pins are placed in the lower part of the ECU.

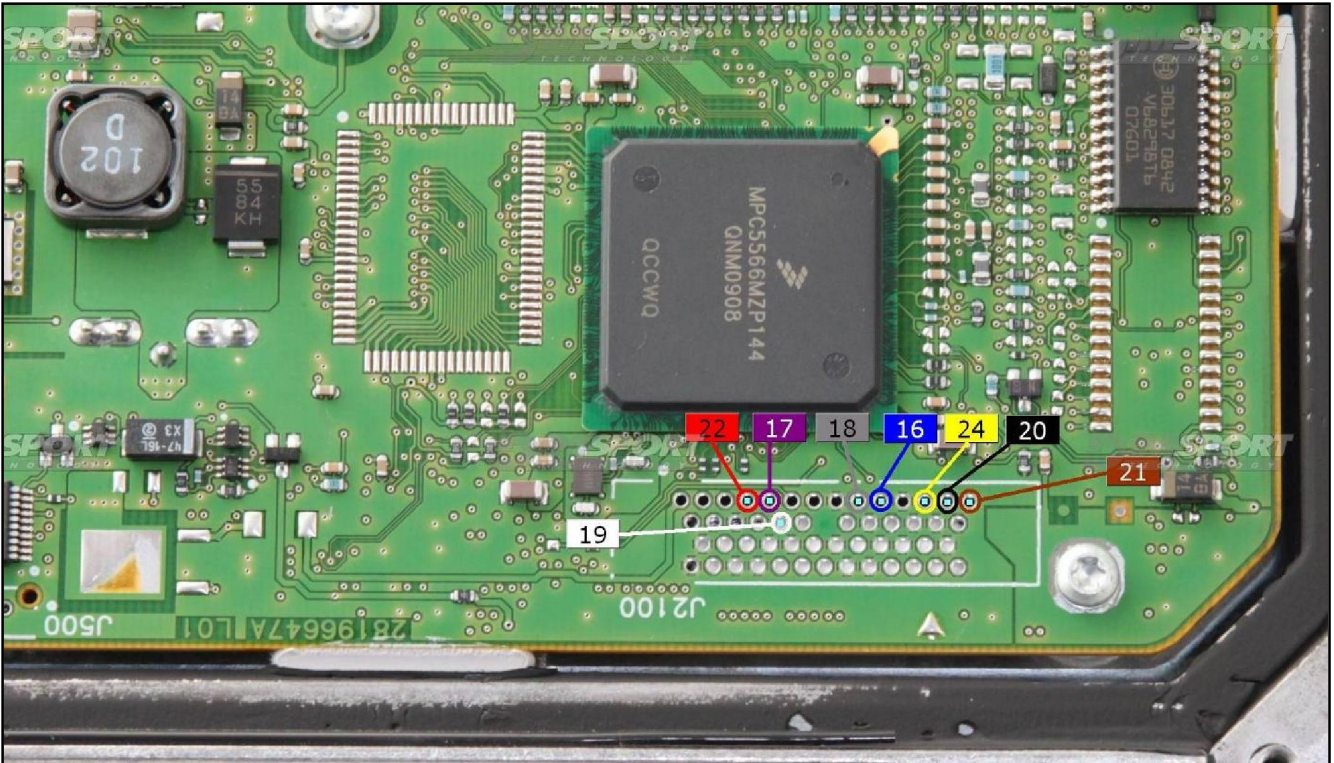
WARNING:

in order to communicate with the ECU it is necessary to open completely the ECU and perform a little bridge among three different pads placed on the lower part of the motherboard. Such operation is mandatory for a correct power feeding between the microprocessor and the JTAG pads. After the complete opening of the ECU, please, set back the ECU into the vehicle and check that it starts properly. After it will be possible to proceed with the bridge soldering as shown in the following pictures; the bridge among the three pads can be left inside the ECU.



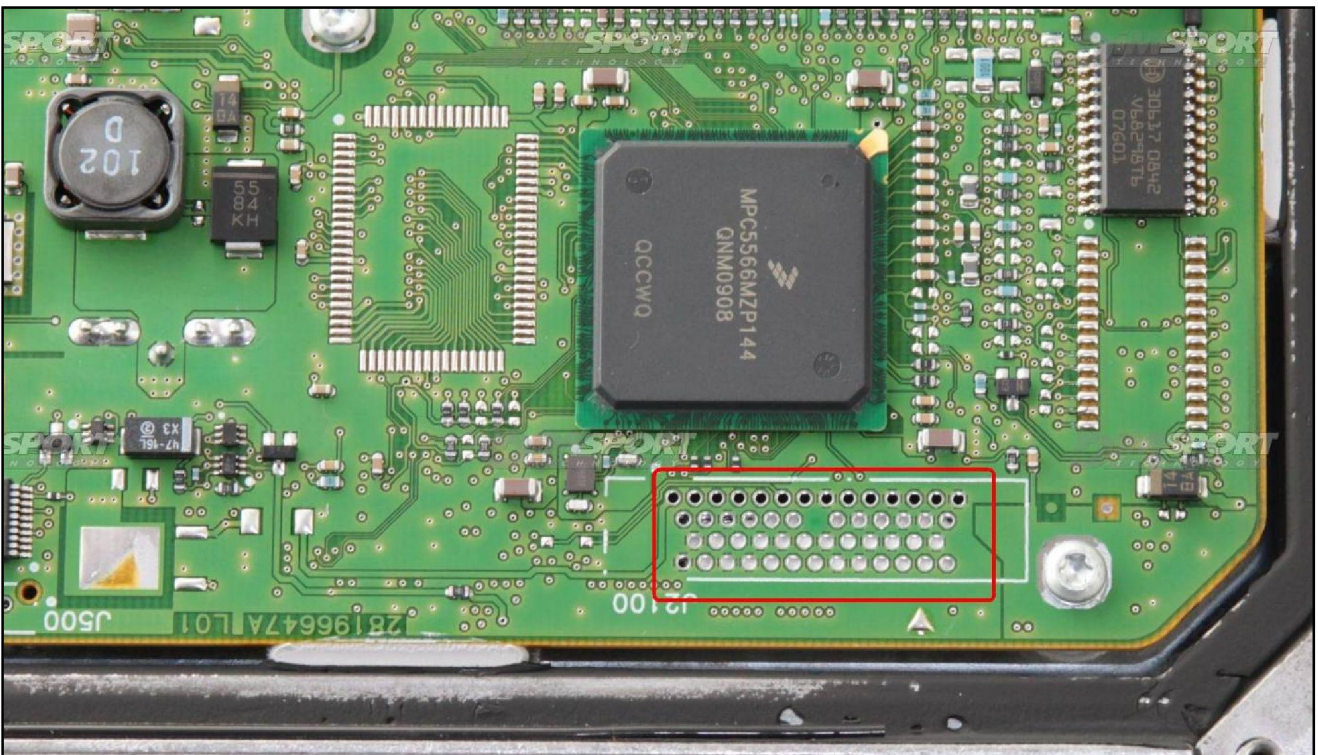
DELPHI CRD2.XX MPC5566 MEB

WARNING: solder the wires without creating any short circuits among the pads.



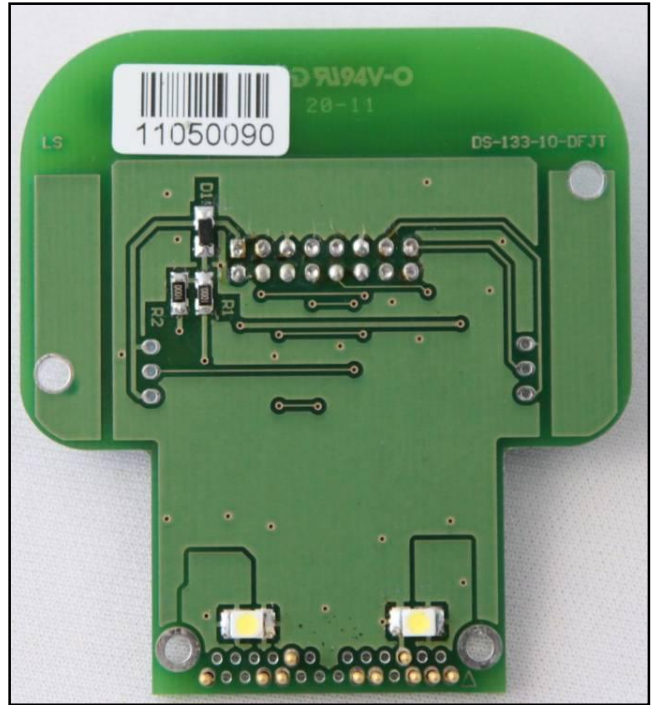
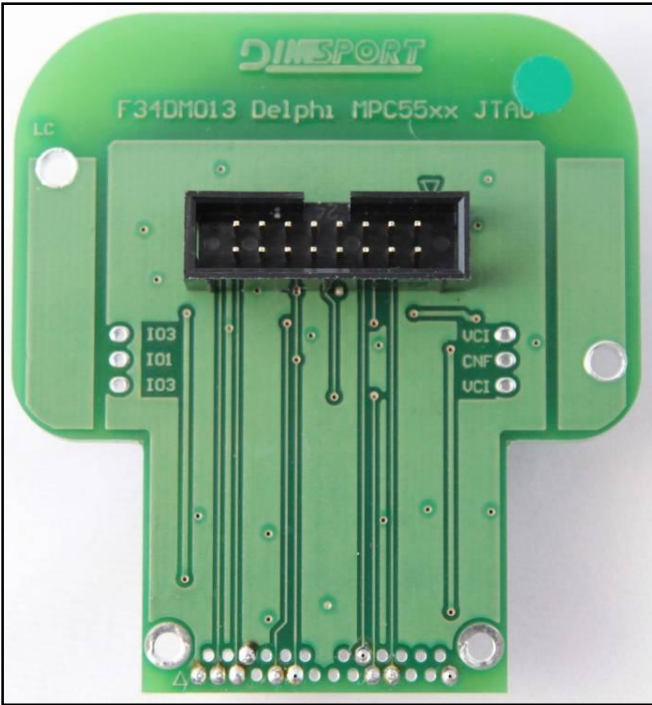
METAL POSITIONING FRAME CONNECTION

JTAG communication pads are placed under the microprocessor.

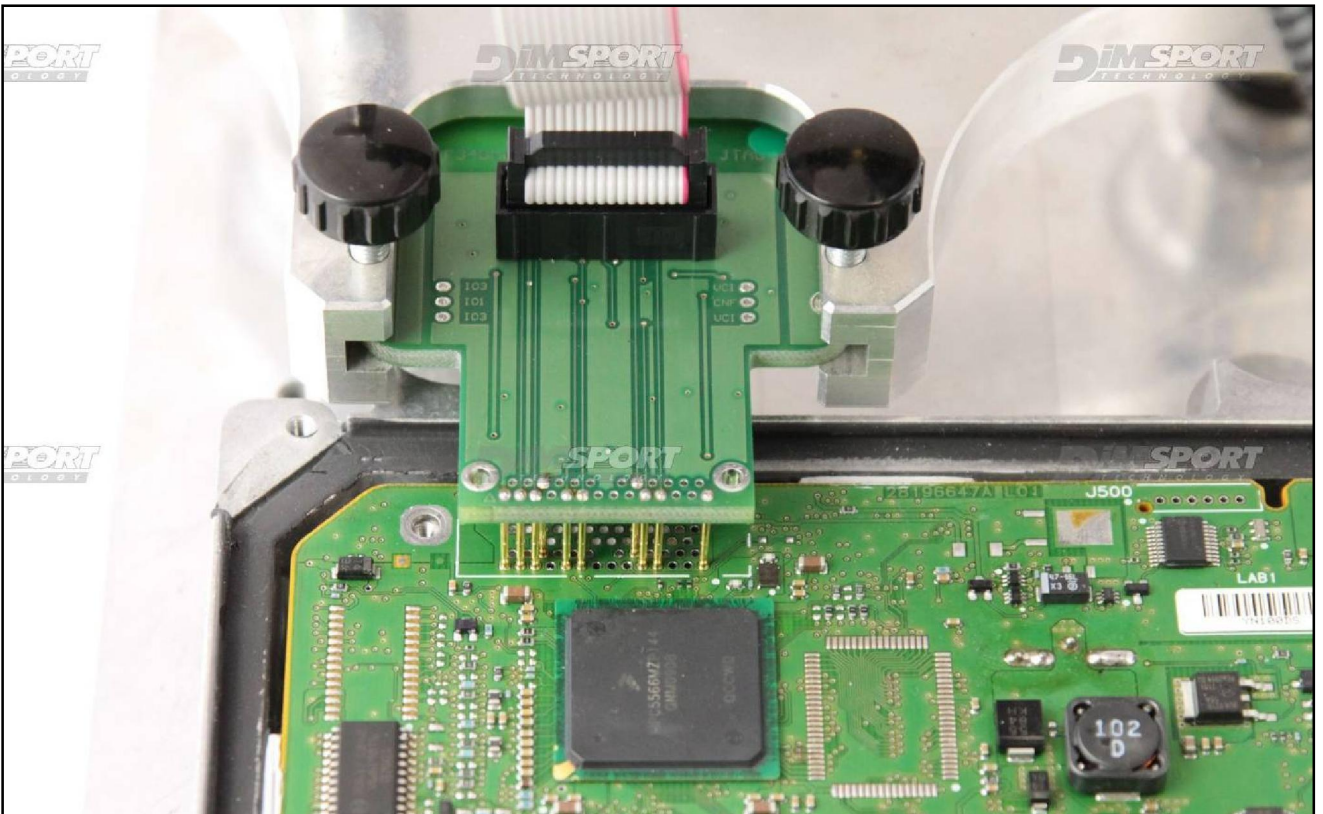


DELPHI CRD2.XX MPC5566 MEB

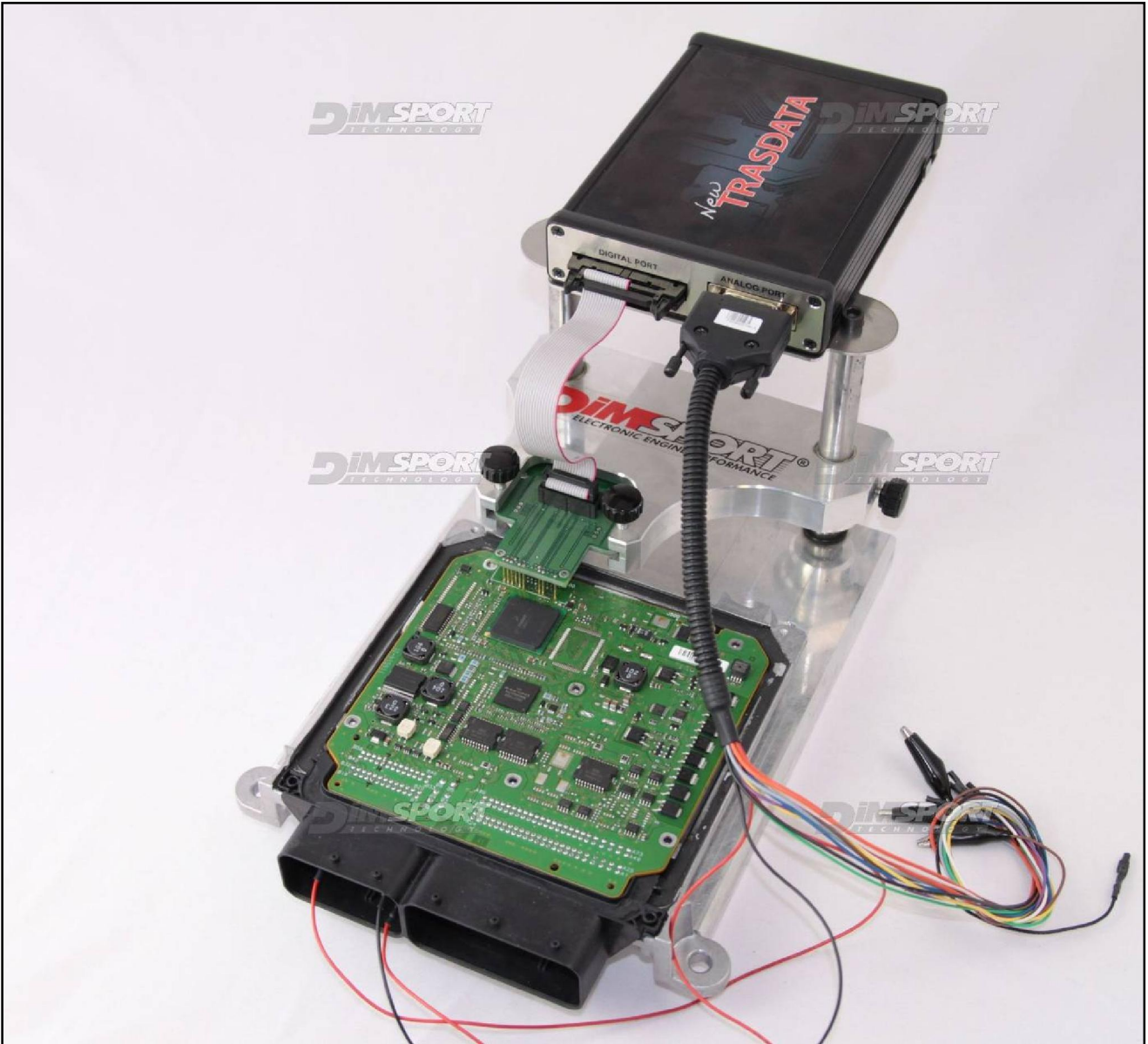
Use the F34DM013 adapter



Place the adapter F34DM013 as shown here below.

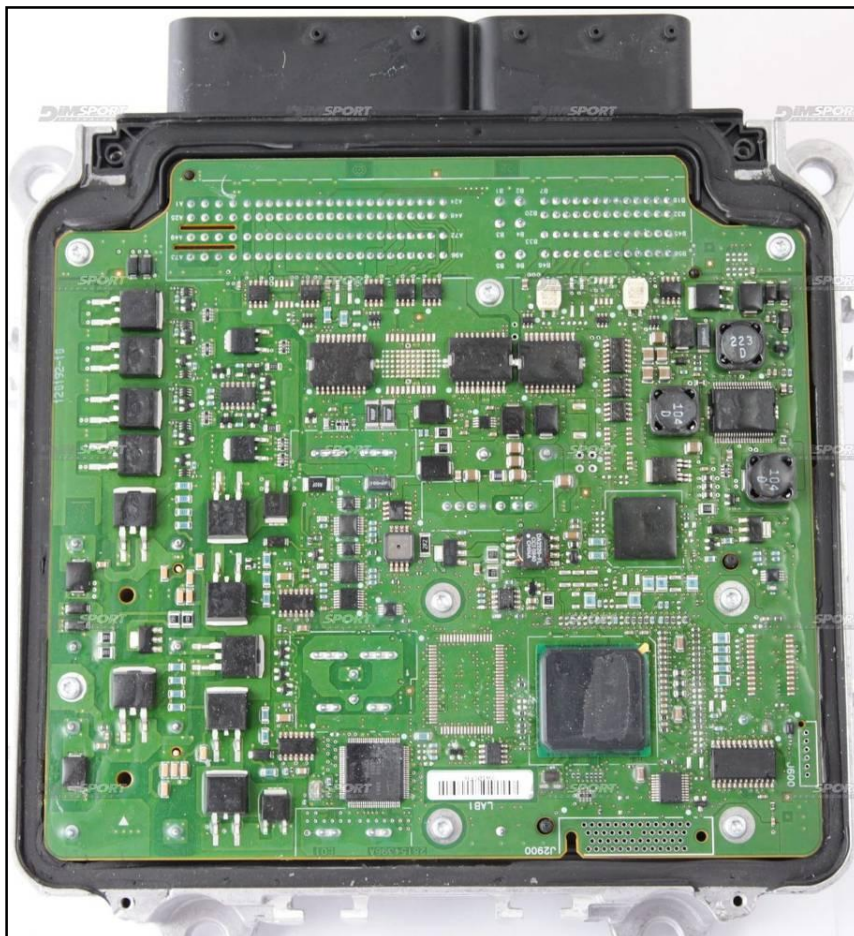


DELPHI CRD2.XX MPC5566 MEB



DELPHI CRD2.XX MPC5566 MEB

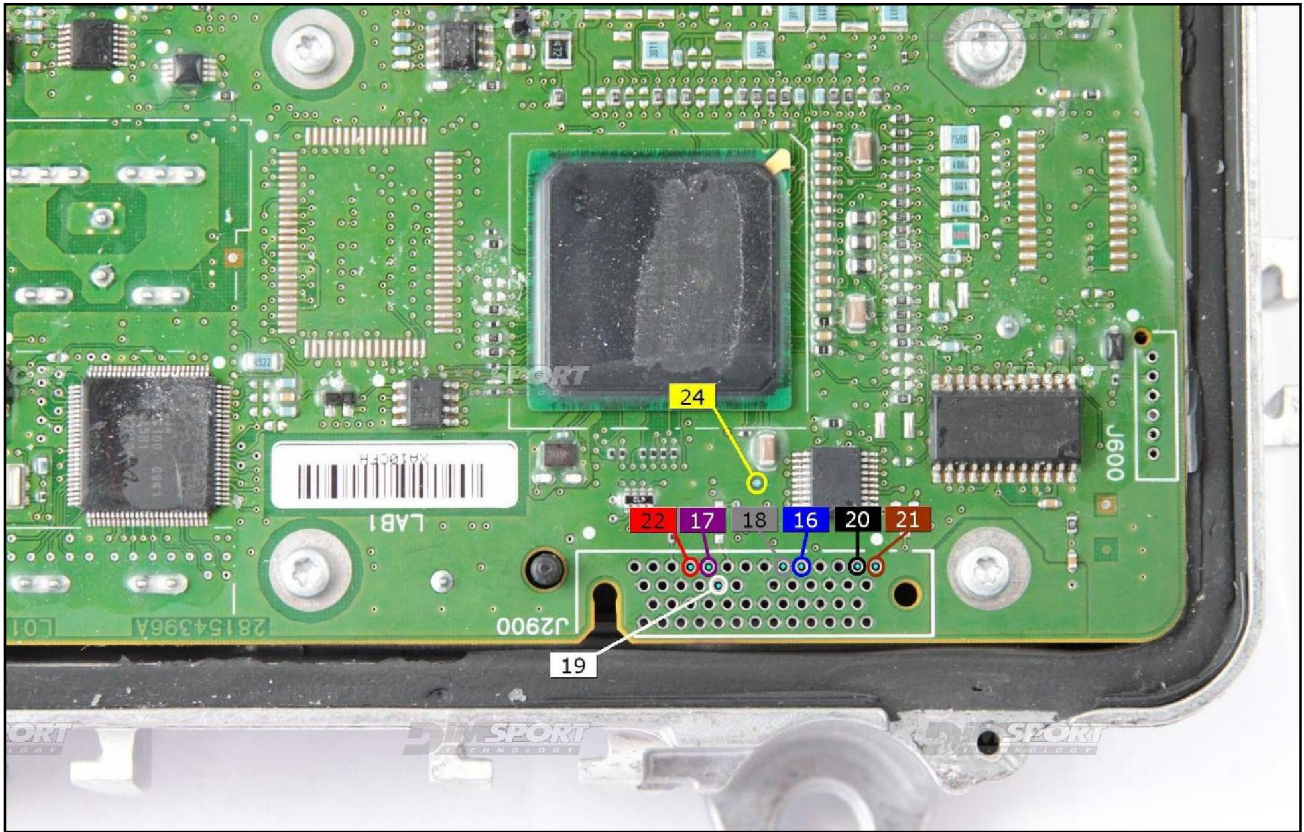
ECU equipped with the OM651 PIEZOTEC system



DELPHI CRD2.XX MPC5566 MEB

The lay-by pins are placed in the lower part of the ECU

WARNING: solder the wires without creating any short circuits among the pads.



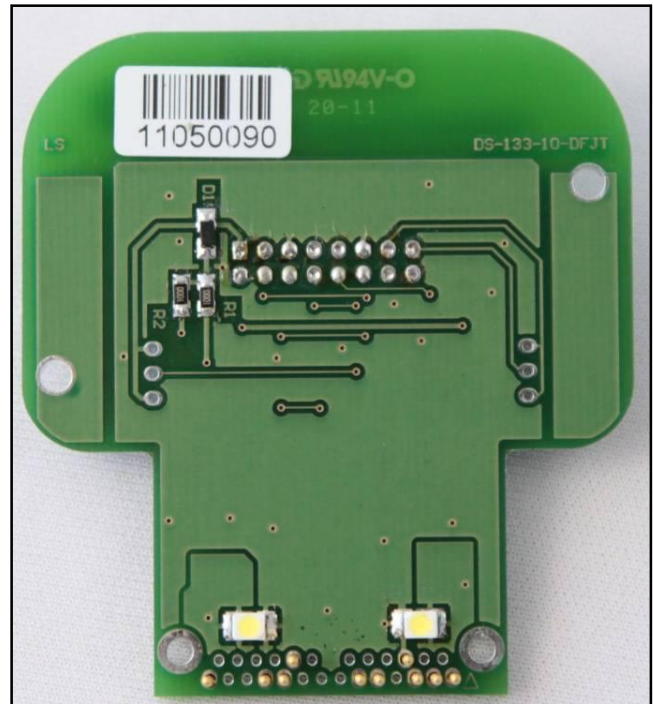
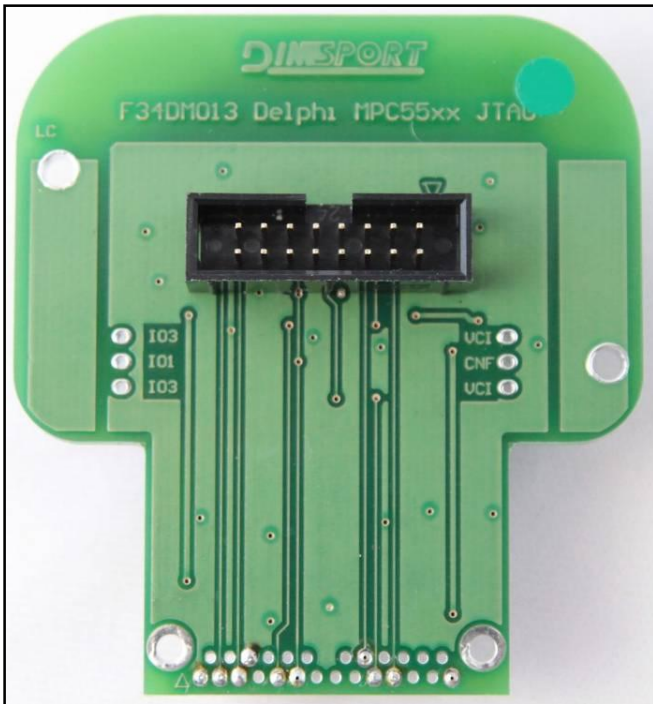
METAL POSITIONING FRAME CONNECTION

JTAG pads are placed under the microprocessor. It is necessary to make a little bridge in order to link pads with the 24 pin signal. Remove the bridge at the end of the procedure.



DELPHI CRD2.XX MPC5566 MEB

Use the F34DM013 adapter



DELPHI CRD2.XX MPC5566 MEB

