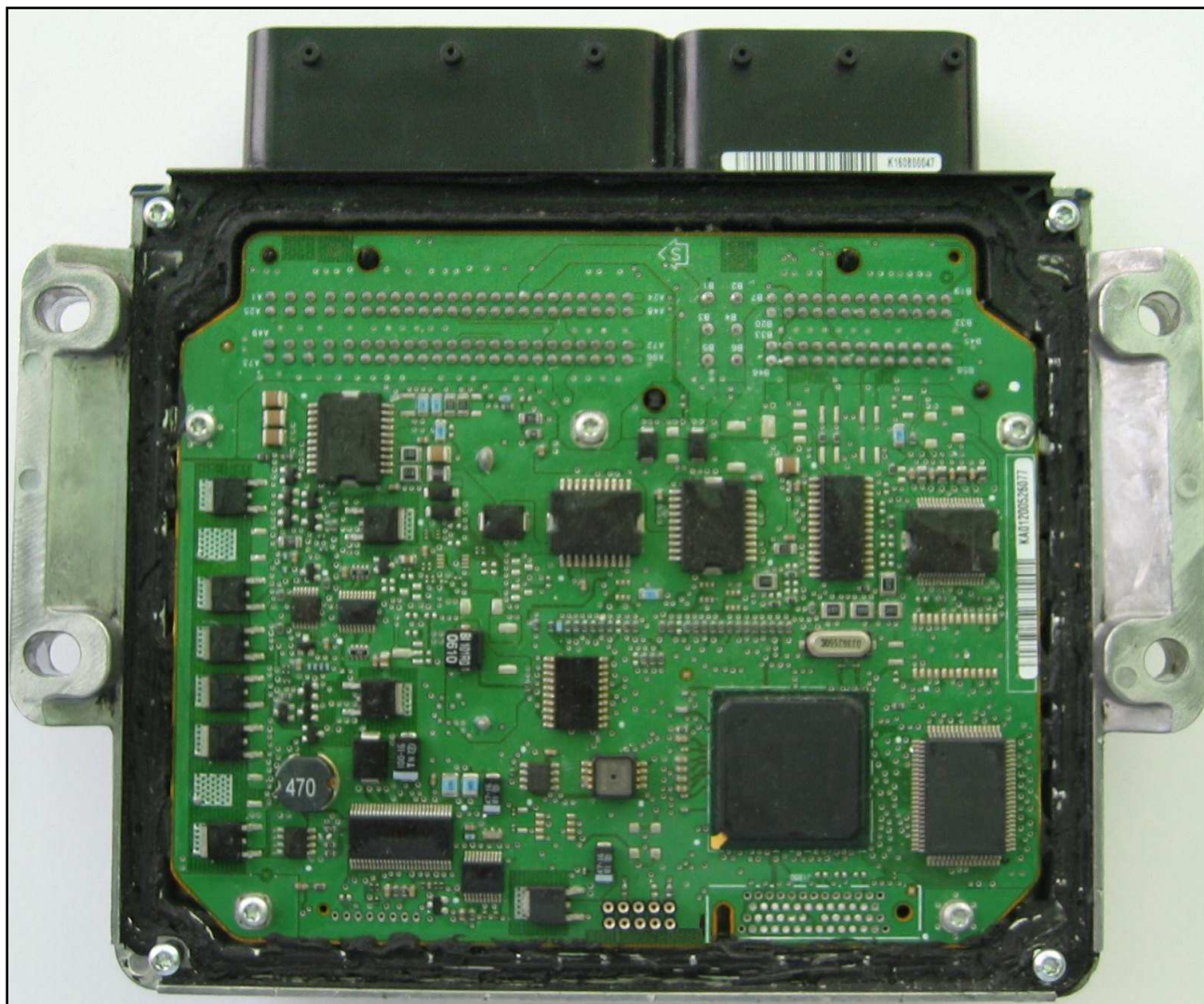


DELPHI DCM3.2

plugin 112

The lay-by pins are placed in the right lower part of the ECU, as shown in the picture.



DELPHI DCM3.2

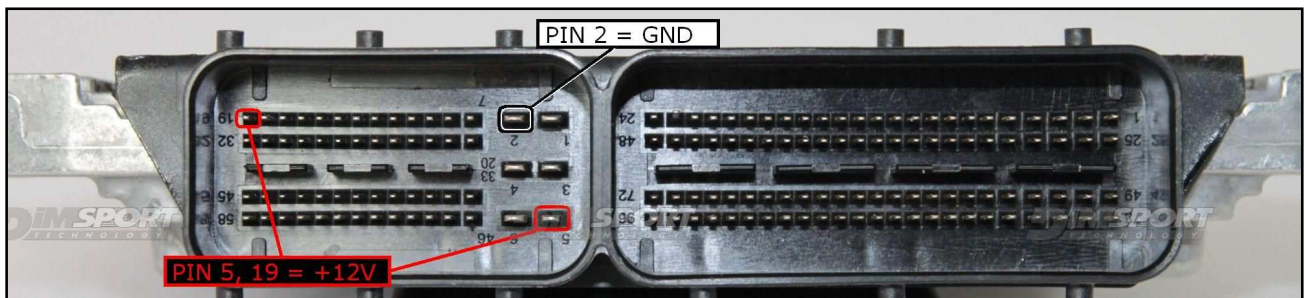
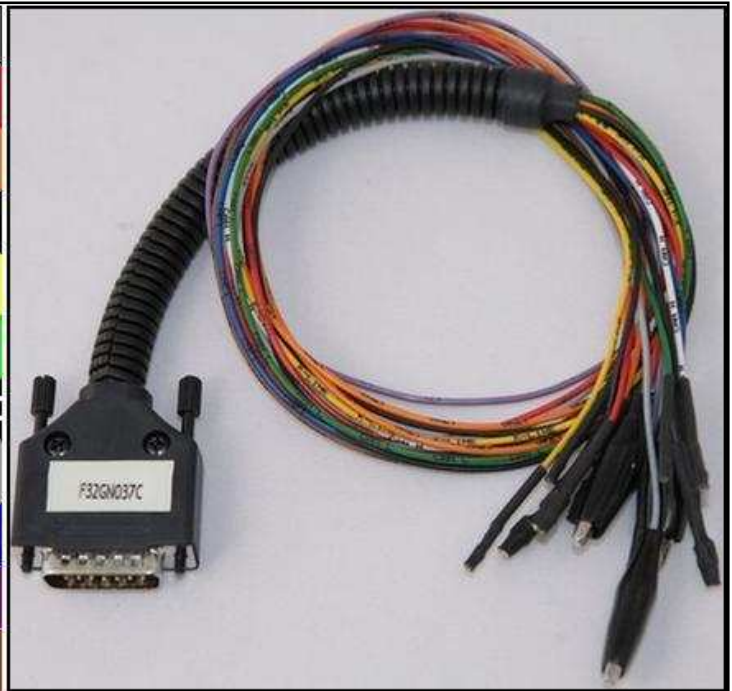
ECU CONNECTOR

In order to connect to the ECU use the CABLE F32GN037C.

Make sure that the POWER led (red) on Trasdata is ON.

These connections are required for all the connection approaches: soldering adapter and metal positioning frame adapter.

COLORE FILO WIRE COLOUR	DESCRIZIONE DESCRIPTION
ROSSO RED	POSITIVO DIRETTO POWER BATTERY
ARANCIO ORANGE	POSITIVO SOTTO QUADRO POWER SWITCH ON
NERO BLACK	MASSA GND
GIALLO YELLOW	KLINE
VERDE GREEN	CAN LOW
BIANCO WHITE	CAN HIGH
GRIGIO GREY	POL4 BOOT
BLU BLUE	POL5 CNF1
VIOLA/GRIGIO PURPLE/GREY	TENSIONE PROG. PROG. VOLTAGE
MARRONE BROWN	RESET

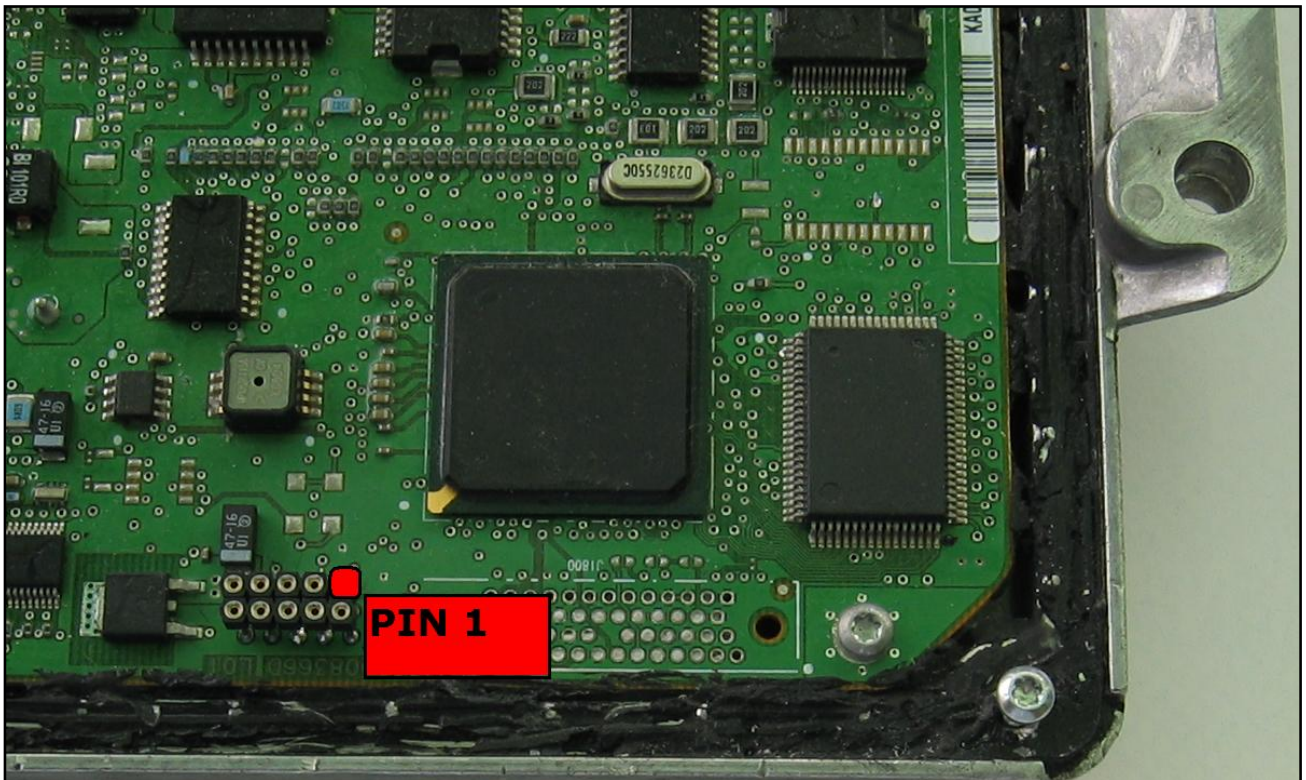
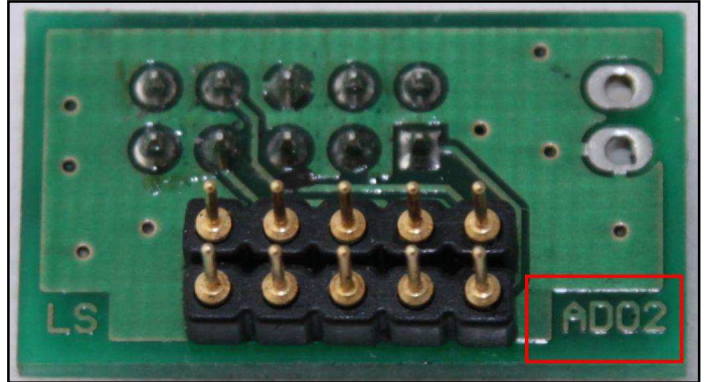
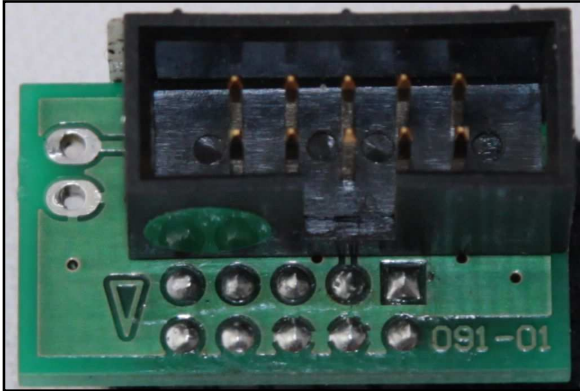


DELPHI DCM3.2

DIRECT CONNECTION with F34NTA09 adapter

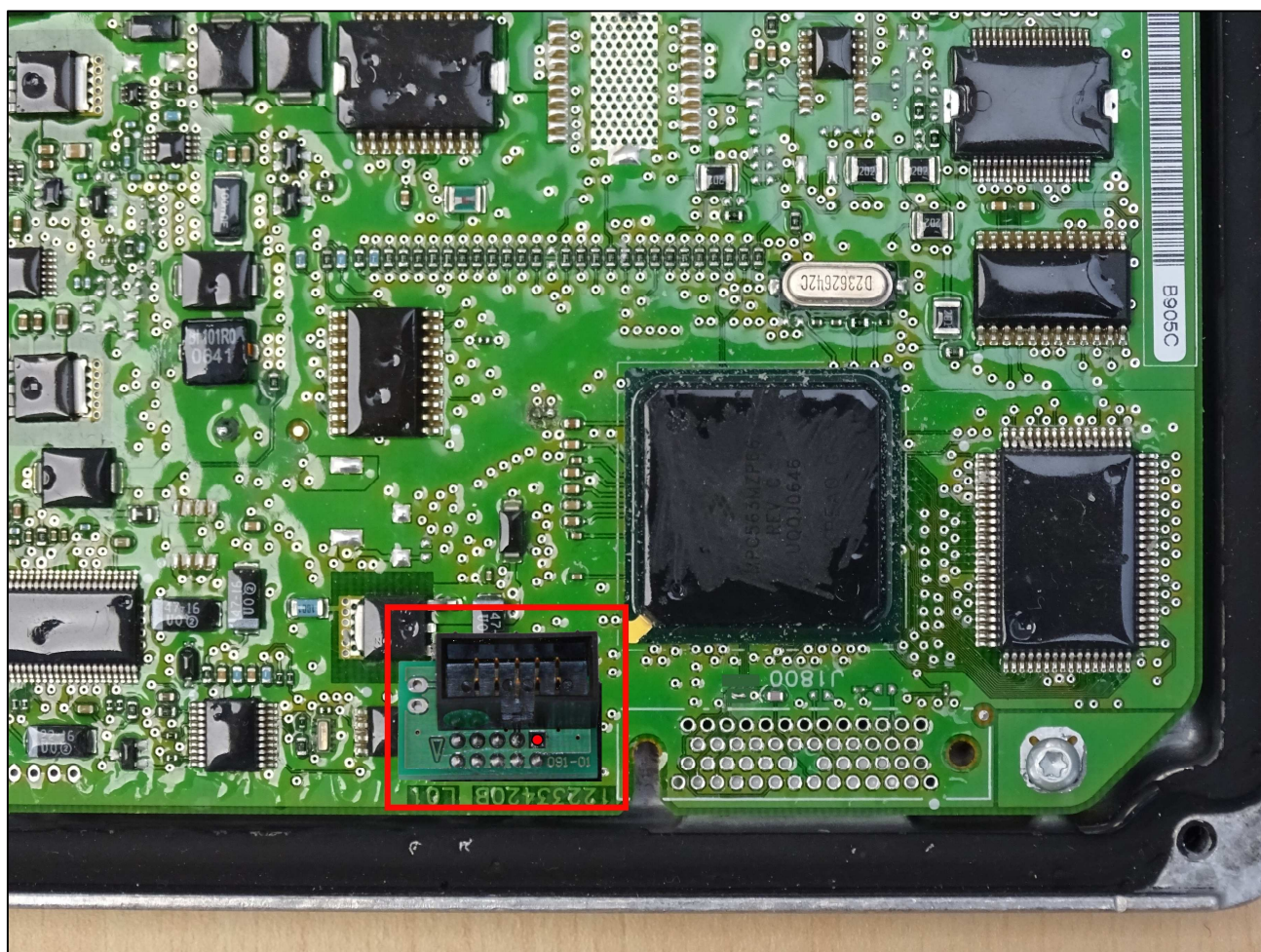
Connect the F34NTA09 adapter as shown in the picture.

WARNING: F34NTA09 adapter can be identified by the code AD02 written on the PCB.



DELPHI DCM3.2

Connect the F34NTA09 adapter as shown in the following picture, the following picture is merely indicative.



DELPHI DCM3.2

METAL POSITIONING FRAME CONNECTION

For the metal positioning frame connection is required the F34DM009 adapter

