

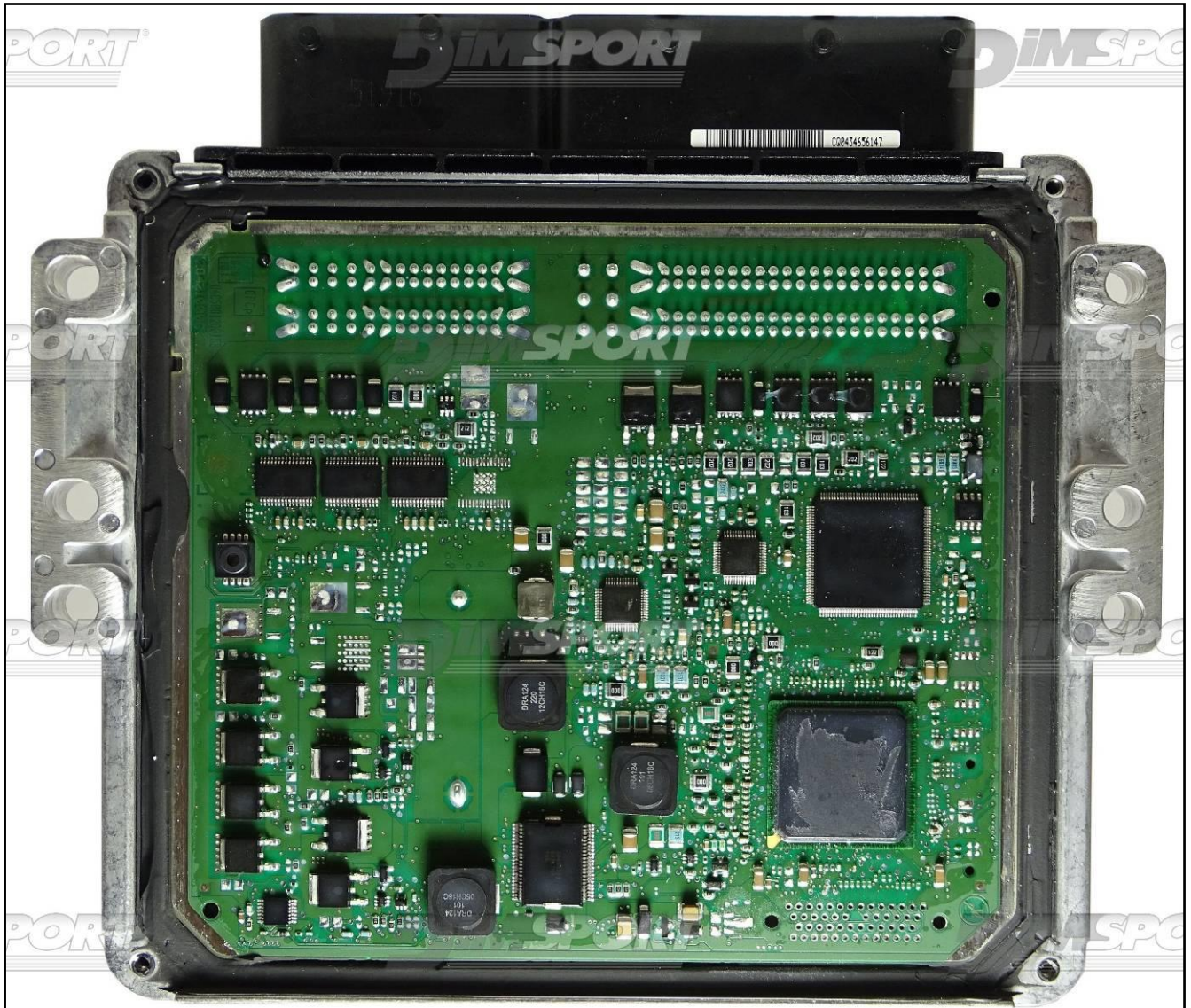
# DELPHI DCM6.2AP BAM GWM

**plugin:** 1381 DELPHI DCM6.2AP BAM  
GWM

1483 DELPHI DCM6.2AP BAM JAC  
1617 DELPHI DCM6.2AP BAM ISUZU



DELPHI DCM6.2AP BAM GWM

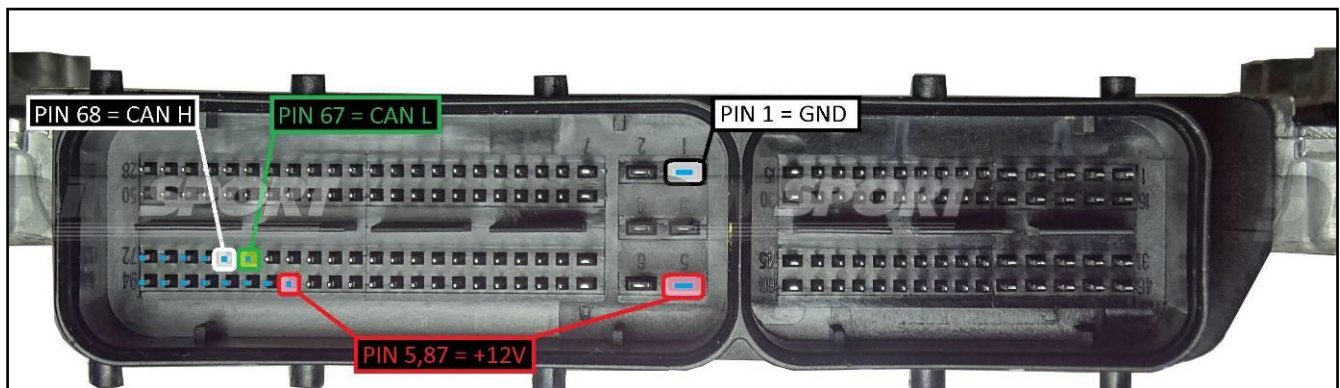
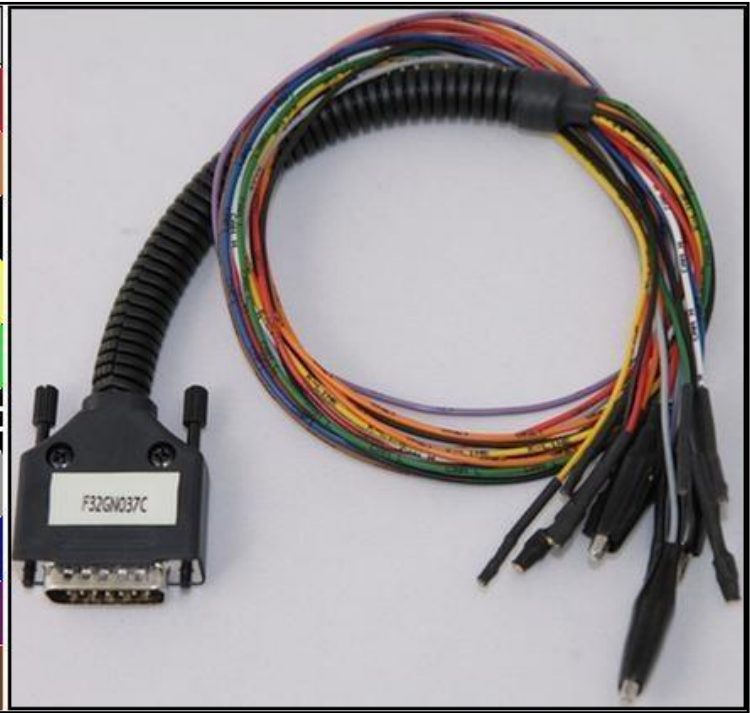


# DELPHI DCM6.2AP BAM GWM

## ECU CONNECTOR

In order to connect to the ECU use the cable F32GN037C/D.  
Make sure that the POWER led (red) on Trasdata is ON.

COLORE FILO WIRE COLOUR	DESCRIZIONE DESCRIPTION
ROSSO RED	POSITIVO DIRETTO POWER BATTERY
ARANCIO ORANGE	POSITIVO SOTTO QUADRO POWER SWITCH ON
NERO BLACK	MASSA GND
GIALLO YELLOW	KLINE
VERDE GREEN	CAN LOW
BIANCO WHITE	CAN HIGH
GRIGIO GREY	POL4 BOOT
BLU BLUE	POL5 CNF1
VIOLA/GRIGIO PURPLE/GREY	TENSIONE PROG. PROG. VOLTAGE
MARRONE BROWN	RESET



## DELPHI DCM6.2AP BAM GWM

### **DIRECT CONNECTION CNF1**

Connect the BLUE wire of the cable F32GN037C/D as described here below:

COLORE FILO WIRE COLOUR	DESCRIZIONE DESCRIPTION
BLU BLUE	CNF1

