

DENSO 255700 SH7058 SUBARU KUBOTA

**plugin 584**

**WARNING!** There are **TWO DIFFERENT HARDWARE TYPE!**

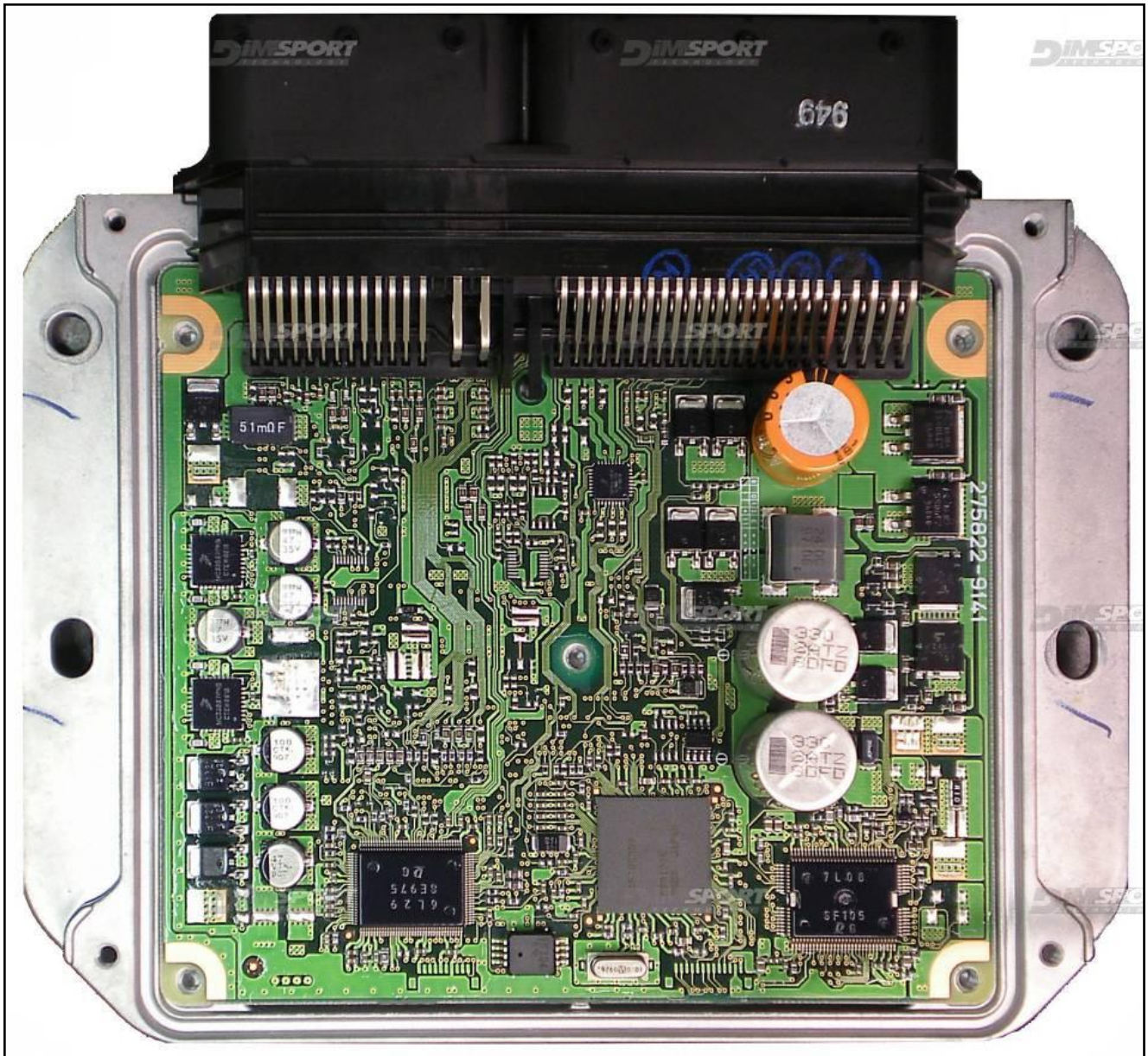
After opening the ECU check what ECU type is your one (TYPE 01 or TYPE 02)

Lay-by pins are placed in the lower side of the ECU.



DENSO 255700 SH7058 SUBARU KUBOTA

**ECU TYPE 01**

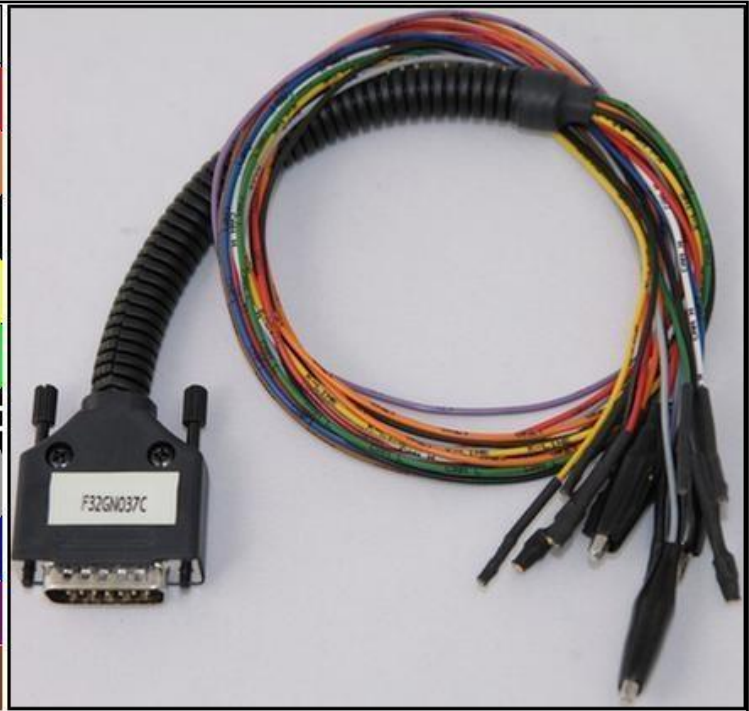


# DENSO 255700 SH7058 SUBARU KUBOTA

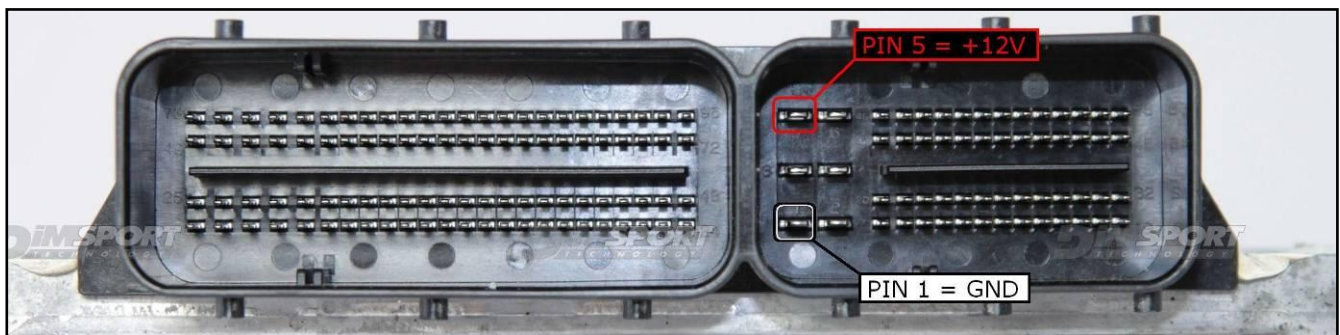
## DIRECT CONNECTION ECU TYPE 01

In order to connect to the ECU use the CABLE F32GN037C/D.  
Make sure that the POWER led (red) on Trasdata is ON.

COLORE FILO WIRE COLOUR	DESCRIZIONE DESCRIPTION
ROSSO RED	POSITIVO DIRETTO POWER BATTERY
ARANCIO ORANGE	POSITIVO SOTTO QUADRO POWER SWITCH ON
NERO BLACK	MASSA GND
GIALLO YELLOW	KLINE
VERDE GREEN	CAN LOW
BIANCO WHITE	CAN HIGH
GRIGIO GREY	POL4 BOOT
BLU BLUE	POL5 CNF1
VIOLA/GRIGIO PURPLE/GREY	TENSIONE PROG. PROG. VOLTAGE
MARRONE BROWN	RESET



## CONNECTOR ECU TYPE 01



### WARNING :

on this ECU you must use two different flat cables: one is for the READING procedure and one is for the WRITING procedure.

## DENSO 255700 SH7058 SUBARU KUBOTA

### **DIRECT CONNECTION – ECU TYPE 01 READING:**

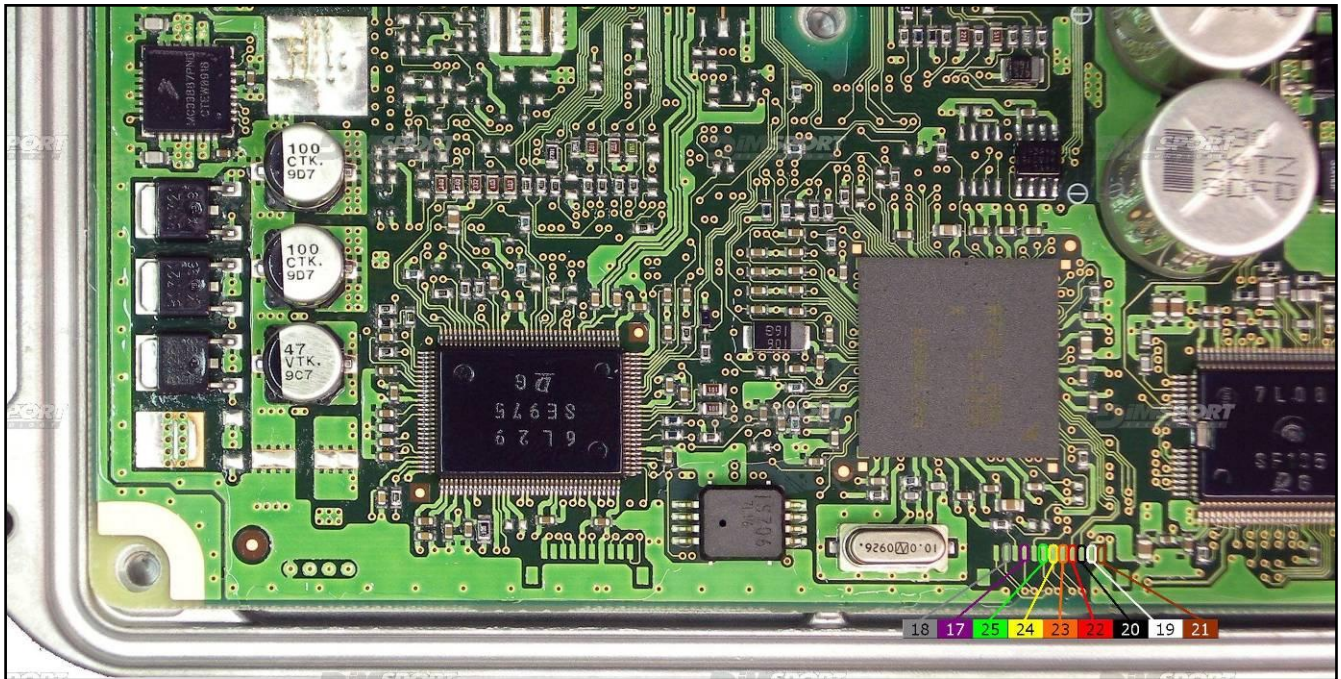
For the READING procedure use the FLAT cable F34NTF53

Pin	Colore Colour
11	Non usato Not used
12	Non usato Not used
13	Non usato Not used
14	Non usato Not used
15	Non usato Not used
16	Blu Blue
17	Viola Violet
18	Grigio Grey
19	Bianco White
20	Nero Black
21	Marrone Brown
22	Rosso Red
23	Arancio Orange
24	Giallo Yellow
25	Verde Green
26	Non usato Not used



## DENSO 255700 SH7058 SUBARU KUBOTA

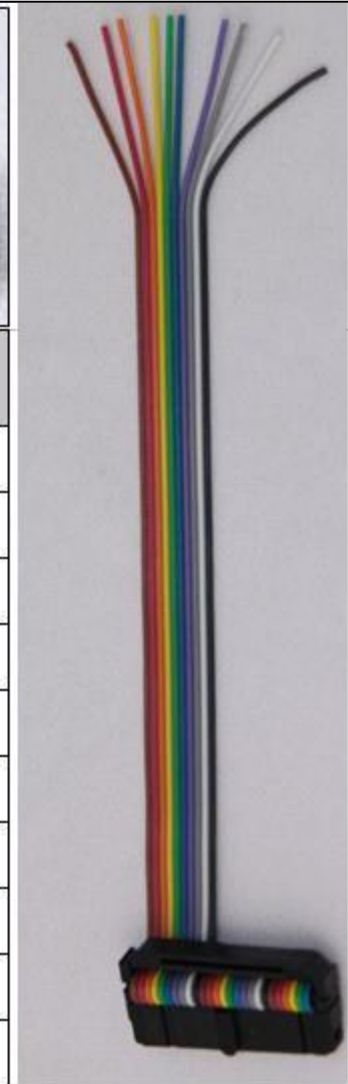
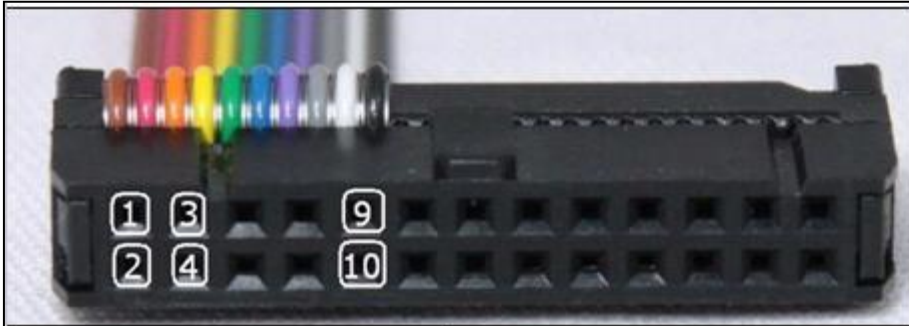
For a correct soldering procedure clean very well the soldering lay-by pins from the plastic film. We suggest you to use fine grit glass-paper smoothing by gentle pressure the connection lay by pins.



DENSO 255700 SH7058 SUBARU KUBOTA

**DIRECT CONNECTION – ECU TYPE 01 WRITING:**

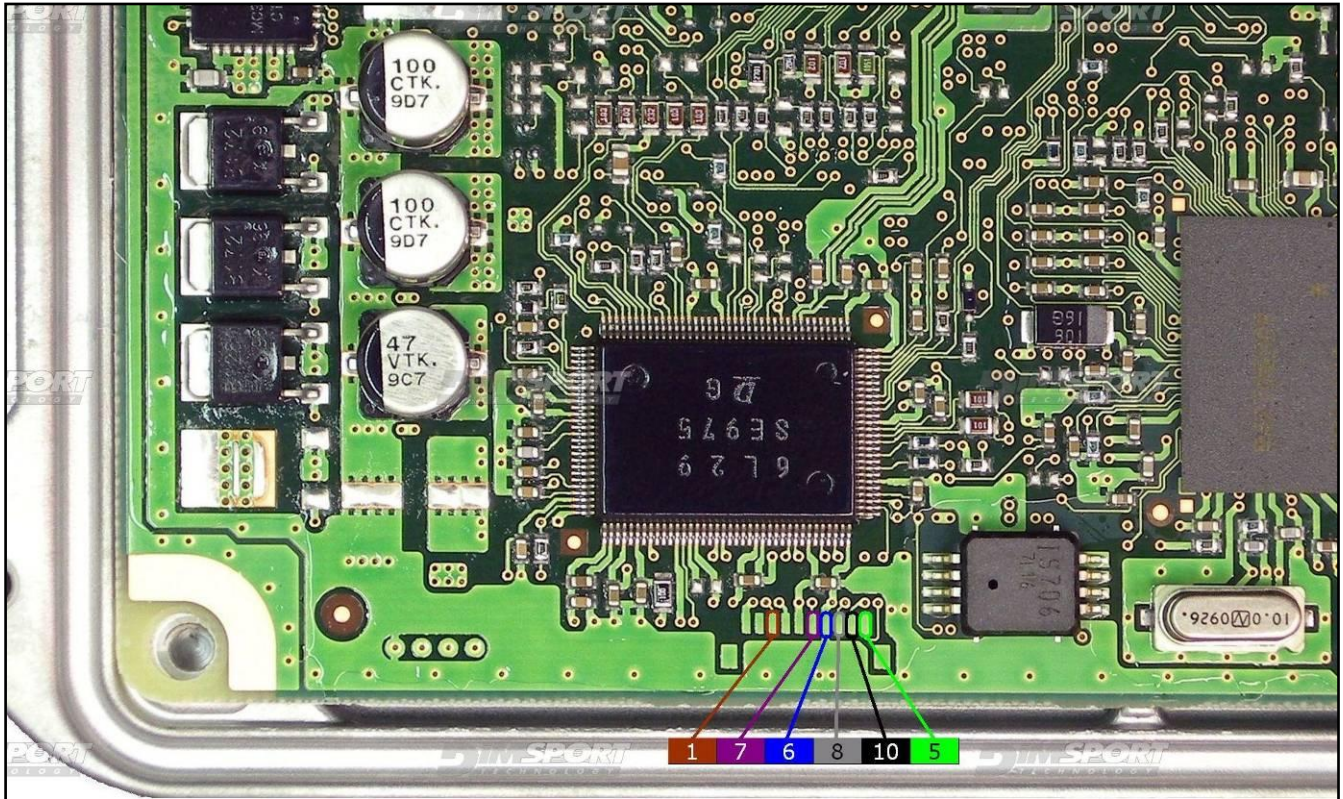
For the WRITING procedure use the FLAT cable F34NTF51



Pin	Colore Colour
1	Marrone Brown
2	Non usato Not used
3	Non usato Not used
4	Giallo Yellow
5	Verde Green
6	Blu Blue
7	Viola Violet
8	Grigio Grey
9	Bianco White
10	Nero Black

## DENSO 255700 SH7058 SUBARU KUBOTA

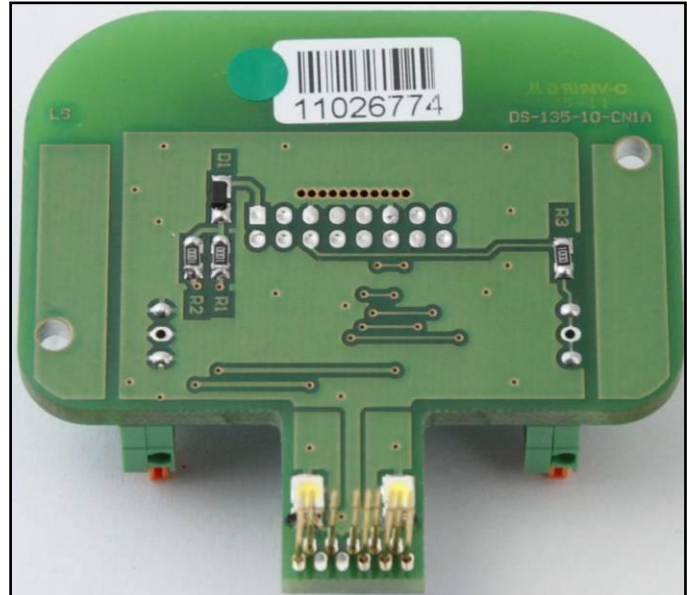
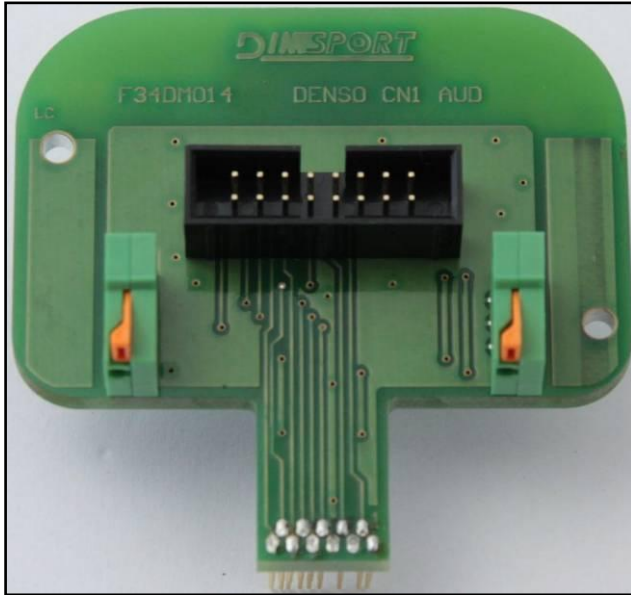
For a correct soldering procedure clean very well the soldering lay-by pins from the plastic film.  
We suggest you to use fine grit glass-paper smoothing by gentle pressure  
the connection lay by pins.



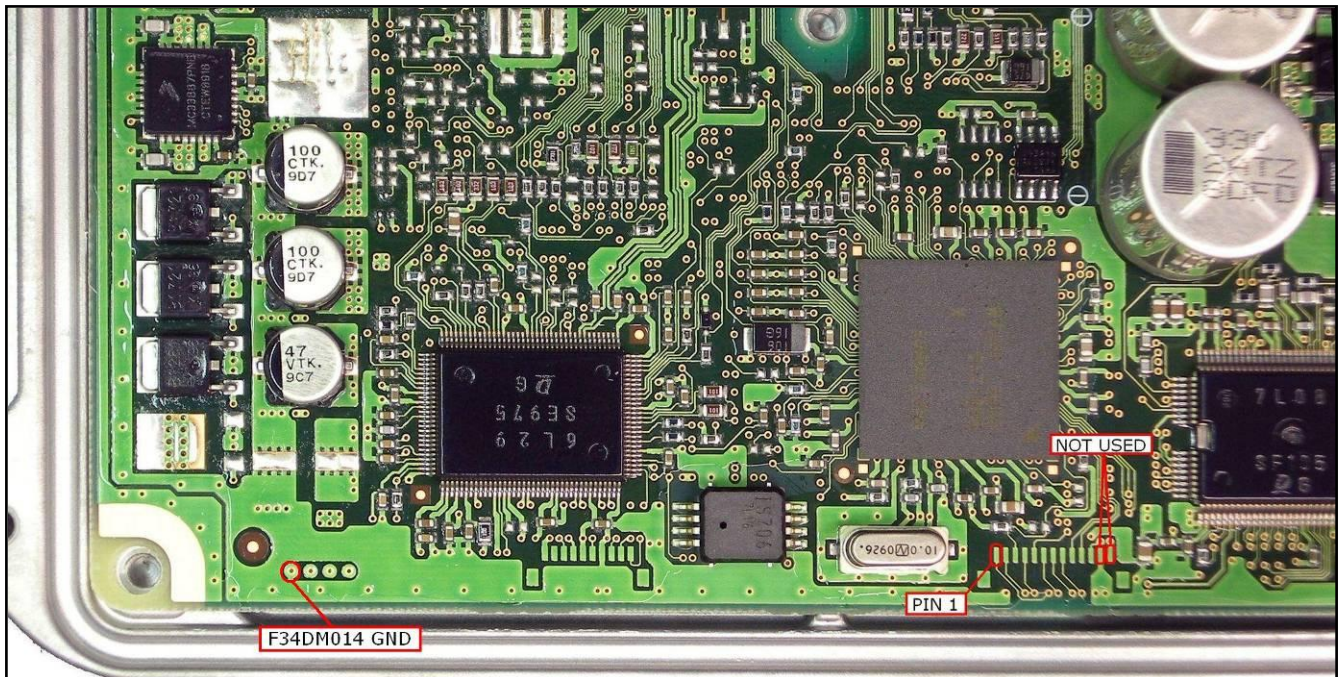
# DENSO 255700 SH7058 SUBARU KUBOTA

## METAL POSITIONING FRAME CONNECTION – ECU TYPE 01 READING

Power the ECU with the F32GN037C/D wiring. Use the metal positioning frame adapter F34DM014.

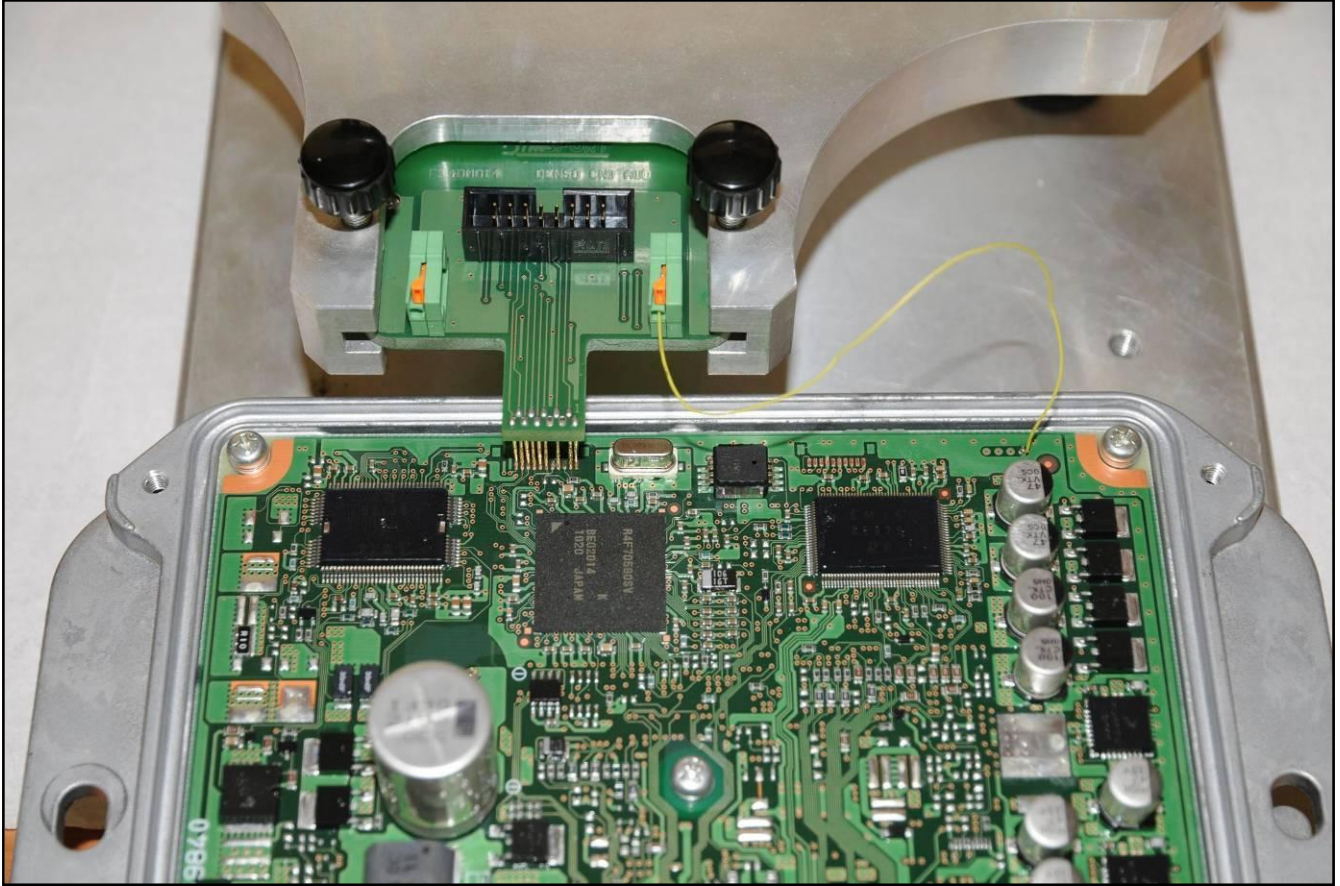


**WARNING:** while connecting the adapter F34DM014 take care of the PIN1 assignment.





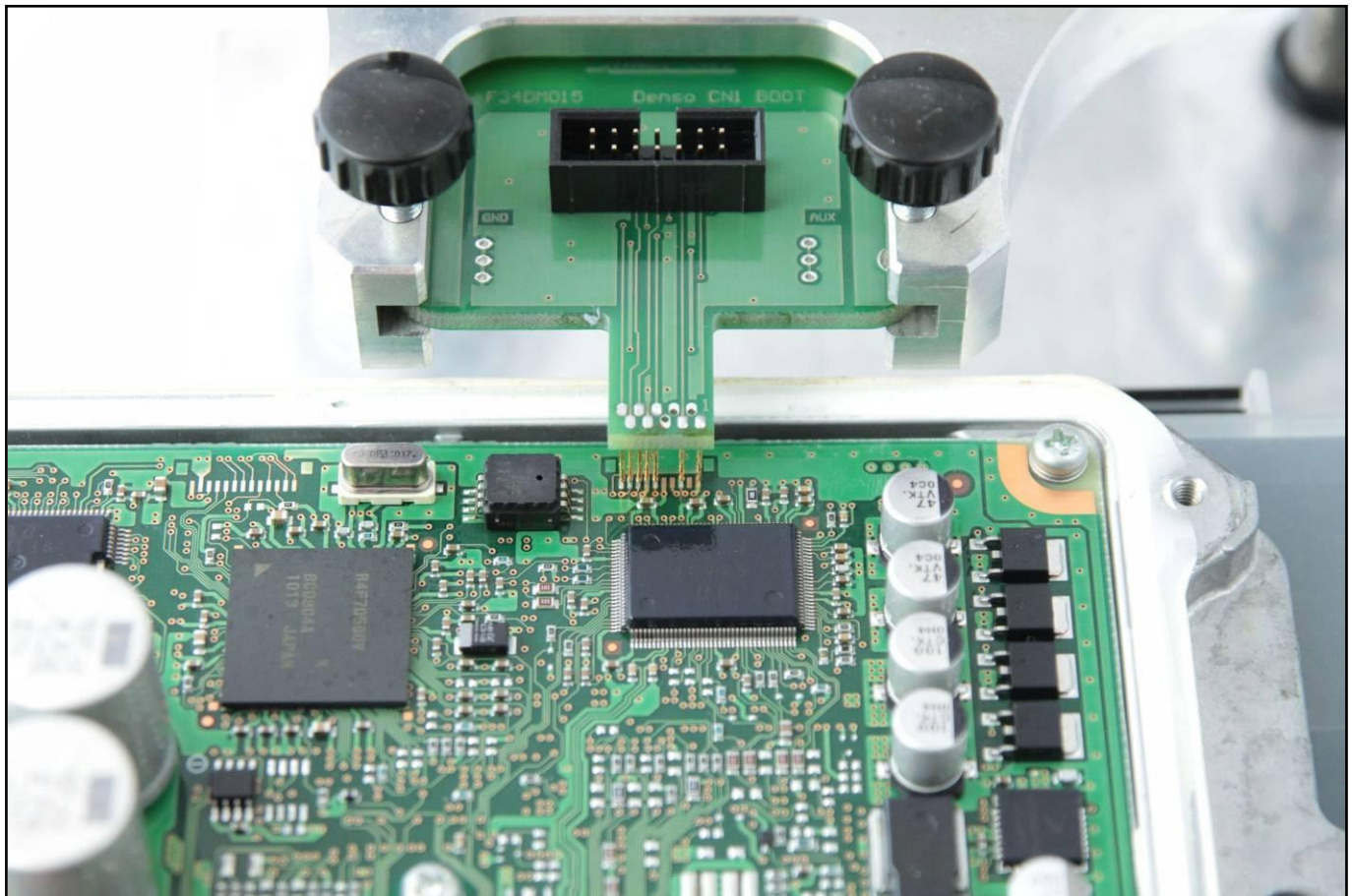
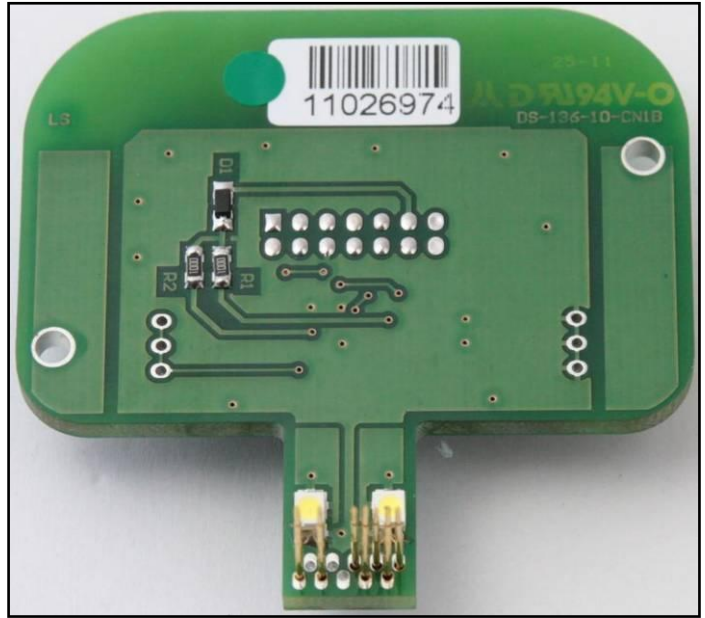
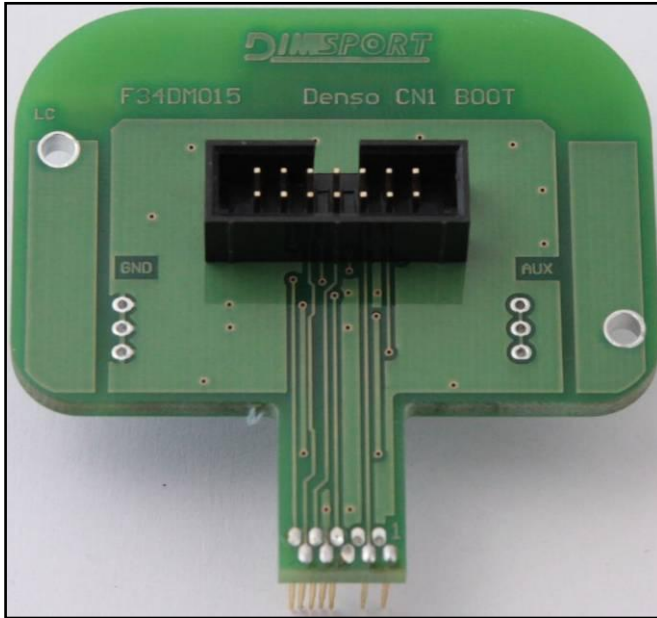
DENSO 255700 SH7058 SUBARU KUBOTA



# DENSO 255700 SH7058 SUBARU KUBOTA

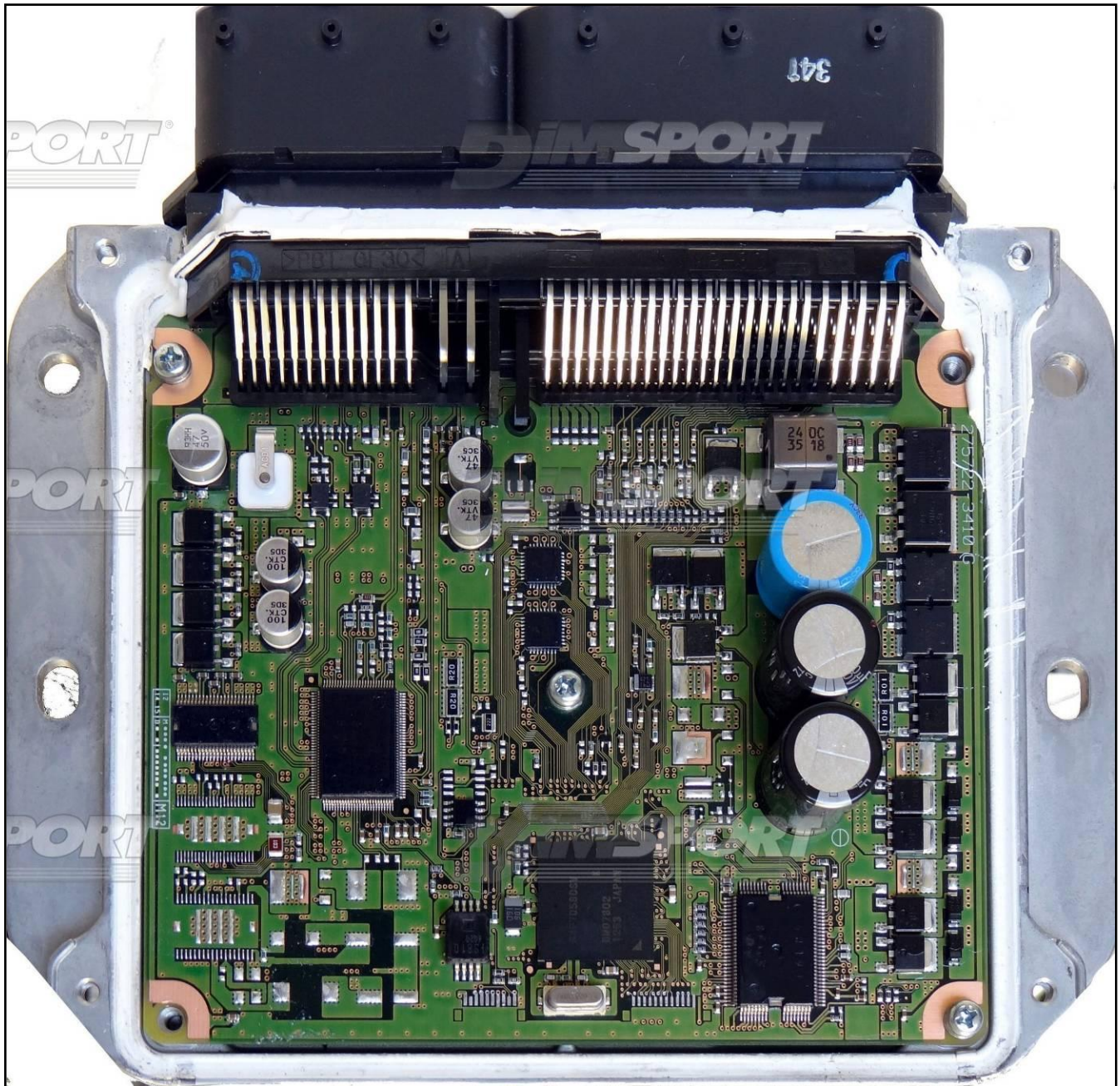
## METAL POSITIONING FRAME CONNECTION – ECU TYPE 01 WRITING

Power the ECU with the F32GN037C/D wiring. Use the metal positioning frame adapter F34DM015.



DENSO 255700 SH7058 SUBARU KUBOTA

ECU TYPE 02

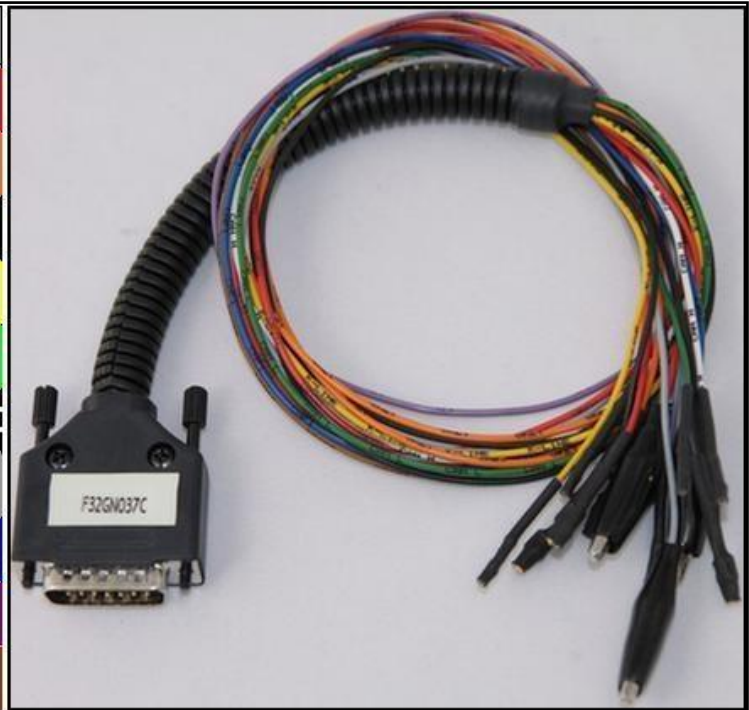


# DENSO 255700 SH7058 SUBARU KUBOTA

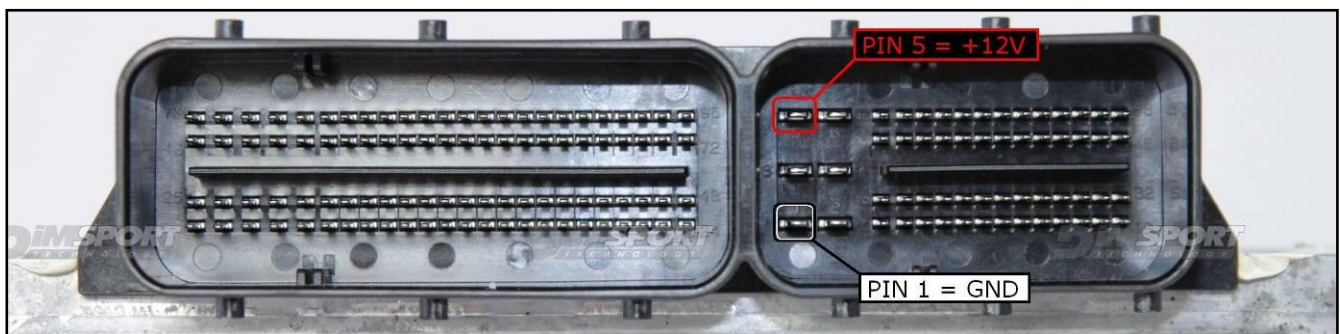
## DIRECT CONNECTION

In order to connect to the ECU use the CABLE F32GN037C/D.  
Make sure that the POWER led (red) on Trasdata is ON.

COLORE FILO WIRE COLOUR	DESCRIZIONE DESCRIPTION
ROSSO RED	POSITIVO DIRETTO POWER BATTERY
ARANCIO ORANGE	POSITIVO SOTTO QUADRO POWER SWITCH ON
NERO BLACK	MASSA GND
GIALLO YELLOW	KLINE
VERDE GREEN	CAN LOW
BIANCO WHITE	CAN HIGH
GRIGIO GREY	POL4 BOOT
BLU BLUE	POL5 CNF1
VIOLA/GRIGIO PURPLE/GREY	TENSIONE PROG. PROG. VOLTAGE
MARRONE BROWN	RESET



## CONNECTOR ECU TYPE 02



### WARNING :

on this ECU you must use two different flat cables: one is for the READING procedure and one is for the WRITING procedure

DENSO 255700 SH7058 SUBARU KUBOTA

**DIRECT CONNECTION – ECU TYPE 02 READING:**

For the READING procedure use the FLAT cable F34NTF53

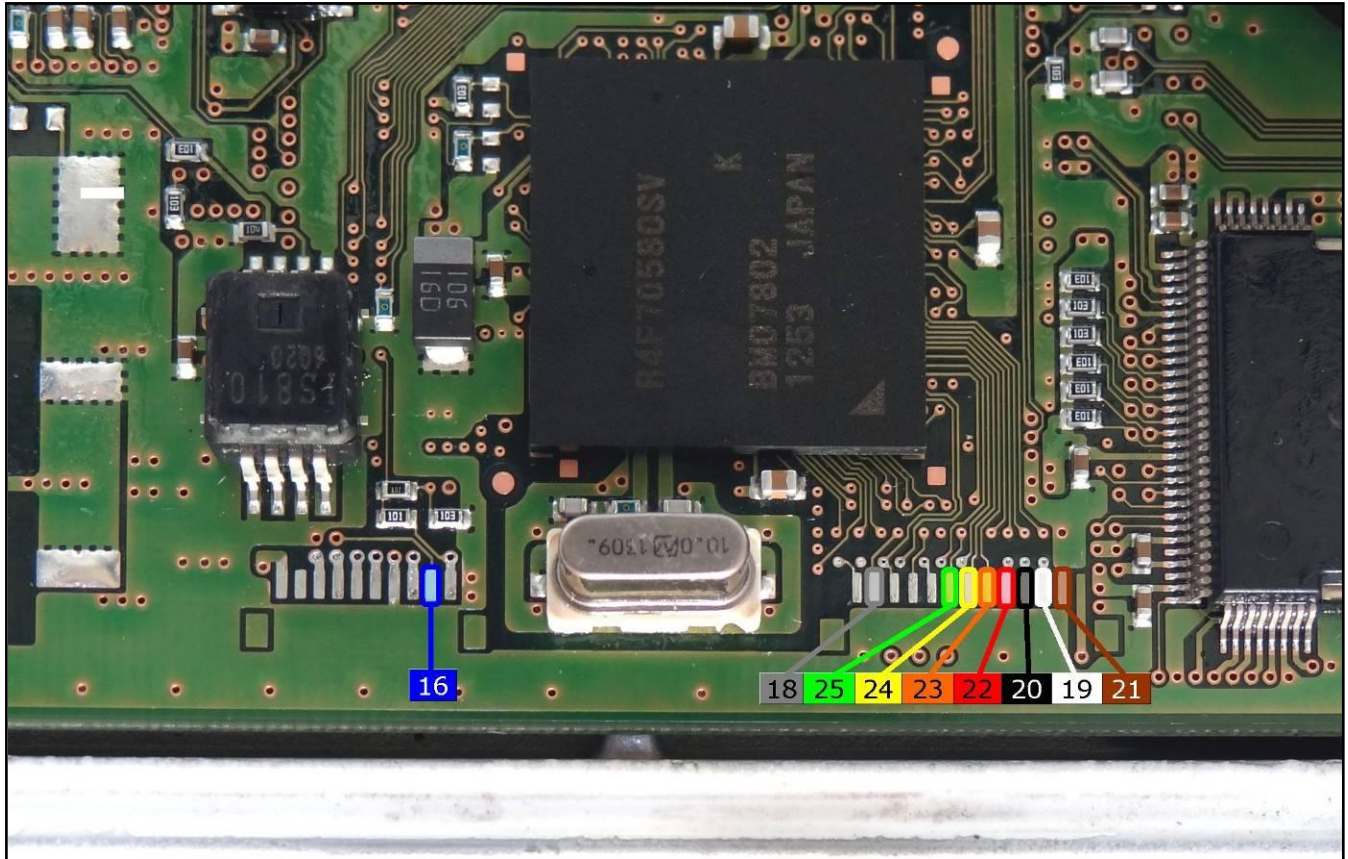


Pin	Colore Colour
11	Non usato Not used
12	Non usato Not used
13	Non usato Not used
14	Non usato Not used
15	Non usato Not used
16	Blu Blue
17	Viola Violet
18	Grigio Grey
19	Bianco White
20	Nero Black
21	Marrone Brown
22	Rosso Red
23	Arancio Orange
24	Giallo Yellow
25	Verde Green
26	Non usato Not used



## DENSO 255700 SH7058 SUBARU KUBOTA

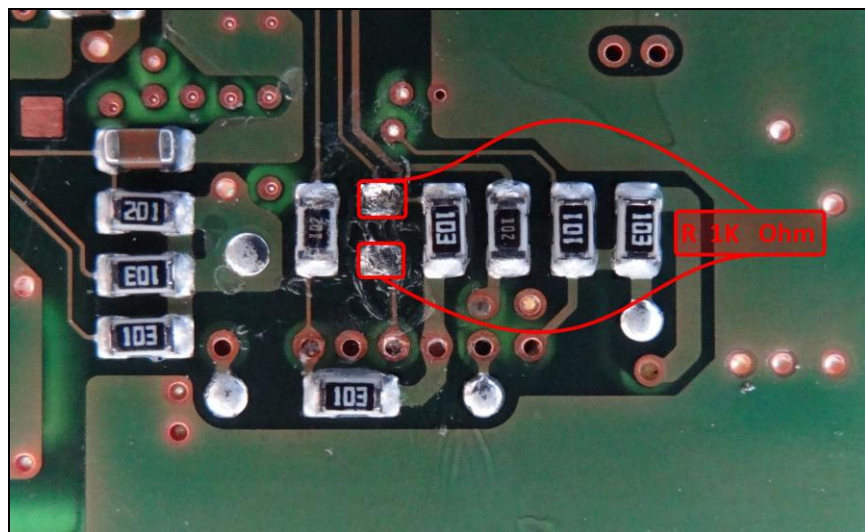
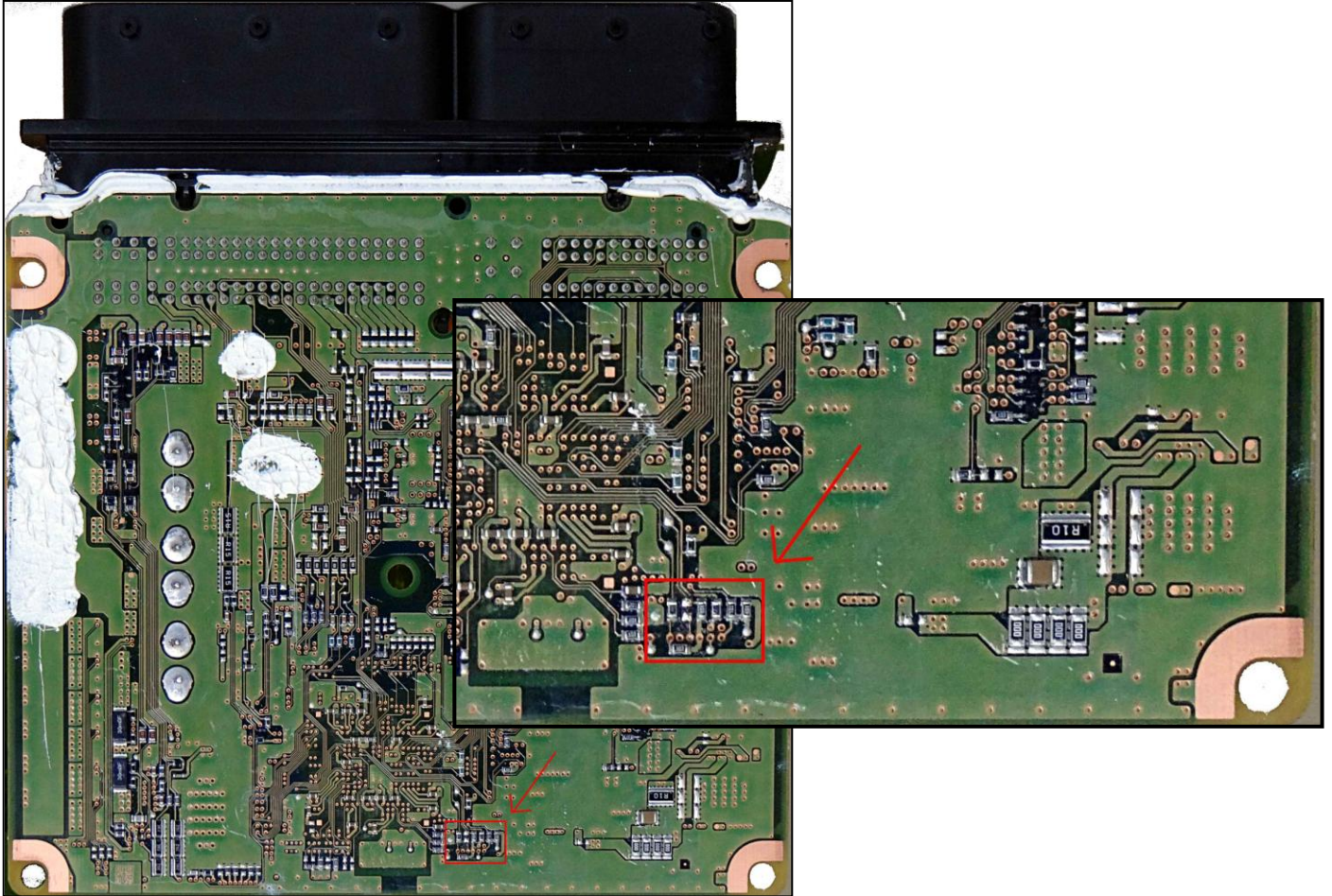
For a correct soldering procedure clean very well the soldering lay-by pins from the plastic film. We suggest you to use fine grit glass-paper smoothing by gentle pressure the connection lay by pins.



# DENSO 255700 SH7058 SUBARU KUBOTA

## ECU TYPE 02 WRITING:

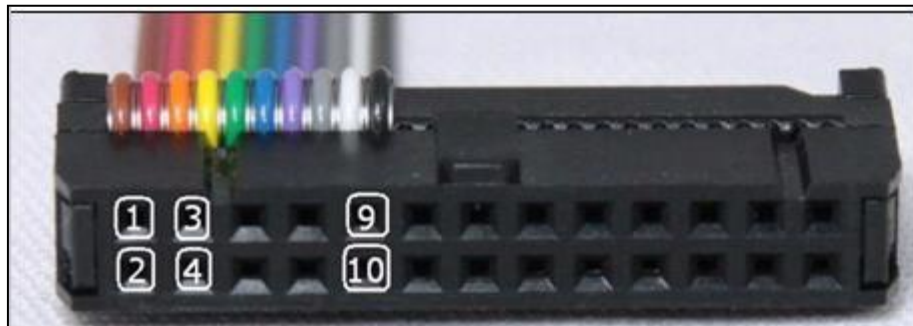
For a correct writing operation it is necessary to make the bridge with 1 resistor of 1 KOhm between 2 pads. Remove it before placing the ECU back into the vehicle.



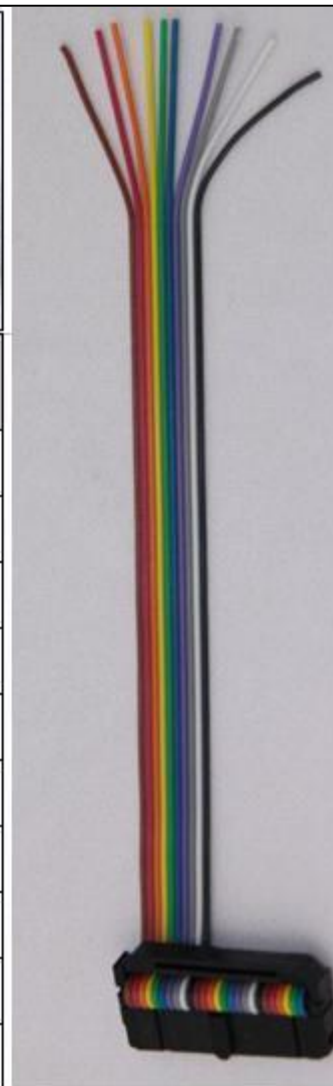
# DENSO 255700 SH7058 SUBARU KUBOTA

## DIRECT CONNECTION

For the WRITING procedure use the FLAT cable F34NTF51



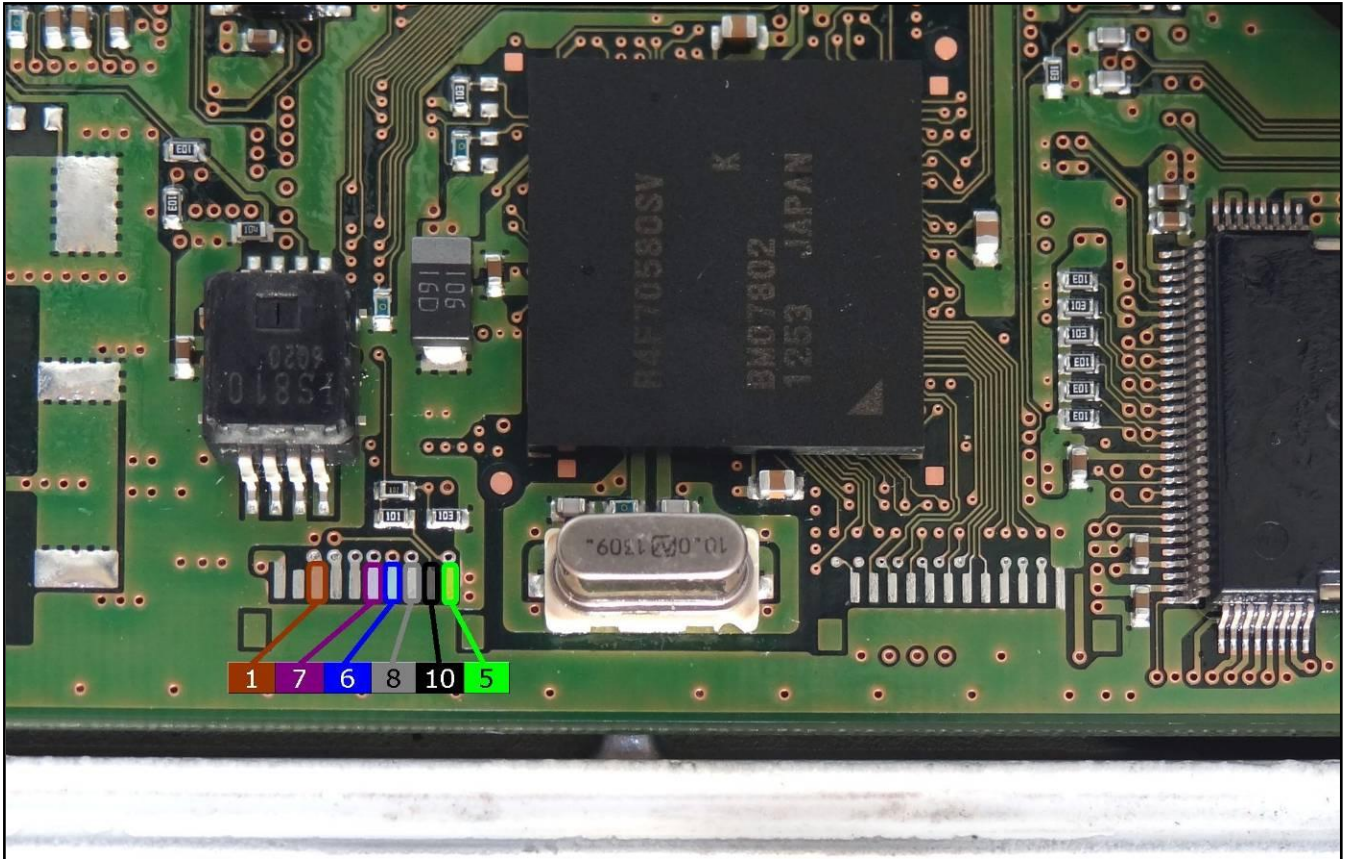
Pin	Colore Colour
1	Marrone Brown
2	Non usato Not used
3	Non usato Not used
4	Giallo Yellow
5	Verde Green
6	Blu Blue
7	Viola Violet
8	Grigio Grey
9	Bianco White
10	Nero Black





## DENSO 255700 SH7058 SUBARU KUBOTA

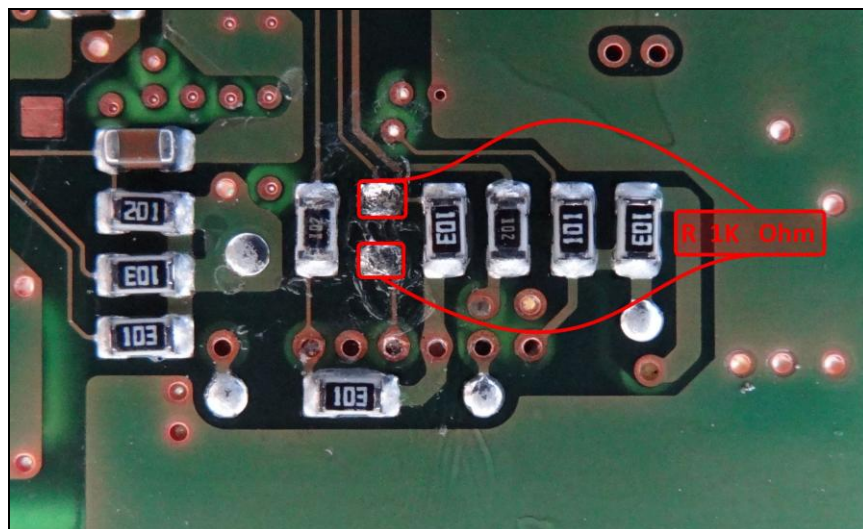
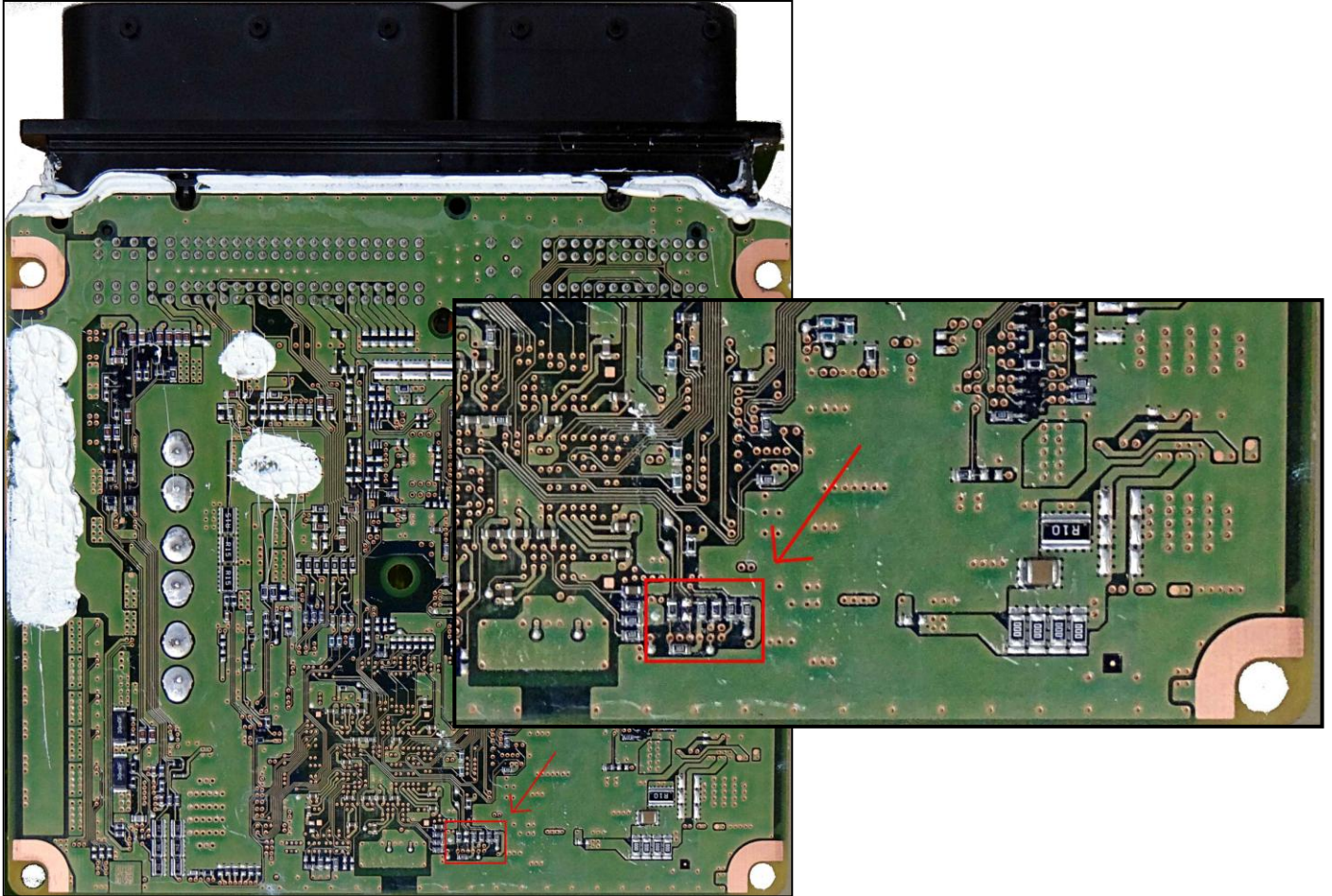
For a correct soldering procedure clean very well the soldering lay-by pins from the plastic film. We suggest you to use fine grit glass-paper smoothing by gentle pressure the connection lay by pins.



# DENSO 255700 SH7058 SUBARU KUBOTA

## ECU TYPE 02 WRITING:

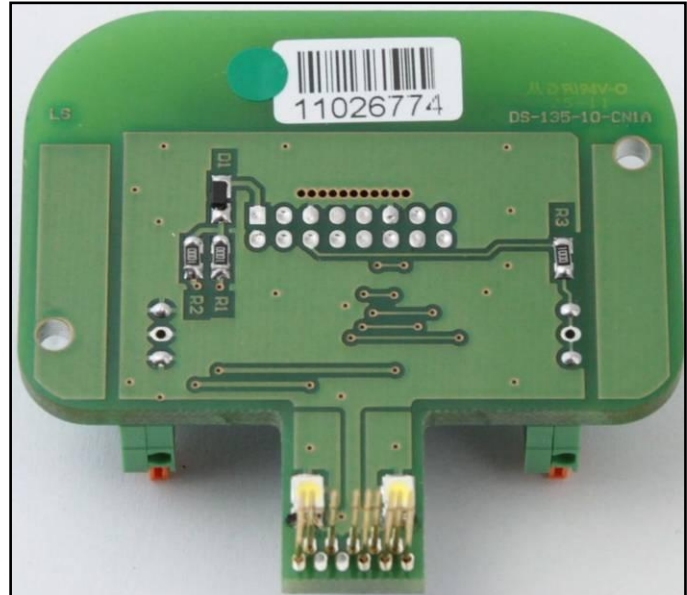
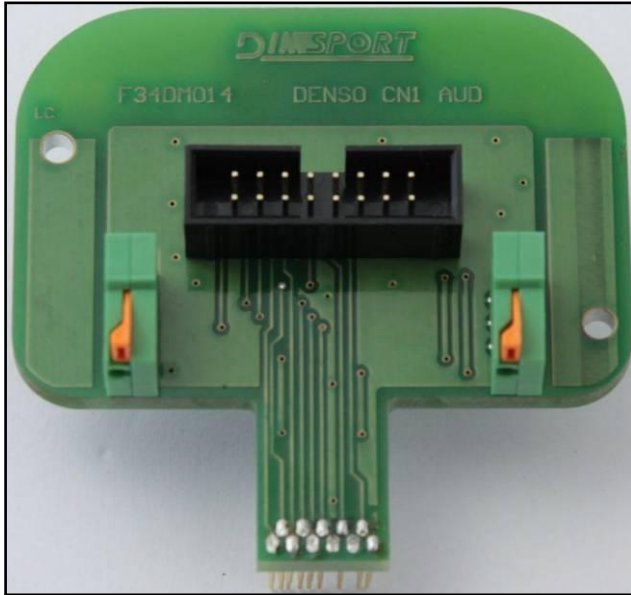
For a correct writing operation it is necessary to make the bridge with 1 resistor of 1 KOhm between 2 pads. Remove it before placing the ECU back into the vehicle.



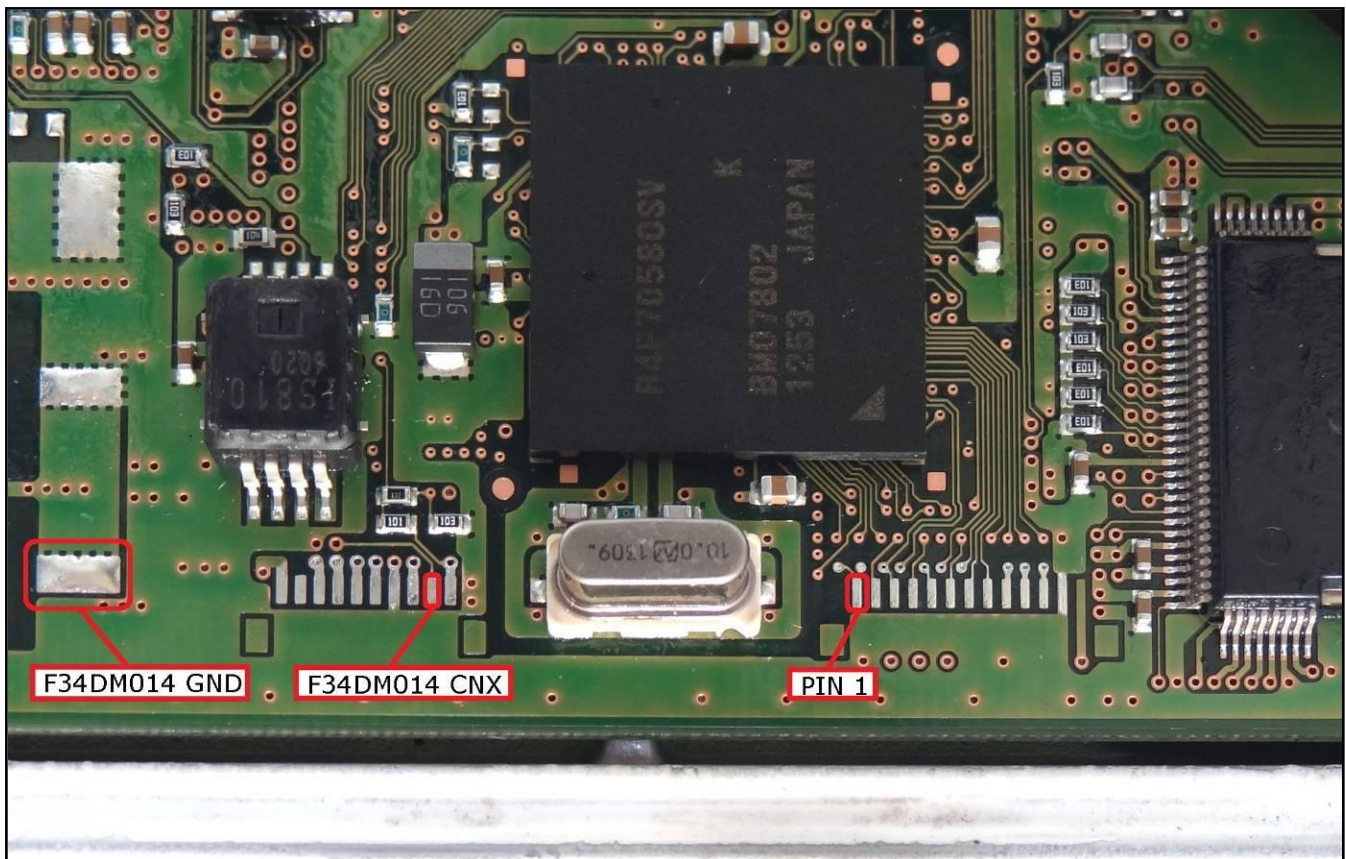
# DENSO 255700 SH7058 SUBARU KUBOTA

## METAL POSITIONING FRAME CONNECTION – ECU TYPE 02 READING

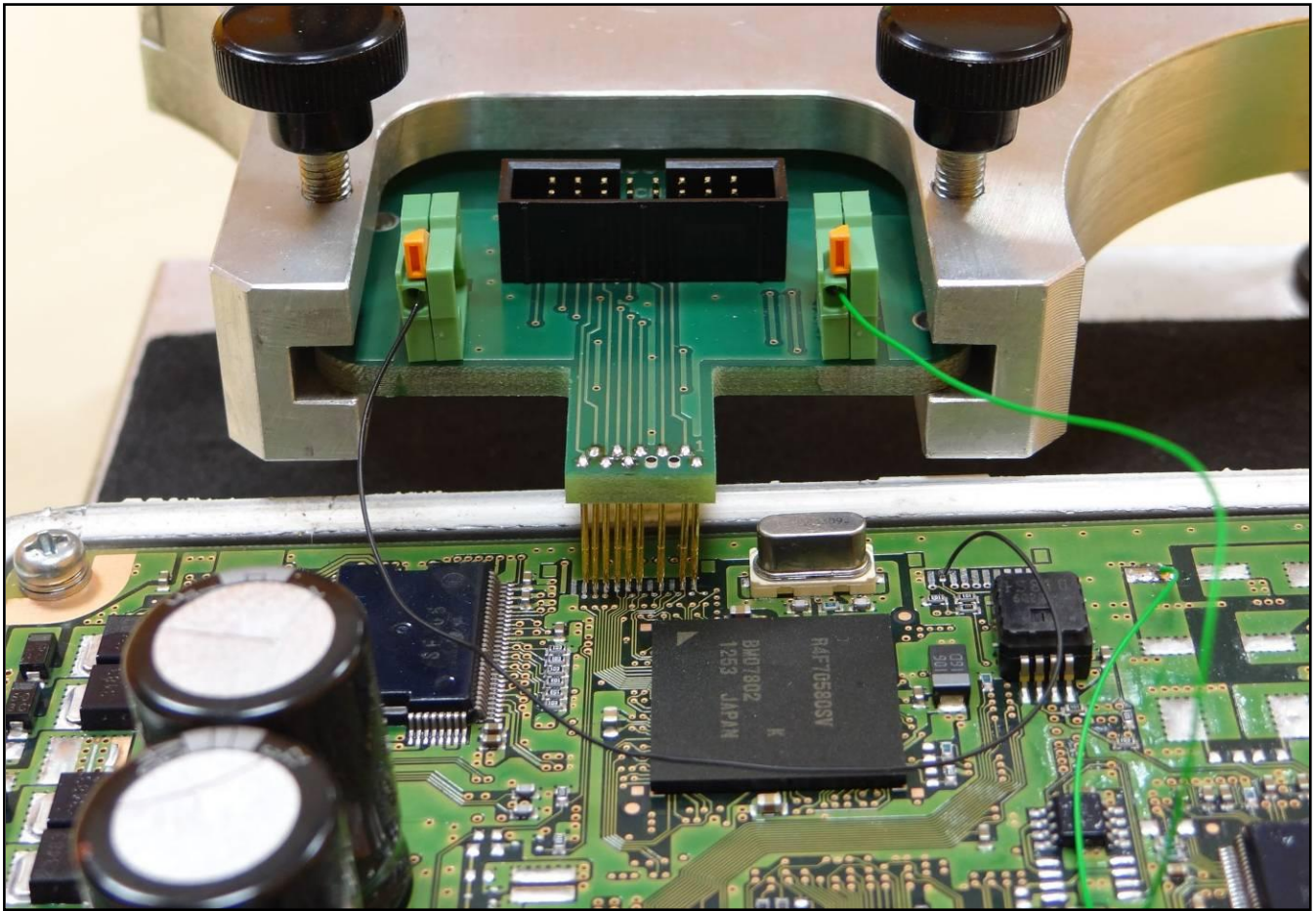
Power the ECU with the F32GN037C/D wiring. Use the metal positioning frame adapter F34DM014.



**WARNING:** while connecting the adapter F34DM014 take care of the PIN1 assignment.



DENSO 255700 SH7058 SUBARU KUBOTA



DENSO 255700 SH7058 SUBARU KUBOTA

**METAL POSITIONING FRAME CONNECTION – ECU TYPE 02 WRITING**

Power the ECU with the F32GN037C/D wiring. Use the metal positioning frame adapter F34DM015.

