

DENSO 275722-4810 SH72543R JTAG SUBARU

plugin **1081**



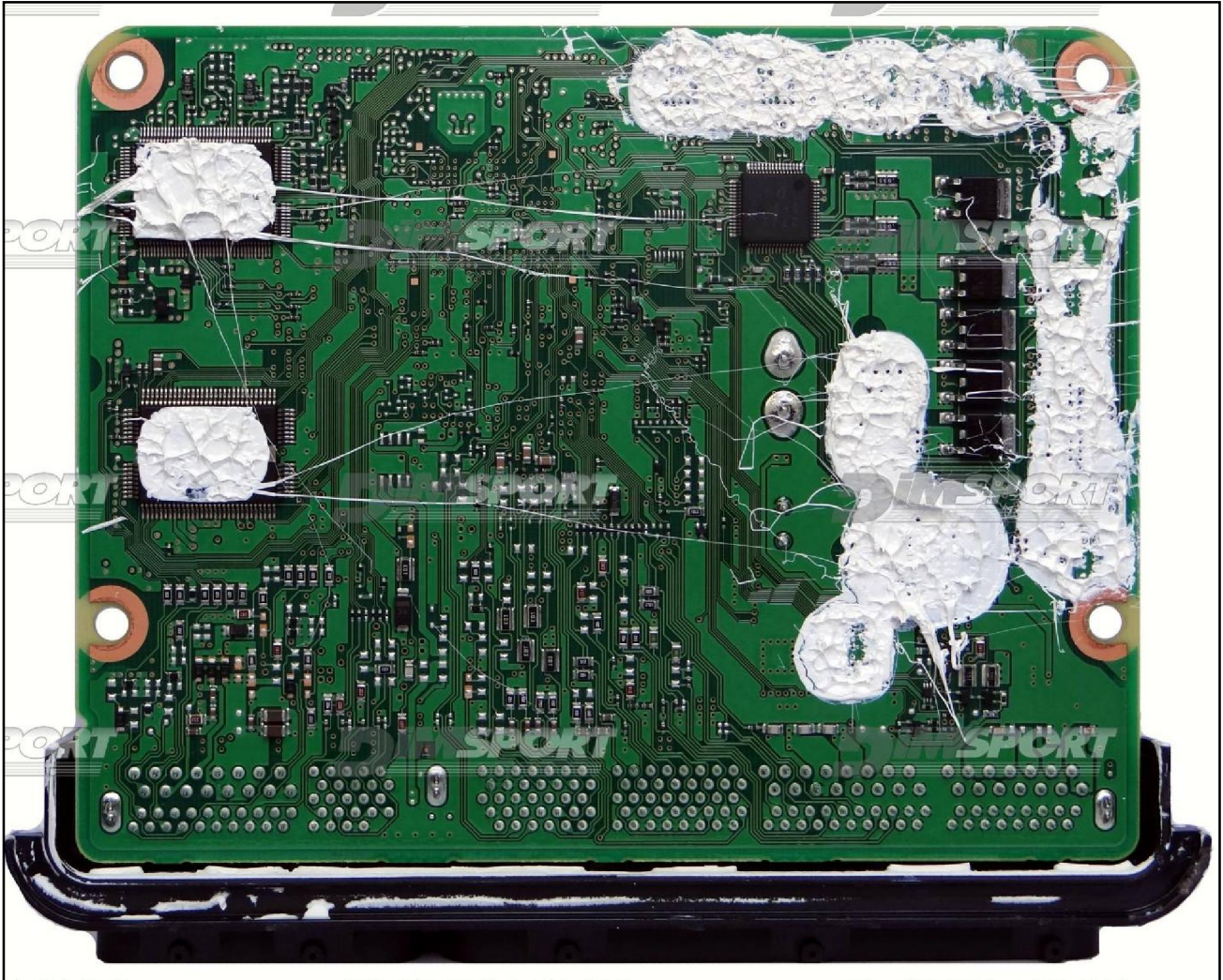
DENSO 275722-4810 SH72543R JTAG SUBARU

PROCESSOR SIDE



DENSO 275722-4810 SH72543R JTAG SUBARU

LOWER SIDE

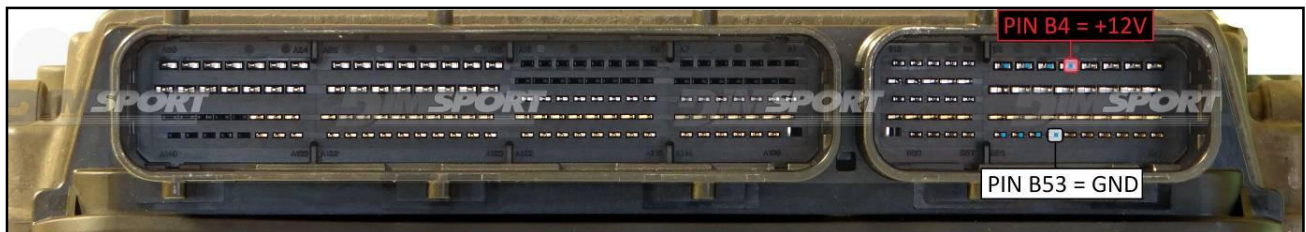
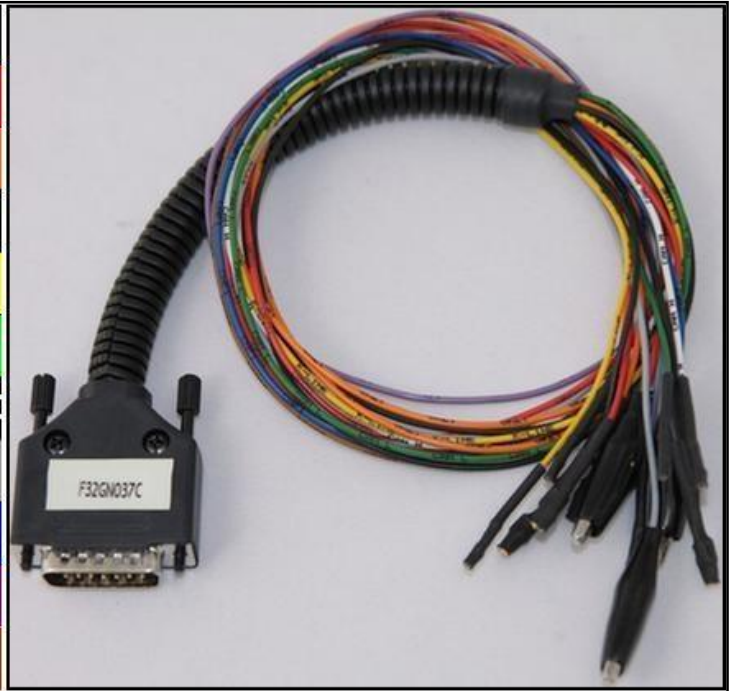


## DENSO 275722-4810 SH72543R JTAG SUBARU

### ECU CONNECTOR

In order to connect to the ECU use the cable F32GN037C.  
Make sure that the POWER led (red) on Trasdata is ON.

COLORE FILO WIRE COLOUR	DESCRIZIONE DESCRIPTION
ROSSO RED	POSITIVO DIRETTO POWER BATTERY
ARANCIO ORANGE	POSITIVO SOTTO QUADRO POWER SWITCH ON
NERO BLACK	MASSA GND
GIALLO YELLOW	KLINE
VERDE GREEN	CAN LOW
BIANCO WHITE	CAN HIGH
GRIGIO GREY	POL4 BOOT
BLU BLUE	POL5 CNF1
VIOLA/GRIGIO PURPLE/GREY	TENSIONE PROG. PROG. VOLTAGE
MARRONE BROWN	RESET

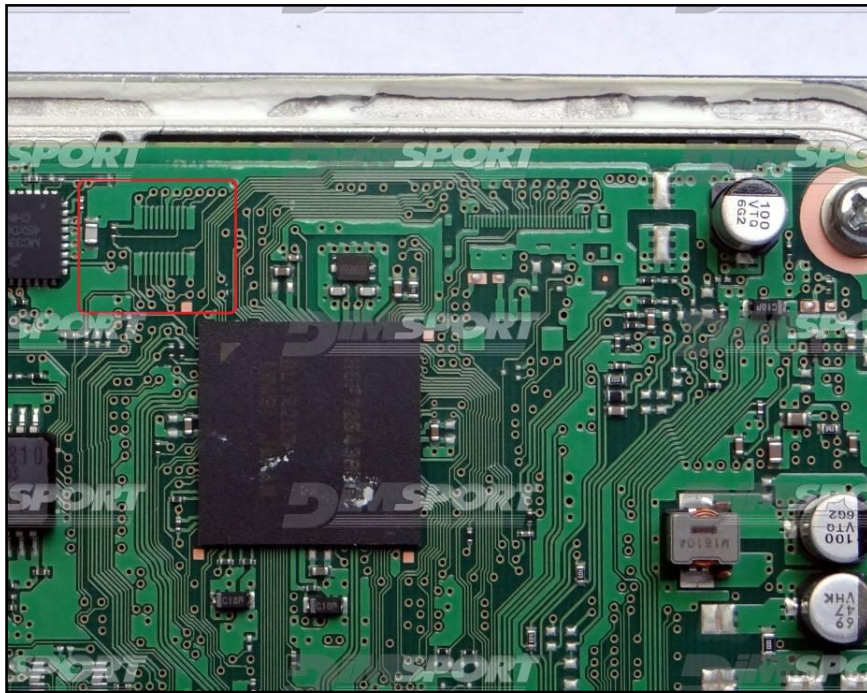


## DENSO 275722-4810 SH72543R JTAG SUBARU

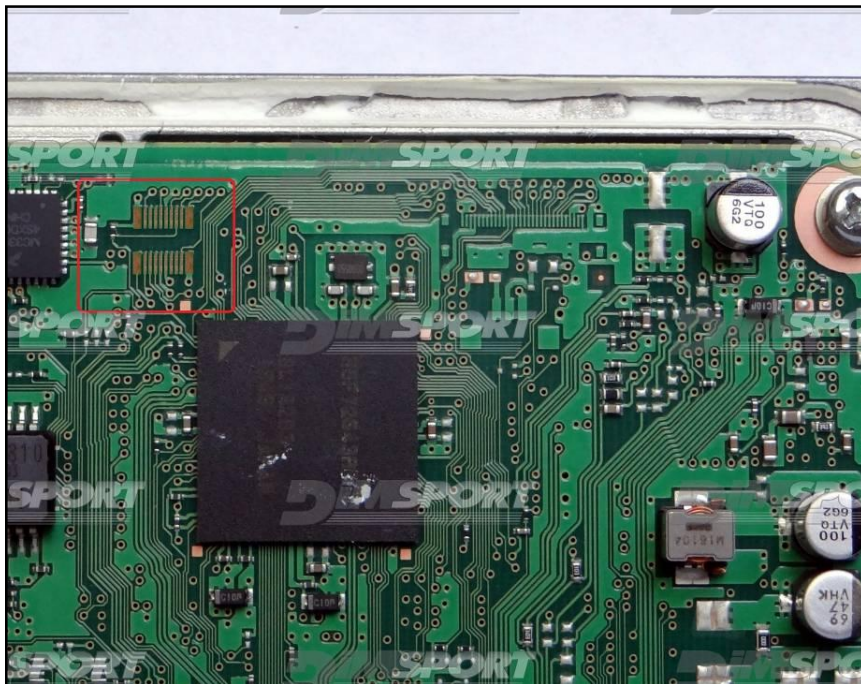
### F34NTA21 SOLDERING ADAPTER CONNECTION

In order to communicate with the ECU it is necessary to have the F34NTA21 soldering adapter and proceed with the following operations:

- identify the communication pads placed on the processor side of the motherboard



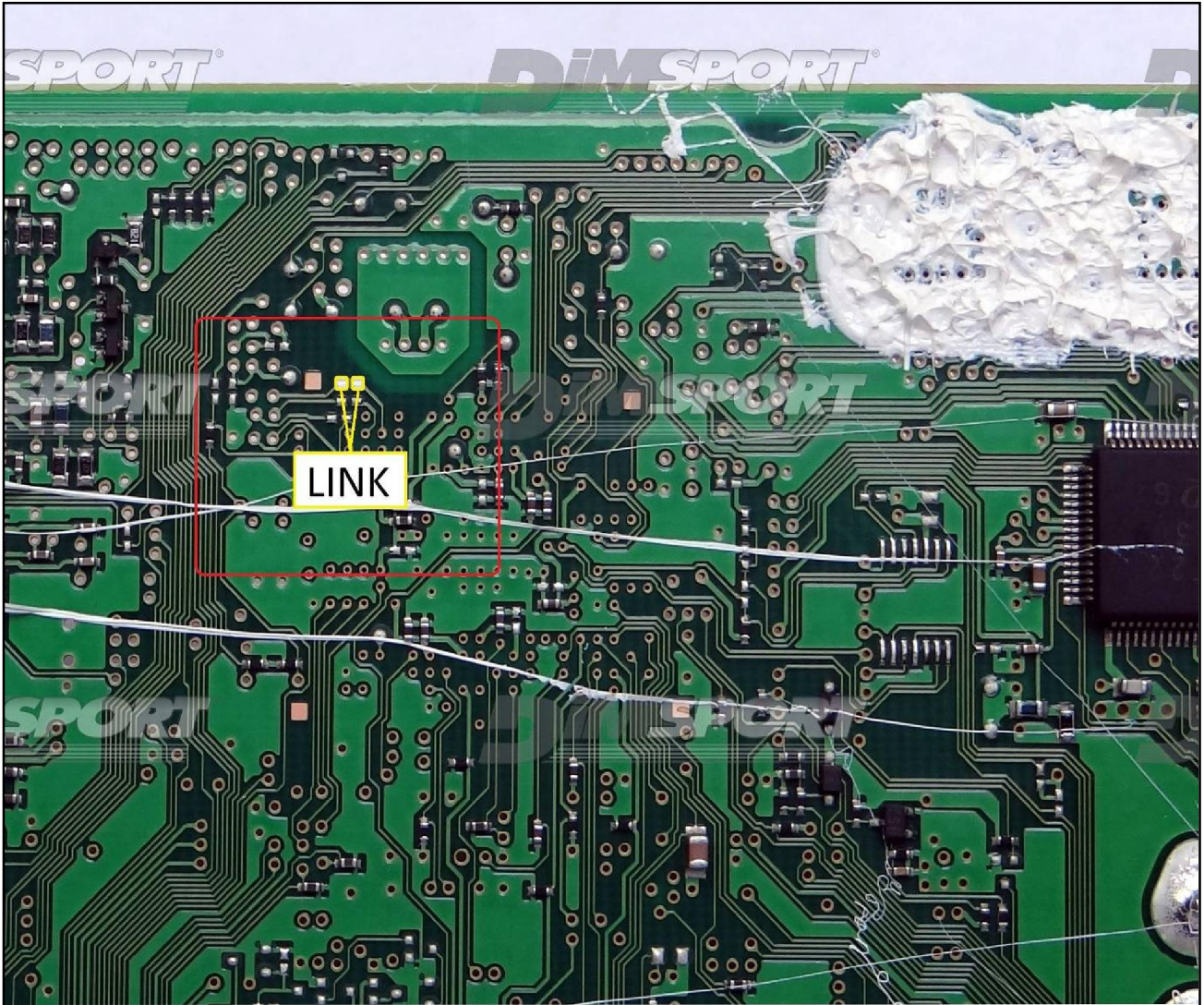
- For a correct F34NTA21 adapter base soldering procedure clean very well the lay-by pins from the plastic film. We suggest you a smoothing by gentle pressure using a fine grit glass-paper.



DENSO 275722-4810 SH72543R JTAG SUBARU

**Warning**

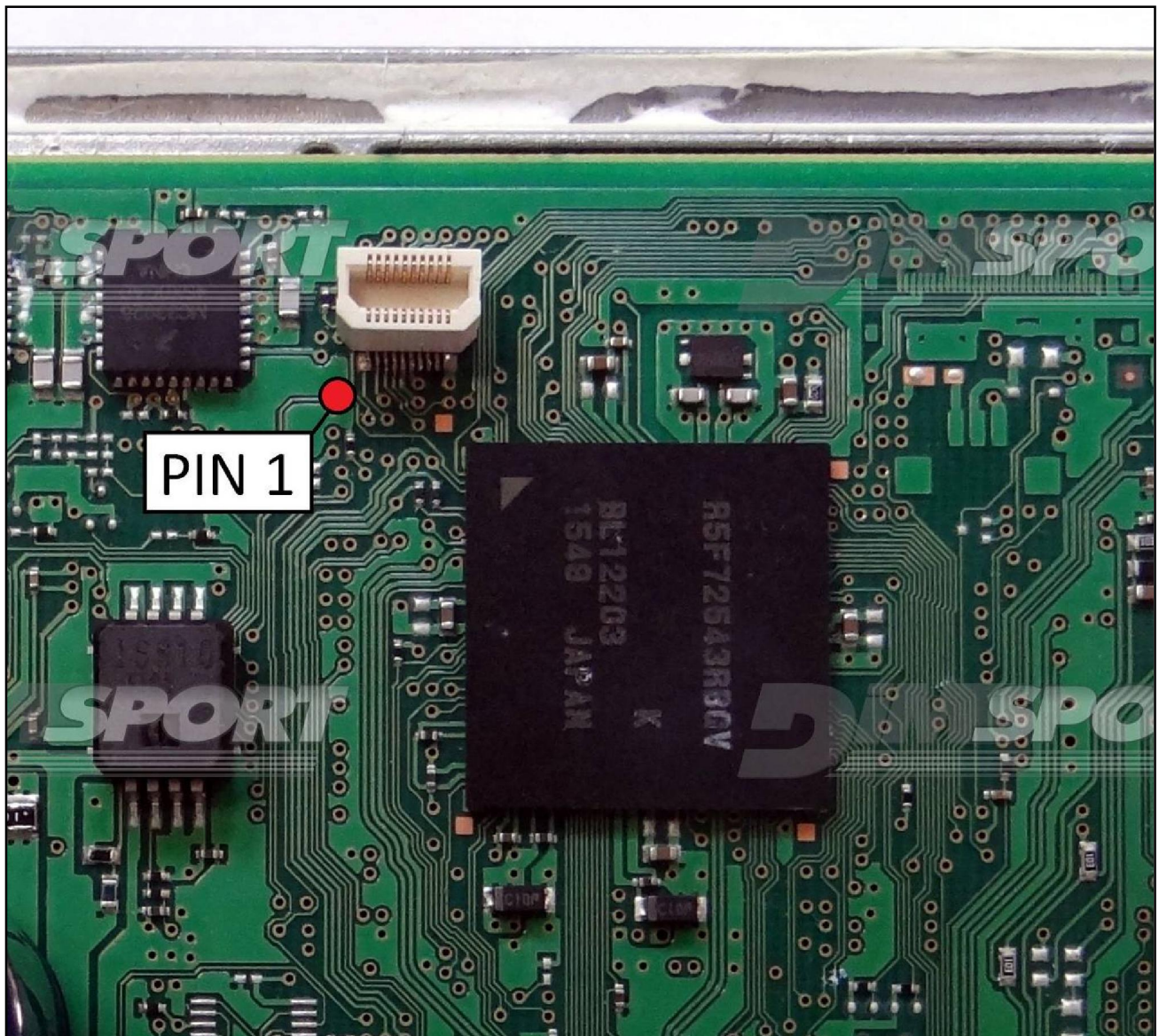
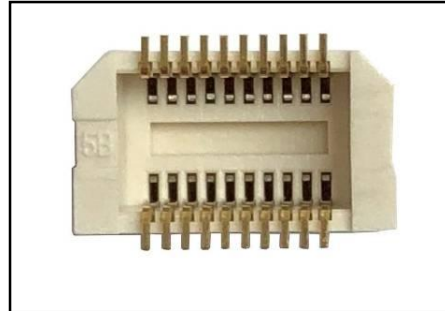
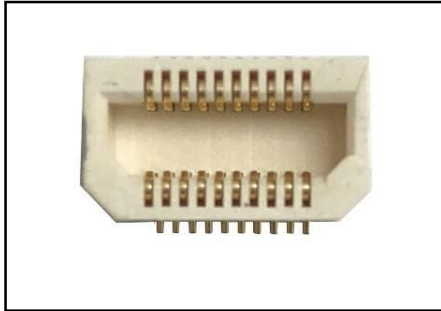
In order to read&write properly the ECU it is necessary to perform a LINK, remove it before placing back the ECU into the vehicle.



## DENSO 275722-4810 SH72543R JTAG SUBARU

Solder the F34NTA21 adapter base on the motherboard taking care of the correct PIN1 positioning and avoiding any short circuits.

At the end of the work you can leave the base of the F34NTA21 adapter soldered on the ECU motherboard.



DENSO 275722-4810 SH72543R JTAG SUBARU

Use the flat F34NTF03 to connect the F34NTA21 adapter to the digital port of the Trasdata

