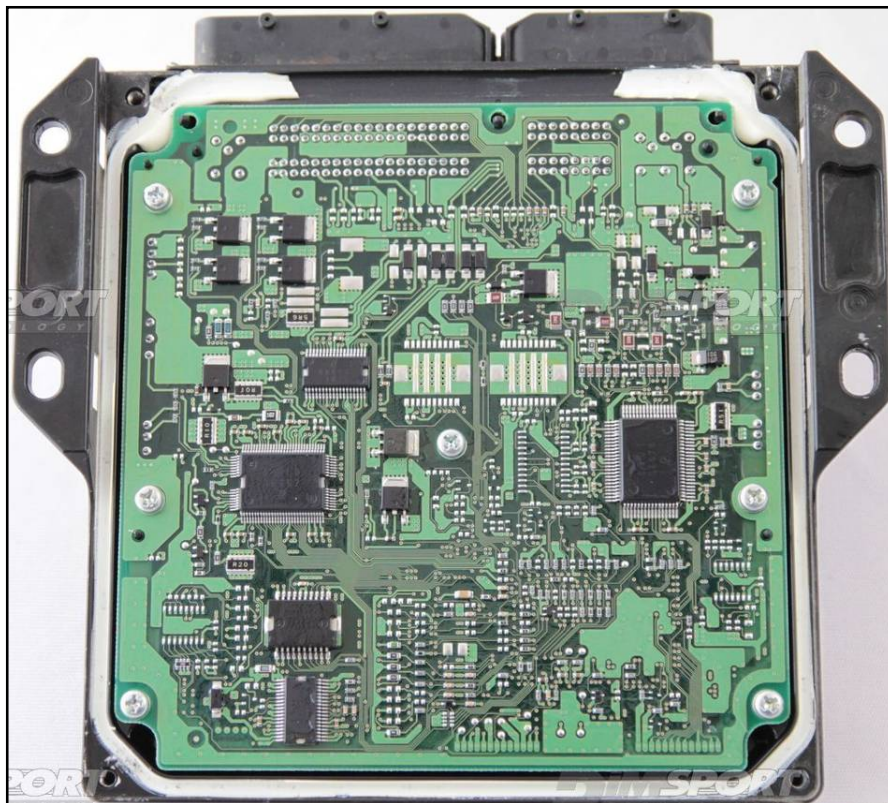


DENSO 275800 SH7058 SUBARU KUBOTA

plugin 578

The lay-by pins are placed in the lower part of the ECU.



DENSO 275800 SH7058 SUBARU KUBOTA

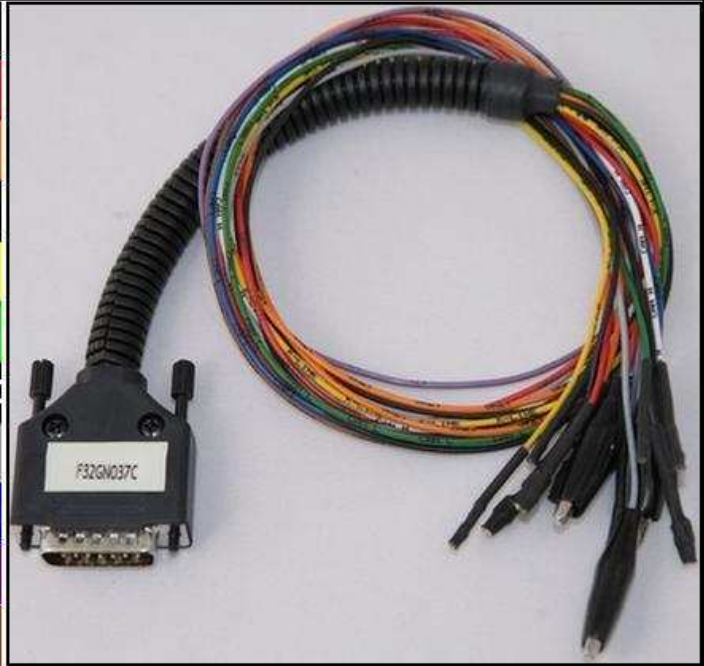
DIRECT CONNECTION

In order to connect to the ECU use the CABLE F32GN037C/D.

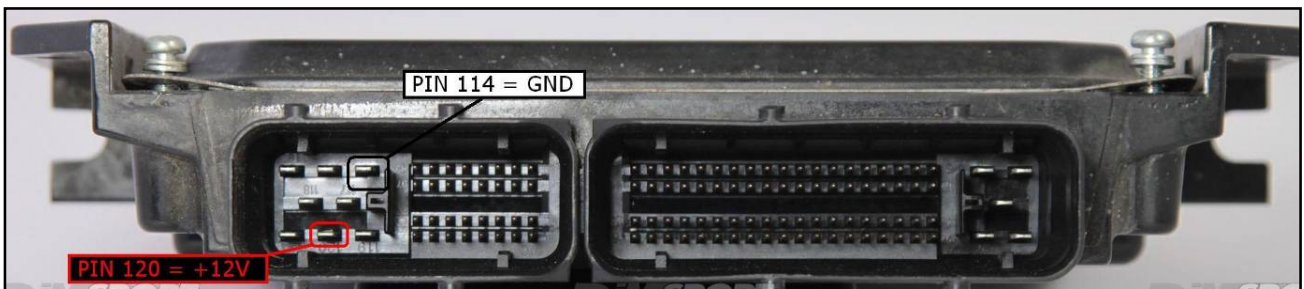
Make sure that the POWER led (red) on Trasdata is ON.

Use the same connections for the DIMA.

COLORE FILO WIRE COLOUR	DESCRIZIONE DESCRIPTION
ROSSO RED	POSITIVO DIRETTO POWER BATTERY
ARANCIO ORANGE	POSITIVO SOTTO QUADRO POWER SWITCH ON
NERO BLACK	MASSA GND
GIALLO YELLOW	KLINE
VERDE GREEN	CAN LOW
BIANCO WHITE	CAN HIGH
GRIGIO GREY	POL4 BOOT
BLU BLUE	POL5 CNF1
VIOLA/GRIGIO PURPLE/GREY	TENSIONE PROG. PROG. VOLTAGE
MARRONE BROWN	RESET



ECU CONNECTOR



WARNING :

on this ECU you must use two different flat cables: one is for the READING procedure and one is for the WRITING procedure.

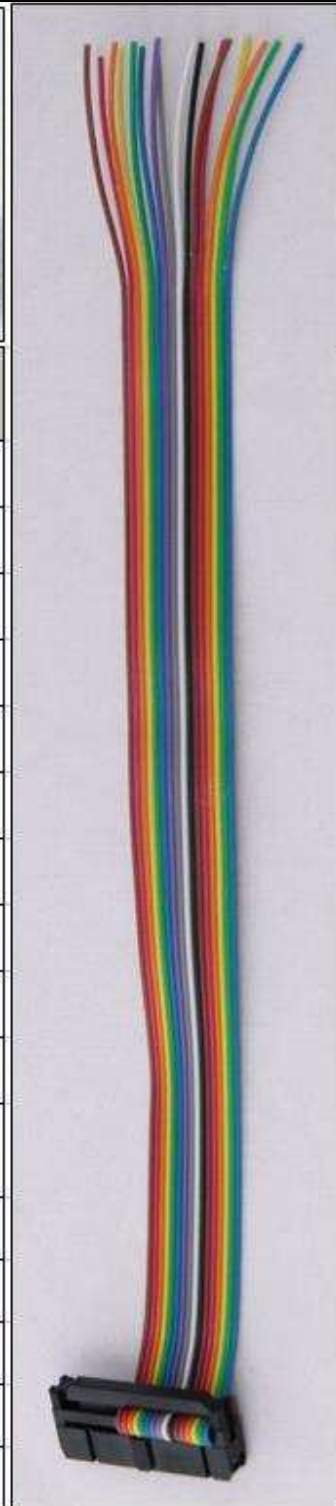
DENSO 275800 SH7058 SUBARU KUBOTA

DIRECT CONNECTION – ECU READING:

For the READING procedure use the FLAT cable F34NTF53



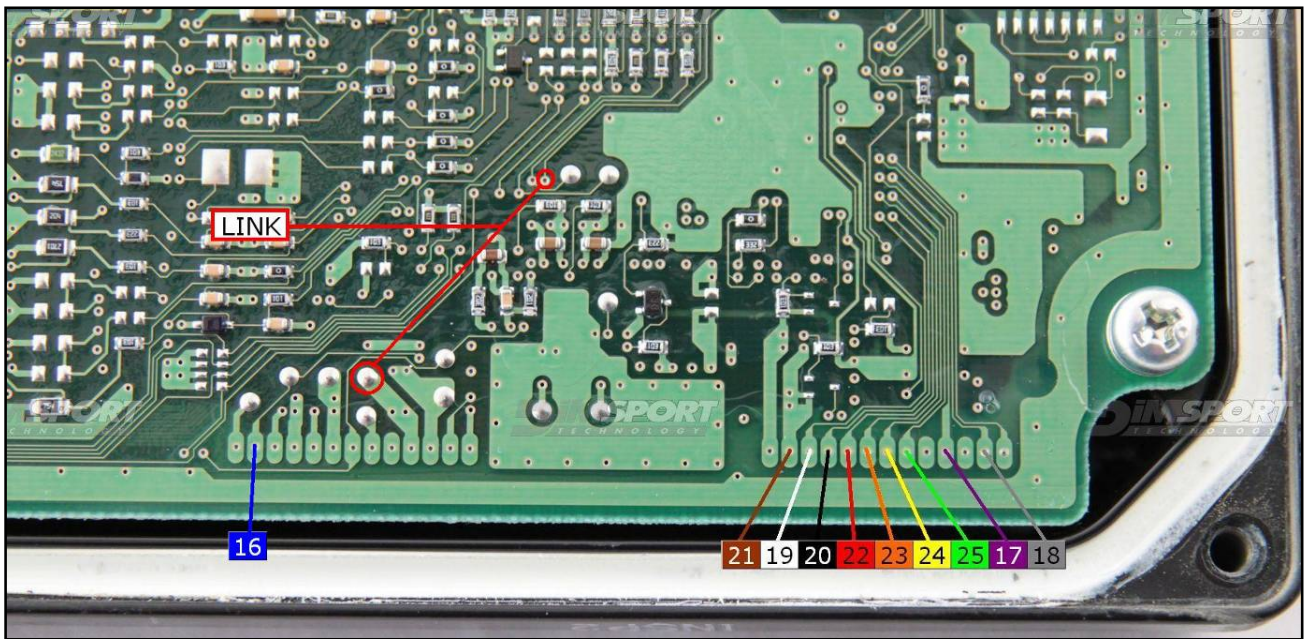
Pin	Colore Colour
11	Non usato Not used
12	Non usato Not used
13	Non usato Not used
14	Non usato Not used
15	Non usato Not used
16	Blu Blue
17	Viola Violet
18	Grigio Grey
19	Bianco White
20	Nero Black
21	Marrone Brown
22	Rosso Red
23	Arancio Orange
24	Giallo Yellow
25	Verde Green
26	Non usato Not used



DENSO 275800 SH7058 SUBARU KUBOTA

For a correct soldering procedure clean very well the soldering lay-by pins from the plastic film. We suggest you to use fine grit glass-paper smoothing by gentle pressure the connection lay by pins.

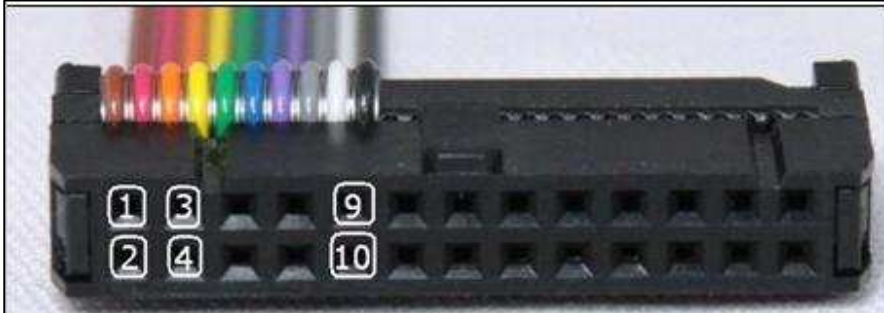
WARNING: for a correct reading procedure it is required a little short circuit (LINK1) as shown in the picture here below. Such bridge is used for the READING ONLY, remove it after the reading procedure.



DENSO 275800 SH7058 SUBARU KUBOTA

DIRECT CONNECTION – ECU WRITING:

For the WRITING procedure use the FLAT cable F34NTF51

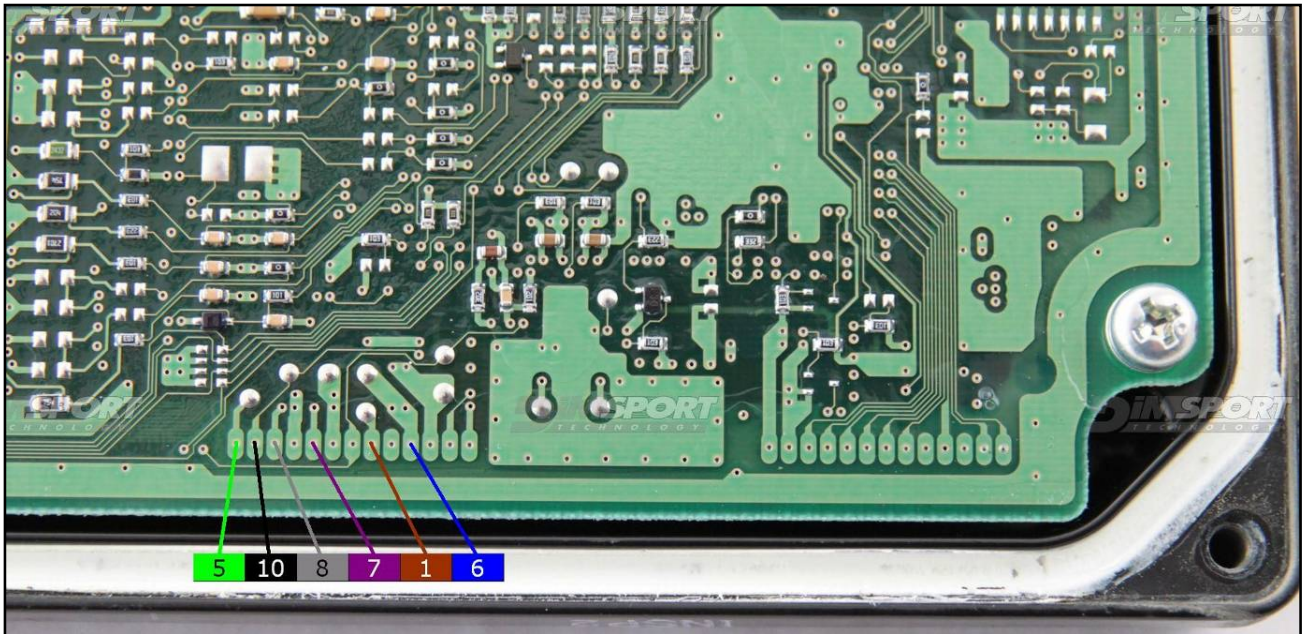


Pin	Colore Colour
1	Marrone Brown
2	Non usato Not used
3	Non usato Not used
4	Giallo Yellow
5	Verde Green
6	Blu Blue
7	Viola Violet
8	Grigio Grey
9	Bianco White
10	Nero Black



DENSO 275800 SH7058 SUBARU KUBOTA

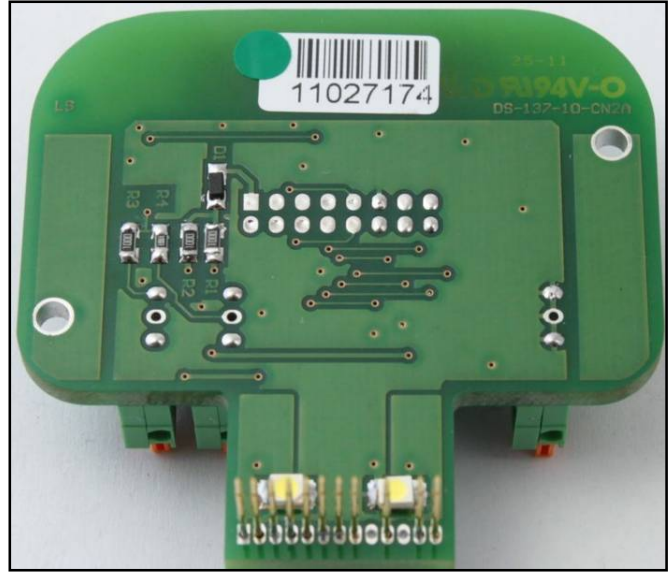
For a correct soldering procedure clean very well the soldering lay-by pins from the plastic film. We suggest you to use fine grit glass-paper smoothing by gentle pressure the connection lay by pins.



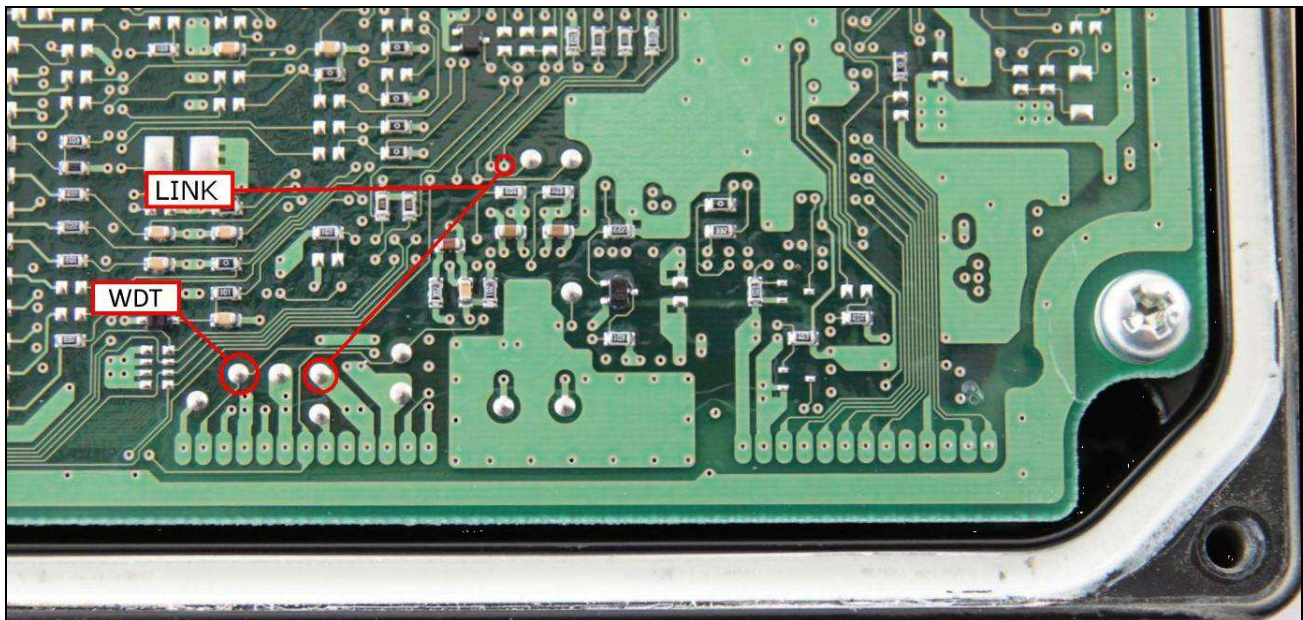
DENSO 275800 SH7058 SUBARU KUBOTA

DIMA CONNECTION – ECU READING

Power the ECU with the F32GN037C/D wiring. Use the DIMA adapter F34DM016.



WARNING: in order to perform the reading it is necessary to short-circuit the two LINK pads (make a bridge) and connect the pin shown in the picture to the WDT connector on the DIMA adapter. This connection is required for reading only, remove it at the end of the reading process.



DENSO 275800 SH7058 SUBARU KUBOTA



DENSO 275800 SH7058 SUBARU KUBOTA

DIMA CONNECTION – ECU WRITING

Power the ECU with the F32GN037C/D wiring. Use the DIMA adapter DIMA F34DM019.

