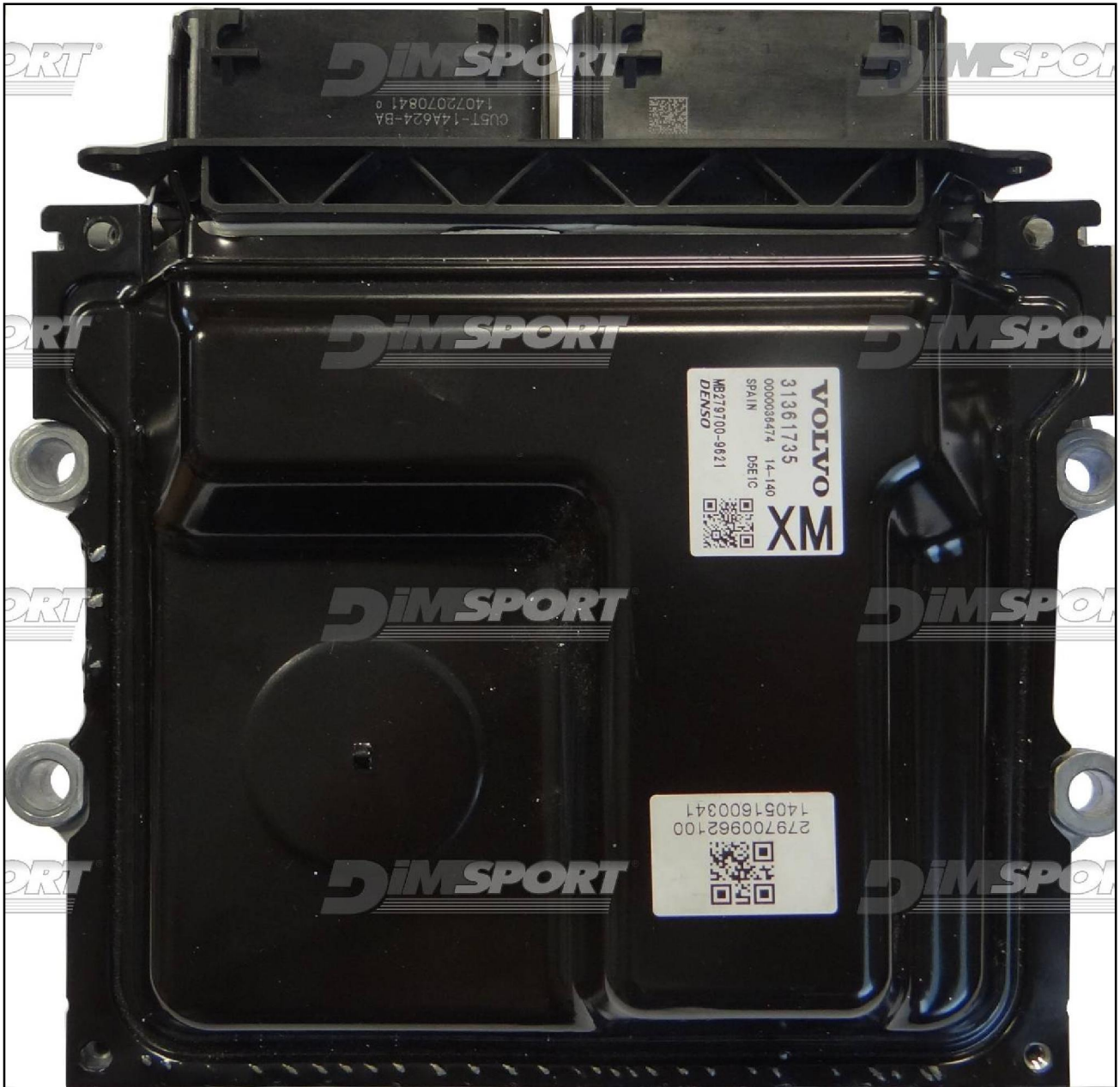
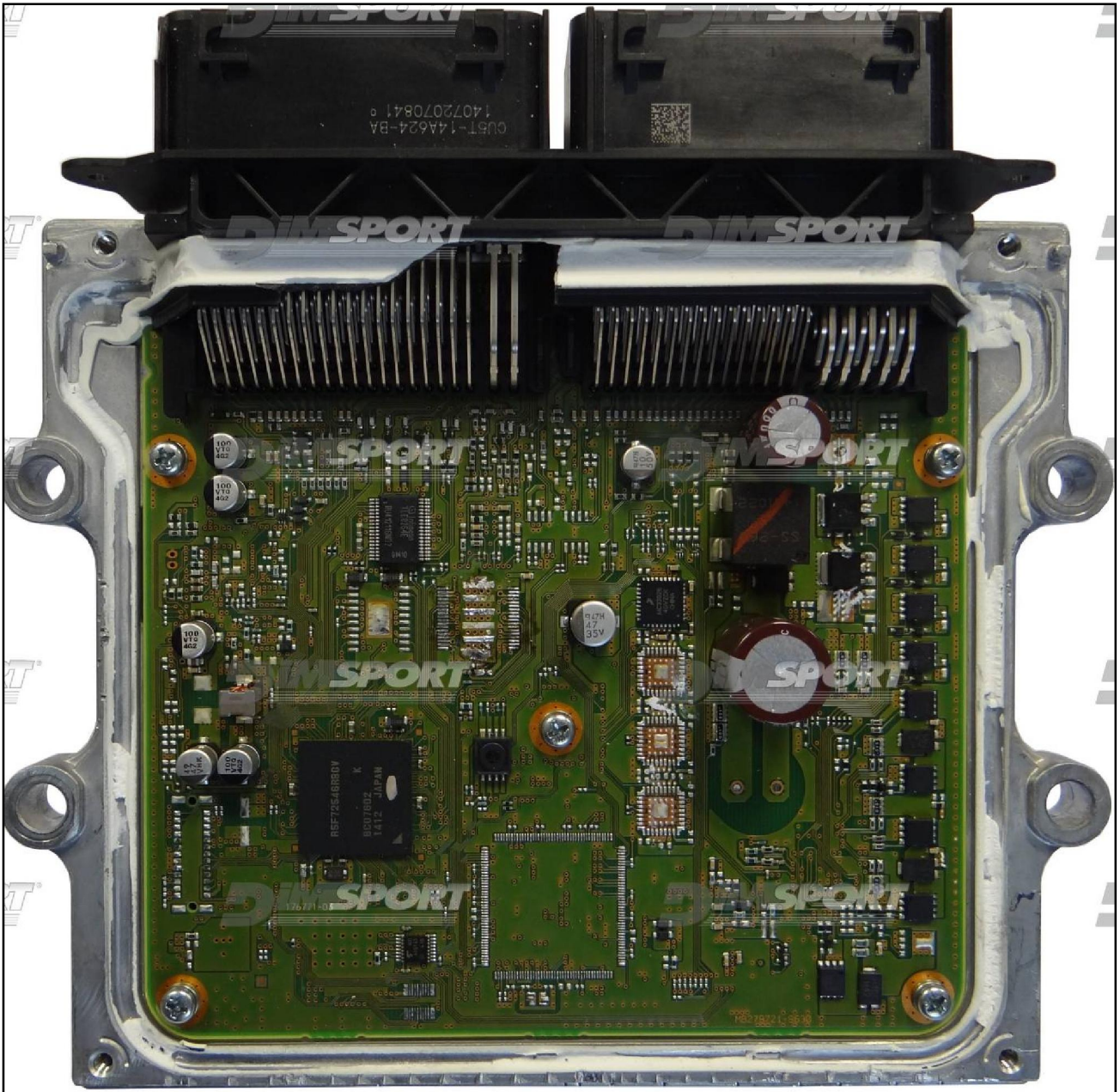


DENSO MB279700-9621 SH72546R JTAG VOLVO PETROL

plugin **1079**



DENSO MB279700-9621 SH72546R JTAG VOLVO PETROL



DENSO MB279700-9621 SH72546R JTAG VOLVO PETROL

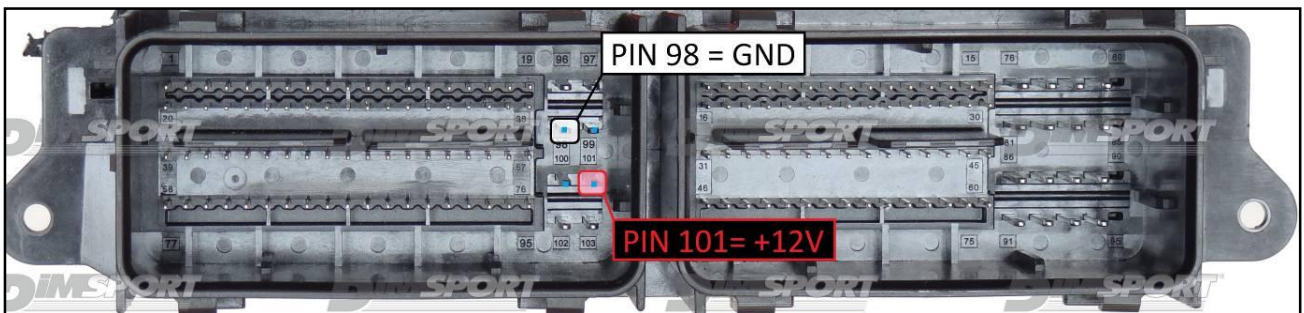
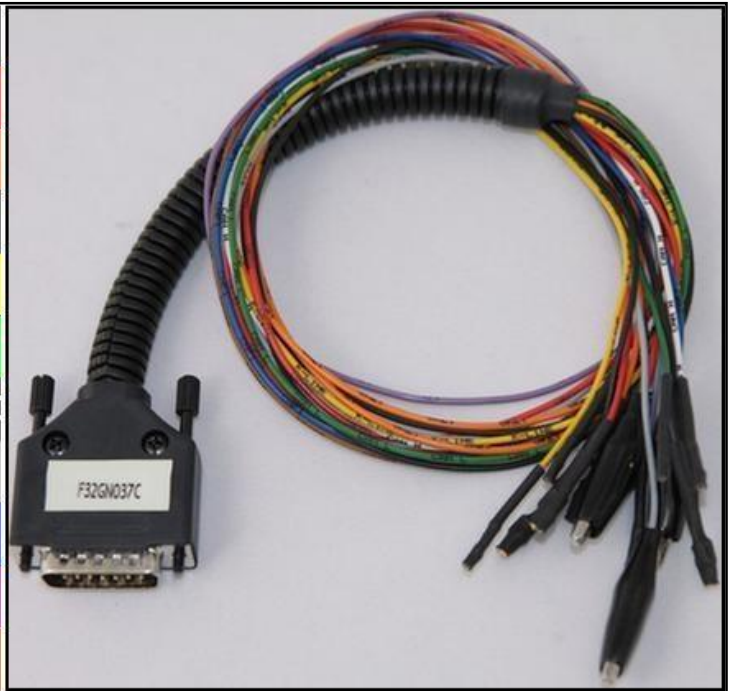
ECU CONNECTOR

In order to connect to the ECU use the cable F32GN037C.

Make sure that the POWER led (red) on Trasdata is ON.

These connections are required for all the connection approaches: loose wires and metal positioning frame adapter.

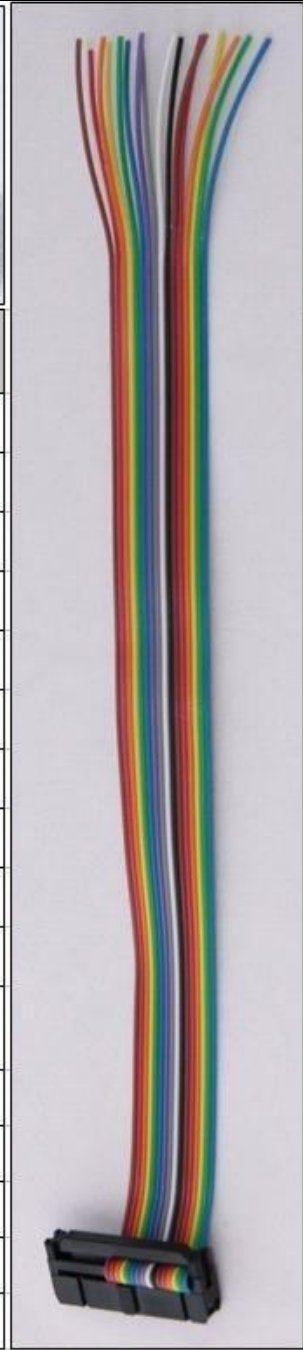
COLORE FILO WIRE COLOUR	DESCRIZIONE DESCRIPTION
ROSSO RED	POSITIVO DIRETTO POWER BATTERY
ARANCIO ORANGE	POSITIVO SOTTO QUADRO POWER SWITCH ON
NERO BLACK	MASSA GND
GIALLO YELLOW	KLINE
VERDE GREEN	CAN LOW
BIANCO WHITE	CAN HIGH
GRIGIO GREY	POL4 BOOT
BLU BLUE	POL5 CNF1
VIOLA/GRIGIO PURPLE/GREY	TENSIONE PROG. PROG. VOLTAGE
MARRONE BROWN	RESET



J-TAG LOOSE WIRES CONNECTION

For the reading & writing procedures use the FLAT cable F34NTF53

Pin	Colore Colour
11	Non usato Not used
12	Non usato Not used
13	Non usato Not used
14	Non usato Not used
15	Non usato Not used
16	Blu Blue
17	Viola Violet
18	Grigio Grey
19	Bianco White
20	Nero Black
21	Marrone Brown
22	Rosso Red
23	Arancio Orange
24	Giallo Yellow
25	Non usato Not used
26	Non usato Not used

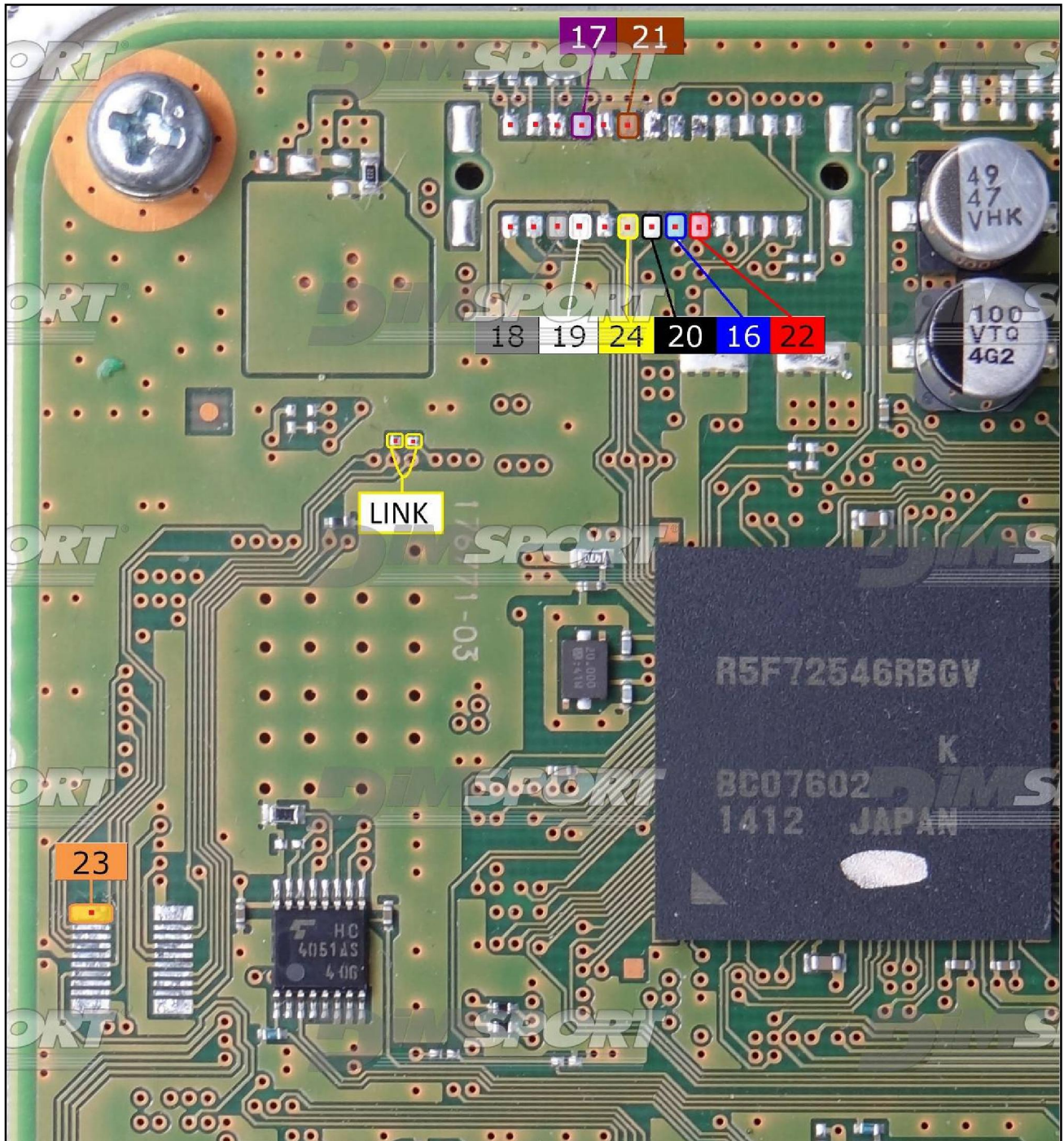


DENSO MB279700-9621 SH72546R JTAG VOLVO PETROL

Connect the wires on the pads avoiding any short circuits.

Warning

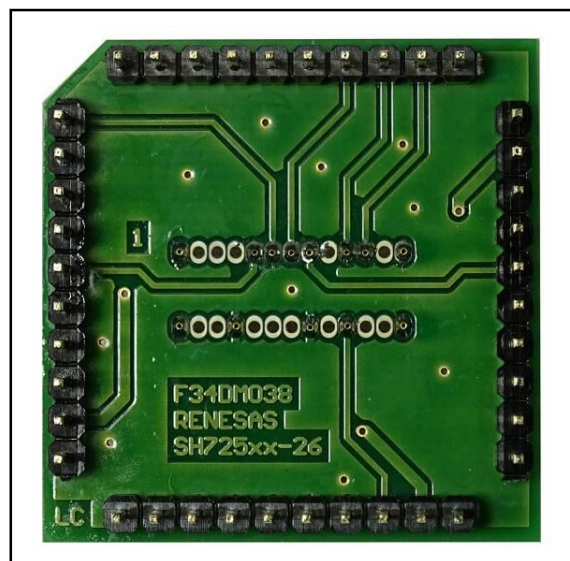
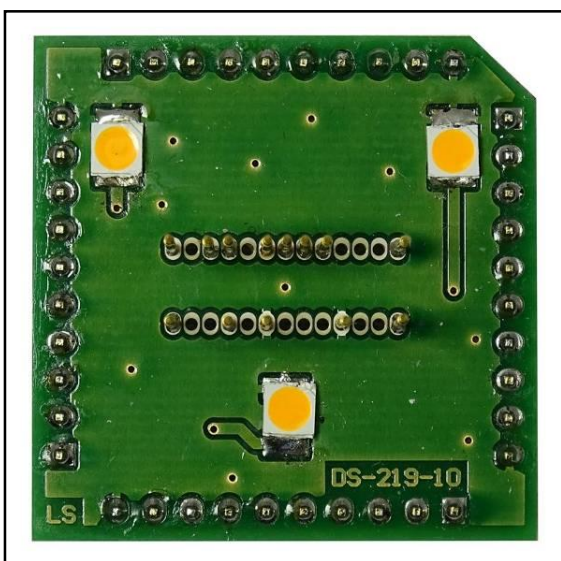
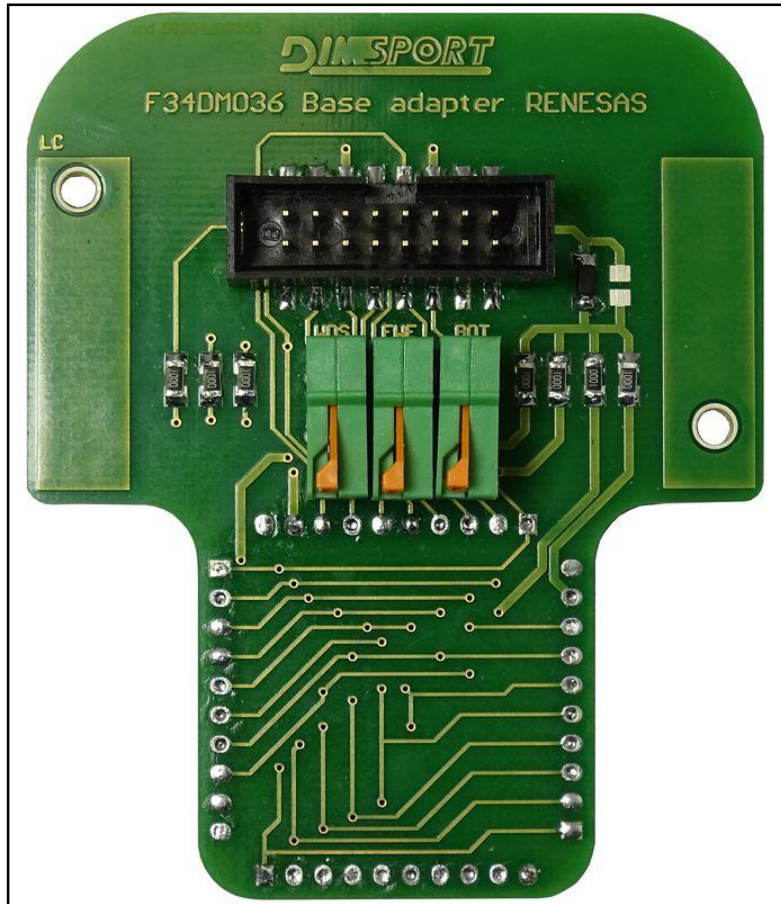
In order to read&write properly the ECU it is necessary to perform a LINK, remove it before placing back the ECU into the vehicle.



DENSO MB279700-9621 SH72546R JTAG VOLVO PETROL

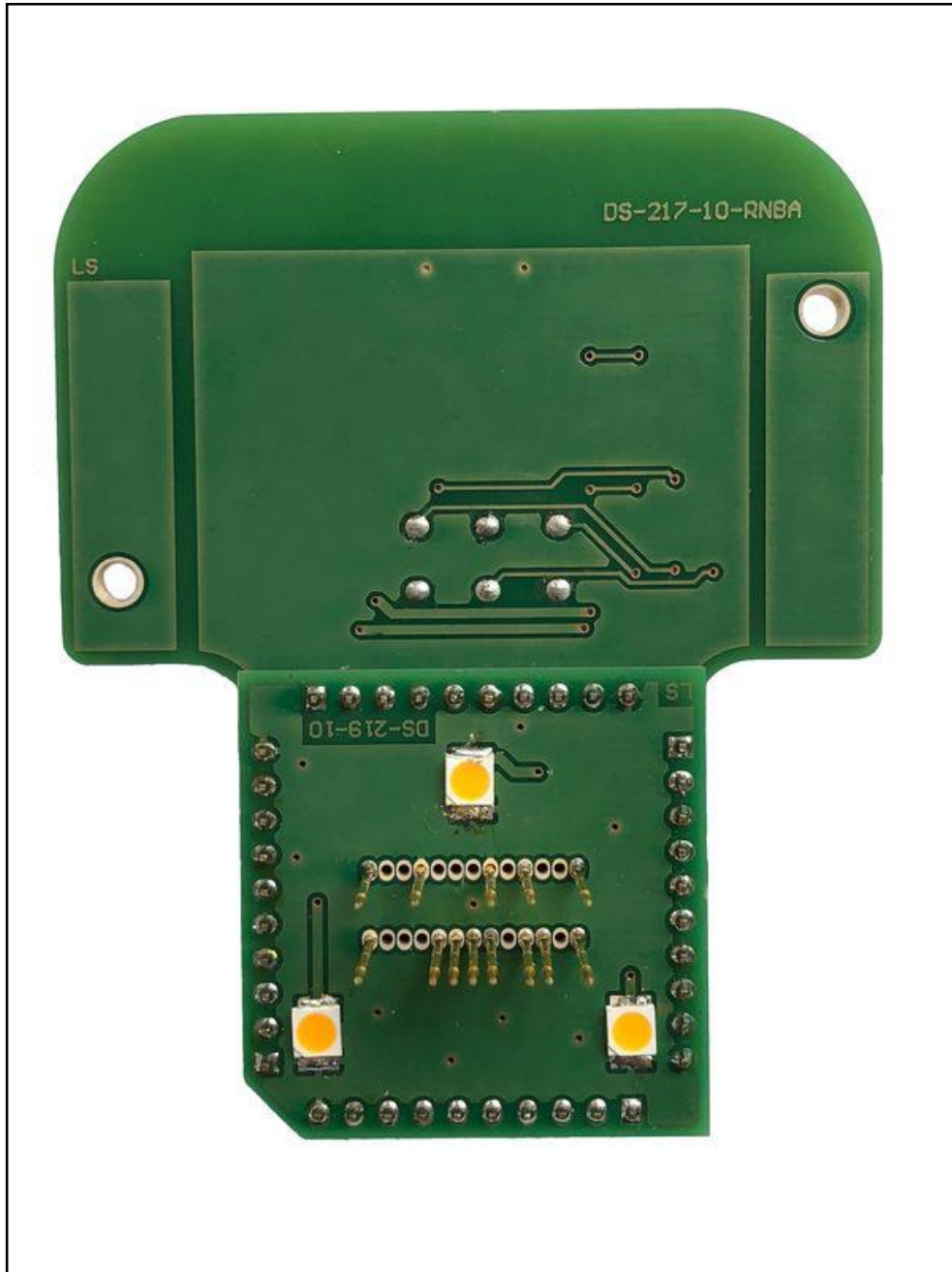
METAL POSITIONING FRAME CONNECTION

For the metal positioning frame connection are required the F34DM036 +F34DM038 adapters, JTAG pads for the communication are placed below the microprocessor.



DENSO MB279700-9621 SH72546R JTAG VOLVO PETROL

Set up the base adapter F32DM036 with the F34DM037 adapter as displayed in the following picture.



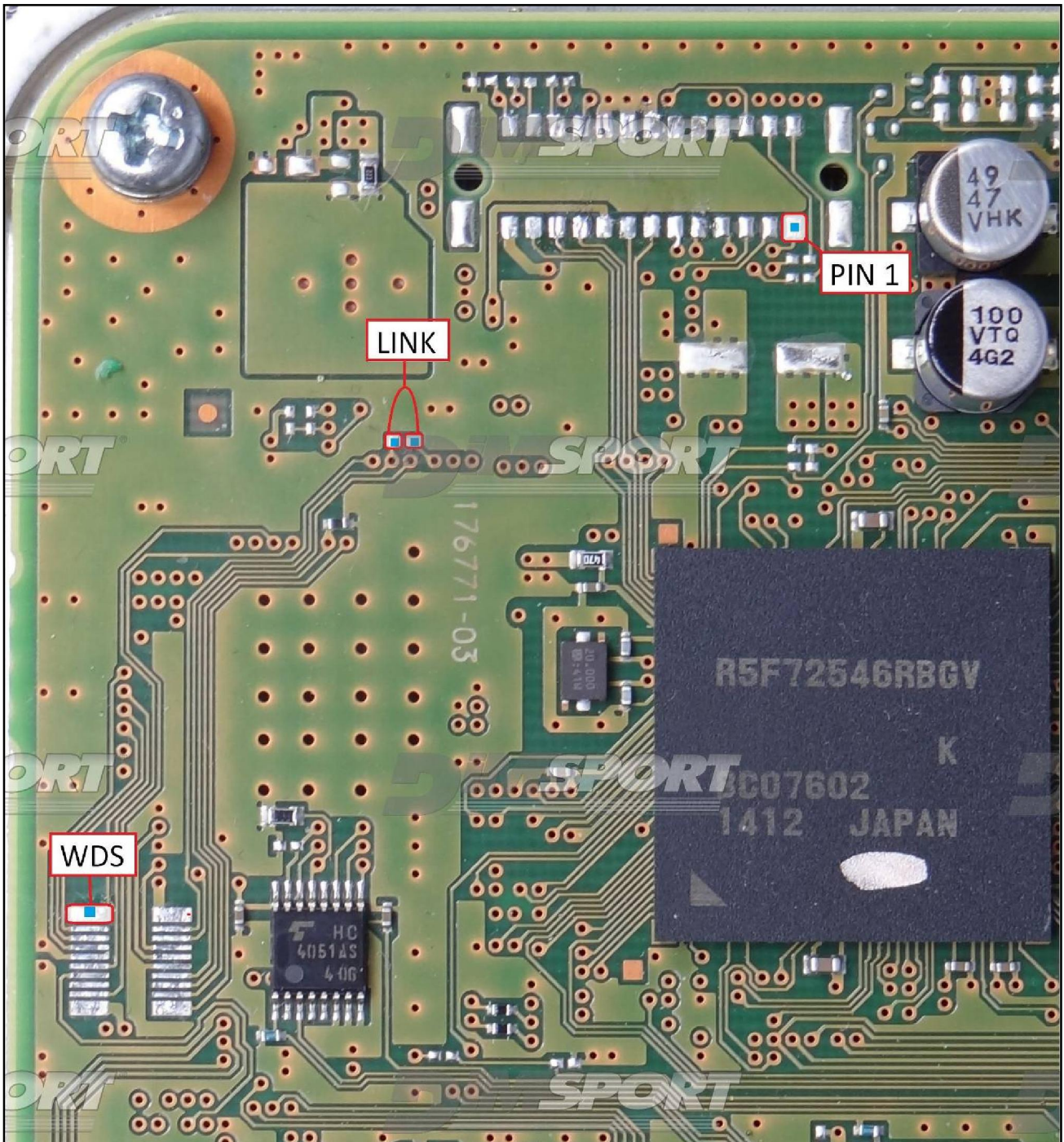
DENSO MB279700-9621 SH72546R JTAG VOLVO PETROL

Warning

In order to read&write properly the ECU it is necessary to perform a LINK, remove it before placing back the ECU into the vehicle.

Verify the PIN 1 location and connect the pin WDS to the corresponding clamp on the base adapter F34DM036 as in displayed in the following picture.

Place F34DM036+F34DM038 adapters as displayed in the following picture.



DENSO MB279700-9621 SH72546R JTAG VOLVO PETROL

