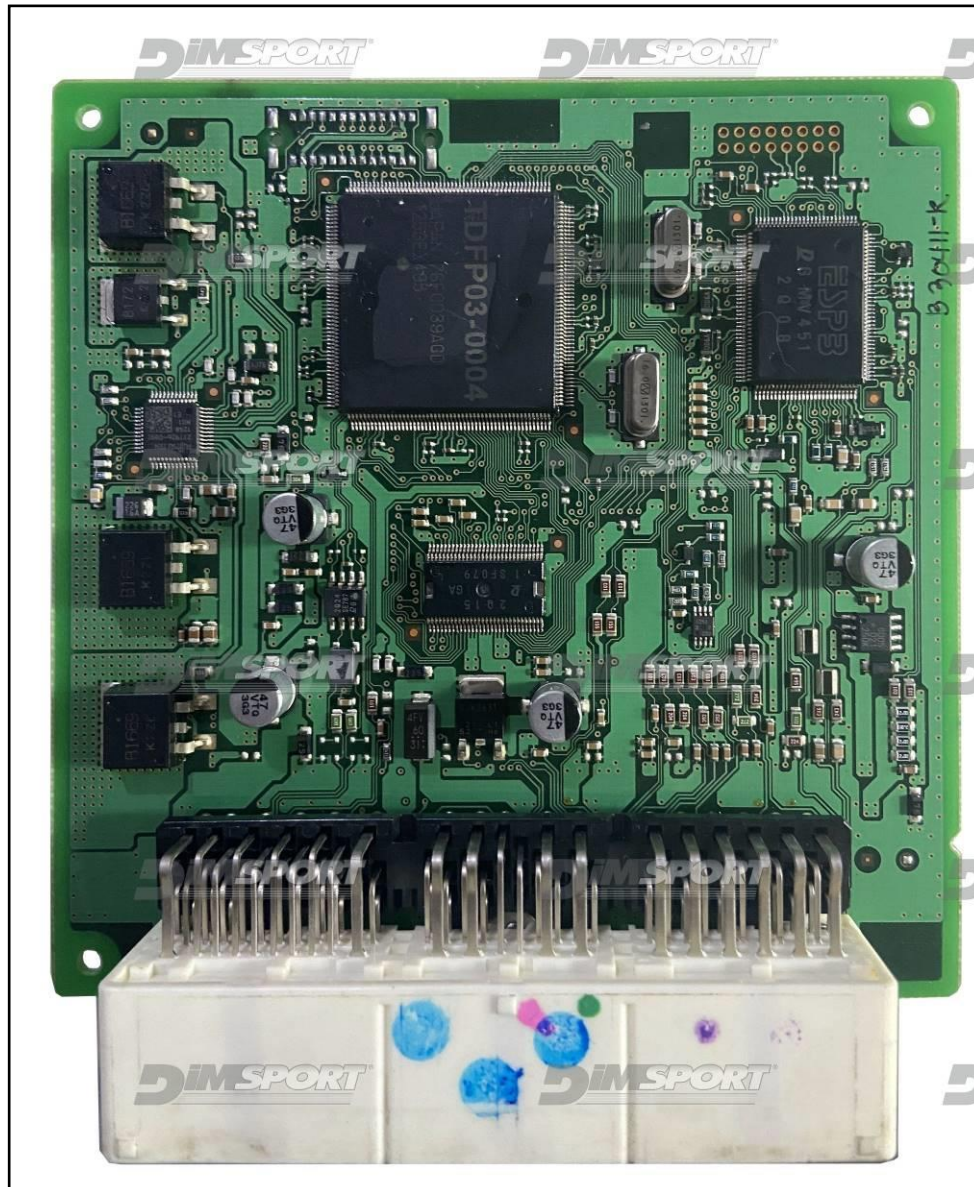
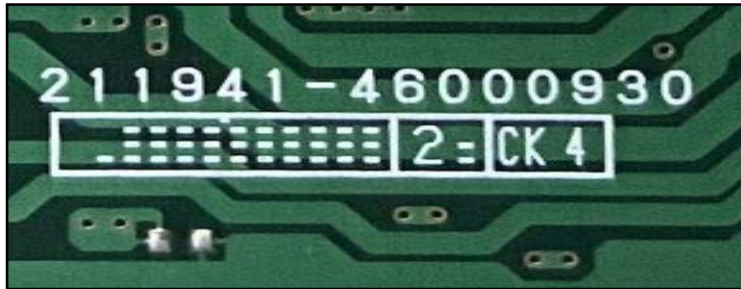


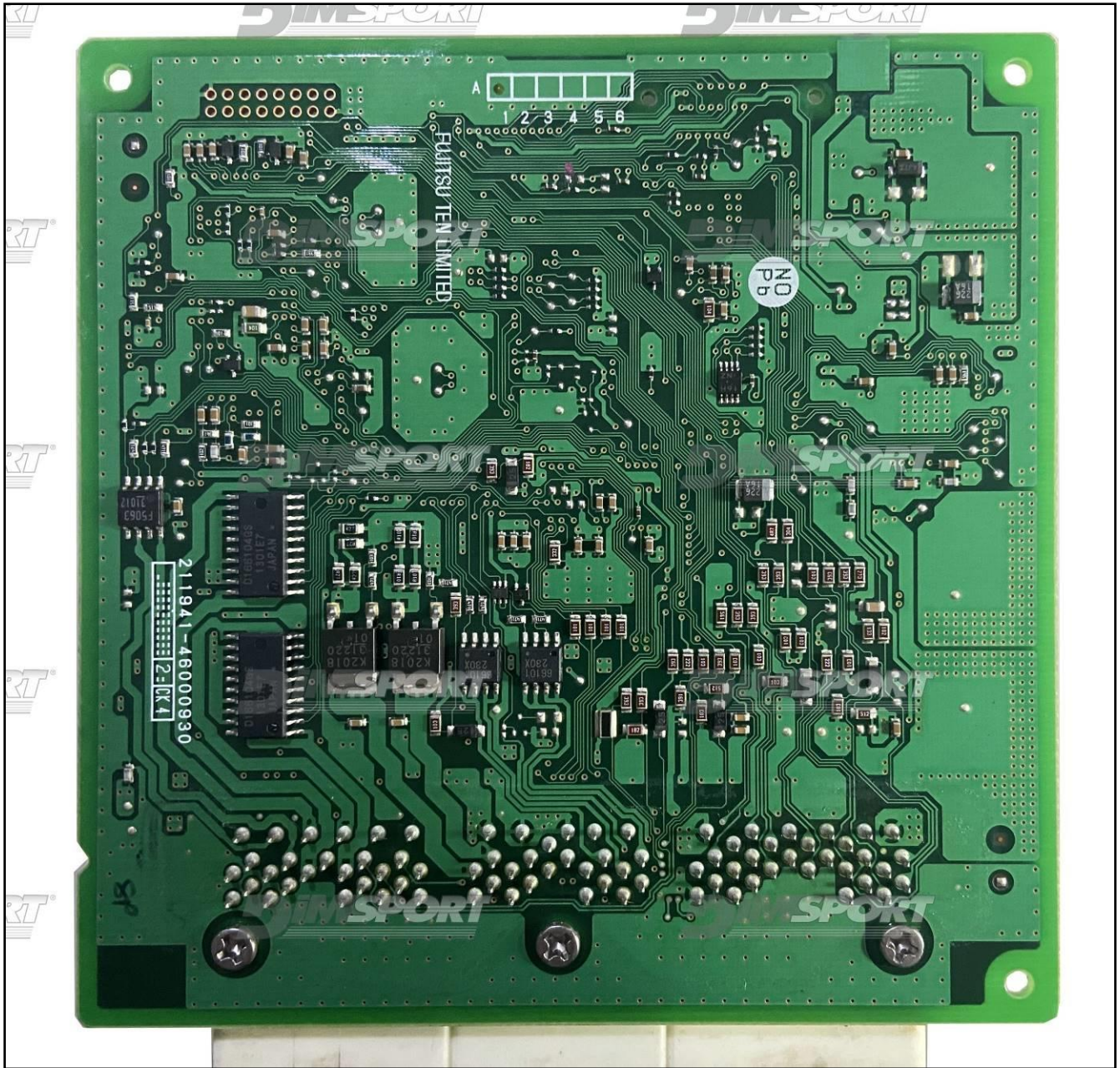
DENSO NEC76F0039AGD 211941-46000930 TOYOTA

plugin 1623

WARNING: for a correct identification of the ECU it is necessary to open the ECU and always check that the ECU numbers printed on the motherboard are the same as the numbers declared on the manual. Do not trust the numbers on the ECU cover.



DENSO NEC76F0039AGD 211941-46000930 TOYOTA

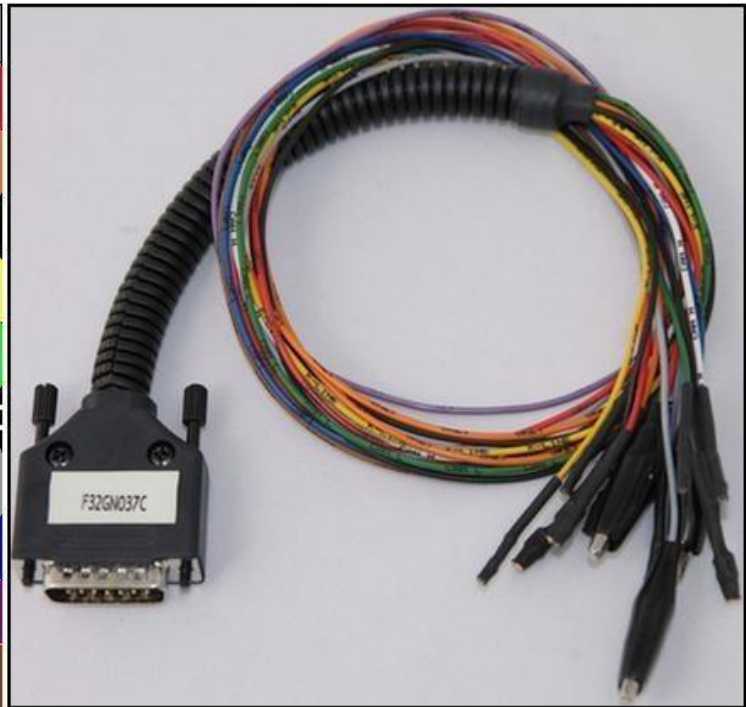


DENSO NEC76F0039AGD 211941-46000930 TOYOTA

DIRECT CONNECTION

For the connection use the cable F32GN037C/D connected to the ECU.
Make sure that the POWER led (red) on Trasdata is ON.

COLORE FILO WIRE COLOUR	DESCRIZIONE DESCRIPTION
ROSSO RED	POSITIVO DIRETTO POWER BATTERY
ARANCIO ORANGE	POSITIVO SOTTO QUADRO POWER SWITCH ON
NERO BLACK	MASSA GND
GIALLO YELLOW	KLINE
VERDE GREEN	CAN LOW
BIANCO WHITE	CAN HIGH
GRIGIO GREY	POL4 BOOT
BLU BLUE	POL5 CNF1
VIOLA/GRIGIO PURPLE/GREY	TENSIONE PROG. PROG. VOLTAGE
MARRONE BROWN	RESET





ECU CONNECTOR



LOOSE WIRES CONNECTION:

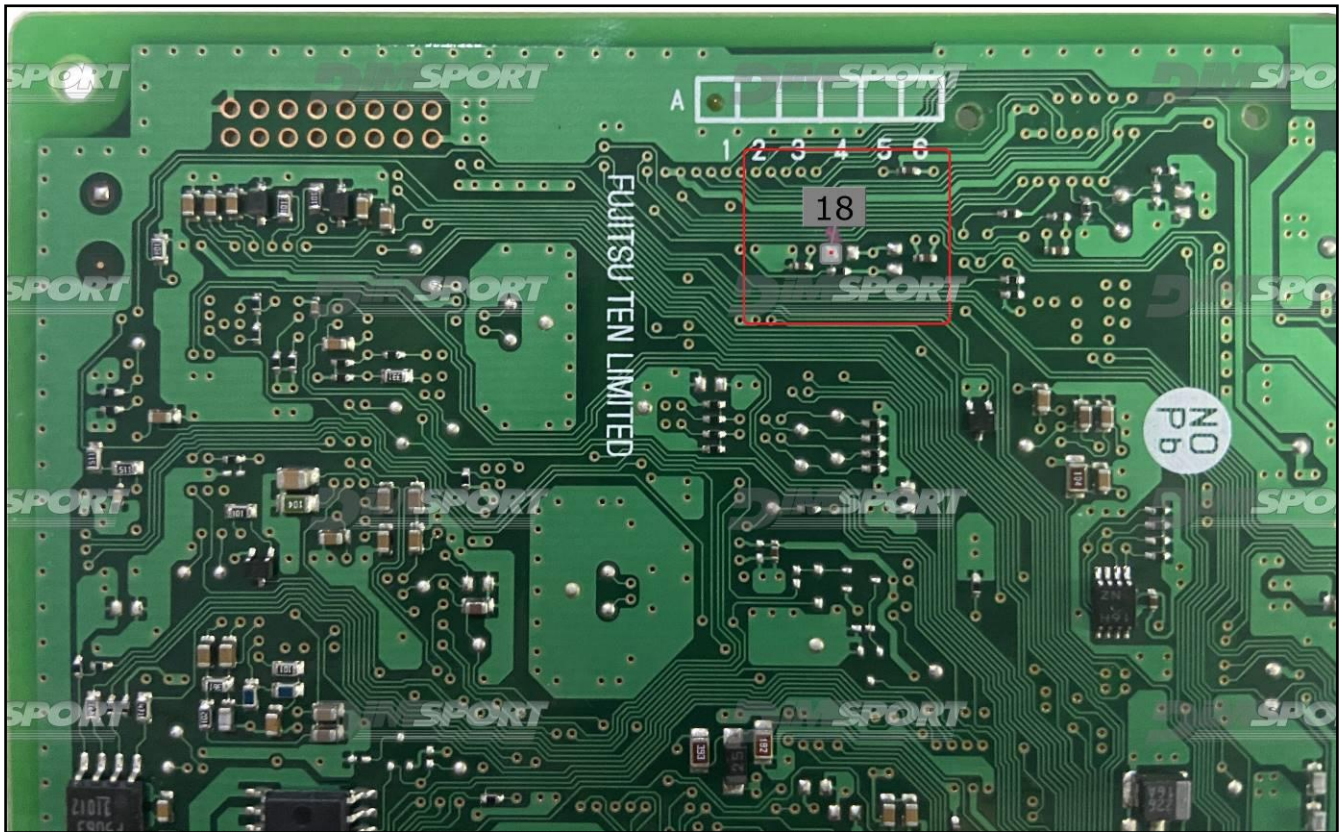
For the READING and WRITING procedure use the FLAT cable F34NTF53

Pin	Colore Colour
11	Non usato Not used
12	Non usato Not used
13	Non usato Not used
14	Non usato Not used
15	Verde Green
16	Blu Blue
17	Viola Violet
18	Grigio Grey
19	Bianco White
20	Nero Black
21	Marrone Brown
22	Rosso Red
23	Arancio Orange
24	Giallo Yellow
25	Verde Green
26	Non usato Not used

DENSO NEC76F0039AGD 211941-46000930 TOYOTA

WARNING: for a correct reading and writing operation it is necessary identify the pin 18 to enable the Microprocessor communication.



DENSO NEC76F0039AGD 211941-46000930 TOYOTA

WARNING: for a correct reading and writing operation it is necessary to perform a LINK between the pads displayed in the picture below. Remove the LINK before placing back the ECU into the car.

