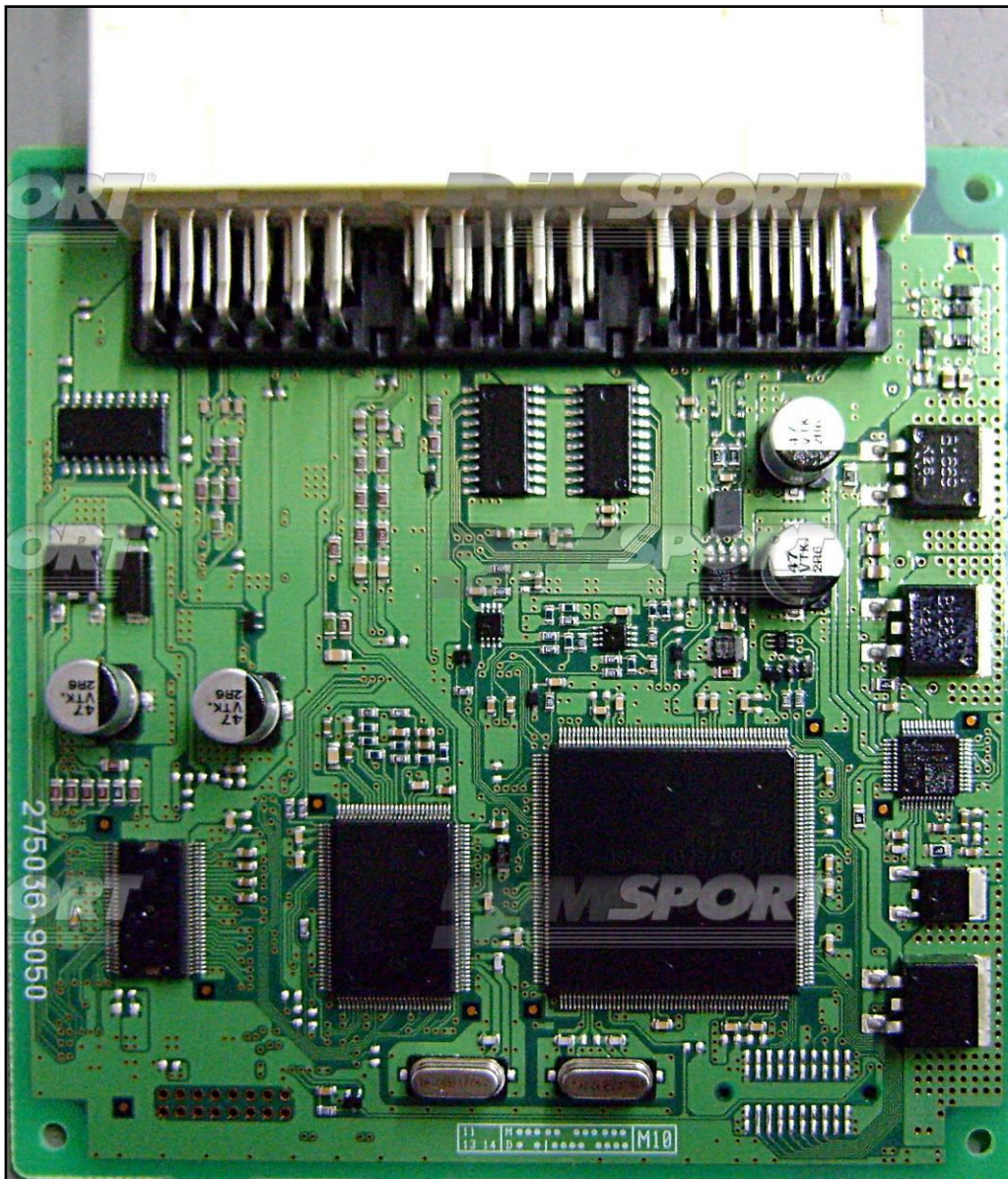


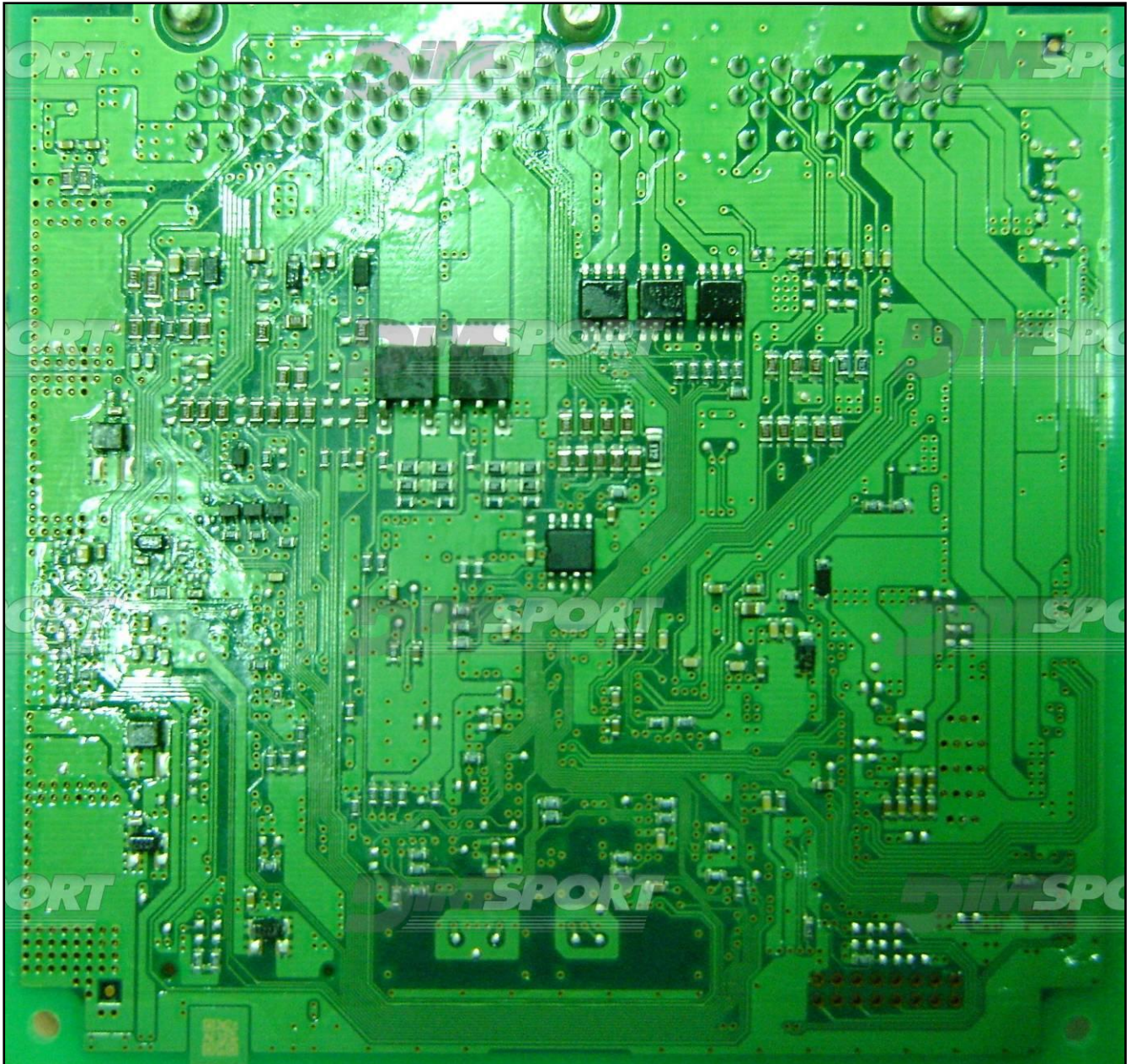
DENSO NEC76F0039AGD 275036-9050 TOYOTA

plugin 887

WARNING : for a correct identification of the ECU it is necessary to open the ECU and always check that the ECU numbers printed on the motherboard are the same as the numbers declared on the manual. Do not trust the numbers on the ECU cover.



DENSO NEC76F0039AGD 275036-9050 TOYOTA

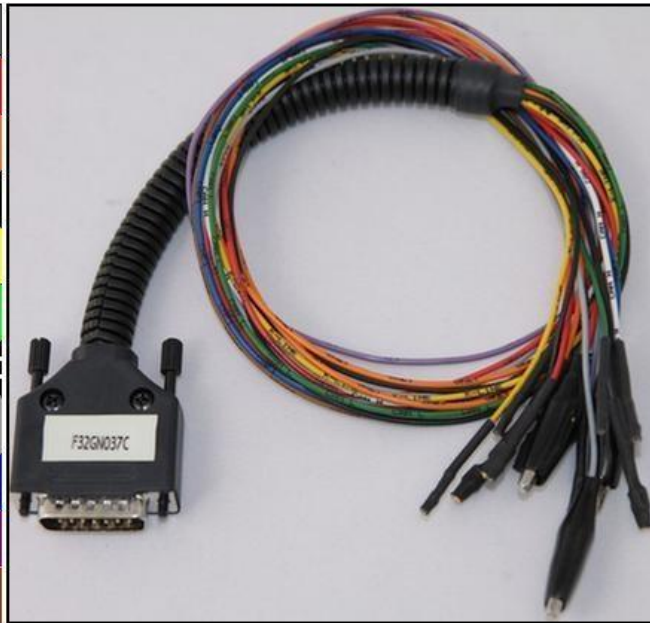


DENSO NEC76F0039AGD 275036-9050 TOYOTA

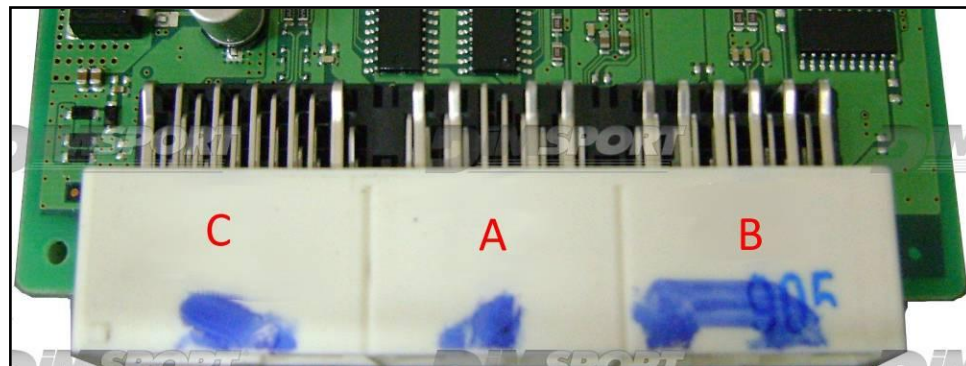
DIRECT CONNECTION

For the connection use the cable F32GN037C connected to the ECU.
Make sure that the POWER led (red) on Trasdata is ON.

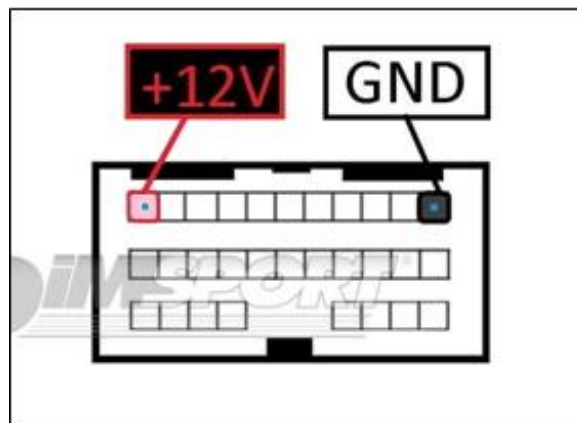
COLORE FILO WIRE COLOUR	DESCRIZIONE DESCRIPTION
ROSSO RED	POSITIVO DIRETTO POWER BATTERY
ARANCIO ORANGE	POSITIVO SOTTO QUADRO POWER SWITCH ON
NERO BLACK	MASSA GND
GIALLO YELLOW	KLINE
VERDE GREEN	CAN LOW
BIANCO WHITE	CAN HIGH
GRIGIO GREY	POL4 BOOT
BLU BLUE	POL5 CNF1
VIOLA/GRIGIO PURPLE/GREY	TENSIONE PROG. PROG. VOLTAGE
MARRONE BROWN	RESET



ECU CONNECTOR





The connector for the 12V and GND signals is the one identified with the letter C written on top, please check the previous image.



LOOSE WIRES CONNECTION:

For the READING and WRITING procedure use the FLAT cable F34NTF53

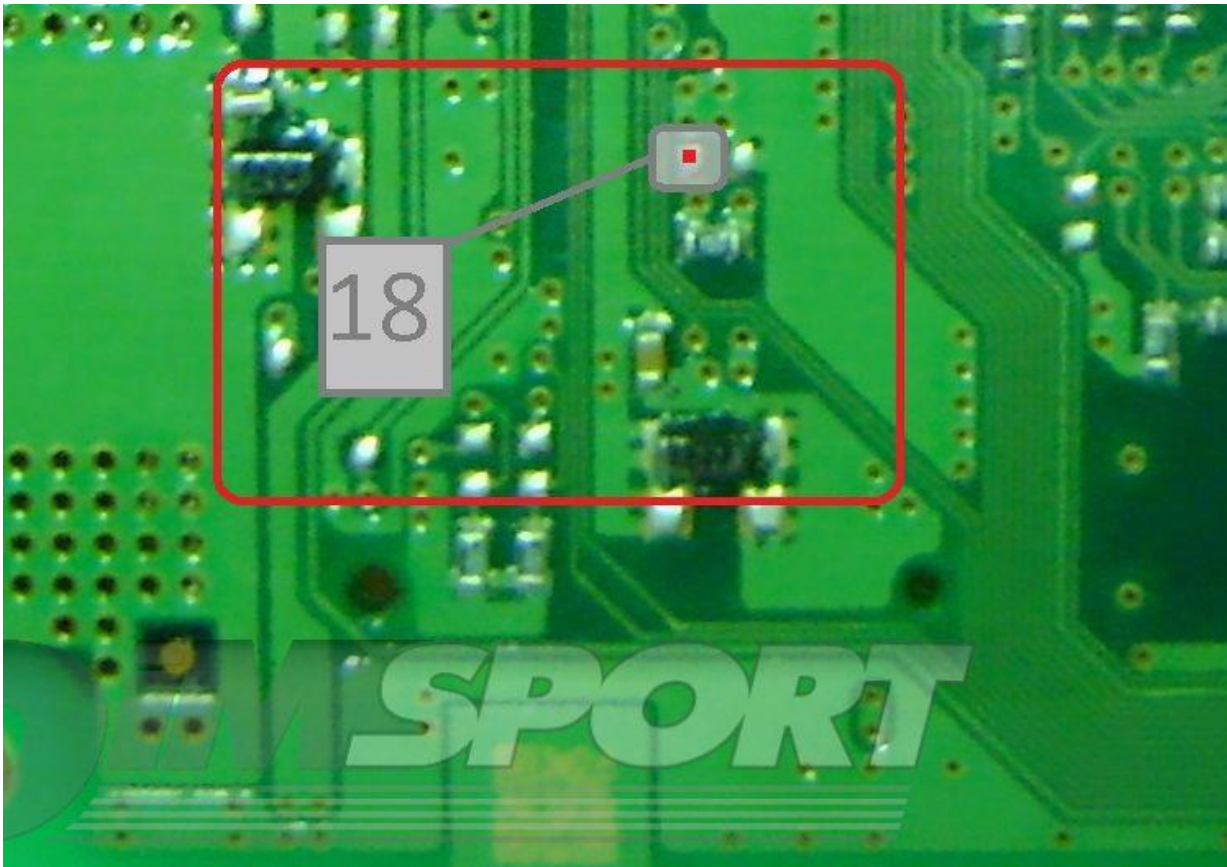



Pin	Colore Colour
11	Non usato Not used
12	Non usato Not used
13	Non usato Not used
14	Non usato Not used
15	Verde Green
16	Blu Blue
17	Viola Violet
18	Grigio Grey
19	Bianco White
20	Nero Black
21	Marrone Brown
22	Rosso Red
23	Arancio Orange
24	Giallo Yellow
25	Verde Green
26	Non usato Not used

WARNING:

on this TOYOTA ECU the soldering pads are 180° turned over, for thsi reason it is possible ONLY the direct loose wires connection. It is NOT possible to use the DIMA nor the soldering adapter.

WARNING: the grey wire 18 must be soldered on the pad 18 placed on the microprocessor's opposite side.



DENSO NEC76F0039AGD 275036-9050 TOYOTA

For a correct reading and writing operation it is necessary to perform a LINK between the pads displayed in the picture here below. Remove the LINK before placing back the ECU into the car.

