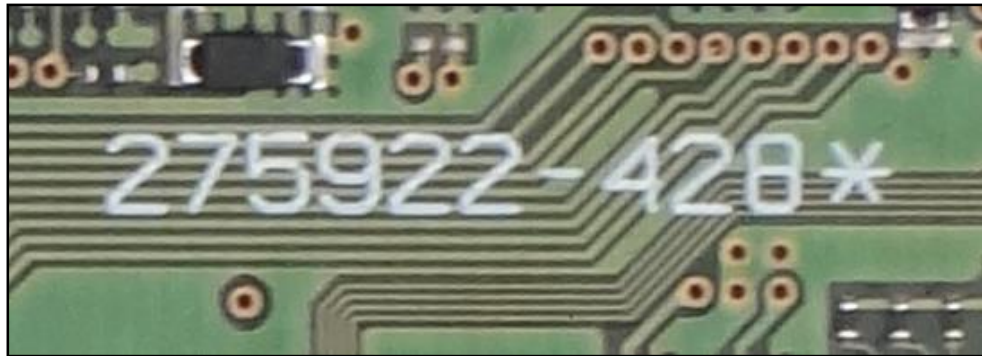


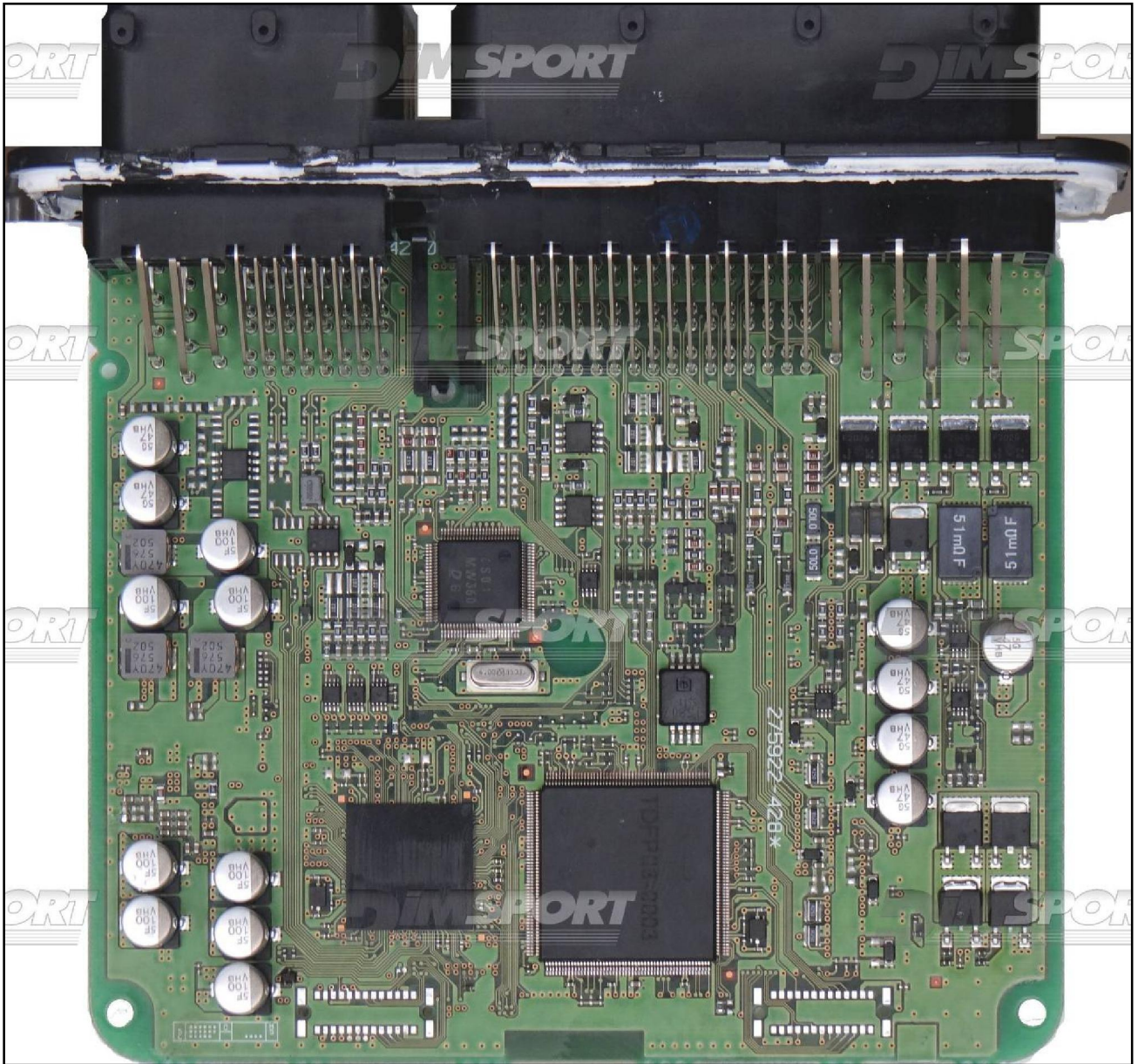
DENSO NEC76F0070 275992-428 TOYOTA

plugin **794**

**WARNING :** for a correct identification of the ECU it is necessary to open the ECU and always check that the ECU numbers printed on the motherboard are the same as the numbers declared on the manual. Do not trust the numbers on the ECU cover.



DENSO NEC76F0070 275992-428 TOYOTA



## DENSO NEC76F0070 275992-428 TOYOTA

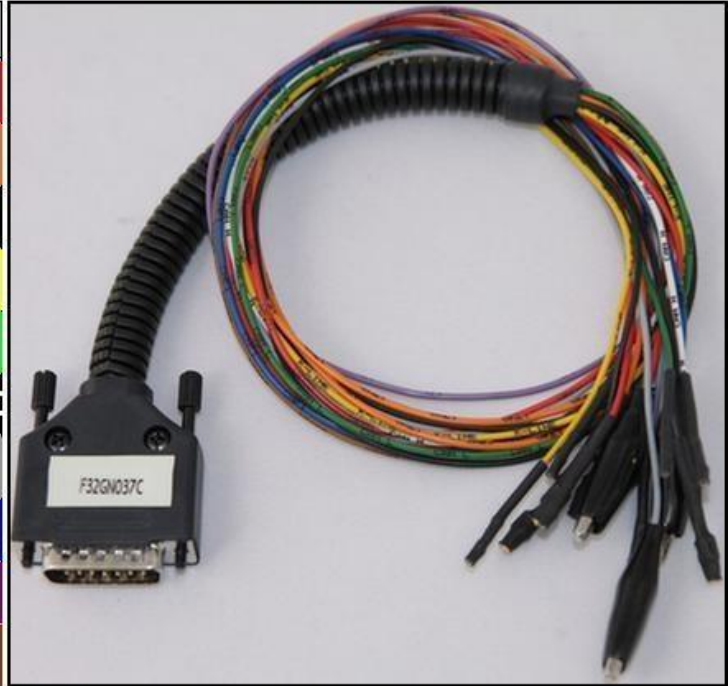
### DIRECT CONNECTION

For the connection use the cable F32GN037C connected to the ECU.

Make sure that the POWER led (red) on Trasdata is ON.

These connections are required for all the connection approaches: loose wires, soldering adapter, DIMA adapter.

| COLORE FILO<br>WIRE COLOUR  | DESCRIZIONE<br>DESCRIPTION               |
|-----------------------------|--|
| ROSSO<br>RED                | POSITIVO DIRETTO<br>POWER BATTERY        |
| ARANCIO<br>ORANGE           | POSITIVO SOTTO QUADRO<br>POWER SWITCH ON |
| NERO<br>BLACK               | MASSA<br>GND                             |
| GIALLO<br>YELLOW            | KLINE                                    |
| VERDE<br>GREEN              | CAN LOW                                  |
| BIANCO<br>WHITE             | CAN HIGH                                 |
| GRIGIO<br>GREY              | POL4<br>BOOT                             |
| BLU<br>BLUE                 | POL5<br>CNF1                             |
| VIOLA/GRIGIO<br>PURPLE/GREY | TENSIONE PROG.<br>PROG. VOLTAGE          |
| MARRONE<br>BROWN            | RESET                                    |



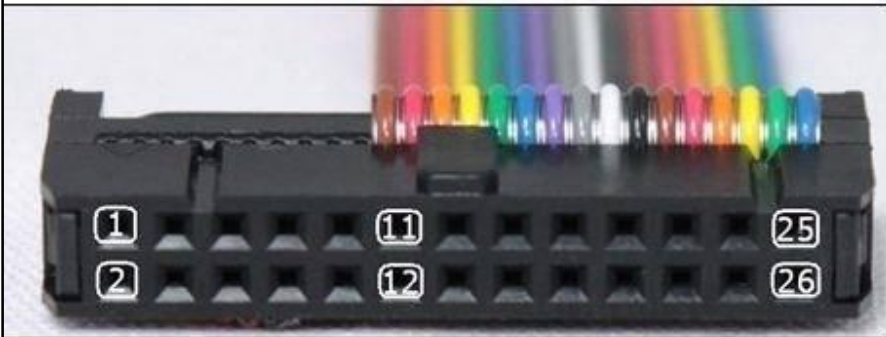

### ECU CONNECTOR



DENSO NEC76F0070 275992-428 TOYOTA

**LOOSE WIRES CONNECTION:**

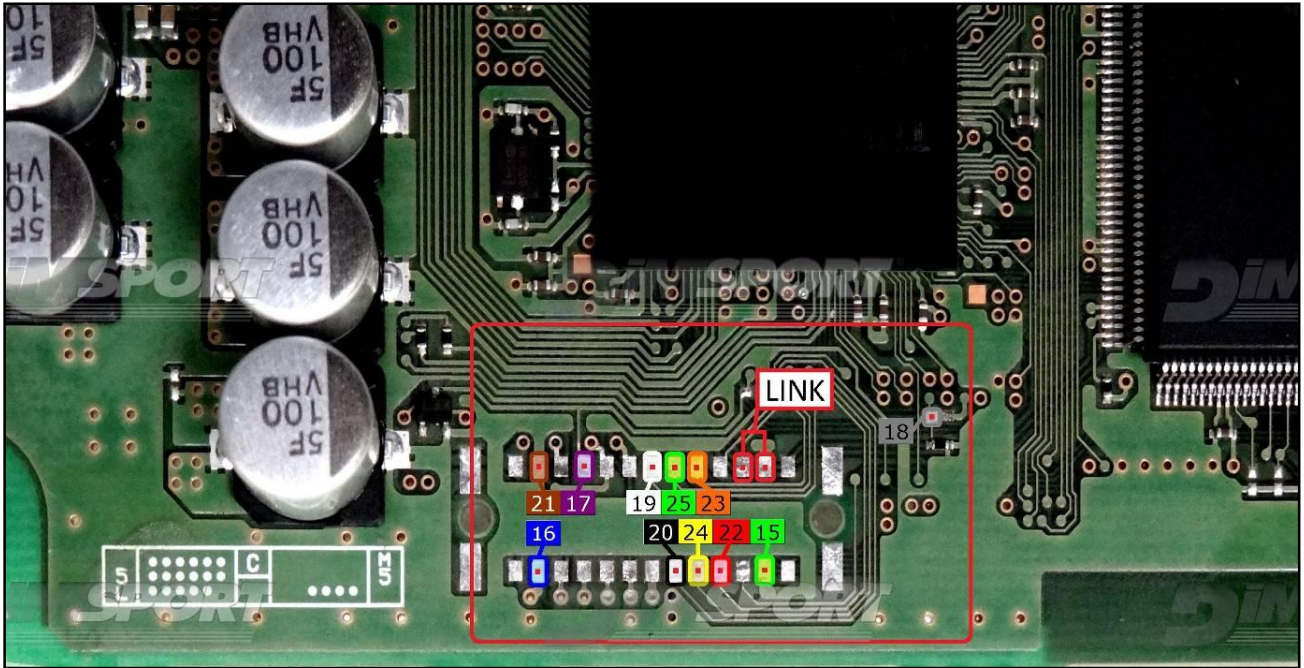
For the READING and WRITING procedure use the FLAT cable F34NTF53

| Pin | Colore<br>Colour      |
|-----|-----------------------|
| 11  | Non usato<br>Not used |
| 12  | Non usato<br>Not used |
| 13  | Non usato<br>Not used |
| 14  | Non usato<br>Not used |
| 15  | Verde<br>Green        |
| 16  | Blu<br>Blue           |
| 17  | Viola<br>Violet       |
| 18  | Grigio<br>Grey        |
| 19  | Bianco<br>White       |
| 20  | Nero<br>Black         |
| 21  | Marrone<br>Brown      |
| 22  | Rosso<br>Red          |
| 23  | Arancio<br>Orange     |
| 24  | Giallo<br>Yellow      |
| 25  | Verde<br>Green        |
| 26  | Non usato<br>Not used |

DENSO NEC76F0070 275992-428 TOYOTA

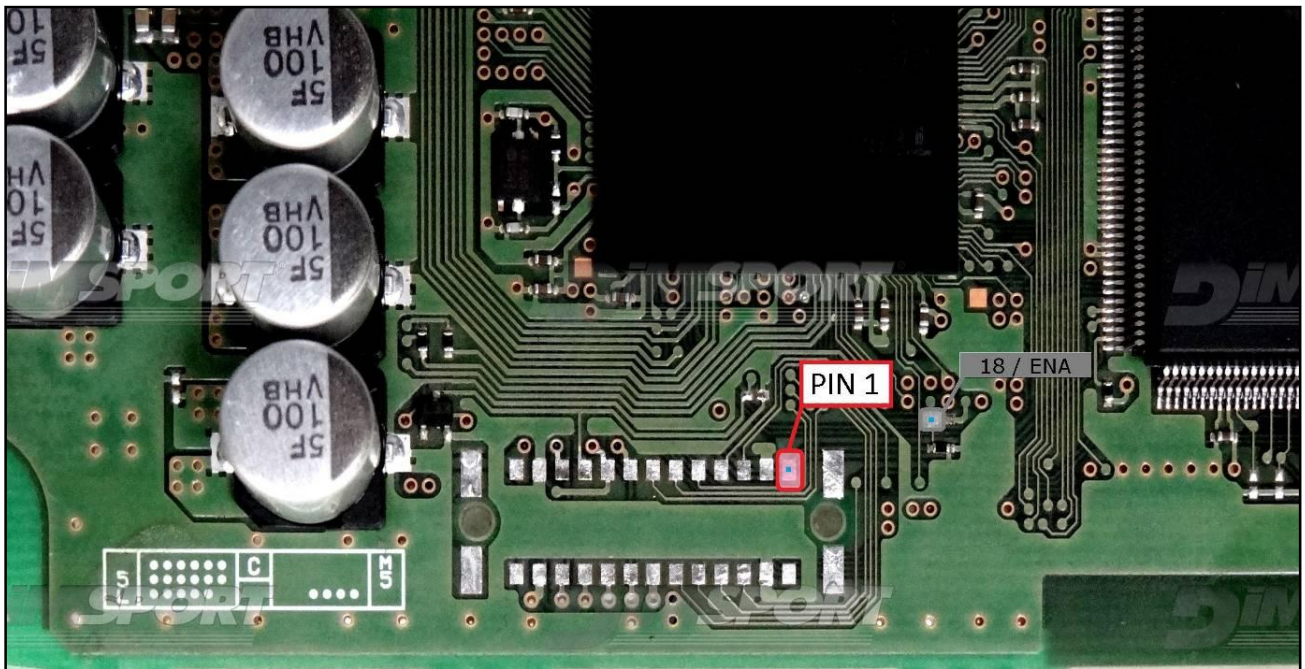
**WARNING:** for a correct reading and writing operation it is necessary to perform a LINK between the pads displayed in the picture here below. Remove the LINK before placing back the ECU into the car.



DENSO NEC76F0070 275992-428 TOYOTA

**F34NTA17 Soldering adapter connection or  
F34DM024 DIMA adapter connection.**

In both cases, for a correct connection, it is necessary to identify the pin 1 for the reading&writing procedures and the pin 18 to enable the Microprocessor communication.

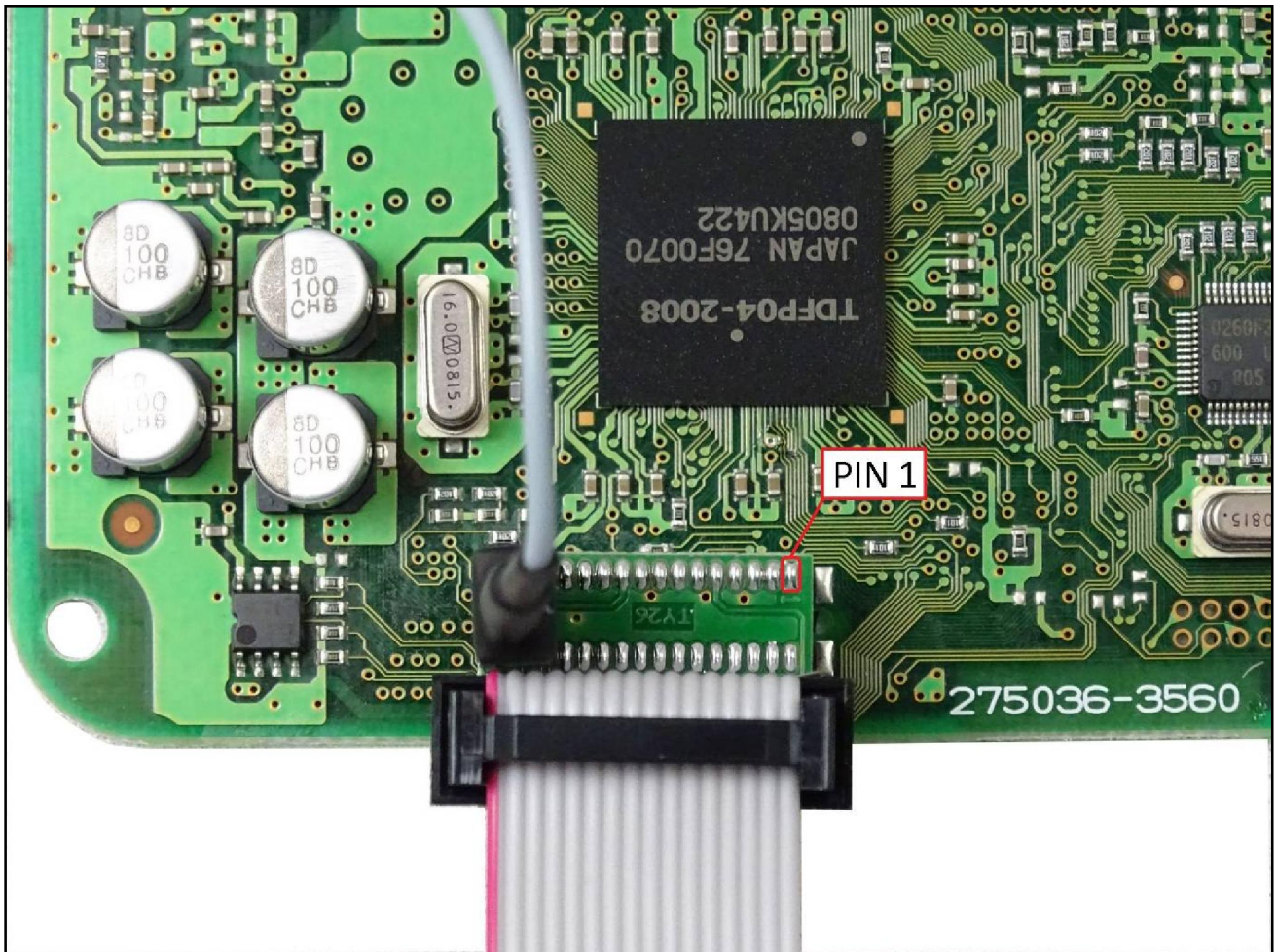


DENSO NEC76F0070 275992-428 TOYOTA

### F34NTA17 Soldering adapter connection

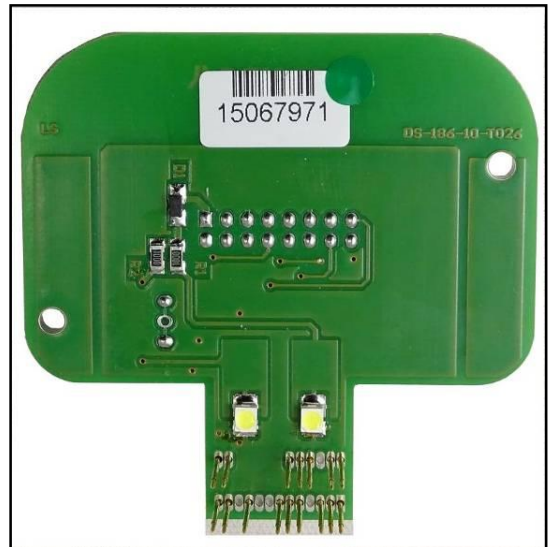
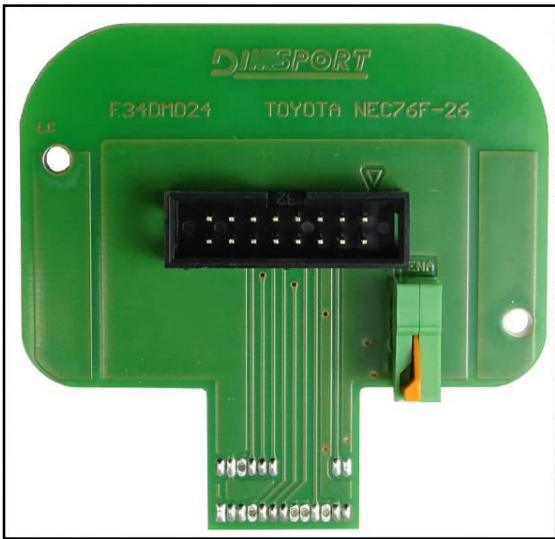


By using the grey wire supplied with the adapter connect the pad 18 (see pg.6) to the specific connector on the adapter itself.  
The following picture of the F34NTA17 adapter connection is merely indicative.



DENSO NEC76F0070 275992-428 TOYOTA

### F34DM024 DIMA adapter connection



By using a wire connect the pad 18 (see pg.6) to the specific orange clamp ENA present on the F34DM024 DIMA adapter.  
The following picture of the F34DM024 DIMA adapter connection is merely indicative.

