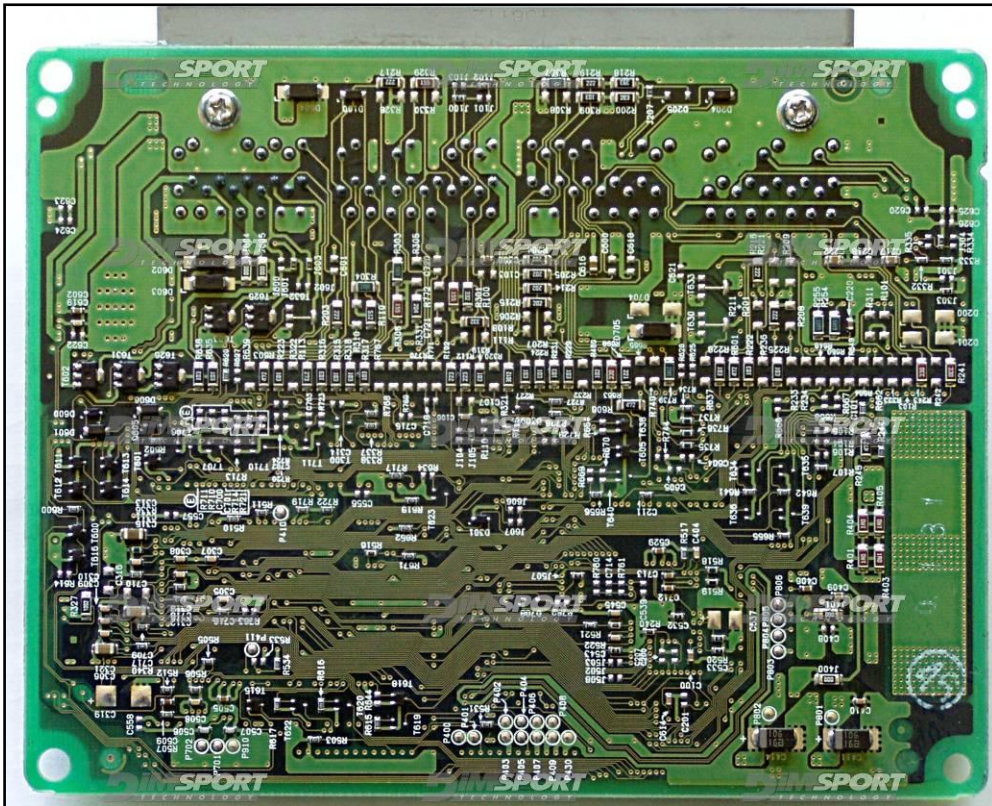
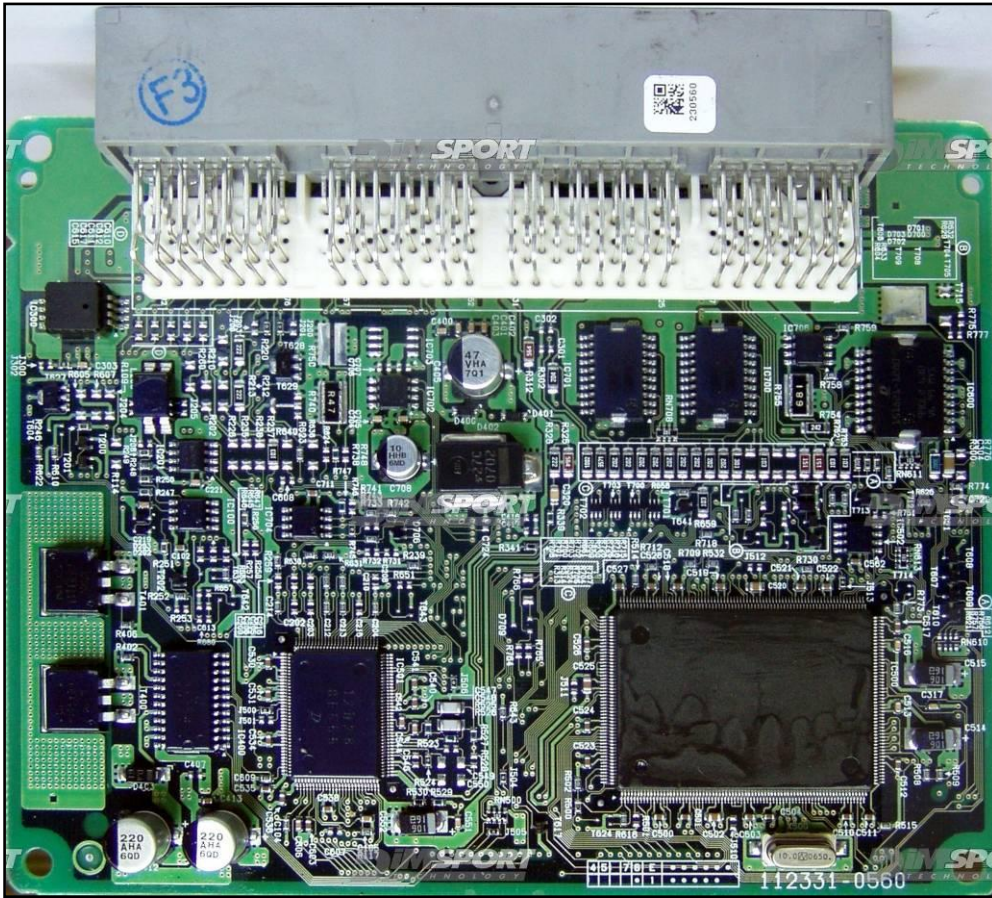


DENSO SH7055 076JB SUZUKI

plugin 331-813



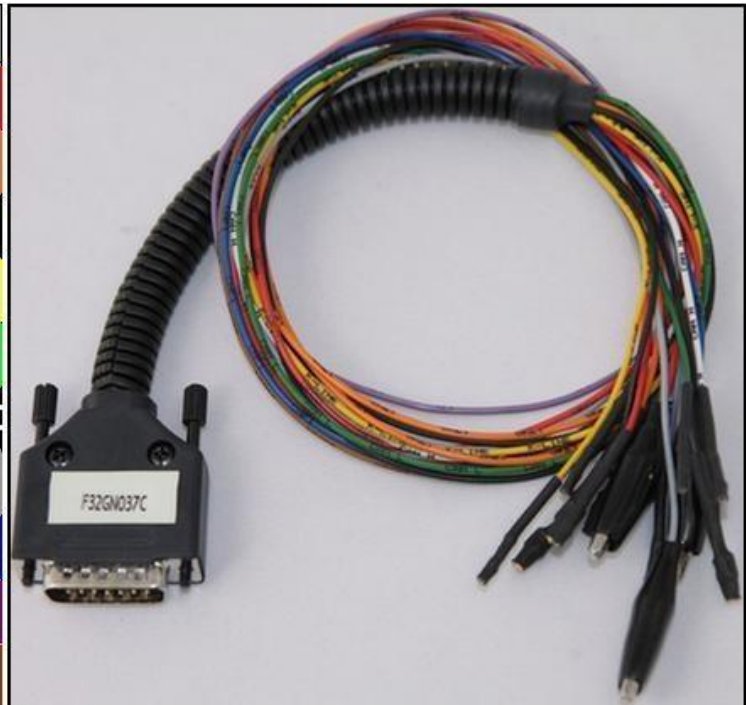
DENSO SH7055 076JB SUZUKI

DIRECT CONNECTION

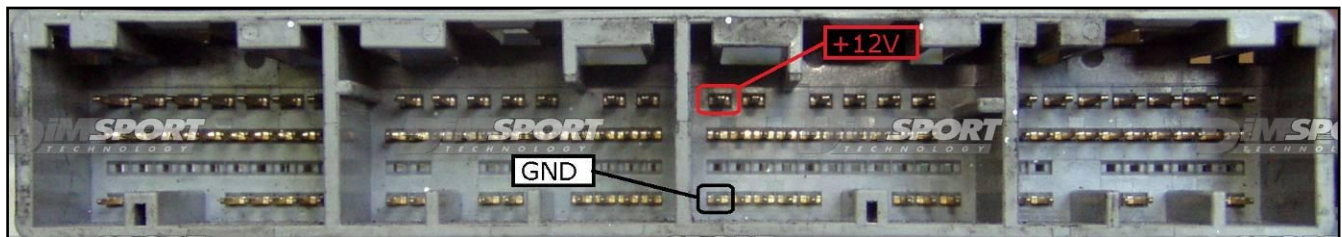
In order to connect to the ECU use the CABLE F32GN037C/D.

Make sure that the POWER led (red) on Trasdata is ON.

COLORE FILO WIRE COLOUR	DESCRIZIONE DESCRIPTION
ROSSO RED	POSITIVO DIRETTO POWER BATTERY
ARANCIO ORANGE	POSITIVO SOTTO QUADRO POWER SWITCH ON
NERO BLACK	MASSA GND
GIALLO YELLOW	KLINE
VERDE GREEN	CAN LOW
BIANCO WHITE	CAN HIGH
GRIGIO GREY	POL4 BOOT
BLU BLUE	POL5 CNF1
VIOLA/GRIGIO PURPLE/GREY	TENSIONE PROG. PROG. VOLTAGE
MARRONE BROWN	RESET



ECU CONNECTOR



WARNING :

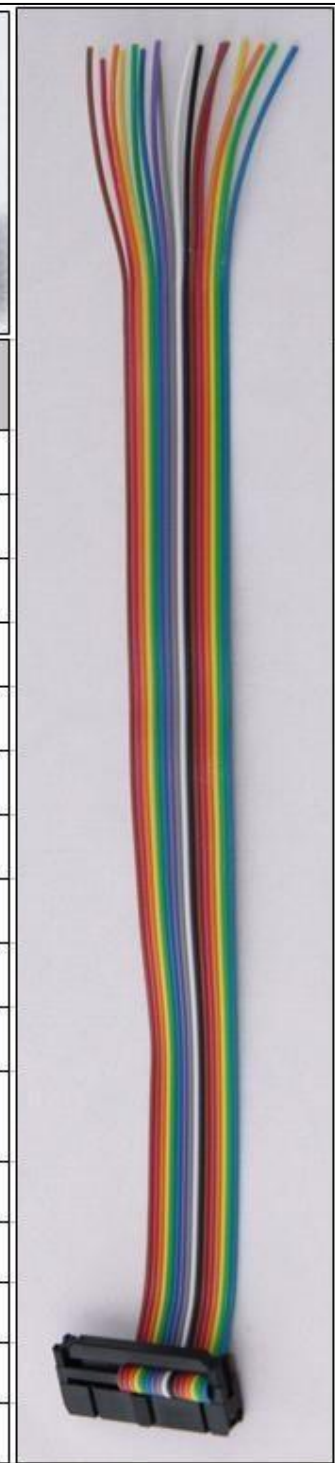
on this ECU you must use two different flat cables: one is for the READING procedure and one is for the WRITING procedure.

DIRECT CONNECTION – ECU READING:

For the READING procedure use the FLAT cable F34NTF53

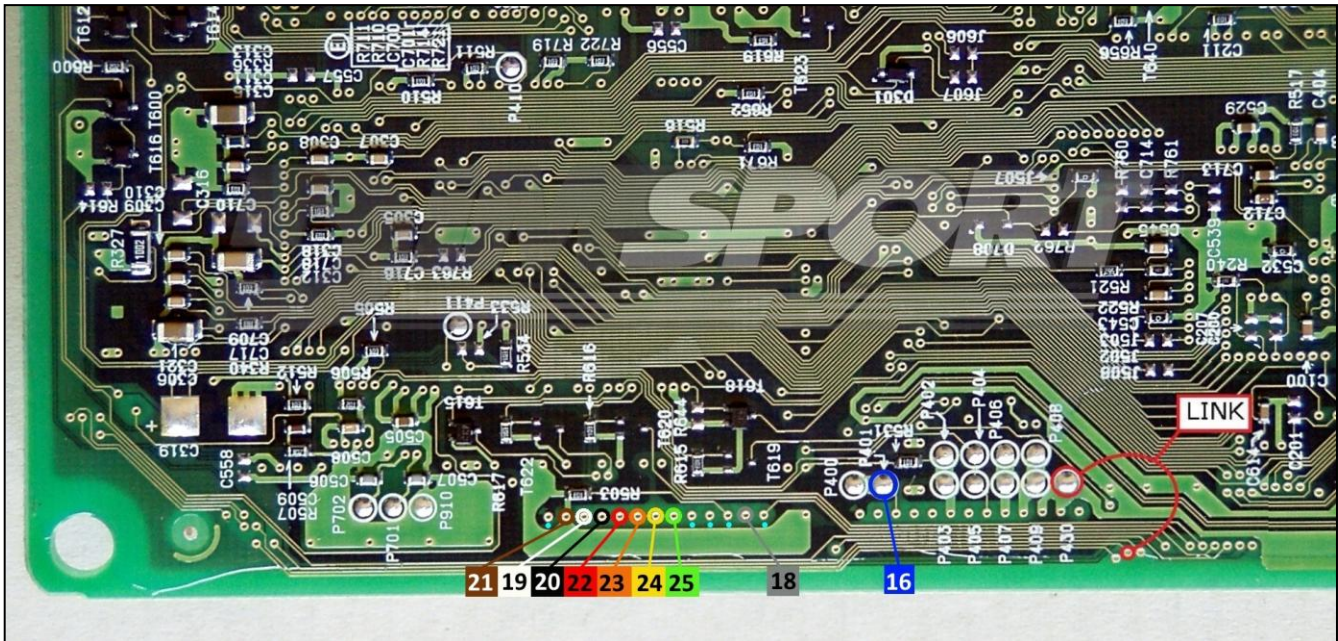


Pin	Colore Colour
11	Non usato Not used
12	Non usato Not used
13	Non usato Not used
14	Non usato Not used
15	Non usato Not used
16	Blu Blue
17	Non usato Not used
18	Grigio Grey
19	Bianco White
20	Nero Black
21	Marrone Brown
22	Rosso Red
23	Arancio Orange
24	Giallo Yellow
25	Verde Green
26	Non usato Not used



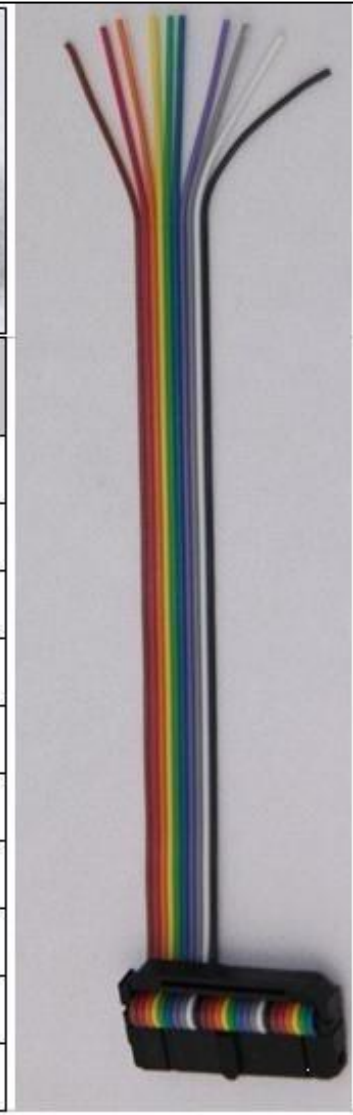
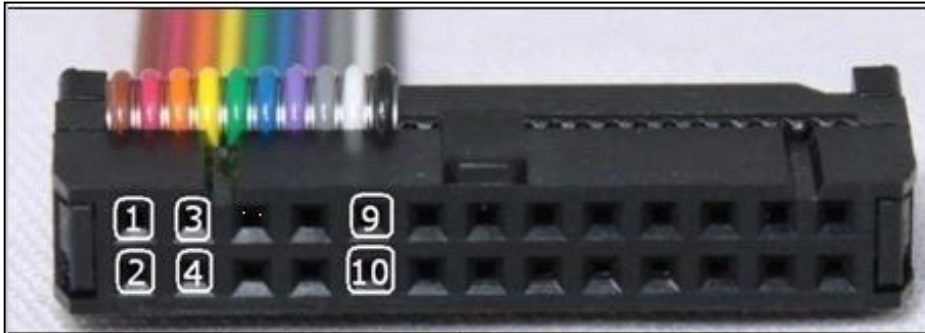
DENSO SH7055 076JB SUZUKI

For a correct soldering procedure clean very well the soldering lay-by pins from the plastic film. We suggest you to use a fine grit glass-paper smoothing by gentle pressure the connection of the lay by pins. In order to read the ECU it is necessary to LINK the 2 pads as shown in the picture. At the end of the correct reading remove the resistor and the LINK.



DIRECT CONNECTION – ECU WRITING:

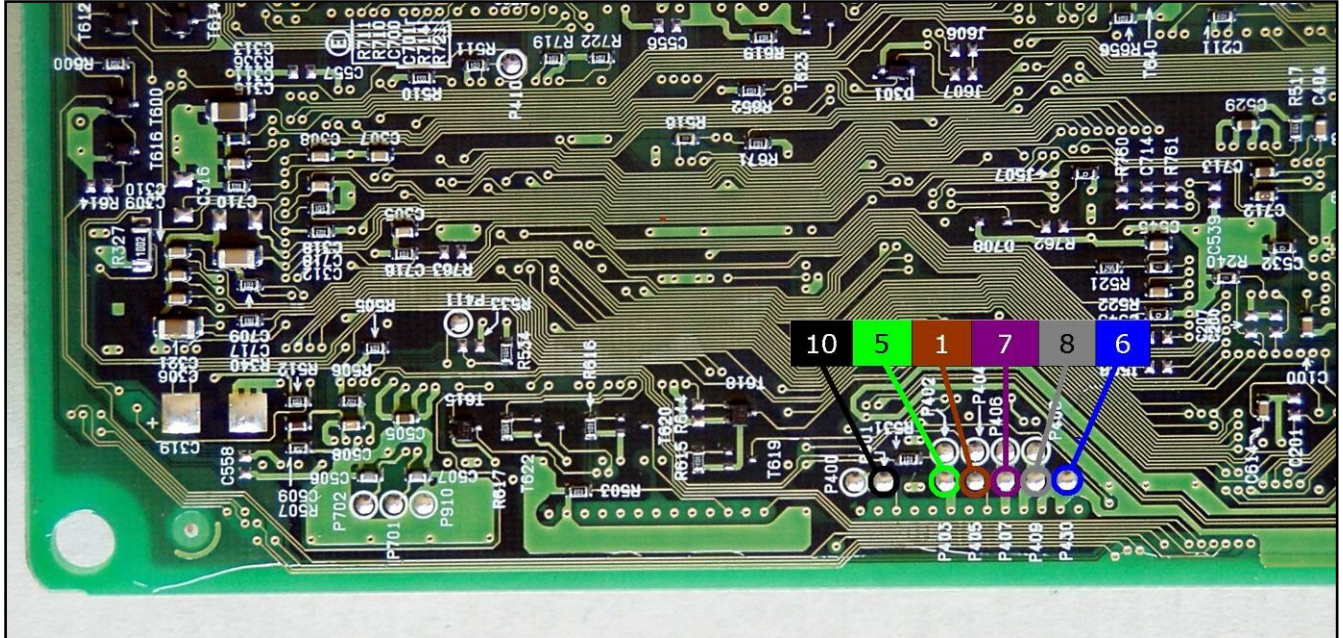
For the WRITING procedure use the FLAT cable F34NTF51



Pin	Colore Colour
1	Marrone Brown
2	Non usato Not used
3	Non usato Not used
4	Non usato Not used
5	Verde Green
6	Blu Blue
7	Viola Violet
8	Grigio Grey
9	Non usato Not used
10	Nero Black

DENSO SH7055 076JB SUZUKI

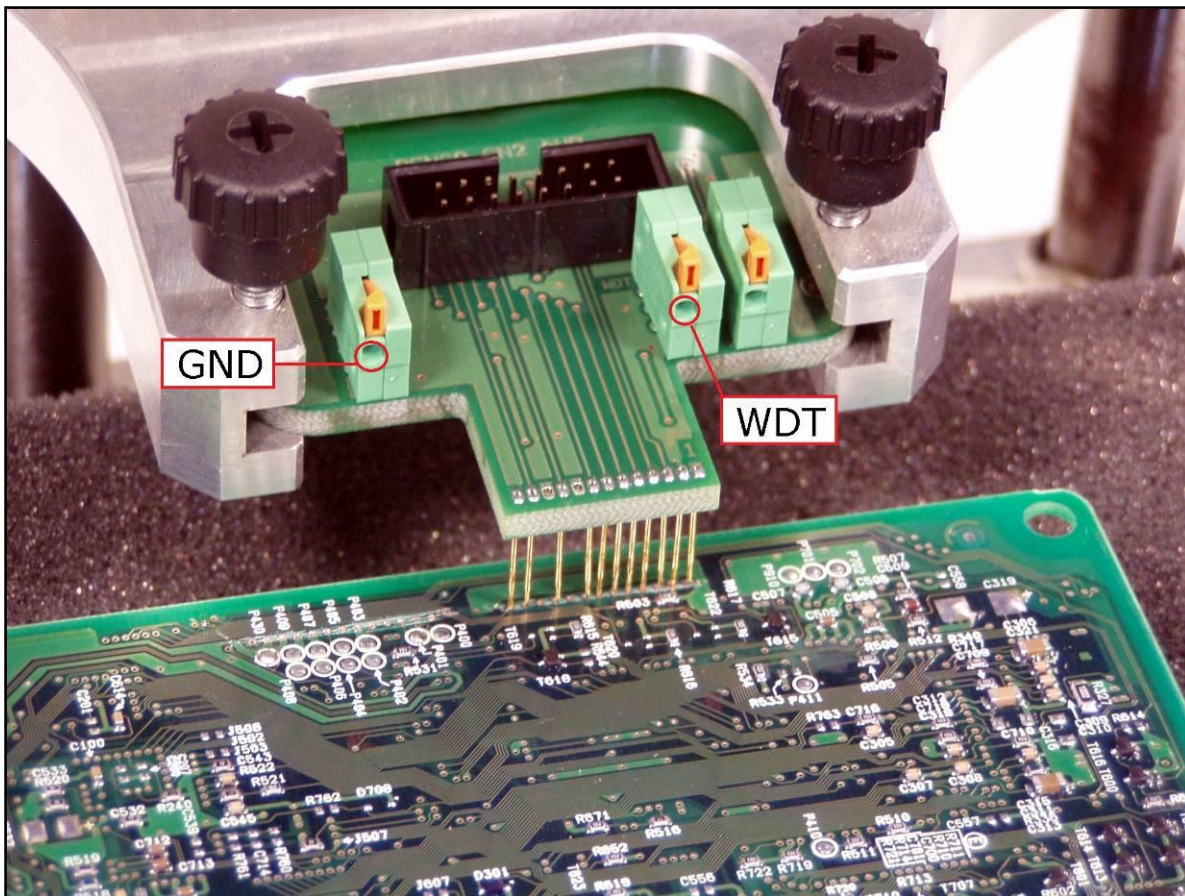
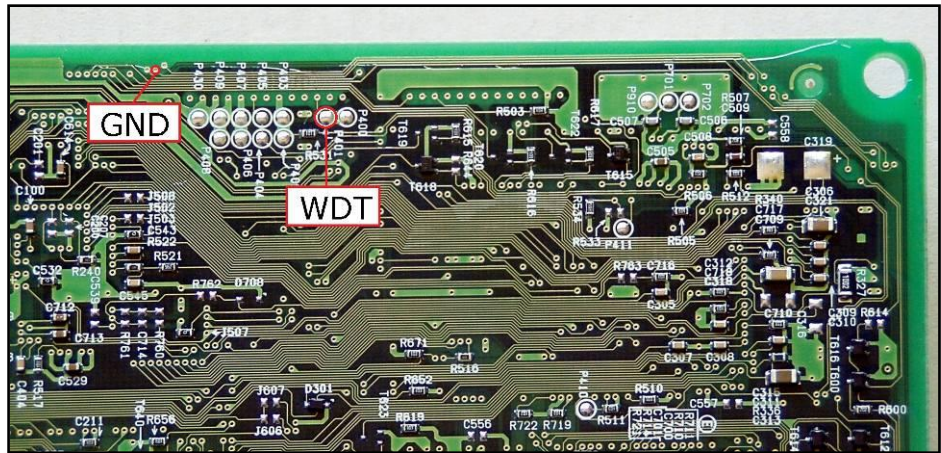
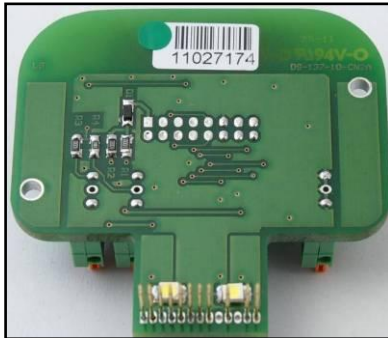
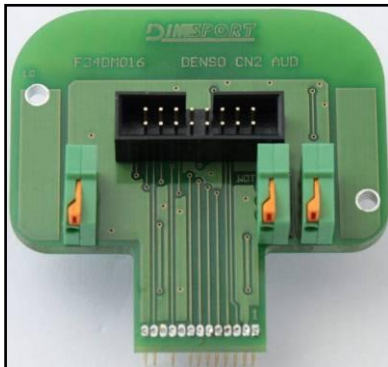
For a correct soldering procedure clean very well the soldering lay-by pins from the plastic film. We suggest you to use a fine grit glass-paper smoothing by gentle pressure the connection of the lay by pins.



METAL POSITIONING FRAME CONNECTION – ECU READING

Power the ECU with the F32GN037C/D wiring. Use the adapter F34DM016.

Connect the two pads GND and WDT to the adapter F34DM016 as shown in the picture.



DENSO SH7055 076JB SUZUKI

METAL POSITIONING FRAME CONNECTION – ECU WRITING

Power the ECU with the F32GN037C/D wiring. Use the adapter F34DM017.

