

DENSO SH7055 112200 8481 SUBARU

PLUGIN 564

9 Z



22611AJ590

1 1 2 2 0 0 - 8 4 8 1  
1 2 V

**DENSO**

MADE IN JAPAN

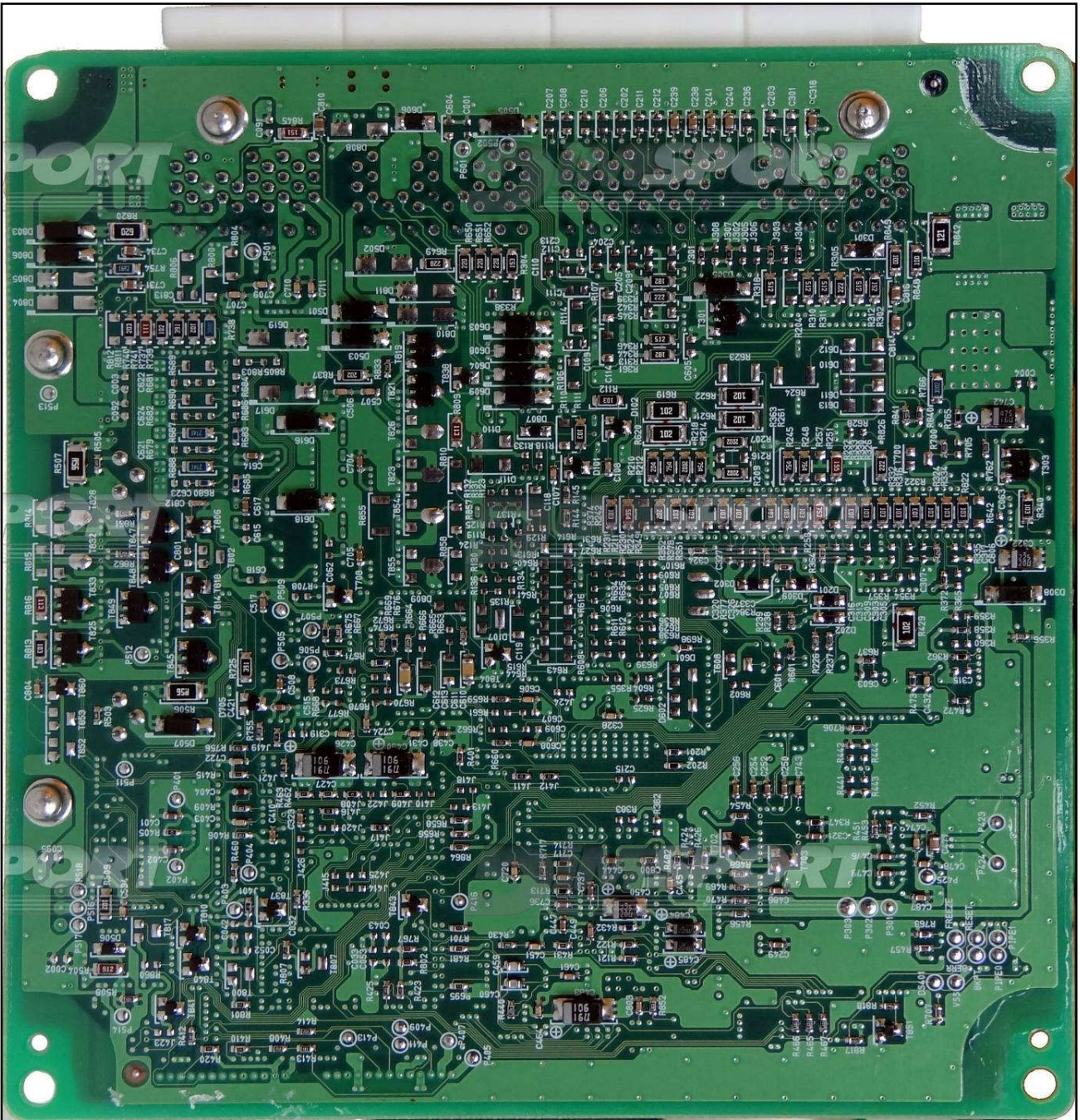


\* 2 2 8 4 8 1 P \*

DENSO SH7055 112200 8481 SUBARU



DENSO SH7055 112200 8481 SUBARU

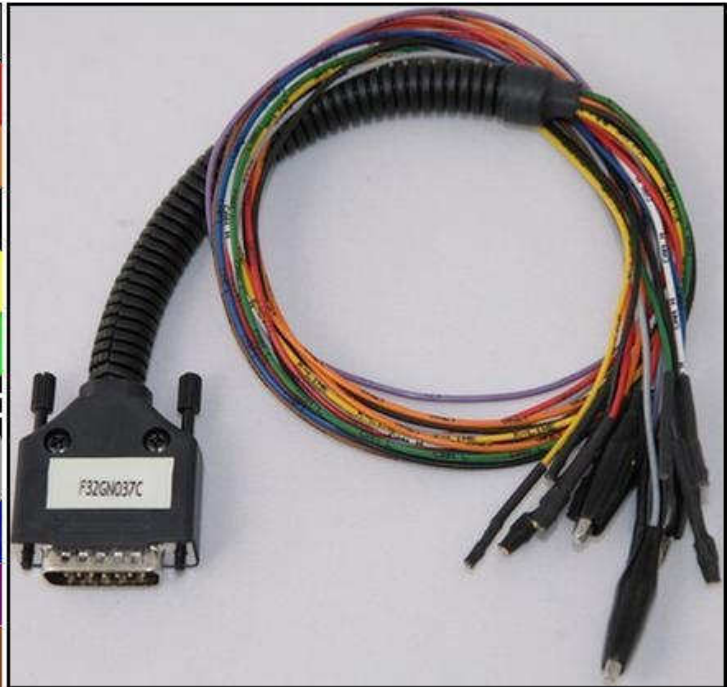


DENSO SH7055 112200 8481 SUBARU

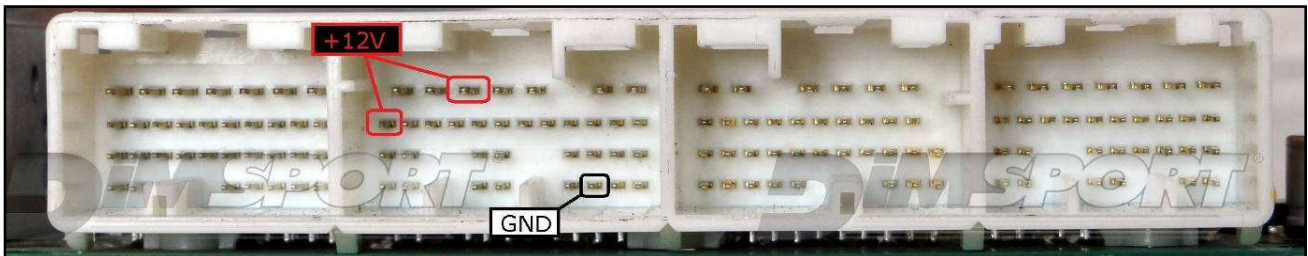
### DIRECT CONNECTION

In order to connect to the ECU use the CABLE F32GN037C.  
Make sure that the POWER led (red) on Trasdata is ON.

COLORE FILO WIRE COLOUR		DESCRIZIONE DESCRIPTION
ROSSO RED		POSITIVO DIRETTO POWER BATTERY
ARANCIO ORANGE		POSITIVO SOTTO QUADRO POWER SWITCH ON
NERO BLACK		MASSA GND
GIALLO YELLOW		KLINE
VERDE GREEN		CAN LOW
BIANCO WHITE		CAN HIGH
GRIGIO GREY		POL4 BOOT
BLU BLUE		POL5 CNF1
VIOLA/GRIGIO PURPLE/GREY		TENSIONE PROG. PROG. VOLTAGE
MARRONE BROWN		RESET



### ECU CONNECTOR



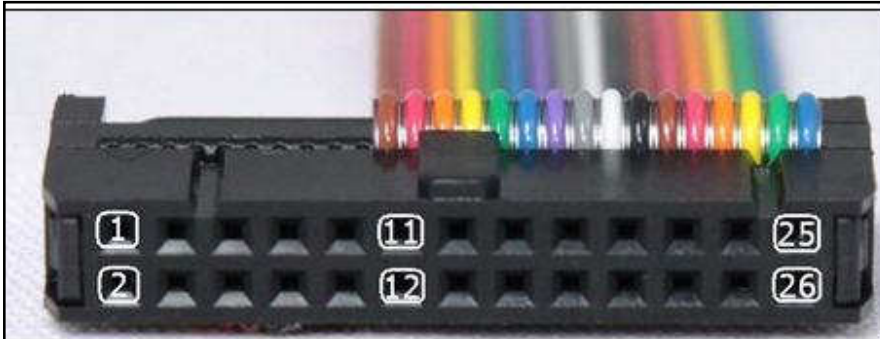
### WARNING :

on this ECU you must use two different flat cables: one is for the READING procedure and one is for the WRITING procedure

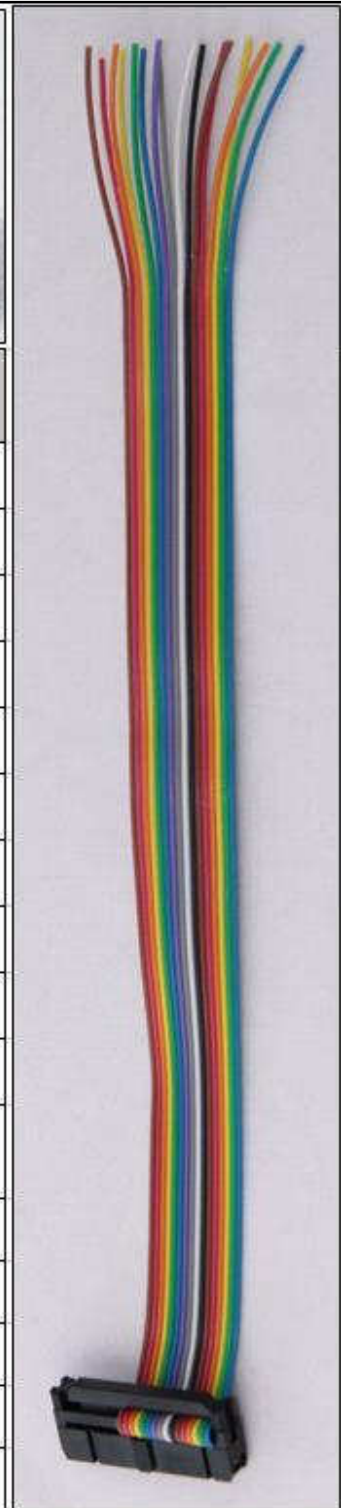
DENSO SH7055 112200 8481 SUBARU

**DIRECT CONNECTION – ECU READING:**

For the READING procedure use the FLAT cable F34NTF53

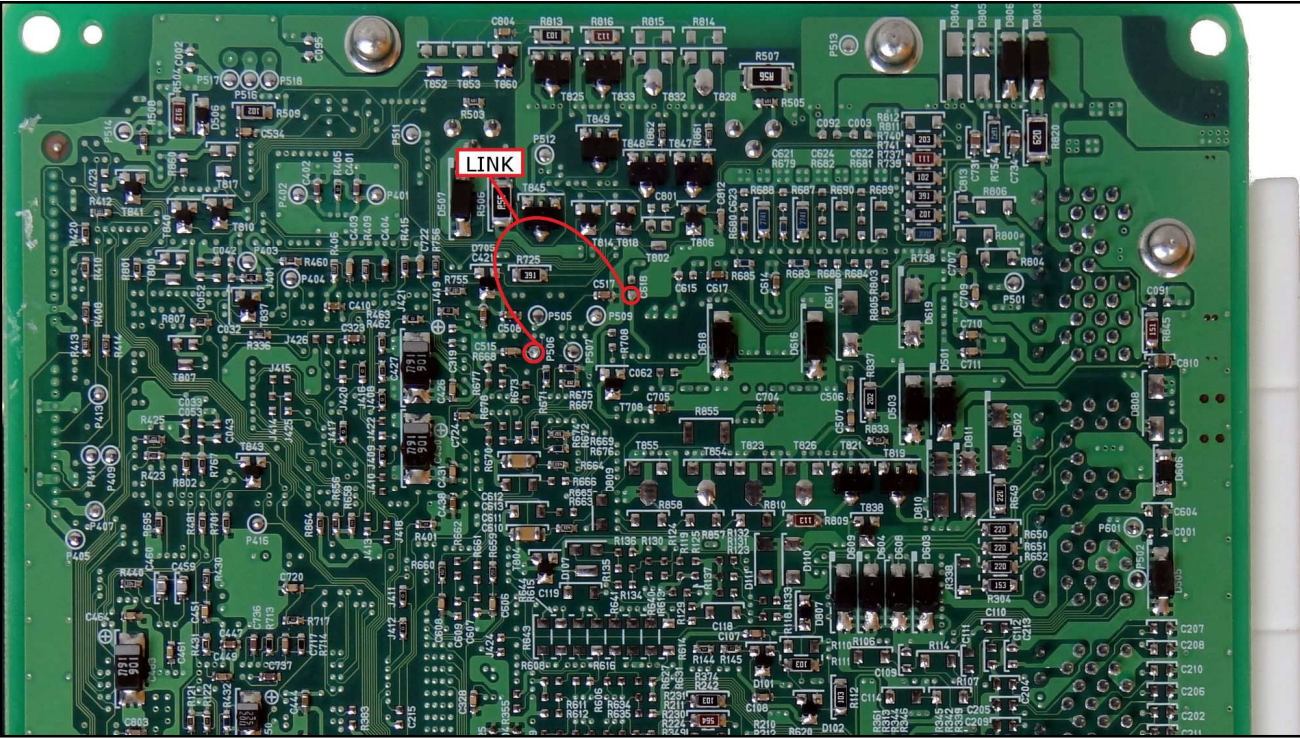
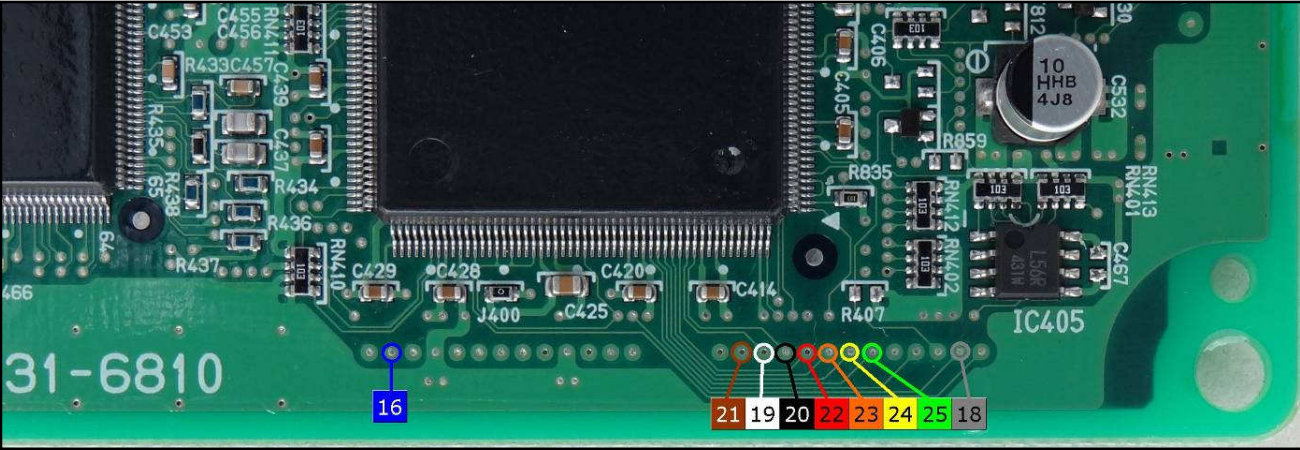


Pin	Colore Colour
11	Non usato Not used
12	Non usato Not used
13	Non usato Not used
14	Non usato Not used
15	Non usato Not used
16	Blu Blue
17	Viola Violet
18	Grigio Grey
19	Bianco White
20	Nero Black
21	Marrone Brown
22	Rosso Red
23	Arancio Orange
24	Giallo Yellow
25	Verde Green
26	Non usato Not used



# DENSO SH7055 112200 8481 SUBARU

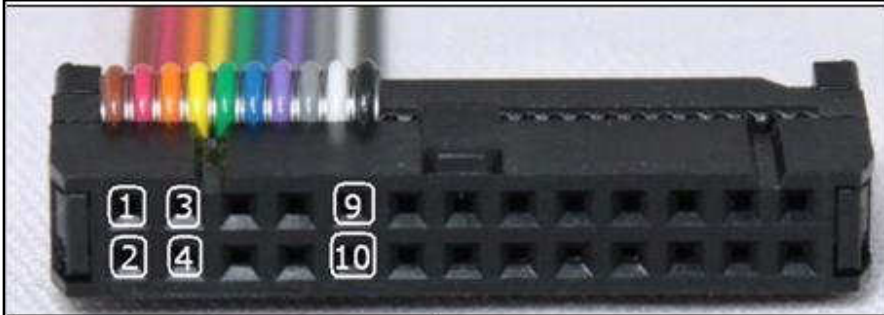
For a correct soldering procedure clean very well the soldering lay by pins from the plastic film. We suggest you to use a fine grit glass paper smoothing by gentle pressure the connection of the lay by pins. For the reading procedure it is necessary to perform all the LINK shown in the picture here below. At the end of the reading procedure remove all the LINK.



DENSO SH7055 112200 8481 SUBARU

**DIRECT CONNECTION – ECU WRITING:**

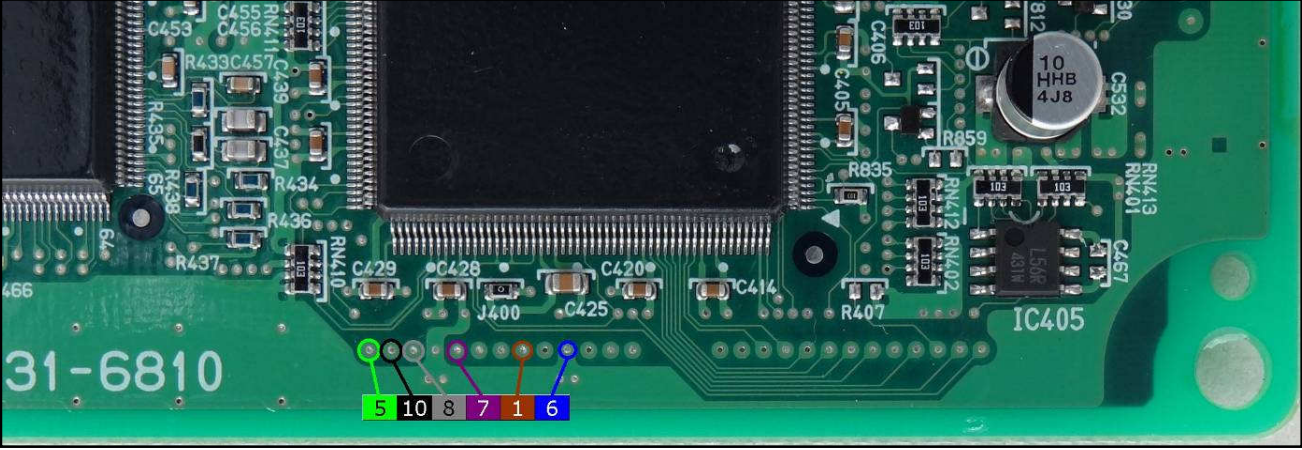
For the WRITING procedure use the FLAT cable F34NTF51



Pin	Colore Colour
1	Marrone Brown
2	Non usato Not used
3	Non usato Not used
4	Giallo Yellow
5	Verde Green
6	Blu Blue
7	Viola Violet
8	Grigio Grey
9	Bianco White
10	Nero Black

DENSO SH7055 112200 8481 SUBARU

For a correct soldering procedure clean very well the soldering lay by pins from the plastic film. We suggest you to use a fine grit glass paper smoothing by gentle pressure the connection of the lay by pins.

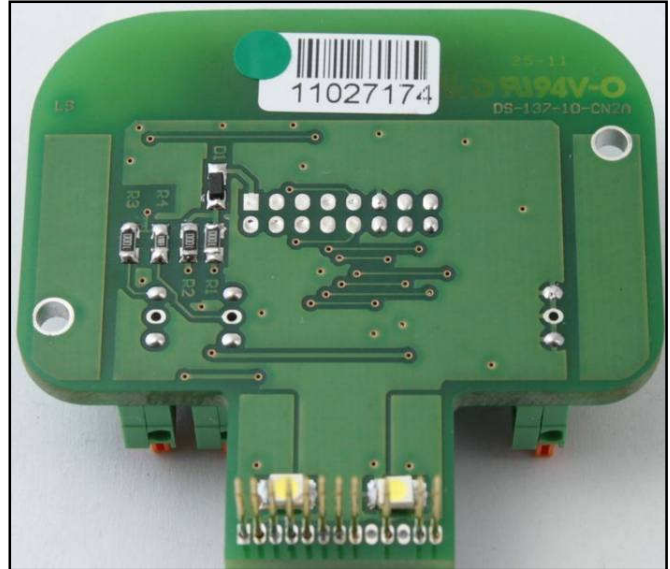




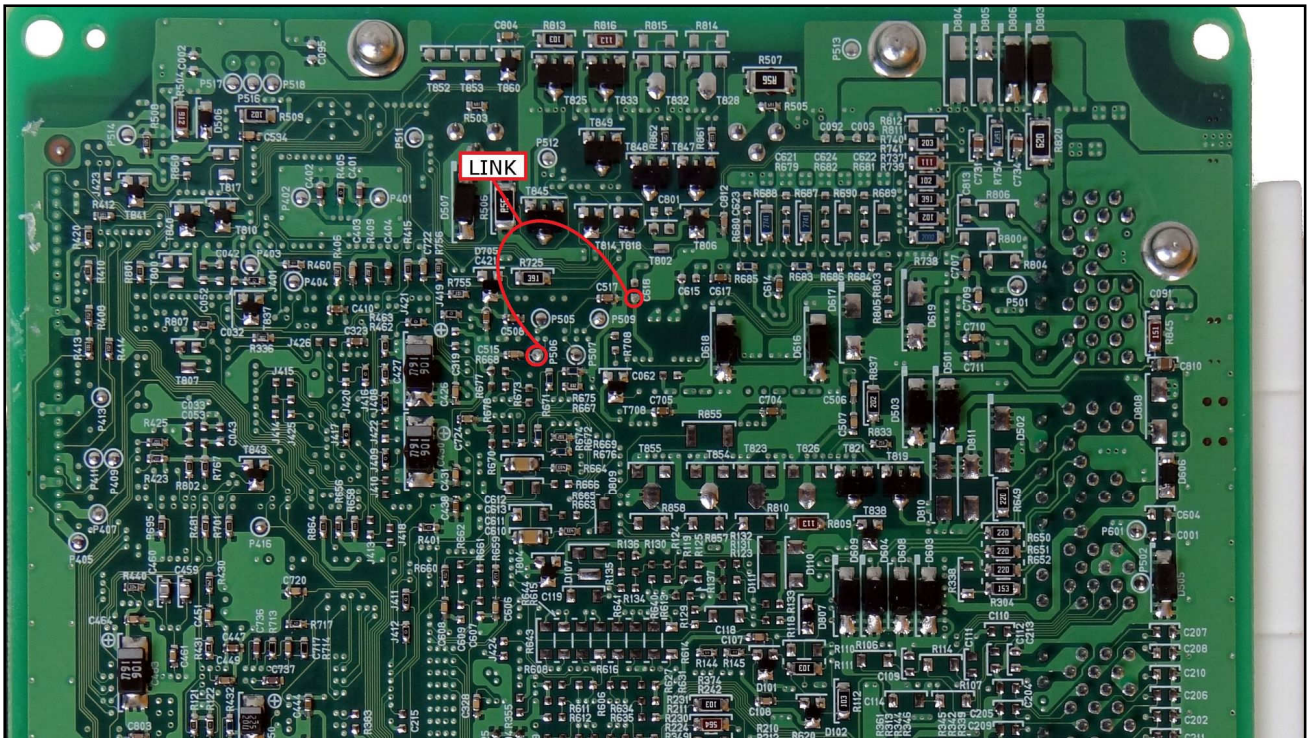
DENSO SH7055 112200 8481 SUBARU

### ECU READING – DIMA CONNECTION

Power the ECU with the wiring F32GN037C. Use the DIMA adapter DIMA F34DM016.

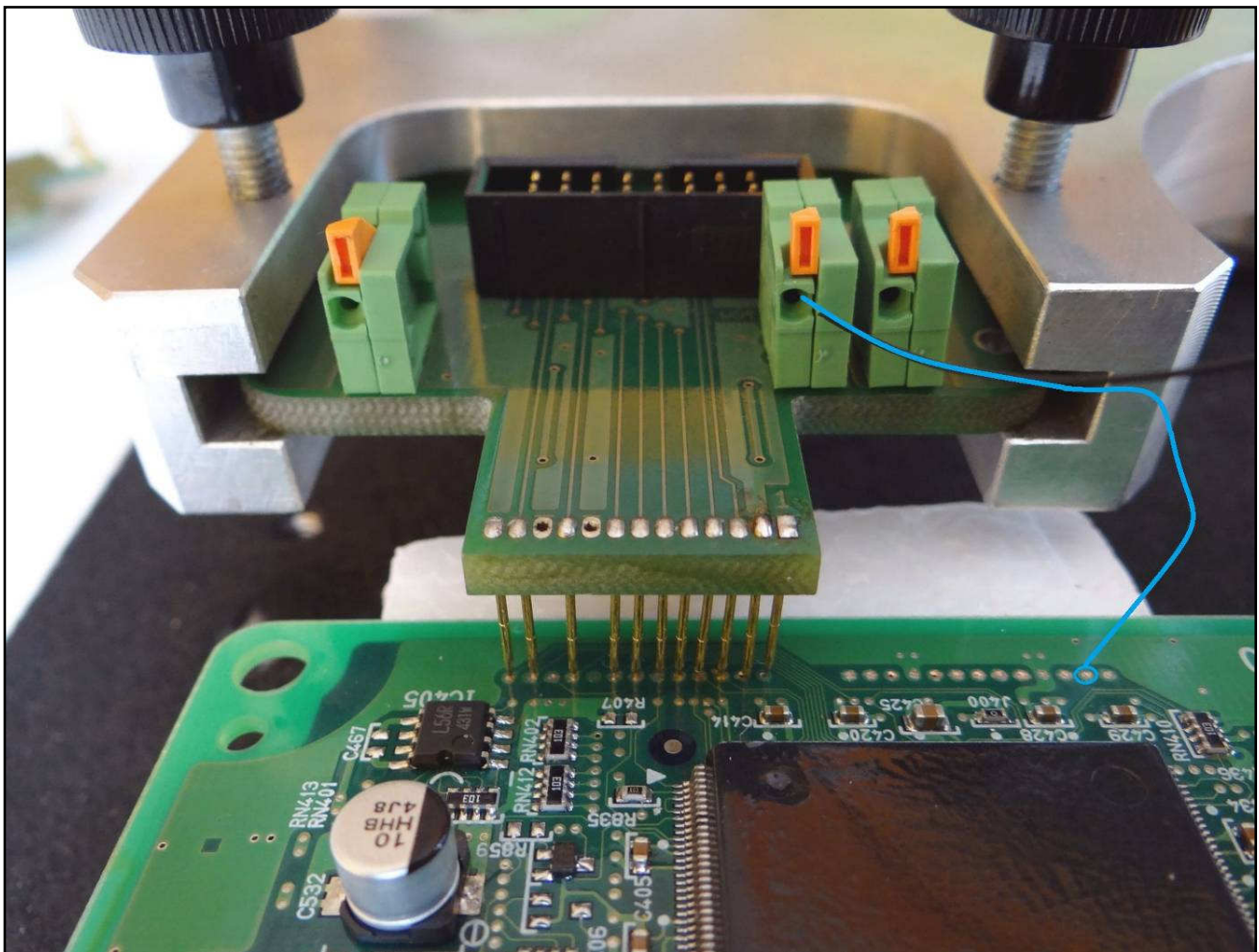
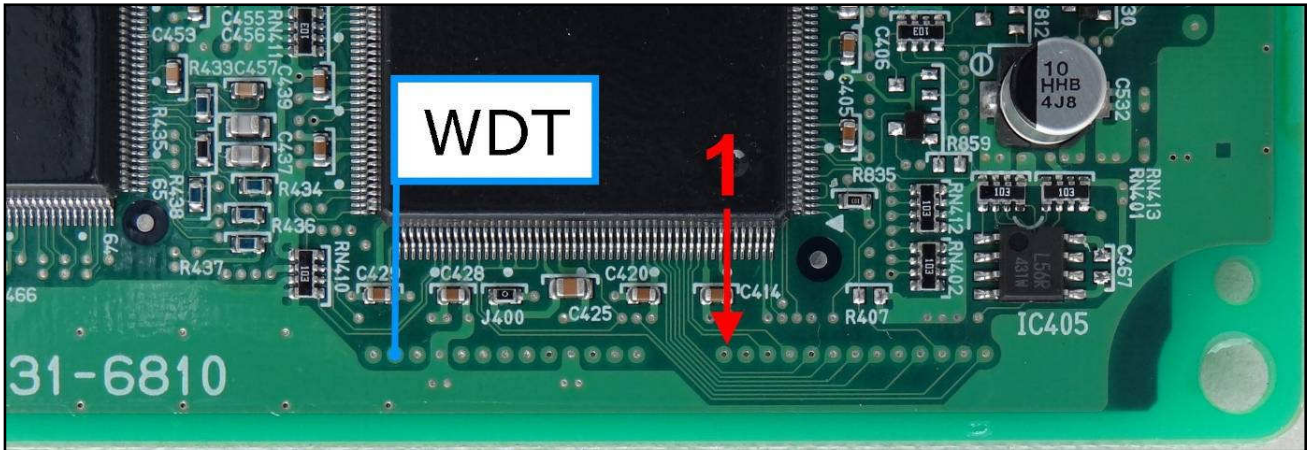


**WARNING:** for a correct reading procedure it is required a little bridge (LINK) as shown in the picture here below LINK1.  
LINK1 is required for the reading procedure ONLY, remove it at the end of the procedure.



DENSO SH7055 112200 8481 SUBARU

Connect the pad WDT shown in the picture to the WDT connector on the DIMA adapter.



DENSO SH7055 112200 8481 SUBARU

### ECU WRITING – DIMA CONNECTION

Power the ECU with the wiring F32GN037C. Use the DIMA adapter DIMA F34DM019.

