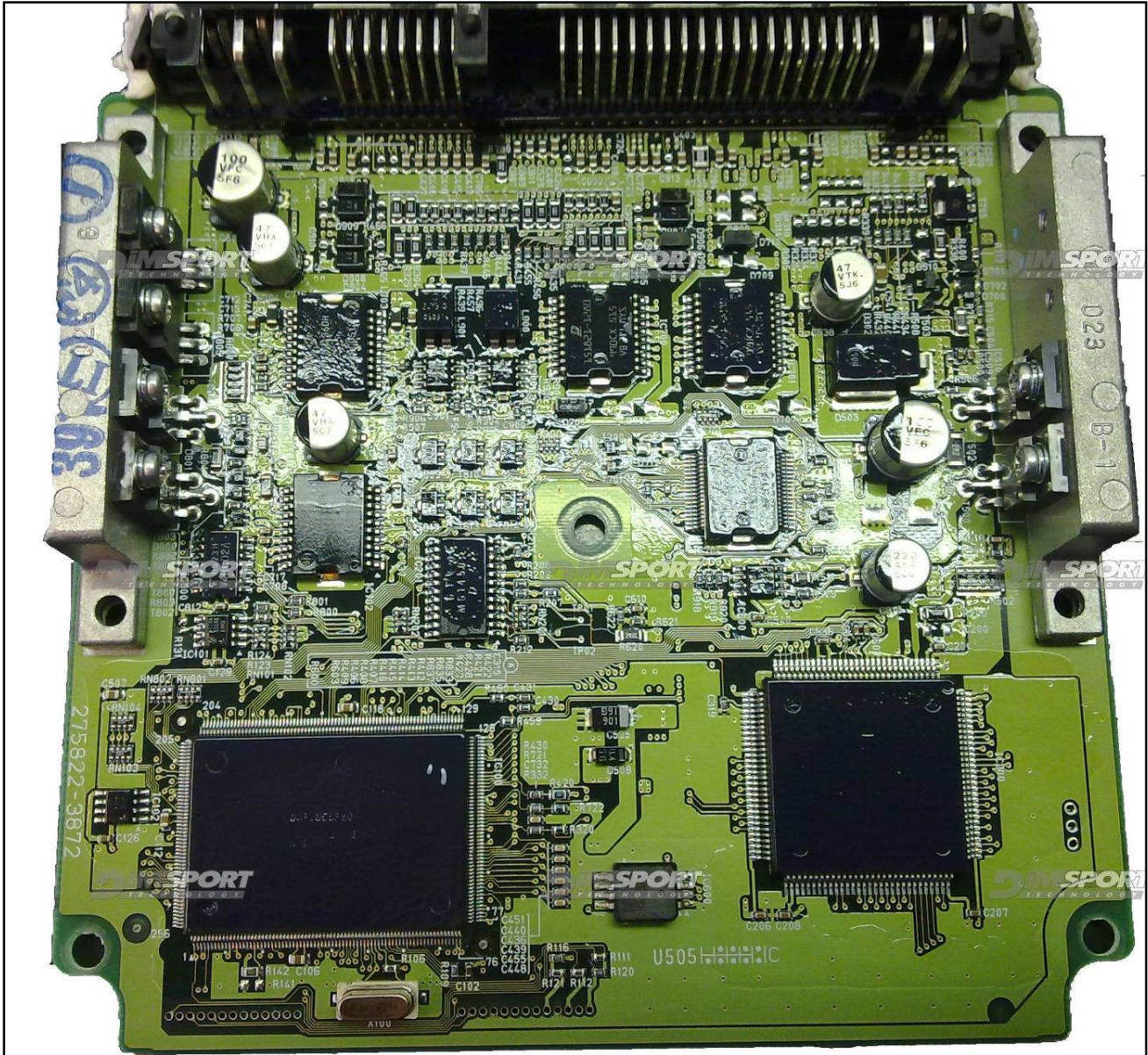


DENSO SH7058 6DE1 GM

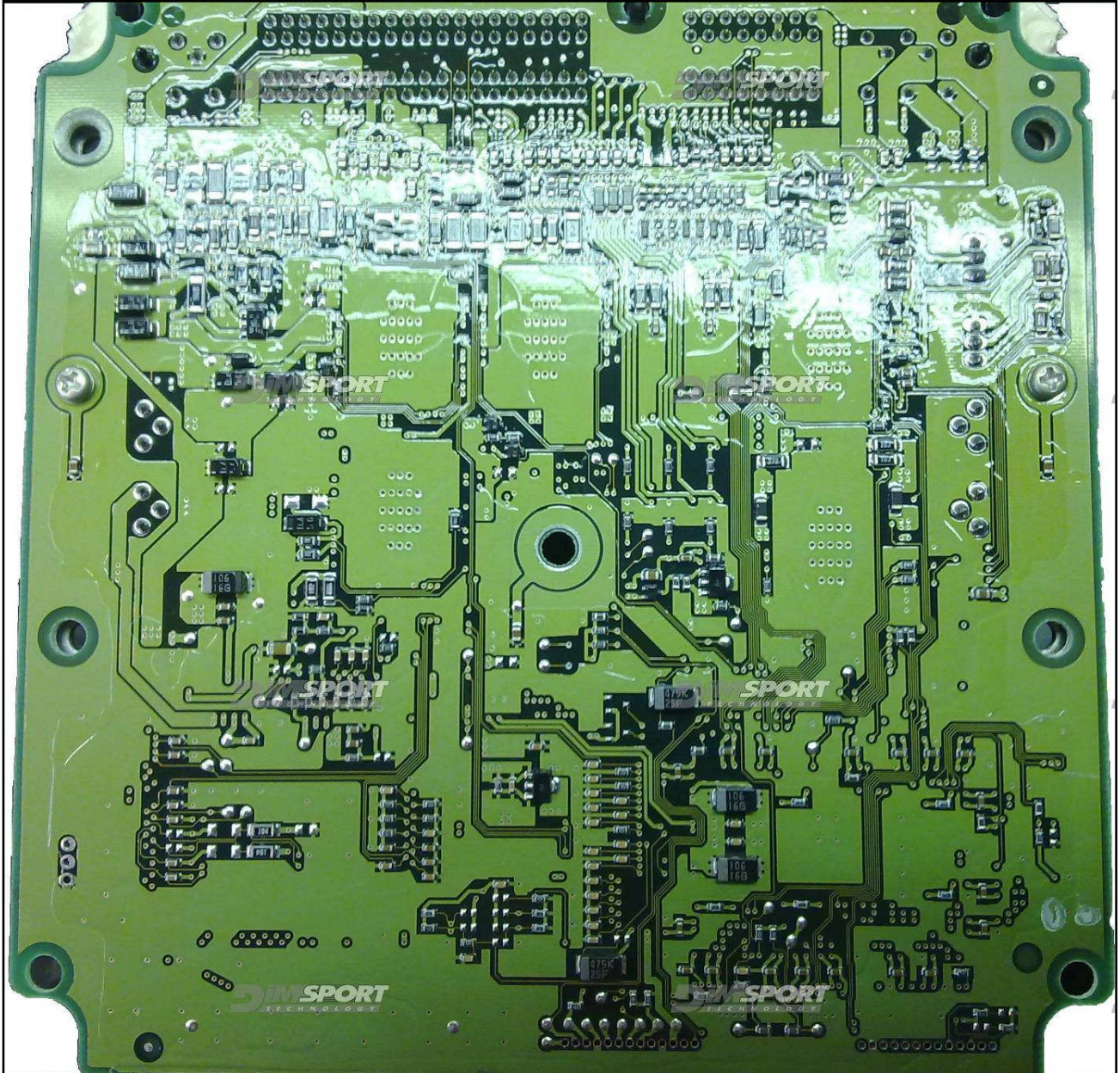
PLUGIN 322

ECU upper side



DENSO SH7058 6DE1 GM

ECU lower side

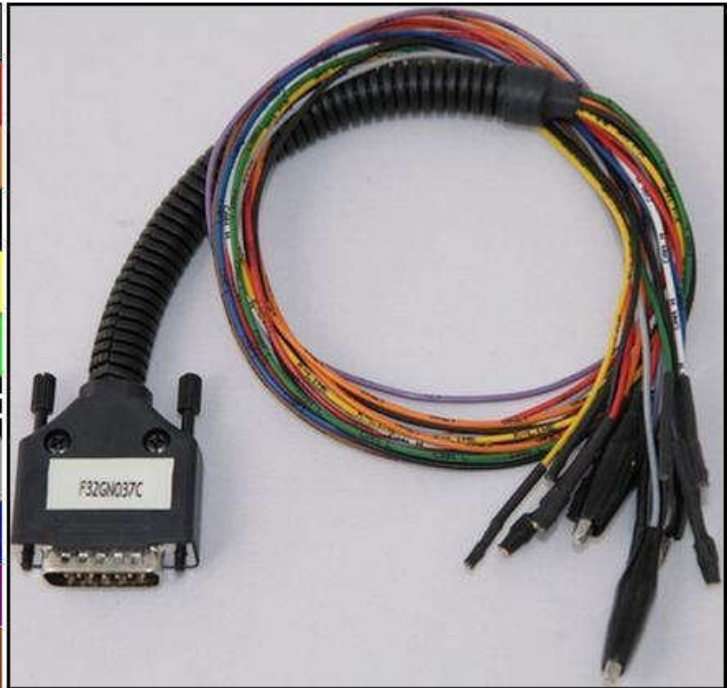


DENSO SH7058 6DE1 GM

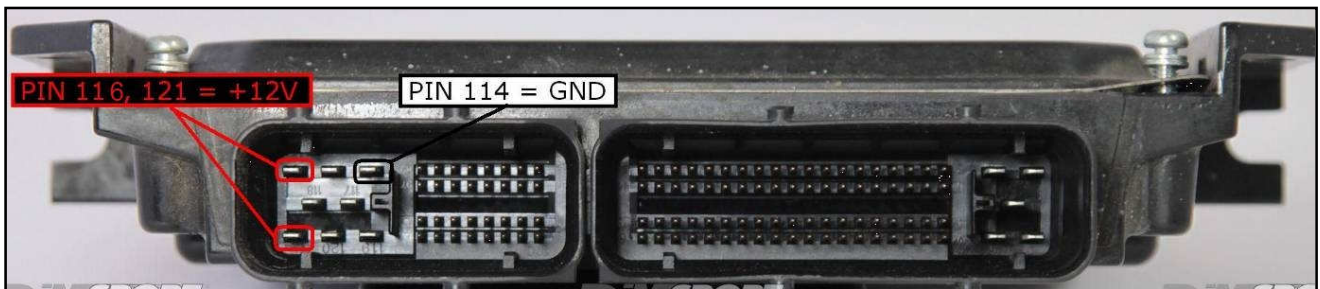
DIRECT CONNECTION

In order to connect to the ECU use the CABLE F32GN037C.
Make sure that the POWER led (red) on Trasdata is ON.

COLORE FILO WIRE COLOUR	DESCRIZIONE DESCRIPTION
ROSSO RED	POSITIVO DIRETTO POWER BATTERY
ARANCIO ORANGE	POSITIVO SOTTO QUADRO POWER SWITCH ON
NERO BLACK	MASSA GND
GIALLO YELLOW	KLINE
VERDE GREEN	CAN LOW
BIANCO WHITE	CAN HIGH
GRIGIO GREY	POL4 BOOT
BLU BLUE	POL5 CNF1
VIOLA/GRIGIO PURPLE/GREY	TENSIONE PROG. PROG. VOLTAGE
MARRONE BROWN	RESET



ECU CONNECTOR



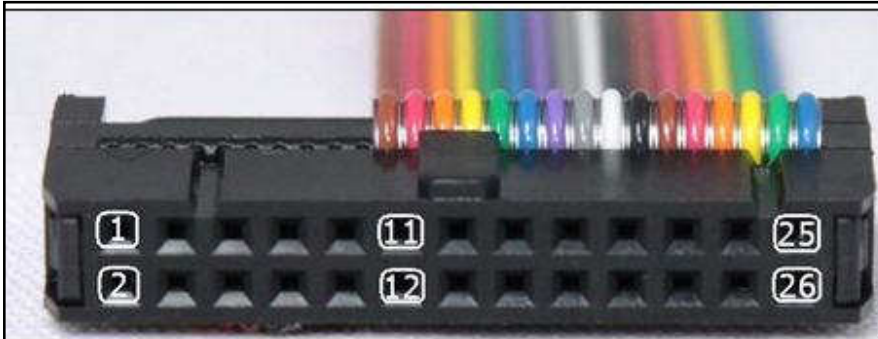
WARNING:

on this ECU you must use two different flat cables: one is for the READING procedure and one is for the WRITING procedure.

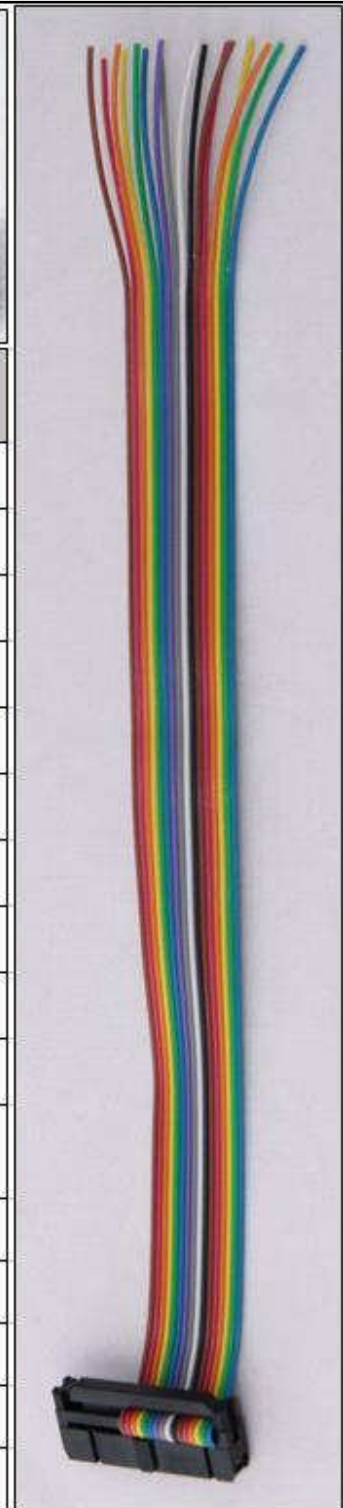
DENSO SH7058 6DE1 GM

DIRECT CONNECTION – ECU READING:

For the READING procedure use the FLAT cable F34NTF53



Pin	Colore Colour
11	Non usato Not used
12	Non usato Not used
13	Non usato Not used
14	Non usato Not used
15	Non usato Not used
16	Blu Blue
17	Viola Violet
18	Grigio Grey
19	Bianco White
20	Nero Black
21	Marrone Brown
22	Rosso Red
23	Arancio Orange
24	Giallo Yellow
25	Verde Green
26	Non usato Not used

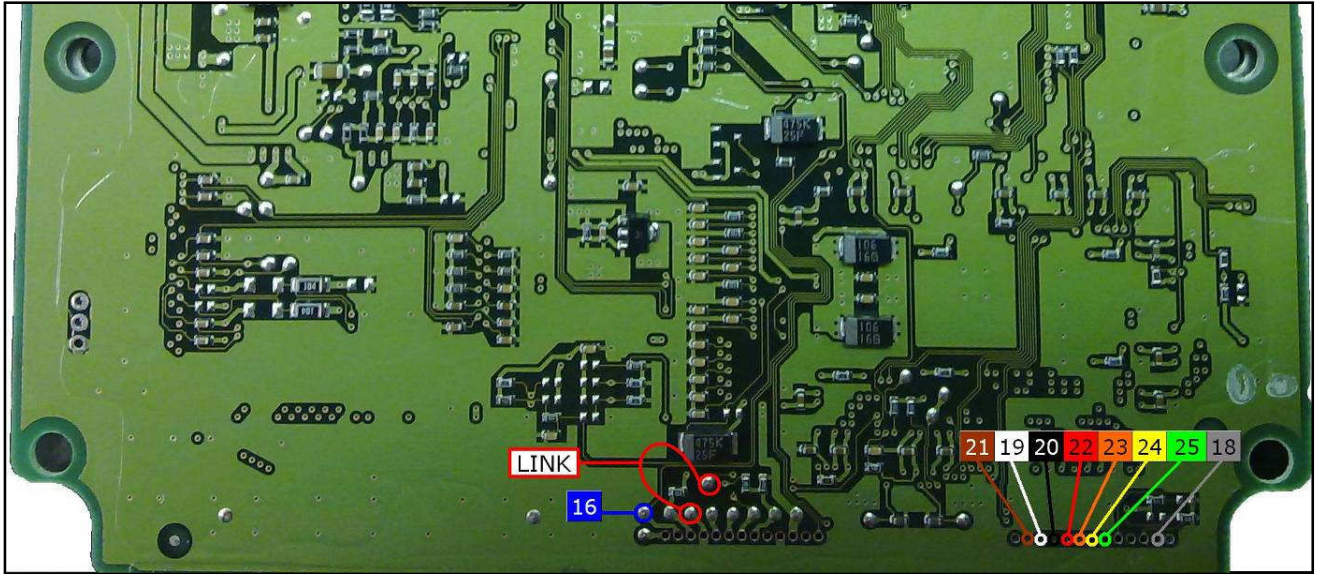


DENSO SH7058 6DE1 GM

For a correct soldering procedure clean very well the soldering lay by pins from the plastic film. We suggest you to use fine grit glass paper smoothing by gentle pressure the connection lay by pins

For the reading procedure it is required a little short circuit (LINK) as shown in the picture here below. Such bridge is used for the READING ONLY, remove it after the reading procedure.

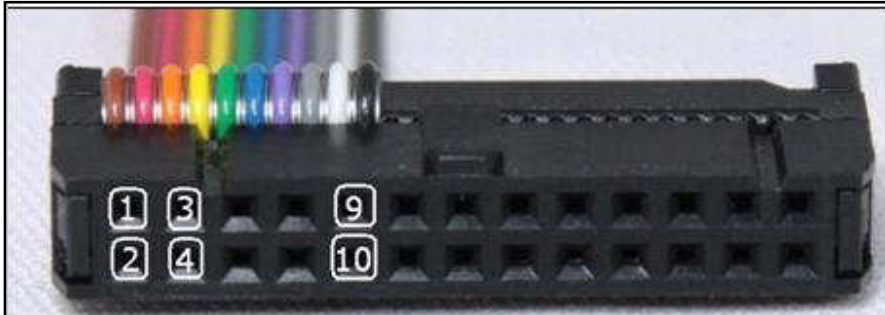
Lower side



DENSO SH7058 6DE1 GM

DIRECT CONNECTION – ECU WRITING:

For the WRITING procedure use the FLAT cable F34NTF51



Pin	Colore Colour
1	Marrone Brown
2	Non usato Not used
3	Non usato Not used
4	Giallo Yellow
5	Verde Green
6	Blu Blue
7	Viola Violet
8	Grigio Grey
9	Bianco White
10	Nero Black



DENSO SH7058 6DE1 GM

For a correct soldering procedure clean very well the soldering lay by pins from the plastic film. We suggest you to use fine grit glass paper smoothing by gentle pressure the connection lay by pins. The lay by pins are placed on the lower side of the ECU.

