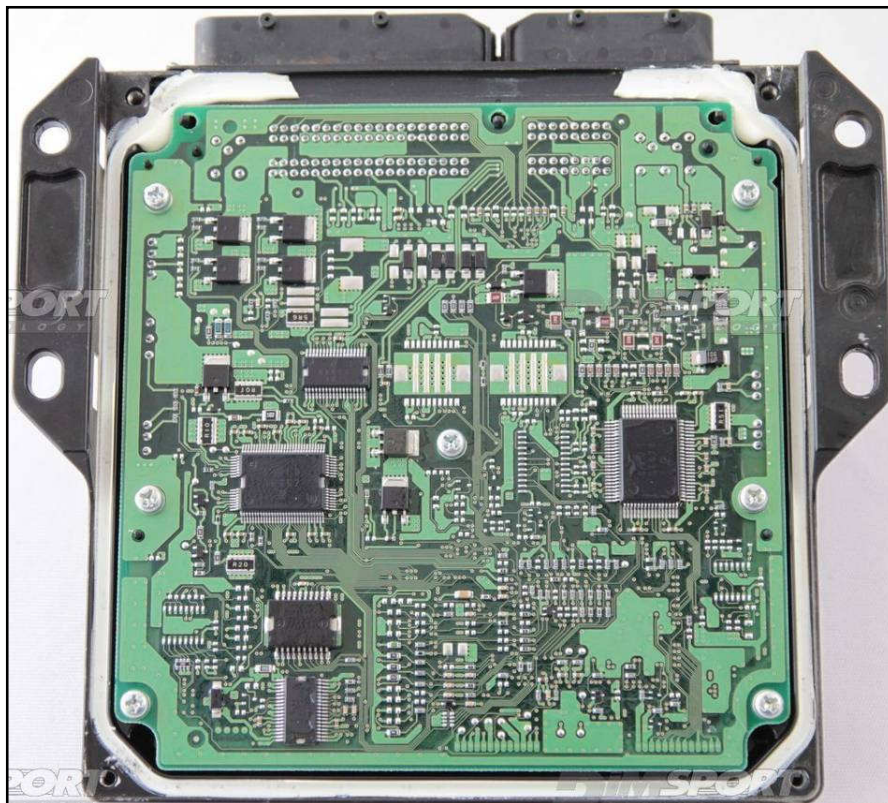


DENSO SH7058 SUBARU

PLUGIN 275

The lay by pins are placed in the lower part of the ECU.

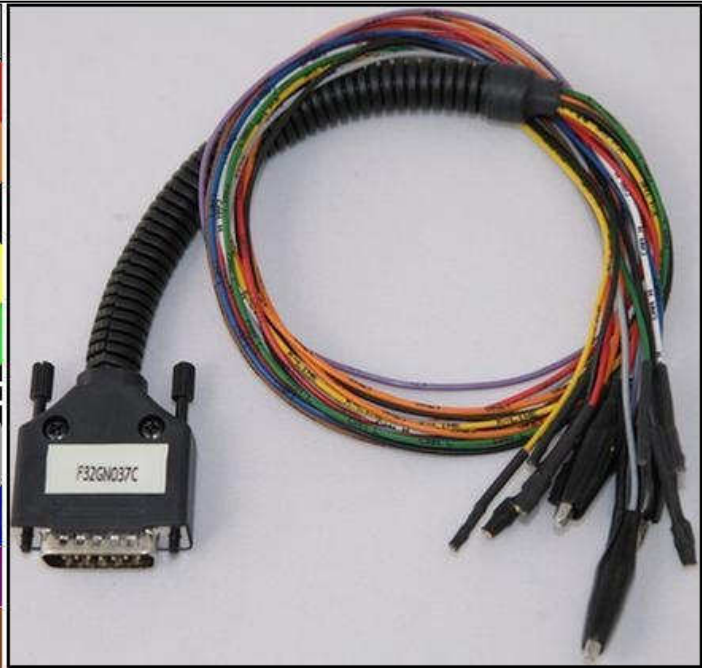


DENSO SH7058 SUBARU

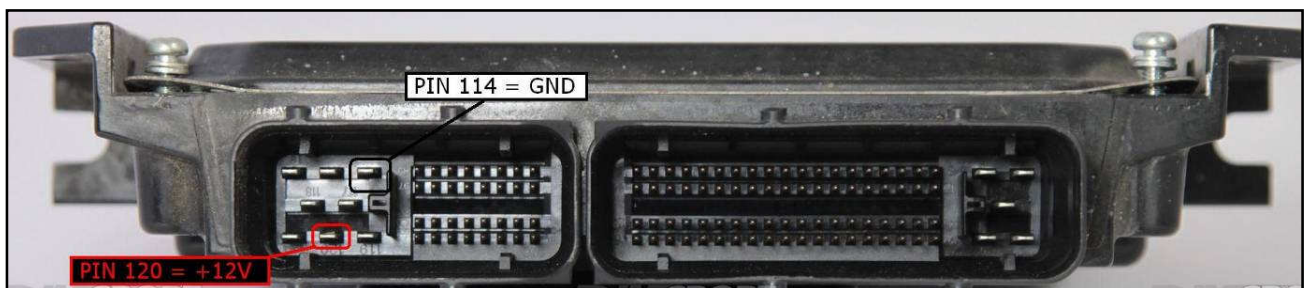
DIRECT CONNECTION

In order to connect to the ECU use the CABLE F32GN037C. Make sure that the POWER led (red) on Trasdata is ON. Use the same power connection for the DIMA too.

| COLORE FILO WIRE COLOUR | DESCRIZIONE DESCRIPTION |
|-----------------------------|--|
| ROSSO RED | POSITIVO DIRETTO POWER BATTERY |
| ARANCIO ORANGE | POSITIVO SOTTO QUADRO POWER SWITCH ON |
| NERO BLACK | MASSA GND |
| GIALLO YELLOW | KLINE |
| VERDE GREEN | CAN LOW |
| BIANCO WHITE | CAN HIGH |
| GRIGIO GREY | POL4 BOOT |
| BLU BLUE | POL5 CNF1 |
| VIOLA/GRIGIO PURPLE/GREY | TENSIONE PROG. PROG. VOLTAGE |
| MARRONE BROWN | RESET |



ECU CONNECTOR



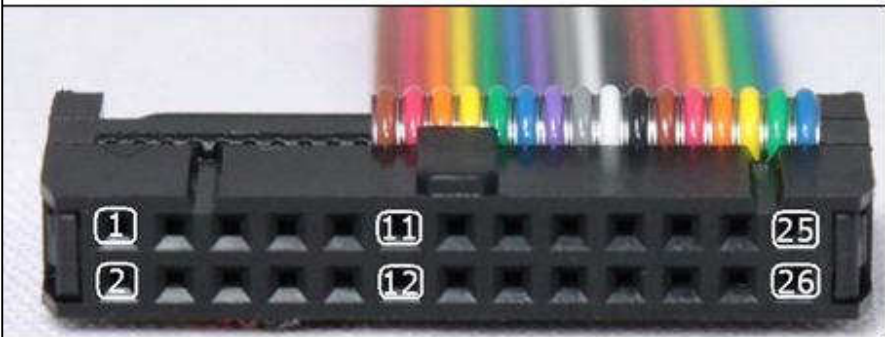

WARNING :

on this ECU you must use two different flat cables: one is for the READING procedure and one is for the WRITING procedure.

DENSO SH7058 SUBARU

DIRECT CONNECTION – ECU READING:

For the READING procedure use the FLAT cable F34NTF53

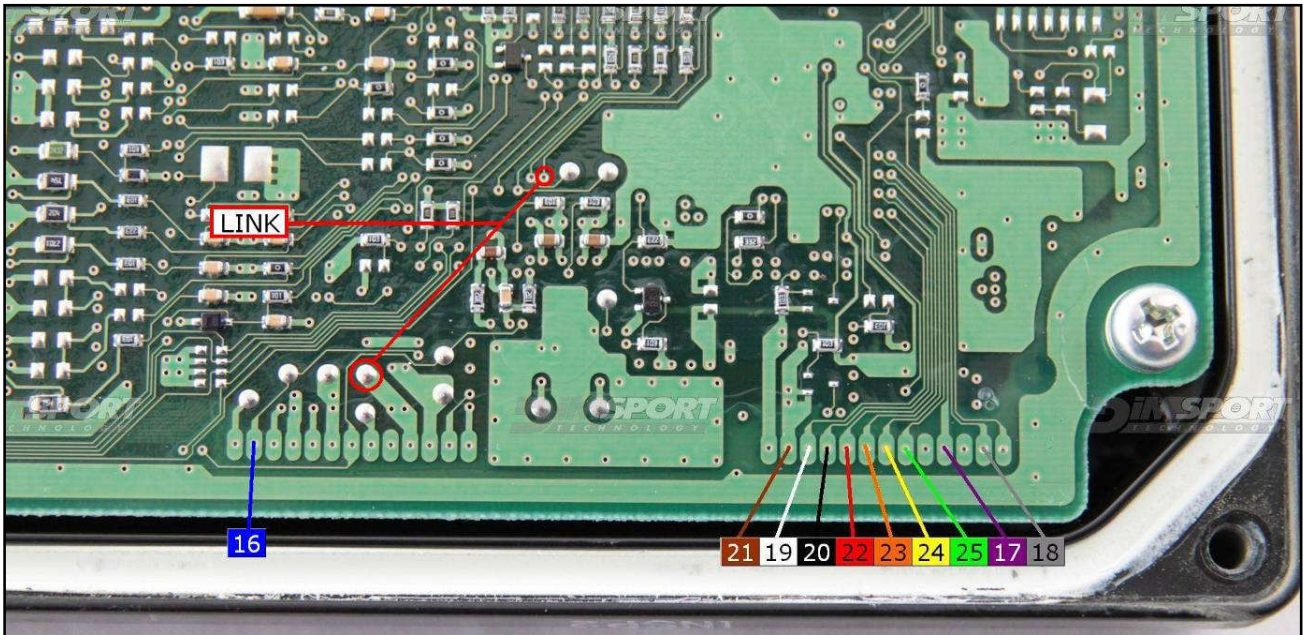



| Pin | Colore Colour |
|-----|-----------------------|
| 11 | Non usato Not used |
| 12 | Non usato Not used |
| 13 | Non usato Not used |
| 14 | Non usato Not used |
| 15 | Non usato Not used |
| 16 | Blu Blue |
| 17 | Viola Violet |
| 18 | Grigio Grey |
| 19 | Bianco White |
| 20 | Nero Black |
| 21 | Marrone Brown |
| 22 | Rosso Red |
| 23 | Arancio Orange |
| 24 | Giallo Yellow |
| 25 | Verde Green |
| 26 | Non usato Not used |

DENSO SH7058 SUBARU

For a correct soldering procedure clean very well the soldering lay-by pins from the plastic film. We suggest you to use fine grit glass-paper smoothing by gentle pressure the connection lay by pins.

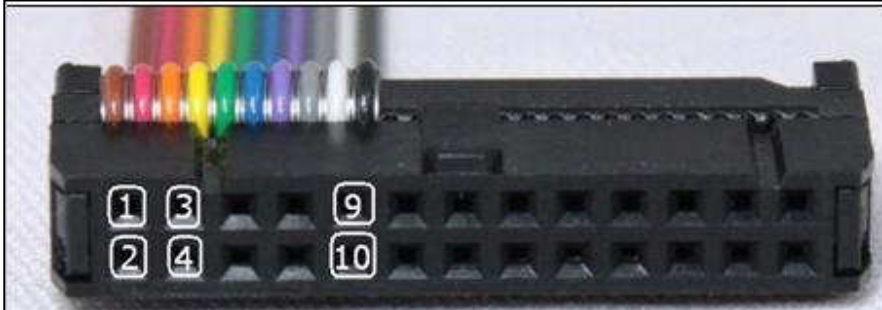
WARNING: for a correct reading procedure it is required a little short circuit (bridge) as shown in the picture here below. Such bridge is used for the READING ONLY, remove it after the reading procedure.



DENSO SH7058 SUBARU

DIRECT CONNECTION – ECU WRITING:

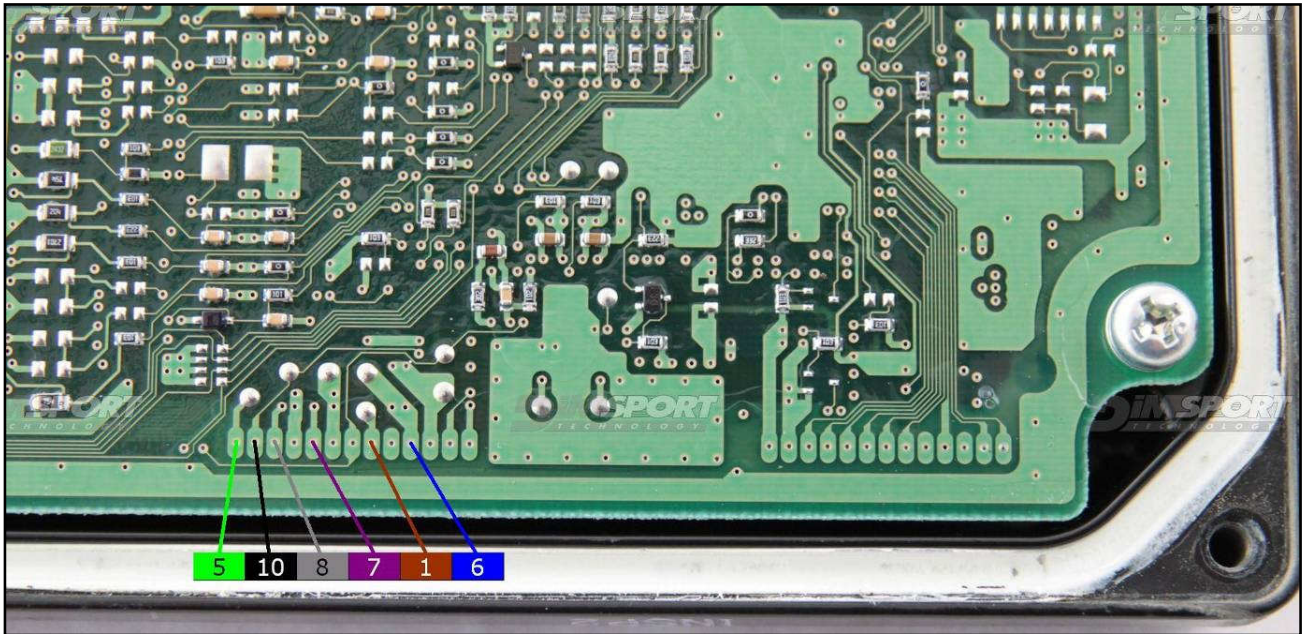
For the WRITING procedure use the FLAT cable F34NTF51



| Pin | Colore Colour |
|-----|-----------------------|
| 1 | Marrone Brown |
| 2 | Non usato Not used |
| 3 | Non usato Not used |
| 4 | Giallo Yellow |
| 5 | Verde Green |
| 6 | Blu Blue |
| 7 | Viola Violet |
| 8 | Grigio Grey |
| 9 | Bianco White |
| 10 | Nero Black |

DENSO SH7058 SUBARU

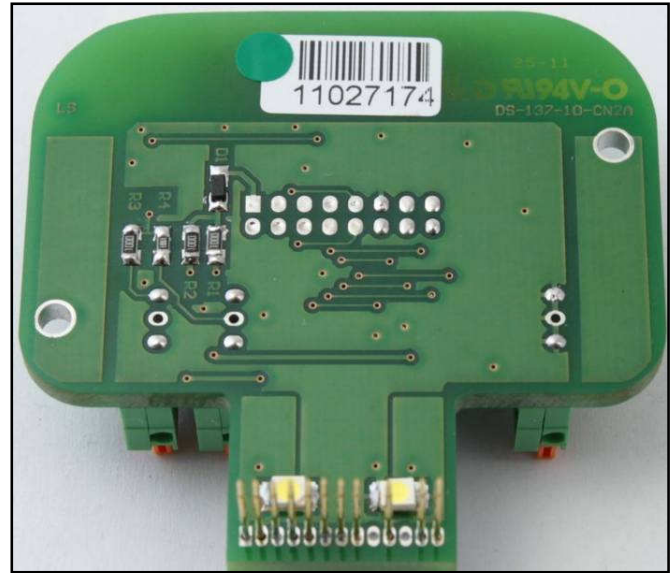
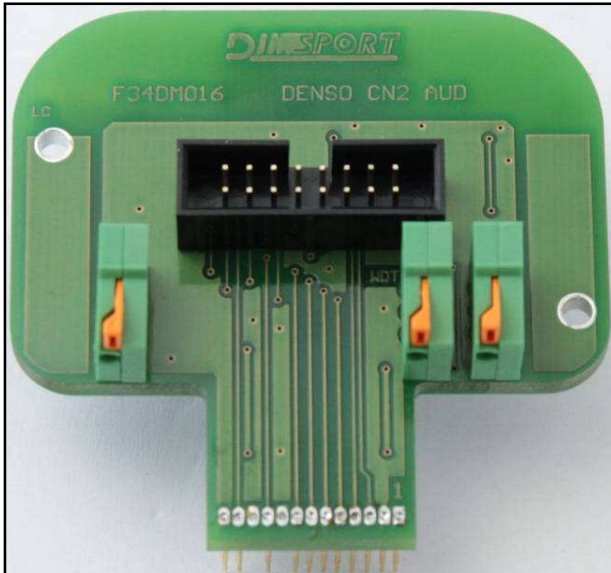
For a correct soldering procedure clean very well the soldering lay-by pins from the plastic film. We suggest you to use fine grit glass-paper smoothing by gentle pressure the connection lay by pins.



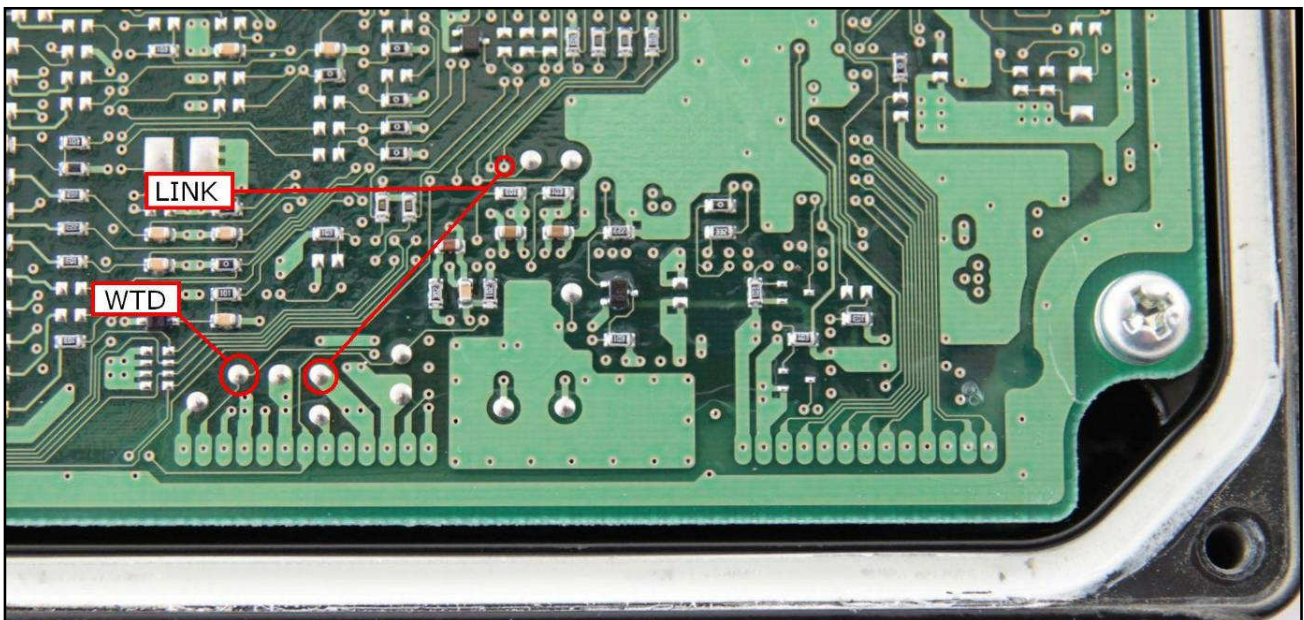
DENSO SH7058 SUBARU

DIMA CONNECTION – ECU READING

Power the ECU with the F32GN037C wiring. Use the DIMA adapter F34DM016.



WARNING: in order to perform the reading it is necessary to short-circuit the two LINK pads (make a bridge) and connect the pin shown in the picture to the WTD connector on the DIMA adapter. This connection is required for reading only, remove it at the end of the reading process.



DENSO SH7058 SUBARU



DENSO SH7058 SUBARU

DIMA CONNECTION – ECU WRITING

Power the ECU with the F32GN037C wiring. Use the DIMA adapter DIMA F34DM019.

